

PACIFIC CREST

Recorded in Book 74 Page 22 of Plats

200 Scale Map Location: K-24-8

Fire Dept. District Map # 2214:88, 98

MASTER SITE ADDRESS: 10250 N. COVINGTON CROSS DR

BLDG	1	UNIT	111	10221	PENRITH AVE	103	E/W	PRIVATE STREET
			112			104		
			121			203		
			122			204		
			123			201		
			124			202		
BLDG	2	UNIT	211	10225	PENRITH AVE	101	E/W	PRIVATE STREET
			212			102		
			213			103		
			214			104		
BLDG	3	UNIT	311	10224	PENRITH AVE	103	E/W	PRIVATE STREET
			312			102		
			313			101		
			314			104		
			321			203		
			322			202		
			323			201		
			324			204		
BLDG	4	UNIT	411	10220	PENRITH AVE	103	E/W	PRIVATE STREET
			412			104		
			421			203		
			422			204		
			423			201		
			424			202		
BLDG	5	UNIT	511	1600	QUEEN VICTORIA ST	101	N/S	PRIVATE STREET
			512			102		
			513			103		
			514			104		
			521			201		
			522			202		
			523			203		
			524			204		
BLDG	6	UNIT	611	1604	QUEEN VICTORIA ST	104	N/S	PRIVATE STREET
			612			103		
			613			102		
			614			101		
BLDG	7	UNIT	711	1608	QUEEN VICTORIA ST	103	N/S	PRIVATE STREET
			712			104		
			721			203		
			722			204		
			723			201		
			724			202		
BLDG	8	UNIT	811	1609	QUEEN VICTORIA ST	103	N/S	PRIVATE STREET

PACIFIC CREST

BLDG	8	UNIT	812 821 822 823 824	1609	QUEEN VICTORIA ST	104 203 204 201 202	N/S	PRIVATE STREET
BLDG	9	UNIT	911 912 913 914	1613	QUEEN VICTORIA ST	104 103 102 101	N/S	PRIVATE STREET
BLDG	10	UNIT	1011 1012 1013 1014 1021 1022 1023 1024	1617	QUEEN VICTORIA ST	102 103 104 101 202 203 204 201	N/S	PRIVATE STREET
BLDG	11	UNIT	1111 1112 1121 1122 1123 1124	1621	QUEEN VICTORIA ST	103 104 203 204 201 202	N/S	PRIVATE STREET
BLDG	12	UNIT	1211 1212 1221 1222 1223 1224	1700	QUEEN VICTORIA ST	103 104 203 204 201 202	N/S	PRIVATE STREET
BLDG	13	UNIT	1311 1312 1313 1314 1321 1322 1323 1324	1704	QUEEN VICTORIA ST	103 104 101 102 203 204 201 202	N/S	PRIVATE STREET
BLDG	14	UNIT	1411 1412 1413 1414	1708	QUEEN VICTORIA ST	101 102 103 104	N/S	PRIVATE STREET
BLDG	15	UNIT	1511 1512 1513 1514	1709	QUEEN VICTORIA ST	101 102 103 104	N/S	PRIVATE STREET
BLDG	16	UNIT	1611 1612 1621	1713	QUEEN VICTORIA ST	103 104 203	N/S	PRIVATE STREET

PACIFIC CREST

BLDG	16	UNIT	1622 1623 1624	1713	QUEEN VICTORIA ST	204 201 202	N/S	PRIVATE STREET
BLDG	17	UNIT	1711 1712 1713 1714 1721 1722 1723 1724	1717	QUEEN VICTORIA ST	101 102 103 104 201 202 203 204	N/S	PRIVATE STREET
BLDG	18	UNIT	1811 1812 1821 1822 1823 1824	1721	QUEEN VICTORIA ST	103 104 203 204 201 202	N/S	PRIVATE STREET
BLDG	19	UNIT	1911 1912 1913 1914 1921 1922 1923 1924	1720	QUEEN VICTORIA ST	101 102 103 104 201 202 203 204	N/S	PRIVATE STREET
BLDG	20	UNIT	2011 2012 2013 2014 2021 2022 2023 2024	1725	QUEEN VICTORIA ST	102 103 104 101 202 203 204 201	N/S	PRIVATE STREET
BLDG	21	UNIT	2111 2112 2113 2114 2121 2122 2123 2124	10245	KING HENRY AVE	101 102 103 104 201 202 203 204	E/W	PRIVATE STREET
BLDG	22	UNIT	2211 2212 2213 2214	10241	KING HENRY AVE	104 103 102 101	E/W	PRIVATE STREET
BLDG	23	UNIT	2311 2312 2313 2314	10237	KING HENRY AVE	103 102 101 104	E/W	PRIVATE STREET

PACIFIC CREST

BLDG	23	UNIT	2321 2322 2323 2324	10237	KING HENRY AVE	203 202 201 204	E/W	PRIVATE STREET
BLDG	24	UNIT	2411 2412 2413 2414 2421 2422 2423 2424	10233	KING HENRY AVE	101 102 103 104 201 202 203 204	E/W	PRIVATE STREET
BLDG	25	UNIT	2511 2512 2513 2514 2521 2522 2523 2525	10225	KING HENRY AVE	101 102 103 104 201 202 203 204	E/W	PRIVATE STREET
BLDG	26	UNIT	2611 2612 2613 2614 2621 2622 2623 2624	10221	KING HENRY AVE	101 102 103 104 201 202 203 204	E/W	PRIVATE STREET
BLDG	27	UNIT	2711 2712 2713 2714 2721 2722 2723 2724	10213	KING HENRY AVE	101 102 103 104 201 202 203 204	E/W	PRIVATE STREET
BLDG	28	UNIT	2811 2812 2813 2814 2821 2822 2823 2824	1709	KING JAMES ST	101 102 103 104 201 202 203 204	N/S	PRIVATE STREET
BLDG	29	UNIT	2911 2912 2913 2914 2921 2922	10217	KING HENRY AVE	102 103 104 101 202 203	E/W	PRIVATE STREET

PACIFIC CREST

BLDG	29	UNIT	2923 2924	10217	KING HENRY AVE	204 201	E/W	PRIVATE STREET
BLDG	30	UNIT	3011 3012 3013 3014 3021 3022 3023 3024	1705	KING JAMES ST	101 102 103 104 201 202 203 204	N/S	PRIVATE STREET
BLDG	31	UNIT	3111 3112 3113 3114 3121 3122 3123 3124	1701	KING JAMES ST	101 102 103 104 201 202 203 204	N/S	PRIVATE STREET
BLDG	32	UNIT	3211 3212 3213 3214 3221 3222 3223 3224	10209	CAMBORNE AVE	101 102 103 104 201 202 203 204	E/W	PRIVATE STREET
BLDG	33	UNIT	3311 3312 3313 3314 3321 3322 3323 3324	10205	CAMBORNE AVE	101 102 103 104 201 202 203 204	E/W	PRIVATE STREET
BLDG	34	UNIT	3411 3412 3413 3414 3421 3422 3423 3424	10201	CAMBORNE AVE	101 102 103 104 201 202 203 204	E/W	PRIVATE STREET
BLDG	35	UNIT	3511 3512 3521 3522 3523 3524	1608	SUSSEX ST	103 104 203 204 201 202	N/S	PRIVATE STREET
BLDG	36	UNIT	3611	1605	SUSSEX ST	103	N/S	PRIVATE STREET

PACIFIC CREST

BLDG	36	UNIT	3612 3621 3622 3623 3624	1605	SUSSEX ST	104 203 204 201 202	N/S	PRIVATE STREET
BLDG	37	UNIT	3711 3712 3713 3714	1604	SUSSEX ST	104 103 102 101	N/S	PRIVATE STREET
BLDG	38	UNIT	3811 3812 3821 3822 3823 3824	1601	SUSSEX ST	103 104 203 204 201 202	N/S	PRIVATE STREET
BLDG	39	UNIT	3911 3912 3913 3914 3921 3922 3923 3924	1600	SUSSEX ST	102 103 104 101 202 203 204 201	N/S	PRIVATE STREET
BLDG	40	UNIT	4011 4012 4013 4014	10201	PENRITH AVE	104 103 102 101	EW	PRIVATE STREET
BLDG	41	UNIT	4111 4112 4113 4114 4121 4122 4123 4124	10213	PENRITH AVE	101 102 103 104 201 202 203 204	EW	PRIVATE STREET

No addresses on CRESTDALE LANE or LANCASHIRE STREET (N/S)

ORIGINAL DATE: 6/03/1996

**CITY OF LAS VEGAS
PLANNING & DEVELOPMENT DEPARTMENT**



KYLE C WALTON, SENIOR PLANNER

FINAL MAP OF PACIFIC CREST

A CONDOMINIUM SUBDIVISION AND COMMON INTEREST COMMUNITY

BEING A SUBDIVISION OF LOT SIX (6) IN BLOCK G OF THE CROSSING AT SUMMERLIN VILLAGE B, UNIT 1 PHASE 3 AS SHOWN BY MAP THEREOF ON FILE IN BOOK 63, PAGE 92 OF PLATS IN THE CLARK COUNTY RECORDER'S OFFICE, CLARK COUNTY, NEVADA TOGETHER WITH LDT 1000 IN BLOCK A OF AMENDED PLAT OF PARCEL W IN THE CROSSING AT SUMMERLIN AS SHOWN BY MAP THEREOF ON FILE IN BOOK 71, PAGE 4 OF PLATS IN THE CLARK COUNTY RECORDER'S OFFICE, CLARK COUNTY, NEVADA LYING WITHIN SECTION 24, TOWNSHIP 20 SOUTH, RANGE 59 EAST, M.D.M., CITY OF LAS VEGAS, CLARK COUNTY, NEVADA

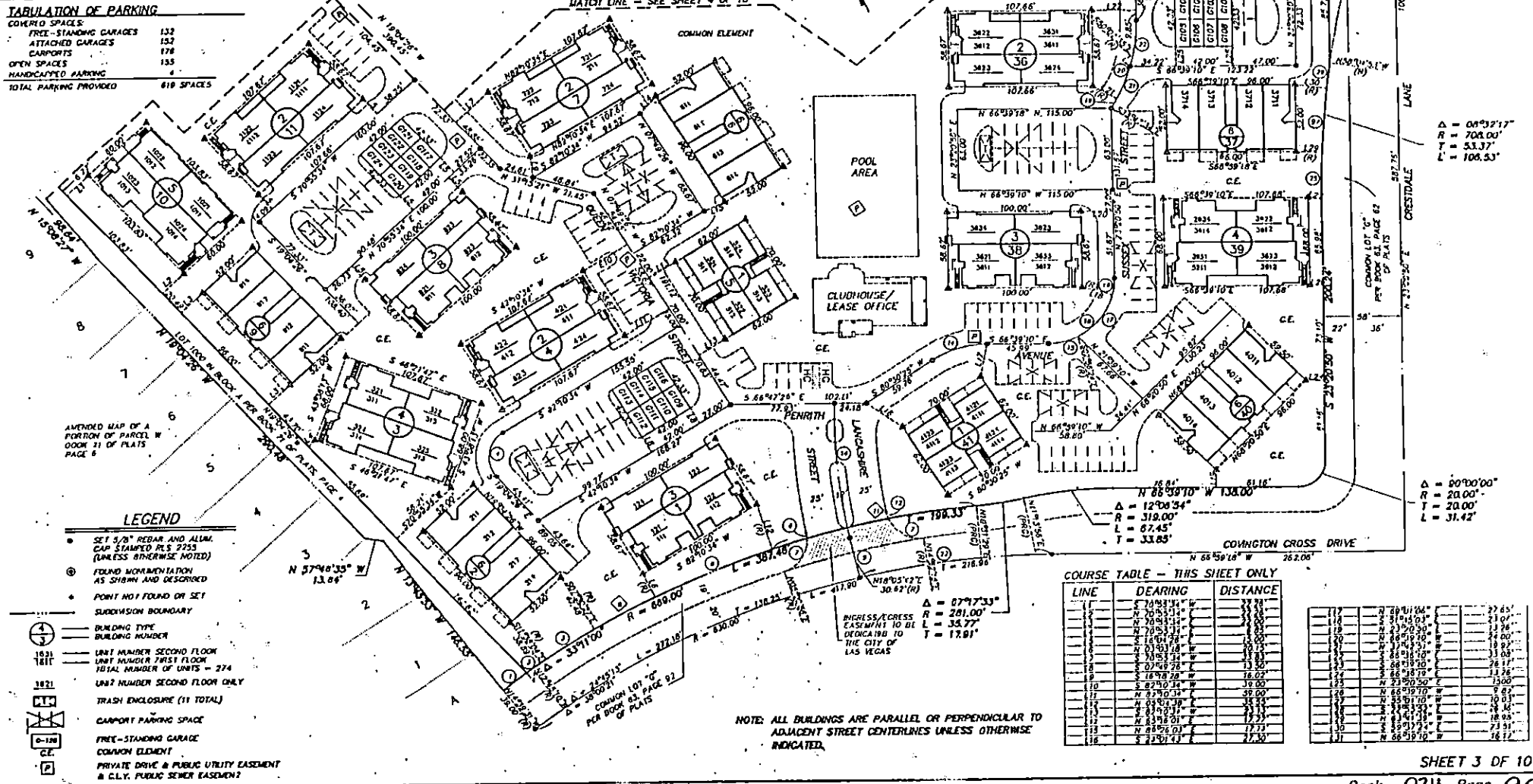
CURVE TABLE - THIS SHEET ONLY

CURVE	DELTA	RADIUS	LENGTH	TANGENT
1	01°52'37"	868.00	27.33	11.13
2	01°52'37"	868.00	13.08	4.81
3	04°02'37"	868.00	48.19	17.40
4	101°43'36"	25.00	34.98	26.81
5	01°52'37"	868.00	21.89	8.19
6	04°02'37"	868.00	48.19	17.40
7	23°02'33"	25.00	11.28	7.82
8	08°41'28"	25.00	3.90	2.65
9	09°17'31"	109.00	10.97	3.90
10	11°52'31"	189.00	103.05	31.81
11	13°28'31"	868.00	132.82	28.87
12	17°06'14"	25.00	5.20	3.45
13	17°06'14"	25.00	5.20	3.45
14	17°06'14"	25.00	5.20	3.45
15	17°06'14"	25.00	5.20	3.45
16	26°17'14"	50.00	21.81	11.48

18	24°53'13"	50.00	63.10	28.12
17	43°04'17"	50.00	25.80	16.07
19	15°04'07"	30.00	13.10	6.97
20	01°52'37"	125.00	4.55	1.62
21	28°02'01"	125.00	41.13	15.11
22	18°41'18"	125.00	38.24	12.94
23	21°43'18"	125.00	29.28	10.48
24	01°52'37"	208.00	11.58	4.16
25	01°52'37"	208.00	11.58	4.16
26	04°02'37"	208.00	40.25	14.78
27	04°02'37"	208.00	40.25	14.78
28	04°02'37"	208.00	40.25	14.78
29	04°02'37"	208.00	40.25	14.78

TABULATION OF PARKING

COVERED SPACES:	
FREE-STANDING GARAGES	132
ATTACHED GARAGES	152
CARPORTS	178
OPEN SPACES	135
HANDICAPPED PARKING	4
TOTAL PARKING PROVIDED	619 SPACES



COURSE TABLE - THIS SHEET ONLY

LINE	DEARING	DISTANCE
1	S 70°31'14" W	27.88
2	N 70°31'14" W	27.88
3	S 70°31'14" W	27.88
4	N 70°31'14" W	27.88
5	S 70°31'14" W	27.88
6	N 70°31'14" W	27.88
7	S 70°31'14" W	27.88
8	N 70°31'14" W	27.88
9	S 70°31'14" W	27.88
10	N 70°31'14" W	27.88
11	S 70°31'14" W	27.88
12	N 70°31'14" W	27.88
13	S 70°31'14" W	27.88
14	N 70°31'14" W	27.88
15	S 70°31'14" W	27.88
16	N 70°31'14" W	27.88

17	S 89°11'04" W	27.85
18	N 89°11'04" W	27.85
19	S 89°11'04" W	27.85
20	N 89°11'04" W	27.85
21	S 89°11'04" W	27.85
22	N 89°11'04" W	27.85
23	S 89°11'04" W	27.85
24	N 89°11'04" W	27.85
25	S 89°11'04" W	27.85
26	N 89°11'04" W	27.85
27	S 89°11'04" W	27.85
28	N 89°11'04" W	27.85
29	S 89°11'04" W	27.85
30	N 89°11'04" W	27.85
31	S 89°11'04" W	27.85
32	N 89°11'04" W	27.85

NOTE: ALL BUILDINGS ARE PARALLEL OR PERPENDICULAR TO ADJACENT STREET CENTERLINES UNLESS OTHERWISE INDICATED.

