

# LONE MOUNTAIN CONDOMINIUMS

Recorded in Book 104 Page 19 of Plats

200 Scale Map Location: K-12-2

Fire Dept. District Map # 1914:18, 19; 29

MASTER SITE ADDRESS: 10201 W. ALEXANDER RD

BLDG	1	UNIT	101 102 103 104 201 202 203	10200	DEERFIELD BEACH AVE	104 103 102 101 201 203 202	E/W	PRIVATE STREET
BLDG	2	UNIT	101 102 103 104 201 202 203	10201	DEERFIELD BEACH AVE	104 103 102 101 201 203 202	E/W	PRIVATE STREET
BLDG	3	UNIT	101 102 103 104 201 202	10210	DEERFIELD BEACH AVE	104 103 102 101 202 201	E/W	PRIVATE STREET
BLDG	4	UNIT	101 102 103 104 201 202	10211	DEERFIELD BEACH AVE	104 103 102 101 202 201	E/W	PRIVATE STREET
BLDG	5	UNIT	101 102 103 104 201 202 203	10220	DEERFIELD BEACH AVE	104 103 102 101 201 203 202	E/W	PRIVATE STREET
BLDG	6	UNIT	101 102 103 104 201 202 203	10221	DEERFIELD BEACH AVE	104 103 102 101 201 203 202	E/W	PRIVATE STREET
BLDG	7	UNIT	101 102 103	10230	DEERFIELD BEACH AVE	104 103 102	E/W	PRIVATE STREET

## LONE MOUNTAIN CONDOMINIUMS

BLDG	7	UNIT	104 201 202	10230	DEERFIELD BEACH AVE	101 202 201	E/W	PRIVATE STREET
BLDG	8	UNIT	101 102 103 104 201 202	10231	DEERFIELD BEACH AVE	104 103 102 101 202 201	E/W	PRIVATE STREET
BLDG	9	UNIT	101 102 201	3975	PALM BEACH ST	101 102 201	N/S	PRIVATE STREET
BLDG	10	UNIT	101 102 202	3965	PALM BEACH ST	102 101 201	N/S	PRIVATE STREET
BLDG	11	UNIT	101 102 201 202	3955	PALM BEACH ST	102 101 202 201	N/S	PRIVATE STREET
BLDG	12	UNIT	101 102 201 202	3945	PALM BEACH ST	101 102 201 202	N/S	PRIVATE STREET
BLDG	13	UNIT	101 102 201	3935	PALM BEACH ST	101 102 201	N/S	PRIVATE STREET
BLDG	14	UNIT	101 102 201 202	3925	PALM BEACH ST	101 102 201 202	N/S	PRIVATE STREET
BLDG	15	UNIT	101 102 201	3915	PALM BEACH ST	101 102 201	N/S	PRIVATE STREET
BLDG	16	UNIT	101 102 201	10241	DELRAY BEACH AVE	102 101 201	E/W	PRIVATE STREET
BLDG	17	UNIT	101 102 201	10231	DELRAY BEACH AVE	101 102 201	E/W	PRIVATE STREET
BLDG	18	UNIT	101 102 103 104 201 202	10230	DELRAY BEACH AVE	104 103 102 101 202 201	E/W	PRIVATE STREET

## LONE MOUNTAIN CONDOMINIUMS

BLDG	19	UNIT	101 102 201	10221	DELRAY BEACH AVE	102 101 201	EW	PRIVATE STREET
BLDG	20	UNIT	101 102 103 104 201 202 203	10220	DELRAY BEACH AVE	104 103 102 101 201 203 202	EW	PRIVATE STREET
BLDG	21	UNIT	101 102 201	10211	DELRAY BEACH AVE	101 102 201	EW	PRIVATE STREET
BLDG	22	UNIT	101 102 103 104 201 202	10210	DELRAY BEACH AVE	104 103 102 101 202 201	EW	PRIVATE STREET
BLDG	23	UNIT	101 102 103 104 201 202 203	10200	DELRAY BEACH AVE	104 103 102 101 201 203 202	EW	PRIVATE STREET
BLDG	24	UNIT	101 102 103 104 201 202	10190	DELRAY BEACH AVE	104 103 102 101 202 201	EW	PRIVATE STREET
BLDG	25	UNIT	101 102 201	3850	BELLE GLADE ST	102 101 201	N/S	PRIVATE STREET
BLDG	26	UNIT	101 102 103 104 201 202 203	3840	BELLE GLADE ST	101 102 103 104 201 202 203	N/S	PRIVATE STREET
BLDG	27	UNIT	101 102 103 104 201 202	3832	ORMOND BEACH ST	104 101 102 103 204 201	N/S	PRIVATE STREET

## LONE MOUNTAIN CONDOMINIUMS

BLDG	27	UNIT	203 204	3832	ORMOND BEACH ST	202 203	N/S	PRIVATE STREET
BLDG	28	UNIT	101 102 103 104 201 202 203 204	3825	ORMOND BEACH ST	104 101 102 103 204 201 202 203	N/S	PRIVATE STREET
BLDG	29	UNIT	101 102 103 104 201 202 203 204	3822	ORMOND BEACH ST	104 101 102 103 204 201 202 203	N/S	PRIVATE STREET
BLDG	30	UNIT	101 102 103 104 201 202 203 204	3815	ORMOND BEACH ST	104 101 102 103 204 201 202 203	N/S	PRIVATE STREET
BLDG	31	UNIT	101 102 103 104 201 202 203 204	3812	ORMOND BEACH ST	104 101 102 103 204 201 202 203	N/S	PRIVATE STREET
BLDG	32	UNIT	101 102 103 104 201 202 203 204	3805	ORMOND BEACH ST	104 101 102 103 204 201 202 203	N/S	PRIVATE STREET
BLDG	33	UNIT	101 102 103 104 201 202 203 204	3830	WIGGINS BAY ST	104 101 102 103 204 201 202 203	N/S	PRIVATE STREET

## LONE MOUNTAIN CONDOMINIUMS

BLDG	34	UNIT	101 102 103 104 201 202 203 204	3820	WIGGINS BAY ST	104 101 102 103 204 201 202 203	N/S	PRIVATE STREET
BLDG	35	UNIT	101 102 103 104 201 202 203 204	3810	WIGGINS BAY ST	104 101 102 103 204 201 202 203	N/S	PRIVATE STREET
BLDG	36	UNIT	101 102 103 104 201 202 203 204	3805	JUNO BEACH ST	104 101 103 102 204 201 203 202	N/S	PRIVATE STREET
BLDG	37	UNIT	101 102 103 104 201 202 203 204	3810	JUNO BEACH ST	104 101 102 103 204 201 202 203	N/S	PRIVATE STREET
BLDG	38	UNIT	101 102 103 104 201 202 203 204	3815	JUNO BEACH ST	104 101 103 102 204 201 203 202	N/S	PRIVATE STREET
BLDG	39	UNIT	101 102 103 104 201 202 203 204	3820	JUNO BEACH ST	104 101 102 103 204 201 202 203	N/S	PRIVATE STREET
BLDG	40	UNIT	101 102	3825	JUNO BEACH ST	104 101	N/S	PRIVATE STREET

## LONE MOUNTAIN CONDOMINIUMS

BLDG	40	UNIT	103 104 201 202 203 204	3825	JUNO BEACH ST	103 102 204 201 203 202	N/S	PRIVATE STREET
BLDG	41	UNIT	101 102 103 104 201 202 203 204	3830	JUNO BEACH ST	104 101 102 103 204 201 202 203	N/S	PRIVATE STREET
BLDG	42	UNIT	101 102 103 104 201 202 203 204	10125	CEDAR KEY AVE	104 101 102 103 204 201 202 203	E/W	PRIVATE STREET
BLDG	43	UNIT	101 102 103 104 201 202 203 204	3840	JUNO BEACH ST	104 101 102 103 204 201 202 203	N/S	PRIVATE STREET
BLDG	44	UNIT	101 102 103 104 201 202 203 204	3850	JUNO BEACH ST	104 101 102 103 204 201 202 203	N/S	PRIVATE STREET
BLDG	45	UNIT	101 102 103 104 201 202 203 204	10120	CEDAR KEY AVE	104 101 103 102 204 201 203 202	E/W	PRIVATE STREET
BLDG	46	UNIT	101 102 103 104	10155	CEDAR KEY AVE	104 101 102 103	E/W	PRIVATE STREET

## LONE MOUNTAIN CONDOMINIUMS

BLDG	46	UNIT	201 202 203 204	10155	CEDAR KEY AVE	204 201 202 203	E/W	PRIVATE STREET
BLDG	47	UNIT	101 102 103 104 201 202 203 204	10150	CEDAR KEY AVE	104 101 103 102 204 201 203 202	E/W	PRIVATE STREET
BLDG	48	UNIT	101 102 103 104 201 202 203 204	3845	WIGGINS BAY ST	104 101 102 103 204 201 202 203	N/S	PRIVATE STREET
BLDG	49	UNIT	101 102 103 104 201 202 203 204	3855	WIGGINS BAY ST	104 101 102 103 204 201 202 203	N/S	PRIVATE STREET
BLDG	50	UNIT	101 102 103 104 201 202	10180	DELRAY BEACH AVE	104 103 102 101 202 201	E/W	PRIVATE STREET
BLDG	51	UNIT	101 102 103 104 201 202 203	10191	DEERFIELD BEACH AVE	101 102 103 104  201 202	E/W	PRIVATE STREET
BLDG	52	UNIT	101 102 103 104 201 202 203	10181	DEERFIELD BEACH AVE	104 103 102 101 203 202 201	E/W	PRIVATE STREET
BLDG	53	UNIT	101	10190	DEERFIELD BEACH AVE	104	E/W	PRIVATE STREET

## LONE MOUNTAIN CONDOMINIUMS

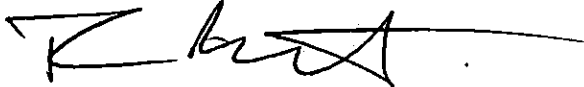
BLDG	53	UNIT	102 103 104 201 202 203	10190	DEERFIELD BEACH AVE	103 102 101 201 203 202	E/W	PRIVATE STREET
BLDG	54	UNIT	101 102 103 104 201 202 203	10180	DEERFIELD BEACH AVE	104 103 102 101 201 203 202	E/W	PRIVATE STREET
Common Area		A B	10105 10107		MIAMI SPRINGS AVE		E/W	PRIVATE STREET
Common Area		C	3822		JUNO BEACH ST		N/S	PRIVATE STREET
Common Area		D E F	3969 3965 3961		SARASOTA ST		N/S	PRIVATE STREET
Common Area		G	10203		MIAMI SPRINGS AVE		E/W	PRIVATE STREET
Common Area		H	3819		JUNO BEACH ST		N/S	PRIVATE STREET
Common Area		I	3818		ORMOND BEACH ST		N/S	PRIVATE STREET
Common Area		J	10190		VERO BEACH AVE		E/W	PRIVATE STREET
Common Area		K	3936		PALM BEACH ST		N/S	PRIVATE STREET
Common Area		L	3939		BELLE GLADE ST		N/S	PRIVATE STREET
Common Area		M	3937		SARASOTA ST		N/S	PRIVATE STREET
Common Area		N	3939		CIRCINUS ST		N/S	PRIVATE STREET
Common Area		O	3937		WIGGINS BAY ST		N/S	PRIVATE STREET

## LONE MOUNTAIN CONDOMINIUMS

There are no addresses on: HUALAPAI WAY (N/S Public Street); HORSESHOE BEACH ST. (N/S Private Street); BIANCA AURORA AVE., KLEBBA AVE., SOFT KASHMIR AVE. or TAYGETA AVE. (E/W Private Streets).

ORIGINAL DATE: 4/01/2002

CITY OF LAS VEGAS  
PLANNING & DEVELOPMENT DEPARTMENT

A handwritten signature in black ink, appearing to read 'T Burkart', with a long horizontal line extending to the right.

THOMAS BURKART, PLANNER I

# LONE MOUNTAIN CONDOMINIUMS

Recorded in Book 104 Page 19 of Plats

200 Scale Map Location: K-12-2

Fire Dept. District Map # 1914:18, 19; 29

MASTER SITE ADDRESS: 10201 W. ALEXANDER RD

BLDG	1	UNIT	101 102 103 104 201 202 203	10200	DEERFIELD BEACH AVE	104 103 102 101 201 203 202	E/W	PRIVATE STREET
BLDG	2	UNIT	101 102 103 104 201 202 203	10201	DEERFIELD BEACH AVE	104 103 102 101 201 203 202	E/W	PRIVATE STREET
BLDG	3	UNIT	101 102 103 104 201 202	10210	DEERFIELD BEACH AVE	104 103 102 101 202 201	E/W	PRIVATE STREET
BLDG	4	UNIT	101 102 103 104 201 202	10211	DEERFIELD BEACH AVE	104 103 102 101 202 201	E/W	PRIVATE STREET
BLDG	5	UNIT	101 102 103 104 201 202 203	10220	DEERFIELD BEACH AVE	104 103 102 101 201 203 202	E/W	PRIVATE STREET
BLDG	6	UNIT	101 102 103 104 201 202 203	10221	DEERFIELD BEACH AVE	104 103 102 101 201 203 202	E/W	PRIVATE STREET
BLDG	7	UNIT	101 102 103	10230	DEERFIELD BEACH AVE	104 103 102	E/W	PRIVATE STREET

## LONE MOUNTAIN CONDOMINIUMS

BLDG	7	UNIT	104 201 202	10230	DEERFIELD BEACH AVE	101 202 201	E/W	PRIVATE STREET
BLDG	8	UNIT	101 102 103 104 201 202	10231	DEERFIELD BEACH AVE	104 103 102 101 202 201	E/W	PRIVATE STREET
BLDG	9	UNIT	101 102 201	3975	PALM BEACH ST	101 102 201	N/S	PRIVATE STREET
BLDG	10	UNIT	101 102 202	3965	PALM BEACH ST	102 101 201	N/S	PRIVATE STREET
BLDG	11	UNIT	101 102 201 202	3955	PALM BEACH ST	102 101 202 201	N/S	PRIVATE STREET
BLDG	12	UNIT	101 102 201 202	3945	PALM BEACH ST	101 102 201 202	N/S	PRIVATE STREET
BLDG	13	UNIT	101 102 201	3935	PALM BEACH ST	101 102 201	N/S	PRIVATE STREET
BLDG	14	UNIT	101 102 201 202	3925	PALM BEACH ST	101 102 201 202	N/S	PRIVATE STREET
BLDG	15	UNIT	101 102 201	3915	PALM BEACH ST	101 102 201	N/S	PRIVATE STREET
BLDG	16	UNIT	101 102 201	10241	DELRAY BEACH AVE	102 101 201	E/W	PRIVATE STREET
BLDG	17	UNIT	101 102 201	10231	DELRAY BEACH AVE	101 102 201	E/W	PRIVATE STREET
BLDG	18	UNIT	101 102 103 104 201 202	10230	DELRAY BEACH AVE	104 103 102 101 202 201	E/W	PRIVATE STREET

## LONE MOUNTAIN CONDOMINIUMS

BLDG	19	UNIT	101 102 201	10221	DELRAY BEACH AVE	102 101 201	E/W	PRIVATE STREET
BLDG	20	UNIT	101 102 103 104 201 202 203	10220	DELRAY BEACH AVE	104 103 102 101 201 203 202	E/W	PRIVATE STREET
BLDG	21	UNIT	101 102 201	10211	DELRAY BEACH AVE	101 102 201	E/W	PRIVATE STREET
BLDG	22	UNIT	101 102 103 104 201 202	10210	DELRAY BEACH AVE	104 103 102 101 202 201	E/W	PRIVATE STREET
BLDG	23	UNIT	101 102 103 104 201 202 203	10200	DELRAY BEACH AVE	104 103 102 101 201 203 202	E/W	PRIVATE STREET
BLDG	24	UNIT	101 102 103 104 201 202	10190	DELRAY BEACH AVE	104 103 102 101 202 201	E/W	PRIVATE STREET
BLDG	25	UNIT	101 102 201	3850	BELLE GLADE ST	102 101 201	N/S	PRIVATE STREET
BLDG	26	UNIT	101 102 103 104 201 202 203	3840	BELLE GLADE ST	101 102 103 104 201 202 203	N/S	PRIVATE STREET
BLDG	27	UNIT	101 102 103 104 201 202	3832	ORMOND BEACH ST	104 101 102 103 204 201	N/S	PRIVATE STREET

## LONE MOUNTAIN CONDOMINIUMS

BLDG	27	UNIT	203 204	3832	ORMOND BEACH ST	202 203	N/S	PRIVATE STREET
BLDG	28	UNIT	101 102 103 104 201 202 203 204	3825	ORMOND BEACH ST	104 101 102 103 204 201 202 203	N/S	PRIVATE STREET
BLDG	29	UNIT	101 102 103 104 201 202 203 204	3822	ORMOND BEACH ST	104 101 102 103 204 201 202 203	N/S	PRIVATE STREET
BLDG	30	UNIT	101 102 103 104 201 202 203 204	3815	ORMOND BEACH ST	104 101 102 103 204 201 202 203	N/S	PRIVATE STREET
BLDG	31	UNIT	101 102 103 104 201 202 203 204	3812	ORMOND BEACH ST	104 101 102 103 204 201 202 203	N/S	PRIVATE STREET
BLDG	32	UNIT	101 102 103 104 201 202 203 204	3805	ORMOND BEACH ST	104 101 102 103 204 201 202 203	N/S	PRIVATE STREET
BLDG	33	UNIT	101 102 103 104 201 202 203 204	3830	WIGGINS BAY ST	104 101 102 103 204 201 202 203	N/S	PRIVATE STREET

## LONE MOUNTAIN CONDOMINIUMS

BLDG	34	UNIT	101 102 103 104 201 202 203 204	3820	WIGGINS BAY ST	104 101 102 103 204 201 202 203	N/S	PRIVATE STREET
BLDG	35	UNIT	101 102 103 104 201 202 203 204	3810	WIGGINS BAY ST	104 101 102 103 204 201 202 203	N/S	PRIVATE STREET
BLDG	36	UNIT	101 102 103 104 201 202 203 204	3805	JUNO BEACH ST	104 101 103 102 204 201 203 202	N/S	PRIVATE STREET
BLDG	37	UNIT	101 102 103 104 201 202 203 204	3810	JUNO BEACH ST	104 101 102 103 204 201 202 203	N/S	PRIVATE STREET
BLDG	38	UNIT	101 102 103 104 201 202 203 204	3815	JUNO BEACH ST	104 101 103 102 204 201 203 202	N/S	PRIVATE STREET
BLDG	39	UNIT	101 102 103 104 201 202 203 204	3820	JUNO BEACH ST	104 101 102 103 204 201 202 203	N/S	PRIVATE STREET
BLDG	40	UNIT	101 102	3825	JUNO BEACH ST	104 101	N/S	PRIVATE STREET

## LONE MOUNTAIN CONDOMINIUMS

BLDG	40	UNIT	103 104 201 202 203 204	3825	JUNO BEACH ST	103 102 204 201 203 202	N/S	PRIVATE STREET
BLDG	41	UNIT	101 102 103 104 201 202 203 204	3830	JUNO BEACH ST	104 101 102 103 204 201 202 203	N/S	PRIVATE STREET
BLDG	42	UNIT	101 102 103 104 201 202 203 204	10125	CEDAR KEY AVE	104 101 102 103 204 201 202 203	E/W	PRIVATE STREET
BLDG	43	UNIT	101 102 103 104 201 202 203 204	3840	JUNO BEACH ST	104 101 102 103 204 201 202 203	N/S	PRIVATE STREET
BLDG	44	UNIT	101 102 103 104 201 202 203 204	3850	JUNO BEACH ST	104 101 102 103 204 201 202 203	N/S	PRIVATE STREET
BLDG	45	UNIT	101 102 103 104 201 202 203 204	10120	CEDAR KEY AVE	104 101 103 102 204 201 203 202	E/W	PRIVATE STREET
BLDG	46	UNIT	101 102 103 104	10155	CEDAR KEY AVE	104 101 102 103	E/W	PRIVATE STREET

## LONE MOUNTAIN CONDOMINIUMS

BLDG	46	UNIT	201 202 203 204	10155	CEDAR KEY AVE	204 201 202 203	E/W	PRIVATE STREET
BLDG	47	UNIT	101 102 103 104 201 202 203 204	10150	CEDAR KEY AVE	104 101 103 102 204 201 203 202	E/W	PRIVATE STREET
BLDG	48	UNIT	101 102 103 104 201 202 203 204	3845	WIGGINS BAY ST	104 101 102 103 204 201 202 203	N/S	PRIVATE STREET
BLDG	49	UNIT	101 102 103 104 201 202 203 204	3855	WIGGINS BAY ST	104 101 102 103 204 201 202 203	N/S	PRIVATE STREET
BLDG	50	UNIT	101 102 103 104 201 202	10180	DELRAY BEACH AVE	104 103 102 101 202 201	E/W	PRIVATE STREET
BLDG	51	UNIT	101 102 103 104 201 202 203	10191	DEERFIELD BEACH AVE	101 102 103 104  201 202	E/W	PRIVATE STREET
BLDG	52	UNIT	101 102 103 104 201 202 203	10181	DEERFIELD BEACH AVE	104 103 102 101 203 202 201	E/W	PRIVATE STREET
BLDG	53	UNIT	101	10190	DEERFIELD BEACH AVE	104	E/W	PRIVATE STREET

## LONE MOUNTAIN CONDOMINIUMS

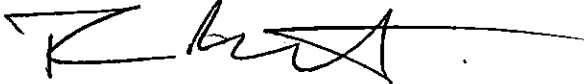
BLDG	53	UNIT	102 103 104 201 202 203	10190	DEERFIELD BEACH AVE	103 102 101 201 203 202	E/W	PRIVATE STREET
BLDG	54	UNIT	101 102 103 104 201 202 203	10180	DEERFIELD BEACH AVE	104 103 102 101 201 203 202	E/W	PRIVATE STREET
Common Area		A B	10105 10107		MIAMI SPRINGS AVE		E/W	PRIVATE STREET
Common Area		C	3822		JUNO BEACH ST		N/S	PRIVATE STREET
Common Area		D E F	3969 3965 3961		SARASOTA ST		N/S	PRIVATE STREET
Common Area		G	10203		MIAMI SPRINGS AVE		E/W	PRIVATE STREET
Common Area		H	3819		JUNO BEACH ST		N/S	PRIVATE STREET
Common Area		I	3818		ORMOND BEACH ST		N/S	PRIVATE STREET
Common Area		J	10190		VERO BEACH AVE		E/W	PRIVATE STREET
Common Area		K	3936		PALM BEACH ST		N/S	PRIVATE STREET
Common Area		L	3939		BELLE GLADE ST		N/S	PRIVATE STREET
Common Area		M	3937		SARASOTA ST		N/S	PRIVATE STREET
Common Area		N	3939		CIRCINUS ST		N/S	PRIVATE STREET
Common Area		O	3937		WIGGINS BAY ST		N/S	PRIVATE STREET

## LONE MOUNTAIN CONDOMINIUMS

There are no addresses on: HUALAPAI WAY (N/S Public Street); HORSESHOE BEACH ST. (N/S Private Street); BIANCA AURORA AVE., KLEBBA AVE., SOFT KASHMIR AVE. or TAYGETA AVE. (E/W Private Streets).

ORIGINAL DATE: 4/01/2002

CITY OF LAS VEGAS  
PLANNING & DEVELOPMENT DEPARTMENT

A handwritten signature in black ink, appearing to read 'T Burkart', with a long horizontal line extending to the right.

THOMAS BURKART, PLANNER I

SL Pedestal 10793 W Alexander

LONE MOUNTAIN CONDOMINIUMS  
Recorded Plat

**RECORDED**

*w/ Certificate  
of Amendment  
Sheets*

Permit Expires 180 Days After Abandonment of Work

2310-051-1/97

<b>PERMIT</b>		<b>CITY OF LAS VEGAS CENTRAL PERMITS</b>		APP. REC'D. DATE 12/20/02	PLAN CHK. NO. L-3975-02	PERMIT NO. 02022678
JOB / BUSINESS NAME <del>ARABIAN ROAD PROJECT</del> <b>LOWE MOUNTAIN CONDOS</b>		JOB ADDRESS 10351 W ALEXANDER RD		ZIP	ADR TYPE	APPLICATION NO. 567071-6
SUBDIVISION RECORDED NAME <del>NO RECORDED SUB</del> <b>LOWE MOUNTAIN CONDOS</b>		UNIT	PHASE	LOT 0	BLOCK 0	JOB PHONE 896-0440
LEGAL DESCRIPTION SPLIT SPLIT SPLIT		SEC. / TWN. / RGE.		SUBDIVISION MARKETING NAME		MODEL NO. L-3975-02
CONTRACTOR NAME METRO ELECTRIC		CONTR. PHONE NO. 896-0440		CONTR. FAX NO.		NV CONTR. NO. 37922
CONTRACTOR ADDRESS		CITY		STATE		ZIP
OWNER NAME <del>ARABIAN ROAD PROJECT</del> <b>Low Mountain Condos</b>		OWNER PHONE		OWNER FAX		CITY BUS. LIC. NO. 012-03391
OWNER'S MAILING ADDRESS		CITY		STATE		ZIP
WORK DESCRIPTION ELEC FOR ACCESS GATE/AVI LOOP		WORK TYPE	COM/APT/RES CON	ACRES	SETBACK END FRONT REAR SIDE	HEATED AREA UNHEATED AREA SHADE STRUCTURE
<p>1. The Contractor's Signature below denotes authority from the owner to sign in his behalf and that the owner is aware of all requirements of this application.</p> <p>2. I have read and understand the contents of this application. I hereby state that the information I have supplied on this application is true and correct.</p> <p><i>Kaw Rennie</i></p>		LAND USE ZONE	ZONING CASE NO.		NO. STORIES	SEPTIC (Y/N)
		OCC. GROUP	CONST. TYPE		SEWER UNITS/CODE	FIRE MAP NO. 1914 1B
		NO. DWELL UNITS	SPRINK. REQ. (Y/N)		REDEV. AREA (Y/N)	CODE YEAR BMP E
		PARK DIST.	TORTOISE ZONE (E/P)		ASSESS. PARCEL NO.	ISSUE DATE 12/20/02
CONTACT PHONE # _____ SIGNATURE: OWNER <input type="checkbox"/> OWNER REP. <input type="checkbox"/> CONTR. <input type="checkbox"/>		WARD NO.	CENSUS TRACT NO.		ASSESS. PARCEL NO.	CODE YEAR BMP E
NEW ADD REM	STATED VALUATION \$ 1500	CORRECTED VALUATION \$ 1500		READY DATE	ISSUE DATE 12/20/02	
COMMENTS		PERMIT TYPE	DESCRIPTION		FEES	
			21.0 ELECTRICAL PERMIT - IT		34.00	
			86.0 ADMIN FEE		35.00	
<p><i>ADD PWR PED'L CEC 3822 JUNO BEACH ST 2003.01.21 - ATONEY</i></p> <p><i>TMP PWR POLE 10210 # DEERFIELD BEACH AV</i></p> <p><i>2003.03.14</i></p>						
SPECIAL CONDITIONS:		APA BEG. BAL.	EXEMPT NO.		TOTAL FEES 68.00	
		APA END BAL.	RECEIPT NO.		LESS PREVIOUS PAID 0.00	
		APA ACCT. NO.	RECEIPT NO. 102481		AMOUNT DUE 68.00	



CONSULTING ENGINEERS • PLANNERS • SURVEYORS  
PROVIDING QUALITY PROFESSIONAL  
SERVICES SINCE 1960

April 10, 2002  
W.O.#5829  
Page 1 of 8

Rita M. Lumos, P.L.S.  
City of Las Vegas Surveyor

**Document:**

**CERTIFICATE OF AMENDMENT – LONE MOUNTAIN  
CONDOMINIUMS; BOOK 104 / PAGE 19 OF PLATS**

**Legal  
Description:**

(A COMMON INTEREST COMMUNITY) BEING A SUBDIVISION  
WITHIN THE NORTHEAST QUARTER (NE1/4) OF THE  
NORTHEAST QUARTER (NE1/4) OF SECTION 12, TOWNSHIP 20  
SOUTH, RANGE 59 EAST, M.D.M., CITY OF LAS VEGAS,  
CLARK COUNTY, NEVADA

**Recording  
Date:**

4/01/02

**Caption**

THE PURPOSE OF THIS CERTIFICATE OF AMENDMENT IS TO  
CORRECT SCRIVENERS ERRORS FOR UNIT NUMBERS AND  
UNIT TYPE FOR BUILDING NUMBERS 11, 12, 14, 25, 51, 52.  
AND WHICH ARE MORE CLEARLY DEFINED ON THE  
ATTACHED EXHIBITS A THROUGH F.

April 10, 2002  
Page 8 of 8

**Document:**

**CERTIFICATE OF AMENDMENT - LONE MOUNTAIN  
CONDOMINIUMS; BOOK 104 / PAGE 19 OF PLATS**

This document supersedes the original recorded document.

I do hereby declare that this correction does not change the physical location of any survey monument, property line, or boundary line.

Respectfully,

Anthony Zicari, P.L.S.  
Nevada License #11449



City of Las Vegas Surveyor's Certificate

I hereby certify that I have examined the Certificate of Amendment and that the changes to the original document specified therein are provided for in the applicable sections of N.R.S. 278.010 to 278.630 inclusive, N.R.S. 625.340 to 625.380 inclusive, and local ordinances adopted pursuant thereto, and I am satisfied that this Certificate of Amendment so amends or corrects the document as to make it technically correct.

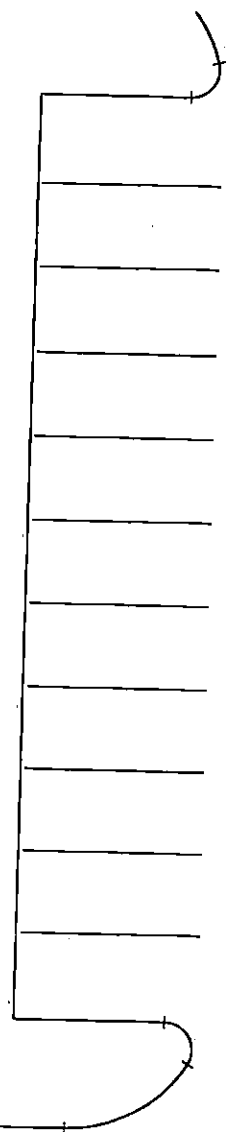
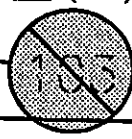
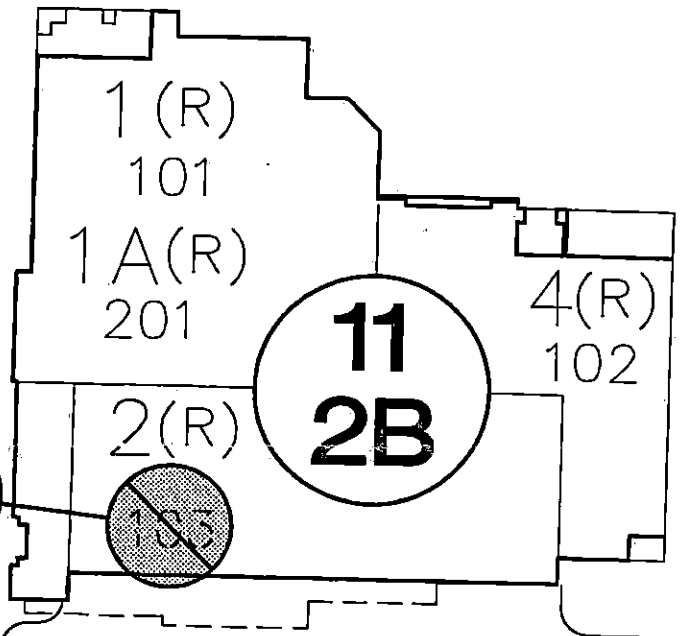
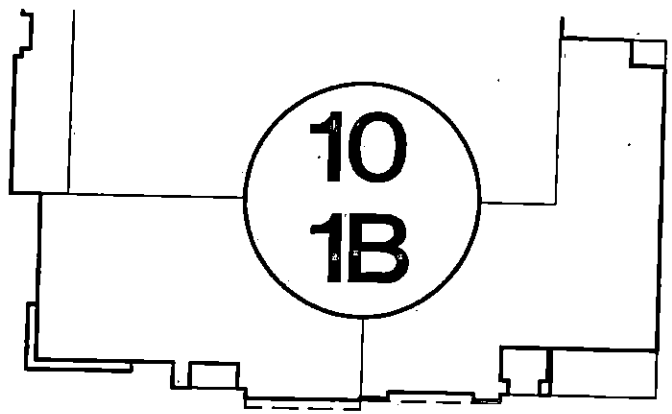
*Rita M. Lumos*  
4/11/02

Rita M. Lumos  
City of Las Vegas Surveyor  
P.L.S. #5094

**WHEN RECORDED, MAIL TO:**

VTN NEVADA  
2727 S. RAINBOW BLVD  
LAS VEGAS, NV. 89102

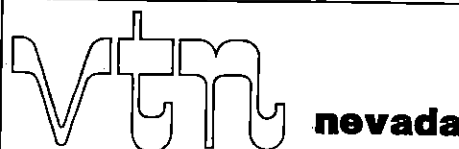
CLARK COUNTY, NEVADA  
JUDITH A. VANDEVER, RECORDER  
RECORDED AT REQUEST OF:  
VTN NEVADA  
04-11-2002 13:40 ARD 8  
BOOK: 20020411 INST: 01390  
FEE: 21.00 RPTT: .00  
CA PLAT  
CONFORMED COPY HAS NOT BEEN COMPARED TO THE ORIGINAL



**BIANCA AURORA AVENUE**

**LONE MOUNTAIN CONDOMINIUMS  
BOOK 104 OF PLATS, AT PAGE 19**

G:\5829\5829SRVY.DWG (BR-CFA01)



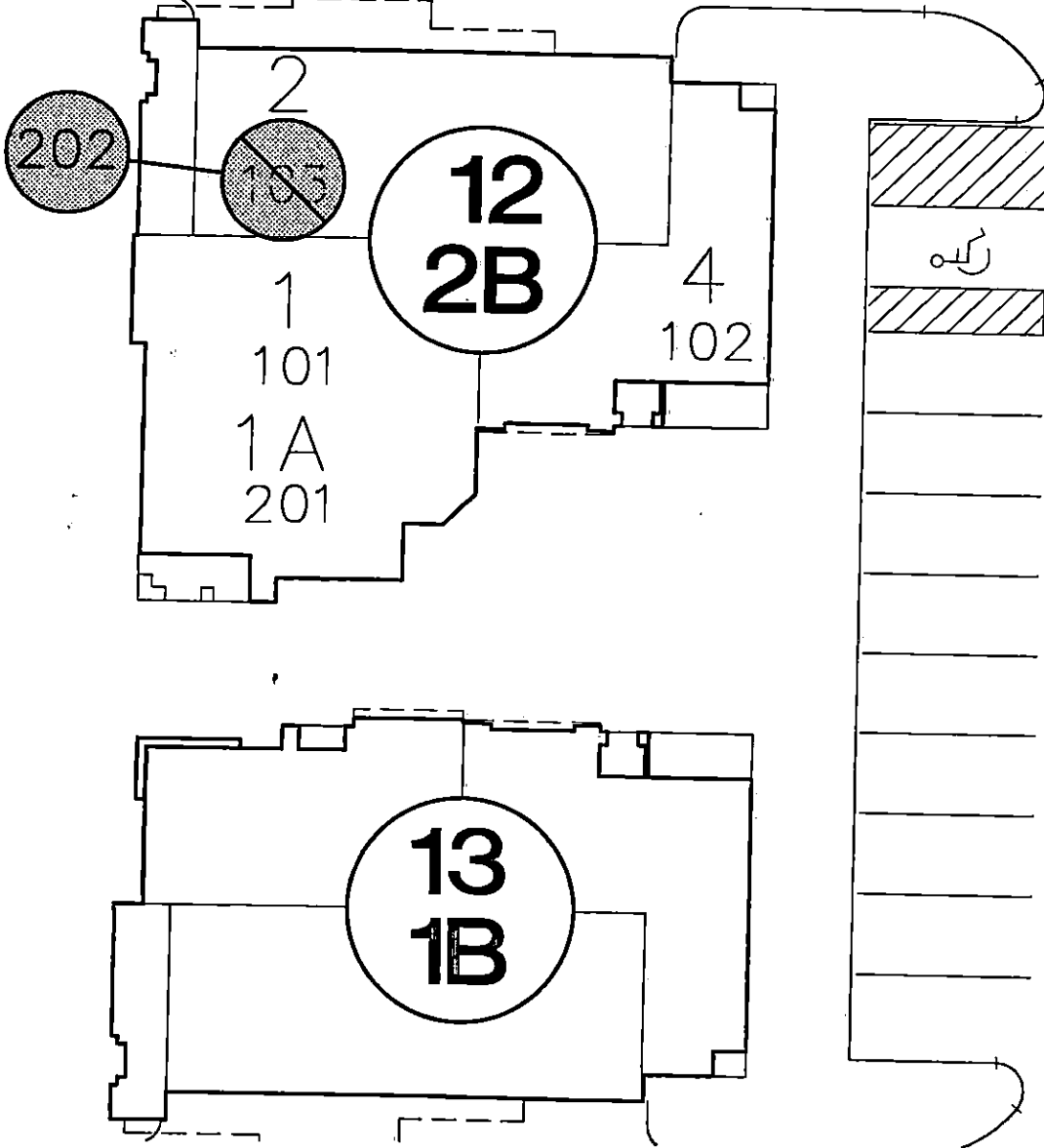
2727 S. RAINBOW BOULEVARD  
LAS VEGAS, NEVADA 89146-5148

PROJECT:  
**LONE MOUNTAIN CONDOMINIUMS**

FOR:  
**EXHIBIT "A"  
CERTIFICATE OF AMENDMENT**

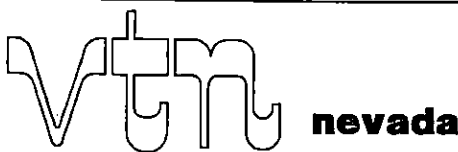
SCALE	HORZ. 1" = 20'
	VERT.
W.O. NO.	5829
DRAWN BY:	TJ
DATE:	04/10/02
SHEET 2 OF 8	

# BIANCA AURORA AVENUE



**LONE MOUNTAIN CONDOMINIUMS  
BOOK 104 OF PLATS, AT PAGE 19**

G:\5829\5829SRVY.DWG (BR-CFA01)

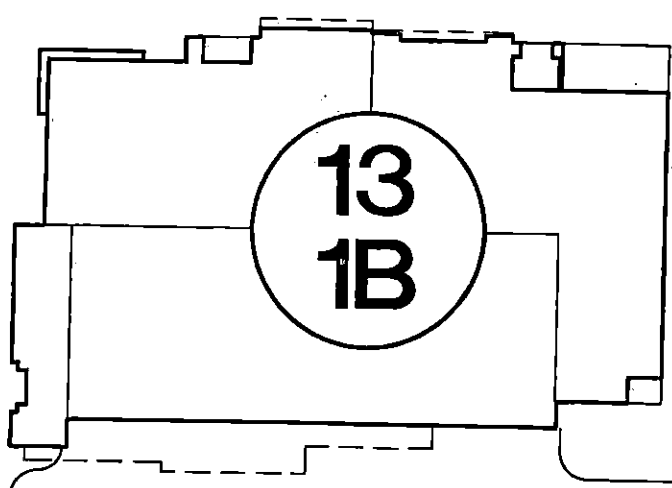


2727 S. RAINBOW BOULEVARD  
LAS VEGAS, NEVADA 89146-5148

PROJECT:  
**LONE MOUNTAIN CONDOMINIUMS**

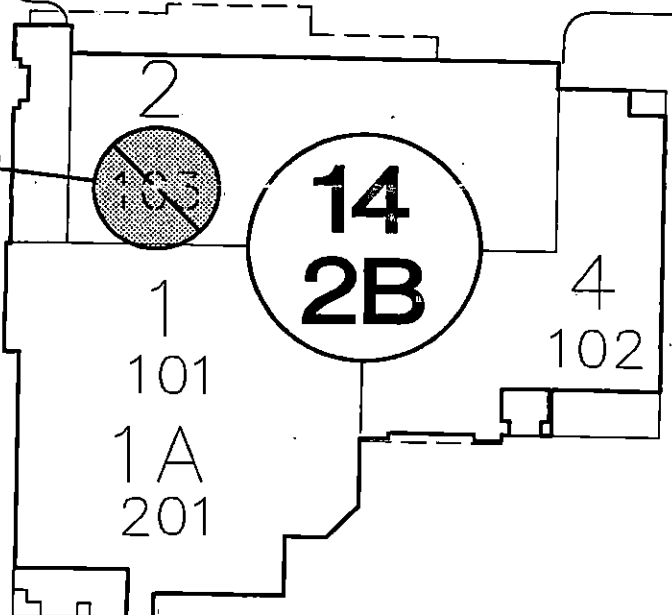
FOR:  
**EXHIBIT "B"  
CERTIFICATE OF AMENDMENT**

SCALE	HORZ. 1"= 20'
	VERT.
W.O. NO.	5829
DRAWN BY:	TJ
DATE:	04/10/02
SHEET	3 OF 8



**SOFT KASHMIR AVENUE**

**STREET**



**PALM BEACH**

**LONE MOUNTAIN CONDOMINIUMS  
BOOK 104 OF PLATS, AT PAGE 19**

G:\5829\5829SRVY.DWG (BR-CFA01)

**VTM nevada**  
 2727 S. RAINBOW BOULEVARD  
 LAS VEGAS, NEVADA 89146-5148

PROJECT:  
**LONE MOUNTAIN CONDOMINIUMS**

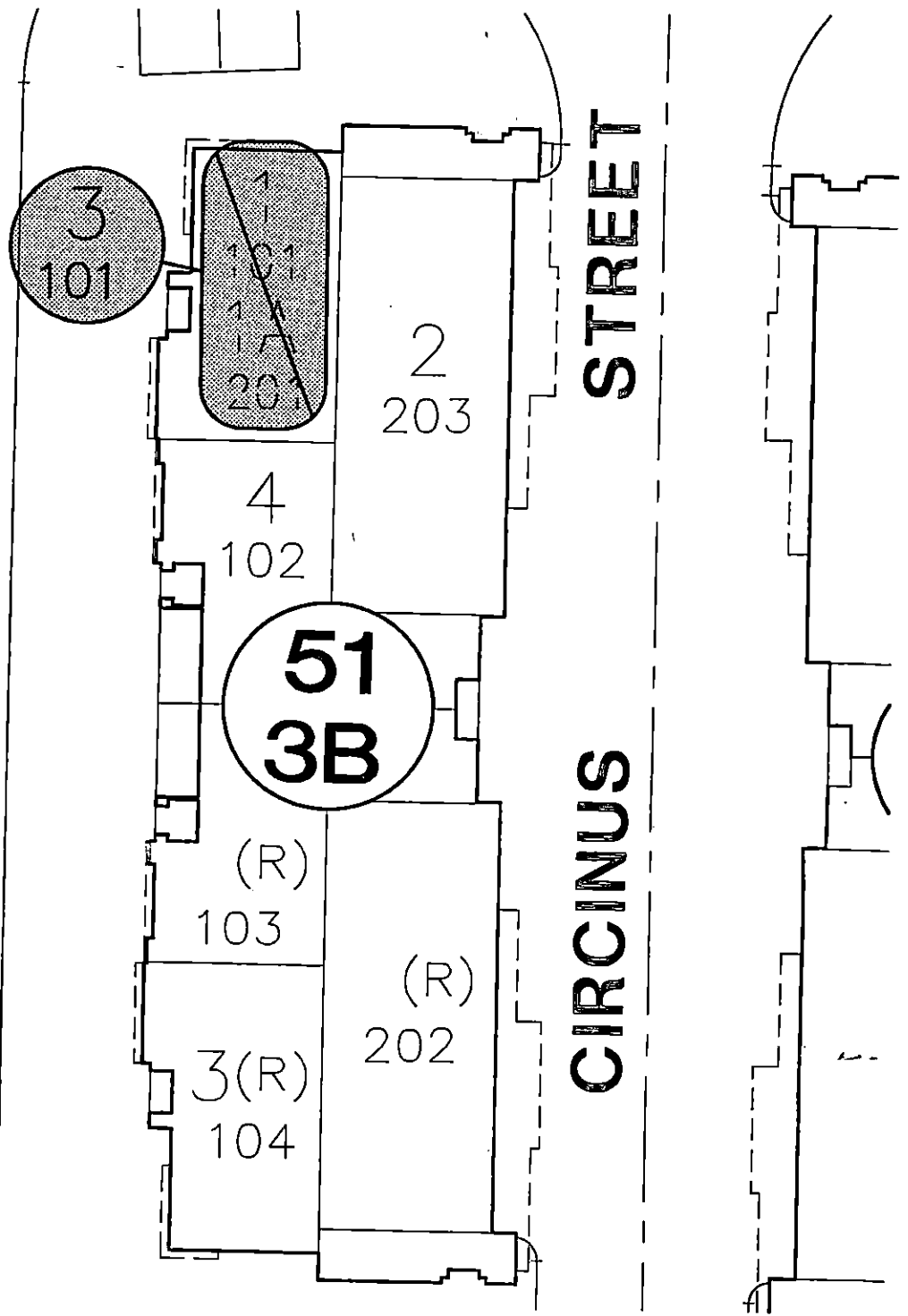
FOR:  
**EXHIBIT "C"  
 CERTIFICATE OF AMENDMENT**

SCALE	HORIZ. 1" = 20'
	VERT.
W.O. NO.	5829
DRAWN BY:	TJ
DATE:	04/10/02
SHEET	4 OF 8



**SARASOTA STREET**

**CIRCINUS STREET**



**LONE MOUNTAIN CONDOMINIUMS  
BOOK 104 OF PLATS, AT PAGE 19**

G:\5829\5829SRVY.DWG (BR-CFA01)

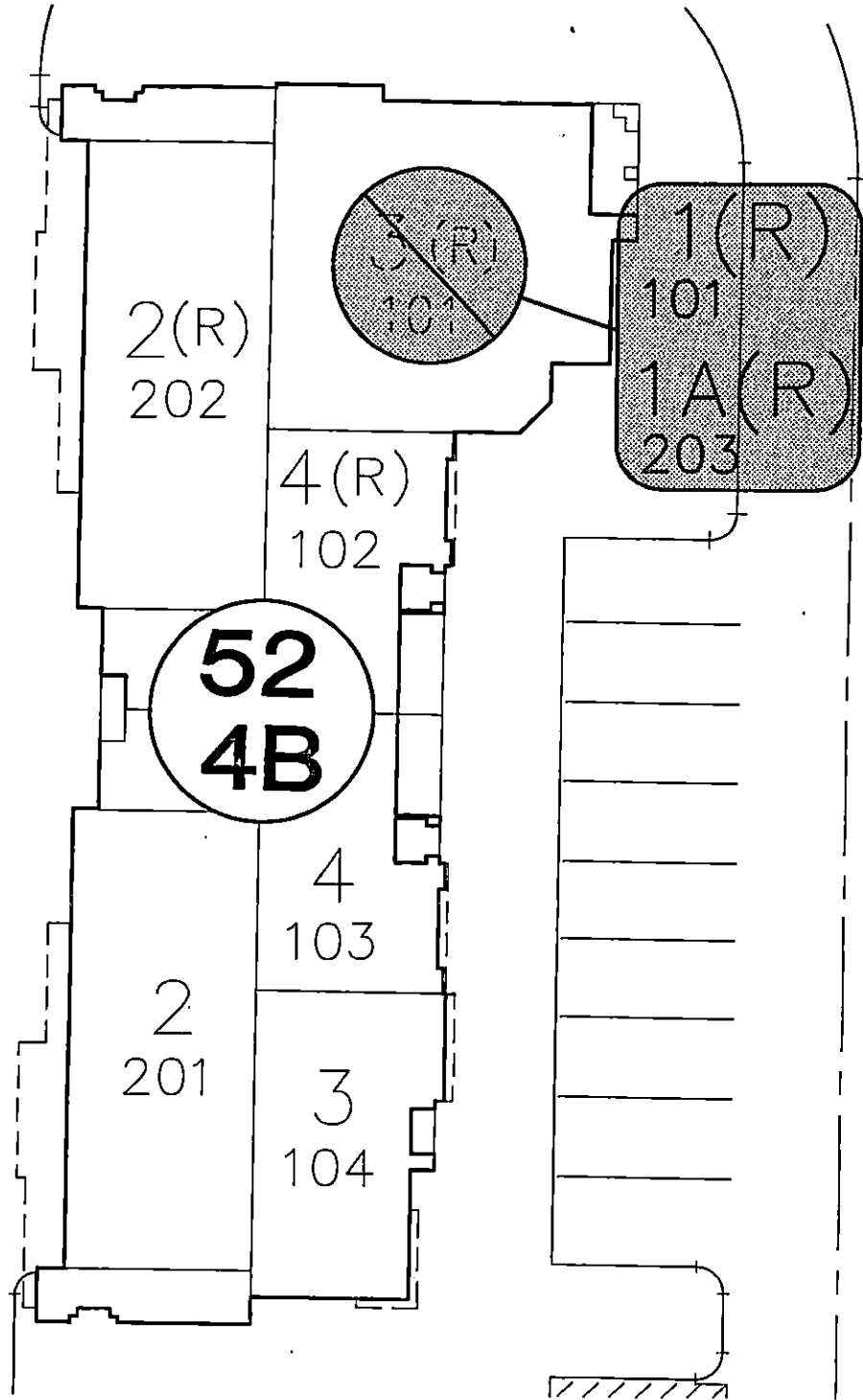
**VTM nevada**  
2727 S. RAINBOW BOULEVARD  
LAS VEGAS, NEVADA 89146-5148

PROJECT:  
**LONE MOUNTAIN CONDOMINIUMS**  
FOR:  
**EXHIBIT "D"  
CERTIFICATE OF AMENDMENT**

SCALE	HORZ. 1" = 20'
	VERT.
W.O. NO.	5829
DRAWN BY:	TJ
DATE:	04/10/02
SHEET <b>5</b> OF <b>8</b>	



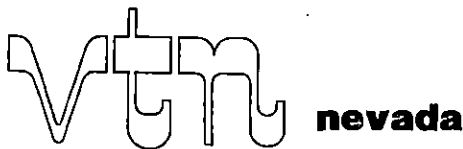
CIRCINUS STREET



WIGGINS BAY STREET

LONE MOUNTAIN CONDOMINIUMS  
BOOK 104 OF PLATS, AT PAGE 19

G:\5829\5829SRVY.DWG (BR-CFA01)

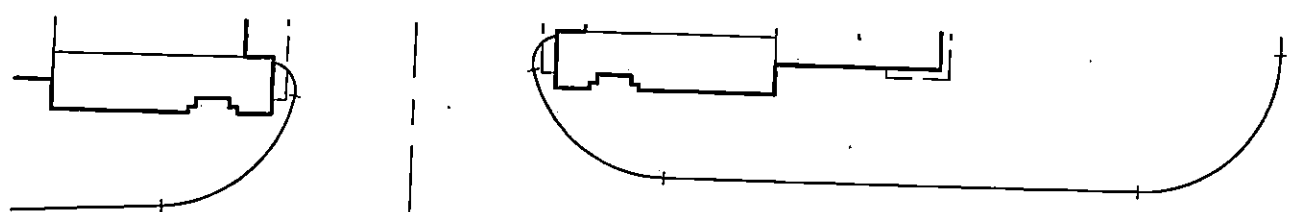


2727 S. RAINBOW BOULEVARD  
LAS VEGAS, NEVADA 89146-5148

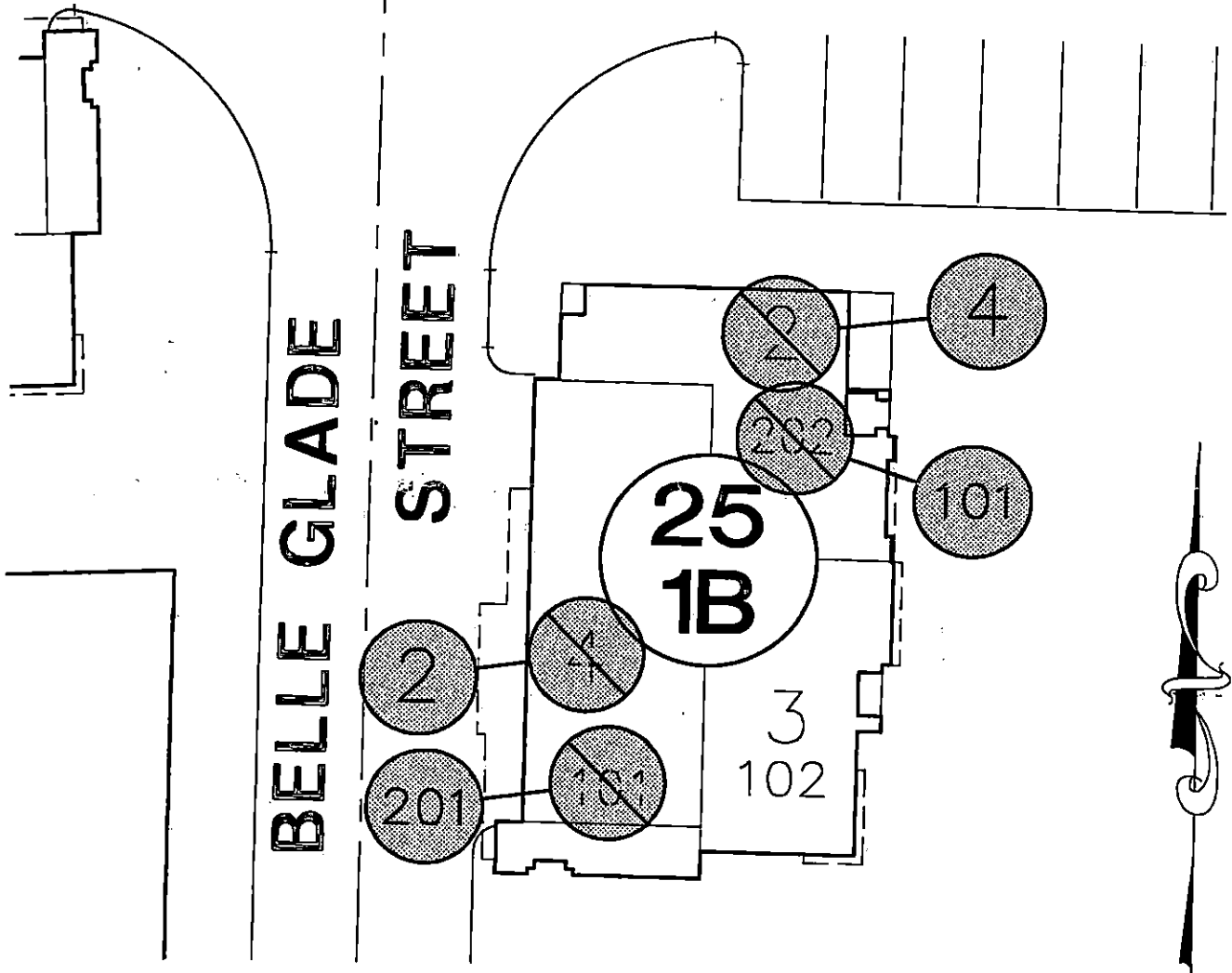
PROJECT:  
LONE MOUNTAIN CONDOMINIUMS

FOR:  
EXHIBIT "E"  
CERTIFICATE OF AMENDMENT

SCALE	HORZ.	1" = 20'
	VERT.	
W.O. NO.	5829	
DRAWN BY:	TJ	
DATE:	04/10/02	
SHEET	6	OF 8



# DELRAY BEACH AVENUE



## LONE MOUNTAIN CONDOMINIUMS BOOK 104 OF PLATS, AT PAGE 19

G: \5829\5829SRVY.DWG (BR-CFA01)

2727 S. RAINBOW BOULEVARD  
LAS VEGAS, NEVADA 89146-5148

PROJECT:  
**LONE MOUNTAIN CONDOMINIUMS**

FOR:  
**EXHIBIT "F"  
CERTIFICATE OF AMENDMENT**

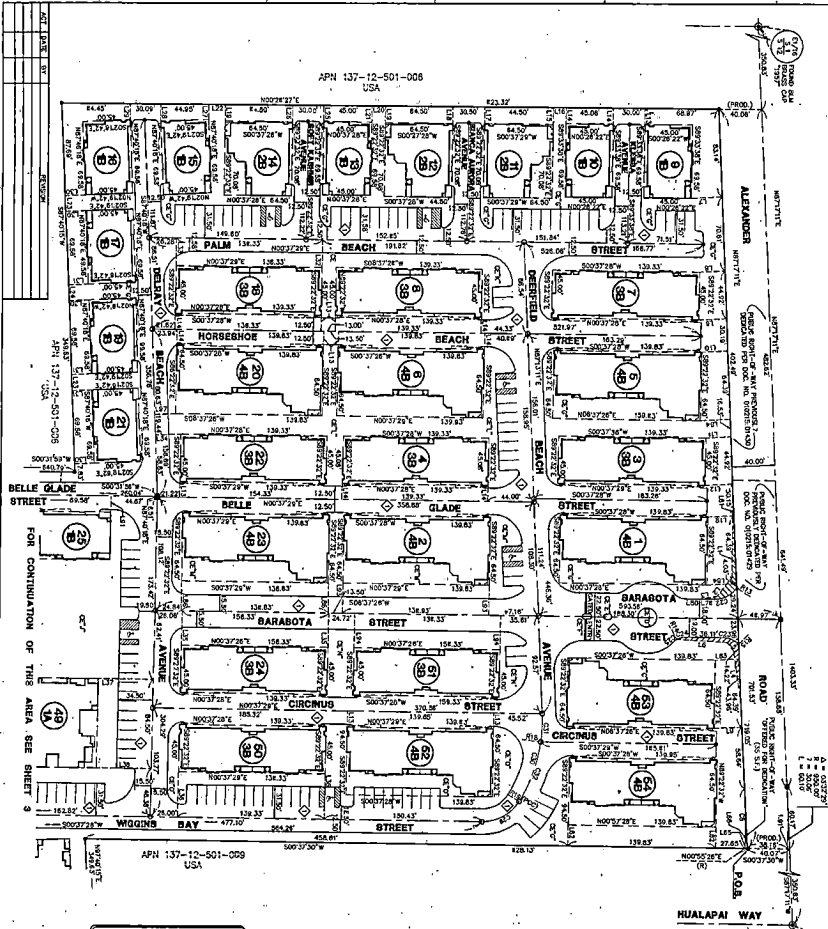
SCALE	HORZ. 1"= 20'
	VERT.
W.O. NO.	5829
DRAWN BY:	TJ
DATE:	04/10/02
SHEET	7 OF 8



# LONE MOUNTAIN CONDOMINIUMS

(A COMMON INTEREST CONDOMINIUM DEVELOPMENT)  
 BEING A SUBDIVISION WITHIN THE NORTH-EAST QUARTER (NE 1/4) OF SECTION 12, TOWNSHIP 20 SOUTH, RANGE 99 EAST, T14M, CITY OF LAS VEGAS CLARK COUNTY, NEVADA

APN 137-12-501-008  
 USA



### LEGEND

	BUILDING NUMBER
	COMMON AREA
	STAIRWAY
	BUILDING FLOOR
	RENDERED/RENDERED BUILDING TYPE
	NUMBER OF FLOORS
	RENDERED/RENDERED BUILDING TYPE
	RENDERED/RENDERED BUILDING TYPE
	RENDERED/RENDERED BUILDING TYPE
	RENDERED/RENDERED BUILDING TYPE
	RENDERED/RENDERED BUILDING TYPE
	RENDERED/RENDERED BUILDING TYPE
	RENDERED/RENDERED BUILDING TYPE
	RENDERED/RENDERED BUILDING TYPE
	RENDERED/RENDERED BUILDING TYPE
	RENDERED/RENDERED BUILDING TYPE
	RENDERED/RENDERED BUILDING TYPE
	RENDERED/RENDERED BUILDING TYPE
	RENDERED/RENDERED BUILDING TYPE
	RENDERED/RENDERED BUILDING TYPE
	RENDERED/RENDERED BUILDING TYPE
	RENDERED/RENDERED BUILDING TYPE
	RENDERED/RENDERED BUILDING TYPE
	RENDERED/RENDERED BUILDING TYPE
	RENDERED/RENDERED BUILDING TYPE
	RENDERED/RENDERED BUILDING TYPE
	RENDERED/RENDERED BUILDING TYPE
	RENDERED/RENDERED BUILDING TYPE
	RENDERED/RENDERED BUILDING TYPE
	RENDERED/RENDERED BUILDING TYPE
	RENDERED/RENDERED BUILDING TYPE
	RENDERED/RENDERED BUILDING TYPE
	RENDERED/RENDERED BUILDING TYPE
	RENDERED/RENDERED BUILDING TYPE
	RENDERED/RENDERED BUILDING TYPE
	RENDERED/RENDERED BUILDING TYPE
	RENDERED/RENDERED BUILDING TYPE
	RENDERED/RENDERED BUILDING TYPE
	RENDERED/RENDERED BUILDING TYPE
	RENDERED/RENDERED BUILDING TYPE
	RENDERED/RENDERED BUILDING TYPE
	RENDERED/RENDERED BUILDING TYPE
	RENDERED/RENDERED BUILDING TYPE
	RENDERED/RENDERED BUILDING TYPE
	RENDERED/RENDERED BUILDING TYPE
	RENDERED/RENDERED BUILDING TYPE
	RENDERED/RENDERED BUILDING TYPE
	RENDERED/RENDERED BUILDING TYPE
	RENDERED/RENDERED BUILDING TYPE
	RENDERED/RENDERED BUILDING TYPE
	RENDERED/RENDERED BUILDING TYPE
	RENDERED/RENDERED BUILDING TYPE
	RENDERED/RENDERED BUILDING TYPE
	RENDERED/RENDERED BUILDING TYPE
	RENDERED/RENDERED BUILDING TYPE
	RENDERED/RENDERED BUILDING TYPE
	RENDERED/RENDERED BUILDING TYPE
	RENDERED/RENDERED BUILDING TYPE
	RENDERED/RENDERED BUILDING TYPE
	RENDERED/RENDERED BUILDING TYPE
	RENDERED/RENDERED BUILDING TYPE
	RENDERED/RENDERED BUILDING TYPE
	RENDERED/RENDERED BUILDING TYPE
	RENDERED/RENDERED BUILDING TYPE
	RENDERED/RENDERED BUILDING TYPE
	RENDERED/RENDERED BUILDING TYPE
	RENDERED/RENDERED BUILDING TYPE
	RENDERED/RENDERED BUILDING TYPE
	RENDERED/RENDERED BUILDING TYPE
	RENDERED/RENDERED BUILDING TYPE
	RENDERED/RENDERED BUILDING TYPE
	RENDERED/RENDERED BUILDING TYPE
	RENDERED/RENDERED BUILDING TYPE
	RENDERED/RENDERED BUILDING TYPE
	RENDERED/RENDERED BUILDING TYPE
	RENDERED/RENDERED BUILDING TYPE
	RENDERED/RENDERED BUILDING TYPE
	RENDERED/RENDERED BUILDING TYPE
	RENDERED/RENDERED BUILDING TYPE
	RENDERED/RENDERED BUILDING TYPE
	RENDERED/RENDERED BUILDING TYPE

### NOTE

1. THIS PLAN, SPECIFICATIONS, TERMS, CONDITIONS, AND ANY OTHER DOCUMENTS RELATING TO THIS DEVELOPMENT SHALL BE READ AND UNDERSTOOD BY ALL PARTIES TO THIS DEVELOPMENT. THE BUYER SHALL BE RESPONSIBLE FOR OBTAINING ALL NECESSARY PERMITS AND APPROVALS FROM THE APPROPRIATE AGENCIES AND AUTHORITIES. THE BUYER SHALL BE RESPONSIBLE FOR OBTAINING ALL NECESSARY PERMITS AND APPROVALS FROM THE APPROPRIATE AGENCIES AND AUTHORITIES.
2. THE BUYER SHALL BE RESPONSIBLE FOR OBTAINING ALL NECESSARY PERMITS AND APPROVALS FROM THE APPROPRIATE AGENCIES AND AUTHORITIES. THE BUYER SHALL BE RESPONSIBLE FOR OBTAINING ALL NECESSARY PERMITS AND APPROVALS FROM THE APPROPRIATE AGENCIES AND AUTHORITIES.
3. THE BUYER SHALL BE RESPONSIBLE FOR OBTAINING ALL NECESSARY PERMITS AND APPROVALS FROM THE APPROPRIATE AGENCIES AND AUTHORITIES. THE BUYER SHALL BE RESPONSIBLE FOR OBTAINING ALL NECESSARY PERMITS AND APPROVALS FROM THE APPROPRIATE AGENCIES AND AUTHORITIES.
4. THE BUYER SHALL BE RESPONSIBLE FOR OBTAINING ALL NECESSARY PERMITS AND APPROVALS FROM THE APPROPRIATE AGENCIES AND AUTHORITIES. THE BUYER SHALL BE RESPONSIBLE FOR OBTAINING ALL NECESSARY PERMITS AND APPROVALS FROM THE APPROPRIATE AGENCIES AND AUTHORITIES.
5. THE BUYER SHALL BE RESPONSIBLE FOR OBTAINING ALL NECESSARY PERMITS AND APPROVALS FROM THE APPROPRIATE AGENCIES AND AUTHORITIES. THE BUYER SHALL BE RESPONSIBLE FOR OBTAINING ALL NECESSARY PERMITS AND APPROVALS FROM THE APPROPRIATE AGENCIES AND AUTHORITIES.

NO. 22 OF 19  
 SHEET 17

file copy