

CHEYENNE/HUALAPAI UNIT 4A

Recorded in Book 87 Page 87 of Plats

200 Scale Map Location: K-12-8

Fire Dept. District Map # 1914:89,99

MASTER SITE ADDRESS: 10130 W. CHEYENNE AVE

BLOCK 4	LOT	4	3316	LACEBARK PINE ST	N/S	PRIVATE STREET
		5	3312			
		6	3308			
		7	3304			
		8	3300			
BLOCK 4	LOT	9	10101	FRENCH PINE AVE	E/W	PRIVATE STREET
		10	10105			
		11	10109			
		12	10113			
		13	10117			
		14	10121			
BLOCK 4	LOT	15	3232	BISHOP PINE ST	N/S	PRIVATE STREET
		16	3228			
		17	3224			
		18	3220			
		19	3216			
		20	3212			
		21	3208			
		22	3204			
		23	3200			
		24	3201			
		25	3205			
		26	3209			
		27	3213			
		28	3217			
BLOCK 5	LOT	1	3225	BISHOP PINE ST	N/S	PRIVATE STREET
		2	3229			
		3	3233			
		4	3237			
		5	3241			
		6	3245			
BLOCK 5	LOT	7	10128	FRENCH PINE AVE	E/W	PRIVATE STREET
		8	10124			
		9	10120			
		10	10116			
		11	10112			
		12	10108			
BLOCK 5	LOT	13	10105	FOXTAIL PINE AVE	E/W	PRIVATE STREET
		14	10109			
		15	10113			
		16	10117			
		17	10121			
		18	10125			
BLOCK 5	LOT	19	3317	WHITE BARK PINE ST	N/S	PRIVATE STREET

CHEYENNE/HUALAPAI UNIT 4A

BLOCK 5	LOT	20	3321	WHITE BARK PINE ST	N/S	PRIVATE STREET
		21	3325			
		22	3329			
		23	3401			
		24	3405			
		25	3409			
		26	3413			
		27	3417			
		28	3421			
		29	3425			
BLOCK 6	LOT	12	3317	LACEBARK PINE ST	N/S	PRIVATE STREET
BLOCK 6	LOT	13	3316	WHITE BARK PINE ST	N/S	PRIVATE STREET
		14	3320			
		15	3324			
		16	3328			
		17	3400			
		18	3404			
		19	3408			
		20	3412			
		21	3416			
		22	3420			
		23	3424			
Common Area		4A	3410	SPRING SHADOW RD	N/S	PUBLIC STREET
Common Area		4B	3331	WHITE BARK PINE ST	N/S	PRIVATE STREET
		4C	3330			
Common Area		4D	3310	SPRING SHADOW RD	N/S	PUBLIC STREET
Common Area		4E	3311	HUALAPAI WAY	N/S	PUBLIC STREET
Common Area		4F	10123	SUGARVIEW AVE	EW	PRIVATE STREET

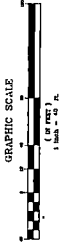
ORIGINAL DATE: 1/14/1999

CITY OF LAS VEGAS
PLANNING & DEVELOPMENT DEPARTMENT


JOHN B HERBERT, PLANNER I

CHEYENNE / HUALAPAI UNIT 4A

(A COMALON INTEREST COMMUNITY)
 LOCATED IN THE SOUTHEAST QUARTER (SE 1/4) OF SECTION 12,
 TOWNSHIP 20 SOUTH, RANGE 86 EAST, M.D.M., CITY OF LAS VEGAS, CLARK COUNTY, NEVADA.



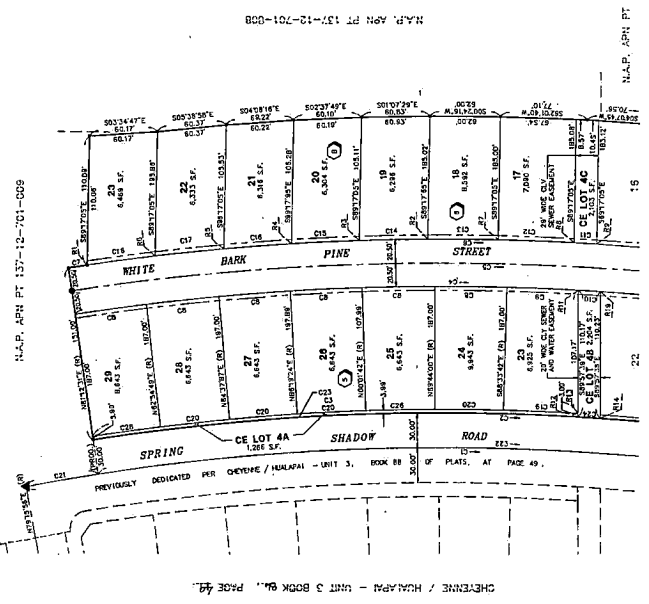
LEGEND

- METERS LINE
- 15' WIDE AUTODRIVE ACCESS COMMON ELEMENT
- LOT LINE - 4-WAY LINE
- EASEMENT LINE
- PROPERTY LINE
- TYPE IS MONUMENT AL CAP "VIN PLS 11448"
- SET NAL & GRADE PLS "VIN PLS 11448"
- SET NAL & GRADE PLS "VIN PLS 11448"
- PROPORTION OF PROPERTY LINES
- SET PLS D. MONUMENT
- AL CAP "VIN PLS 11448"
- POINT ADJACENT AS DESCRIBED
- LOT CORNER ELEVATION LOTS 1 - 15
- LOT CORNER ELEVATION LOTS 16 - 18
- TOTAL LOTS = 74
- CURVE NUMBER
- BEARING
- RADIAL LINE NUMBER
- BLOCK NUMBER
- POINT OF BEGINNING
- PROPOSED LINE
- EXISTING LINE
- PUBLIC UTILITY EASEMENT
- COMMON EASEMENT
- C.C. (COMMON ELEMENT)
- N.E.P. (NEIGHBORHOOD ELEMENT PLAN)
- NOT A PART
- ADDRESS'S PARCEL NUMBER
- APN

NOTES:

- ALL REAL LOT CORNERS SHALL BE SET WITH A NAIL AND BRASS THE PLS 11448 ON BLOCK WALL AND ALL POINTS OF THE LOT CORNER SHALL BE SET WITH A NAIL AND BRASS THE PLS 11448 ON THE BLOCK OF CURBS ON THE PERIPHERY OF THE PROPERTY LINES.
- COMMON EASEMENT AND UTILITY CORNER TO APPROXIMATE ROAD THROUGH CENTER OF ROAD.
- SEE SHEET 3 FOR CURVE, CORNER AND RADIAL LINE TABLE.
- ALL FOLLOWING INTERIOR STREETS ARE PRIVATE DRIVE, PUBLIC USAGE PERMITTED. TO BE MAINTAINED BY THE H.O.A., P.U.C. AND C.L.V. CREW.

WHITE BARK PINE STREET



SEE SHEET 3 FOR CONTINUATION

FILE NAME	BY	DATE	REVISION
137-12-701-008
137-12-701-009
137-12-701-010
137-12-701-011

W.O. 5016-SF-4
 SHEET 2 OF 5
 FILE COPY - Please Return Book 87-7687

