

DORRELL/HUALAPAI WEST

Recorded in Book 148 Page 027 of Plats

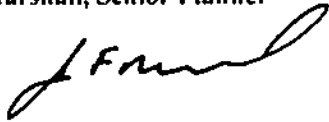
MASTER SITE ADDRESS: 10069 W DORRELL LN

Fire Department District Map Number: /

01515-31

| <u>Block</u> | <u>Lot</u> | <u>Address</u> |
|--------------|------------|-----------------------|
| 1 | 1 | 6985 LAKOTA SUMMIT CT |
| | 2 | 6975 |
| | 3 | 6965 |
| | 4 | 6955 |
| | 5 | 6945 |
| | 6 | 6935 |
| | 7 | 6925 |
| | 8 | 6915 |
| | 9 | 6905 |
| | 10 | 6902 |
| | 11 | 6912 |
| | 12 | 6922 |
| | 13 | 6932 |
| | 14 | 6942 |
| | 15 | 6952 |
| | 16 | 6962 |
| | 17 | 6972 |
| | 18 | 6982 |

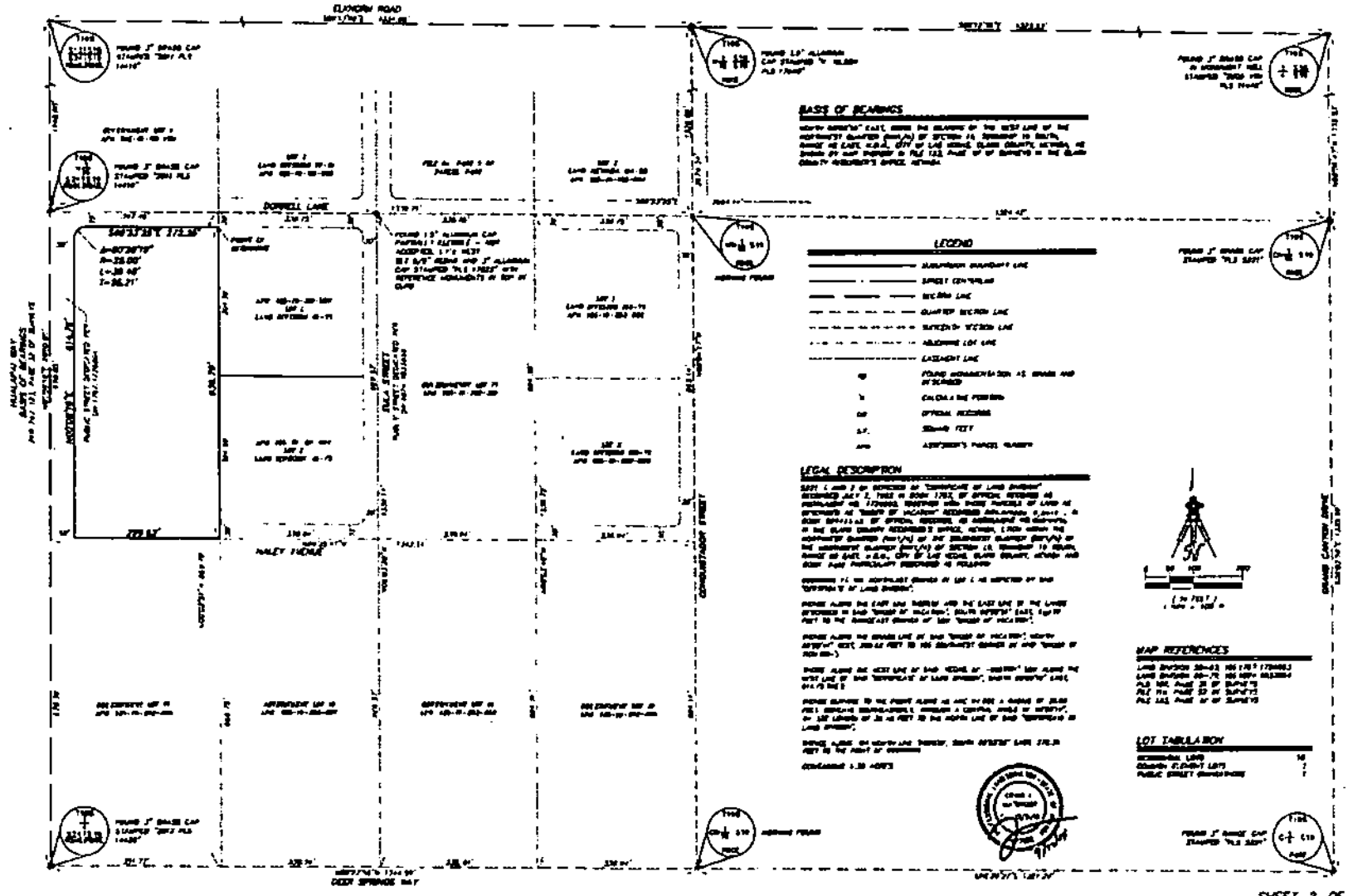
Jim Marshall, Senior Planner



FINAL MAP OF DORRELL/HUALAPAI WEST

A COMMON INTEREST COMMUNITY

BEING THE MERGER AND RESUBDIVISION OF LOTS 1 AND 2 AS DEPICTED BY "CERTIFICATE OF LAND DIVISION" RECORDED JULY 7, 1983 IN BOOK 1767, OF OFFICIAL RECORDS AS INSTRUMENT NO. 1726893, TOGETHER WITH THOSE PARCELS OF LAND AS DESCRIBED BY "ORDER OF VACATION" RECORDED DECEMBER 8, 2019, IN BOOK 20141109, OF OFFICIAL RECORDS, AS INSTRUMENT NO. 0009996, IN THE CLARK COUNTY RECORDER'S OFFICE, NEVADA, LYING WITHIN THE NORTHWEST QUARTER (NW1/4) OF THE SOUTHWEST QUARTER (SW1/4) OF THE NORTHWEST QUARTER (NW1/4) OF SECTION 19, TOWNSHIP 19 SOUTH, RANGE 60 EAST, M.O.M., CITY OF LAS VEGAS, CLARK COUNTY, NEVADA



BASE OF BEARINGS
 NORTH-SOUTH EAST, BEING THE BEARING OF THE WEST LINE OF THE NORTHWEST QUARTER (NW1/4) OF SECTION 19, TOWNSHIP 19 SOUTH, RANGE 60 EAST, M.O.M., CITY OF LAS VEGAS, CLARK COUNTY, NEVADA, AS SHOWN BY SAID INSTRUMENT IN FILE 122, PAGE 17 OF INSTRUMENTS IN THE CLARK COUNTY RECORDER'S OFFICE, NEVADA.

LEGEND

| | |
|--|---|
| | ADJACENT JURISDICTION LINE |
| | ALLEY CENTERLINE |
| | SECTION LINE |
| | QUARTER SECTION LINE |
| | SECTION-WISE LINE |
| | ADJACENT LOT LINE |
| | EASEMENT LINE |
| | POINT INFORMATION AS SHOWN AND REFERRED |
| | CALCULATED POINTS |
| | OFFICIAL RECORDS |
| | SHOW FEET |
| | ADJACENT'S PARCEL NUMBER |

LEGAL DESCRIPTION
 SAID LOT 1 AND 2 AS DESCRIBED BY "CERTIFICATE OF LAND DIVISION" RECORDED JULY 7, 1983 IN BOOK 1767, OF OFFICIAL RECORDS AS INSTRUMENT NO. 1726893, TOGETHER WITH THOSE PARCELS OF LAND AS DESCRIBED BY "ORDER OF VACATION" RECORDED DECEMBER 8, 2019, IN BOOK 20141109, OF OFFICIAL RECORDS, AS INSTRUMENT NO. 0009996, IN THE CLARK COUNTY RECORDER'S OFFICE, NEVADA, (THIS BEING THE NORTHWEST QUARTER (NW1/4) OF THE SOUTHWEST QUARTER (SW1/4) OF THE NORTHWEST QUARTER (NW1/4) OF SECTION 19, TOWNSHIP 19 SOUTH, RANGE 60 EAST, M.O.M., CITY OF LAS VEGAS, CLARK COUNTY, NEVADA) AND SAID PUBLIC STREET DESCRIBED AS FOLLOWS:
 BEARING 14 DEGREES 00' 00" EAST OF THE NORTH LINE OF THE NORTHWEST QUARTER (NW1/4) OF SECTION 19, TOWNSHIP 19 SOUTH, RANGE 60 EAST, M.O.M., CITY OF LAS VEGAS, CLARK COUNTY, NEVADA, AS SHOWN BY SAID INSTRUMENT IN FILE 122, PAGE 17 OF INSTRUMENTS IN THE CLARK COUNTY RECORDER'S OFFICE, NEVADA.
 POINTS ALONG THE EAST AND WESTERLY AND THE EAST LINE OF THE LINES REFERRED TO IN SAID "ORDER OF VACATION" SHALL BE REFERRED TO THE NEAREST CORNER OF SAID "ORDER OF VACATION".
 POINTS ALONG THE SOUTH LINE OF SAID "ORDER OF VACATION" SHALL BE REFERRED TO THE NEAREST CORNER OF SAID "ORDER OF VACATION".
 POINTS ALONG THE WEST LINE OF SAID "ORDER OF VACATION" SHALL BE REFERRED TO THE NEAREST CORNER OF SAID "ORDER OF VACATION".
 POINTS ALONG THE NORTH LINE OF SAID "ORDER OF VACATION" SHALL BE REFERRED TO THE NEAREST CORNER OF SAID "ORDER OF VACATION".
 POINTS ALONG THE EAST LINE OF SAID "ORDER OF VACATION" SHALL BE REFERRED TO THE NEAREST CORNER OF SAID "ORDER OF VACATION".
 POINTS ALONG THE WEST LINE OF SAID "ORDER OF VACATION" SHALL BE REFERRED TO THE NEAREST CORNER OF SAID "ORDER OF VACATION".
 POINTS ALONG THE SOUTH LINE OF SAID "ORDER OF VACATION" SHALL BE REFERRED TO THE NEAREST CORNER OF SAID "ORDER OF VACATION".
 POINTS ALONG THE NORTH LINE OF SAID "ORDER OF VACATION" SHALL BE REFERRED TO THE NEAREST CORNER OF SAID "ORDER OF VACATION".



MAP REFERENCES
 LAND DIVISION 20-02-100 (17) (2000)
 LAND DIVISION 20-02-100 (18) (2000)
 FILE NO. PAGE 17 OF INSTRUMENTS
 FILE NO. PAGE 17 OF INSTRUMENTS

LOT TABLE
 SECTIONAL LOT 14
 QUARTER SECTION 14
 PUBLIC STREET 14



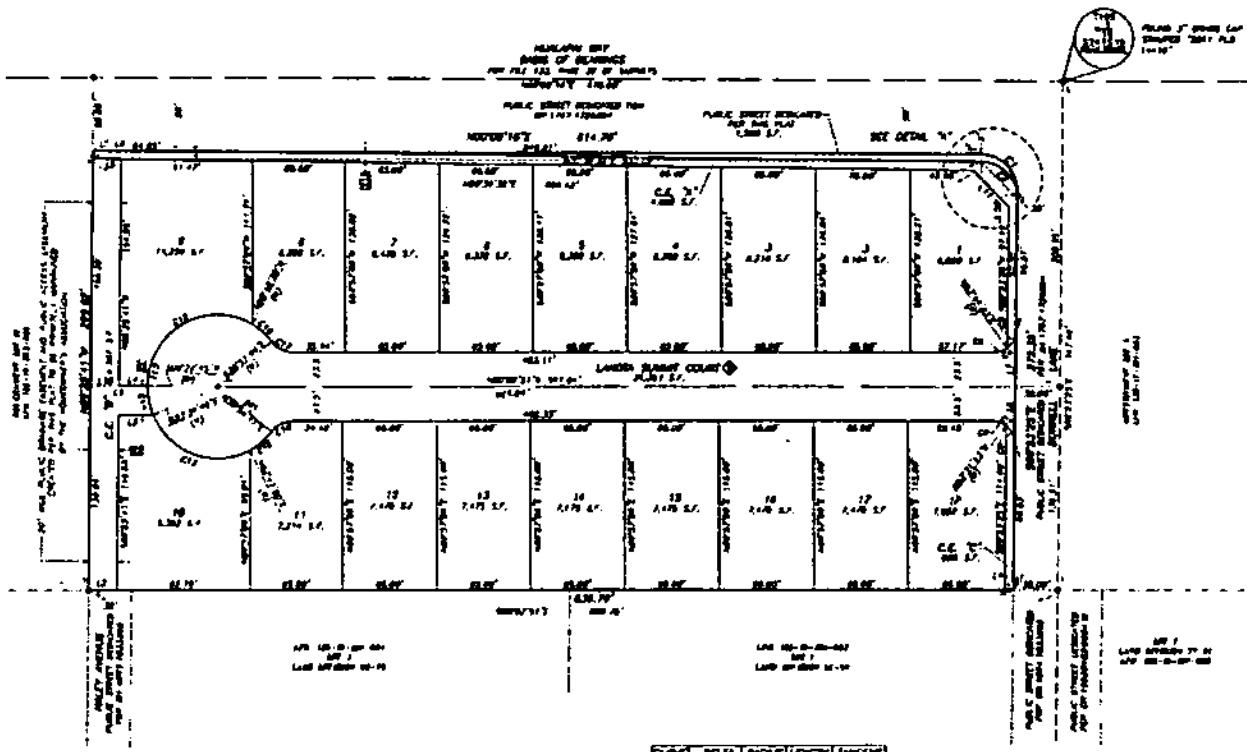
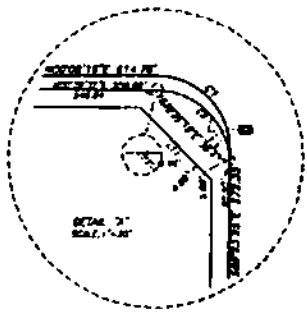
FINAL MAP OF DORRELL/HUALAPAI WEST

A COMMON INTEREST COMMUNITY

BEING THE MERGER AND RESUBDIVISION OF LDTS 1 AND 2 AS DEPICTED BY "CERTIFICATE OF LAND DIVISION" RECORDED JULY 7, 1983 IN BOOK 1787, OF OFFICIAL RECORDS AS INSTRUMENT NO. 1726893, TOGETHER WITH THOSE PARCELS OF LAND AS DESCRIBED BY "ORDER OF VACATION" RECORDED DECEMBER 8, 2014, IN BOOK 2D141163, OF OFFICIAL RECORDS, AS INSTRUMENT NO. 0004494 IN THE CLARK COUNTY RECORDER'S OFFICE, NEVADA, LYING WITHIN THE NORTHWEST QUARTER (NW1/4) OF THE SOUTHWEST QUARTER (SW1/4) OF THE NORTHWEST QUARTER (NW1/4) OF SECTION 19, TOWNSHIP 19 SOUTH, RANGE 60 EAST, M.D.M., CITY OF LAS VEGAS, CLARK COUNTY, NEVADA

- LEGEND**
- SUBDIVISION BOUNDARY LINE
 - STREET CORNERLINE
 - MESH LINE
 - QUARTER SECTION LINE
 - SECTION SECTION LINE
 - SURVEY LINE
 - LOT LINE
 - ALIENATION OF LOT

- 1 LOT NUMBER
- 20 OFFICIAL RECORDS
- 25 ACCESSORY PARCEL NUMBER
- 29 ROAD LINE
- C.E. "N" COMMON ELEMENT RESERVATION
- 31 THE LAST RESIDENT
- 32 COMMON ELEM. RESERVATION
- 33 COMMON ELEM. RESERVATION
- 34 PUBLIC STREET BEHIND FOR THE PLAT (21,287 S1)
- 35 1/4" OF THE SECTION RESERVATION AND 1/4" OF THE QUARTER SECTION RESERVATION FOR THE PLAT (21,287 S1)
- 36 1/4" OF THE PUBLIC STREET CORNERLINE, PUBLIC STREET BEHIND AND PUBLIC ACCESS EASEMENT FOR THE PLAT TO BE PROVIDED HEREON BY THE HOUSING DEVELOPER
- 37 PUBLIC STREET CORNERLINE FOR THE PLAT (21,287 S1)
- 38 PUBLIC STREET BEHIND FOR THE PLAT (21,287 S1)
- 39 PUBLIC STREET BEHIND FOR THE PLAT (21,287 S1)
- 40 PUBLIC STREET BEHIND FOR THE PLAT (21,287 S1)
- 41 PUBLIC STREET BEHIND FOR THE PLAT (21,287 S1)
- 42 PUBLIC STREET BEHIND FOR THE PLAT (21,287 S1)
- 43 PUBLIC STREET BEHIND FOR THE PLAT (21,287 S1)
- 44 PUBLIC STREET BEHIND FOR THE PLAT (21,287 S1)
- 45 PUBLIC STREET BEHIND FOR THE PLAT (21,287 S1)
- 46 PUBLIC STREET BEHIND FOR THE PLAT (21,287 S1)
- 47 PUBLIC STREET BEHIND FOR THE PLAT (21,287 S1)
- 48 PUBLIC STREET BEHIND FOR THE PLAT (21,287 S1)
- 49 PUBLIC STREET BEHIND FOR THE PLAT (21,287 S1)
- 50 PUBLIC STREET BEHIND FOR THE PLAT (21,287 S1)
- 51 PUBLIC STREET BEHIND FOR THE PLAT (21,287 S1)
- 52 PUBLIC STREET BEHIND FOR THE PLAT (21,287 S1)
- 53 PUBLIC STREET BEHIND FOR THE PLAT (21,287 S1)
- 54 PUBLIC STREET BEHIND FOR THE PLAT (21,287 S1)
- 55 PUBLIC STREET BEHIND FOR THE PLAT (21,287 S1)
- 56 PUBLIC STREET BEHIND FOR THE PLAT (21,287 S1)
- 57 PUBLIC STREET BEHIND FOR THE PLAT (21,287 S1)
- 58 PUBLIC STREET BEHIND FOR THE PLAT (21,287 S1)
- 59 PUBLIC STREET BEHIND FOR THE PLAT (21,287 S1)
- 60 PUBLIC STREET BEHIND FOR THE PLAT (21,287 S1)
- 61 PUBLIC STREET BEHIND FOR THE PLAT (21,287 S1)
- 62 PUBLIC STREET BEHIND FOR THE PLAT (21,287 S1)
- 63 PUBLIC STREET BEHIND FOR THE PLAT (21,287 S1)
- 64 PUBLIC STREET BEHIND FOR THE PLAT (21,287 S1)
- 65 PUBLIC STREET BEHIND FOR THE PLAT (21,287 S1)
- 66 PUBLIC STREET BEHIND FOR THE PLAT (21,287 S1)
- 67 PUBLIC STREET BEHIND FOR THE PLAT (21,287 S1)
- 68 PUBLIC STREET BEHIND FOR THE PLAT (21,287 S1)
- 69 PUBLIC STREET BEHIND FOR THE PLAT (21,287 S1)
- 70 PUBLIC STREET BEHIND FOR THE PLAT (21,287 S1)
- 71 PUBLIC STREET BEHIND FOR THE PLAT (21,287 S1)
- 72 PUBLIC STREET BEHIND FOR THE PLAT (21,287 S1)
- 73 PUBLIC STREET BEHIND FOR THE PLAT (21,287 S1)
- 74 PUBLIC STREET BEHIND FOR THE PLAT (21,287 S1)
- 75 PUBLIC STREET BEHIND FOR THE PLAT (21,287 S1)
- 76 PUBLIC STREET BEHIND FOR THE PLAT (21,287 S1)
- 77 PUBLIC STREET BEHIND FOR THE PLAT (21,287 S1)
- 78 PUBLIC STREET BEHIND FOR THE PLAT (21,287 S1)
- 79 PUBLIC STREET BEHIND FOR THE PLAT (21,287 S1)
- 80 PUBLIC STREET BEHIND FOR THE PLAT (21,287 S1)
- 81 PUBLIC STREET BEHIND FOR THE PLAT (21,287 S1)
- 82 PUBLIC STREET BEHIND FOR THE PLAT (21,287 S1)
- 83 PUBLIC STREET BEHIND FOR THE PLAT (21,287 S1)
- 84 PUBLIC STREET BEHIND FOR THE PLAT (21,287 S1)
- 85 PUBLIC STREET BEHIND FOR THE PLAT (21,287 S1)
- 86 PUBLIC STREET BEHIND FOR THE PLAT (21,287 S1)
- 87 PUBLIC STREET BEHIND FOR THE PLAT (21,287 S1)
- 88 PUBLIC STREET BEHIND FOR THE PLAT (21,287 S1)
- 89 PUBLIC STREET BEHIND FOR THE PLAT (21,287 S1)
- 90 PUBLIC STREET BEHIND FOR THE PLAT (21,287 S1)
- 91 PUBLIC STREET BEHIND FOR THE PLAT (21,287 S1)
- 92 PUBLIC STREET BEHIND FOR THE PLAT (21,287 S1)
- 93 PUBLIC STREET BEHIND FOR THE PLAT (21,287 S1)
- 94 PUBLIC STREET BEHIND FOR THE PLAT (21,287 S1)
- 95 PUBLIC STREET BEHIND FOR THE PLAT (21,287 S1)
- 96 PUBLIC STREET BEHIND FOR THE PLAT (21,287 S1)
- 97 PUBLIC STREET BEHIND FOR THE PLAT (21,287 S1)
- 98 PUBLIC STREET BEHIND FOR THE PLAT (21,287 S1)
- 99 PUBLIC STREET BEHIND FOR THE PLAT (21,287 S1)
- 100 PUBLIC STREET BEHIND FOR THE PLAT (21,287 S1)

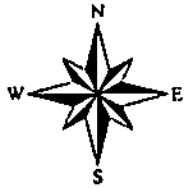


NOTE
ALL COMMON INTEREST AND UTILITY EASEMENTS SHOWN HEREON AS "COMMON ELEMENTS" ("C.E.") OR "UTILITY EASEMENTS" ARE TO BE PROVIDED HEREON BY THE HOUSING DEVELOPER.

| Lot No. | Area (sq. ft.) | Dimensions |
|---------|----------------|------------|
| 1 | 1,400 | 35' x 40' |
| 2 | 1,400 | 35' x 40' |
| 3 | 1,400 | 35' x 40' |
| 4 | 1,400 | 35' x 40' |
| 5 | 1,400 | 35' x 40' |
| 6 | 1,400 | 35' x 40' |
| 7 | 1,400 | 35' x 40' |
| 8 | 1,400 | 35' x 40' |
| 9 | 1,400 | 35' x 40' |
| 10 | 1,400 | 35' x 40' |
| 11 | 1,400 | 35' x 40' |
| 12 | 1,400 | 35' x 40' |
| 13 | 1,400 | 35' x 40' |
| 14 | 1,400 | 35' x 40' |
| 15 | 1,400 | 35' x 40' |
| 16 | 1,400 | 35' x 40' |
| 17 | 1,400 | 35' x 40' |
| 18 | 1,400 | 35' x 40' |
| 19 | 1,400 | 35' x 40' |
| 20 | 1,400 | 35' x 40' |
| 21 | 1,400 | 35' x 40' |
| 22 | 1,400 | 35' x 40' |
| 23 | 1,400 | 35' x 40' |
| 24 | 1,400 | 35' x 40' |
| 25 | 1,400 | 35' x 40' |
| 26 | 1,400 | 35' x 40' |
| 27 | 1,400 | 35' x 40' |
| 28 | 1,400 | 35' x 40' |
| 29 | 1,400 | 35' x 40' |
| 30 | 1,400 | 35' x 40' |
| 31 | 1,400 | 35' x 40' |
| 32 | 1,400 | 35' x 40' |
| 33 | 1,400 | 35' x 40' |
| 34 | 1,400 | 35' x 40' |
| 35 | 1,400 | 35' x 40' |
| 36 | 1,400 | 35' x 40' |
| 37 | 1,400 | 35' x 40' |
| 38 | 1,400 | 35' x 40' |
| 39 | 1,400 | 35' x 40' |
| 40 | 1,400 | 35' x 40' |
| 41 | 1,400 | 35' x 40' |
| 42 | 1,400 | 35' x 40' |
| 43 | 1,400 | 35' x 40' |
| 44 | 1,400 | 35' x 40' |
| 45 | 1,400 | 35' x 40' |
| 46 | 1,400 | 35' x 40' |
| 47 | 1,400 | 35' x 40' |
| 48 | 1,400 | 35' x 40' |
| 49 | 1,400 | 35' x 40' |
| 50 | 1,400 | 35' x 40' |
| 51 | 1,400 | 35' x 40' |
| 52 | 1,400 | 35' x 40' |
| 53 | 1,400 | 35' x 40' |
| 54 | 1,400 | 35' x 40' |
| 55 | 1,400 | 35' x 40' |
| 56 | 1,400 | 35' x 40' |
| 57 | 1,400 | 35' x 40' |
| 58 | 1,400 | 35' x 40' |
| 59 | 1,400 | 35' x 40' |
| 60 | 1,400 | 35' x 40' |
| 61 | 1,400 | 35' x 40' |
| 62 | 1,400 | 35' x 40' |
| 63 | 1,400 | 35' x 40' |
| 64 | 1,400 | 35' x 40' |
| 65 | 1,400 | 35' x 40' |
| 66 | 1,400 | 35' x 40' |
| 67 | 1,400 | 35' x 40' |
| 68 | 1,400 | 35' x 40' |
| 69 | 1,400 | 35' x 40' |
| 70 | 1,400 | 35' x 40' |
| 71 | 1,400 | 35' x 40' |
| 72 | 1,400 | 35' x 40' |
| 73 | 1,400 | 35' x 40' |
| 74 | 1,400 | 35' x 40' |
| 75 | 1,400 | 35' x 40' |
| 76 | 1,400 | 35' x 40' |
| 77 | 1,400 | 35' x 40' |
| 78 | 1,400 | 35' x 40' |
| 79 | 1,400 | 35' x 40' |
| 80 | 1,400 | 35' x 40' |
| 81 | 1,400 | 35' x 40' |
| 82 | 1,400 | 35' x 40' |
| 83 | 1,400 | 35' x 40' |
| 84 | 1,400 | 35' x 40' |
| 85 | 1,400 | 35' x 40' |
| 86 | 1,400 | 35' x 40' |
| 87 | 1,400 | 35' x 40' |
| 88 | 1,400 | 35' x 40' |
| 89 | 1,400 | 35' x 40' |
| 90 | 1,400 | 35' x 40' |
| 91 | 1,400 | 35' x 40' |
| 92 | 1,400 | 35' x 40' |
| 93 | 1,400 | 35' x 40' |
| 94 | 1,400 | 35' x 40' |
| 95 | 1,400 | 35' x 40' |
| 96 | 1,400 | 35' x 40' |
| 97 | 1,400 | 35' x 40' |
| 98 | 1,400 | 35' x 40' |
| 99 | 1,400 | 35' x 40' |
| 100 | 1,400 | 35' x 40' |

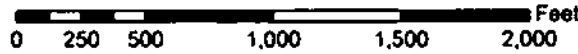
| Lot No. | Area (sq. ft.) | Dimensions |
|---------|----------------|------------|
| 1 | 1,400 | 35' x 40' |
| 2 | 1,400 | 35' x 40' |
| 3 | 1,400 | 35' x 40' |
| 4 | 1,400 | 35' x 40' |
| 5 | 1,400 | 35' x 40' |
| 6 | 1,400 | 35' x 40' |
| 7 | 1,400 | 35' x 40' |
| 8 | 1,400 | 35' x 40' |
| 9 | 1,400 | 35' x 40' |
| 10 | 1,400 | 35' x 40' |
| 11 | 1,400 | 35' x 40' |
| 12 | 1,400 | 35' x 40' |
| 13 | 1,400 | 35' x 40' |
| 14 | 1,400 | 35' x 40' |
| 15 | 1,400 | 35' x 40' |
| 16 | 1,400 | 35' x 40' |
| 17 | 1,400 | 35' x 40' |
| 18 | 1,400 | 35' x 40' |
| 19 | 1,400 | 35' x 40' |
| 20 | 1,400 | 35' x 40' |
| 21 | 1,400 | 35' x 40' |
| 22 | 1,400 | 35' x 40' |
| 23 | 1,400 | 35' x 40' |
| 24 | 1,400 | 35' x 40' |
| 25 | 1,400 | 35' x 40' |
| 26 | 1,400 | 35' x 40' |
| 27 | 1,400 | 35' x 40' |
| 28 | 1,400 | 35' x 40' |
| 29 | 1,400 | 35' x 40' |
| 30 | 1,400 | 35' x 40' |
| 31 | 1,400 | 35' x 40' |
| 32 | 1,400 | 35' x 40' |
| 33 | 1,400 | 35' x 40' |
| 34 | 1,400 | 35' x 40' |
| 35 | 1,400 | 35' x 40' |
| 36 | 1,400 | 35' x 40' |
| 37 | 1,400 | 35' x 40' |
| 38 | 1,400 | 35' x 40' |
| 39 | 1,400 | 35' x 40' |
| 40 | 1,400 | 35' x 40' |
| 41 | 1,400 | 35' x 40' |
| 42 | 1,400 | 35' x 40' |
| 43 | 1,400 | 35' x 40' |
| 44 | 1,400 | 35' x 40' |
| 45 | 1,400 | 35' x 40' |
| 46 | 1,400 | 35' x 40' |
| 47 | 1,400 | 35' x 40' |
| 48 | 1,400 | 35' x 40' |
| 49 | 1,400 | 35' x 40' |
| 50 | 1,400 | 35' x 40' |
| 51 | 1,400 | 35' x 40' |
| 52 | 1,400 | 35' x 40' |
| 53 | 1,400 | 35' x 40' |
| 54 | 1,400 | 35' x 40' |
| 55 | 1,400 | 35' x 40' |
| 56 | 1,400 | 35' x 40' |
| 57 | 1,400 | 35' x 40' |
| 58 | 1,400 | 35' x 40' |
| 59 | 1,400 | 35' x 40' |
| 60 | 1,400 | 35' x 40' |
| 61 | 1,400 | 35' x 40' |
| 62 | 1,400 | 35' x 40' |
| 63 | 1,400 | 35' x 40' |
| 64 | 1,400 | 35' x 40' |
| 65 | 1,400 | 35' x 40' |
| 66 | 1,400 | 35' x 40' |
| 67 | 1,400 | 35' x 40' |
| 68 | 1,400 | 35' x 40' |
| 69 | 1,400 | 35' x 40' |
| 70 | 1,400 | 35' x 40' |
| 71 | 1,400 | 35' x 40' |
| 72 | 1,400 | 35' x 40' |
| 73 | 1,400 | 35' x 40' |
| 74 | 1,400 | 35' x 40' |
| 75 | 1,400 | 35' x 40' |
| 76 | 1,400 | 35' x 40' |
| 77 | 1,400 | 35' x 40' |
| 78 | 1,400 | 35' x 40' |
| 79 | 1,400 | 35' x 40' |
| 80 | 1,400 | 35' x 40' |
| 81 | 1,400 | 35' x 40' |
| 82 | 1,400 | 35' x 40' |
| 83 | 1,400 | 35' x 40' |
| 84 | 1,400 | 35' x 40' |
| 85 | 1,400 | 35' x 40' |
| 86 | 1,400 | 35' x 40' |
| 87 | 1,400 | 35' x 40' |
| 88 | 1,400 | 35' x 40' |
| 89 | 1,400 | 35' x 40' |
| 90 | 1,400 | 35' x 40' |
| 91 | 1,400 | 35' x 40' |
| 92 | 1,400 | 35' x 40' |
| 93 | 1,400 | 35' x 40' |
| 94 | 1,400 | 35' x 40' |
| 95 | 1,400 | 35' x 40' |
| 96 | 1,400 | 35' x 40' |
| 97 | 1,400 | 35' x 40' |
| 98 | 1,400 | 35' x 40' |
| 99 | 1,400 | 35' x 40' |
| 100 | 1,400 | 35' x 40' |



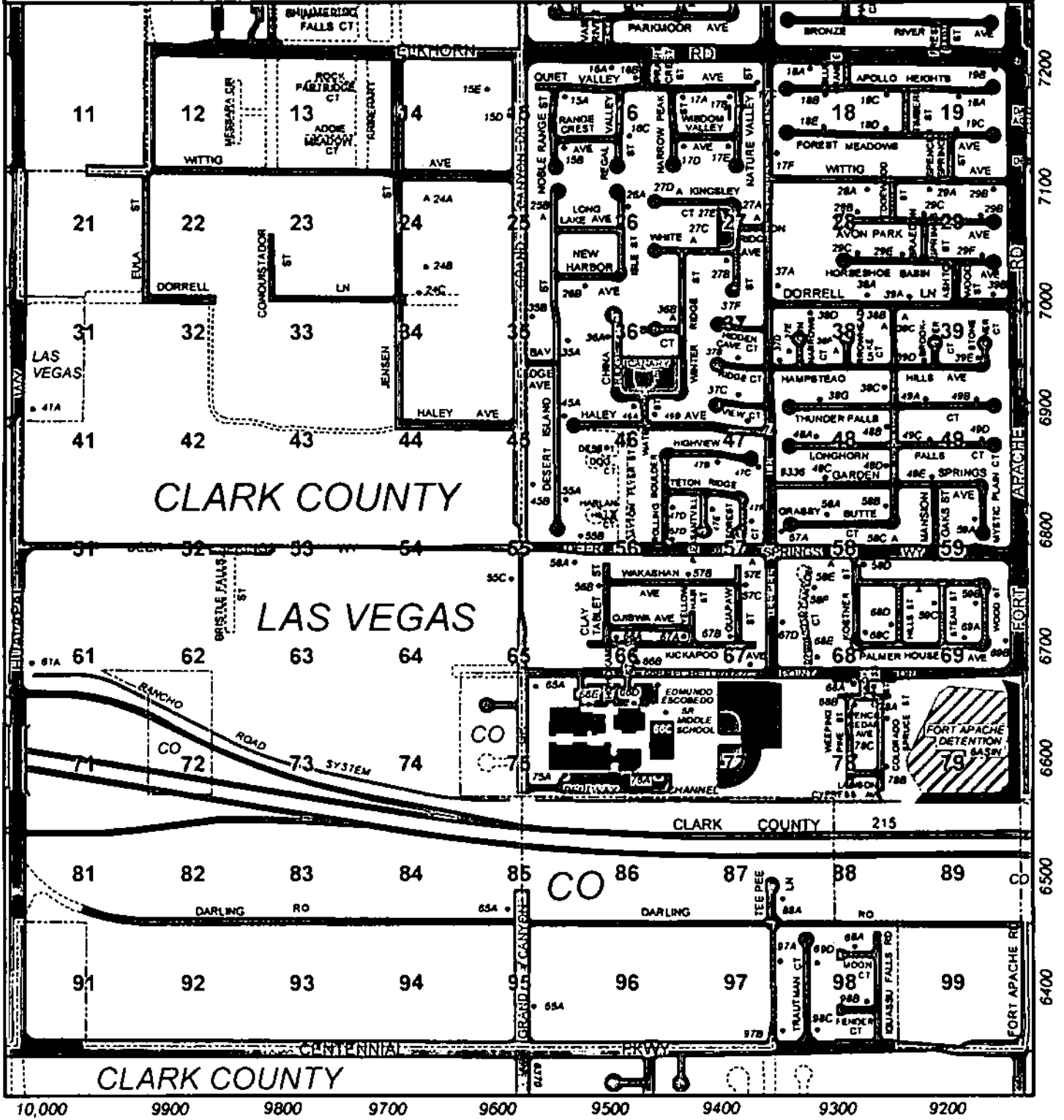


1515

© City of Las Vegas 10/20/14



| | | |
|------|------|------|
| 1414 | 1415 | 1416 |
| 1514 | 1515 | 1516 |
| 1614 | 1615 | 1616 |



10,000 9900 9800 9700 9600 9500 9400 9300 9200