

RED BLUFFS AT THE CROSSING UNIT 3

Recorded in Book 88 Page 46 of Plats

200 Scale Map Location: L-25-1

Fire Dept. District Map # 2315:21

MASTER SITE ADDRESS: 10003 COVINGTON CROSS DR


BLDG	22	UNIT	2211	1420	RED CREST LN	101	N/S	PRIVATE STREET
			2212			201		
			2221			102		
			2222			202		
			2231			103		
			2232			203		
			2241			104		
			2242			204		
BLDG	23	UNIT	2311	1410	RED CREST LN	101	N/S	PRIVATE STREET
			2312			201		
			2321			102		
			2322			202		
			2331			103		
			2332			203		
			2341			104		
			2342			204		
BLDG	24	UNIT	2411	10030	BEJAMIN NICHOLAS PL	101	E/W	PRIVATE STREET
			2412			201		
			2421			102		
			2422			202		
			2431			103		
			2432			203		
			2441			104		
			2442			204		
BLDG	25	UNIT	2511	10010	BEJAMIN NICHOLAS PL	101	E/W	PRIVATE STREET
			2512			201		
			2521			102		
			2522			202		
			2531			103		
			2532			203		
			2541			104		
			2542			204		
BLDG	26	UNIT	2611	10020	BEJAMIN NICHOLAS PL	101	E/W	PRIVATE STREET
			2612			201		
			2621			102		
			2622			202		
			2631			103		
			2632			203		
			2641			104		
			2642			204		
BLDG	27	UNIT	2711	1301	RED GABLE LN	101	N/S	PRIVATE STREET
			2712			201		
			2721			102		
			2722			202		

RED BLUFFS AT THE CROSSING UNIT 3

BLDG	33	UNIT	3341 3342	1310	RED GABLE LN	104 204	N/S	PRIVATE STREET
BLDG	34	UNIT	3411 3412 3421 3422 3431 3432 3441 3442	1300	RED GABLE LN	101 201 102 202 103 203 104 204	N/S	PRIVATE STREET
Common Area		A		10011	COVINGTON CROSS DR		E/W	PUBLIC STREET
Common Area			5	1414	RED CREST LN		N/S	PRIVATE STREET
Common Area			6	10011	BENJAMIN NICHOLAS PL		E/W	PRIVATE STREET
Common Area			7-10		INTERIOR DRIVE LANES			PRIVATE STREET
BLDG	G277-284	GARAGE UNIT		10038	BENJAMIN NICHOLAS PL		E/W	PRIVATE STREET
BLDG	G285-292	GARAGE UNIT		10034	BENJAMIN NICHOLAS PL		E/W	PRIVATE STREET
BLDG	G293-300	GARAGE UNIT		10006	BENJAMIN NICHOLAS PL		E/W	PRIVATE STREET
BLDG	G301-308	GARAGE UNIT		10002	BENJAMIN NICHOLAS PL		E/W	PRIVATE STREET
BLDG	G309-316	GARAGE UNIT		1315	RED GABLE LN		N/S	PRIVATE STREET
BLDG	G317-324	GARAGE UNIT		1319	RED GABLE LN		N/S	PRIVATE STREET
BLDG	G325-332	GARAGE UNIT		10022	CRIMSON PALISADES PL		E/W	PRIVATE STREET
BLDG	G333-340	GARAGE UNIT		10010	CRIMSON PALISADES PL		E/W	PRIVATE STREET
BLDG	G341-348	GARAGE UNIT		10002	CRIMSON PALISADES PL		E/W	PRIVATE STREET
BLDG	G349-356	GARAGE UNIT		1326	RED GABLE LN		N/S	PRIVATE STREET
BLDG	G357-364	GARAGE UNIT		1226	RED GABLE LN		N/S	PRIVATE STREET
BLDG	G365-372	GARAGE UNIT		1222	RED GABLE LN		N/S	PRIVATE STREET

ORIGINAL DATE: 2/22/1999

CITY OF LAS VEGAS
PLANNING & DEVELOPMENT DEPARTMENT


JOHN B HERBERT, PLANNER I

RED BLUFFS AT THE CROSSING UNIT 3

BLDG	27	UNIT	2731 2732 2741 2742	1301	RED GABLE LN	103 203 104 204	N/S	PRIVATE STREET
BLDG	28	UNIT	2811 2812 2821 2822 2831 2832 2841 2842	1311	RED GABLE LN	101 201 102 202 103 203 104 204	N/S	PRIVATE STREET
BLDG	29	UNIT	2911 2912 2921 2922 2931 2932 2941 2942	10011	CRIMSON PALISADES PL	101 201 102 202 103 203 104 204	E/W	PRIVATE STREET
BLDG	30	UNIT	3011 3012 3021 3022 3031 3032 3041 3042	10021	CRIMSON PALISADES PL	101 201 102 202 103 203 104 204	E/W	PRIVATE STREET
BLDG	31	UNIT	3111 3112 3121 3122 3131 3132 3141 3142	10001	CRIMSON PALISADES PL	101 201 102 202 103 203 104 204	E/W	PRIVATE STREET
BLDG	32	UNIT	3211 3212 3221 3222 3231 3232 3241 3242	1320	RED GABLE LN	101 201 102 202 103 203 104 204	N/S	PRIVATE STREET
BLDG	33	UNIT	3311 3312 3321 3322 3331 3332	1310	RED GABLE LN	101 201 102 202 103 203	N/S	PRIVATE STREET

CERTIFICATE OF AMENDMENT

RY R. NELSON, P.E.
sident

March 2, 1999

Ms. Rita M. Lumos
City Surveyor
City of Las Vegas
400 East Stewart Avenue
Las Vegas, Nevada 89101

STRUCTURAL
CIVIL
SURVEY

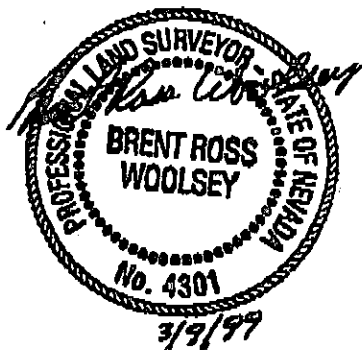
Subject: Red Bluffs At The Crossing Unit 3, Book 88, Page 46 of Plats, Lying within a portion of Section 25, T. 20 S., R. 59 E., M.D.M., and a portion of Section 30, Township 20 South, Range 60 East, M.D.M., City of Las Vegas, Clark County Nevada.

Dear Ms. Lumos:

In accordance with the provisions of N.R.S. 278.473, amend the subdivision plat of "Red Bluffs At The Crossing Unit 3, a Condominium Common Interest Community, recorded February 22, 1999 as Book 88, Page 46, of Plats in the Clark County Recorder's Office, Clark County, Nevada, Lying within a portion of Section 25, Township 20 South, Range 59 East, M.D.M., and a portion of Section 30, Township 20 South, Range 60 East, M.D.M., City of Las Vegas, Clark County, Nevada, in the following manner:

Building number 22 on sheet 3 of 7 on the recorded final map, has one unit number designation blank as shown on Exhibit 1. Exhibit 2 corrects the problem by placing unit designation (2232) into the blank space.

Brent Ross Woolsey
Professional Land Surveyor
Nevada Certificate No. 4301

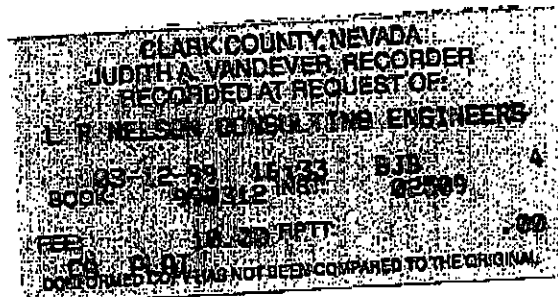


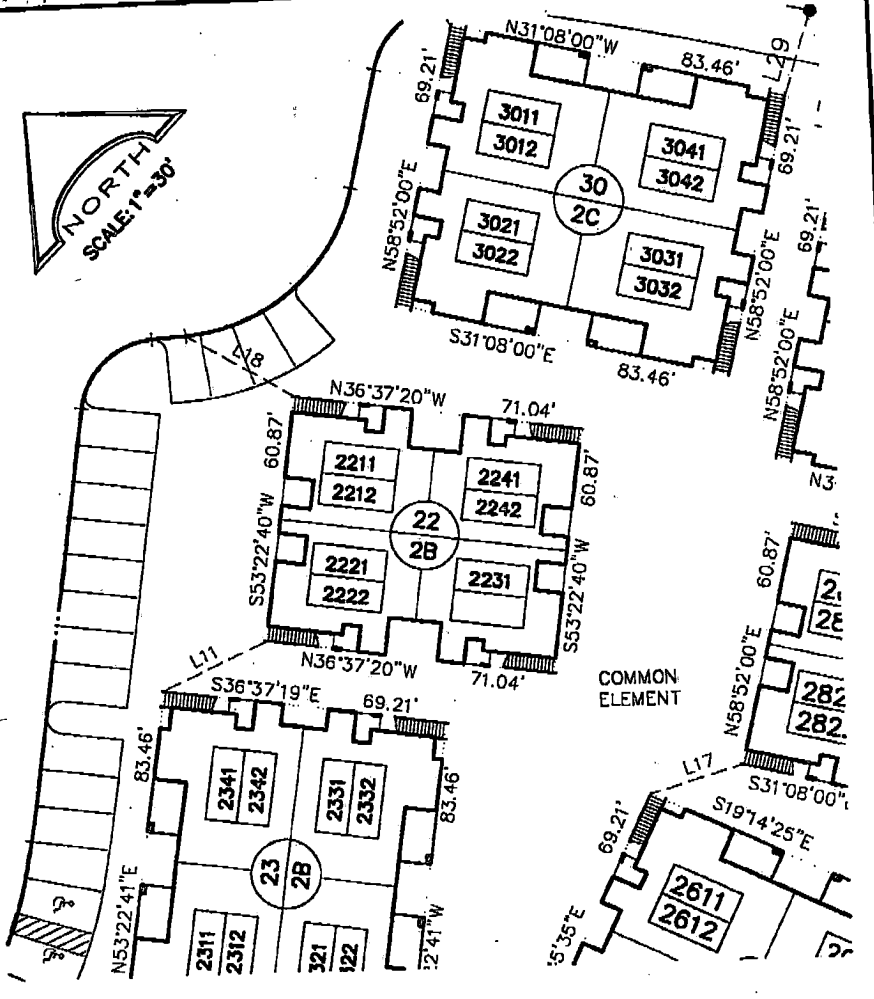
I hereby certify that I have examined the Certificate of Amendment and that the changes to the original document specified therein are provided for in applicable sections of N.R.S. 278.010 to 278.630, inclusive, 625.340 to 625.380, inclusive, and local ordinances adopted pursuant thereto, and I am satisfied that this Certificate of Amendment so amends or corrects the document as to make it technically correct.

Rita M. Lumos 3/11/99
Rita M. Lumos, P.L.S.
City Surveyor, City of Las Vegas
Nevada Certificate No. 5094

NEVADA
R. NELSON
CONSULTING ENGINEERS, INC.
1035 East Patrick Lane, Suite 9
Las Vegas, NV 89120
Phone 702 / 798-7978
FAX 702 / 451-2296

UTAH
R. NELSON
CONSULTING ENGINEERS, L.L.C.
2176 South 300 West, Suite 20
Sandy, UT 84070
Phone 801 / 352-2040
FAX 801 / 256-1126





COMMON ELEMENT

L. R. NELSON CONSULTING ENGINEERS, INC.

•STRUCTURAL 3035 East Patrick Lane Suite 9
 Las Vegas, Nevada 89120

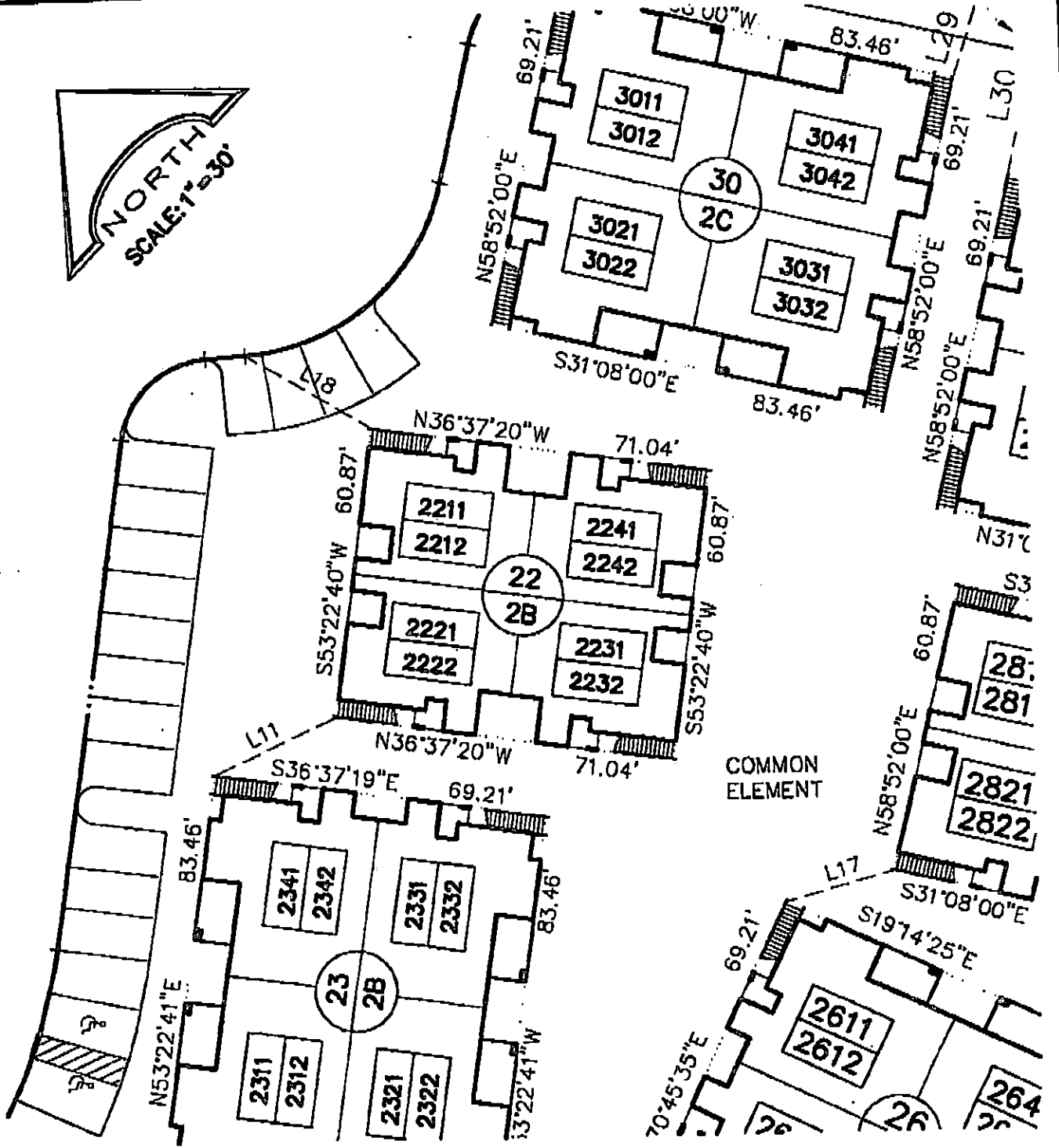
•CIVIL (702) 798-7978

•SURVEY (702) 451-2296

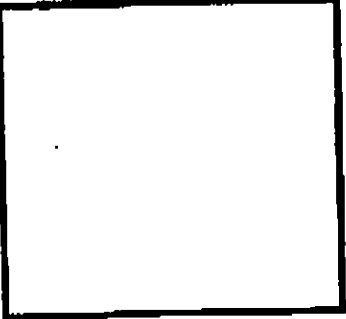
DATE: 3-2-99 PROJ.No: 218-067-952 DRWN: SJW

RED BLUFFS
AT THE CROSSING
UNIT 3

1"=30'
EXHIBIT 1



L. R. NELSON CONSULTING ENGINEERS, INC.
 -STRUCTURAL 3035 East Patrick Lane Suite 9
 Las Vegas, Nevada 89120
 -CIVIL (702) 798-7978
 -SURVEY (702) 451-2296



**RED BLUFFS
 AT THE CROSSING
 UNIT 3**

1"=30'
EXHIBIT 2