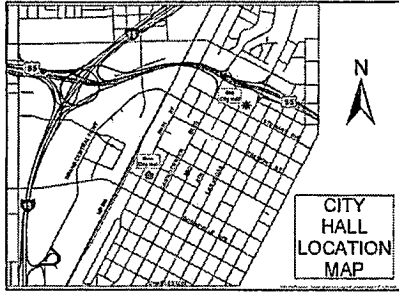


City of Las Vegas
Office Of The City Clerk
495 S. Main St., City Hall
Las Vegas, Nevada 89101

Return Service Requested Official Notice of Public Hearing



If you wish to file your protest or support on this request, check the appropriate box below and return this card in an envelope with postage to the Office Of The City Clerk at the address listed above, fax this side of this card to (702) 382-4803 or make your comments at www.lasvegasnevada.gov. If you would like to contact your Council Representative, please call (702) 229-6405.

I SUPPORT
this Request

I OPPOSE
this Request

Please use available blank space on card for your comments.

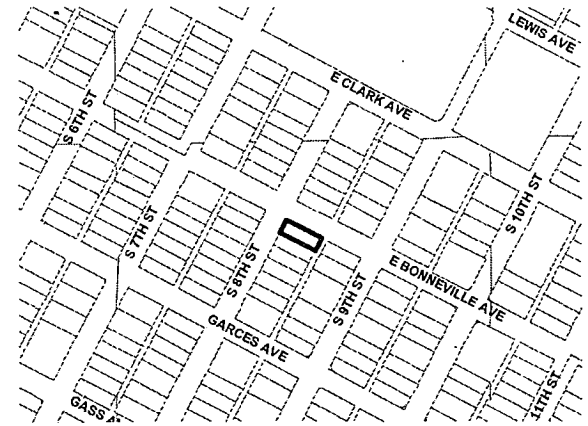
SDR-61033 [PRJ-60529]

City Council Meeting of November 18, 2015

Application Information

SDR-61033 - SITE DEVELOPMENT PLAN REVIEW RELATED TO ZON-61027, VAR-61029, VAR-61030 AND VAR-61032 - PUBLIC HEARING - APPLICANT: THOMAS SCHOEMAN - OWNER: EL WALKER, LLC - For possible action on a request for a Site Development Plan Review FOR A TWO-STORY, THREE-UNIT MULTI-FAMILY DEVELOPMENT WITH WAIVERS TO ALLOW A ZERO-FOOT LANDSCAPE BUFFER ALONG THE SOUTH PERIMETER WHERE EIGHT FEET IS REQUIRED, A ZERO-FOOT LANDSCAPE BUFFER ALONG THE NORTH PERIMETER WHERE 15 FEET IS REQUIRED AND A FOUR-FOOT LANDSCAPE BUFFER ALONG THE WEST PERIMETER WHERE 15 FEET IS REQUIRED on 0.16 acres adjacent to the southeast corner of Bonneville Avenue and 8th Street (APN 139-34-810-050), P-R (Professional Office and Parking) [PROPOSED: R-4 (High Density Residential)] Zone, Ward 3 (Coffin) [PRJ-60529].

Application Location



The proposed project may not pertain to the entire highlighted project site.

Public Hearing Information

Meeting: City Council
Date: *November 18, 2015*
Time: 1:00 P.M.
Location: City Council Chambers
495 South Main Street, 2nd Floor
Las Vegas, Nevada 89101

Any and all interested persons may appear and be heard at said meeting, or may, prior to this meeting, file a written objection thereto or approval thereof with the City Clerk, 2nd Floor, City Hall, 495 South Main Street, Las Vegas, Nevada 89101. For further information, including the full staff report, please call (702)229-6311 (7-1-1 Relay Nevada) or go to <http://www.lasvegasnevada.gov>.

Report of All Selected Parcels

Case Number: ZON-61027; VAR-61029; VAR-61030; VAR-61032 & SDR-61033 Printed On: Mon: October 26, 2015

<u>Owner</u>	<u>Address</u>	<u>Parcel Number</u>
(N) SITE STUDIOS L L C	2675 REGENCY COVE CT LAS VEGAS NV 89121-3967	13934811010
(N) SITE STUDIOS L L C	2675 REGENCY COVE CT LAS VEGAS NV 89121-3967	13934811011
10TH STREET L L C	531 S 10TH ST LAS VEGAS NV 89101-7025	13934811008
3 G K L L C	2920 N GREEN VALLEY PKWY #525 HENDERSON NV 89014	13934810080
3 G K L L C	2920 N GREEN VALLEY PKWY #5-525 HENDERSON nv 89014	13934810079
310 9TH STREET L L C	300 N LAS VEGAS BLVD LAS VEGAS NV 89101-2942	13934701010
518 GARCES AVE LTD	631 LAS VEGAS BLVD S LAS VEGAS NV 89101-6696	13934410186
601 BUILDING L L C	601 S 10TH ST LAS VEGAS NV 89101-7027	13934810120
609 SOUTH EIGHT STREET L L C	8130 LA MESA BLVD #93 LA MESA CA 91942-6437	13934810049
609 SOUTH EIGHTH STREET L L C	P O BOX 565 ROSS CA 94957	13934810048
610S 9TH L L C	75 PRINCEVILLE LN LAS VEGAS NV 89113	13934801008
611 S 6TH ST L L C	611 S 6TH ST LAS VEGAS NV 89101	13934410221
702 S 6TH ST L L C	9345 HELENA AVE LAS VEGAS NV 89129-2640	13934401016
708 SIXTH STREET L L C	P O BOX 28887 LAS VEGAS NV 89126-2887	13934410189
717 S 7TH ST L L C	925 LAS PALOMAS DR LAS VEGAS NV 89138	13934410243
718 PROFESSIONAL BUILDING L L C	718 S 8TH ST LAS VEGAS NV 89101-7007	13934810034
724 SOUTH 9TH STREET GROUP L L C	848 N RAINBOW BLVD #234 LAS VEGAS NV 89107	13934810072
7-ELEVEN INC	P O BOX 711 DALLAS TX 75221-0711	13934813001
7TH STREET MANAGEMENT L L C	700 S 7TH ST LAS VEGAS NV 89101	13934410227
7TH STREET MANAGEMENT L L C	700 S 7TH ST LAS VEGAS NV 89101	13934410228
A A K P	7151 COPPER RD LAS VEGAS NV 89110-4221	13934810010
ADAMS BRIAN M	712 S 8TH ST LAS VEGAS NV 89101-7007	13934810033
APPLE ROBERT M & MARY M	1405 STRONG DR LAS VEGAS NV 89102-2143	13934810044
AUGUST KATHIE M	1151 SHADY RUN TERR HENDERSON NV 89011-3041	13934810077
AUSTIN JOE L & NANCY J FAMILY TR	AUSTIN JOE L & NANCY J TRS 112 N 19TH ST LAS VEGAS NV 89101-4403	13934810086
B T C PROPERTIES L L C	463 WILSHIRE BLVD LAS VEGAS NV 89110	13934813004
BAKER LAW OFFICES P C	500 S 8TH ST LAS VEGAS NV 89101-7003	13934701006
BANK U S NEVADA	2800 E LAKE ST LAKE0012 MINNEAPOLIS MN 55408-3116	13934812001
BEACH CITIES INVESTMENTS L L C	P O BOX 7324 LAS VEGAS NV 89125	13934810091
BERMAN BRIAN K & K FAM IRR TR	BERMAN BRIAN KEITH TRS 1340 MARINA DEL REY CT LAS VEGAS NV 89117-1542	13934810036
BOND STREET TRUST	INGERSOLL DANIELLE TRS 4555 CAROL CIR LAS VEGAS NV 89120-2309	13934410239
BONNEVILLE BUNGALOWS L L C	3286 BRENTWOOD ST LAS VEGAS NV 89121	13934710042

Report of All Selected Parcels

Case Number: ZON-61027; VAR-61029; VAR-61030; VAR-61032 & SDR- 61033 **Printed On:** Mon: October 26, 2015

<u>Owner</u>	<u>Address</u>	<u>Parcel Number</u>
BONNEVILLE BUNGALOWS L L C	3286 BRENTWOOD ST LAS VEGAS NV 89121	13934710044
BONNEVILLE BUNGALOWS L L C	3286 BRENTWOOD ST LAS VEGAS NV 89121	13934810018
BONNEVILLE BUNGALOWS L L C	3286 BRENTWOOD ST LAS VEGAS NV 89121	13934710043
BRENNAN GARY R	3532 BLACKSTONE ST LAS VEGAS NV 89121	13934810094
BUSH ROBERT J & MILDRED A LIV TR	BUSH ROBERT J & MILDRED A TRS 7233 RICHMOND HEIGHTS DR LAS VEGAS NV 89128-3104	13934811015
BUSTOS MARIA	410 FINCH RIDGE AVE NORTH LAS VEGAS NV 89032	13934811019
BUSTOS ORLANDO	6429 OUIDA WAY LAS VEGAS NV 89108	13934811018
C & A INVESTMENT TRUST	3022 W BEACH DR OAK ISLAND NC 28465-7735	13934710014
C & A INVESTMENT TRUST	3022 W BEACH DR OAK ISLAND NC 28465-7735	13934710013
C & M PARTNERSHIP	629 S 6TH ST LAS VEGAS NV 89101-6919	13934410217
CATRAM L L C	612 S 10TH ST LAS VEGAS NV 89101-7001	13934810096
CHAD JOSEPH L L C	415 S 6TH ST #100 LAS VEGAS NV 89101-6937	13934711004
CHAD JOSEPH L L C	415 S 6TH ST #100 LAS VEGAS NV 89101-6937	13934711005
CHARLESTON TOWERS L L C	18501 COLLIER AVE #B-106 LAKE ELSINORE CA 92530-2764	13934810074
CHARLESTON TOWERS L L C	18501 COLLIER AVE #B-106 LAKE ELSINORE CA 92530-2764	13934810102
CHARLESTON TOWERS L L C	18501 COLLIER AVE #B-106 LAKE ELSINORE CA 92530-2764	13934810104
CHARLESTON TOWERS L L C	18501 COLLIER AVE #B-106 LAKE ELSINORE CA 92530-2764	13934810103
CHARLESTON TOWERS L L C	18501 COLLIER AVE #B-106 LAKE ELSINORE CA 92530-2764	13934810105
CHARLESTON TOWERS L L C	18501 COLLIER AVE #B-106 LAKE ELSINORE CA 92530-2764	13934812003
CHARLESTON TOWERS L L C	18501 COLLIER AVE #B-106 LAKE ELSINORE CA 92530-2764	13934810101
CHARLESTON TOWERS L L C	18501 COLLIER AVE #B-106 LAKE ELSINORE CA 92530-2764	13934810075
CHEUNG KIN YAN	P O BOX 30668 LAS VEGAS NV 89173-0668	13934810013
CHURCH L D S PRESIDING BISHOP	50 E NORTH TEMPLE ST 22ND FLOOR SALT LAKE CITY UT 84150-0022	13934810089
CHURCH L D S PRESIDING BISHOP	50 E NORTH TEMPLE ST 22ND FLOOR SALT LAKE CITY UT 84150-0022	13934811001
CINLEE 7 L L C	608 S 8TH ST LAS VEGAS NV 89101-7005	13934810023
CIVIL DISPUTE RESOLUTION L L C	624 S 9TH ST LAS VEGAS NV 89101-7013	13934810065
CLARK COUNTY BAR ASSOCIATION	717 S 8TH ST LAS VEGAS NV 89146	13934801009
CLARK COUNTY LAW FOUNDATION	725 S 8TH ST LAS VEGAS NV 89101-7093	13934810038
CLARK COUNTY LAW FOUNDATION	725 S 8TH ST LAS VEGAS NV 89101-7093	13934810037
CLEMENTE JACQUES H	529 S 10TH ST LAS VEGAS NV 89101-7025	13934811007
COLE & CASHS CASTLE L L C	108 QUAIL RUN RD HENDERSON NV 89014-2149	13934410184
COMER FAMILY REVOCABLE TRUST	COMER OWEN LOUIS & GLORIA G TRS 3961 W CHARLESTON BLVD LAS VEGAS NV 89102-1620	13934810039

Report of All Selected Parcels

Case Number: ZON-61027; VAR-61029; VAR-61030; VAR-61032 & SDR-61033 Printed On: Mon: October 26, 2015

<u>Owner</u>	<u>Address</u>	<u>Parcel Number</u>
CROSSHILL 2 L L C	500 S FOURTH ST LAS VEGAS NV 89101-6599	13934810014
DAPPER J CHRISTOPHER	985 WHITE DR #100 LAS VEGAS NV 89119	13934811009
DECKER L L C	8941 TORCELLO DR LAS VEGAS NV 89117	13934410219
DEER SPRINGS L L C	3317 W CHARLESTON BLVD LAS VEGAS NV 89102-1835	13934810073
DEN EQUITY L L C	616 S 8TH ST LAS VEGAS NV 89101-7005	13934810026
DIAMOND DOWNTOWN L L C	7885 WESTWIND RD LAS VEGAS NV 89139	13934810003
DIAMOND DOWNTOWN L L C	7885 WESTWIND RD LAS VEGAS NV 89139	13934801011
DOWNTOWN SANCHEZ L L C	3960 HOWARD HUGHES PKWY #150 LAS VEGAS NV 89169	13934810029
DRAPS-AZ L L C	720 S 7TH ST 3RD FLR LAS VEGAS NV 89101-6932	13934410229
E & C L L C	P O BOX 31691 LAS VEGAS NV 89173-1691	13934810112
E L WALKER L L C	37 PROMONTORY RIDGE DR LAS VEGAS NV 89135	13934810050
ELLIS FAMILY TRUST	ELLIS FRANK A III & P L CO-TRS 510 S 9TH ST LAS VEGAS NV 89101-7011	13934810057
EVANGELISTA L L C	700 S SEVENTH ST LAS VEGAS NV 89101-6908	13934401005
EVAPS L L C	P O BOX 531461 HENDERSON NV 89053	13934701009
F & J L L C	850 E BONNEVILLE AVE LAS VEGAS NV 89101-7031	13934810061
F M F L L C	1401 LAS VEGAS BLVD SO LAS VEGAS NV 89104-1327	13934710026
F M F L L C	1401 LAS VEGAS BLVD SO LAS VEGAS NV 89104-1327	13934710025
FRITZ ON SEVENTH L L C	609 S 7TH ST LAS VEGAS NV 89101-6905	13934810015
GAMETTE BRAUNDA T	GAMETTE CRAIG T & JANE M 620 S 8TH ST LAS VEGAS NV 89101-7005	13934810027
GANG JOONSU	P O BOX 270815 LAS VEGAS NV 89127-4815	13934811021
GARCIA-MENDOZA & ASSOCIATES	501 S 7TH ST LAS VEGAS NV 89101-6903	13934710040
GHANDI NEDDA	GHANDI MOHSEN & MIRIAM 707 S 10TH ST LAS VEGAS NV 89101	13934810107
GIUNTA ROBERT & LORI REV TR AGMT	GIUNTA ROBERT G & LORI A CO-TRS 881 SHIRLEY LN BOULDER CITY NV 89005-3617	13934310070
GLASER G BARRY J & JANE A	2470 OAK ST #D SANTA MONICA CA 90405	13934811002
GOLDBERG AUBREY & JOANNE A ETAL	601 S 9TH ST LAS VEGAS NV 89101-7012	13934810118
GOLDBERG AUBREY & JOANNE A ETAL	601 S 9TH ST LAS VEGAS NV 89101-7012	13934810119
GRAVES JOHN J JR	LEAVITT TERRY VAN 601 S 6TH ST LAS VEGAS NV 89101-6919	13934310072
GRAVES JOHN J JR	LEAVITT TERRY V 601 S 6TH ST LAS VEGAS NV 89101-6919	13934410222
GRUMPY GUYS L L C	517 S 9TH ST LAS VEGAS NV 89101	13934810088
HAFEN GREGORY & S 1989 LIV TR	HAFEN GREGORY T & SUZANNE B TRS 525 S 9TH ST LAS VEGAS NV 89101-7010	13934810087
HEKATE PROPERTIES L L C	5270 OBERLIN DR SAN DIEGO CA 92121	13934810058
HOLMES LESTER & KATHELEEN TRUST	MURPHY LESLIE ANN TRS 7900 KIOWA CIR LAS VEGAS NV 89149	13934810025

Report of All Selected Parcels**Case Number:** ZON-61027; VAR-61029; VAR-61030; VAR-61032 & SDR-61033 **Printed On:** Mon: October 26, 2015

<u>Owner</u>	<u>Address</u>	<u>Parcel Number</u>
HWANG CALVIN H K & GLADYS M L	1195 PINE BLUFF DR PASADENA CA 91107-1753	13934811016
INTERMOUNTAIN WEST COMMUNICATION	1500 FOREMASTER LN LAS VEGAS NV 89101	13934810078
INTERNATIONAL ASSN FIREFIGHTERS	502 S 9TH ST LAS VEGAS NV 89101-7011	13934710057
J B I Z HOLDINGS L L C	BING 1 L L C 626 S 10TH ST LAS VEGAS NV 89101-7001	13934810098
J C S 1 L L C	P O BOX 50762 HENDERSON NV 89016-0762	13934410211
J J M PROPERTIES L L C	520 S 4TH ST #300 LAS VEGAS NV 89101-6524	13934410216
JACK & GRACIE L L C	7 MOUNTAIN COVE CT HENDERSON NV 89052-6680	13934810022
JAM II HOLDINGS L L C	701 S 7TH ST LAS VEGAS NV 89101-6907	13934801006
JOHNSON SARAH ANN	BEACH CITITES INVESTMENTS L L C P O BOX 7324 LAS VEGAS NV 89125	13934810090
JORDAN SHARON G	978 AUGUSTA LN FALLON NV 89406	13934813003
JOSEPH CHAD L L C	415 S 6TH ST #100 LAS VEGAS NV 89101-6937	13934711006
KALUZNA-WSZOLEK MARIE T	630 S 9TH ST LAS VEGAS NV 89101-7013	13934810067
KENNY CRAIG	501 S 8TH ST LAS VEGAS NV 89101-7002	13934810052
KENNY CRAIG P	501 S 8TH ST LAS VEGAS NV 89101-7002	13934810006
KENNY CRAIG P	501 S 8TH ST LAS VEGAS NV 89101-7002	13934410242
KENNY CRAIG P	CRAIG P KENNY & ASSOC LTD LEASE 501 S 8TH ST LAS VEGAS NV 89101-7002	13934701008
KENNY CRAIG PETER & ELLEN KAY	501 S 8TH ST LAS VEGAS NV 89101	13934810051
KHALAF ALEXANDER & F REV LIV TR	O V B TRUST 2370 CORPORATE CIR #250 HENDERSON NV 89074	13934710016
KHALAF FAMILY TRUST	KALIFANO ALEXANDER L L C 265 PILOT RD LAS VEGAS NV 89119	13934810068
KIM FAMILY TRUST	KIM WON SON & HAE SOOK TRS 2101 S WATSON ST LA HABRA CA 90631-9518	13934810093
KIM FAMILY TRUST	KIM WON SON & HAE SOOK TRS 2101 S WATSON ST LA HABRA CA 90631-9518	13934810092
KING ANNIE J ETAL	P E L ENTERPRISES L L C 214 S MARYLAND PKWY LAS VEGAS NV 89101-5319	13934813002
KRIEGER FAMILY TRUST	KRIEGER CHERYL A TRS 8009 SUMMER HARVEST AVE LAS VEGAS NV 89129-7304	13934810012
KUNG ANNIE J ETAL	P E L ENTERPRISES L L C 2822 ASHBY AVE LAS VEGAS NV 89102	13934810106
LAGUNA CEDAR CLIFF PARTNERSHIP	MASON DAVID L LIVING TRUST 2003 1137 SO RANCHO DR #120 LAS VEGAS NV 89102-2259	13934310065
LANG GARY D & TRACY	6449 CELESTE AVE LAS VEGAS NV 89107-2402	13934410241
LAS VEGAS ICE L L C	5655 S YOSEMITE ST #301 GREENWOOD VILLAGE CO 80111-3221	13934301011
LAYTON DONALD R & COLEEN ETAL	SPRAGUE GORDON L & BEVERLY 606 S 9TH ST LAS VEGAS NV 89101-7013	13934810060
LAYTON LAYTON & TOBLER L L P	606 S 9TH ST LAS VEGAS NV 89101-7013	13934810062
LEAVITT ANDREW M & P A REV TR	LEAVITT ANDREW M & PATRICIA TRS 633 S 7TH ST LAS VEGAS NV 89101	13934810011
LEE BRYON T K REVOCABLE FAM TR	LEE BRYON T K TRS P O BOX 19088 LAS VEGAS NV 89132-0088	13934811023
LEGACY L V L L C	706 S 8TH ST LAS VEGAS NV 89101-7007	13934810031

Report of All Selected Parcels**Case Number:** ZON-61027; VAR-61029; VAR-61030; VAR-61032 & SDR- 61033 **Printed On:** Mon: October 26, 2015

<u>Owner</u>	<u>Address</u>	<u>Parcel Number</u>
LEGAL AID CENTER SOUTHERN NEVADA	725 E CHARLESTON BLVD LAS VEGAS NV 89104	13934401017
LIGON KYLE L REVOCABLE TRUST	LIGON KYLE L TRS 840 S RANCHO 4-329 LAS VEGAS NV 89106	13934810021
LUKE FAMILY TRUST	LUKE MARILYN A & RONALD G TRS 1311 WEBSTER ST #E314 ALAMEDA CA 94501-3861	13934811020
LYONS KEITH M JR	512 S 8TH ST LAS VEGAS NV 89101-7003	13934710046
M & P M L L C	19 CASTLE OAKS CT LAS VEGAS NV 89141-6043	13934810095
MAIN STREET DEVELOPMENT L L C	37 PROMONTORY RIDGE DR LAS VEGAS NV 89135	13934710019
MARK JAMES L L C	415 S 6TH ST #100 LAS VEGAS NV 89101-6937	13934711002
MARK JAMES L L C	415 S 6TH ST #100 LAS VEGAS NV 89101-6937	13934711001
MARK JAMES L L C	415 S 6TH ST #100 LAS VEGAS NV 89101-6937	13934710010
MARK JAMES L L C	415 S 6TH ST #100 LAS VEGAS NV 89101-6937	13934711003
MARSH GREG W REVOCABLE TRUST	MARSH GREG W TRS 731 S 7TH ST LAS VEGAS NV 89101-6907	13934410240
MARSHALL ROBERT E	625 S 8TH ST LAS VEGAS NV 89101-7004	13934801005
MASON DAVID L LIVING TRUST 2003	MASON DAVID L TRS 1137 SO RANCHO DR #120 LAS VEGAS NV 89102-2259	13934310078
MCMAHAN FAMILY 1999 LIVING TRUST	MCMAHAN ROY ROBERT & NORMA P TRS 1589 TRAVOIS CIR LAS VEGAS NV 89119-6283	13934810028
MCRIMMON S ARCHIE JR	FLEMING PAMELA H 6859 S EASTERN AVE #102 LAS VEGAS NV 89119-0003	13934810019
MEEK RICHARD & RAMONA LIVING TR	MEEK RAMONA J TRS 613 S 8TH ST LAS VEGAS NV 89101-7004	13934810122
MORELLI MARY KATHRYN	HICKS JAMES A & MARITH P TRUST 2265 MOHAWK ST LAS VEGAS NV 89146-3311	13934810055
MUSHKIN MAY B REVOCABLE TRUST	MUSHKIN MAY B TRS 4475 S PECOS RD LAS VEGAS NV 89121-5029	13934310069
NEVADA LEGAL SERVICES INC	800 S 6TH ST LAS VEGAS NV 89101-6924	13934310067
NEVADA LEGAL SERVICES INC	800 S 6TH ST LAS VEGAS NV 89101-6924	13934310068
NOMAWA PROPERTIES L L C	528 S 8TH ST LAS VEGAS NV 89101-7003	13934810020
OXFORD COURT 3RD FLOOR L L C	415 S 6TH ST #100 LAS VEGAS NV 89101	13934711007
OXFORD COURT 3RD FLOOR L L C	415 S 6TH ST #100 LAS VEGAS NV 89101	13934711008
OXFORD COURT 3RD FLOOR L L C	415 S 6TH ST #100 LAS VEGAS NV 89101	13934711009
P & M M L L C	19 CASTLE OAKS CT LAS VEGAS NV 89141-6043	13934410212
P A C HOLDINGS L L C	617 S 8TH ST #A LAS VEGAS NV 89101-7082	13934810045
P G T A PROPERTIES L L C	P O BOX 270815 LAS VEGAS NV 89127-4815	13934811022
P L P HOLDINGS L L C	1330 JERSEY AVE S MINNEAPOLIS MN 55426-2202	13934801007
P M K L L C	BROWN JAMES J & LAURA B FAM TR 9450 POLARIS AVE LAS VEGAS NV 89139-8311	13934810099
PAIR-A-DICE HOLDINGS L L C	711 S 9TH ST LAS VEGAS NV 89101-7014	13934810076
PAYNE CARY COLT 1992 TRUST AGMT	PAYNE CARY COLT TRS 700 S 8TH ST LAS VEGAS NV 89101-7007	13934810030
PICHARDO JOSE	1450 W HORIZON RIDGE PKWY #B304 HENDERSON NV 89012	13934810110

Report of All Selected Parcels

Case Number: ZON-61027; VAR-61029; VAR-61030; VAR-61032 & SDR-61033 **Printed On:** Mon: October 26, 2015

<u>Owner</u>	<u>Address</u>	<u>Parcel Number</u>
PIGGY 23 L L C	625 S 6TH ST LAS VEGAS NV 89101-6919	13934410218
PILA DE ORO L L C	716 VAQUERO DR MOUNTAIN VIEW CA 94043	13934811013
PILA DE ORO L L C	716 VAQUERO DR MOUNTAIN VIEW CA 94043	13934811012
POLURI VIJAYA	C S E HOLDING L L C 506 PEPPERTREE RD WALNUT CREEK CA 94598-2702	13934810032
PROVIEW SERIES 8 L L C	144 N BRISTOL AVE LOS ANGELES CA 90049	13934710041
QUINN MICHELE C ART ADVISORY L L	620 S 7TH ST LAS VEGAS NV 89101-6906	13934410223
QUITORIO NIDA & BUDDY N	5640 SILVER BEAK WY LAS VEGAS NV 89118-1953	13934810054
R & S FAMILY TRUST	531 S 10TH ST LAS VEGAS NV 89101-7025	13934810111
R G T HOLDINGS L L C	505 SANSOME ST 6TH FLR SAN FRANCISCO CA 94123	13934810056
R L P COTTAGE L L C	804 AQUITAINE CT LAS VEGAS NV 89145	13934710027
R N M C M L L C	1589 TRAVOIS CIR LAS VEGAS NV 89119	13934810035
REBUILDING TOGETHER SO NEVADA	611 S NINTH ST LAS VEGAS NV 89101-7012	13934810083
REYES SUSANA LIV TR	REYES SUSANA TRS 2106 INVERNESS DR HENDERSON NV 89074-4134	13934710045
ROSS DANIEL	P O BOX 531461 HENDERSON NV 89053	13934710029
ROUSE FAMILY PROPERTIES L L C	523 S 8TH ST LAS VEGAS NV 89101-7002	13934810053
S A M S PROPERTIES L L C	P O BOX 81746 LAS VEGAS NV 89180-1746	13934811004
S A M S PROPERTIES L L C	P O BOX 81746 LAS VEGAS NV 89180-1746	13934811003
S A M S PROPERTIES L L C	P O BOX 81746 LAS VEGAS NV 89180-1746	13934811005
S J LIVING TRUST	1732 GLENVIEW DR LAS VEGAS NV 89134	13934801001
SAINT MAISIE L L C	3540 W SAHARA AVE #632 LAS VEGAS NV 89102	13934810097
SCHOOL BOARD OF TRUSTEES	4190 MCLEOD DR 2ND FLR LAS VEGAS NV 89121	13934710038
SCHOOL BOARD OF TRUSTEES	4190 MCLEOD DR 2ND FLR LAS VEGAS NV 89121	13934710039
SCHOOL BOARD OF TRUSTEES	4190 MCLEOD DR 2ND FLR LAS VEGAS NV 89121	13934712018
SCHUFF FAMILY TRUST 2001	SCHUFF GREGORY J & DEBORAH D TRS 2430 KARLI DR LAS VEGAS NV 89102-2103	13934810100
SCOW STEVEN R & MARY BETH	326 MEDIO CT HENDERSON NV 89014-5132	13934810004
SEDDIGHZADEH SIMON SIAMAK	P O BOX 270723 LAS VEGAS NV 89127	13934810108
SENIOR CARE HEALTH NETWORK INC	710 S 9TH ST LAS VEGAS NV 89101-7015	13934810070
SEVENTH STREET L L C	P O BOX 18501 ASHEVILLE NC 28814-0501	13934710023
SHANER CHERYL TRUST	8208 W CAMERO AVE LAS VEGAS NV 89113-4405	13934410188
SHANER JEFFREY IAN	715 S 6TH ST LAS VEGAS NV 89101-6921	13934410215
SHANER JEFFREY IAN	715 S 6TH ST LAS VEGAS NV 89101-6921	13934410214
SHANER JEFFREY IAN	715 S 6TH ST LAS VEGAS NV 89101-6921	13934410213

Report of All Selected Parcels

Case Number: ZON-61027; VAR-61029; VAR-61030; VAR-61032 & SDR-61033 **Printed On:** Mon: October 26, 2015

<u>Owner</u>	<u>Address</u>	<u>Parcel Number</u>
SHUFFIELD JACQUELINE FAMILY TR	LOPRESTI LOUISE TRS 7485 ULLOM DR LAS VEGAS NV 89139-5770	13934810007
SILVER STATE CAPITAL L L C	631 S 10TH ST LAS VEGAS NV 89101-7027	13934810109
SIXTH ST STRATEGIC SOLUTIONS LLC	516 S 6TH ST #100 LAS VEGAS NV 89101-6998	13934310066
SKUPA WILLIAM S & SHARRON R	2412 GREENS AVE HENDERSON NV 89014	13934810001
SMITH LESLIE H REV LIV TR	SMITH LESLIE H TRS 4711 E FLAMINGO RD LAS VEGAS NV 89121	13934410185
SORENSON R PAUL	HIGGINS SARAH 513 S 6TH ST LAS VEGAS NV 89101-6917	13934710015
SOUSA C & M FAMILY TRUST	SOUSA MANUEL F & CHRISTINE E TRS 736 4TH ST HERMOSA BEACH CA 90254-4722	13934810116
STEELE T H	P O BOX 424 EASTLAKE CO 80614-0424	13934811006
TEEN CHALLENGE NEVADA	P O BOX 13410 LAS VEGAS NV 89112	13934810071
TEG 8TH STREET L L C	6018 S DURANGO DR #110 LAS VEGAS NV 89113	13934810041
TEITEL SUSAN M	10067 STAMPEDE CANYON CT LAS VEGAS NV 89147-7221	13934810005
TERRY WILLIAM B	4564 S PECOS LAS VEGAS NV 89121-5923	13934710020
TERRY WILLIAM B	4564 S PECOS LAS VEGAS NV 89121-5923	13934710021
THIRIOT 1977 TR	THIRIOT JOSEPH E TRS 6821 ELM DALE PL LAS VEGAS NV 89103-4213	13934810081
THIRIOT 1977 TRUST	THIRIOT JOSEPH E TRS 6821 ELM DALE PL LAS VEGAS NV 89103-4213	13934810082
THORNTON MICHAEL H	9549 ABBEY FIELD RD SANTEE CA 92071-2602	13934811017
TRACHTMAN GEORGE G	520 S 9TH ST LAS VEGAS NV 89101-7011	13934810059
TRUSTEE CLARK COUNTY TREASURER	626 S 9TH ST LAS VEGAS NV 89101-7013	13934810066
VANDERWERKEN PAUL W & LESLIE H	522 S 7TH ST LAS VEGAS NV 89101-6904	13934710022
W R P SUBTRUST-PECCOLE WILLIAM S	8689 W CHARLESTON BLVD #109 LAS VEGAS NV 89117-5485	13934710018
W R P SUBTRUST-PECCOLE WILLIAM S	8689 W CHARLESTON BLVD #109 LAS VEGAS NV 89117-5485	13934710017
WALKER FRED R TRUST	WALKER FRED R TRS 5240 ACGUA LN PAHRUMP NV 89061-7037	13934810024
WATERS KERMIT	WATERS KERMIT L 704 S 9TH ST LAS VEGAS NV 89101-7015	13934810069
WAWERNA JOHN	GIUNTA ROBERT G 881 SHIRLEY LN BOULDER CITY NV 89005-3617	13934310071
WAWERNA JOHN C	614 S 6TH ST LAS VEGAS NV 89101-6920	13934410183
WAYWARD PROPERTIES INC	228 SOUTH 4TH ST #100 LAS VEGAS NV 89101-5709	13934710024
WEISBART FAMILY PROPERTIES L L C	3515 COCHISE LN LAS VEGAS NV 89169	13934710011
WEISBART FAMILY PROPERTIES L L C	3515 COCHISE LN LAS VEGAS NV 89169	13934710012
WHITT PROPERTIES L L C	840 S RANCHO DR #4-408 LAS VEGAS NV 89106	13934811014
WILDFIELD CO REVOCABLE	CONEH SHIMON & KRISTINA TRS 4583 W DESERT INN RD LAS VEGAS NV 89102-7315	13934410220
WINCAR HOLDINGS L L C	510 S 8TH ST LAS VEGAS NV 89101-7003	13934710047