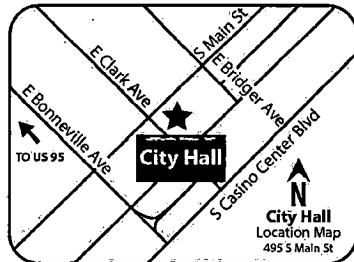


City of Las Vegas  
Office Of The City Clerk  
495 South Main Street, 2<sup>nd</sup> Floor  
Las Vegas, Nevada 89101



PRSR1 STD  
U.S. Postage  
**PAID**  
Las Vegas, NV  
Permit No. 1630

## Return Service Requested Official Notice of Public Hearing



If you wish to file your protest or support on this request, check the appropriate box below and return this card in an envelope with postage to the Office Of The City Clerk at the address listed above or fax this side of this card to (702) 382-4803. If you would like to contact your Council Representative, please call (702) 229-6405.

I SUPPORT  
this Request

I OPPOSE  
this Request

Please use available blank space on card for your comments.

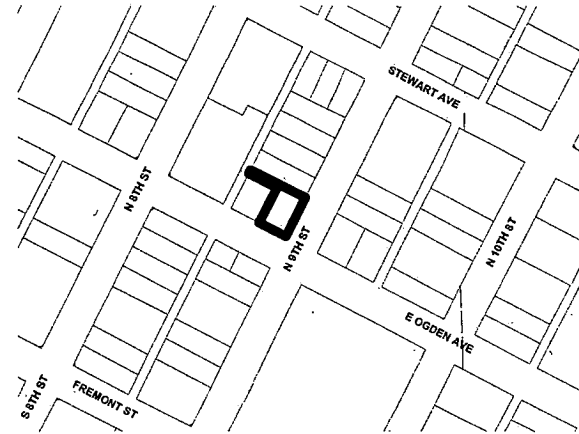
**RQR-63628**

City Council Meeting of **04/06/16**

## Application Information

**RQR-63628 - REQUIRED REVIEW - PUBLIC HEARING - APPLICANT: OGDEN MART, LLC - OWNER: PRESARIO PROPERTIES, LLC** - For possible action on a request for a Required Review of the approved REVIEW OF CONDITION (ROC-60336) TO DELETE CONDITION #2 at 823 East Ogden Avenue (APN 139-34-612-047), C-2 (General Commercial) Zone, Ward 5 (Barlow).

## Application Location



The proposed project may not pertain to the entire highlighted project site.

## Public Hearing Information

**Meeting:** City Council  
**Date:** *April 6, 2016*  
**Time:** 9:00 A.M.  
**Location:** City Council Chambers  
495 South Main Street, 2<sup>nd</sup> Floor  
Las Vegas, Nevada

Any and all interested persons may appear and be heard at said meeting, or may, prior thereto, file written objections thereto or approvals thereof with the City Clerk, 1st Floor, City Hall, 400 Stewart Avenue, Las Vegas, Nevada, 89101. For further information, please call (702) 229-6311 (TTY 7-1-1).

**Report of All Selected Parcels****Case Number:**

RQR-63628

**Printed On:** Thu: June 2, 2016

<u>Owner</u>	<u>Address</u>	<u>Parcel Number</u>
100 10TH STREET L L C	P O BOX 1570 LAS VEGAS NV 89125	13934612076
100 10TH STREET L L C	P O BOX 1570 LAS VEGAS NV 89125	13934612077
1000 FREMONT L L C	P O BOX 1570 LAS VEGAS NV 89125	13934612080
1004 OGDEN L L C	P O BOX 1570 LAS VEGAS NV 89125	13935211121
1028 FREMONT L L C	P O BOX 1570 LAS VEGAS NV 89125	13935201004
109 9TH STREET L L C	P O BOX 1570 LAS VEGAS NV 89125	13934612054
110 8TH STREET L L C	P O BOX 1570 LAS VEGAS NV 89125	13934612033
110 8TH STREET L L C	P O BOX 1570 LAS VEGAS NV 89125	13934612034
110 8TH STREET L L C	P O BOX 7516 LAS VEGAS NV 89125	13934612017
110 8TH STREET L L C	P O BOX 1570 LAS VEGAS NV 89125	13934612032
110 8TH STREET L L C	P O BOX 7516 LAS VEGAS NV 89125	13934612018
110 8TH STREET L L C	P O BOX 1570 LAS VEGAS NV 89125-1570	13934612030
110 8TH STREET L L C	P O BOX 1570 LAS VEGAS NV 89125	13934612014
110 8TH STREET L L C	P O BOX 1570 LAS VEGAS NV 89125	13934612031
110 8TH STREET L L C	P O BOX 7516 LAS VEGAS NV 89125	13934612009
110 8TH STREET L L C	P O BOX 1570 LAS VEGAS NV 89125	13934612013
1100 FREMONT L L C	P O BOX 1570 LAS VEGAS NV 89140	13935211057
111 9TH STREET L L C	P O BOX 1570 LAS VEGAS NV 89125	13934612053
1111 FREMONT L L C	1333 N BUFFALO DR #120 LAS VEGAS NV 89128	13935310001
1111 FREMONT L L C	1333 N BUFFALO DR #120 LAS VEGAS NV 89128	13935211056
112 MARYLAND PKWY L L C	P O BOX 1570 LAS VEGAS NV 89125	13935310007
112 MARYLAND PKWY L L C	P O BOX 1570 LAS VEGAS NV 89125	13935310008
112 MARYLAND PKWY L L C	P O BOX 1570 LAS VEGAS NV 89125	13935211081
1121 OGDEN STREET L L C	P O BOX 1570 LAS VEGAS NV 89140	13935211060
113 13TH STREET L L C	P O BOX 1570 LAS VEGAS NV 89125	13935310025
113 13TH STREET L L C	P O BOX 1570 LAS VEGAS NV 89125	13935310024
113 13TH STREET L L C	P O BOX 1570 LAS VEGAS NV 89125	13935310022
113 13TH STREET L L C	P O BOX 1570 LAS VEGAS NV 89125	13935310023
113 13TH STREET L L C	P O BOX 1570 LAS VEGAS NV 89125	13935211082
116 10TH STREET L L C	P O BOX 1570 LAS VEGAS NV 89125	13934712035
116 10TH STREET L L C	P O BOX 1570 LAS VEGAS NV 89125	13934712036
117 9TH STREET L L C	P O BOX 29269 LAS VEGAS NV 89126	13934612052

**Report of All Selected Parcels****Case Number:**

RQR-63628

**Printed On:** Thu: June 2, 2016

<u>Owner</u>	<u>Address</u>	<u>Parcel Number</u>
117 MARYLAND PKWY L L C	P O BOX 1570 LAS VEGAS NV 89140	13935211059
117 MARYLAND PKWY L L C	P O BOX 1570 LAS VEGAS NV 89140	13935211058
11TH STREET L P	328 N 11TH ST LAS VEGAS NV 89101-3121	13935201001
11TH STREET TAVERN L L C	P O BOX 1570 LAS VEGAS NV 89125	13934715001
120 6TH STREET L L C	P O BOX 1570 LAS VEGAS NV 89125	13934611052
1200 FREMONT L L C	P O BOX 1570 LAS VEGAS NV 89125	13935310021
1200 FREMONT L L C	P O BOX 1570 LAS VEGAS NV 89125	13935310009
1200 FREMONT L L C	P O BOX 1570 LAS VEGAS NV 89125	13935310010
1200 FREMONT L L C	P O BOX 1570 LAS VEGAS NV 89125	13935310020
123 10TH STREET L L C	P O BOX 1570 LAS VEGAS NV 89125	13935211022
123 10TH STREET L L C	P O BOX 1570 LAS VEGAS NV 89125	13934612081
128 7TH STREET L L C	P O BOX 1570 LAS VEGAS NV 89125	13934611021
128 7TH STREET L L C	P O BOX 7516 LAS VEGAS NV 89125	13934611023
128 7TH STREET L L C	P O BOX 1570 LAS VEGAS NV 89125	13934611022
130 11TH ST L L C	P O BOX 1570 LAS VEGAS NV 89125	13935211027
131 11TH STREET L L C	300 LAS VEGAS BLVD N LAS VEGAS NV 89101	13935211055
13STREET LIMITED PARTNERSHIP	29-26 163RD ST FLUSHING NY 11358-1424	13935211085
13TH STREET LIMITED PARTNERSHIP	29-26 163RD ST FLUSHING NY 11358-1424	13935211083
200 6TH STREET L L C	P O BOX 1570 LAS VEGAS NV 89125	13934611038
201 VEGAS D P L L C	SOLARIUM ENTERPRISES L P 9320 WILSHIRE BLVD #306 BEVERLY HILLS CA 90212	13934611042
202 11TH STREET L L C	P O BOX 1570 LAS VEGAS NV 89125	13934712083
208 10TH STREET L L C	P O BOX 1570 LAS VEGAS NV 89125	13934612073
208 LAS VEGAS BLVD L L C	P O BOX 1570 LAS VEGAS NV 89125-1570	13934511004
208 LAS VEGAS BLVD L L C	P O BOX 1570 LAS VEGAS NV 89125-1570	13934511010
208 LAS VEGAS BLVD L L C	P O BOX 1570 LAS VEGAS NV 89125-1570	13934501016
208 LAS VEGAS BLVD L L C	P O BOX 1570 LAS VEGAS NV 89125-1570	13934512007
208 LAS VEGAS BLVD L L C	P O BOX 1570 LAS VEGAS NV 89125-1570	13934512006
209 7TH STREET L L C	P O BOX 1570 LAS VEGAS NV 89125-1570	13934612002
209 7TH STREET L L C	P O BOX 1570 LAS VEGAS NV 89125-1570	13934612001
209 7TH STREET L L C	P O BOX 1570 LAS VEGAS NV 89125-1570	13934512029
210 8TH STREET L L C	P O BOX 1570 LAS VEGAS NV 89125-1570	13934710052
210 8TH STREET L L C	P O BOX 1570 LAS VEGAS NV 89125-1570	13934710053

**Report of All Selected Parcels**

Case Number:

RQR-63628

Printed On: Thu: June 2, 2016

<u>Owner</u>	<u>Address</u>	<u>Parcel Number</u>
210 8TH STREET L L C	P O BOX 1570 LAS VEGAS NV 89125-1570	13934611025
215 9TH ST L L C	P O BOX 1570 LAS VEGAS NV 89125	13934712029
217 L V B L L C	P O BOX 1570 LAS VEGAS NV 89125	13934515002
217 L V B L L C	P O BOX 1570 LAS VEGAS NV 89125	13934515005
220 8TH STREET L L C	P O BOX 1570 LAS VEGAS NV 89125	13934612012
221 8TH STREET L L C	1333 N BUFFALO DR #120 LAS VEGAS NV 89128	13934612037
221 8TH STREET L L C	1333 N BUFFALO DR #120 LAS VEGAS NV 89128	13934612036
223 N 9TH STREET L L C	82 OCEAN HARBOUR LN LAS VEGAS NV 89148	13934612043
230 8TH STREET LLC	P O BOX 1570 LAS VEGAS NV 89140	13934612011
401 7TH STREET L L C	P O BOX 1570 LAS VEGAS NV 89101	13934512049
515 FREMONT L L C	P O BOX 1570 LAS VEGAS NV 89125-1570	13934611015
612 CARSON L L C	P O BOX 1570 LAS VEGAS NV 89125	13934611024
701 BRIDGER L L C	300 LAS VEGAS BLVD N LAS VEGAS NV 89101-2942	13934710059
707 FREMONT L L C	P O BOX 1570 LAS VEGAS NV 89125-1570	13934601007
713 OGDEN L L C	1333 N BUFFALO DR #120 LAS VEGAS NV 89128	13934612015
713 OGDEN L L C	1333 N BUFFALO DR #120 LAS VEGAS NV 89128	13934612016
7-ELEVEN INC	P O BOX 711 DALLAS TX 75221-0711	13935211092
7TH STREET PROPERTIES L L C	1013 WHITNEY RANCH DR #110 HENDERSON NV 89014-3209	13934601005
800 FREMONT L L C	P O BOX 1570 LAS VEGAS NV 89125	13934612029
820 FREMONT STREET L L C	P O BOX 1570 LAS VEGAS NV 89125	13934612055
899 FREMONT L L C	P O BOX 1570 LAS VEGAS NV 89125	13934612028
899 FREMONT L L C	P O BOX 1570 LAS VEGAS NV 89125	13934612056
899 FREMONT L L C	P O BOX 1570 LAS VEGAS NV 89125	13934612026
899 FREMONT L L C	P O BOX 1570 LAS VEGAS NV 89125	13934612027
8TH STREET HOLDINGS L L C	21777 HOOVER RD WARREN MI 48089-2544	13934512080
8TH STREET HOLDINGS L L C	21777 HOOVER RD WARREN MI 48089-2544	13934512081
8TH STREET HOLDINGS L L C	21777 HOOVER RD WARREN MI 48089-2544	13934512079
900 FREMONT L L C	300 LAS VEGAS BLVD NORTH LAS VEGAS NV 89101-2942	13934601008
901 BRIDGER L L C	P O BOX 1570 LAS VEGAS NV 89125	13934712068
901 FREMONT L L C	P O BOX 1570 LAS VEGAS NV 89125	13934601012
906 CARSON L L C	P O BOX 1570 LAS VEGAS NV 89125	13934712037
A M W PROPERTIES L L C	7470 COMMERCIAL WAY HENDERSON NV 89011	13934612042

**Report of All Selected Parcels**

Case Number:

RQR-63628

Printed On: Thu: June 2, 2016

<u>Owner</u>	<u>Address</u>	<u>Parcel Number</u>
A T & T COMMUNICATIONS NV INC	600 E GREEN ST #300 PASADENA ca 91101	13934611053
AKIONA NICHOLAS K	LANDICE TRAVIS DANIEL 117 S 11TH ST LAS VEGAS NV 89101	13934714001
AKIONA NICHOLAS P K	1106 CARSON AVE LAS VEGAS NV 89101-5300	13934714007
ALBISER JUDY & BRIAN LIV TR 2005	ALBISER BRIAN & JUDY TRS 805 SHETLAND RD LAS VEGAS NV 89107-4519	13935211074
ALBISER JUDY & BRIAN LIV TR 2005	ALBISER BRIAN & JUDY TRS 805 SHETLAND RD LAS VEGAS NV 89107-4519	13935211073
AMARGOSA GIL L L C	8251 WINDSOR CREST CT LAS VEGAS NV 89123-2224	13935211035
AMARGOSA GILL L L C	8251 WINDSOR CREST LAS VEGAS NV 89123-2224	13935211036
AMISTAD CRISTIANA	4152 RIDGECREST DR LAS VEGAS NV 89121-4928	13934612068
AMISTAD CRISTIANA INC	901 E STEWART LAS VEGAS NV 89101-4223	13935211003
ANDREWS JOHN ELIAS LIVING TRUST	ANDREWS JOHN E TRS 8022 S RAINBOW BLVD #343 LAS VEGAS NV 89139	13934613114
ANDREWS JOHN ELIAS LIVING TRUST	ANDREWS JOHN E TRS 8022 S RAINBOW BLVD #343 LAS VEGAS NV 89139	13934613111
ANGUIANO JESUS & OBDULIA	325 N 11TH ST LAS VEGAS NV 89101-3144	13935211039
ANNEX L V BLVD L L C	P O BOX 1570 LAS VEGAS NV 89125-1570	13934501021
AQUILINE INVESTMENTS L L C	9500 HILLWOOD DR #110 LAS VEGAS NV 89134	13934512075
ARGIER MICHAEL V	10848 MILBANK AVE LAS VEGAS NV 89135	13935211109
ARGIER MICHAEL V	4675 OHIO ST #8 SAN DIEGO CA 92116	13935211108
ATCHESON GEORGE STEWART 2006 REV	ATCHESON GEORGE STEWART TRS 405 27TH ST SAN DIEGO CA 92102	13934613007
AUSTIN LINDA	P O BOX 19425 JEAN NV 89019	13935110018
AUSTIN LINDA	P O BOX 19425 JEAN NV 89019-9425	13934512090
BAPTIST MISSION TO ENGLAND INC	P O BOX 16217 TALLAHASSE FL 32317-6217	13934612061
BARE ROB	150 N LAS VEGAS BLVD LAS VEGAS NV 89101	13934613169
BECKER MICHAEL	150 N LAS VEGAS BLVD #1905 LAS VEGAS NV 89101	13934613180
BECKERMAN DAVID ISRAEL	GENERAL DELIVERY HOLLOMAN AIR FORCE BASE NM 8833 0	13934613125
BLAKE CHERYL J	404 1ST CHENEY WA 99004	13934613202
BLUE ELEPHANT L L L P	2500 W SAHARA AVE #211 LAS VEGAS NV 89102	13935210018
BLUE ELEPHANT L L L P	2500 W SAHARA AVE #211 LAS VEGAS NV 89102	13935210016
BLUE ELEPHANT L L L P	2500 W SAHARA AVE #211 LAS VEGAS NV 89102	13935210017
BLUE ELEPHANT L L L P	2500 W SAHARA AVE #211 LAS VEGAS NV 89102	13935210026
BLUE ELEPHANT L L L P	2500 W SAHARA AVE #211 LAS VEGAS NV 89102	13935210030
BLUE ELEPHANT L L L P	2500 W SAHARA AVE #211 LAS VEGAS NV 89102	13935210031
BLUE ELEPHANT L L L P	2500 W SAHARA AVE #211 LAS VEGAS NV 89102	13935210034
BLUE ELEPHANT L L L P	2500 W SAHARA AVE #211 LAS VEGAS NV 89102	13935210029

**Report of All Selected Parcels****Case Number:**

RQR-63628

**Printed On:** Thu: June 2, 2016

<u>Owner</u>	<u>Address</u>	<u>Parcel Number</u>
BLUE ELEPHANT L L L P	2500 W SAHARA AVE #211 LAS VEGAS NV 89102	13935210028
BLUE ELEPHANT L L L P	2500 W SAHARA AVE #211 LAS VEGAS NV 89102	13935210025
BLUE ELEPHANT L L L P	2500 W SAHARA AVE #211 LAS VEGAS NV 89102	13935210032
BLUE ELEPHANT L L L P	2500 W SAHARA AVE #211 LAS VEGAS NV 89102	13935210019
BLUE ELEPHANT L L L P	2500 W SAHARA AVE #211 LAS VEGAS NV 89102	13935210024
BLUE ELEPHANT L L L P	2500 W SAHARA AVE #211 LAS VEGAS NV 89102	13935210023
BLUE ELEPHANT L L L P	2500 W SAHARA AVE #211 LAS VEGAS NV 89102	13935210022
BLUE ELEPHANT L L L P	2500 W SAHARA AVE #211 LAS VEGAS NV 89102	13935210021
BLUE ELEPHANT L L L P	2500 W SAHARA AVE #211 LAS VEGAS NV 89102	13935210020
BLUE ELEPHANT L L L P	2500 W SAHARA AVE #211 LAS VEGAS NV 89102	13935210033
BLUE ELEPHANT L L L P	2500 W SAHARA AVE #211 LAS VEGAS NV 89102	13935210027
BLUE ELEPHANT L L L P	2500 W SAHARA AVE #211 LAS VEGAS NV 89102	13935210003
BLUE ELEPHANT L L L P	2500 W SAHARA AVE #211 LAS VEGAS NV 89102	13935210005
BLUE ELEPHANT L L L P	2500 W SAHARA AVE #211 LAS VEGAS NV 89102	13935210015
BLUE ELEPHANT L L L P	2500 W SAHARA AVE #211 LAS VEGAS NV 89102	13935210010
BLUE ELEPHANT L L L P	2500 W SAHARA AVE #211 LAS VEGAS NV 89102	13935210011
BLUE ELEPHANT L L L P	2500 W SAHARA AVE #211 LAS VEGAS NV 89102	13935210012
BLUE ELEPHANT L L L P	2500 W SAHARA AVE #211 LAS VEGAS NV 89102	13935210008
BLUE ELEPHANT L L L P	2500 W SAHARA AVE #211 LAS VEGAS NV 89102	13935210007
BLUE ELEPHANT L L L P	2500 W SAHARA AVE #211 LAS VEGAS NV 89102	13935210006
BLUE ELEPHANT L L L P	2500 W SAHARA AVE #211 LAS VEGAS NV 89102	13935210004
BLUE ELEPHANT L L L P	2500 W SAHARA AVE #211 LAS VEGAS NV 89102	13935210013
BLUE ELEPHANT L L L P	2500 W SAHARA AVE #211 LAS VEGAS NV 89102	13935210001
BLUE ELEPHANT L L L P	2500 W SAHARA AVE #211 LAS VEGAS NV 89102	13935210009
BLUE ELEPHANT L L L P	2500 W SAHARA AVE #211 LAS VEGAS NV 89102	13935210014
BLUE ELEPHANT L L L P	2500 W SAHARA AVE #211 LAS VEGAS NV 89102	13935210002
BORDISSO LOU ANTHONY LIVING TRUS	BORDISSO LOU ANTHONY TRS 701 OSCAR ST VALLEJO CA 94592	13934613059
BRACY JAMES JR & ELIZABETH F	330 N 9TH ST LAS VEGAS NV 89101-3033	13935112001
BRADY MATHEW	P O BOX 50791 HENDERSON NV 89016-0791	13934714004
BRISCOE DONALD L & MARGARET L	3815 REMOUNT DR LAS VEGAS NV 89121-4448	13934612040
C D L V L L C	3235 ROSANNA ST LAS VEGAS NV 89117-3137	13934612072
C K ENTERPRISES L L C	1256 ANNAPOLIS WY GRAYSON GA 30017-2900	13934613131

**Report of All Selected Parcels****Case Number:**

RQR-63628

**Printed On:** Thu: June 2, 2016

<u>Owner</u>	<u>Address</u>	<u>Parcel Number</u>
C Y S OHANA TRUST	SHANKMAN CRAIG MICHAEL TRS 19 CARSON CARSON CA 92620	13934613239
CANIZALES BLANCA	329 1/2 N 8TH ST LAS VEGAS NV 89101-3014	13934512064
CANOWA SUB 2 L L C	6675 WEATHER VIEW DR LAS VEGAS NV 89110-4019	13934712026
CANOWA SUB 2 L L C	6675 WEATHER VIEW DR LAS VEGAS NV 89110-4019	13934712027
CANOWA SUB 2 L L C	6675 WEATHER VIEW DR LAS VEGAS NV 89110-4019	13934712028
CARSON AVENUE PARTNERS L L C	P O BOX 18119 LONG BEACH CA 90807-8119	13934611026
CARSON AVENUE PARTNERS L L C	P O BOX 18119 LONG BEACH CA 90807-8119	13934611027
CARSON AVENUE PARTNERS L L C	P O BOX 18119 LONG BEACH CA 90807-8119	13934611028
CARSON AVENUE PARTNERS L L C	P O BOX 18119 LONG BEACH CA 90807-8119	13934710036
CARUSO JOSEPH J	150 N LAS VEGAS BLVD #2004 LAS VEGAS NV 89101	13934613197
CASTANEDA JUAN	LEYVA MANUEL 220 N MARYLAND PKWY LAS VEGAS NV 89101-4324	13935211077
CASTANEDA JUAN	AYALA ERASMO 220 N MARYLAND PKWY LAS VEGAS NV 89101-4324	13935211078
CASTRO LAURA SILVA	437 N 10TH ST LAS VEGAS NV 89101	13935110020
CATHOLIC CHARITIES SOUTHERN NV	1501 LAS VEGAS BLVD N LAS VEGAS NV 89101-1120	13934512089
CAVALCANTI FERNANDO ANTONIO PESS	150 N LAS VEGAS BLVD #1003 LAS VEGAS NV 89101	13934613043
CENTRAL TELEPHONE CO	P O BOX 2599 OLATHE KS 66063	13934611055
CERNA EVODIO CARRILLO	204 S 11TH ST LAS VEGAS NV 89101-5525	13934712084
CERRITO B D L L C	P O BOX 59 BLUE DIAMOND NV 89004-0059	13935211053
CERRITO B D L L C	P O BOX 59 BLUE DIAMOND NV 89004-0059	13935211054
CHALOUPKA WILLIAM JOHN	1142 E CARSON AVE LAS VEGAS NV 89101-5360	13935317008
CHOU VICTOR & MARY D	2359 ELEVADO RD VISTA CA 92084-2847	13935310004
CHURCH FIRST UNIVERSAL	901 E OGDEN AVE LAS VEGAS NV 89101-4234	13934612062
CHURCH LA LUZ DEL MUNDO	2413 E CEDAR AVE LAS VEGAS NV 89101-3410	13935211017
CHURCH SAINT JOSEPH CATHOLIC	131 N 9TH ST LAS VEGAS NV 89101-4225	13934612050
CHURCH ST JOSEPH CATHOLIC INC	131 N 9TH ST LAS VEGAS NV 89101-4225	13934612035
CHURCH ST JOSEPH CATHOLIC INC	131 N 9TH ST LAS VEGAS NV 89101	13934612049
CITY HALL L L C	P O BOX 1570 LAS VEGAS NV 89125-1570	13934501020
CITY HALL L L C	P O BOX 1570 LAS VEGAS NV 89125-1570	13934501003
CITY OF LAS VEGAS	495 S MAIN ST 6TH FL LAS VEGAS NV 89101-6318	13934512100
CITY OF LAS VEGAS	495 S MAIN ST 6TH FL LAS VEGAS NV 89101-6318	13934501019
CITY OF LAS VEGAS	495 S MAIN ST 6TH FL LAS VEGAS NV 89101-6318	13934512022
CITY OF LAS VEGAS	495 S MAIN ST 6TH FL LAS VEGAS NV 89101-6318	13934512034

**Report of All Selected Parcels**

Case Number:

RQR-63628

Printed On: Thu: June 2, 2016

<u>Owner</u>	<u>Address</u>	<u>Parcel Number</u>
CITY OF LAS VEGAS	495 S MAIN ST 6TH FLR LAS VEGAS NV 89101	13934512102
CITY OF LAS VEGAS	495 S MAIN ST 6TH FL LAS VEGAS NV 89101-6318	13934512011
CITY OF LAS VEGAS	400 STEWART AVE 2ND FLR LAS VEGAS NV 89101-2913	13934512050
CITY OF LAS VEGAS	495 S MAIN ST 6TH FL LAS VEGAS NV 89101-6318	13934512035
CITY OF LAS VEGAS	495 S MAIN ST 6TH FL LAS VEGAS NV 89101-6318	13934512036
CITY OF LAS VEGAS	495 S MAIN ST 6TH FL LAS VEGAS NV 89101-6318	13934512037
CITY OF LAS VEGAS	495 S MAIN ST 6TH FL LAS VEGAS NV 89101-6318	13934512025
CITY OF LAS VEGAS	495 S MAIN ST 6TH FL LAS VEGAS NV 89101-6318	13934512053
CITY OF LAS VEGAS	495 S MAIN ST 6TH FL LAS VEGAS NV 89101-6318	13934512014
CITY OF LAS VEGAS	495 S MAIN ST 6TH FL LAS VEGAS NV 89101-6318	13934512024
CITY OF LAS VEGAS	495 S MAIN ST 6TH FL LAS VEGAS NV 89101-6318	13934611018
CITY OF LAS VEGAS	333 N RANCHO DR 8TH FL LAS VEGAS NV 89106-3703	13934512001
CITY OF LAS VEGAS	495 S MAIN ST 6TH FL LAS VEGAS NV 89101-6318	13934512052
CITY OF LAS VEGAS	400 STEWART AVE LAS VEGAS NV 89101-2913	13934512020
CITY OF LAS VEGAS	495 S MAIN ST 6TH FL LAS VEGAS NV 89101-6318	13934512055
CITY OF LAS VEGAS	495 S MAIN ST 6TH FL LAS VEGAS NV 89101-6318	13934512039
CITY OF LAS VEGAS	495 S MAIN ST 6TH FL LAS VEGAS NV 89101-6318	13934512013
CITY OF LAS VEGAS	495 S MAIN ST 6TH FL LAS VEGAS NV 89101-6318	13934512099
CITY OF LAS VEGAS	495 S MAIN ST 6TH FL LAS VEGAS NV 89101-6318	13934512018
CITY OF LAS VEGAS	495 S MAIN ST 6TH FL LAS VEGAS NV 89101-6318	13934512048
CITY OF LAS VEGAS	495 S MAIN ST 6TH FL LAS VEGAS NV 89101-6318	13934512012
CITY OF LAS VEGAS	495 S MAIN ST 6TH FL LAS VEGAS NV 89101-6318	13934512021
CITY OF LAS VEGAS	495 S MAIN ST 6TH FL LAS VEGAS NV 89101-6318	13934512019
CITY OF LAS VEGAS	495 S MAIN ST 6TH FL LAS VEGAS NV 89101-6318	13934512008
CITY OF LAS VEGAS	495 S MAIN ST 6TH FL LAS VEGAS NV 89101-6318	13934512056
CITY OF LAS VEGAS	495 S MAIN ST 6TH FL LAS VEGAS NV 89101-6318	13934512010
CITY OF LAS VEGAS	495 S MAIN ST 6TH FL LAS VEGAS NV 89101-6318	13934512023
CITY OF LAS VEGAS	495 S MAIN ST 6TH FL LAS VEGAS NV 89101-6318	13934512009
CITY OF LAS VEGAS	495 S MAIN ST 6TH FL LAS VEGAS NV 89101-6318	13934512051
CITY OF LAS VEGAS	495 S MAIN ST 6TH FL LAS VEGAS NV 89101-6318	13934512038
CITY OF LAS VEGAS	495 S MAIN ST 6TH FL LAS VEGAS NV 89101-6318	13934512015
CITY OF LAS VEGAS REDEVELOPMENT	%ECONOMIC & URBAN DEVELOPMENT ED 495 S MAIN ST 6TH FL LAS VEGAS NV 89101	13934513003

**Report of All Selected Parcels**

Case Number:

RQR-63628

Printed On: Thu: June 2, 2016

<u>Owner</u>	<u>Address</u>	<u>Parcel Numbe</u>
CITY OF LAS VEGAS REDEVELOPMENT	425 FREMONT ST LAS VEGAS NV 89101-5620	13934111064
CITY OF LAS VEGAS REDEVELOPMENT	495 S MAIN ST 6TH FL LAS VEGAS NV 89101	13934513003
CORNTHWAITE SHARON M & MICHAEL T	557 E BONITA AVE LAS VEGAS NV 89104-2803	13935317003
CORRAL JUAN MANUEL & EVA	436 N 9TH ST LAS VEGAS NV 89101-3035	13935110010
CRANE NANCY C & GARY G	FRANKLIN SEVE K 1112 ROBERT DR GODFREY IL 62035	13935110011
CRANE NANCY C & GARY G	FRANKLIN STEVEN K 1112 ROBERT DR GODFREY IL 62035	13934512094
CROCE DANIEL	P O BOX #67 LAS VEGAS NV 89125-0067	13934714006
CUARESMA-PRIMM KRISTOPHER	PEDROSO JASMINE 150 N LAS VEGAS BLVD #2313 LAS VEGAS NV 89101	13934613260
CURACAO SHATZ L L C	LEAVITT ANDREW M & PATRICIA TRS 633 S 7TH ST LAS VEGAS NV 89101-6905	13934712069
CUTLER BRIAN	502 N 7TH ST LAS VEGAS NV 89101	13934512070
D K OGDEN L L C	%KRE CAPITAL LLC~%M KHOURY 315 S BEVERLY DR #201 BEVERLY HILLS CA 90212	13934613120
D K OGDEN L L C	%KRE CAPITAL LLC~%M KHOURY 315 S BEVERLY DR #201 BEVERLY HILLS CA 90212	13934613121
D K OGDEN L L C	%KRE CAPITAL LLC~%M KHOURY 315 S BEVERLY DR #201 BEVERLY HILLS CA 90212	13934613199
D K OGDEN L L C	%KRE CAPITAL LLC~%M KHOURY 315 S BEVERLY DR #201 BEVERLY HILLS CA 90212	13934613236
D K OGDEN L L C	%KRE CAPITAL LLC~%M KHOURY 315 S BEVERLY DR #201 BEVERLY HILLS CA 90212	13934613235
D K OGDEN L L C	%KRE CAPITAL LLC~%M KHOURY 315 S BEVERLY DR #201 BEVERLY HILLS CA 90212	13934613133
D K OGDEN L L C	%KRE CAPITAL LLC~%M KHOURY 315 S BEVERLY DR #201 BEVERLY HILLS CA 90212	13934613132
D K OGDEN L L C	%KRE CAPITAL LLC~%M KHOURY 315 S BEVERLY DR #201 BEVERLY HILLS CA 90212	13934613124
D K OGDEN L L C	%KRE CAPITAL LLC~%M KHOURY 315 S BEVERLY DR #201 BEVERLY HILLS CA 90212	13934613129
D K OGDEN L L C	%KRE CAPITAL LLC~%M KHOURY 315 S BEVERLY DR #201 BEVERLY HILLS CA 90212	13934613232
D K OGDEN L L C	%KRE CAPITAL LLC~%M KHOURY 315 S BEVERLY DR #201 BEVERLY HILLS CA 90212	13934613234
D K OGDEN L L C	%KRE CAPITAL LLC~%M KHOURY 315 S BEVERLY DR #201 BEVERLY HILLS CA 90212	13934613237
D K OGDEN L L C	%KRE CAPITAL LLC~%M KHOURY 315 S BEVERLY DR #201 BEVERLY HILLS CA 90212	13934613128
D K OGDEN L L C	%KRE CAPITAL LLC~%M KHOURY 315 S BEVERLY DR #201 BEVERLY HILLS CA 90212	13934613242
D K OGDEN L L C	%KRE CAPITAL LLC~%M KHOURY 315 S BEVERLY DR #201 BEVERLY HILLS CA 90212	13934613126
D K OGDEN L L C	%KRE CAPITAL LLC~%M KHOURY 315 S BEVERLY DR #201 BEVERLY HILLS CA 90212	13934613127
D K OGDEN L L C	%KRE CAPITAL LLC~%M KHOURY 315 S BEVERLY DR #201 BEVERLY HILLS CA 90212	13934613231
D K OGDEN L L C	%KRE CAPITAL LLC~%M KHOURY 315 S BEVERLY DR #201 BEVERLY HILLS CA 90212	13934613200
D K OGDEN L L C	%KRE CAPITAL LLC~%M KHOURY 315 S BEVERLY DR #201 BEVERLY HILLS CA 90212	13934613123
D K OGDEN L L C	%KRE CAPITAL LLC~%M KHOURY 315 S BEVERLY DR #201 BEVERLY HILLS CA 90212	13934613110
D K OGDEN L L C	%KRE CAPITAL LLC~%M KHOURY 315 S BEVERLY DR #201 BEVERLY HILLS CA 90212	13934613103
D K OGDEN L L C	%KRE CAPITAL LLC~%M KHOURY 315 S BEVERLY DR #201 BEVERLY HILLS CA 90212	13934613252

**Report of All Selected Parcels**

Case Number:

RQR-63628

Printed On: Thu: June 2, 2016

<u>Owner</u>	<u>Address</u>	<u>Parcel Number</u>
D K OGDEN L L C	%KRE CAPITAL LLC~%M KHOURY 315 S BEVERLY DR #201 BEVERLY HILLS CA 90212	13934613105
D K OGDEN L L C	%KRE CAPITAL LLC~%M KHOURY 315 S BEVERLY DR #201 BEVERLY HILLS CA 90212	13934613251
D K OGDEN L L C	%KRE CAPITAL LLC~%M KHOURY 315 S BEVERLY DR #201 BEVERLY HILLS CA 90212	13934613250
D K OGDEN L L C	%KRE CAPITAL LLC~%M KHOURY 315 S BEVERLY DR #201 BEVERLY HILLS CA 90212	13934613188
D K OGDEN L L C	%KRE CAPITAL LLC~%M KHOURY 315 S BEVERLY DR #201 BEVERLY HILLS CA 90212	13934613249
D K OGDEN L L C	%KRE CAPITAL LLC~%M KHOURY 315 S BEVERLY DR #201 BEVERLY HILLS CA 90212	13934613248
D K OGDEN L L C	%KRE CAPITAL LLC~%M KHOURY 315 S BEVERLY DR #201 BEVERLY HILLS CA 90212	13934613107
D K OGDEN L L C	%KRE CAPITAL LLC~%M KHOURY 315 S BEVERLY DR #201 BEVERLY HILLS CA 90212	13934613247
D K OGDEN L L C	%KRE CAPITAL LLC~%M KHOURY 315 S BEVERLY DR #201 BEVERLY HILLS CA 90212	13934613181
D K OGDEN L L C	%KRE CAPITAL LLC~%M KHOURY 315 S BEVERLY DR #201 BEVERLY HILLS CA 90212	13934613245
D K OGDEN L L C	%KRE CAPITAL LLC~%M KHOURY 315 S BEVERLY DR #201 BEVERLY HILLS CA 90212	13934613119
D K OGDEN L L C	%KRE CAPITAL LLC~%M KHOURY 315 S BEVERLY DR #201 BEVERLY HILLS CA 90212	13934613187
D K OGDEN L L C	%KRE CAPITAL LLC~%M KHOURY 315 S BEVERLY DR #201 BEVERLY HILLS CA 90212	13934613243
D K OGDEN L L C	%KRE CAPITAL LLC~%M KHOURY 315 S BEVERLY DR #201 BEVERLY HILLS CA 90212	13934613173
D K OGDEN L L C	%KRE CAPITAL LLC~%M KHOURY 315 S BEVERLY DR #201 BEVERLY HILLS CA 90212	13934613115
D K OGDEN L L C	%KRE CAPITAL LLC~%M KHOURY 315 S BEVERLY DR #201 BEVERLY HILLS CA 90212	13934613116
D K OGDEN L L C	%KRE CAPITAL LLC~%M KHOURY 315 S BEVERLY DR #201 BEVERLY HILLS CA 90212	13934613198
D K OGDEN L L C	%KRE CAPITAL LLC~%M KHOURY 315 S BEVERLY DR #201 BEVERLY HILLS CA 90212	13934613183
D K OGDEN L L C	%KRE CAPITAL LLC~%M KHOURY 315 S BEVERLY DR #201 BEVERLY HILLS CA 90212	13934613117
D K OGDEN L L C	%KRE CAPITAL LLC~%M KHOURY 315 S BEVERLY DR #201 BEVERLY HILLS CA 90212	13934613241
D K OGDEN L L C	%KRE CAPITAL LLC~%M KHOURY 315 S BEVERLY DR #201 BEVERLY HILLS CA 90212	13934613102
D K OGDEN L L C	%KRE CAPITAL LLC~%M KHOURY 315 S BEVERLY DR #201 BEVERLY HILLS CA 90212	13934613108
D K OGDEN L L C	%KRE CAPITAL LLC~%M KHOURY 315 S BEVERLY DR #201 BEVERLY HILLS CA 90212	13934613215
D K OGDEN L L C	%KRE CAPITAL LLC~%M KHOURY 315 S BEVERLY DR #201 BEVERLY HILLS CA 90212	13934613218
D K OGDEN L L C	%KRE CAPITAL LLC~%M KHOURY 315 S BEVERLY DR #201 BEVERLY HILLS CA 90212	13934613153
D K OGDEN L L C	%KRE CAPITAL LLC~%M KHOURY 315 S BEVERLY DR #201 BEVERLY HILLS CA 90212	13934613207
D K OGDEN L L C	%KRE CAPITAL LLC~%M KHOURY 315 S BEVERLY DR #201 BEVERLY HILLS CA 90212	13934613154
D K OGDEN L L C	%KRE CAPITAL LLC~%M KHOURY 315 S BEVERLY DR #201 BEVERLY HILLS CA 90212	13934613217
D K OGDEN L L C	%KRE CAPITAL LLC~%M KHOURY 315 S BEVERLY DR #201 BEVERLY HILLS CA 90212	13934613155
D K OGDEN L L C	%KRE CAPITAL LLC~%M KHOURY 315 S BEVERLY DR #201 BEVERLY HILLS CA 90212	13934613157
D K OGDEN L L C	%KRE CAPITAL LLC~%M KHOURY 315 S BEVERLY DR #201 BEVERLY HILLS CA 90212	13934613158
D K OGDEN L L C	%KRE CAPITAL LLC~%M KHOURY 315 S BEVERLY DR #201 BEVERLY HILLS CA 90212	13934613159

**Report of All Selected Parcels**

**Case Number:**

RQR-63628

**Printed On:** Thu: June 2, 2016

<u>Owner</u>	<u>Address</u>	<u>Parcel Numbe</u>
D K OGDEN L L C	%KRE CAPITAL LLC~%M KHOURY 315 S BEVERLY DR #201 BEVERLY HILLS CA 90212	13934613216
D K OGDEN L L C	%KRE CAPITAL LLC~%M KHOURY 315 S BEVERLY DR #201 BEVERLY HILLS CA 90212	13934613134
D K OGDEN L L C	%KRE CAPITAL LLC~%M KHOURY 315 S BEVERLY DR #201 BEVERLY HILLS CA 90212	13934613087
D K OGDEN L L C	%KRE CAPITAL LLC~%M KHOURY 315 S BEVERLY DR #201 BEVERLY HILLS CA 90212	13934613151
D K OGDEN L L C	%KRE CAPITAL LLC~%M KHOURY 315 S BEVERLY DR #201 BEVERLY HILLS CA 90212	13934613174
D K OGDEN L L C	%KRE CAPITAL LLC~%M KHOURY 315 S BEVERLY DR #201 BEVERLY HILLS CA 90212	13934613214
D K OGDEN L L C	%KRE CAPITAL LLC~%M KHOURY 315 S BEVERLY DR #201 BEVERLY HILLS CA 90212	13934613162
D K OGDEN L L C	%KRE CAPITAL LLC~%M KHOURY 315 S BEVERLY DR #201 BEVERLY HILLS CA 90212	13934613163
D K OGDEN L L C	%KRE CAPITAL LLC~%M KHOURY 315 S BEVERLY DR #201 BEVERLY HILLS CA 90212	13934613213
D K OGDEN L L C	%KRE CAPITAL LLC~%M KHOURY 315 S BEVERLY DR #201 BEVERLY HILLS CA 90212	13934613209
D K OGDEN L L C	%KRE CAPITAL LLC~%M KHOURY 315 S BEVERLY DR #201 BEVERLY HILLS CA 90212	13934613165
D K OGDEN L L C	%KRE CAPITAL LLC~%M KHOURY 315 S BEVERLY DR #201 BEVERLY HILLS CA 90212	13934613210
D K OGDEN L L C	%KRE CAPITAL LLC~%M KHOURY 315 S BEVERLY DR #201 BEVERLY HILLS CA 90212	13934613168
D K OGDEN L L C	%KRE CAPITAL LLC~%M KHOURY 315 S BEVERLY DR #201 BEVERLY HILLS CA 90212	13934613171
D K OGDEN L L C	%KRE CAPITAL LLC~%M KHOURY 315 S BEVERLY DR #201 BEVERLY HILLS CA 90212	13934613172
D K OGDEN L L C	%KRE CAPITAL LLC~%M KHOURY 315 S BEVERLY DR #201 BEVERLY HILLS CA 90212	13934613160
D K OGDEN L L C	%KRE CAPITAL LLC~%M KHOURY 315 S BEVERLY DR #201 BEVERLY HILLS CA 90212	13934613141
D K OGDEN L L C	%KRE CAPITAL LLC~%M KHOURY 315 S BEVERLY DR #201 BEVERLY HILLS CA 90212	13934613195
D K OGDEN L L C	%KRE CAPITAL LLC~%M KHOURY 315 S BEVERLY DR #201 BEVERLY HILLS CA 90212	13934613135
D K OGDEN L L C	%KRE CAPITAL LLC~%M KHOURY 315 S BEVERLY DR #201 BEVERLY HILLS CA 90212	13934613137
D K OGDEN L L C	%KRE CAPITAL LLC~%M KHOURY 315 S BEVERLY DR #201 BEVERLY HILLS CA 90212	13934613138
D K OGDEN L L C	%KRE CAPITAL LLC~%M KHOURY 315 S BEVERLY DR #201 BEVERLY HILLS CA 90212	13934613201
D K OGDEN L L C	%KRE CAPITAL LLC~%M KHOURY 315 S BEVERLY DR #201 BEVERLY HILLS CA 90212	13934613139
D K OGDEN L L C	%KRE CAPITAL LLC~%M KHOURY 315 S BEVERLY DR #201 BEVERLY HILLS CA 90212	13934613230
D K OGDEN L L C	%KRE CAPITAL LLC~%M KHOURY 315 S BEVERLY DR #201 BEVERLY HILLS CA 90212	13934613229
D K OGDEN L L C	%KRE CAPITAL LLC~%M KHOURY 315 S BEVERLY DR #201 BEVERLY HILLS CA 90212	13934613140
D K OGDEN L L C	%KRE CAPITAL LLC~%M KHOURY 315 S BEVERLY DR #201 BEVERLY HILLS CA 90212	13934613228
D K OGDEN L L C	%KRE CAPITAL LLC~%M KHOURY 315 S BEVERLY DR #201 BEVERLY HILLS CA 90212	13934613227
D K OGDEN L L C	%KRE CAPITAL LLC~%M KHOURY 315 S BEVERLY DR #201 BEVERLY HILLS CA 90212	13934613205
D K OGDEN L L C	%KRE CAPITAL LLC~%M KHOURY 315 S BEVERLY DR #201 BEVERLY HILLS CA 90212	13934613224
D K OGDEN L L C	%KRE CAPITAL LLC~%M KHOURY 315 S BEVERLY DR #201 BEVERLY HILLS CA 90212	13934613219
D K OGDEN L L C	%KRE CAPITAL LLC~%M KHOURY 315 S BEVERLY DR #201 BEVERLY HILLS CA 90212	13934613142

**Report of All Selected Parcels**

Case Number:

RQR-63628

Printed On: Thu: June 2, 2016

<u>Owner</u>	<u>Address</u>	<u>Parcel Number</u>
D K OGDEN L L C	%KRE CAPITAL LLC~%M KHOURY 315 S BEVERLY DR #201 BEVERLY HILLS CA 90212	13934613143
D K OGDEN L L C	%KRE CAPITAL LLC~%M KHOURY 315 S BEVERLY DR #201 BEVERLY HILLS CA 90212	13934613223
D K OGDEN L L C	%KRE CAPITAL LLC~%M KHOURY 315 S BEVERLY DR #201 BEVERLY HILLS CA 90212	13934613222
D K OGDEN L L C	%KRE CAPITAL LLC~%M KHOURY 315 S BEVERLY DR #201 BEVERLY HILLS CA 90212	13934613144
D K OGDEN L L C	%KRE CAPITAL LLC~%M KHOURY 315 S BEVERLY DR #201 BEVERLY HILLS CA 90212	13934613145
D K OGDEN L L C	%KRE CAPITAL LLC~%M KHOURY 315 S BEVERLY DR #201 BEVERLY HILLS CA 90212	13934613146
D K OGDEN L L C	%KRE CAPITAL LLC~%M KHOURY 315 S BEVERLY DR #201 BEVERLY HILLS CA 90212	13934613147
D K OGDEN L L C	%KRE CAPITAL LLC~%M KHOURY 315 S BEVERLY DR #201 BEVERLY HILLS CA 90212	13934613204
D K OGDEN L L C	%KRE CAPITAL LLC~%M KHOURY 315 S BEVERLY DR #201 BEVERLY HILLS CA 90212	13934613150
D K OGDEN L L C	%KRE CAPITAL LLC~%M KHOURY 315 S BEVERLY DR #201 BEVERLY HILLS CA 90212	13934613177
D K OGDEN L L C	%KRE CAPITAL LLC~%M KHOURY 315 S BEVERLY DR #201 BEVERLY HILLS CA 90212	13934613225
D K OGDEN L L C	%KRE CAPITAL LLC~%M KHOURY 315 S BEVERLY DR #201 BEVERLY HILLS CA 90212	13934613024
D K OGDEN L L C	%KRE CAPITAL LLC~%M KHOURY 315 S BEVERLY DR #201 BEVERLY HILLS CA 90212	13934613033
D K OGDEN L L C	%KRE CAPITAL LLC~%M KHOURY 315 S BEVERLY DR #201 BEVERLY HILLS CA 90212	13934613032
D K OGDEN L L C	%KRE CAPITAL LLC~%M KHOURY 315 S BEVERLY DR #201 BEVERLY HILLS CA 90212	13934613031
D K OGDEN L L C	%KRE CAPITAL LLC~%M KHOURY 315 S BEVERLY DR #201 BEVERLY HILLS CA 90212	13934613030
D K OGDEN L L C	%KRE CAPITAL LLC~%M KHOURY 315 S BEVERLY DR #201 BEVERLY HILLS CA 90212	13934613272
D K OGDEN L L C	%KRE CAPITAL LLC~%M KHOURY 315 S BEVERLY DR #201 BEVERLY HILLS CA 90212	13934613029
D K OGDEN L L C	%KRE CAPITAL LLC~%M KHOURY 315 S BEVERLY DR #201 BEVERLY HILLS CA 90212	13934613189
D K OGDEN L L C	%KRE CAPITAL LLC~%M KHOURY 315 S BEVERLY DR #201 BEVERLY HILLS CA 90212	13934613264
D K OGDEN L L C	%KRE CAPITAL LLC~%M KHOURY 315 S BEVERLY DR #201 BEVERLY HILLS CA 90212	13934613026
D K OGDEN L L C	%KRE CAPITAL LLC~%M KHOURY 315 S BEVERLY DR #201 BEVERLY HILLS CA 90212	13934613016
D K OGDEN L L C	%KRE CAPITAL LLC~%M KHOURY 315 S BEVERLY DR #201 BEVERLY HILLS CA 90212	13934613025
D K OGDEN L L C	%KRE CAPITAL LLC~%M KHOURY 315 S BEVERLY DR #201 BEVERLY HILLS CA 90212	13934613271
D K OGDEN L L C	%KRE CAPITAL LLC~%M KHOURY 315 S BEVERLY DR #201 BEVERLY HILLS CA 90212	13934613022
D K OGDEN L L C	%KRE CAPITAL LLC~%M KHOURY 315 S BEVERLY DR #201 BEVERLY HILLS CA 90212	13934613067
D K OGDEN L L C	%KRE CAPITAL LLC~%M KHOURY 315 S BEVERLY DR #201 BEVERLY HILLS CA 90212	13934613274
D K OGDEN L L C	%KRE CAPITAL LLC~%M KHOURY 315 S BEVERLY DR #201 BEVERLY HILLS CA 90212	13934613263
D K OGDEN L L C	%KRE CAPITAL LLC~%M KHOURY 315 S BEVERLY DR #201 BEVERLY HILLS CA 90212	13934613020
D K OGDEN L L C	%KRE CAPITAL LLC~%M KHOURY 315 S BEVERLY DR #201 BEVERLY HILLS CA 90212	13934613019
D K OGDEN L L C	%KRE CAPITAL LLC~%M KHOURY 315 S BEVERLY DR #201 BEVERLY HILLS CA 90212	13934613018
D K OGDEN L L C	%KRE CAPITAL LLC~%M KHOURY 315 S BEVERLY DR #201 BEVERLY HILLS CA 90212	13934613262

**Report of All Selected Parcels**

Case Number:

RQR-63628

Printed On: Thu: June 2, 2016

<u>Owner</u>	<u>Address</u>	<u>Parcel Numbe</u>
D K OGDEN L L C	%KRE CAPITAL LLC~%M KHOURY 315 S BEVERLY DR #201 BEVERLY HILLS CA 90212	13934613053
D K OGDEN L L C	%KRE CAPITAL LLC~%M KHOURY 315 S BEVERLY DR #201 BEVERLY HILLS CA 90212	13934613064
D K OGDEN L L C	%KRE CAPITAL LLC~%M KHOURY 315 S BEVERLY DR #201 BEVERLY HILLS CA 90212	13934613268
D K OGDEN L L C	%KRE CAPITAL LLC~%M KHOURY 315 S BEVERLY DR #201 BEVERLY HILLS CA 90212	13934613052
D K OGDEN L L C	%KRE CAPITAL LLC~%M KHOURY 315 S BEVERLY DR #201 BEVERLY HILLS CA 90212	13934613051
D K OGDEN L L C	%KRE CAPITAL LLC~%M KHOURY 315 S BEVERLY DR #201 BEVERLY HILLS CA 90212	13934613054
D K OGDEN L L C	%KRE CAPITAL LLC~%M KHOURY 315 S BEVERLY DR #201 BEVERLY HILLS CA 90212	13934613056
D K OGDEN L L C	%KRE CAPITAL LLC~%M KHOURY 315 S BEVERLY DR #201 BEVERLY HILLS CA 90212	13934613049
D K OGDEN L L C	%KRE CAPITAL LLC~%M KHOURY 315 S BEVERLY DR #201 BEVERLY HILLS CA 90212	13934613048
D K OGDEN L L C	%KRE CAPITAL LLC~%M KHOURY 315 S BEVERLY DR #201 BEVERLY HILLS CA 90212	13934613047
D K OGDEN L L C	%KRE CAPITAL LLC~%M KHOURY 315 S BEVERLY DR #201 BEVERLY HILLS CA 90212	13934613057
D K OGDEN L L C	%KRE CAPITAL LLC~%M KHOURY 315 S BEVERLY DR #201 BEVERLY HILLS CA 90212	13934613046
D K OGDEN L L C	%KRE CAPITAL LLC~%M KHOURY 315 S BEVERLY DR #201 BEVERLY HILLS CA 90212	13934613265
D K OGDEN L L C	%KRE CAPITAL LLC~%M KHOURY 315 S BEVERLY DR #201 BEVERLY HILLS CA 90212	13934613044
D K OGDEN L L C	%KRE CAPITAL LLC~%M KHOURY 315 S BEVERLY DR #201 BEVERLY HILLS CA 90212	13934613035
D K OGDEN L L C	%KRE CAPITAL LLC~%M KHOURY 315 S BEVERLY DR #201 BEVERLY HILLS CA 90212	13934613042
D K OGDEN L L C	%KRE CAPITAL LLC~%M KHOURY 315 S BEVERLY DR #201 BEVERLY HILLS CA 90212	13934613058
D K OGDEN L L C	%KRE CAPITAL LLC~%M KHOURY 315 S BEVERLY DR #201 BEVERLY HILLS CA 90212	13934613191
D K OGDEN L L C	%KRE CAPITAL LLC~%M KHOURY 315 S BEVERLY DR #201 BEVERLY HILLS CA 90212	13934613266
D K OGDEN L L C	%KRE CAPITAL LLC~%M KHOURY 315 S BEVERLY DR #201 BEVERLY HILLS CA 90212	13934613038
D K OGDEN L L C	%KRE CAPITAL LLC~%M KHOURY 315 S BEVERLY DR #201 BEVERLY HILLS CA 90212	13934613037
D K OGDEN L L C	%KRE CAPITAL LLC~%M KHOURY 315 S BEVERLY DR #201 BEVERLY HILLS CA 90212	13934613196
D K OGDEN L L C	%KRE CAPITAL LLC~%M KHOURY 315 S BEVERLY DR #201 BEVERLY HILLS CA 90212	13934613088
D K OGDEN L L C	%KRE CAPITAL LLC~%M KHOURY 315 S BEVERLY DR #201 BEVERLY HILLS CA 90212	13934613253
D K OGDEN L L C	%KRE CAPITAL LLC~%M KHOURY 315 S BEVERLY DR #201 BEVERLY HILLS CA 90212	13934613070
D K OGDEN L L C	%KRE CAPITAL LLC~%M KHOURY 315 S BEVERLY DR #201 BEVERLY HILLS CA 90212	13934613045
D K OGDEN L L C	%KRE CAPITAL LLC~%M KHOURY 315 S BEVERLY DR #201 BEVERLY HILLS CA 90212	13934613084
D K OGDEN L L C	%KRE CAPITAL LLC~%M KHOURY 315 S BEVERLY DR #201 BEVERLY HILLS CA 90212	13934613275
D K OGDEN L L C	%KRE CAPITAL LLC~%M KHOURY 315 S BEVERLY DR #201 BEVERLY HILLS CA 90212	13934613092
D K OGDEN L L C	%KRE CAPITAL LLC~%M KHOURY 315 S BEVERLY DR #201 BEVERLY HILLS CA 90212	13934613093
D K OGDEN L L C	%KRE CAPITAL LLC~%M KHOURY 315 S BEVERLY DR #201 BEVERLY HILLS CA 90212	13934613080
D K OGDEN L L C	%KRE CAPITAL LLC~%M KHOURY 315 S BEVERLY DR #201 BEVERLY HILLS CA 90212	13934613094

**Report of All Selected Parcels**

Case Number:

RQR-63628

Printed On: Thu: June 2, 2016

<u>Owner</u>	<u>Address</u>	<u>Parcel Number</u>
D K OGDEN L L C	%NORTHCAP 815 PILOT RD #E LAS VEGAS NV 89119	13934613276
D K OGDEN L L C	%KRE CAPITAL LLC~%M KHOURY 315 S BEVERLY DR #201 BEVERLY HILLS CA 90212	13934613082
D K OGDEN L L C	%NORTHCAP 815 PILOT RD #E LAS VEGAS NV 89119	13934613277
D K OGDEN L L C	%KRE CAPITAL LLC~%M KHOURY 315 S BEVERLY DR #201 BEVERLY HILLS CA 90212	13934613192
D K OGDEN L L C	%KRE CAPITAL LLC~%M KHOURY 315 S BEVERLY DR #201 BEVERLY HILLS CA 90212	13934613079
D K OGDEN L L C	%KRE CAPITAL LLC~%M KHOURY 315 S BEVERLY DR #201 BEVERLY HILLS CA 90212	13934613258
D K OGDEN L L C	%KRE CAPITAL LLC~%M KHOURY 315 S BEVERLY DR #201 BEVERLY HILLS CA 90212	13934613001
D K OGDEN L L C	%KRE CAPITAL LLC~%M KHOURY 315 S BEVERLY DR #201 BEVERLY HILLS CA 90212	13934613095
D K OGDEN L L C	%KRE CAPITAL LLC~%M KHOURY 315 S BEVERLY DR #201 BEVERLY HILLS CA 90212	13934613085
D K OGDEN L L C	%KRE CAPITAL LLC~%M KHOURY 315 S BEVERLY DR #201 BEVERLY HILLS CA 90212	13934613096
D K OGDEN L L C	%KRE CAPITAL LLC~%M KHOURY 315 S BEVERLY DR #201 BEVERLY HILLS CA 90212	13934613193
D K OGDEN L L C	%KRE CAPITAL LLC~%M KHOURY 315 S BEVERLY DR #201 BEVERLY HILLS CA 90212	13934613257
D K OGDEN L L C	%KRE CAPITAL LLC~%M KHOURY 315 S BEVERLY DR #201 BEVERLY HILLS CA 90212	13934613097
D K OGDEN L L C	%KRE CAPITAL LLC~%M KHOURY 315 S BEVERLY DR #201 BEVERLY HILLS CA 90212	13934613086
D K OGDEN L L C	%KRE CAPITAL LLC~%M KHOURY 315 S BEVERLY DR #201 BEVERLY HILLS CA 90212	13934613099
D K OGDEN L L C	%KRE CAPITAL LLC~%M KHOURY 315 S BEVERLY DR #201 BEVERLY HILLS CA 90212	13934613254
D K OGDEN L L C	%KRE CAPITAL LLC~%M KHOURY 315 S BEVERLY DR #201 BEVERLY HILLS CA 90212	13934613101
D K OGDEN L L C	%KRE CAPITAL LLC~%M KHOURY 315 S BEVERLY DR #201 BEVERLY HILLS CA 90212	13934613259
D K OGDEN L L C	%KRE CAPITAL LLC~%M KHOURY 315 S BEVERLY DR #201 BEVERLY HILLS CA 90212	13934613074
D K OGDEN L L C	%KRE CAPITAL LLC~%M KHOURY 315 S BEVERLY DR #201 BEVERLY HILLS CA 90212	13934613071
D K OGDEN L L C	%KRE CAPITAL LLC~%M KHOURY 315 S BEVERLY DR #201 BEVERLY HILLS CA 90212	13934613012
D K OGDEN L L C	%KRE CAPITAL LLC~%M KHOURY 315 S BEVERLY DR #201 BEVERLY HILLS CA 90212	13934613011
D K OGDEN L L C	%KRE CAPITAL LLC~%M KHOURY 315 S BEVERLY DR #201 BEVERLY HILLS CA 90212	13934613010
D K OGDEN L L C	%KRE CAPITAL LLC~%M KHOURY 315 S BEVERLY DR #201 BEVERLY HILLS CA 90212	13934613009
D K OGDEN L L C	%KRE CAPITAL LLC~%M KHOURY 315 S BEVERLY DR #201 BEVERLY HILLS CA 90212	13934613072
D K OGDEN L L C	%KRE CAPITAL LLC~%M KHOURY 315 S BEVERLY DR #201 BEVERLY HILLS CA 90212	13934613008
D K OGDEN L L C	%KRE CAPITAL LLC~%M KHOURY 315 S BEVERLY DR #201 BEVERLY HILLS CA 90212	13934613261
D K OGDEN L L C	%KRE CAPITAL LLC~%M KHOURY 315 S BEVERLY DR #201 BEVERLY HILLS CA 90212	13934613073
D K OGDEN L L C	%KRE CAPITAL LLC~%M KHOURY 315 S BEVERLY DR #201 BEVERLY HILLS CA 90212	13934613036
D K OGDEN L L C	%KRE CAPITAL LLC~%M KHOURY 315 S BEVERLY DR #201 BEVERLY HILLS CA 90212	13934613075
D K OGDEN L L C	%KRE CAPITAL LLC~%M KHOURY 315 S BEVERLY DR #201 BEVERLY HILLS CA 90212	13934613076
D K OGDEN L L C	%KRE CAPITAL LLC~%M KHOURY 315 S BEVERLY DR #201 BEVERLY HILLS CA 90212	13934613077

**Report of All Selected Parcels****Case Number:**

RQR-63628

**Printed On:** Thu: June 2, 2016

<u>Owner</u>	<u>Address</u>	<u>Parcel Number</u>
D K OGDEN L L C	%KRE CAPITAL LLC~%M KHOURY 315 S BEVERLY DR #201 BEVERLY HILLS CA 90212	13934613006
D K OGDEN L L C	%KRE CAPITAL LLC~%M KHOURY 315 S BEVERLY DR #201 BEVERLY HILLS CA 90212	13934613005
D K OGDEN L L C	%KRE CAPITAL LLC~%M KHOURY 315 S BEVERLY DR #201 BEVERLY HILLS CA 90212	13934613004
D K OGDEN L L C	%KRE CAPITAL LLC~%M KHOURY 315 S BEVERLY DR #201 BEVERLY HILLS CA 90212	13934613078
D K OGDEN L L C	%KRE CAPITAL LLC~%M KHOURY 315 S BEVERLY DR #201 BEVERLY HILLS CA 90212	13934613003
D K OGDEN L L C	%KRE CAPITAL LLC~%M KHOURY 315 S BEVERLY DR #201 BEVERLY HILLS CA 90212	13934613002
D K OGDEN L L C	%KRE CAPITAL LLC~%M KHOURY 315 S BEVERLY DR #201 BEVERLY HILLS CA 90212	13934613090
D M D LIVING TRUST	DILLARD DOYLE M & MARY M TRS 6305 OBANNON DR LAS VEGAS NV 89146	13934612051
DAS MANU & THERESE	631 TROON CT MILPITAS CA 95035	13934613238
DEAMORIM ELIANA SANTOS	150 LAS VEGAS BLVD N #1717 LAS VEGAS NV 89101	13934613156
DEMASI DOUGLAS & HEATHER L	THOMAS GEORGE GREGORY JR TRS 2945 S MONTE CRISTO WAY LAS VEGAS NV 89117	13934612069
DEMASI FAMILY TRUST	CONNERY SHIRLEEN TRS 2908 BERNARDO LN LAS VEGAS NV 89102-4052	13935211020
DEMASI FAMILY TRUST	CONNERY SHIRLEEN TRS 2908 BERNARDO LN LAS VEGAS NV 89102-4052	13935211021
DEMASSI DOUGH & HEATHER	2716 BAYO CT LAS VEGAS NV 89102-2018	13934612064
DIAZ BALTAZAR	GARCIA VERONICA N 209 N 13TH ST LAS VEGAS NV 89101-4391	13935211086
DONOVAN CONRAD	150 N LAS VEGAS BLVD #2510 LAS VEGAS NV 89101	13934613273
DORADO RIGOBERTO & IRMA	405 N 8TH ST LAS VEGAS NV 89101-3015	13934512067
DOWNTOWN CARSON L L C	P O BOX 1570 LAS VEGAS NV 89125	13934611051
DOWNTOWN EMPIRE	808 S MAIN ST LAS VEGAS NV 89101	13934512083
DOWNTOWN EMPIRE L L C	808 S MAIN ST LAS VEGAS NV 89101	13934512086
DREXLER MICHAEL & DIANA	745 N ROYAL CREST CIR #146 LAS VEGAS NV 89169-8303	13935110008
DREXLER MICHAEL & DIANA	750 S ROYAL CREST CIR #146 LAS VEGAS NV 89169-8319	13934512096
E B 2 L L C	1100 E BRIDGER AVE LAS VEGAS NV 89101-5315	13934712107
E B 2 L L C	1100 E BRIDGER AVE LAS VEGAS NV 89101-5315	13934712108
E VILLAGE L L C	2945 S MONTE CRISTO WY LAS VEGAS NV 89117-3224	13934512087
EBIHARA DANIEL D	1152 CARSON AVE LAS VEGAS NV 89101-5360	13935317006
EDWARDS JAMES K & RETA E LIV TR	EDWARDS JAMES K & RETA E TRS 150 LAS VEGAS BLVD #815 LAS VEGAS NV 89101-2925	13934613015
ELEVEN L L C	4485 SUNSET LAS VEGAS NV 89118	13934701007
ENCRYPTIC L L C	114 N 3RD ST LAS VEGAS NV 89101-2926	13934611019
ENTERPRIZZZ L L C	150 LAS VEGAS BLVD N #815 LAS VEGAS NV 89101-2925	13934613170
ENTERPRIZZZ L L C	150 LAS VEGAS BLVD NORTH LAS VEGAS NV 89101-2919	13934613013
EPPS ISSIAH	37 WINSLOW AVE VALLEJO CA 94590-3318	13934613167

**Report of All Selected Parcels****Case Number:**

RQR-63628

**Printed On:** Thu: June 2, 2016

<u>Owner</u>	<u>Address</u>	<u>Parcel Number</u>
E-VILLAGE L L C	2945 S MONTE CRISTO LAS VEGAS NV 89117-3224	13934512088
F A E C HOLDINGS WIRRULLA L L C	%M MATKINS 450 FREMONT ST #285 LAS VEGAS NV 89101	13934513002
F A E C HOLDINGS WIRRULLA L L C	450 FREMONT ST #285 LAS VEGAS NV 89101	13934513002
FERRERA J-M FAMILY TRUST	FERRERA JOSEPH & MARLY TRS 1905 WESTLUND DR LAS VEGAS NV 89102-2016	13934712085
FITZHOUSE ENTERPRISES INC	1711 WHITNEY MESA DR HENDERSON NV 89014	13935201005
FLORES ARACELI	ALDANA PAULO C 2231 BELMONT AVE LONG BEACH CA 90815	13934512063
FONG DAVID	2859 MARATHON DR HENDERSON NV 89074-2497	13935317011
FORTRESS OGDEN II L L C	5052 S JONES #155 LAS VEGAS NV 89118	13935211063
FORTRESS OGDEN III LLC	5052 S JONES #155 LAS VEGAS NV 89118	13935211064
FORTRESS OGDEN L L C	5052 S JONES #155 LAS VEGAS NV 89118	13935211062
FORTRESS OGDEN L L C	5052 S JONES #155 LAS VEGAS NV 89118	13935211061
FREMONT LV BLVD	P O BOX 1570 LAS VEGAS NV 89125	13934601002
GALLIN DEBORAH SARAH & HOWARD	10 CORNWALLS RD EAST SETAUKET NY 11733	13934613109
GAROFALO JEFFERY A	805 CYPRESS MEADOWS LN LAS VEGAS NV 89144	13934714005
GEBBIA DAVID CUST	%D M & C GEBBIA 9464 WILSHIRE BLVD BEVERLY HILLS CA 90212	13934613269
GEBBIA TRISTAN ETAL	GEBBIA RICHARD CUST 55 DIXON TRAIL RD HIDDEN HILLS CA 91302	13934613256
GIL UTAH L L C	8251 WINDSOR CREST CT LAS VEGAS NV 89123-2224	13935211051
GILBERT JUSTIN K	1134 E CARSON AVE LAS VEGAS NV 89101-5359	13935317010
GOBLIRSCH FAMILY COMBINED REVOCA	GOBLIRSCH DEAN E & LEILA J TRS 150 N LAS VEGAS BLVD #1907 LAS VEGAS NV 89101	13934613182
GOLD L T R E L L C #18	9159 W FLAMINGO RD #102 LAS VEGAS NV 89147	13934613112
GOLD LT RE L L C #8	9159 W FLAMINGO RD #102 LAS VEGAS NV 89147-6454	13934613208
GONG JINWEN	CHI HUIMIN 12683 NW WAKER DR PORTLAND OR 97229	13934613130
GOOD EARTH ENTERPRISES INC	785 COLUMBUS AVE SAN FRANCISCO CA 94133-2732	13934611039
GOOD EARTH ENTERPRISES INC	785 COLUMBUS AVE SAN FRANCISCO CA 94133-2732	13934611034
GRIFFO ROSE	218 S 11ST LAS VEGAS NV 89101-8915	13934712087
GRUBER FRANK J	CONSALVO JENNIFER L 121 S 11TH ST LAS VEGAS NV 89101-5605	13934714002
HAASE THOMAS F & SUSAN N	8608 DESERT BIRD DR LAS VEGAS NV 89145	13934613065
HAILU GOITOM H	8140 KOKOMA DR LAS VEGAS NV 89128-2059	13935211050
HAISALNA LIVING TRUST	GIRON HAROLD & ISLENA TRS P O BOX 1651 LAS VEGAS NV 89125-1651	13935211107
HALL STEPHEN	400 N 10TH ST LAS VEGAS NV 89101-3124	13935110016
HALL STEPHEN	400 N 10TH ST LAS VEGAS NV 89101-3124	13935110015
HAM A W III TRUST	HAM A W III TRS 2008 GRAY EAGLE WY LAS VEGAS NV 89117-5738	13934611008

**Report of All Selected Parcels****Case Number:**

RQR-63628

**Printed On:** Thu: June 2, 2016

<u>Owner</u>	<u>Address</u>	<u>Parcel Number</u>
HAM A W III TRUST	HAM A W III TRS 2008 GRAY EAGLE WY LAS VEGAS NV 89117-5738	13934611007
HAM ARTEMUS W III PPTY TRUST AGR	HAM ARTEMUS W III TRS 2008 GRAY EAGLE WY LAS VEGAS NV 89117-5738	13934611006
HAM ARTEMUS W III PROPERTY TRUST	2008 GRAY EAGLE WAY LAS VEGAS NV 89117-5738	13934601006
HAND PROPERTY HOLDING COMPANY	295 E WARM SPRINGS RD #101 LAS VEGAS NV 89119-4212	13935211079
HAND PROPERTY HOLDING COMPANY	295 E WARM SPRINGS RD #101 LAS VEGAS NV 89119-4212	13935211080
HANS MARK G	191 LEE RD BERE A OH 44017	13934613113
HAWAIIAN-I L L C	2716 BAYO CT LAS VEGAS NV 89102-2018	13934612063
HAYGOOD FAMILY TRUST	HAYGOOD LAWRENCE F & ALICE B TRS 6220 ELTON AVE LAS VEGAS NV 89107-2542	13935211012
HEE WILLIAM K M & SHIRLEY Y	3009 WOODLAWN DR HONOLULU HI 96822-1563	13934613028
HENRY J PROPERTIES LAS VEGAS LLC	P O BOX 55777 LITTLE ROCK AR 72215-5777	13934511008
HERNANDEZ TEODORO	150 N LAS VEGAS BLVD #1001 LAS VEGAS NV 89101	13934613041
HFT FREMONT HOLDINGS LLC ETAL	FORTUNE LAND COMPANY 2681 HARBOR HILLS LN LAS VEGAS NV 89117	13935310012
HFT FREMONT HOLDINGS LLC ETAL	FORTUNE LAND COMPANY 2681 HARBOR HILLS LN LAS VEGAS NV 89117	13935310011
HICKMAN RONALD D & BECKY A	14 RAILROAD AVE KELLOGG ID 83837-2544	13934712109
HIDALGO GENARO GOLECO JR	BELCHER JEFFREY PRATT 150 N LAS VEGAS BLVD #1713 LAS VEGAS NV 89101	13934613152
HILL MARIAN E	433 N 10TH ST LAS VEGAS NV 89101-3105	13935110019
HIMES FAMILY TRUST	5620 DARBY AVE LAS VEGAS NV 89146-7916	13934512084
HISTORIC CLARK COTTAGES L L C	502 N 7TH ST LAS VEGAS NV 89101-3012	13934501012
HONG FAN	3160 W SAHARA AVE #A-22 LAS VEGAS NV 89102-6096	13934712065
HOOPER S L II L L C	206 W MAIN ST WEISER ID 83672	13934712062
HYMAN ALFRED H & L FAM TR 1995	HYMAN ALLEN TRS 10737 RIVERSIDE DR NORTH HOLLYWOOD CA 91602-2324	13934512092
I & A LAND L L C	265 PILOT RD LAS VEGAS NV 89119-3533	13934612038
I & A LAND L L C	265 PILOT RD LAS VEGAS NV 89119-3533	13934612039
IAMELE LUIGI TRUST	IAMELE LUIGI TRS 500 N 9TH ST LAS VEGAS NV 89101-3037	13935110009
IKE GAMING INC	107 N 6TH ST 3RD FLOOR LAS VEGAS NV 89101-4239	13934612010
IKE GAMING INC	107 N 6TH ST 3RD FLOOR LAS VEGAS NV 89101-4239	13934512104
IKE GAMING INC	107 N 6TH ST 3RD FLOOR LAS VEGAS NV 89101-4239	13934611020
IKE GAMING INC	107 N 6TH ST 3RD FLOOR LAS VEGAS NV 89101-4239	13934612003
IKE GAMING INC	107 N 6TH ST 3RD FLOOR LAS VEGAS NV 89101-4239	13934512027
IKE GAMING INC	107 N 6TH ST 3RD FLOOR LAS VEGAS NV 89101-4239	13934611002
IKE GAMING INC	107 N 6TH ST 3RD FLOOR LAS VEGAS NV 89101-4239	13934612004
IKE GAMING INC	107 N 6TH ST 3RD FLOOR LAS VEGAS NV 89101-4239	13934611010

**Report of All Selected Parcels****Case Number:**

RQR-63628

**Printed On:** Thu: June 2, 2016

<u>Owner</u>	<u>Address</u>	<u>Parcel Number</u>
IKE GAMING INC	107 N 6TH ST 3RD FLOOR LAS VEGAS NV 89101-4239	13934611003
IKE GAMING INC	107 N 6TH ST 3RD FLOOR LAS VEGAS NV 89101-4239	13934611009
INGRAM LAWRENCE E	150 LAS VEGAS BLVD N #2109 LAS VEGAS NV 89101-2952	13934613220
INTHAVONG CHINDAVONG & MANEEVANH	331 N 9TH ST LAS VEGAS NV 89101-3032	13934512091
IRICK CHRIS A	410 N 8TH ST LAS VEGAS NV 89101-3016	13934512076
IWATA PAUL Y	9945 TITAN PARK CIR LITTLETON CO 80125-1717	13934613083
IZZY TRUST	DORINBAUM ISRAEL & SUSAN D TRS 4654 BERSAGLIO ST LAS VEGAS NV 89135-2470	13935211016
J & J CAPITAL ORGANIZATION LTD	5560 S FT APACHE #100 LAS VEGAS NV 89148-7699	13934512059
J HENRY PROPERTIES LAS VEGAS LLC	P O BOX 55777 LITTLE ROCK AR 72215-5777	13934511006
J HENRY PROPERTIES LAS VEGAS LLC	P O BOX 55777 LITTLE ROCK AR 72215-5777	13934512028
J HENRY PROPERTIES LAS VEGAS LLC	P O BOX 55777 LITTLE ROCK AR 72215-5777	13934511009
J HENRY PROPERTIES LAS VEGAS LLC	P O BOX 55777 LITTLE ROCK AR 72215-5777	13934511007
J HENRY PROPERTIES LAS VEGAS LLC	P O BOX 55777 LITTLE ROCK AR 72215-5777	13934511005
JACOB MARIA	150 LAS VEGAS BLVD #1904 LAS VEGAS NV 89101-2949	13934613179
JACQUEZ LARRY & EILEEN	1227 S IRMA CT VISALIA CA 93292	13934613062
JORDAN PATRICIA A	1579 DALTON AVE DALTON GARDENS ID 83815-9624	13934512062
JUNIOR LEAGUE LV ENDOWMENT FUND	861 E BRIDGER AVE LAS VEGAS NV 89101-5539	13934701002
K M X I 2000 LIVING TRUST	PAPPAS CAROL J TRS 1125 CASHMAN DR LAS VEGAS NV 89102-1911	13934712031
K P PARTNERS IV L L C	1050 E SAHARA BLVD LAS VEGAS NV 89104-3243	13934612025
KAHMANN ANTHONY	150 N LAS VEGAS BLVD #1105 LAS VEGAS NV 89101	13934613066
KENNEDY EUGENE	150 N LAS VEGAS BLVD #817 LAS VEGAS NV 89101	13934613017
KENNY CRAIG P	501 S 8TH ST LAS VEGAS NV 89101	13934712067
KERR KATHERINE A	150 LAS VEGAS BLVD N #2217 LAS VEGAS NV 89101	13934613246
KERR KATHERINE A	150 LAS VEGAS BLVD N #2217 LAS VEGAS NV 89101	13934613122
KIMURA ROBYN & MIYO	1615 KAUMOLI ST PEARL CITY HI 96782	13934613104
KLEMP RICHARD J	MIYAMOTO GISELE M 959 S GREEN VALLEY PKWY #1811 HENDERSON NV 89012	13935317012
KNAFF PROPERTIES MANAGEMENT LLC	9811 W CHARLESTON BLVD #2-225 LAS VEGAS NV 89117	13935110014
KNAFF PROPERTIES MANAGEMENT LLC	9811 W CHARLESTON BLVD #2-225 LAS VEGAS NV 89117	13934512085
KNAFF PROPERTIES MANAGEMENT LLC	9811 W CHARLESTON BLVD #2-225 LAS VEGAS NV 89117	13935211006
KNAFF PROPERTIES MANAGEMENT LLC	9811 W CHARLESTON BLVD #2-225 LAS VEGAS NV 89117	13935112006
KNOX NANCY	425 N 10TH ST LAS VEGAS NV 89101-3105	13935110017
KRUITBOSCH LAMAR JOHN	211 S 9TH ST LAS VEGAS NV 89101-5508	13934712030

**Report of All Selected Parcels****Case Number:**

RQR-63628

**Printed On:** Thu: June 2, 2016

<u>Owner</u>	<u>Address</u>	<u>Parcel Number</u>
KRUPNICK STEVEN L	200 W SAHARA AVE #3411 LAS VEGAS NV 89102	13934613244
LANCASTER JACK D & HILDE C	8 FAIRFAX RD BAKERSFEILD CA 93307-3008	13934613039
LANDEROS MANUEL & MARCELINO	400 N 8TH ST LAS VEGAS NV 89101-3016	13934512066
LAS VEGAS DRAGON HOTEL L L C	1605 FREMONT ST LAS VEGAS NV 89101	13934612046
LAS VEGAS DRAGON HOTEL L L C	1605 FREMONT ST LAS VEGAS NV 89101	13934612045
LAS VEGAS U P EMPLOYEES F C U	320 N 10TH ST LAS VEGAS NV 89101-3154	13935211011
LAU JEFFREY & SOPHIE	785 COLUMBUS AVE SAN FRANCISCO CA 94133-2732	13934611029
LAU JEFFREY & SOPHIE	785 COLUMBUS AVE SAN FRANCISCO CA 94133-2732	13934611031
LAU JEFFREY & SOPHIE	785 COLUMBUS AVE SAN FRANCISCO CA 94133-2732	13934611030
LAU JEFFREY & SOPHIE	785 COLUMBUS AVE SAN FRANCISCO CA 94133-2732	13934611040
LAU JEFFREY & SOPHIE	785 COLUMBUS AVE SAN FRANCISCO CA 94133-2732	13934611032
LAU JEFFREY & SOPHIE	785 COLUMBUS AVE SAN FRANCISCO CA 94133-2732	13934611035
LAU JEFFREY & SOPHIE	785 COLUMBUS AVE SAN FRANCISCO CA 94133-2732	13934611033
LAZY K ENTERPRISES L L C	6548 HOLLY RIVER ST LAS VEGAS NV 89148	13935110012
LIG LAND DEVELOPMENT L L C	785 COLUMBUS AVE SAN FRANCISCO CA 94133-2732	13934611041
LIU XIN NICK	596 SAINT CROIX HENDERSON NV 89012	13934613164
LOCKER RYAN	1146 E CARSON AVE LAS VEGAS NV 89101-5360	13935317007
MAGHAMFAR HAMID R	329 LAS VEGAS BLVD LAS VEGAS NV 89101-2965	13934512003
MAGHAMFAR HAMID R	329 LAS VEGAS BLVD LAS VEGAS NV 89101-2965	13934512002
MAIDANI ASAF & SHARON LISA K	DORINBAUM ISRAEL & SUSAN D TRS 4654 BERSAGLIO ST LAS VEGAS NV 89135-2470	13935112005
MAIDANI EFRAT	DORINBAUM ISRAEL & SUSAN D TRS 4654 BERSAGLIO ST LAS VEGAS NV 89135	13935211008
MALM RONALD E & ALYCE	4707 MEMORY LN W UNIVERSITY PLACE WA 98466	13934613184
MARDIROSSIAN SEVAG V	ORANGE MANOR L L C 7470 COMMERCIAL WAY HENDERSON NV 89011	13934612041
MARKICH HALL BLDG CORP	911 1/2 OGDEN AVE LAS VEGAS NV 89101-4234	13934612074
MARSHALL FAMILY TRUST ETAL	BARDSLEY JEANETTE MARIE TRS 9910 S W ARBORCREST WAY PORTLAND OR 97225	13934613021
MARTELL JAMES C & CINDY M	4171 S PURPLE SAGE DR CHANDLER AZ 85248-4847	13934613185
MARTIN FAMILY TRUST	MARTIN RICHARD A & ELIZABETH TRS 6917 E BONANZA RD LAS VEGAS NV 89110-4225	13934512069
MARTINEZ DAN & STEPHANY	1729 WANDERING WINDS WY LAS VEGAS NV 89128-7978	13934612084
MAXIM DANIELLE	150 N LAS VEGAS BLVD #1209 LAS VEGAS NV 89101	13934613091
MCNAMEE KEVIN P	2755 GREAT SMOKEY CT WESTLAKE VILLAGE CA 91362-3727	13934613069
MILLER CLAY FERGUSON	101 EAST MAIN PULASKI IA 52584	13934613221
MILLER KATRINA	150 N LAS VEGAS BLVD #1818 LAS VEGAS NV 89101-2949	13934613175

**Report of All Selected Parcels****Case Number:**

RQR-63628

**Printed On:** Thu: June 2, 2016

<u>Owner</u>	<u>Address</u>	<u>Parcel Number</u>
MILLSAP JACK E	YOUNG ELIZABETH R 16400 SAYBROOK LN #112 HUNTINGTON BEACH CA 92649-2268	13935211024
MISHUCK LAWRENCE R & M L REV TR	MISHUCK LAWRENCE R & MARIA L TRS 18604 FIELDBROOK ST ROWLAND HEIGHTS CA 91748-4831	13934613081
MISSION SPRINGS PROPERTIES L L C	3870 FLAMINGO #A2-233 LAS VEGAS NV 89121-6228	13935317001
MORENO JOSE A	408 N 8TH ST #B LAS VEGAS NV 89101-3084	13934512068
MRAZ MARK	150 LAS VEGAS BLVD N #1615 LAS VEGAS NV 89101	13934613136
MULLINEAUX PROPERTIES L L C	274 PINE CREEK AVE FAIRFIELD CT 06824	13934613212
MULLINEAUX PROPERTIES L L C	274 PINE CREEK AVE FAIRFIELD CT 06824	13934613166
MULLINEAUX PROPERTIES L L C	274 PINE CREEK AVE FAIRFIELD CT 06824	13934613211
MURI MONIQUE	1212 6TH AVE N #150 NASHVILLE TN 37208	13934613206
MURRAY WAYNE E	6338 VIEWPOINT DR LAS VEGAS NV 89156-7006	13935317018
MUSCARE MICHAEL	488 HARRISON AVE CLAREMONT CA 91711	13934613106
MYERS DANIEL & BRENDA	150 N LAS VEGAS BLVD #1010 LAS VEGAS NV 89101	13934613050
NEVADA DEVELOPMENTS L L C	1537 HOLLYWOOD BLVD HOLLYWOOD FL 33020-5239	13935112003
NEVADA DEVELOPMENTS L L C	316 N 9TH ST #12 LAS VEGAS NV 89101-3068	13935112002
NEVADA REAL ESTATE TRUST	SHORT SUMMER TRS 24005 SUMMIT RD LOS GATOS CA 95033	13935211018
NEVADA REAL ESTATE TRUST	SHORT SUMMER TRS 24005 SUMMIT RD LOS GATOS CA 95033	13935211019
NGUYEN LINH	TRAN LICH X 11225 GOLDEN CHESTNUT PL LAS VEGAS NV 89135	13934613270
OAKTREE CAPITAL SERIES 1 L L C	3722 S LAS VEGAS BLVD #1604 E LAS VEGAS NV 89158	13934612044
OKUNA THOMAS M REVOCABLE LIV TR	OKUNA THOMAS M TRS 101 AUPUNI ST #703 HILO HI 96720-4256	13934613149
O'LEARY DAVIS V LTD	4512 MONTROSE BLVD HOUSTON TX 77006	13935317016
O'LEARY DAVIS V LTD	4512 MONTROSE BLVD HOUSTON TX 77006	13935317019
O'LEARY DAVIS V LTD	4512 MONTROSE BLVD HOUSTON TX 77006	13935317014
O'LEARY DAVIS V LTD	4512 MONTROSE BLVD HOUSTON TX 77006	13935317021
O'LEARY DAVIS V LTD	4512 MONTROSE BLVD HOUSTON TX 77006	13935317015
O'LEARY DAVIS V LTD	4512 MONTROSE BLVD HOUSTON TX 77006	13935317002
O'LEARY DAVIS V LTD	4512 MONTROSE BLVD HOUSTON TX 77006	13935317022
O'LEARY DAVIS V LTD	4512 MONTROSE BLVD HOUSTON TX 77006	13935317020
O'LEARY DAVIS V LTD	4512 MONTROSE BLVD HOUSTON TX 77006	13935317023
O'LEARY DAVIS V LTD	4512 MONTROSE BLVD HOUSTON TX 77006	13935317013
OLSON MARLAN V & MICHELLE D	14029 WAGON WY SILVER SPRINGS MD 20906-2065	13934613100
PARKER TRUST	2612 ASHBY AVE LAS VEGAS NV 89102	13935317017

**Report of All Selected Parcels****Case Number:**

RQR-63628

**Printed On:** Thu: June 2, 2016

<u>Owner</u>	<u>Address</u>	<u>Parcel Number</u>
PELLICCIA UGO & LINDA	3055 S BRONCO ST LAS VEGAS NV 89146-6601	13935211052
PIERCE ROSEMARY	503 W ASTER CT POST FALLS ID 83854	13934712038
PIONEER L L C	3605 S TOWN CENTER DR #A LAS VEGAS NV 89135	13934712042
PIONEER L L C	3605 S TOWN CENTER DR #A LAS VEGAS NV 89135	13934712041
PITKANEN TIMOTHY D	150 N LAS VEGAS BLVD #2115 LAS VEGAS NV 89101	13934613226
POKOJNI ISAAC J	SIMON CAMILLA N 150 N LAS VEGAS BLVD #1107 LAS VEGAS NV 89101	13934613068
PRICE SARA J & GREGORY	1138 E CARSON AVE LAS VEGAS NV 89101	13935317009
PROVIEW SERIES 1 L L C	144 N BRISTOL AVE LOS ANGELES CA 90049	13934512058
PROVIEW SERIES 12 L L C	144 N BRISTOL AVE LOS ANGELES CA 90049	13934612085
PROVIEW SERIES 2 L L C	144 N BRISTOL AVE LOS ANGELES CA 90049	13935211002
PROVIEW SERIES 4 L L C	144 N BRISTOL AVE LOS ANGELES CA 90049	13935211122
PROVIEW SERIES 6 L L C	144 N BRISTOL AVE LOS ANGELES CA 90049	13934612048
PYAN TRAVIS & INDERA	150 N LAS VEGAS BLVD #1216 LAS VEGAS NV 89101	13934613098
R R R HOMES L L C SERIES 214	P O BOX 98378 LAS VEGAS NV 89193-8378	13934712086
REGAL GROUP L L C	713 N ROXBURY DR BEVERLY HILLS CA 90210-3211	13935211075
REYNOSO ESTELA	7040 PALMYRA AVE LAS VEGAS NV 89117-3108	13934512060
RICCIARDELLI RUSSELL N	9154 WHITE ROCK PEAK ST LAS VEGAS NV 89113	13935211013
RIPLEY TYLER JO WYNNE	150 N LAS VEGAS BLVD #1020 LAS VEGAS NV 89101	13934613060
ROBERTS BRADFORD	TOYODA KUMIKO 1820 E SAHARA AVE #101 LAS VEGAS NV 89104	13934512093
RODLAND MARCUS	150 N LAS VEGAS BLVD #2211 LAS VEGAS NV 89101	13934613240
RODRIGUEZ ABRAHAM & P JT REV TR	RODRIGUEZ ABRAHAM & PEACHES TRS 2325 BOULDER LN BELOIT WI 53511-6709	13934512065
RODRIGUEZ RAFAEL C	1025 STEWART AVE LAS VEGAS NV 89101-4301	13935211034
RUBINSTEIN DAVID & MICHELLE	8 SANDY POINT RD LAKEVILLE MA 02347	13934613118
S D A S H S APARTMENTS LTD L P	5655 S YOSEMITE ST #301 GREENWOOD VILLAGE CO 80111-3221	13934701004
S D A S H S APARTMENTS LTD L P	5655 S YOSEMITE ST #301 GREENWOOD VILLAGE CO 80111-3221	13934701003
S L Z L L C	27 TANNERS RD GREAT NECK NY 10020	13934714003
SALDANHA VILAS & VICKI D	150 N LAS VEGAS BLVD #921 LAS VEGAS NV 89101	13934613040
SAPONARA VINCENT	RISSONE MELINA 1790 LANDER ST RENO NV 89509	13934712039
SAYLOR HAROLD MICHAEL	5452 CASTLE VISTA CT LAS VEGAS NV 89118	13934613255
SCOTT STEPHEN	413 N 9TH ST LAS VEGAS NV 89101-3034	13934512095
SHABO PROPERTIES L L C	1404 FREMONT ST LAS VEGAS NV 89101	13934612047
SHAKHBEKIAN NELLI	8692 BLUE OCEAN ST LAS VEGAS NV 89148	13935211001

**Report of All Selected Parcels****Case Number:**

RQR-63628

**Printed On:** Thu: June 2, 2016

<b>Owner</b>	<b>Address</b>	<b>Parcel Number</b>
SHREE GANESHA INC	700 E FREMONT ST LAS VEGAS NV 89101-5616	13934601011
SHUSTREAM L L C	928 SAN RAPHAEL ST KISSIMMEE FL 34759-3907	13934613063
SIEMERS DONALD DEAN	150 N LAS VEGAS BLVD #1903 LAS VEGAS NV 89101	13934613178
SILBERNAGEL GILBERT	4613 PLEASANT VALLEY RD OAKDALE CA 95361	13935211015
SISK WILLIAM BRUCE	PANT PAULA PRAGYA 150 LAS VEGAS BLVD N #915 LAS VEGAS NV 89101	13934613034
SMITH RUBY V	SMITH RUBY V REVOCABLE LIVING TR 401 N 8TH ST LAS VEGAS NV 89101-3015	13934512077
SMITH RUBY V REVOCABLE LIVING TR	SMITH RUBY V TRS 401 N 8TH ST LAS VEGAS NV 89101-3015	13934512078
SOFFER RINA & DAVID	8022 S RAINBOW BLVD #282 LAS VEGAS NV 89139	13935211068
SOLIS ALFREDO III	1108 E CARSON AVE LAS VEGAS NV 89101-5300	13934714008
SORRENTINO FRANK	1118 E CARSON LAS VEGAS NV 89101-5327	13935310005
SOSA ANDRES	501 N 10TH ST LAS VEGAS NV 89101-3107	13935110021
SOUTHERN NV HOUSING AUTHORITY	340 N 11TH ST #170 LAS VEGAS NV 89101-3125	13935110032
SOUTHERN NV HOUSING AUTHORITY	340 N 11TH ST #170 LAS VEGAS NV 89101-3125	13935110030
SOUTHERN NV HOUSING AUTHORITY	340 N 11TH ST #170 LAS VEGAS NV 89101-3125	13935211009
SOUTHERN NV HOUSING AUTHORITY	340 N 11TH ST #170 LAS VEGAS NV 89101-3125	13935211010
SOUTHERN NV HOUSING AUTHORITY	340 N 11TH ST #170 LAS VEGAS NV 89101-3125	13935110031
SPAIN DIXON L LIVING TRUST	SPAIN DIXON L TRS 3595 SANTA FE AVE #181 LONG BEACH CA 90810-4359	13934613161
SPARUS L L C	117 S COOK ST #102 BARRINGTON IL 60010	13935112004
STEELE T H	P O BOX 424 EASTLAKE CO 80614-0424	13934712110
STEWART L L C	1849 CIVIC CENTER DR NORTH LAS VEGAS NV 89030	13934512030
STEWART LV INVESTORS L L C	5967 W 3RD ST #300 LOS ANGELES CA 90036-2835	13935211032
STEWART LV INVESTORS L L C	5967 W 3RD ST #300 LOS ANGELES CA 90036-2835	13935211033
STEWART PINES III L P	295 E WARM SPRINGS RD #101 LAS VEGAS NV 89119-4212	13935201002
STOVER JAMES & JOANNE	STOVER JAMES & JOANNE 1110 CARSON AVE LAS VEGAS NV 89101-5300	13935317005
STRAGER DAVID	3245 PALM CENTER DR LAS VEGAS NV 89103	13935211037
STRUAN FAMILY L L C	2015 E WINDMILL LN LAS VEGAS NV 89123-2043	13935211007
SYNERGY PROPERTY L L C	2359 ELEVADO RD VISTA CA 92084-2847	13934712063
SYNERGY PROPERTY L L C	2359 ELEVADO RD VISTA CA 92084-2847	13934712064
T I E INC	329 N 11TH ST LAS VEGAS NV 89101-3144	13935211041
T I H BRIDGER L L C ETAL	3930 HOWARD HUGHES PKWY #180 LAS VEGAS NV 89169	13934712001
TAKAMIYA ROBERT & DEIRDRE	772 FLOWING MEADOW DR HENDERSON NV 89014	13934613061
TASSONE REGINA	TONOYAN JOHN & CAROLE 150 N LAS VEGAS BLVD #1207 LAS VEGAS NV 89101	13934613089

**Report of All Selected Parcels****Case Number:**

RQR-63628

**Printed On:** Thu: June 2, 2016

<u>Owner</u>	<u>Address</u>	<u>Parcel Number</u>
T-BREO II L L C	1 MAIN ST LAS VEGAS NV 89101-6370	13934611016
T-BREO II L L C	1 MAIN ST LAS VEGAS NV 89101-6370	13934611017
TEMBY WESLLEY D & EVA	4106 COLLEGE RD #1016 LUFKIN TX 75901	13934613023
THAJJ L L C	704 S 9TH ST LAS VEGAS NV 89101-7015	13934512082
THE PIONEER L L C	3605 S TOWN CENTER DR #A LAS VEGAS NV 89135	13934712066
THE PIONEER L L C	3605 S TOWN CENTER DR #A LAS VEGAS NV 89135	13934712043
THREE CASTLES L L C	1137 S RANCHO RD #120 LAS VEGAS NV 89102	13935211065
T-I-E	329 N 11TH ST LAS VEGAS NV 89101-3144	13935211040
TRINDADE LIVING TRUST	TRINDADE DAVID C & B A CO-TRS 6005 ASSISI CT SAN JOSE CA 95138	13935211014
TRUSTEE CLARK COUNTY TREASURER	5421 LIVERPOOL RD LAS VEGAS NV 89107-3751	13934512061
VALDEZ EDWARD D LIVING TRUST	VALDEZ LARNA D LIVING TRUST 600 QUEEN ST #2609 HONOLULU HI 96813	13934613190
VALLEY OF THE SUN LAS VEGAS LLC	1345 S LEWIS ST ANAHEIM CA 92805-6431	13934601009
VANEIJK WILLIS FAMILY TRUST	VANEIJK MATTHEW G & MERIAN TRS 1009 MIDDLE AVE MENLO PARK CA 94025	13934613267
VAZQUEZ JOSE L & FRANCISCA	2210 MONTEREY AVE LAS VEGAS NV 89104-3834	13934712088
VIRAVAKIN RANEE	505 ELMWOOD AVE EVANSTON IL 60202-2813	13935211076
VUONG DIANA	LAM MAN CAM 7279 IRON OAK AVE LAS VEGAS NV 89113-3093	13934612071
WALTERS EDWARD	402 N 9TH ST LAS VEGAS NV 89101-3035	13935110013
WANDERER JOHN FAMILY TRUST	1711 S 15TH ST LAS VEGAS NV 89104-3102	13934512057
WEST COAST MONOPOLY 2014 REVOCAB	ALLEN LATRICE TRS 6709 LA TIJERA BLVD #913 LOS ANGELES CA 90045	13934613027
WHITTEMORE ROBERT	1112 CARSON DR LAS VEGAS NV 89101-5300	13935317004
WILSON GARY WOLCOTT	P O BOX 684 MOAPA NV 89025	13935211084
WINTERS FAMILY TRUST	WINTERS ELROY & CHIYOKO A 5201 WASHOE AVE LAS VEGAS NV 89107-1733	13934712040
WOODY JAMES K & MARGARET T	2003 NORTH B STREET MIDLAND TX 79705	13934613233
YANG TIM ELLIOT	150 N LAS VEGAS BLVD #1015 LAS VEGAS NV 89101	13934613055
YE YING	896 JUPITER CT FOSTER CITY CA 94404	13935112007
YE YING	896 JUPITER CT FOSTER CITY CA 94404	13935112008
YEE NORMAN S W & WENSHIN	150 N LAS VEGAS BLVD #1911 LAS VEGAS NV 89101	13934613186
YOU ME L L C	3900 PARADISE RD #121 LAS VEGAS NV 89169	13934613148
YOU ME L L C	3900 PARADISE RD #121 LAS VEGAS NV 89169	13934613176
ZARKIEWICZ ROMAN	150 N LAS VEGAS BLVD #2001 LAS VEGAS NV 89101	13934613194