



DOGGIE DISTRICT - W. CRAIG ROAD

7083 WEST CRAIG ROAD
 LAS VEGAS, NEVADA 89129
 APN: 138-03-701-003

ENGINEERING FIRM

ACG DESIGN
 NATHAN JONES
 4310 CAMERON ST., SUITE 12-A
 LAS VEGAS, NV 89103
 PHONE: (702) 448-8737

DEVELOPER

NELSON TRESSLER
 3930 HOWARD HUGHES PKWY
 SUITE 180
 LAS VEGAS, NV 89169
 PHONE (702) 733-7500

OWNER

CRAIG 95 HOLDINGS, LLC
 3223 N RAINBOW BLVD
 LAS VEGAS, NV 89108

FLOOD NOTE:

FEMA MAP 32003C2155F, DATED NOVEMBER 16, 2011, NOT YET REVISED TO REFLECT LOMR (CASE NO. 12-09-0091P), EFFECTIVE DATE NOVEMBER 17, 2011. PER LOMR, THIS PROPERTY WAS REMOVED FROM THE FLOOD ZONE, AND IS NOW IN UNSHADED ZONE "X", AREAS DETERMINED TO BE OUTSIDE THE 0.2% ANNUAL CHANCE FLOODPLAIN.

BENCHMARK

CITY OF LAS VEGAS BENCHMARK BLV00 304, BEING A RIVET AND PLATE IN TOP OF CURB AT THE NORTHEAST CORNER OF CRAIG ROAD AND TENAYA WAY.

ELEVATION = 2325.34 FEET
 = 708.765 METERS

BASIS OF BEARINGS

S89°47'29"E BEING THE BEARING OF THE CENTERLINE OF CRAIG ROAD AS SHOWN BY MAP THEREOF ON FILE IN BOOK 117 OF PLATS, PAGE 95 OF OFFICIAL RECORDS, CLARK COUNTY RECORDER'S OFFICE, CLARK COUNTY, NEVADA, LYING WITHIN SECTION 3, TOWNSHIP 20 SOUTH, RANGE 60 EAST, M.D.M., CITY OF LAS VEGAS, CLARK COUNTY, NEVADA.

LEGAL DESCRIPTION

BEING A PORTION OF THE NORTHEAST QUARTER (NE 1/4) OF THE NORTHWEST (NW 1/4) OF THE SOUTHEAST QUARTER (SE 1/4) OF SECTION 3, TOWNSHIP 20 SOUTH, RANGE 60 EAST, M.D.M., CLARK COUNTY, NEVADA, AND BEING MORE PARTICULARLY DESCRIBED AS FOLLOWS:
 COMMENCING AT THE NORTHWEST CORNER OF THE SOUTHEAST QUARTER (SE 1/4) OF SECTION 3, TOWNSHIP 20 SOUTH, RANGE 60 EAST, M.D.M., SAID POINT BEING COINCIDENT WITH THE INTERSECTION OF TENAYA WAY (80.00 FEET IN WIDTH) AND CRAIG ROAD (WIDTH VARIES);
 THENCE SOUTH 89°47'29" EAST ALONG THE NORTH LINE OF SAID SOUTHEAST QUARTER (SE 1/4) OF SECTION 3, A DISTANCE OF 654.42 FEET; THENCE DEPARTING SAID NORTH LINE, SOUTH 00°30'49" WEST, A DISTANCE OF 50.00 FEET TO A POINT ON THE SOUTHERLY RIGHT OF WAY LINE OF CRAIG ROAD, AND THE NORTHEAST CORNER OF LOT ONE (1) AS SHOWN BY "AMENDED FINAL MAP OF CRAIG MARKETPLACE A COMMERCIAL SUBDIVISION" RECORDED AS BOOK 117 OF PLATS, PAGE 95, SAID POINT COINCIDENT WITH THE WESTERLY CORNER OF THAT PARCEL OF LAND DESCRIBED IN QUIT CLAIM DEED TO THE STATE OF NEVADA, RECORDED AS BOOK 910114 AS INSTRUMENT 01165, OFFICIAL RECORDS AND THE POINT OF BEGINNING; THENCE DEPARTING SAID SOUTHERLY RIGHT OF WAY LINE, SOUTH 77°06'47" EAST ALONG SAID SOUTHERLY LINE OF THAT PARCEL OF LAND DEEDED TO THE STATE OF NEVADA, A DISTANCE OF 45.20 FEET; THENCE SOUTH 80°42'59" EAST, A DISTANCE OF 51.12 FEET TO THE SOUTHEASTERLY CORNER OF SAID PARCEL OF LAND DEEDED TO THE STATE OF NEVADA, SAID POINT COINCIDENT WITH THE WESTERLY RIGHT OF WAY LINE OF US HIGHWAY 95;
 THENCE SOUTH 16°25'01" EAST ALONG SAID WESTERLY RIGHT OF WAY LINE, A DISTANCE OF 586.09 FEET TO THE NORTHEAST CORNER OF SAID LOT 1; THENCE DEPARTING SAID WESTERLY RIGHT OF WAY LINE, NORTH 89°47'29" WEST ALONG THE SOUTHERLY LINE OF SAID LOT ONE (1), A DISTANCE OF 350.23 FEET TO THE NORTHEAST CORNER OF SAID LOT ONE (1);
 THENCE NORTH 00°31'24" EAST ALONG THE EASTERLY LINE OF SAID LOT ONE (1), A DISTANCE OF 610.01 FEET TO THE POINT OF BEGINNING.

CONTAINING 3.53 ACRES MORE OR LESS.

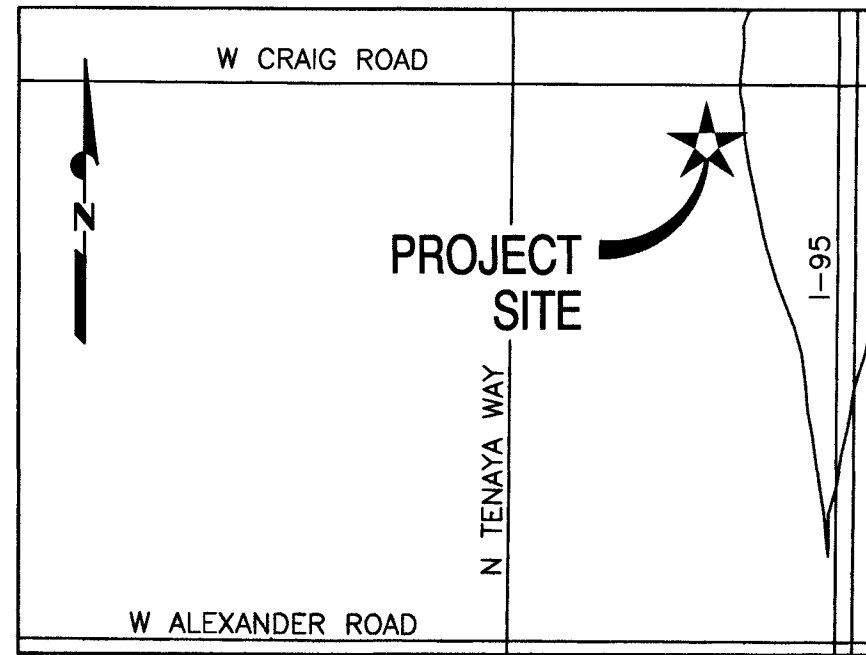
CAUTION TO CONTRACTOR

THE CONTRACTOR SHALL BE RESPONSIBLE TO INVESTIGATE AND VERIFY THE ACTUAL LOCATION AND DEPTH OF ALL EXISTING UNDERGROUND FACILITIES AT LEAST 48 HOURS IN ADVANCE OF THE PERFORMANCE OF ANY WORK.

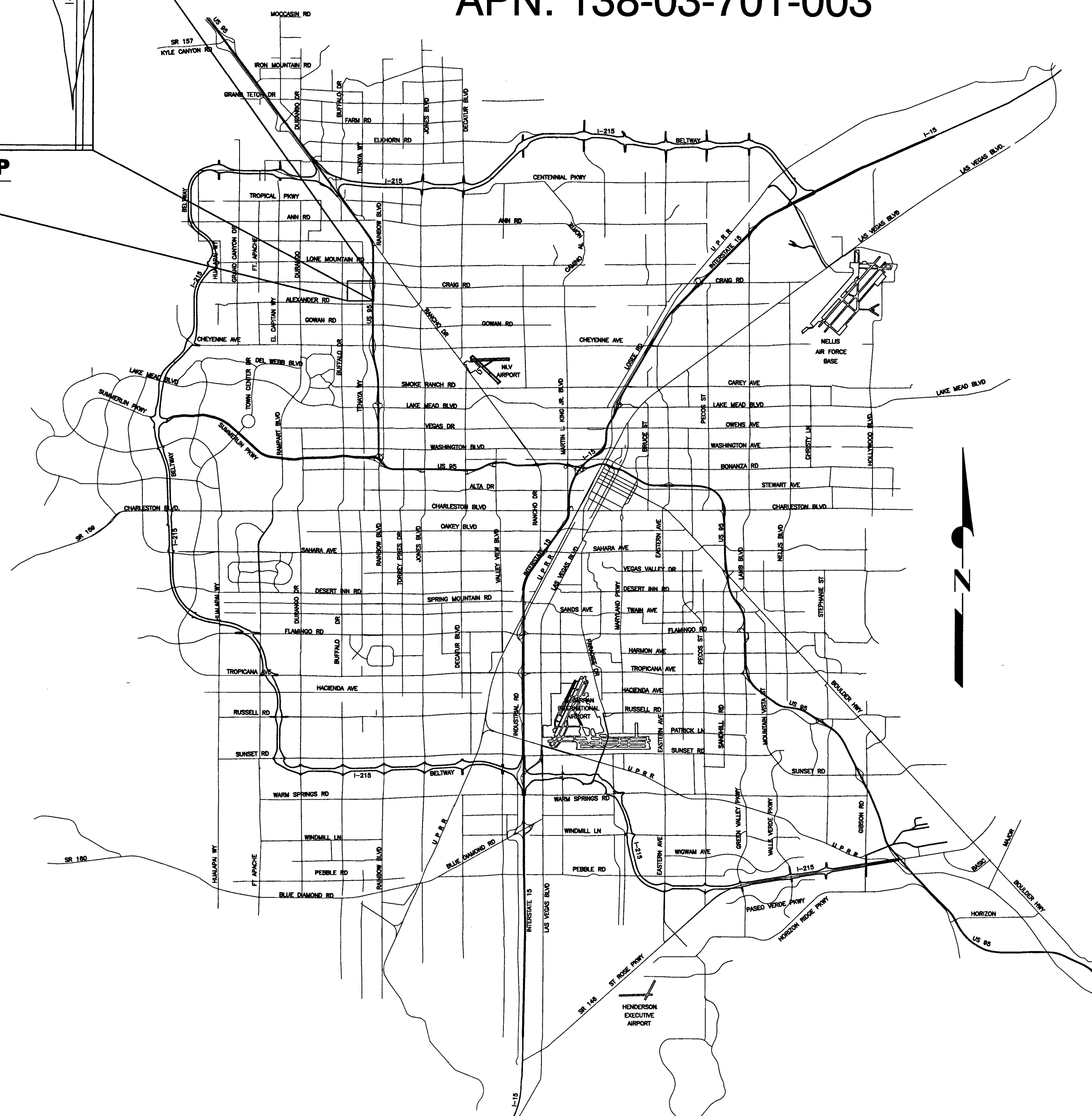
NOTE

THESE PLANS SHALL NOT, IN PART OR IN WHOLE, BE USED FOR CONSTRUCTION UNTIL APPROVED AND SIGNED BY THE GOVERNING AGENCY. ENGINEER TO BE NOTIFIED OF ANY DISCREPANCIES IMMEDIATELY.

ACG DESIGN, LLC. ASSUMES NO RESPONSIBILITY FOR EXISTING UTILITY LOCATIONS, SHOWN OR NOT SHOWN. THE UTILITIES SHOWN ON THIS DRAWING HAVE BEEN PLOTTED FROM RECORD INFORMATION AND ARE FOR THE CONVENIENCE OF THE CONTRACTOR ONLY. THE CONTRACTOR IS RESPONSIBLE TO FIELD VERIFY THE LOCATIONS AND DEPTHS OF ALL RELEVANT UTILITIES PRIOR TO COMMENCING WITH CONSTRUCTION. THE CONTRACTOR IS RESPONSIBLE TO NOTIFY THE ENGINEER OF WORK, IN WRITING, OF ANY CONFLICTS OR DISCREPANCIES.



VICINITY MAP
 NOT TO SCALE



PROJECT QUANTITIES

DESCRIPTION	UNIT	QUANTITY	
		PUBLIC	PRIVATE
TYPE II AGGREGATE BASE	CY	-	133
2" AC PAVEMENT	CY	-	398
MODIFIED 4" CURB	LF	-	208
CONCRETE SIDEWALK	SF	-	3,644
SIDEWALK DRAIN	EA	-	1
LANDSCAPE RETAINING WALL	LF	-	7
AC PAVT RESTORATION (UTILITY TRENCHING)	LF	-	42
8" WATER (FIRE)	LF	-	42
4" WIDE WHITE OR YELLOW PAINT LINE	LF	-	420
4" YELLOW DIAGONAL STRIPES - HANDICAP	LF	-	510
PRECAST BUMPER BLOCK	EA	-	11
STANDARD HANDICAP SYMBOL	EA	-	3

QUANTITY ESTIMATE DISCLAIMER NOTE

QUANTITIES SHOWN ARE ENGINEERING ESTIMATES ONLY. CONTRACTOR TO PERFORM AN INDEPENDENT ESTIMATE.

SHEET INDEX

DRAWING NO.	DESCRIPTION
C1	COVER SHEET
C2	GENERAL NOTES
C3	LEGEND & ABBREVIATIONS
C4	HORIZONTAL CONTROL PLAN
C5	GRADING PLAN
C6	UTILITY PLAN
C7	CROSS SECTIONS
C8	DETAILS
C9	TRAFFIC SIGNAGE & STRIPING PLAN

APPROVED BY:

Mark A. Povelka Mark A. Povelka For A.P. 7-20-17
 ALLEN PAVELKA, P.E. # 09029 CITY ENGINEER DATE

APPROVAL OF THESE PLANS IS LIMITED TO THOSE IMPROVEMENTS CONSTRUCTED IN THE DEDICATED RIGHTS-OF-WAY AND/OR DEDICATED EASEMENTS. THIS APPROVAL DOES NOT AUTHORIZE THE CONSTRUCTION OF ANY IMPROVEMENTS THAT DEVIATE FROM ADOPTED STANDARDS AND/OR SPECIFICATIONS, EXCEPT THOSE SPECIFICALLY LISTED UNDER DEVIATIONS FROM STANDARD. THE ENGINEER SHALL RESOLVE ANY DEVIATION OTHER THAN THOSE LISTED IN DEVIATIONS FROM STANDARDS IN FAVOR OF THE UNIFORM STANDARD DRAWINGS AND SPECIFICATIONS CLARK COUNTY AREA NEVADA.

Chris Knight 07/20/17
 CHRIS KNIGHT, DIRECTOR BUILDING & SAFETY DEPARTMENT OF PLANNING DATE

THIS PLAN CONFORMS TO THE APPLICABLE STANDARDS OF THE PLANNING DEPARTMENT.

Las Vegas Fire & Rescue 7-13-17
 LAS VEGAS FIRE & RESCUE DATE

Don Heade 07/17/17
 LAS VEGAS VALLEY WATER DISTRICT PROJECT#125654 SHEETS C1, C2, C3, AND C6 DATE

Patricia Gray 6-13-17
 NEVADA POWER D.B.A. NV ENERGY DATE

NV ENERGY ACKNOWLEDGES THAT WE HAVE RECEIVED YOUR PLANS AND WILL PROVIDE SERVICE TO ALL ELECTRICAL NEEDS ASSOCIATED WITH THIS PROJECT. NEVADA POWER COMPANY RESERVES THE RIGHT TO ADDRESS ANY EXISTING OR FUTURE CONFLICTS ONCE THE FINAL DESIGN IS COMPLETED. THE NEW SERVICE AND THE RESOLUTION OF ANY CONFLICTS WILL BE ACCOMPLISHED PURSUANT TO THE NEVADA PUBLIC UTILITY COMMISSION'S RULES AND REGULATIONS.

Centurylink 6-13-17
 CENTRAL TELEPHONE COMPANY, D.B.A. CENTURYLINK DATE

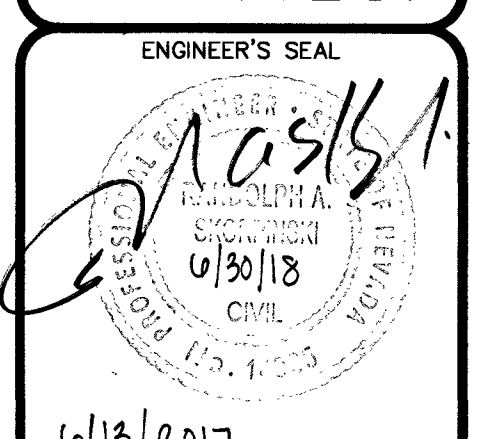
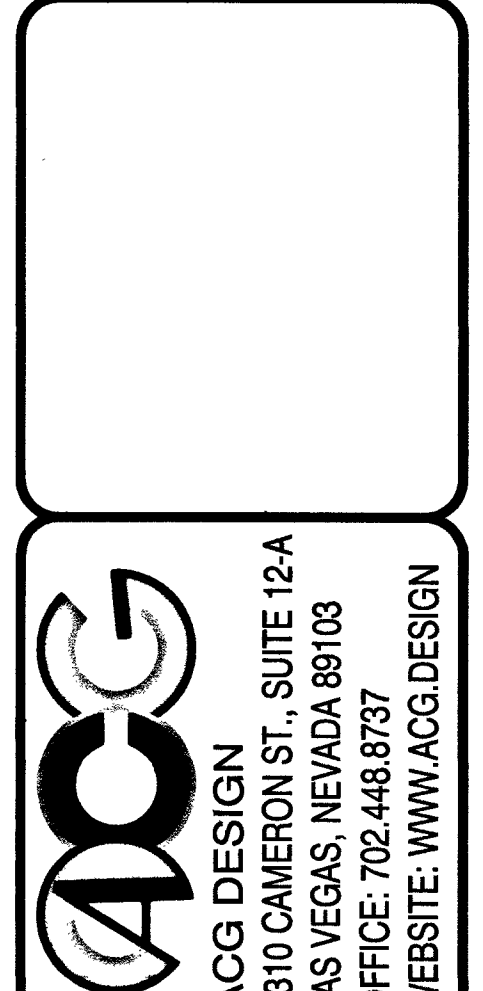
THE AFFIXED CENTRAL TELEPHONE COMPANY, D.B.A. CENTURYLINK APPROVAL DOES NOT ASSUME OR GUARANTEE LIABILITY FOR KNOWN OR UNKNOWN CONFLICTS WITH EXISTING OR PROPOSED IMPROVEMENTS. RESOLUTION OF ANY CONFLICT WILL BE ACCOMPLISHED PURSUANT TO LOCAL ORDINANCES, NEVADA REVISED STATUTES AND/OR PUBLIC UTILITY COMMISSION RULES AND REGULATIONS.

Cox Communications 6-13-17
 COX COMMUNICATIONS LAS VEGAS, INC. DATE

Southwest Gas 6-15-17
 SOUTHWEST GAS CORPORATION DATE

APPROVAL	DESCRIPTION	APPROV. BY	DATE

DOGGIE DISTRICT - W. CRAIG ROAD
 IMPROVEMENT PLANS
 COVER SHEET
 7083 WEST CRAIG ROAD
 LAS VEGAS, NEVADA 89129



DATE: 04/27/17
 PROJ. NO: 160236
 DRAWN BY: ARB
 CHECKED BY: RAS
 SCALE: AS NOTED
 JURISDICTION: CLV

DRAWING NUMBER:
C1
 SHEET 1 OF 9
 AGENCY NUMBER:
 CIVIL # L-70498
 CLV # PRC-69431

PROJECT: current/Commercial Clients/Nelson Tressler/160183 Doggie District - West Craig Rd/Engineering/Civil Drawings/Improvement Plans/160183-C1-CV.dwg, 6/12/2017 3:23:03 PM

CITY OF LAS VEGAS GENERAL NOTES:

- 1. ALL CONSTRUCTION AND MATERIALS SHALL BE IN ACCORDANCE WITH THE "UNIFORM STANDARD SPECIFICATIONS FOR PUBLIC WORKS CONSTRUCTION OFF-SITE IMPROVEMENTS, CLARK COUNTY AREA NEVADA", LATEST ISSUE; THE "UNIFORM STANDARD DRAWINGS FOR PUBLIC WORKS CONSTRUCTION, CLARK COUNTY AREA NEVADA", LATEST REVISED EDITION; THE "SUMMERLIN IMPROVEMENT STANDARDS" FOR WORK IN THE SUMMERLIN AREA; AND OTHER APPLICABLE APPROVED STANDARDS ISSUED BY THE CONTROLLING AGENCY; THE UNIFORM BUILDING CODE; AND ALL LOCAL CITY CODES AND ORDINANCES APPLICABLE, EXCEPT AS NOTED ON THIS SHEET AS "DEVIATIONS FROM STANDARDS".

CITY OF LAS VEGAS SEWER NOTES:

- 1. ALL CONSTRUCTION AND MATERIALS SHALL BE IN ACCORDANCE WITH THE LATEST EDITION OF THE DESIGN AND CONSTRUCTION STANDARDS FOR WASTEWATER COLLECTION SYSTEMS AND THE UNIFORM STANDARD SPECIFICATIONS FOR PUBLIC WORKS' CONSTRUCTION OFF-SITE IMPROVEMENTS, CLARK COUNTY AREA, NEVADA, AS AMENDED. IT WILL BE THE RESPONSIBILITY OF THE CONTRACTOR TO BE AWARE OF THE CONTENTS OF THE ABOVE SPECIFICATIONS.

LAS VEGAS VALLEY WATER DISTRICT STANDARD NOTES: LVVWD PROJECT # 125054

- 1. NO WORK SHALL BEGIN UNTIL THE WATER PLANS HAVE BEEN APPROVED FOR CONSTRUCTION BY THE LVVWD. FOLLOWING WATER PLAN APPROVAL, NOTICE SHALL BE GIVEN TO THE LVVWD COMMUNICATIONS SUPPORT CENTER (258-7171) TWO (2) WORKING DAYS PRIOR TO THE START OF CONSTRUCTION. FOR FUTURE INSPECTIONS, NOTICE MUST BE GIVEN BY 2:00 P.M. THE BUSINESS DAY PRIOR TO THE REQUESTED LVVWD INSPECTION. WHEN REQUESTING INSPECTIONS, PLEASE REFER TO THE PROJECT # IDENTIFIED ABOVE.

DEVIATIONS:

NONE

LAS VEGAS FIRE & RESCUE GENERAL NOTES FOR HYDRANTS AND ACCESS:

- 1. ALL WORK SHALL BE DONE IN STRICT ACCORDANCE WITH THE LAS VEGAS FIRE AND RESCUE ADOPTED FIRE CODE ORDINANCE # 6325 FOR HYDRANT SPECIFICATIONS AND HYDRANT INSTALLATION SPECIFICATIONS.

EFFECTIVE DATE: MARCH 1st, 2016

FAST logo with phone numbers: 1-702-432-5300, 1-702-227-2929, 1-800-227-2600. Includes text: 'Call before you Dig', 'Call before you Dig', 'Call before you Dig'.

CITY OF LAS VEGAS GRADING NOTES:

- 1. IN THE EVENT THAT ANY UNFORESEEN CONDITIONS NOT COVERED BY THESE NOTES ARE ENCOUNTERED DURING GRADING OPERATIONS, THE OWNER/ENGINEER SHALL BE IMMEDIATELY NOTIFIED FOR DIRECTION.

CITY OF LAS VEGAS TRAFFIC NOTES

- 1. ALL CONSTRUCTION SIGNING, BARRICADING, AND TRAFFIC DELINEATION SHALL CONFORM TO THE "MANUAL ON UNIFORM TRAFFIC CONTROL DEVICES", LATEST EDITION.

REVISED 04/15/10

APPROVED FOR CONSTRUCTION

Signature of Don Meade, LAS VEGAS VALLEY WATER DISTRICT ENGINEERING SERVICES MANAGER. PROJECT NO. 0711771, DATE: 07/17/17. Includes signature of K. W. and date 7-15-17.

Approval table with columns: APPROVAL, REVISIONS, DOGGIE DISTRICT - W. CRAIG ROAD IMPROVEMENT PLANS, GENERAL NOTES, 7083 WEST CRAIG ROAD LAS VEGAS, NEVADA 89129, ACG DESIGN logo, ENGINEER'S SEAL, DRAWING NUMBER: C2, SHEET 2 OF 9, AGENCY NUMBER: CIVIL # L-70498, CLV # PRC-69431.

Z:\projects\current\Commercial Clients\Nelson_Tresche\160163_Doggie District - West Craig Rd\Engineering\Civil Drawings\Improvement Plans\160163-C2-NTS.dwg, 01/22/2017 12:45:55 PM

ABBREVIATIONS

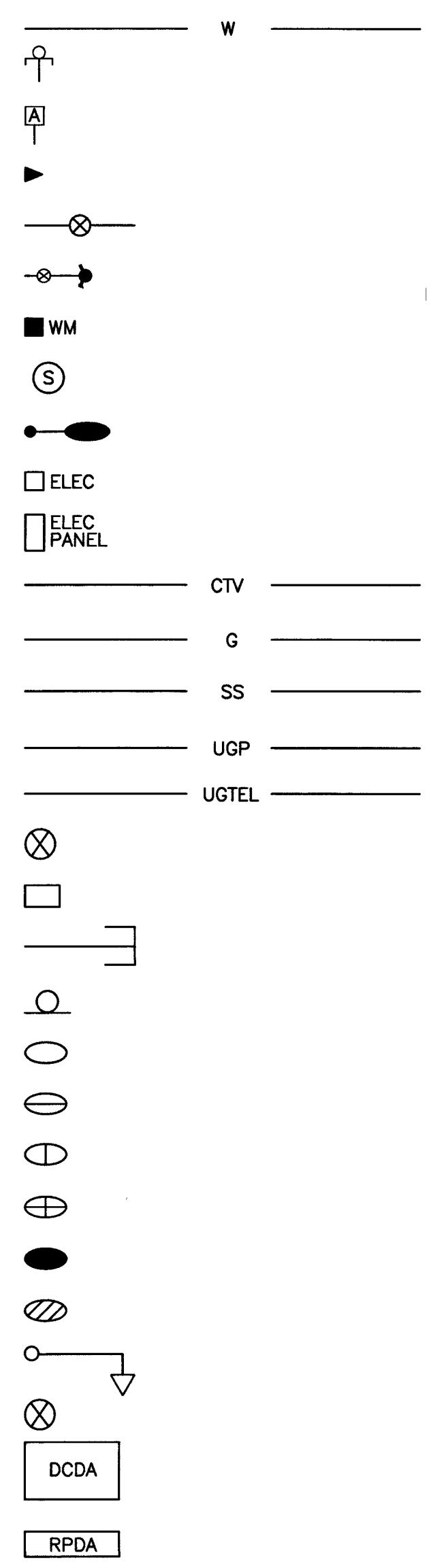
ABAN	ABANDON	GB	GRADE BREAK
AB	AGGREGATE BASE	GM	GAS METER
ABS	ABSOLUTE	GPM	GALLONS PER MINUTE
AC	ASPHALTIC CONCRETE	GRD	GRADE
ACKV	AUTOMATIC CHECK VALVE	GR	GRATE
ADA	AMERICAN DISABILITY ACT	GUT	GUTTER
ADDL	ADDITIONAL	GV	GATE VALVE
ADDM	ADDENDUM	HP	HIGH POINT
ADJ	ADJUSTABLE	IN	INCH
AGG	AGGREGATE	INSTR	INSTRUMENT
AL	ALUMINUM	INT	INTERIOR
AMT	AMOUNT	INV	INVERT
&	AND	IRR	IRRIGATION
ANSI	AMERICAN NATIONAL STANDARDS INSTITUTE	LEN OR L	LENGTH OF CURVATURE
APN	ASSESSOR PARCEL NUMBER	LF	LINEAR FOOT
APPROX	APPROXIMATE	LT	LEFT/LIGHT
APVVD	APPROVED	LWVD	LAS VEGAS VALLEY WATER DISTRICT
ASPH	ASPHALT	M	METER
ASSN	ASSOCIATION	MAX	MAXIMUM
ASSY	ASSEMBLY	N	NORTH
ASTM	AMERICAN SOCIETY OF TESTING MATERIALS	NAP	NOT-A-PART
AVE	AVENUE	NDOT	NEVADA DEPARTMENT OF TRANSPORTATION
AWWA	AMERICAN WATER WORKS ASSOCIATION	NE	NORTHEAST
BC	BOLT CIRCLE/BACK OF CURB	NG	NATURAL GROUND
BCR	BACK OF CURB RADIUS	NO. #	NUMBER
BDRY LINE	BOUNDARY LINE	NPC	NEVADA POWER COMPANY
BETW. B/W	BETWEEN	NTS	NOT TO SCALE
BK	BOOK/BACK	NW	NORTHWEST
BLDG	BUILDING	MH	MANHOLE
BLK	BLOCK	MIN	MINIMUM
BLM	BUREAU OF LAND MANAGEMENT	OHP	OVER HEAD POWER
BLVD	BOULEVARD	OHTEL	OVER HEAD TELEPHONE
BM	BENCHMARK	P	POLE/PRESSURE/PIPE/POWER
BO	BLOW OFF ASSEMBLY	P/L / R	PROPERTY LINE
BC, BOC	BACK OF CURB	PERP	PERPENDICULAR
BOT	BOTTOM	PG	PRESSURE GAGE
BW, BOW	BACK OF WALK	PKWY	PARKWAY
BPV	BACK PRESSURE VALVE	PSI	POUNDS PER SQUARE INCH
BRG	BEARING	PVC	POLYVINYL CHLORIDE PIPE
BS	BACK SIGHT	QTY	QUANTITY
BVC	BEGINNING OF VERTICAL CURVE	R	RADIUS
BSW	BACK OF SIDEWALK	(R)	RADIAL
C	CONDUIT	RPDA	REDUCED PRESSURE DETECTOR ASSEMBLY
C&G	CURB & GUTTER	RPPA	REDUCED PRESSURE PRINCIPLE ASSEMBLY
CAP	CAPACITY	RR	RAILROAD
CATV	CABLE TELEVISION	ROW, R/W	RIGHT OF WAY
CAV	COMBINATION AIR VALVE	S/C	SAW CUT
CC	CLARK COUNTY	SD	STORM DRAIN
CCWRD	CLARK COUNTY WATER RECLAMATION DISTRICT	SDMH	STORM DRAIN MANHOLE
CI	CAST IRON	SW, SDWK	SIDEWALK
CIP	CAST IRON PIPE/CAST IN PLACE	SE	SOUTHEAST
CR	CIRCLE	SEC	SECTION/SECOND(ARY)
CIRCUM	CIRCUMFERENCE	SHT	SHEET
CL OR C	CENTERLINE	SIG	SIGNAL
CO	COUNTY/COMPANY/CONTRACT	SF, SQ FT	SQUARE FOOT (FEET)
COL	COLUMN	SY, SQ YD	SQUARE YARD
CONC	CONCRETE	SS	SANITARY SEWER
CONST	CONSTRUCTION	ST	STREET
COR	CORNER	STA	STATION
CONC	CONCRETE	STD	STANDARD
CONN	CONNECTION	SL, STLT	STREET LIGHT
CONT	CONTINUE OR CONTINUOUS	SUR	SURVEY
CTR	CENTER	T	TELEPHONE/TANGENT
CU	CUBIC	TAN	TANGENT
CY	CUBIC YARD	TC	TOP OF CURB
D OR Δ	DELTA ANGLE	TF	TOP OF FOOTING
D/W	DRIVEWAY	TMH	TOP OF MANHOLE
DBO	DESIGNED BY OTHERS	TRW	TOP OF RETAINING WALL
DCSWCS	DESIGN AND CONSTRUCTION STANDARDS FOR WASTE WATER COLLECTION SYSTEMS	TOT	TOTAL
DEMO	DEMOLITION	TW	TOP OF WALL
DEPT	DEPARTMENT	TS	TRAFFIC SIGNAL
DET	DETAIL	TRANS	TRANSITION/TRANSMISSION
DEV	DEVELOPMENT	(TYP)	TYPICAL
DI	DROP INLET OR DUCTILE IRON	UDACS	UNIFORM DESIGN AND CONSTRUCTION STANDARDS
DIA OR Ø	DIAMETER	USD	UNIFORM STANDARD DRAWINGS
DIM	DIMENSION	VAR	VARIES
DIP	DUCTILE IRON PIPE	VC	VERTICAL CURVE
DIR	DIRECTION	VERT	VERTICAL
DIST	DISTANCE	VG	VALLEY GUTTER
DMH	DROP MANHOLE	W/	WITH
DOM	DOMESTIC	WM	WATER METER
DR	DRIVE	W	WATER
DWG	DRAWING	W.O.	WALL OPENING
DWY	DRIVEWAY	WV	WATER VALVE
E	EAST	YD	YARD
EC	EXISTING CONCRETE		
ECR	END OF CURVE RETURN		
EG	EXISTING GRADE		
EDC	END OF CURVE		
EOP	EDGE OF PAVEMENT		
EOS	EDGE OF SHOULDER		
ESMT	EASEMENT		
EVC	END OF VERTICAL CURVE		
EX	EXISTING		
FC	FACE OF CURB		
FF	FINISHED FLOOR		
FG	FINISHED GRADE		
FH	FIRE HYDRANT		
FL OR ¶	FLOW LINE		
FN	FENCE		
FOW	FACE OF WALL		
FTNR	FASTENER		
FT	FOOT OR FEET		
FUT	FUTURE		

NOTE:
THIS IS A STANDARD ABBREVIATION SHEET.
SOME ABBREVIATIONS MAY APPEAR ON THIS SHEET
BUT NOT USED IN THE PLANS. ALL ABBREVIATIONS
USED ON THE PLANS MUST APPEAR ON THIS SHEET.

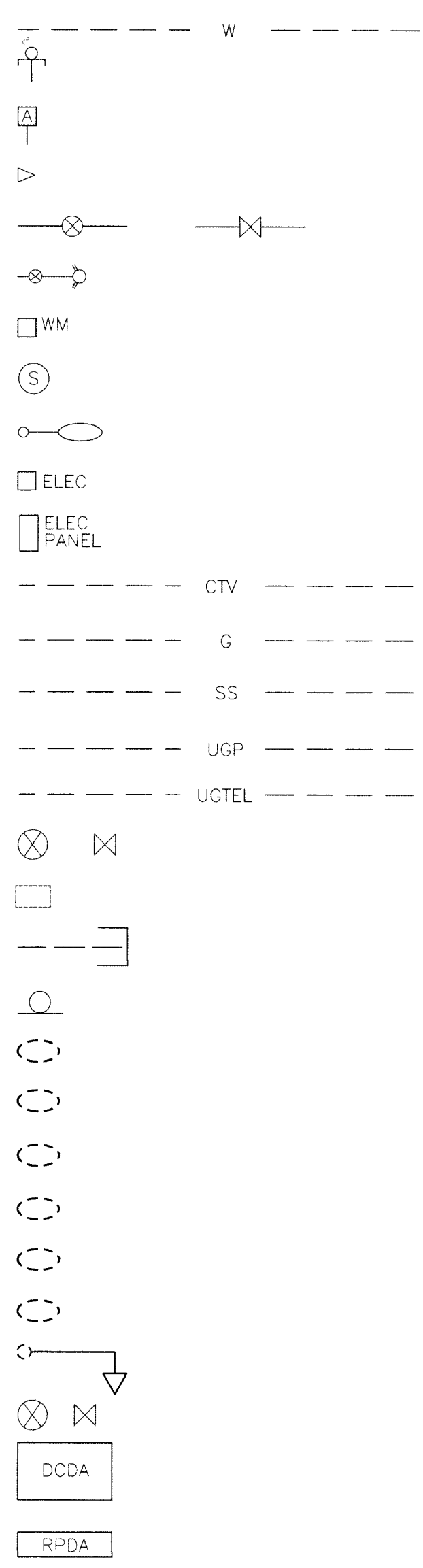
UTILITY

WATER PIPELINE	W
BLOWOFF	W
COMBINATION AIR VALVE	W
REDUCER	W
WATER VALVE	W
FIRE HYDRANT ASSEMBLY	W
WATER METER	W
SANITARY SEWER MANHOLE	W
STREET LIGHT (GENERIC SYMBOL NOT RELATED TO WATTAGE)	W
ELECTRICAL BOX	W
ELECTRICAL PANEL BOX	W
CABLE TV	W
GAS LINE	W
SANITARY SEWER	W
UNDERGROUND POWER	W
UNDERGROUND TELEPHONE	W
VALVE (INITIALS INDICATE OWNERSHIP AND/ OR TYPE)	W
UTILITY BOX (INITIALS INDICATE OWNER AND / OR TYPE)	W
UTILITY STUB-OUT	W
TRAFFIC CONTROL SIGN	W
100 W LUMINAIRE	W
150 W LUMINAIRE	W
200 W LUMINAIRE	W
250 W LUMINAIRE	W
400 W LUMINAIRE	W
750 W LUMINAIRE	W
TRAFFIC SIGNAL POLE	W
GATE VALVE	W
DOUBLE CHECK DETECTOR ASSEMBLY (DCDA)	W
REDUCED PRESSURE DETECTOR ASSEMBLY (RPDA)	W

PROPOSED



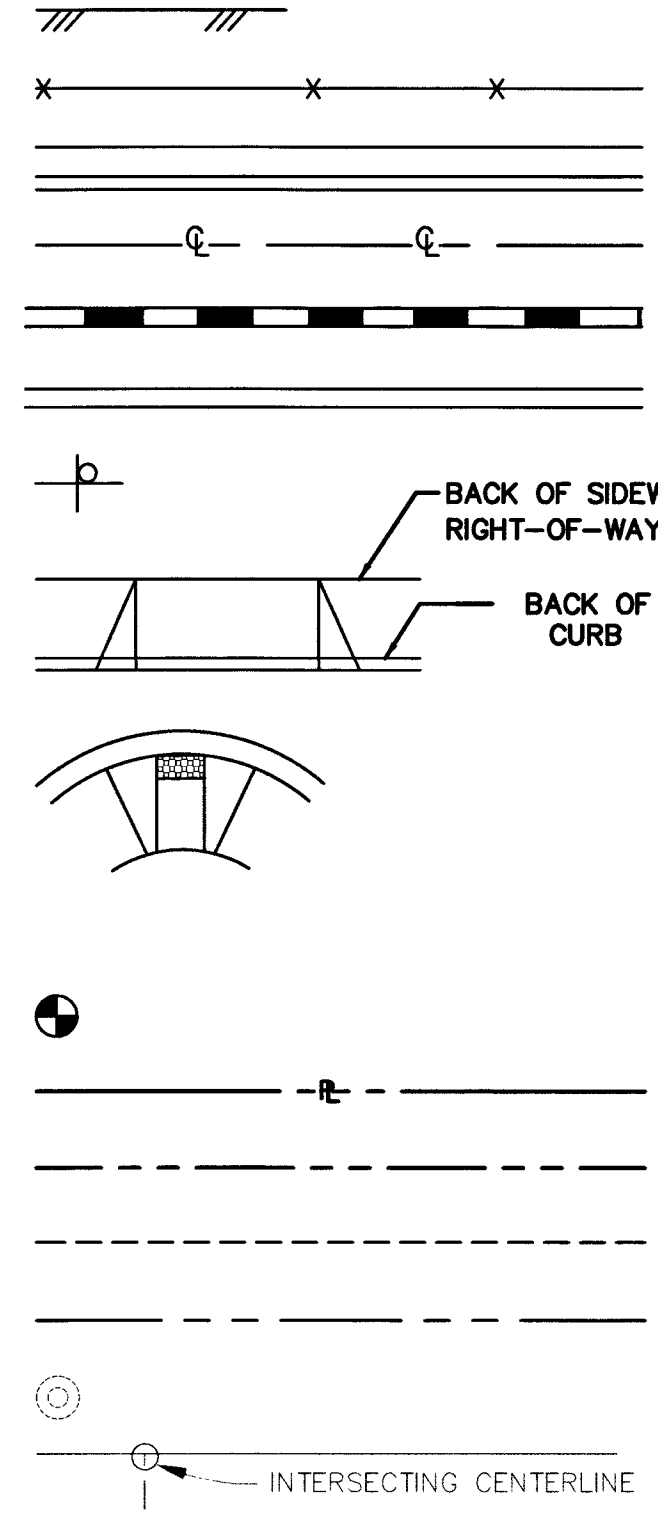
EXISTING



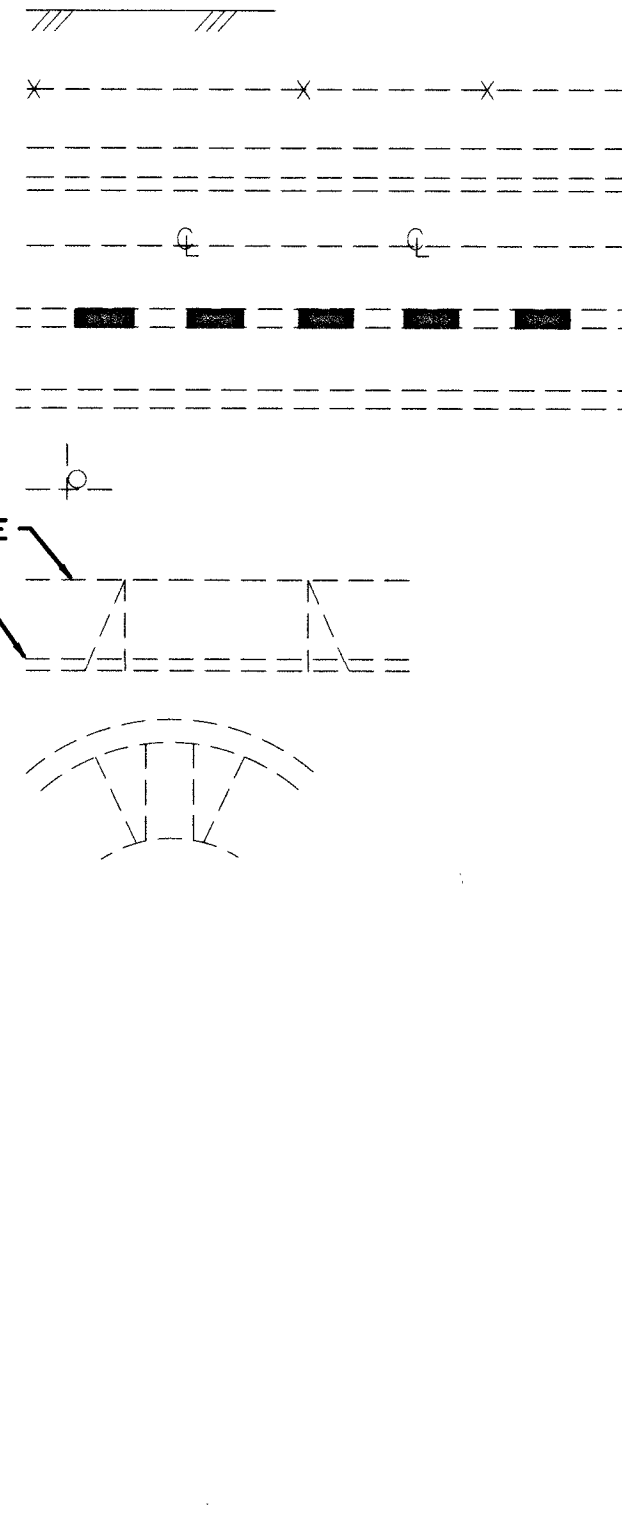
GEOMETRIC

EDGE OF PAVEMENT	W
FENCE	W
CURB, GUTTER AND SIDEWALK	W
CENTER LINE	W
BLOCK WALL/RETAINING WALL	W
SCREEN WALL	W
STREET NAME SIGN	W
DRIVEWAY	W
WHEELCHAIR RAMP	W
SURVEY MONUMENT	W
PROPERTY LINE	W
RIGHT-OF-WAY LINE	W
PATENT RESERVATION OR EASEMENT LINE	W
SECTION LINE	W
CONCRETE MONUMENT	W
CONCRETE MONUMENT SURVEY LINE	W

PROPOSED



EXISTING



SITE PLAN

STEPS (NOTE TYPE AND NO. OF RISERS)

EXISTING BUILDING & FOUNDATION

MISCELLANEOUS

IDENTIFICATION HEXAGON
SAW CUT LINE-ASPHALT CONC. OR PCC CONC.

DRAINAGE / GRADING

STORM DRAIN MANHOLE (SIZE AS NOTED PER PLAN)

CONTOURS

STORM DRAIN (SIZE AS NOTED PER PLAN)

DIRECTION OF FLOW

FLOW LINE OF DITCH OR CHANNEL

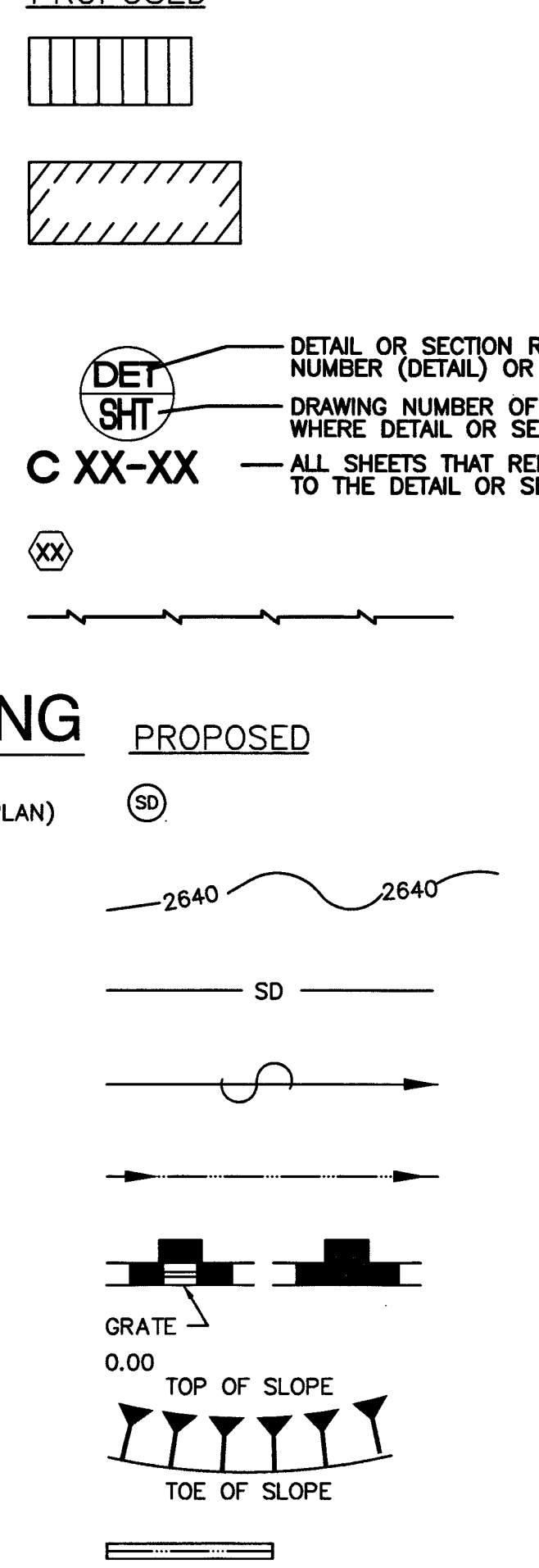
DROP INLET

ELEVATIONS

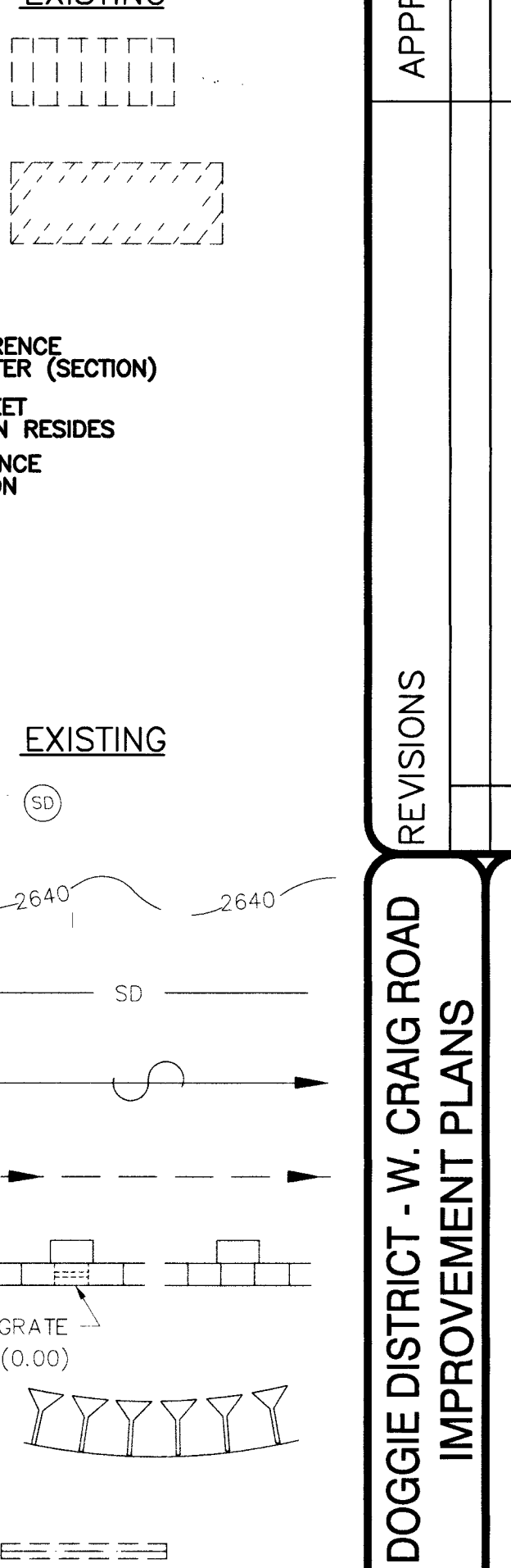
CUT OR FILL SLOPES

VALLEY GUTTER

PROPOSED



EXISTING



SPECIAL SURVEY LEGEND & ABBREVIATIONS

W	WATER PULLBOX/METER/SHUT OFF
E	ELECTRIC PULLBOX/METER/TRANSFORMER
T	TELEPHONE PULLBOX/HANDHOLE
FO	FIBER OPTIC PULLBOX/HANDHOLE
SL	SIGNAL LIGHT PULLBOX/HANDHOLE
TS	TRAFFIC SIGNAL PULLBOX/HANDHOLE
ICV	IRRIGATION CONTROL VALVE
SS	SANITARY SEWER PULLBOX/HANDHOLE
C	CATV PULLBOX/HANDHOLE
AL	AREA LIGHT PULLBOX/HANDHOLE
RB	RED BOX DVD RENTAL KIOSK

FW	FIRE HYDRANT
WV	WATER VALVE
GM	GAS METER
SS	SEWER MANHOLE
GV	GAS VALVE
SC	SEWER CLEANOUT
AL	AREA LIGHT
SL	STREET LIGHT
S	SIGN
IM	INTERCEPTOR MANHOLE
TW	TILE WALKWAY
DLA	DESERT LANDSCAPE AREA
CB	8" CONCRETE BOLLARD
TSP	TRAFFIC SIGNAL POLE
AL	AREA LIGHT
SM	STORM MANHOLE
SHR	SHRUB
FL	FLOWERS/PLANT
T	TREE
PT	PALM TREE
B	BUILDING COLUMN
TC	TRASH CAN

APPROVED FOR CONSTRUCTION
Dag Made
LAS VEGAS VALLEY WATER DISTRICT ENGINEERING SERVICES MANAGER
PROJECT NO. 125654 DATE: 07/17/17

APPROVAL		APPROVED BY	DATE
REVISIONS		REV	
DOGIE DISTRICT - W. CRAIG ROAD			
IMPROVEMENT PLANS			
LEGEND & ABBREVIATIONS			
7088 WEST CRAIG ROAD LAS VEGAS, NEVADA 89129			
ACG DESIGN			
4310 CAMERON ST., SUITE 12A LAS VEGAS, NEVADA 89103 OFFICE: 702.448.8737 WEBSITE: WWW.ACG.DESIGN			
ENGINEER'S SEAL			
RANDOLPH A. SKORPINSKI N.E.V.A. REGISTERED PROFESSIONAL ENGINEER CIVIL EXP. 06-30-18 No. 14925			
DATE:	04/27/17	PROJ. NO.:	160236
DRAWN BY:	ARB	CHECKED BY:	RAS
SCALE:	AS NOTED	JURISDICTION:	CLV
DRAWING NUMBER:	C3	SHEET:	3 OF 9
AGENCY NUMBER:	CIVIL # L-70498	CLV #	PRC-69431

PROJECT: Commercial Clients\Nelson_Tresketh\160163 Dogie District - West Craig Rd\Engineering\Civil Drawings\Improvement Plans\160163-C3-ABR-Long_6/12/2017 3:25:29 PM

FAST
Call before you Dig
Underground
1-702-432-5300

AVOID HITTING OVERHEAD POWER LINES. IT'S COSTLY.
CALL BEFORE YOU DIG
OVERHEAD
1-702-227-2929

Call before you Dig
Underground
1-800-227-2600

UTILITY NOTE

EXISTING UTILITY LOCATIONS SHOWN HEREON ARE APPROXIMATE ONLY. IT SHALL BE THE CONTRACTOR'S RESPONSIBILITY TO DETERMINE THE EXACT HORIZONTAL AND VERTICAL LOCATION OF ALL EXISTING UNDERGROUND AND OVERHEAD UTILITIES PRIOR TO COMMENCING CONSTRUCTION. NO REPRESENTATION IS MADE THAT ALL EXISTING UTILITIES ARE SHOWN HEREON. THE CONTRACTOR IS RESPONSIBLE FOR TAKING ALL APPROPRIATE PRECAUTIONARY MEASURES TO PROTECT EXISTING UTILITY LINES AND STRUCTURES BEFORE BEGINNING EXCAVATION. THE ENGINEER ASSUMES NO RESPONSIBILITY FOR UTILITIES NOT SHOWN OR UTILITIES NOT SHOWN IN THEIR PROPER LOCATION. CALL BEFORE YOU DIG: 1(800)227-2600 ALL SEWER/STORM DRAINS CROSSING WATER LINES MUST CONFORM TO SECTION 2.22 OF THE UNIFORM DESIGN AND CONSTRUCTION STANDARDS FOR POTABLE WATER SYSTEMS (UDACS) FOR WATER AND STORM MAIN CROSSINGS AND CLEARANCES.

LEGEND

- PROPOSED AC PAVEMENT
- PROPOSED CONCRETE

LEGAL DESCRIPTION

BEING A PORTION OF THE NORTHEAST QUARTER (NE 1/4) OF THE NORTHWEST (NW 1/4) OF THE SOUTHWEST QUARTER (SE 1/4) OF SECTION 3, TOWNSHIP 20 SOUTH, RANGE 60 EAST, MDM., CLARK COUNTY, NEVADA.

CONTAINING 3.53 ACRES MORE OR LESS.

BASIS OF BEARINGS

S89°47'29"E BEING THE BEARING OF THE CENTERLINE OF CRAIG ROAD AS SHOWN BY MAP THEREOF ON FILE IN BOOK 117 OF PLATS, PAGE 95 OF OFFICIAL RECORDS, CLARK COUNTY RECORDER'S OFFICE, CLARK COUNTY, NEVADA, LYING WITHIN SECTION 3, TOWNSHIP 20 SOUTH, RANGE 60 EAST, M.D.M., CITY OF LAS VEGAS, CLARK COUNTY, NEVADA.

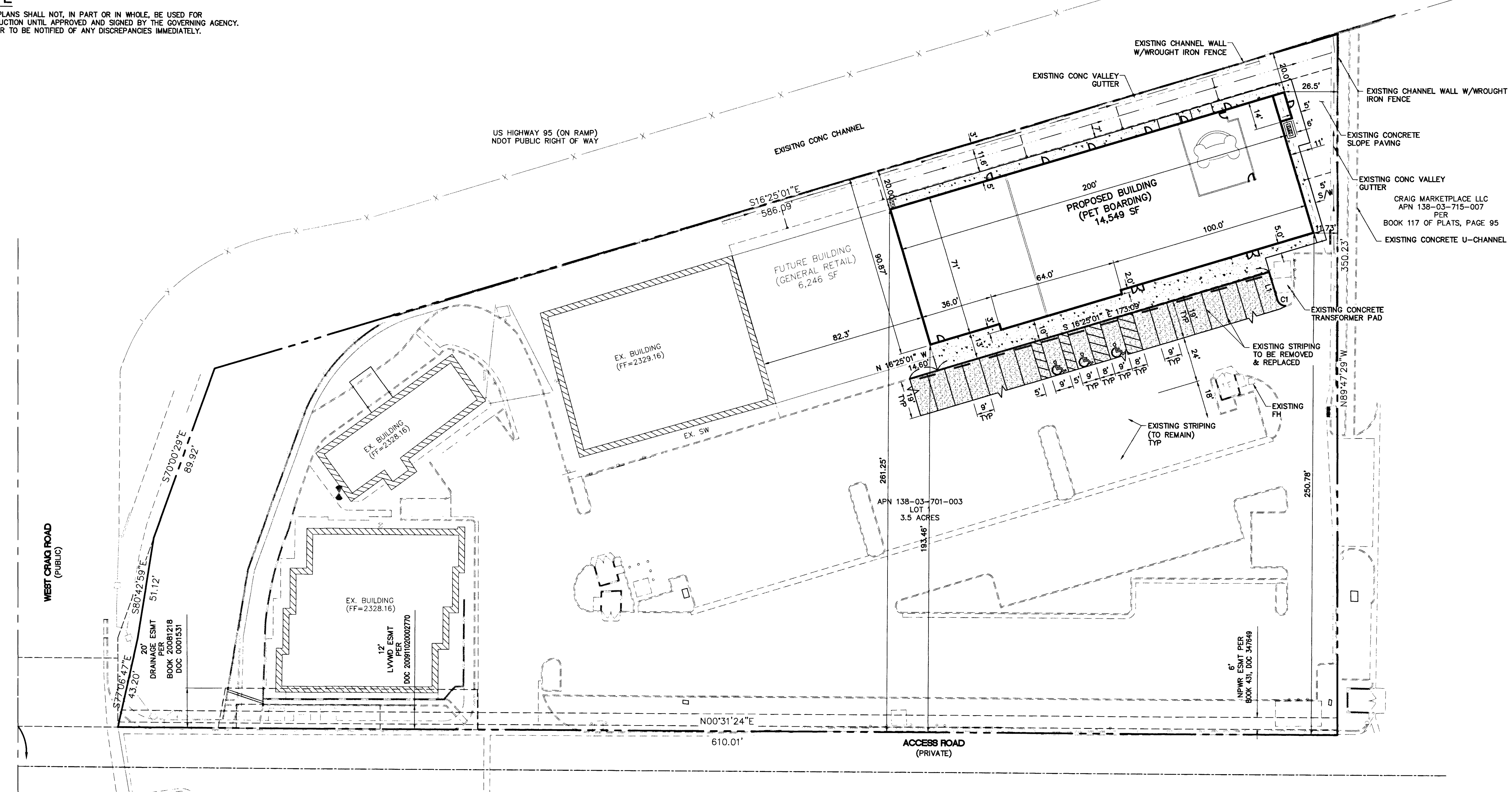
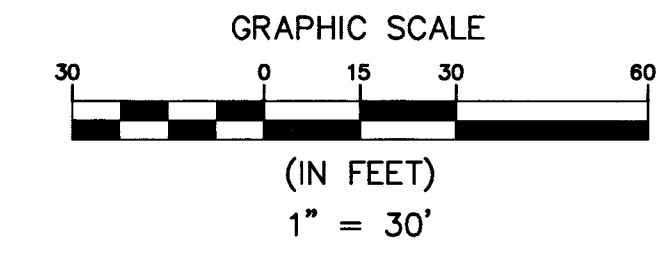
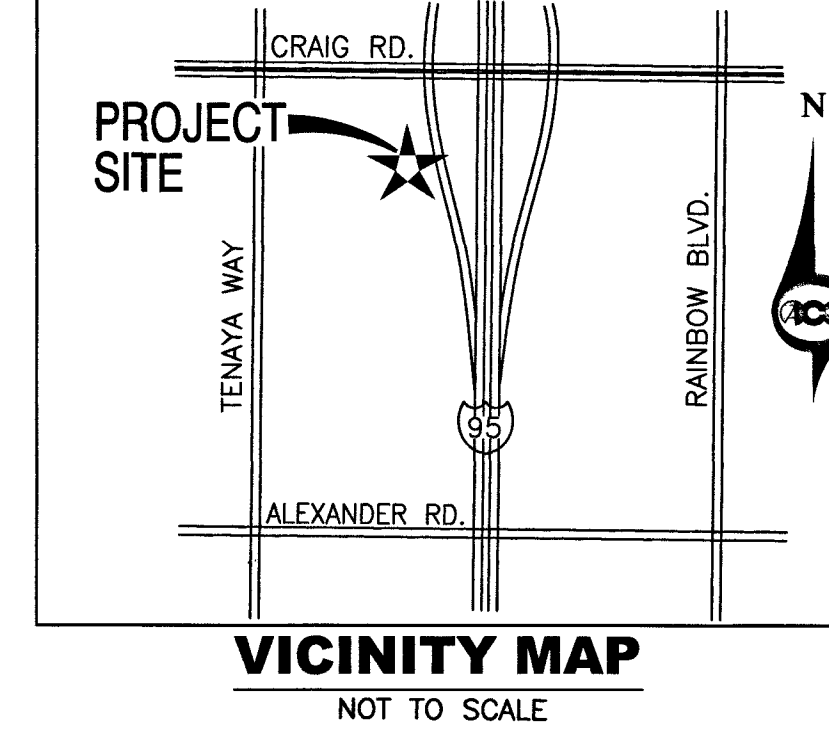
BENCHMARK

CITY OF LAS VEGAS BENCHMARK BLV00 3C4, BEING A RIVET AND PLATE IN TOP OF CURB AT THE NORTHEAST CORNER OF CRAIG ROAD AND TENAYA WAY.

ELEVATION = 2325.34 FEET
= 708.765 METERS

NOTE

THESE PLANS SHALL NOT, IN PART OR IN WHOLE, BE USED FOR CONSTRUCTION UNTIL APPROVED AND SIGNED BY THE GOVERNING AGENCY. ENGINEER TO BE NOTIFIED OF ANY DISCREPANCIES IMMEDIATELY.



BACK OF CURB LINE TABLE

LINE	LENGTH	BEARING
L1	14.75'	N73°31'39"E

BACK OF CURB CURVE TABLE

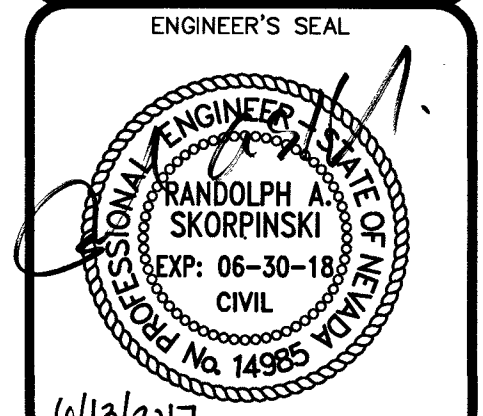
CURVE	RADIUS	LENGTH	TANGENT	DELTA
C1	4.00'	5.09'	2.96'	72°56'28"

CRAIG MARKETPLACE LLC
APN 138-03-715-007
PER
BOOK 117 OF PLATS, PAGE 95

REV.	DESCRIPTION	APPROVED BY	DATE

DOGIE DISTRICT - W. CRAIG ROAD
IMPROVEMENT PLANS
HORIZONTAL CONTROL PLAN
7088 WEST CRAIG ROAD
LAS VEGAS, NEVADA 89129

ACG
ACG DESIGN
4310 CAMERON ST., SUITE 12-A
LAS VEGAS, NEVADA 89103
OFFICE: 702.448.8737
WEBSITE: WWW.ACG.DESIGN



DATE: 04/27/17
PROJ. NO: 160236
DRAWN BY: ARB
CHECKED BY: RAS
SCALE: AS NOTED
JURISDICTION: CLV

DRAWING NUMBER:
C4
10706932
SHEET 4 OF 9
AGENCY NUMBER:
CIVIL # L-70498
CLV # PRC-69431



UTILITY NOTE

EXISTING UTILITY LOCATIONS SHOWN HEREON ARE APPROXIMATE ONLY. IT SHALL BE THE CONTRACTOR'S RESPONSIBILITY TO DETERMINE THE EXACT HORIZONTAL AND VERTICAL LOCATION OF ALL EXISTING UNDERGROUND AND OVERHEAD UTILITIES PRIOR TO COMMENCING CONSTRUCTION. NO REPRESENTATION IS MADE THAT ALL EXISTING UTILITIES ARE SHOWN HEREON. THE CONTRACTOR IS RESPONSIBLE FOR TAKING ALL APPROPRIATE PRECAUTIONARY MEASURES TO PROTECT EXISTING UTILITY LINES AND STRUCTURES BEFORE BEGINNING EXCAVATION. THE ENGINEER ASSUMES NO RESPONSIBILITY FOR UTILITIES NOT SHOWN OR UTILITIES NOT SHOWN IN THEIR PROPER LOCATION. CALL BEFORE YOU DIG: 1(800)227-2600 ALL SEWER/STORM DRAINS CROSSING WATER LINES MUST CONFORM TO SECTION 2.22 OF THE UNIFORM DESIGN AND CONSTRUCTION STANDARDS FOR POTABLE WATER SYSTEMS (UDACS) FOR WATER AND STORM MAIN CROSSINGS AND CLEARANCES.

HANDICAP ACCESSIBILITY NOTE:

CONTRACTOR TO COMPLY WITH ALL ADA REQUIREMENTS. IF CONTRACTOR FINDS DISCREPANCIES WITH ANY INFORMATION INDICATED ON THESE PLANS, ACG DESIGN IS TO BE NOTIFIED BY CONTRACTOR IMMEDIATELY.

GEOTECHNICAL REPORT

ALL GRADING AND EARTHWORK SHALL CONFORM TO THE GEOTECHNICAL REPORT:
 TITLE:
 GEOTECHNICAL INVESTIGATION
 COMMERCIAL BUILDINGS IN RETAIL CENTER
 LOCATED AT SOUTHWEST CORNER OF CRAIG ROAD AND US 95 ACCESS RAMP
 LAS VEGAS, NEVADA
 ENGINEER:
 NOVA GEOTECHNICAL & INSPECTION SERVICES
 PROJECT NO. 20072283E1
 DATED: JANUARY 21, 2008
 GES, INC
 UPDATED: FEBRUARY 17, 2017

ROOF DRAIN OUTLET NOTE:

REFER TO ARCHITECTURAL PLANS FOR THE TREATMENT OF ROOF DRAIN OUTLET SPLASH AREA.

LEGEND

PROPOSED AC PAVEMENT

PROPOSED CONCRETE

LEGAL DESCRIPTION

BEING A PORTION OF THE NORTHEAST QUARTER (NE 1/4) OF THE NORTHWEST (NW 1/4) OF THE SOUTHWEST QUARTER (SE 1/4) OF SECTION 3, TOWNSHIP 20 SOUTH, RANGE 60 EAST, MDM., CLARK COUNTY, NEVADA.

BASIS OF BEARINGS

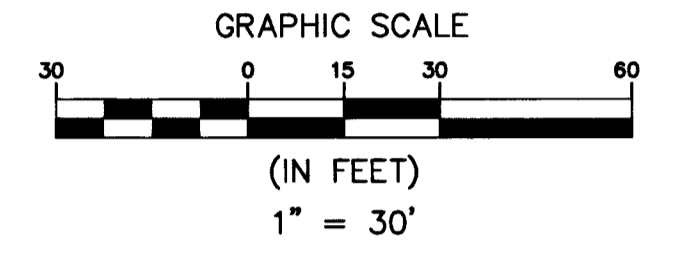
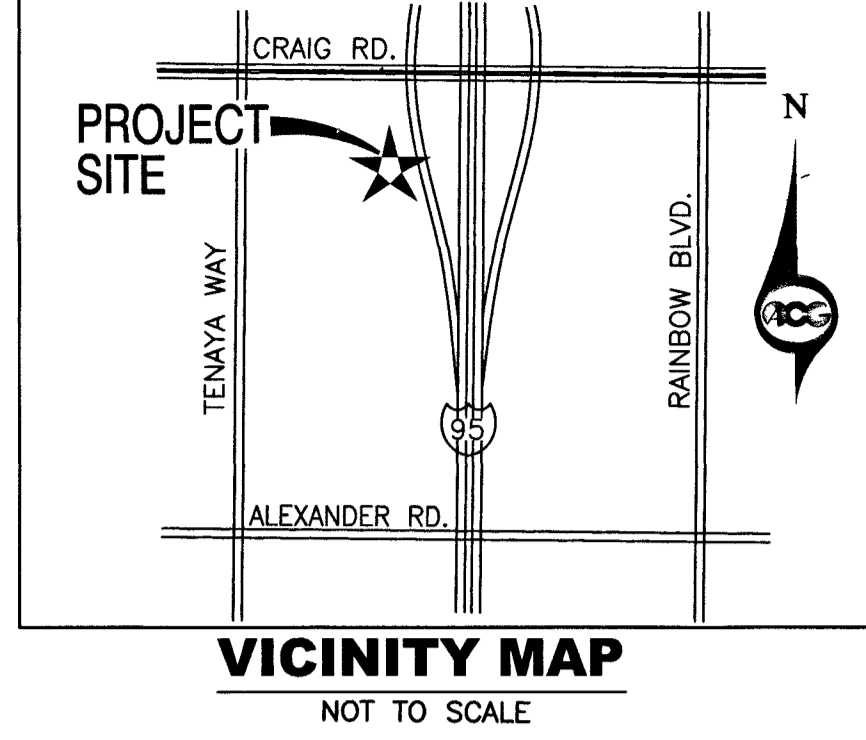
S89°47'29"E BEING THE BEARING OF THE CENTERLINE OF CRAIG ROAD AS SHOWN BY MAP THEREOF ON FILE IN BOOK 117 OF PLATS, PAGE 95 OF OFFICIAL RECORDS, CLARK COUNTY RECORDER'S OFFICE, CLARK COUNTY, NEVADA, LYING WITHIN SECTION 3, TOWNSHIP 20 SOUTH, RANGE 60 EAST, M.D.M., CITY OF LAS VEGAS, CLARK COUNTY, NEVADA.

BENCHMARK

CITY OF LAS VEGAS BENCHMARK BLV00 304, BEING A RIVET AND PLATE IN TOP OF CURB AT THE NORTHEAST CORNER OF CRAIG ROAD AND TENAYA WAY.
 ELEVATION = 2325.34 FEET
 = 708.765 METERS

FLOOD NOTE:

FEMA MAP 32003C2155F, DATED NOVEMBER 16, 2011, NOT YET REVISED TO REFLECT LOMR (CASE NO. 12-09-0091P), EFFECTIVE DATE NOVEMBER 17, 2011. PER LOMR, THIS PROPERTY WAS REMOVED FROM THE FLOOD ZONE, AND IS NOW IN UNSHADED ZONE "X", AREAS DETERMINED TO BE OUTSIDE THE 0.2% ANNUAL CHANCE FLOODPLAIN.



SITE DEMOLITION NOTES

- 1 REMOVE AND REPLACE EXISTING AC PAVEMENT.
- 2 REMOVE CONCRETE SLOPE PAVING.
- 3 REMOVE AND REPLACE EXISTING CONCRETE CURB.
- 4 REMOVE AND REINSTALL EXISTING SIGNS.
- 5 EXISTING PAVEMENT MARKINGS REMOVED BY PAVEMENT REMOVAL RESTRIPE TO MATCH EXISTING.
- 6 REMOVE AND REINSTALL EXISTING CONCRETE BUMPER BLOCKS.
- 7 SAWCUT EXISTING SLOPE PAVEMENT.

CONSTRUCTION NOTES

- 1 SAWCUT AND MATCH EXISTING.
- 2 CONSTRUCT MODIFIED "A" TYPE CURB PER DETAIL 1, SHEET CB.
- 3 CONSTRUCT ZERO FACE CURB PER DETAIL 4, SHEET CB.
- 4 CONSTRUCT ON-SITE CONCRETE SIDEWALK PER DETAIL 3, SHEET CB.
- 5 CONSTRUCT 2" AC ON-SITE PAVEMENT OVER 8" TYPE II AGGREGATE BASE. SCARIFY AND RE-COMPACT TOP 6" OF EXPOSED SOIL TO MIN. 95% DENSITY. REFER TO DETAIL 2, SHEET CB.
- 6 ADJUST EXISTING SSMH COVER TO FINISHED GRADE PER DCSWS DWG NO. 50-5.
- 7 TRANSITION MODIFIED "A" TYPE CURB FROM ZERO INCH CURB FACE TO 6 INCH CURB FACE.
- 8 CONSTRUCT LANDSCAPE RETAINING WALL.
- 9 PROPOSED LANDSCAPE AREA DESIGNED BY OTHERS. COORDINATE WITH OWNER.
- 10 CONSTRUCT SIDEWALK DRAIN PER USD NO. 236.
- 11 INSTALL BLOCK WALL OPENING PER ARCHITECTURAL PLANS. INTERIOR SPACE TO DRAIN OUT OF BLOCK WALL OPENING AND THRU SIDEWALK DRAIN.
- 12 FLOW LINE OF SWALE.
- 13 LOWER SIDEWALK 4-INCHES TO ALLOW INTERIOR COURTYARD/POOL AREA TO DRAIN OUT BOTTOM OF GATE.

NOTE

THESE PLANS SHALL NOT, IN PART OR IN WHOLE, BE USED FOR CONSTRUCTION UNTIL APPROVED AND SIGNED BY THE GOVERNING AGENCY. ENGINEER TO BE NOTIFIED OF ANY DISCREPANCIES IMMEDIATELY.

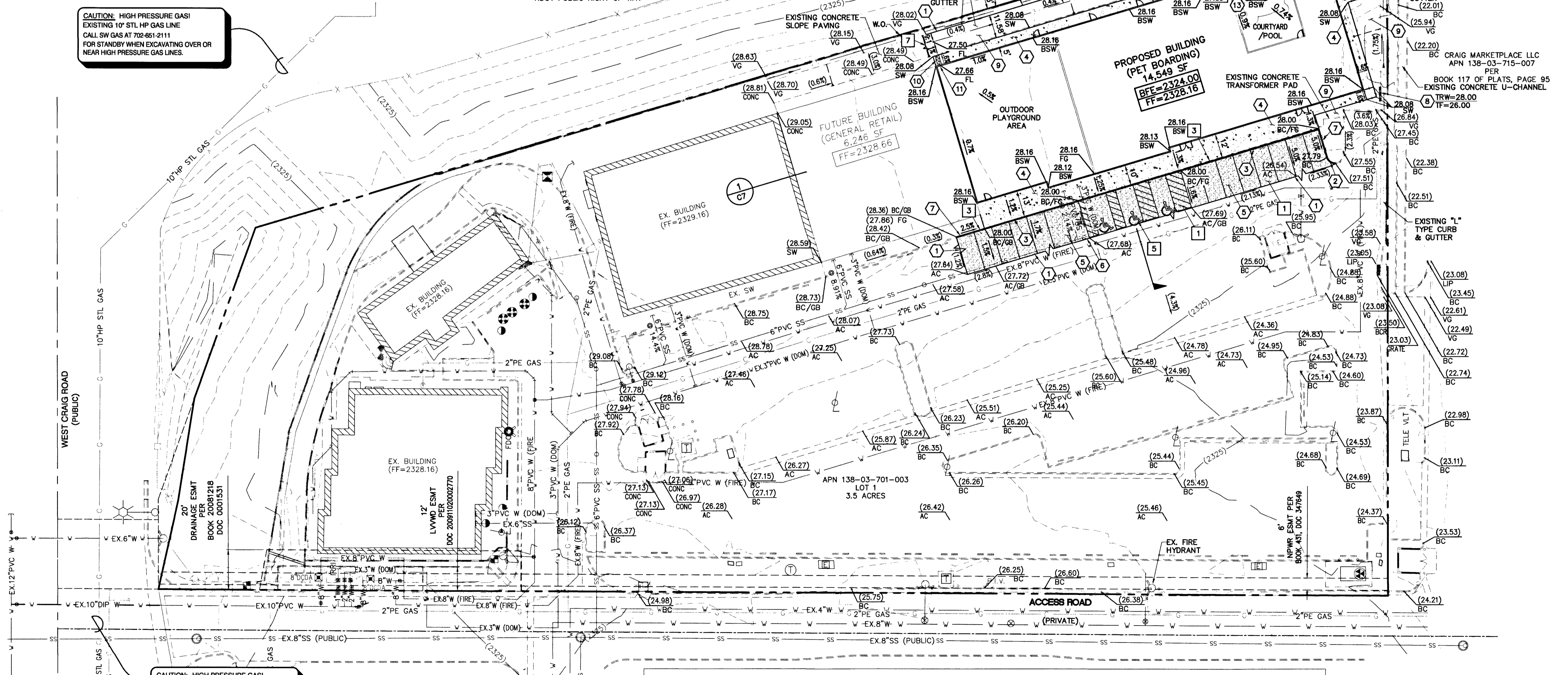
NOTE

SITE IS NOT LOCATED WITHIN A FEMA SPECIAL FLOOD HAZARD AREA PER LOMR CASE # 12-09-0091P EFFECTIVE NOV. 17, 2011. SITE IS IN ZONE X.

LAND DISTURBANCE NOTE

TOTAL PLANNED AREA OF LAND DISTURBANCE = 0.633 ACRES.

CAUTION: HIGH PRESSURE GAS!
 EXISTING 10" STL HP GAS LINE
 CALL SW GAS AT 702-651-2111
 FOR STANDBY WHEN EXCAVATING OVER OR NEAR HIGH PRESSURE GAS LINES.



APPROVAL	REVISIONS	DESCRIPTION	APPRD. BY	DATE

DOGIE DISTRICT - W. CRAIG ROAD IMPROVEMENT PLANS

GRADING PLAN

7083 WEST CRAIG ROAD
LAS VEGAS, NEVADA 89129

ACG
 ACG DESIGN
 4310 CAMERON ST., SUITE 12-A
 LAS VEGAS, NEVADA 89103
 OFFICE: 702.448.8737
 WEBSITE: WWW.ACG.DESIGN

ENGINEER'S SEAL

 6/13/17
 DATE: 04/27/17
 PROJ. NO: 160236
 DRAWN BY: ARB
 CHECKED BY: RAS
 SCALE: AS NOTED
 JURISDICTION: CLV

DRAWING NUMBER:
C5
 101016123
 SHEET 5 OF 9
 AGENCY NUMBER:
 CIVIL # L-70498
 CLV # PRC-69431

CRAIG MARKETPLACE LLC
 APN 138-03-715-007
 PER
 BOOK 117 OF PLATS, PAGE 95

I CERTIFY THAT THIS GRADING PLAN CONFORMS TO THE APPROVED DRAINAGE STUDY FOR THIS SITE ON FILE AT THE CITY OF LAS VEGAS.
 DS 4288
 6/13/17
 RANDOLPH SKORPINSKI, P.E.
 DATE

Z:\projects\current\Commercial\Nelson\resilient\60163 Dogie District - West Craig Rd\Engineering\Civil Drawings\Improvement Plans\160163-C5-GR.dwg, 6/13/2017 11:56:51 AM

FIRE FLOW CALCULATIONS

	PROP. BLDG: PET BOARDING	FUT. BLDG: GENERAL RETAIL
- BASED ON:		
- SQUARE FOOTAGE	14,549 SF	6,246 SF
- NO. OF UNITS (ROOMS)	N/A	N/A
- LARGEST AREA BETWEEN SEPARATION WALL	N/A	N/A
- NUMBER OF STORES	1	1
- TYPE OF CONSTRUCTION	V-B (IBC)	V-B (IBC)
- EXPOSURES	N/A	N/A
- HIGH PILED STORAGE	NO	NO
- FIRE SPRINKLER SYSTEM	YES	YES
- FLOW REQUIRED @ 20 PSI RESIDUAL	3250 GPM	2250 GPM
- ADJ FIRE FLOW (50% REDUCTION)	1625 GPM	1500 GPM (MIN.)

LEGEND

- PROPOSED AC PAVEMENT
- PROPOSED CONCRETE

LEGAL DESCRIPTION

BEING A PORTION OF THE NORTHEAST QUARTER (NE 1/4) OF THE NORTHWEST (NW 1/4) OF THE SOUTHWEST QUARTER (SE 1/4) OF SECTION 3, TOWNSHIP 20 SOUTH, RANGE 60 EAST, MDM., CLARK COUNTY, NEVADA.

CONTAINING 3.53 ACRES MORE OR LESS.

BASIS OF BEARINGS

S89°47'29"E BEING THE BEARING OF THE CENTERLINE OF CRAIG ROAD AS SHOWN BY MAP THEREOF ON FILE IN BOOK 117 OF PLATS, PAGE 95 OF OFFICIAL RECORDS, CLARK COUNTY RECORDER'S OFFICE, CLARK COUNTY, NEVADA, LYING WITHIN SECTION 3, TOWNSHIP 20 SOUTH, RANGE 60 EAST, M.D.M., CITY OF LAS VEGAS, CLARK COUNTY, NEVADA.

BENCHMARK

CITY OF LAS VEGAS BENCHMARK BLV00 3C4, BEING A RIVET AND PLATE IN TOP OF CURB AT THE NORTHEAST CORNER OF CRAIG ROAD AND TENAYA WAY.

ELEVATION = 2325.34 FEET
= 708.765 METERS

EX. UTILITY DISCLAIMER NOTE:

NO REPRESENTATION IS MADE THAT ALL EXISTING UTILITIES ARE SHOWN HEREON. ACG DESIGN ASSUMES NO RESPONSIBILITY FOR UTILITIES NOT SHOWN OR UTILITIES NOT SHOWN IN THEIR PROPER LOCATION. EXISTING UNDERGROUND UTILITIES SHOWN HEREON ARE APPROXIMATE ONLY AND HAVE BEEN SHOWN AS A BEST GUESS BASED ON THE SURVEYED SURFACE FEATURES. CONFLICTING AS-BUILT INFORMATION WAS FOUND FOR THIS PROJECT. CALL BEFORE YOU DIG: 1(800)227-2600. THE CONTRACTOR WILL BE REQUIRED TO LOCATE ALL EXISTING UNDERGROUND UTILITIES AND DETERMINE IF THE DESIGN SHOWN CAN BE ACCOMMODATED. IF NOT, IT SHALL BE THE CONTRACTOR'S RESPONSIBILITY TO NOTIFY THE ENGINEER AND PROVIDE A MAP OF THE EXISTING UTILITIES FOUND, TO INCLUDE EXACT HORIZONTAL AND VERTICAL LOCATIONS AND SIZE OF PIPE. AFTER WHICH, AN ADJUSTED UTILITY DESIGN WILL BE PROVIDED. THE CONTRACTOR IS RESPONSIBLE FOR TAKING ALL APPROPRIATE PRECAUTIONARY MEASURES TO PROTECT EXISTING UTILITY LINES AND STRUCTURES BEFORE BEGINNING EXCAVATION.

NOTE

THESE PLANS SHALL NOT, IN PART OR IN WHOLE, BE USED FOR CONSTRUCTION UNTIL APPROVED AND SIGNED BY THE GOVERNING AGENCY. ENGINEER TO BE NOTIFIED OF ANY DISCREPANCIES IMMEDIATELY.

EXISTING REDUCED PRESSURE DETECTOR ASSEMBLY (RPDA) (2) 8"

THE EXISTING REDUCED PRESSURE DETECTOR ASSEMBLY HAS BEEN INSTALLED IN ACCORDANCE WITH THE UDACS PLATE NO. 59. ANY BLOCK WALL OR OTHER FENCE MATERIAL SHALL BE DESIGNED AND CONSTRUCTED AROUND THE OUTSIDE OF THE EASEMENT(S) TO ALLOW DIRECT ACCESS TO THE ASSEMBLIES FROM THE ADJACENT RIGHT-OF-WAY.

EXISTING REDUCED PRESSURE PRINCIPLE ASSEMBLY (2) 2", (1) 1"

APPROVED REDUCED PRESSURE PRINCIPLE ASSEMBLY(S) HAVE BEEN INSTALLED PER THE UDACS PLATE NO. 8. ANY BLOCK WALL OR OTHER FENCE MATERIAL SHALL BE DESIGNED AND CONSTRUCTED AROUND THE OUTSIDE OF THE EASEMENT(S) TO ALLOW DIRECT ACCESS FROM THE ADJACENT RIGHT-OF-WAY.

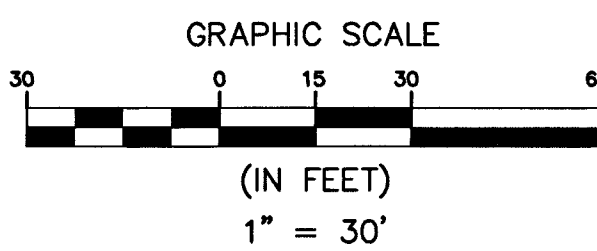
FAST
Call before you Dig
UnderGround
1-702-432-5300
PREMIER AND INTEGRAL SYSTEM OF TRANSPORTATION

AVOID HITTING OVERHEAD POWER LINES. IT'S COSTLY.

CALL BEFORE YOU DIG
OVERHEAD
1-702-227-2929

Call before you Dig
AVOID HITTING UNDERGROUND UTILITY LINES. IT'S COSTLY.

Call 811
1-800-227-2600



UTILITY NOTE

EXISTING UTILITY LOCATIONS SHOWN HEREON ARE APPROXIMATE ONLY. IT SHALL BE THE CONTRACTOR'S RESPONSIBILITY TO DETERMINE THE EXACT HORIZONTAL AND VERTICAL LOCATION OF ALL EXISTING UNDERGROUND AND OVERHEAD UTILITIES PRIOR TO COMMENCING CONSTRUCTION. NO REPRESENTATION IS MADE THAT ALL EXISTING UTILITIES ARE SHOWN HEREON. THE CONTRACTOR IS RESPONSIBLE FOR TAKING ALL APPROPRIATE PRECAUTIONARY MEASURES TO PROTECT EXISTING UTILITY LINES AND STRUCTURES BEFORE BEGINNING EXCAVATION. THE ENGINEER ASSUMES NO RESPONSIBILITY FOR UTILITIES NOT SHOWN OR UTILITIES NOT SHOWN IN THEIR PROPER LOCATION. CALL BEFORE YOU DIG: 1(800)227-2600 ALL SEWER/STORM DRAINS CROSSING WATER LINES MUST CONFORM TO SECTION 2.22 OF THE UNIFORM DESIGN AND CONSTRUCTION STANDARDS FOR POTABLE WATER SYSTEMS (UDACS) FOR WATER AND STORM MAIN CROSSINGS AND CLEARANCES.

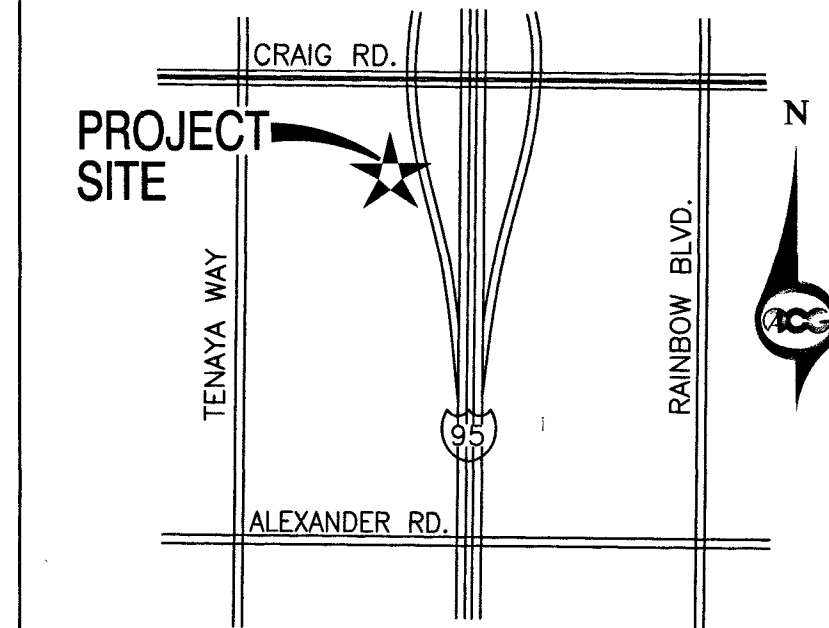
SEWER DESIGN NOTE

EXISTING SANITARY SEWER INVERTS ARE BASED ON AS-BUILT INFORMATION GATHERED. CONTRACTOR TO FIELD INVESTIGATE ALL EXISTING INVERT ELEVATIONS AND TO ADJUST THE DESIGN AS REQUIRED TO MAINTAIN A 2% MINIMUM SLOPE IN THE SEWER PIPE AWAY FROM THE BUILDING. CONTRACTOR TO CONTACT CIVIL ENGINEER IF DESIGN CONSTRAINTS CAN NOT BE MAINTAINED.

SITE SANITARY SEWER SYSTEM PRIVATELY OWNED AND MAINTAINED.

COMMERCIAL SUBDIVISION - SEWER NOTE "C" PER UDC 19.16.060.W.

A COMMON ELEMENT OF THE COMMERCIAL SUBDIVISION WHICH IS PRIVATELY OWNED AND WHICH IS MAINTAINED IN ACCORDANCE WITH A JOINT USE AGREEMENT APPLICABLE TO THE SUBDIVISION.



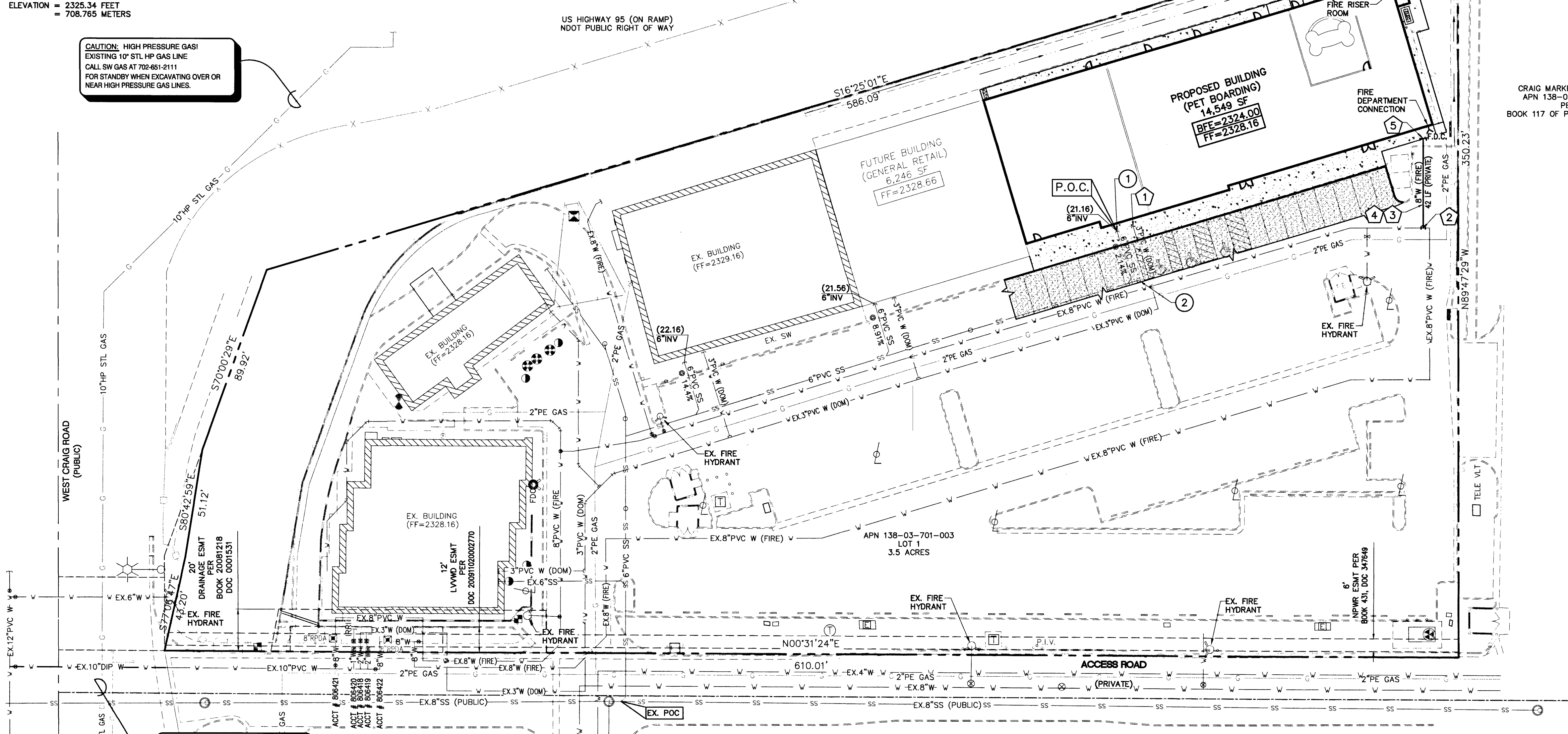
WATER CONSTRUCTION NOTES

- REFER TO UDACS 3RD EDITION, 2010
- 1 EXISTING 3-INCH PVC WATER STUB FOR DOMESTIC WATER CONNECTION.
- 2 CUT EXISTING WATER LINE AND INSTALL 8"X8" TEE AND THRUST BLOCK. REFER TO UDACS PLATE NO. 31. COORDINATE WATER SHUT OFF WITH OWNER.
- 3 INSTALL 8-INCH PVC CLASS 150 WATERLINE (FIRE).
- 4 TRENCH AND BACKFILL PER UDACS PLATE NO. 17.
- 5 STUB & CAP WATER LATERAL 5- FEET FROM BUILDING.

SEWER CONSTRUCTION NOTES

- REFER TO DCSWCS - SOUTHERN NEVADA-2009, 3RD EDITION
- 1 EXISTING 6" PVC SEWER STUB FOR BUILDING SEWER SERVICE.
- 2 ADJUST EX. SEWER CLEAN OUT TO GRADE PER GRADING PLANS.

CAUTION: HIGH PRESSURE GAS!
EXISTING 10" STL HP GAS LINE
CALL SW GAS AT 702-651-2111
FOR STANDBY WHEN EXCAVATING OVER OR NEAR HIGH PRESSURE GAS LINES.



CAUTION: HIGH PRESSURE GAS!
EXISTING 10" STL HP GAS LINE
CALL SW GAS AT 702-651-2111
FOR STANDBY WHEN EXCAVATING OVER OR NEAR HIGH PRESSURE GAS LINES.

CRAIG MARKETPLACE LLC
APN 138-03-715-007
PER
BOOK 117 OF PLATS, PAGE 95

CRAIG MARKETPLACE LLC
APN 138-03-715-007
PER
BOOK 117 OF PLATS, PAGE 95

APPROVALS

CHRIS KNIGHT, DIRECTOR - BUILDING & SAFETY DEPARTMENT DATE
THIS PLAN CONFORMS TO THE APPLICABLE STANDARDS OF THE PLANNING DEPARTMENT.
[Signature]
LAS VEGAS FIRE & RESCUE DATE 7-15-17

APPROVED FOR CONSTRUCTION

[Signature]
Las Vegas Valley Water District Engineering Services Manager
Date 07/17/17 Project No. 125654
LVWD Approved Fire Flow 1,625 GPM at 20 PSI Residual

APPROVAL	REVISIONS	DESCRIPTION	APPRVD. BY	DATE

DOGIE DISTRICT - W. CRAIG ROAD IMPROVEMENT PLANS
UTILITY PLAN
7083 WEST CRAIG ROAD
LAS VEGAS, NEVADA 89129

ACG DESIGN
4310 CAMERON ST., SUITE 12-A
LAS VEGAS, NEVADA 89103
OFFICE: 702.448.8737
WEBSITE: WWW.ACG.DESIGN

ENGINEER'S SEAL
[Signature]
RANDOLPH SKORPINSKI
EXP. 06-30-18
CIVIL
STATE OF NEVADA
LICENSE No. 14985
6/13/17

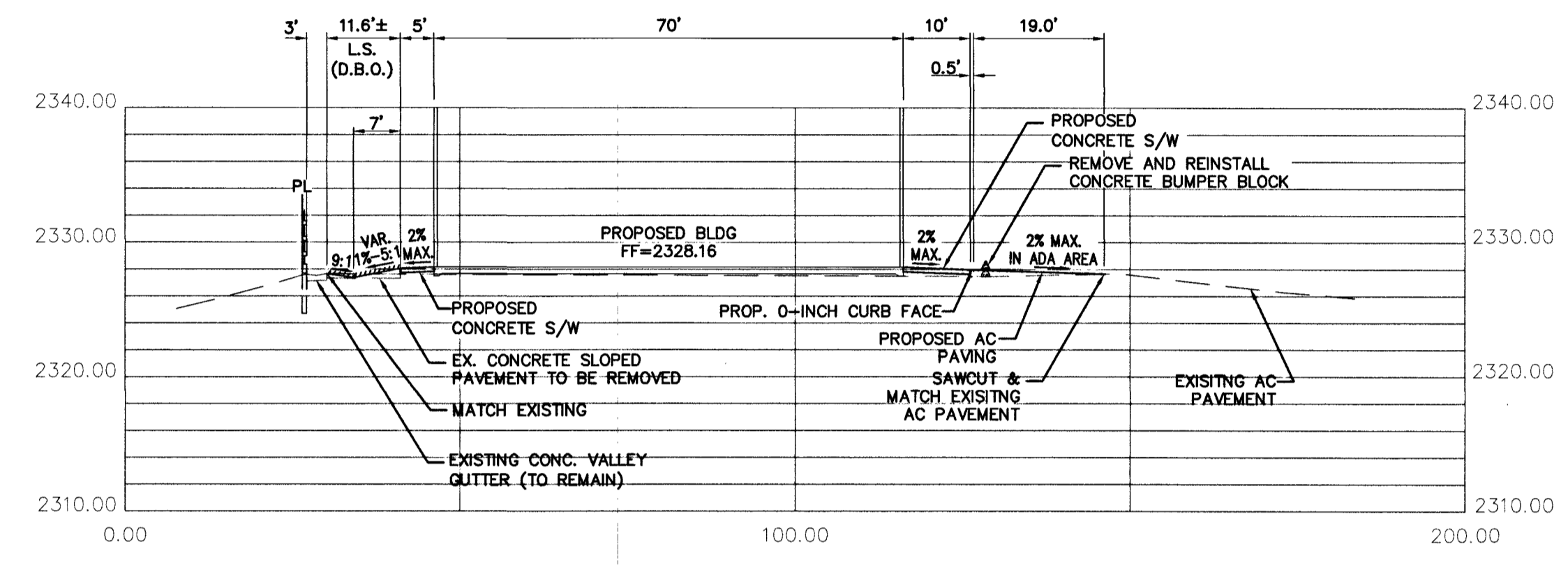
DATE: 04/27/17
PROJ. NO: 160236
DRAWN BY: ARB
CHECKED BY: RAS
SCALE: AS NOTED
JURISDICTION: CLV

DRAWING NUMBER:
C6
SHEET 6 OF 9
AGENCY NUMBER:
CIVIL # L-70498
CLV # PRC-69431

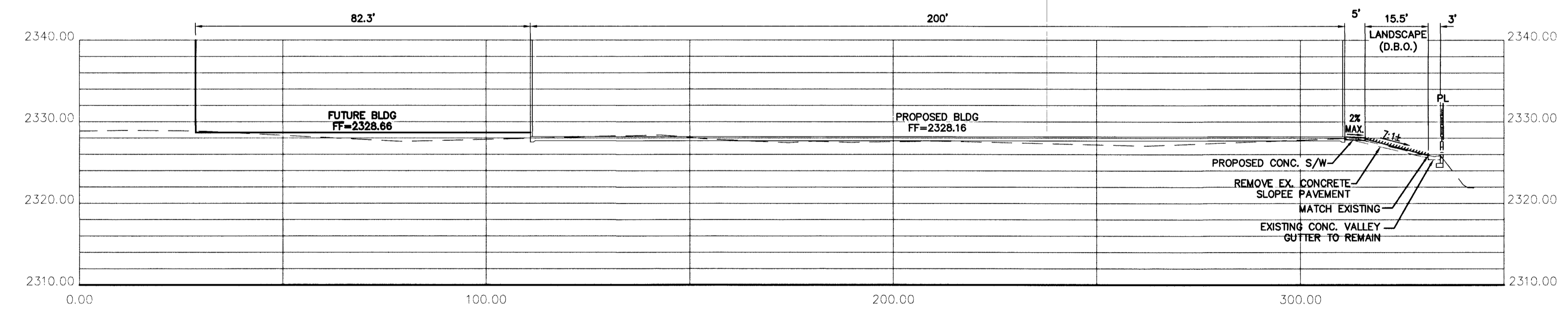
PROJ#: 125654 QS:138-03-9E

LANDSCAPE NOTE:

LANDSCAPE AREAS NOTED HEREIN ARE FOR LOCATION IDENTIFICATION ONLY. THESE IMPROVEMENTS ARE NOT TO BE USED FOR ANY SPECIFIC LANDSCAPE DESIGN INFORMATION. (DBO: DESIGNED BY OTHERS)



SECTION 2
NTS



SECTION 1
NTS

APPROVAL	REVISIONS	DESCRIPTION	REV.	APPRVD. BY	DATE

DOGIE DISTRICT - W. CRAIG ROAD IMPROVEMENT PLANS

CROSS SECTIONS

7083 WEST CRAIG ROAD
LAS VEGAS, NEVADA 89129

ACG
ACG DESIGN
4310 CAMERON ST., SUITE 12-A
LAS VEGAS, NEVADA 89103
OFFICE: 702.448.8737
WEBSITE: WWW.ACG.DESIGN

ENGINEER'S SEAL

BRANDOLENA SKORPINSKI
EXP: 06-30-18
CIVIL
STATE No. 14985

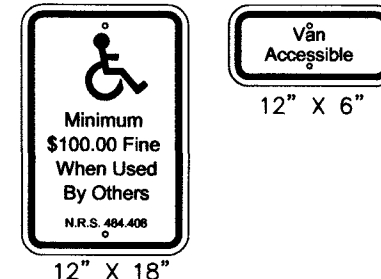
4/13/2017

DATE: 04/27/17
PROJ. NO: 160236
DRAWN BY: ARB
CHECKED BY: RAS
SCALE: AS NOTED
JURISDICTION: CLV

DRAWING NUMBER:
C7
SHEET 7 OF 9

AGENCY NUMBER:
CIVIL # L-70498
CLV # PRC-69431

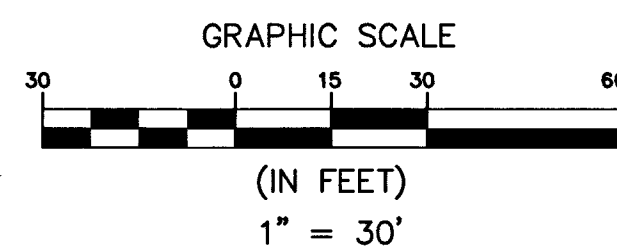
SIGNS LEGEND



NOTE: NEW SIGN POSTS TO BE INSTALLED PER CCAUSD NO. 249 OR MOUNTED TO STREET LIGHT POLE.

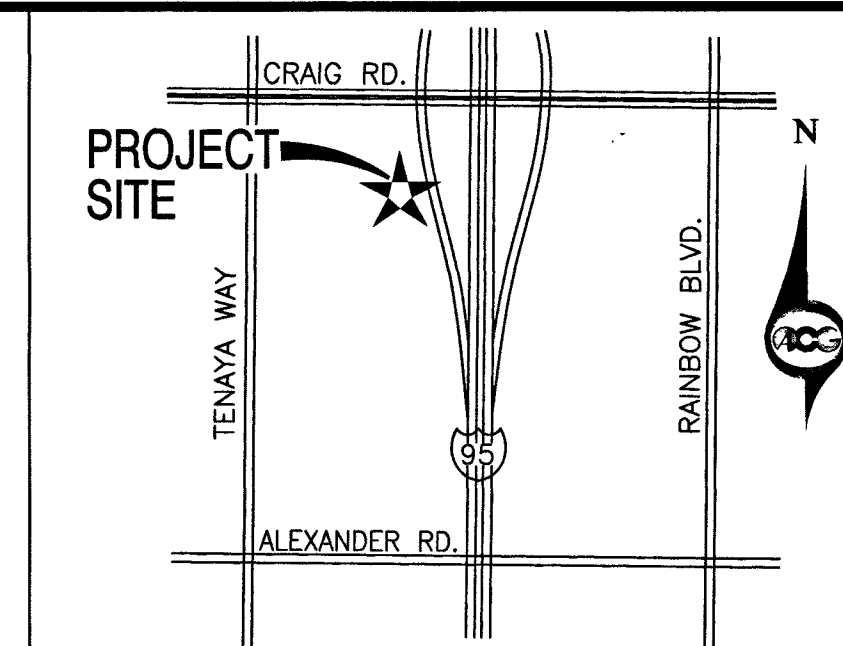
EX. UTILITY DISCLAIMER NOTE:

NO REPRESENTATION IS MADE THAT ALL EXISTING UTILITIES ARE SHOWN HEREON. ACG DESIGN ASSUMES NO RESPONSIBILITY FOR UTILITIES NOT SHOWN OR UTILITIES NOT SHOWN IN THEIR PROPER LOCATION. EXISTING UNDERGROUND UTILITIES SHOWN HEREON ARE APPROXIMATE ONLY AND HAVE BEEN SHOWN AS A BEST GUESS BASED ON THE SURVEYED SURFACE FEATURES. CONFLICTING AS-BUILT INFORMATION WAS FOUND FOR THIS PROJECT. CALL BEFORE YOU DIG: 1(800)227-2600. THE CONTRACTOR WILL BE REQUIRED TO LOCATE ALL EXISTING UNDERGROUND UTILITIES AND DETERMINE IF THE DESIGN SHOWN CAN BE ACCOMMODATED. IF NOT, IT SHALL BE THE CONTRACTOR'S RESPONSIBILITY TO NOTIFY THE ENGINEER AND PROVIDE A MAP OF THE EXISTING UTILITIES FOUND, TO INCLUDE EXACT HORIZONTAL AND VERTICAL LOCATIONS AND SIZE OF PIPE. AFTER WHICH, AN ADJUSTED UTILITY DESIGN WILL BE PROVIDED. THE CONTRACTOR IS RESPONSIBLE FOR TAKING ALL APPROPRIATE PRECAUTIONARY MEASURES TO PROTECT EXISTING UTILITY LINES AND STRUCTURES BEFORE BEGINNING EXCAVATION.

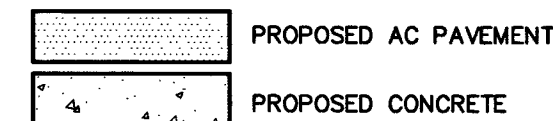


UTILITY NOTE

EXISTING UTILITY LOCATIONS SHOWN HEREON ARE APPROXIMATE ONLY. IT SHALL BE THE CONTRACTOR'S RESPONSIBILITY TO DETERMINE THE EXACT HORIZONTAL AND VERTICAL LOCATION OF ALL EXISTING UNDERGROUND AND OVERHEAD UTILITIES PRIOR TO COMMENCING CONSTRUCTION. NO REPRESENTATION IS MADE THAT ALL EXISTING UTILITIES ARE SHOWN HEREON. THE CONTRACTOR IS RESPONSIBLE FOR TAKING ALL APPROPRIATE PRECAUTIONARY MEASURES TO PROTECT EXISTING UTILITY LINES AND STRUCTURES BEFORE BEGINNING EXCAVATION. THE ENGINEER ASSUMES NO RESPONSIBILITY FOR UTILITIES NOT SHOWN OR UTILITIES NOT SHOWN IN THEIR PROPER LOCATION. CALL BEFORE YOU DIG: 1(800)227-2600 ALL SEWER/STORM DRAINS CROSSING WATER LINES MUST CONFORM TO SECTION 2.22 OF THE UNIFORM DESIGN AND CONSTRUCTION STANDARDS FOR POTABLE WATER SYSTEMS (UDACS) FOR WATER AND STORM MAIN CROSSINGS AND CLEARANCES.



LEGEND



LEGAL DESCRIPTION

BEING A PORTION OF THE NORTHEAST QUARTER (NE 1/4) OF THE NORTHWEST (NW 1/4) OF THE SOUTHEAST QUARTER (SE 1/4) OF SECTION 3, TOWNSHIP 20 SOUTH, RANGE 60 EAST, MDM., CLARK COUNTY, NEVADA.

CONTAINING 3.53 ACRES MORE OR LESS.

BASIS OF BEARINGS

S89°47'29"E BEING THE BEARING OF THE CENTERLINE OF CRAIG ROAD AS SHOWN BY MAP THEREOF ON FILE IN BOOK 117 OF PLATS, PAGE 95 OF OFFICIAL RECORDS, CLARK COUNTY RECORDER'S OFFICE, CLARK COUNTY, NEVADA, LYING WITHIN SECTION 3, TOWNSHIP 20 SOUTH, RANGE 60 EAST, M.D.M., CITY OF LAS VEGAS, CLARK COUNTY, NEVADA.

BENCHMARK

CITY OF LAS VEGAS BENCHMARK 8LV00 3C4, BEING A RIVET AND PLATE IN TOP OF CURB AT THE NORTHEAST CORNER OF CRAIG ROAD AND TENAYA WAY.

ELEVATION = 2325.34 FEET
= 708.765 METERS

NOTE

THESE PLANS SHALL NOT, IN PART OR IN WHOLE, BE USED FOR CONSTRUCTION UNTIL APPROVED AND SIGNED BY THE GOVERNING AGENCY. ENGINEER TO BE NOTIFIED OF ANY DISCREPANCIES IMMEDIATELY.

NOTE:

REPLACE ALL TRAFFIC CONTROL DEVICES (SIGNS OR PAVEMENT MARKINGS), UNDER CLV'S JURISDICTION, THAT ARE DISTURBED, DESTROYED, MOVED, OR MODIFIED BY TRENCHING ACTIVITY TO CLARK COUNTY'S SATISFACTION. ALL MATERIAL USED SHALL MEET CLARK COUNTY'S SPECIFICATIONS OR WILL BE AN APPROVED EQUIVALENT

NOTE:

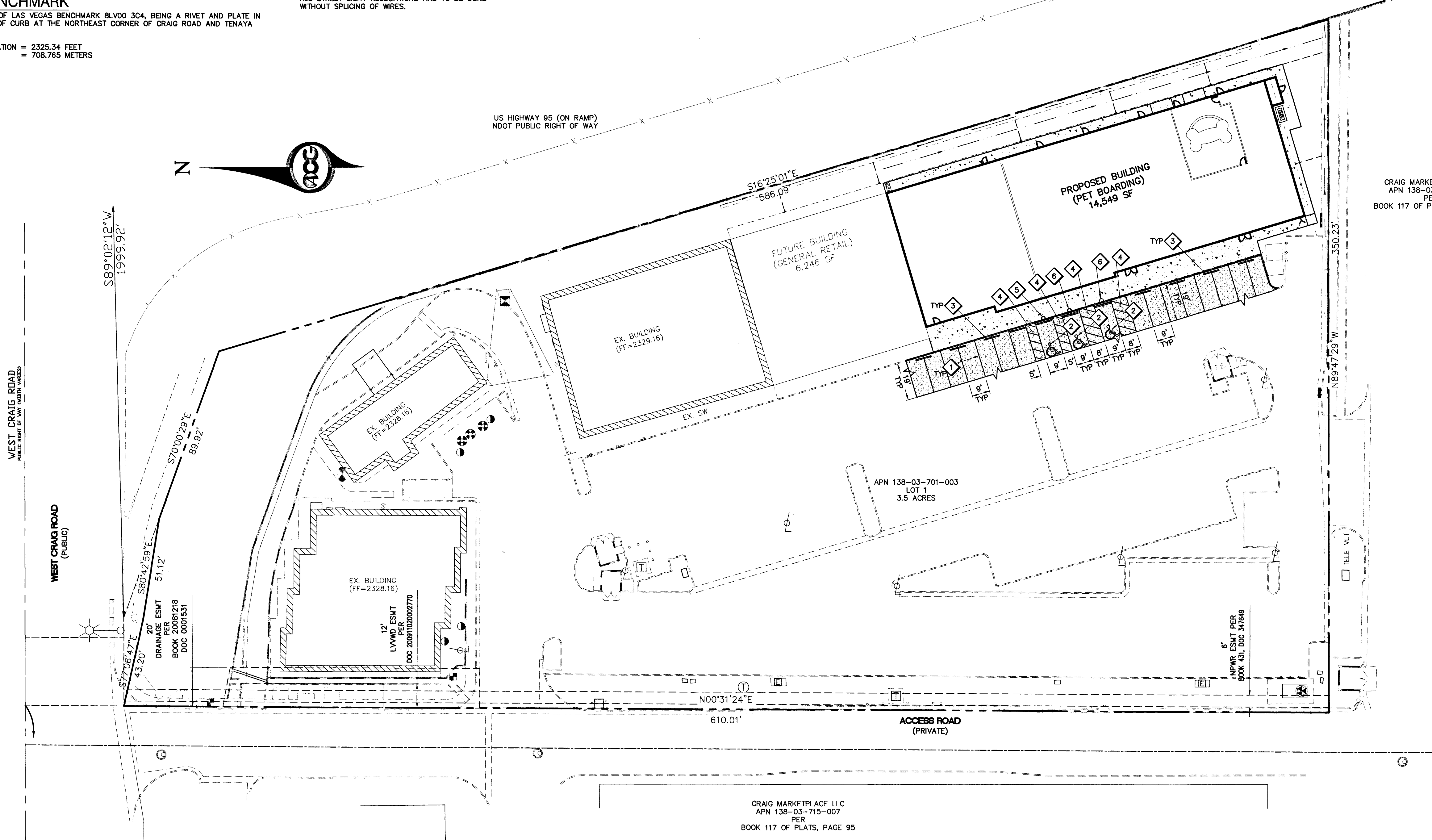
IN THE EVENT THAT THE TRAFFIC SIGNAL CONDUITS, LOOP DETECTORS OR ASSOCIATED EQUIPMENT ARE DAMAGED BY THE CONTRACTOR, THE CONTRACTOR WILL HIRE AN IMSA LEVEL II ELECTRICAL CONTRACTOR TO MAKE REPAIRS PER UNIFORM SPECIFICATIONS NO. 623.6.01.04.

NOTE:

ALL STREET LIGHT RELOCATIONS ARE TO BE DONE WITHOUT SPLICING OF WIRES.

TRAFFIC SIGNING & STRIPING NOTES

- 1 PAINT 4" WIDE STRIPE FOR PARKING STALL, WHITE IF ON ASPHALT, TRAFFIC YELLOW IF ON CONCRETE.
- 2 PAINT STANDARD BLUE/YELLOW HANDICAP SYMBOL.
- 3 RE-INSTALL BUMPER BLOCKS PER CCAUSD NO. 238.
- 4 PAINT 4" DIAGONAL STRIPES FOR HANDICAP DELINEATION, 30" ON CENTER AT 45°, WHITE IF ON ASPHALT, TRAFFIC YELLOW IF ON CONCRETE.
- 5 INSTALL NEW SIGN - "HANDICAP ACCESSIBILITY" SIGN (12" X 18")
- 6 INSTALL NEW SIGN - "HANDICAP ACCESSIBILITY" SIGN (12" X 18") WITH "VAN ACCESSIBLE" SIGN (12" X 6")



CRAIG MARKETPLACE LLC
APN 138-03-715-007
PER
BOOK 117 OF PLATS, PAGE 95

CRAIG MARKETPLACE LLC
APN 138-03-715-007
PER
BOOK 117 OF PLATS, PAGE 95

REV.	DESCRIPTION	APPROVED BY	DATE

REVISIONS

DOGIE DISTRICT - W. CRAIG ROAD IMPROVEMENT PLANS

TRAFFIC, SIGNING & STRIPING PLAN

7083 WEST CRAIG ROAD
LAS VEGAS, NEVADA 89129

ACG DESIGN
4310 CAMERON ST., SUITE 12-A
LAS VEGAS, NEVADA 89103
OFFICE: 702.448.8737
WEBSITE: WWW.ACG-DESIGN.COM

ENGINEER'S SEAL

6/13/2017

DATE: 04/27/17
PROJ. NO: 160236
DRAWN BY: ARB
CHECKED BY: RAS
SCALE: AS NOTED
JURISDICTION: CLV

DRAWING NUMBER:
C9
SHEET 9 OF 9

AGENCY NUMBER:
CIVIL # L-70498
CLV # PRC-69431