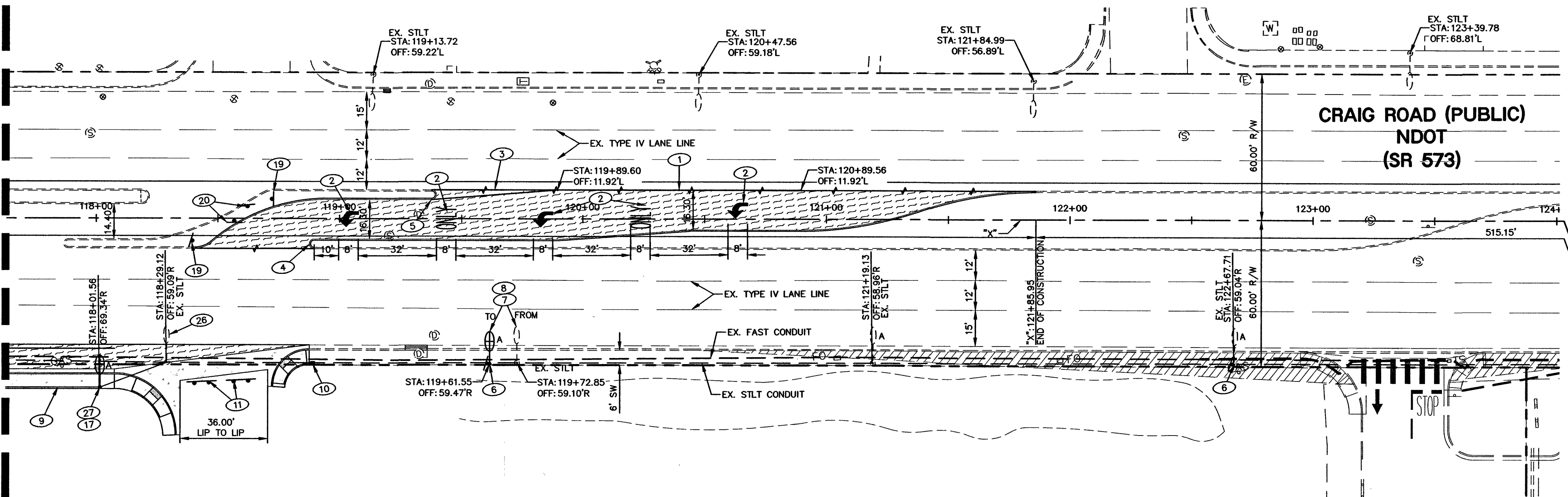


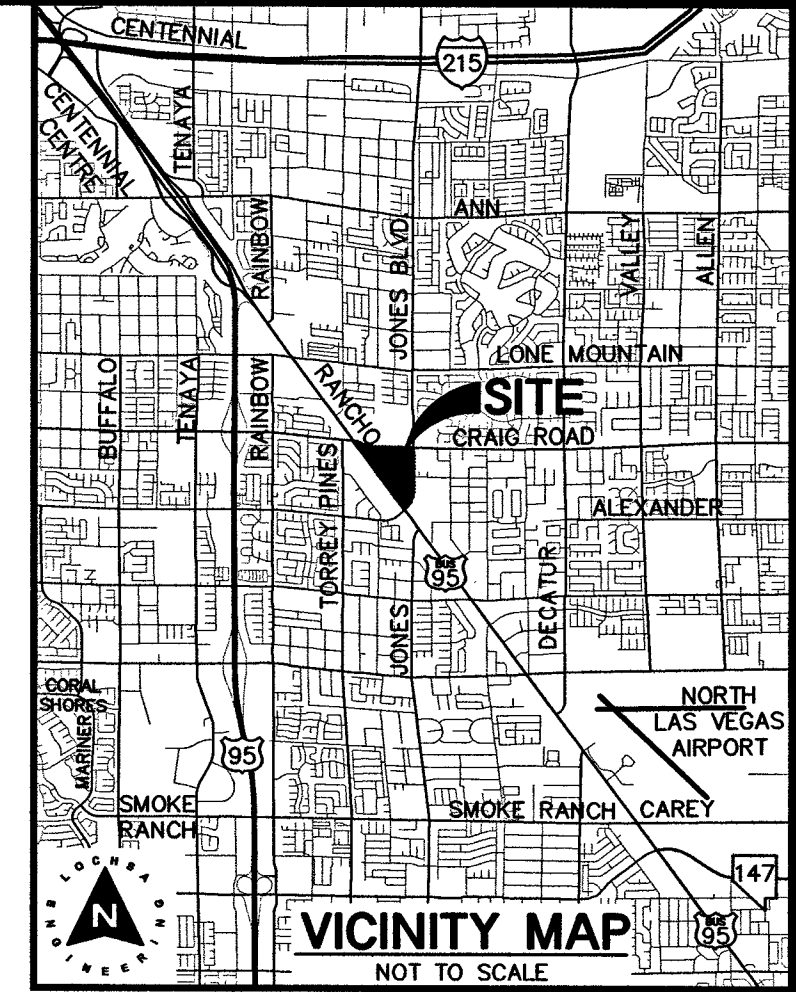
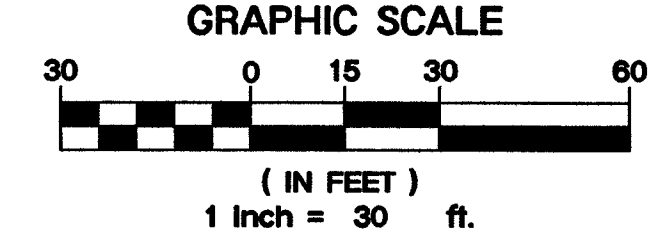
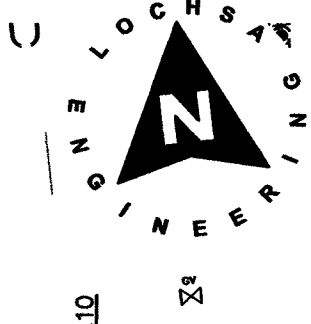
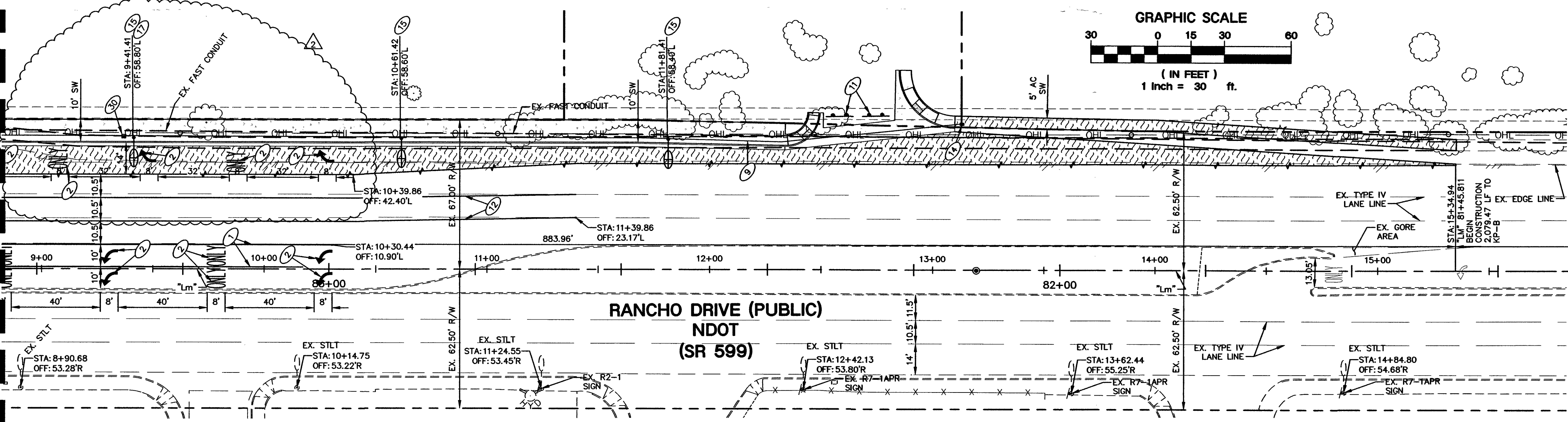
MATCHLINE - SEE SHEET C4.01

MATCHLINE - SEE SHEET C4.01



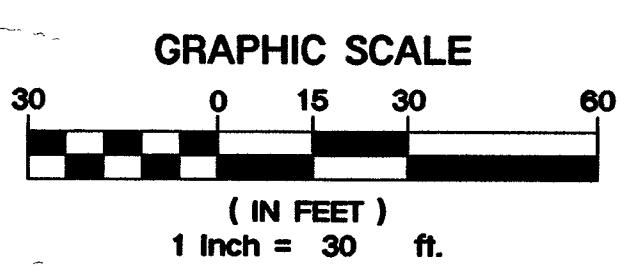
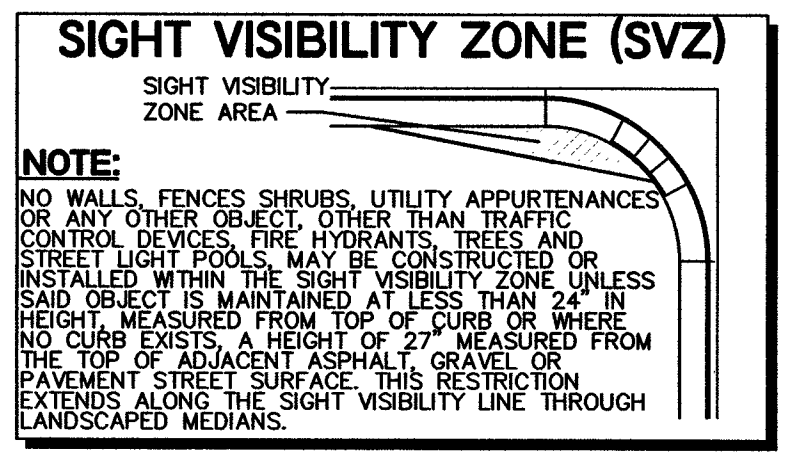
AS BUILT
DRAWINGS

Mey Construction Matthew



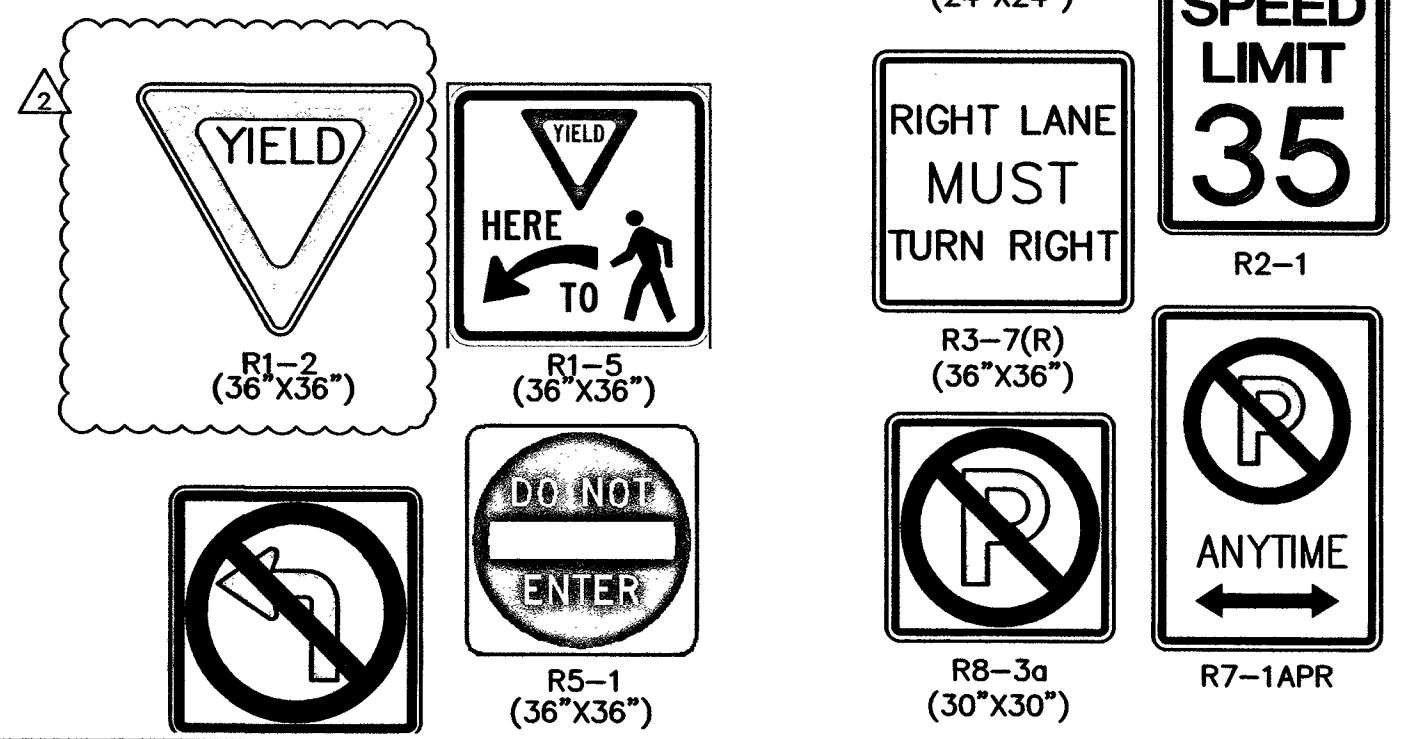
- TRAFFIC NOTES:**
1. INSTALL LEFT TURN LANE LINE PER CCAUSD #246.
 2. INSTALL WHITE TYPE II PAVEMENT MARKINGS.
 3. INSTALL WHITE TYPE II FILM GORE AREA PER CCAUSD #245.
 4. INSTALL YELLOW MEDIAN NOSE MARKINGS PER CCAUSD #248.
 5. INSTALL WHITE PAINTED MEDIAN NOSE MARKINGS PER CCAUSD #248.
 6. INSTALL R8-3 SIGN (30"x30").
 7. RELOCATE EX. STREETLIGHT STANDARD AND INSTALL STREETLIGHT FOUNDATION PER CCAUSD 320 AND 321. INTERCEPT EX. CONDUIT AND REPUILL CONDUCTORS. REPLACE EX. HPS LUMINAIRE WITH GE EVOLVE ERS20 18 E 1-40 A GRAY FLR OR APPROVED EQUIVALENT.
 8. CHOP EX. FOUNDATION 24" BELOW GRADE. INSTALL NO 3-1/2 PULLBOX PER CCAUSD 326 AND REPUILL CONDUCTORS.
 9. INSTALL 1-1/4" PVC CONDUIT W/ (2) #4 AND (1) #8 CONDUCTOR.
 10. INTERCEPT EX. CONDUIT AND INSTALL NO 3-1/2 PULLBOX PER CCAUSD #326 AND REPUILL CONDUCTORS.
 11. INSTALL TYPE III BARRICADES PER CCAUSD #601.
 12. INSTALL TYPE IV CURB LINE PER CCAUSD #244.7.
 13. INSTALL 4" WIDE WHITE PAINTED EDGE LINE.
 14. INSTALL #3-1/2 PULLBOX PER CCAUSD #326.
 15. INSTALL GE EVOLVE ERS20 18 E 1-40 A GRAY FLR OR APPROVED EQUIVALENT ON STREETLIGHT STANDARD PER CCAUSD 314 AND STREETLIGHT FOUNDATION PER CCAUSD 320 AND 321.
 16. INSTALL 6" WHITE PAINTED LANE LINE.
 17. INSTALL R3-7R SIGN (36"x36").
 18. INSTALL R1-5 SIGN (36"x36").
 19. INSTALL R5-1 SIGN (36"x36").
 20. INSTALL R3-2 SIGN (24"x24").
 21. INSTALL TYPE I FILM CROSSWALK MARKINGS PER CCAUSD #254.
 22. INSTALL WHITE TYPE I 24" WIDE STOP BAR.
 23. INSTALL 4" PVC FAST CONDUIT W/ 6-PAIR PE-3A 22 AWG INTERCONNECT CABLE PER CCAUSD #236.03.12.
 24. INTERCEPT EX. CONDUIT AND REPUILL CONDUCTORS.
 25. REMOVE EX. STREETLIGHT AND RETURN TO CLV.
 26. INSTALL 250 W LED LUMINAIRE W/ 18" MAST ARM ON STREETLIGHT STANDARD PER CCAUSD 316. INSTALL STREETLIGHT FOUNDATION PER CCAUSD 320 AND 321.
 27. INSTALL 250 W LED LUMINAIRE W/ 10" MAST ARM ON STREETLIGHT STANDARD PER CCAUSD 316. INSTALL STREETLIGHT FOUNDATION PER CCAUSD 320 AND 321.
 28. INSTALL R1-2 SIGN (36"x36").
 29. INSTALL 200 AMP SERVICE PEDESTAL PER CCAUSD 730, 330, AND 332.S2.
 30. INSTALL 200 AMP SERVICE PEDESTAL PER CCAUSD 730, 330, AND 332.S2.

HORIZONTAL CONTROL NOTE:
ALL DIMENSIONS SHOWN ARE TO BACK OF CURB UNLESS NOTED OTHERWISE ON PLANS.



FIRE ACCESS NOTES/ LEGEND:

1. PAINTED WHITE BLOCK LETTERS NO LESS THAN 4" IN HEIGHT STATING "NO PARKING FIRE LANE" PER FIRE SAFETY DIVISION'S UNIFORM GUIDELINES.
2. INSTALL FIRE LANE ENTRANCE WARNING SIGN PER DETAIL BELOW.



NOTE:
LOCHSA ENGINEERING ASSUMES NO RESPONSIBILITY FOR EXISTING UTILITY LOCATIONS AND ELEVATIONS. THE UTILITIES SHOWN ON THIS PLAN ARE FROM THE BEST AVAILABLE INFORMATION. IT IS THE CONTRACTOR'S RESPONSIBILITY TO FIELD VERIFY THE LOCATION AND ELEVATION OF ALL UTILITIES, INCLUDING BUT NOT LIMITED TO, THE WATER, FIRE, SANITARY SEWER, STORM SEWER, TELEPHONE, POWER, GAS, AND IRRIGATION LINES PRIOR TO THE COMMENCEMENT OF CONSTRUCTION. IF CONFLICT EXISTS IN THE FIELD, THE CONTRACTOR IS TO NOTIFY THE PROJECT ARCHITECT, OWNER'S REPRESENTATIVE AND THE PROJECT ENGINEER IMMEDIATELY.

A.P.N.:
138-02-713-002

BASIS OF BEARINGS:
THE BASIS OF BEARINGS FOR THIS SURVEY IS THE SOUTHERLY LINE OF THE NORTHEAST QUARTER (NE 1/4) OF SECTION 2, TOWNSHIP 20 SOUTH, RANGE 60 EAST M.D.M. AS SHOWN ON THAT MAP ON FILE IN FILE 192, PAGE 31 OF SURVEYS IN THE CLARK COUNTY RECORDERS OFFICE. SAID LINE BEARS: NORTH 83°42'46" WEST.

BENCHMARK:
BENCHMARK NO. 5100004 CITY OF LAS VEGAS BENCHMARK. RIVET AND PLATE IN TOP OF CURB AT THE NORTHWEST CORNER OF CRAIG ROAD AND JONES BOULEVARD. ELEVATION=2261.86 FEET / 689.423 METERS (NAVD 88 DATUM)

FAST Underground
Call before you Dig
Avoid cutting underground utility lines. It's costly.

FAST Underground
Call before you Dig
Avoid hitting overhead power lines. It's costly.

LEGEND	CL OR SURVEY LINE	EASEMENT LINE	DESCRIPTION:	CONTOUR LINES	EDGE OF PAVEMENT	"A" TYPE CURBS	"L" TYPE CURBS	WALLS	FENCES	AC PAVEMENT	CONCRETE	SPOT ELEVATIONS	SIGNS	MANHOLE W/ DESCRIPTION	MANHOLE DESCRIPTIONS	FIRE HYDRANTS	GATE VALVES	REDUCERS	CLEAN OUTS	UTILITY BOX OR VAULT	BACKWATER VALVES	100' HPS STREETLIGHTS	150' HPS STREETLIGHTS	200' HPS STREETLIGHTS	250' HPS STREETLIGHTS
	PROPERTY LINE	SAWCUT LINE	EXISTING:	(---2210---		=====	=====	=====	=====	=====	=====	(12.33) BC	①	② = SANITARY SEWER ③ = STORM DRAIN ④ = ELECTRICAL ⑤ = TELEPHONE	⑥	⑦	⑧	⑨	⑩	⑪	(BWV)	(BWV)	(BWV)	(BWV)	(BWV)
	ROW LINE	SCARP LINE	PROPOSED:	(---2122---		=====	=====	=====	=====	=====	=====	(12.34) BC	②	⑥	⑦	⑧	⑨	⑩	⑪	⑫	(BWV)	(BWV)	(BWV)	(BWV)	(BWV)

Lochsa
ENGINEERING

**CRAIG & RANCHO
PHASE 1 & 2 OFF-SITES
IMPROVEMENT PLANS**

**HORIZONTAL & TRAFFIC CONTROL PLANS
(SHEET 2 OF 2)**

SHEET No.: 161063
DATE: 7/12/16
SCALE: 1" = 30'
DRAWN BY: JLI
DESIGNED BY: JLI
CHECKED BY: TTE

PROJECT No.: 161063
DATE: 7/12/16
SCALE: 1" = 30'
DRAWN BY: JLI
DESIGNED BY: JLI
CHECKED BY: TTE

SEAL
T.E.D. EGERTON
EXP. 12-31-16
CIVIL
No. 11286

SHEET No. C4.02
CLV No. 65704
10706756