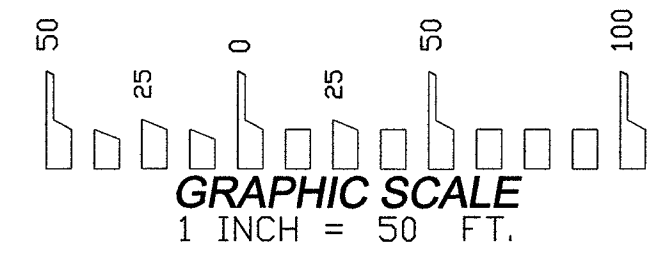
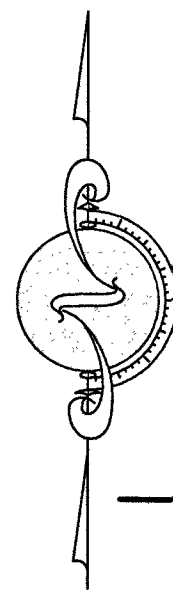


MONUMENT TIE MAP GRAND CANYON / DEER SPRINGS

A COMMON INTEREST COMMUNITY
AS SHOWN BY MAP THEROF ON FILE IN BOOK 148, PAGE 12 OF PLATS IN THE OFFICE OF THE RECORDER'S OFFICE OF CLARK COUNTY, NEVADA, LYING WITHIN THE SOUTH HALF (S 1/2) OF THE NORTHWEST QUARTER (NW 1/4) OF SECTION 19, TOWNSHIP 19 SOUTH, RANGE 60 EAST, M.D.M., CITY OF LAS VEGAS, CLARK COUNTY, NEVADA.



MATCH LINE SEE SHEET 2

CURVE TABLE				
CURVE	DELTA	RADIUS	LENGTH	TANGENT
C1	27°02'03"	180.00	84.93	43.27
C2	26°27'16"	180.00	83.11	42.31



LEGEND

- SUBDIVISION BOUNDARY LINE
- LOT LINE
- STREET CENTERLINE
- PRIVATE STREET LINE
- ADJOINING PROPERTY LINE
- EXISTING RIGHT-OF-WAY

- 1 LOT NUMBER

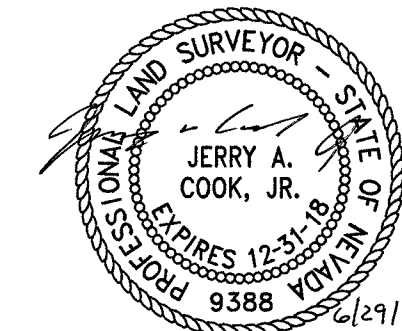
- SET TYPE 5/8" REBAR & 1 1/2" ALUMINUM CAP STAMPED "PLS 9388"
- SET TYPE IV REFERENCE MONUMENT STAMPED "PLS 9388"
- SET TYPE III REFERENCE MONUMENT STAMPED "PLS 9388"
- FOUND 2" BRASS CAP IN CONCRETE STAMPED "PLS 11449"
- FOUND 1 1/2" ALUMINUM CAP STAMPED "PLS 11449"
- FOUND TYPE IV REFERENCE MONUMENT STAMPED "PLS 11449"

SURVEYOR'S CERTIFICATE

I, JERRY A. COOK, JR., A PROFESSIONAL LAND SURVEYOR, LICENSED IN THE STATE OF NEVADA, AS AGENT FOR THOMASON CONSULTING ENGINEERS, DO HEREBY CERTIFY THAT:

1. THIS PLAT REPRESENTS THE RESULT OF A SURVEY CONDUCTED UNDER MY DIRECT SUPERVISION AT THE INSTANCE OF RICHMOND AMERICAN HOMES OF NEVADA, INC., A COLORADO CORPORATION.
2. THE LANDS SURVEYED LIE WITHIN THE SOUTH HALF (S 1/2) OF THE NORTHWEST QUARTER (NW 1/4) OF SECTION 19, TOWNSHIP 19 SOUTH, RANGE 60 EAST, M.D.M., CITY OF LAS VEGAS, CLARK COUNTY, NEVADA, AND THAT THE SURVEY WAS COMPLETED ON JUNE 29, 2017.
3. THIS PLAT COMPLIES WITH THE APPLICABLE STATE STATUTES AND LOCAL ORDINANCES IN EFFECT ON THE DATE THAT THE SURVEY WAS COMPLETED AND WAS PERFORMED IN ACCORDANCE WITH THE NEVADA ADMINISTRATIVE CODE STANDARDS OF PRACTICE FOR PROFESSIONAL LAND SURVEYORS.
4. THE MONUMENTS DEPICTED ON THIS PLAT ARE OF THE CHARACTER SHOWN, OCCUPY THE POSITIONS INDICATED AND ARE OF SUFFICIENT NUMBER AND DURABILITY.

JERRY A. COOK, JR., PLS
PROFESSIONAL LAND SURVEYOR
NEVADA LICENSE NO. 9388



MAP REFERENCES

1. BOOK 148, PAGE 12 OF PLATS
2. FMP - 54785

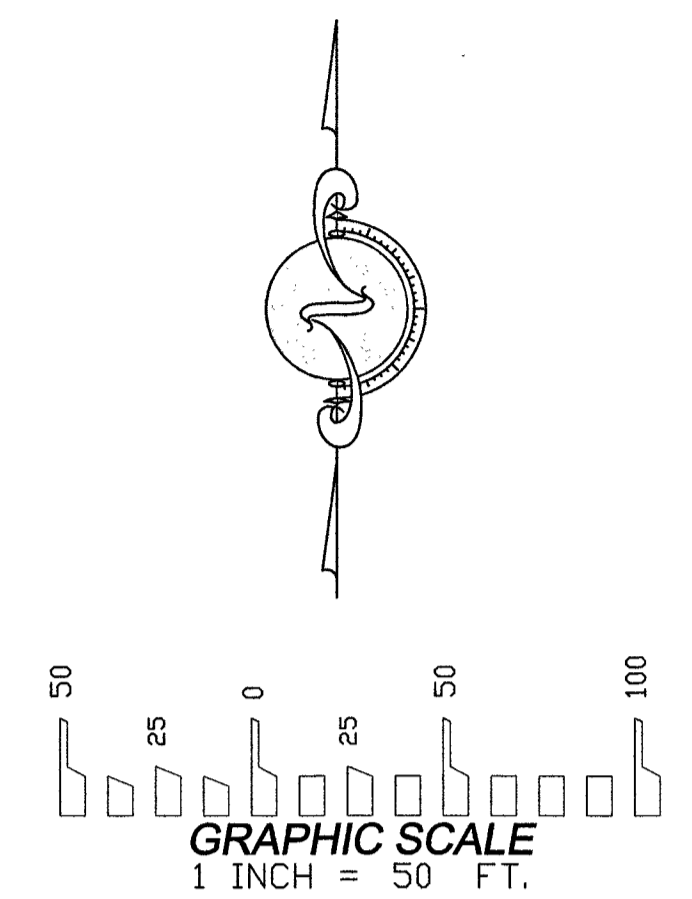
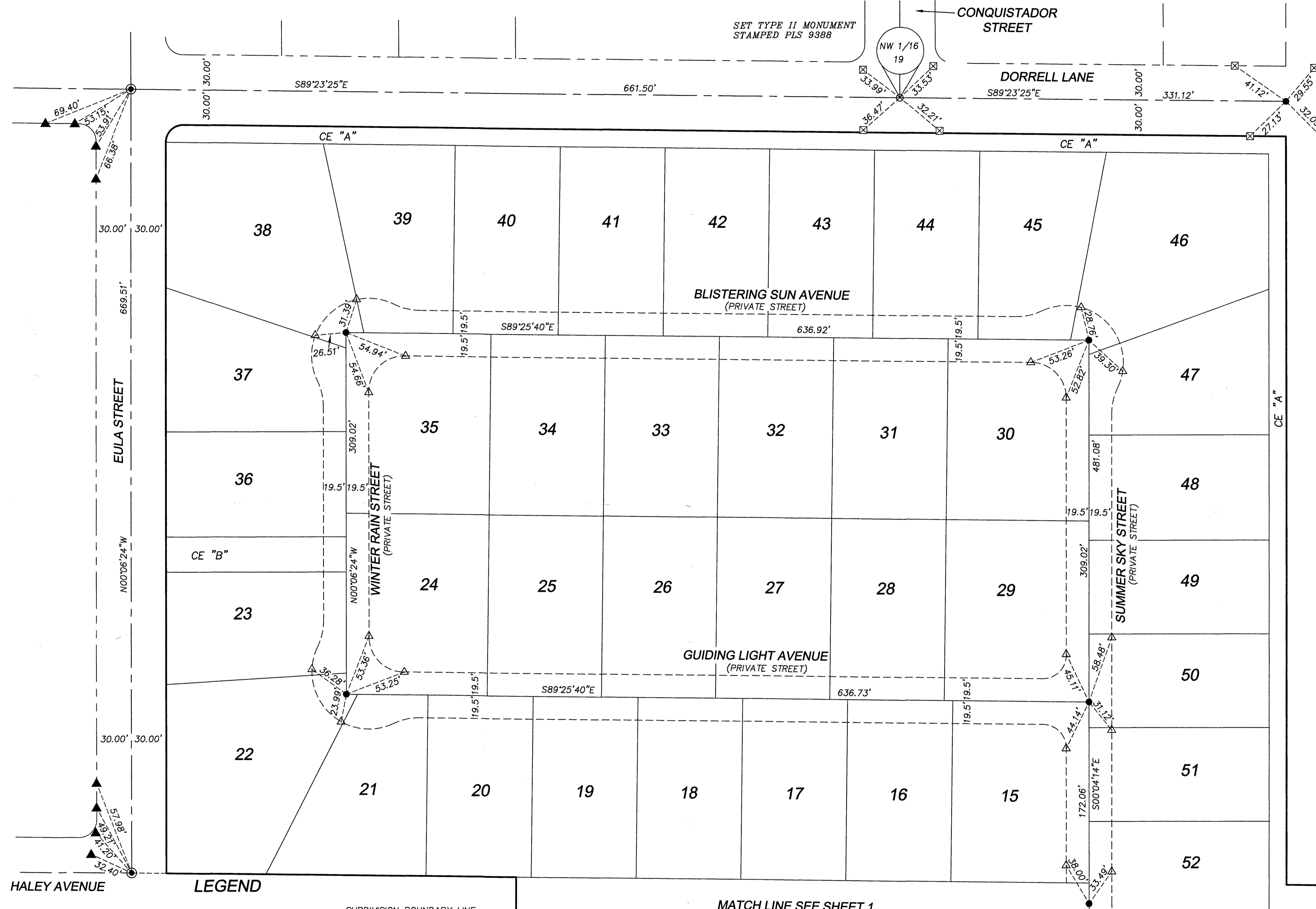
COUNTY RECORDER'S NOTE

ANY SUBSEQUENT CHANGES TO THIS MAP SHOULD BE EXAMINED AND MAY BE DETERMINED BY REFERENCE TO THE COUNTY RECORDER'S CUMULATIVE MAP INDEX. NRS 278.5695

MONUMENT TIE MAP GRAND CANYON / DEER SPRINGS A COMMON INTEREST COMMUNITY		No. _____
AS SHOWN BY MAP THEROF ON FILE IN FILE 148, PAGE 12 OF PLATS IN THE OFFICE OF THE RECORDER'S OFFICE OF CLARK COUNTY, NEVADA, LYING WITHIN THE SOUTH HALF (S 1/2) OF THE NORTHWEST QUARTER (NW 1/4) OF SECTION 19, TOWNSHIP 19 SOUTH, RANGE 60 EAST, M.D.M., CITY OF LAS VEGAS, CLARK COUNTY, NEVADA.		FILED AT THE REQUEST OF: TCE
<input type="checkbox"/> THOMASON <input type="checkbox"/> CONSULTING <input type="checkbox"/> ENGINEERS 7080 LA CIENEGA STREET, SUITE 200 LAS VEGAS, NEVADA 89119 702-932-6125 FAX: 702-932-6129		DATE _____ TIME _____ FILE _____ PAGE _____ OF SURVEYS OFFICIAL RECORDS BOOK
Date: 8/29/2017 Drawn By: J.COOK Checked By: J.COOK Job Number: 001-13-012 Sheet No. 1 OF 2		No. _____ CLARK COUNTY, NEVADA RECORDS DEBBIE CONWAY, RECORDER FEE \$ _____ DEPUTY _____

MONUMENT TIE MAP GRAND CANYON / DEER SPRINGS

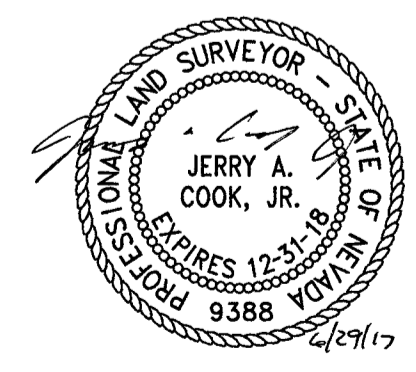
A COMMON INTEREST COMMUNITY
AS SHOWN BY MAP THEROF ON FILE IN BOOK 148, PAGE 12 OF PLATS IN THE OFFICE OF THE RECORDER'S OFFICE OF CLARK COUNTY, NEVADA, LYING WITHIN THE SOUTH HALF (S 1/2) OF THE NORTHWEST QUARTER (NW 1/4) OF SECTION 19, TOWNSHIP 19 SOUTH, RANGE 60 EAST, M.D.M., CITY OF LAS VEGAS, CLARK COUNTY, NEVADA.



LEGEND	
	SUBDIVISION BOUNDARY LINE
	LOT LINE
	STREET CENTERLINE
	PRIVATE STREET LINE
	ADJOINING PROPERTY LINE
	EXISTING RIGHT-OF-WAY
1	LOT NUMBER
	SET TYPE 5/8" REBAR & 1 1/2" ALUMINUM CAP STAMPED "PLS 9388"
	SET TYPE II MONUMENT STAMPED "PLS 9388"
	SET TYPE IV REFERENCE MONUMENT STAMPED "PLS 9388"
	SET TYPE III REFERENCE MONUMENT STAMPED "PLS 9388"
	FOUND 2" ALUMINUM CAP STAMPED "J. MILLER PLS 21266"
	FOUND TYPE IV REFERENCE MONUMENT STAMPED "PLS 21266"

MATCH LINE SEE SHEET 1

BASIS OF BEARING
NORTH 00°03'58" WEST BEING THE CENTERLINE OF GRAND CANYON DRIVE AND BEING THE EAST LINE OF THE SOUTHEAST QUARTER (SE 1/4) OF THE NORTHWEST QUARTER (NW 1/4) OF SECTION 19, TOWNSHIP 19 SOUTH, RANGE 60 EAST, M.D.M., CLARK COUNTY, NEVADA AS SHOWN IN FILE 123, PAGE 32 OF SURVEYS IN THE RECORDER'S OFFICE OF CLARK COUNTY, NEVADA.



T	THOMASON	Date:	6/29/2017
C	CONSULTING	Drawn By:	J. COOK
E	ENGINEERS	Checked By:	J. COOK
7080 LA CIENEGA STREET, SUITE 200 LAS VEGAS, NEVADA 89119 702-932-6125		Job Number:	001-13-012
FAX: 702-932-6129		Sheet No.:	2 OF 2