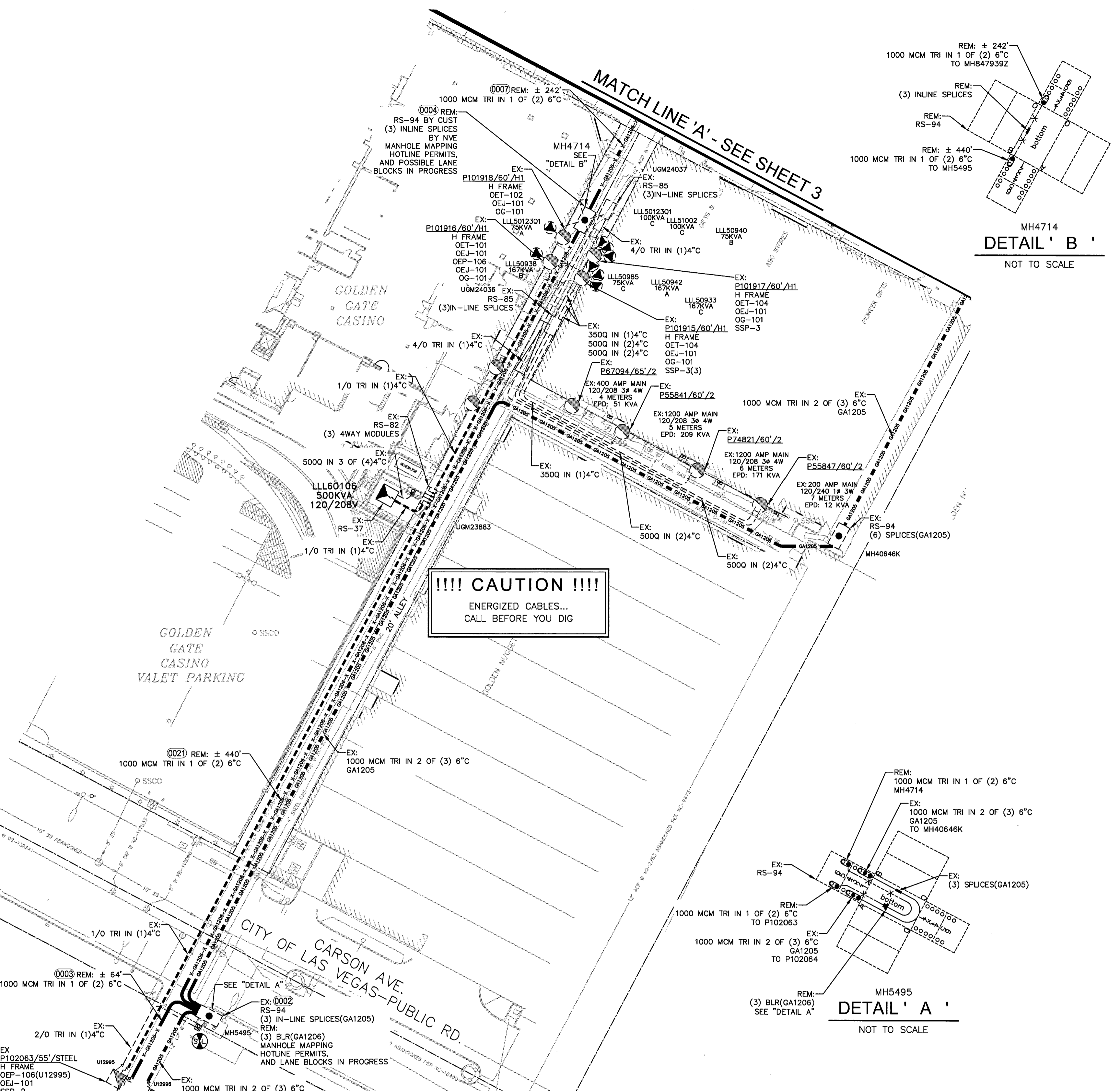


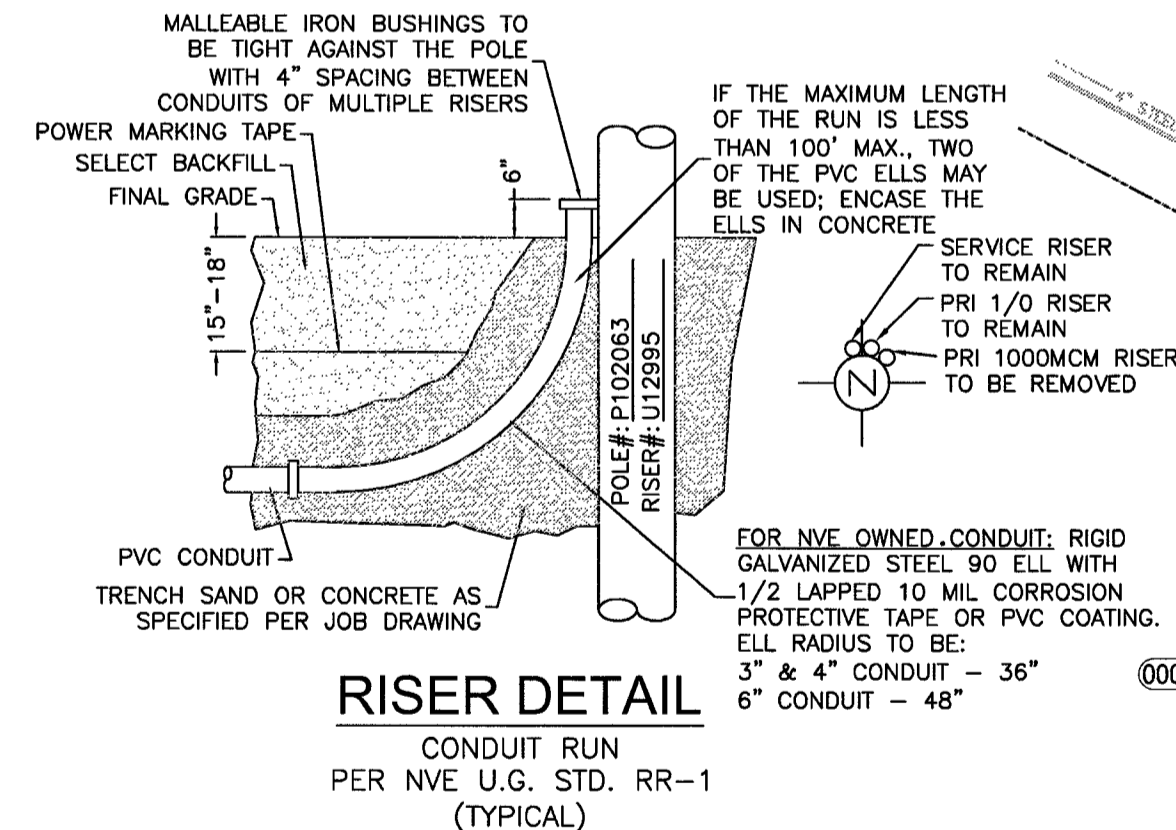
T,R,S: 2061-34
APN: 13934111033



MH4714
DETAIL ' B '
NOT TO SCALE

!!!! CAUTION !!!!
ENERGIZED CABLES...
CALL BEFORE YOU DIG

MH5495
DETAIL ' A '
NOT TO SCALE



RISER DETAIL
CONDUIT RUN
PER NVE U.G. STD. RR-1
(TYPICAL)

NV ENERGY SCHEDULING NOTE: DAY (LANE BLOCKS)
THIS PROJECT WAS ESTIMATED WITH THE ASSUMPTION THAT ALL THE WORK BEING PERFORMED ON THIS PROJECT BY NV ENERGY CREWS CAN BE DONE DURING THE DAYTIME AND WILL REQUIRE TRAFFIC CONTROL.
GOVERNMENT APPROVAL OF THESE DRAWINGS DOES NOT INDICATE APPROVAL OF TRAFFIC CONTROL. PLEASE REFER TO THE BARRICADE PLAN FOR APPROVED TRAFFIC CONTROL REQUIREMENTS.

**NVEnergy REQUIRES
24 HOUR
ACCESS TO EQUIPMENT**

CONSTRUCTION/INSPECTION REQUIREMENTS
WORK MUST CONFORM TO NVE ELECTRIC SERVICE STANDARDS, AVAILABLE AT: www.nvenergy.com/business/newconstruction/newconstruction/nve-neststandards.cfm
NVE INSPECTOR MUST BE PRESENT TO INSPECT TRENCHING (SCHEDULE AT LEAST 72 HOURS IN ADVANCE) AT EACH OF THE FOLLOWING STAGES:
1. BOTTOM SAND AND CONDUIT INSTALLED
2. TOP SAND INSTALLED
3. BACKFILL INSTALLED
CONDUIT MUST BE MANHOLED PRIOR TO RELEASE (COORDINATE WITH INSPECTOR).
NVE STAND BY CREW IS REQUIRED WHEN WORKING AT AN ENERGIZED VAULT OR TRANSFORMER. CALL STAND BY NUMBER (SEE TITLE BLOCK) TO SCHEDULE.
NVE ELECTRICAL INSTALLATION WILL NOT BE SCHEDULED UNTIL AFTER THE NVE INSPECTOR HAS COMPLETED THE OFFICIAL RELEASE.
METERS WILL NOT BE SET UNTIL ALL OF THE FOLLOWING ARE COMPLETE:
• (INSTRUMENT-RATED ONLY) METERING EQUIPMENT HAS BEEN SUBMITTED TO NVE METERING ENGINEER AND APPROVED. (submit@nve.com)
• APPLICATION FOR METER SET HAS BEEN SUBMITTED TO NVE'S NEW DEVELOPMENT CENTER. FORM AVAILABLE AT: www.nvenergy.com/business/newconstruction/newconstruction/meter_set.pdf
• THE LOCAL BUILDING AUTHORITY HAS INSPECTED AND APPROVED THE METERING EQUIPMENT.
• METERING EQUIPMENT IS ACCESSIBLE AND CLEARLY IDENTIFIED WITH PERMANENT MARKINGS, ADDRESSES, SUITE NUMBERS, AND STREET SIGNS ARE POSTED IN PERMANENT LOCATIONS (SEE RP-3).
TRACK PROJECT STATUS ONLINE WITH NVE'S DEVELOPER DASHBOARD: www.nvenergy.com/business/newconstruction/newconstruction/developerdashboard.cfm

APPROVED FOR CONSTRUCTION
THIS APPROVAL IS FOR WORK IN CLV R/W & EASEMENT ONLY. OBTAINING PERMISSIONS OR EASEMENTS FOR WORK SHOWN ON PRIVATE PROPERTY IS THE RESPONSIBILITY OF THE UTILITY.
APPROVAL _____ DATE _____

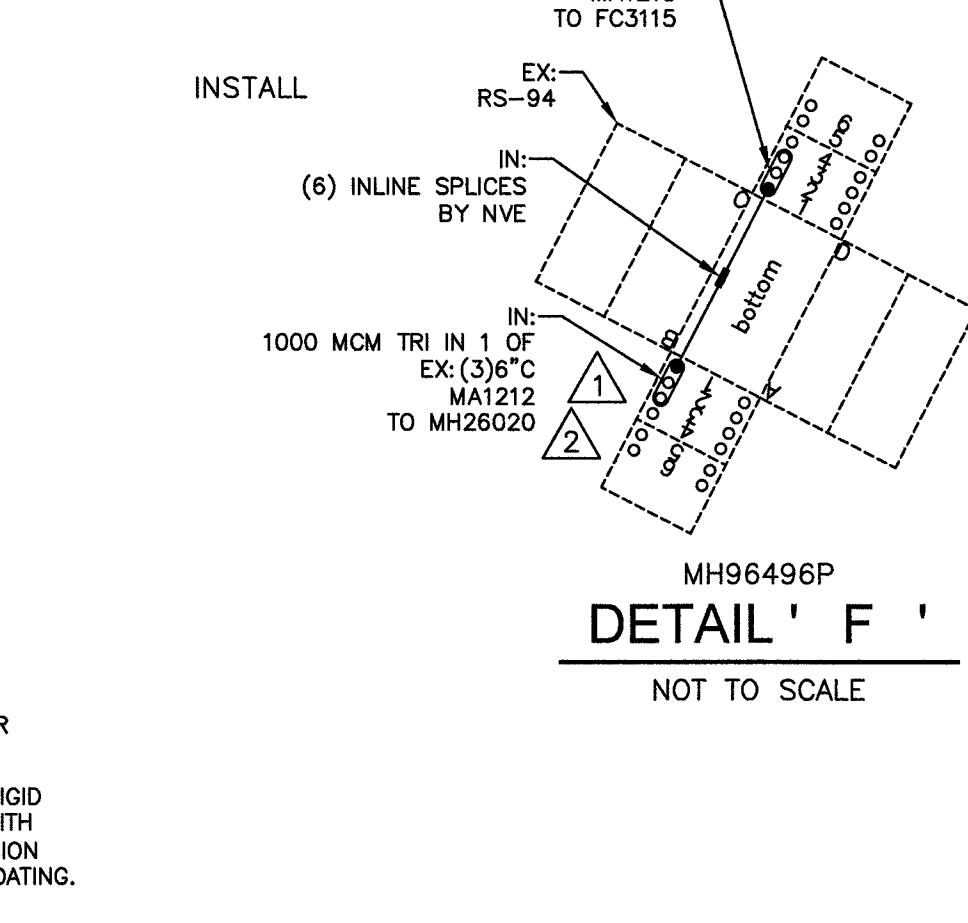
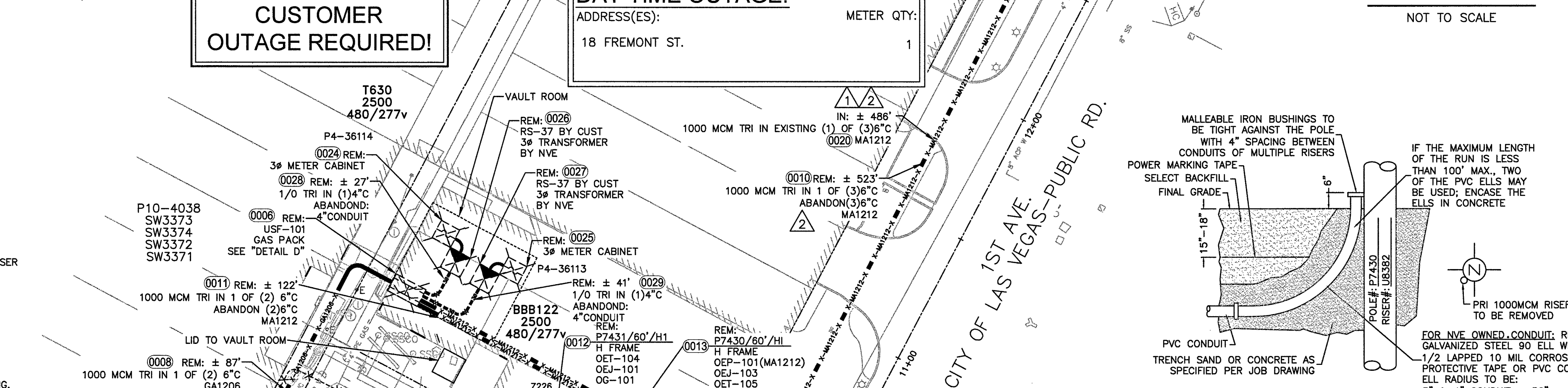
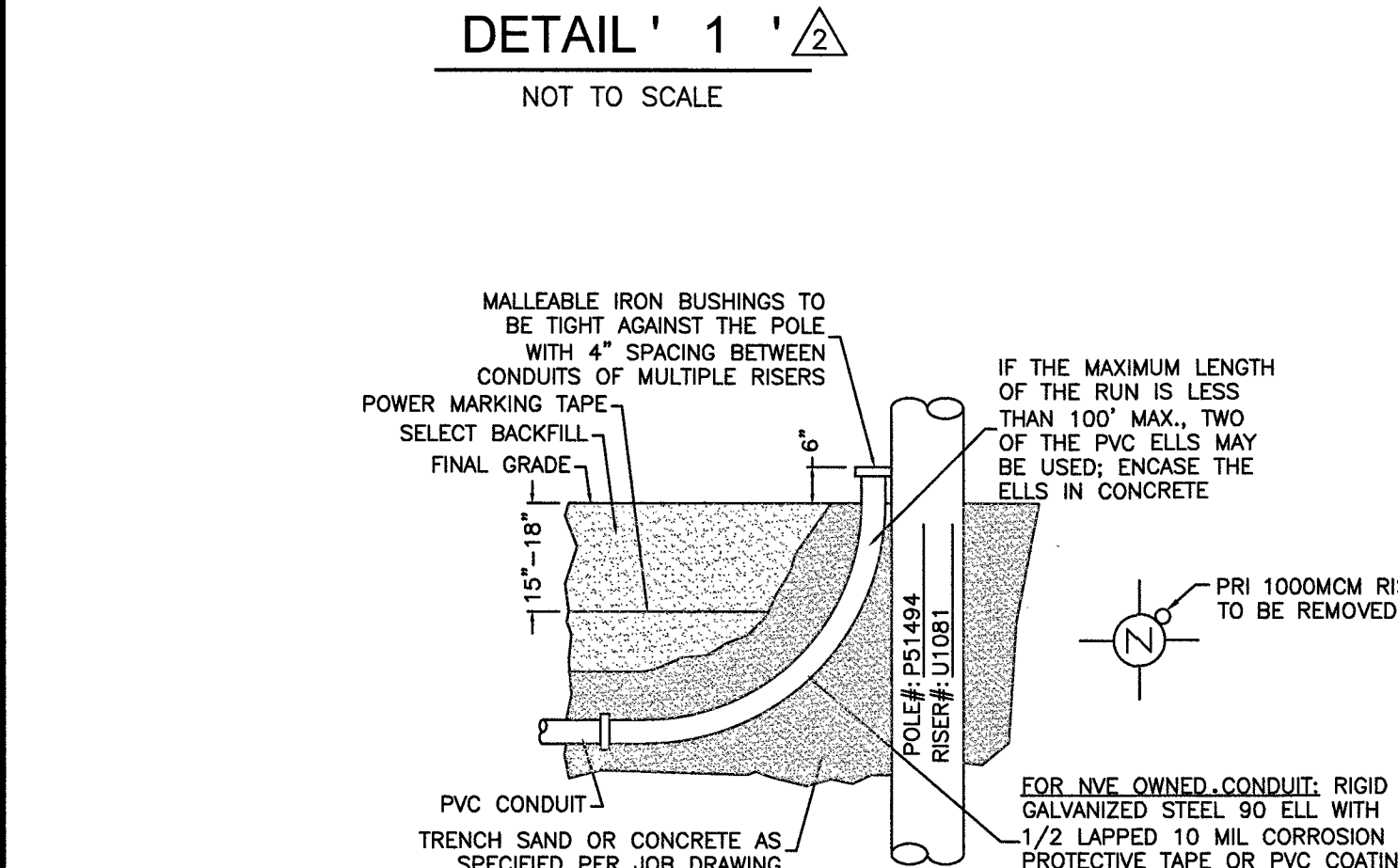
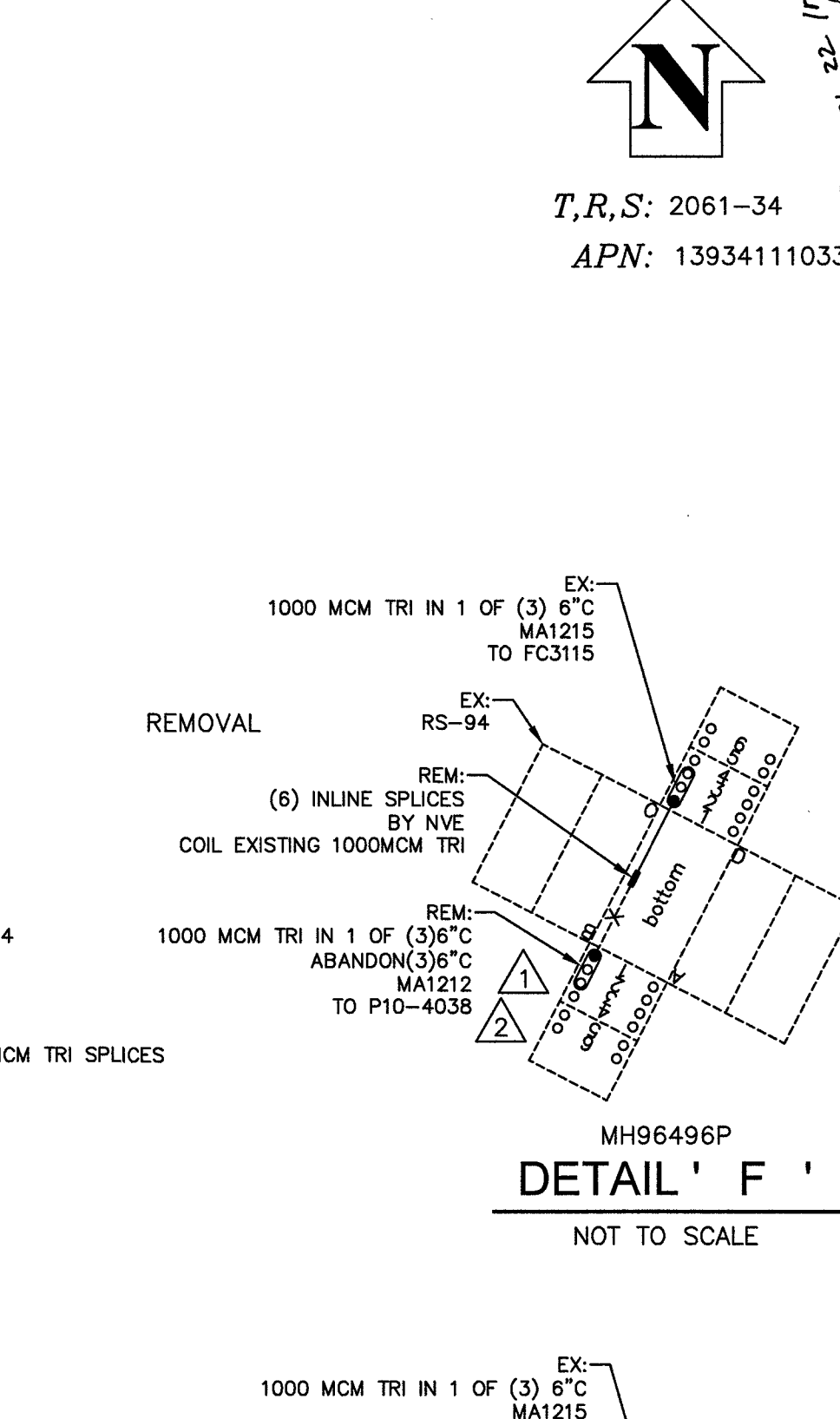
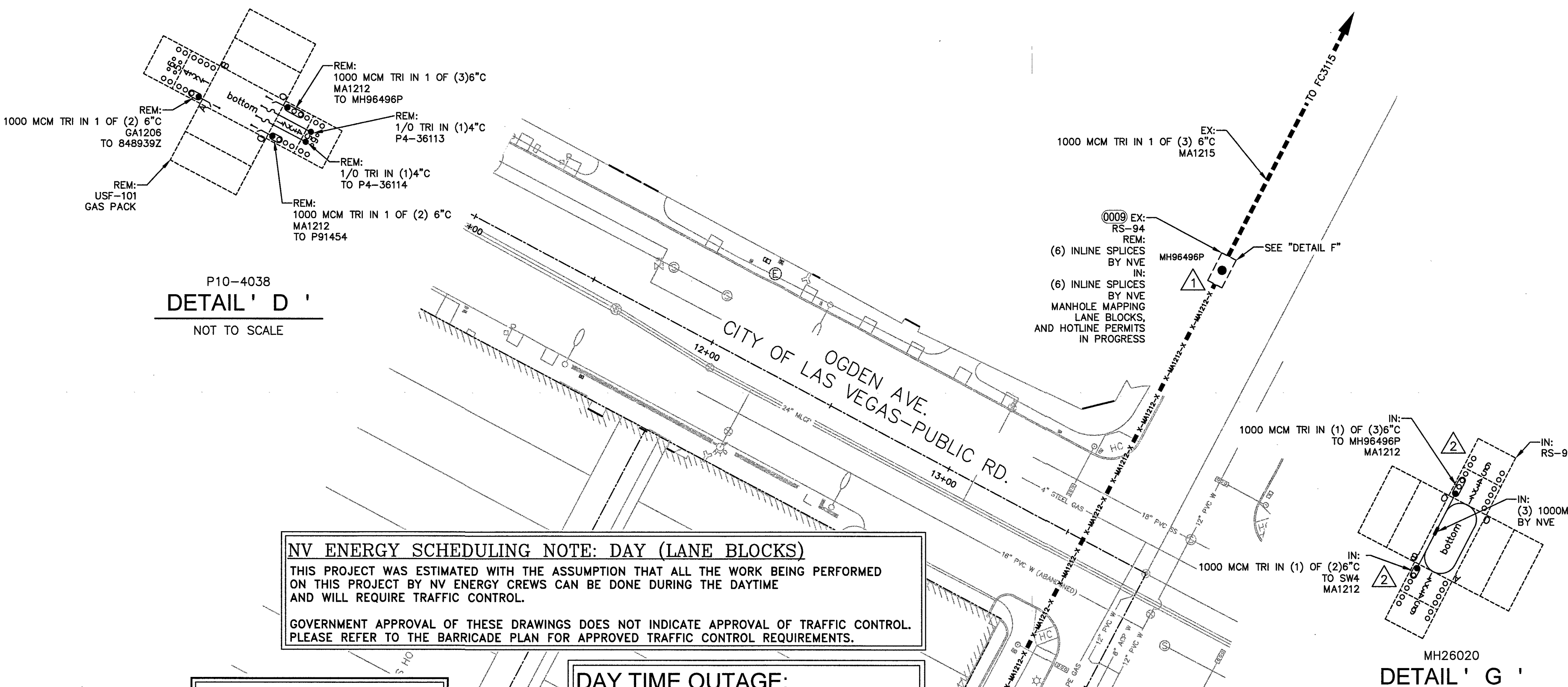
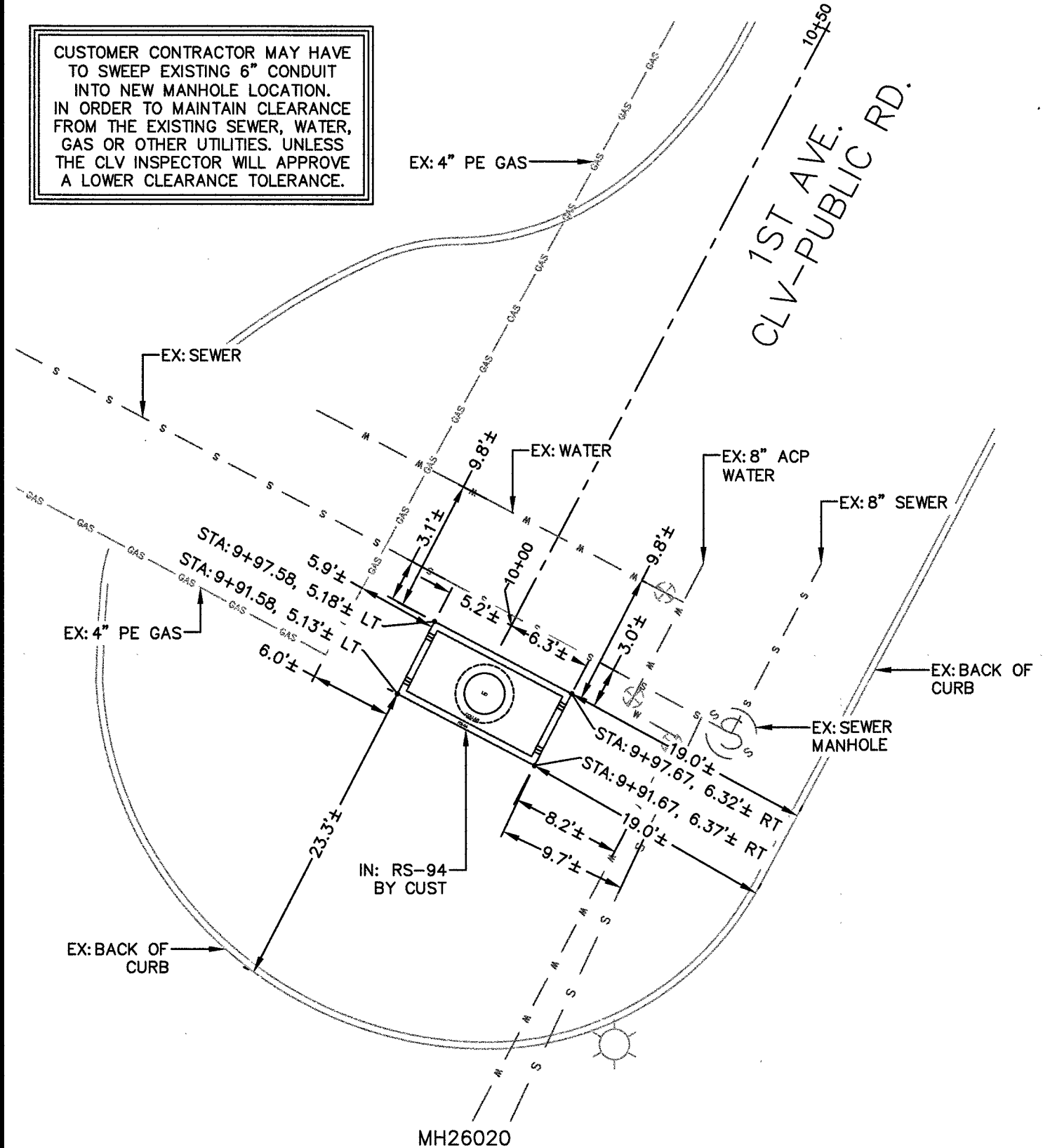
CITY OF LAS VEGAS
PERMIT REQUIRED*
CONTACT CLV LAND DEVELOPMENT (229-6371)
CLV CONSTRUCTION SERVICES MUST BE NOTIFIED 24 HOURS PRIOR TO COMMENCING CONSTRUCTION (229-6337)
HANSEN _____
DATE _____
*NVE INSPECTOR MUST BE NOTIFIED BY FAX 48 HOURS PRIOR TO COMMENCING CONSTRUCTION & WILL VERIFY CITY PERMIT FOR WORK DONE IN STREETS OR SIDEWALK.
FAX PERMIT TO:
LAS VEGAS NORTH (RYAN CENTER): 402-4354
LAS VEGAS SOUTH (BELTWAY CENTER): 402-6864

NO.	DESCRIPTION	DATE	C.A.
REVISIONS			
NON-STANDARD			
COORDINATOR: BRAD REIPLINGER PHONE: 702-292-5144 DCA: N/A INSPECTOR: 402-3008 STAND BY: 402-4114, 402-4117, 402-4118 DESIGNER: DAVID KIRKSEY			
NVE INFO:			
18 FREMONT STREET - PHASE 1 - REMOVAL FREMONT STREET / MAIN STREET			
PROJ. ID: 3001616925			
SCALE: 1" = 30'			
DATE: 01/12/2017			
SHEET #: 2 OF 3			

CUSTOMER CONTRACTOR MAY HAVE TO SWEEP EXISTING 6" CONDUIT INTO NEW MANHOLE LOCATION. IN ORDER TO MAINTAIN CLEARANCE FROM THE EXISTING SEWER, WATER, GAS OR OTHER UTILITIES, UNLESS THE CLV INSPECTOR WILL APPROVE A LOWER CLEARANCE TOLERANCE.

DATE	03/28/2017
DESCRIPTION	IN THE AND NEW MH BETWEEN MH96496P AND MH26020 (PG 3) TO REFLECT CHANGED THE NUMBER OF RUNS BEING REMOVED AND REV. STATIONS (PG 3, 5, 6) AND REV. STATIONS (PG 3, 5, 6)
NO.	2
REVISIONS	

NON-STANDARD
NVEnergy™
 COORDINATOR: BRAD REIPLINGER
 PHONE: 702-292-5144
 DCA: N/A
 INSPECTOR: 402-3008
 STAND BY: 402-4114, 402-4117, 402-4118
 DESIGNER: DAVID KIRKSEY



NV ENERGY SCHEDULING NOTE: DAY (LANE BLOCKS)
 THIS PROJECT WAS ESTIMATED WITH THE ASSUMPTION THAT ALL THE WORK BEING PERFORMED ON THIS PROJECT BY NV ENERGY CREWS CAN BE DONE DURING THE DAYTIME AND WILL REQUIRE TRAFFIC CONTROL.
 GOVERNMENT APPROVAL OF THESE DRAWINGS DOES NOT INDICATE APPROVAL OF TRAFFIC CONTROL. PLEASE REFER TO THE BARRICADE PLAN FOR APPROVED TRAFFIC CONTROL REQUIREMENTS.

CUSTOMER OUTAGE REQUIRED!

DAY TIME OUTAGE:
 ADDRESS(ES): 18 FREMONT ST.
 METER QTY: 1

!!! CAUTION !!!
 ENERGIZED CABLES...
 CALL BEFORE YOU DIG

NVEnergy REQUIRES 24 HOUR ACCESS TO EQUIPMENT

CONSTRUCTION/INSPECTION REQUIREMENTS
 WORK MUST CONFORM TO NVE ELECTRIC SERVICE STANDARDS, AVAILABLE AT: www.nveenergy.com/business/newconstruction/newconstructionstandards.cfm
 NVE INSPECTOR MUST BE PRESENT TO INSPECT TRENCHING (SCHEDULE AT LEAST 72 HOURS IN ADVANCE) AT EACH OF THE FOLLOWING STAGES:
 1. BOTTOM SAND AND CONDUIT INSTALLED
 2. TOP SAND INSTALLED
 3. BACKFILL INSTALLED
 CONDUIT MUST BE MANDRELLED PRIOR TO RELEASE (COORDINATE WITH INSPECTOR).
 NVE STAND BY CREW IS REQUIRED WHEN WORKING AT AN ENERGIZED VAULT OR TRANSFORMER. CALL STAND BY NUMBER (SEE TITLE BLOCK) TO SCHEDULE.
 NVE ELECTRICAL INSTALLATION WILL NOT BE SCHEDULED UNTIL AFTER THE NVE INSPECTOR HAS COMPLETED THE OFFICIAL RELEASE.
 METERS(S) WILL NOT BE SET UNTIL ALL OF THE FOLLOWING ARE COMPLETE:
 • INSTRUMENT-RATED ONLY METERING EQUIPMENT HAS BEEN SUBMITTED TO NVE METERING ENGINEER AND APPROVED. (submit_meters@nveenergy.com)
 • APPLICATION FOR METER SET HAS BEEN SUBMITTED TO NVE'S NEW DEVELOPMENT CENTER. FORM AVAILABLE AT: www.nveenergy.com/structures/energy/new_development/meter_set.pdf
 • THE LOCAL BUILDING AUTHORITY HAS INSPECTED AND APPROVED THE METERING EQUIPMENT.
 • METERING EQUIPMENT IS ACCESSIBLE AND CLEARLY IDENTIFIED WITH PERMANENT MARKINGS, ADDRESS, SUITE NUMBERS, AND STREET SIGNS ARE POSTED IN PERMANENT LOCATIONS (SEE 99-9).
 TRACK PROJECT STATUS ONLINE WITH NVE'S DEVELOPER DASHBOARD: www.nveenergy.com/business/newconstruction/newconstruction/developerdashboard.cfm

CENTERLINE STATION TABLE			
STREET INTERSECTION	STA	HEADED	
1ST ST.	10+00	NORTH	
CLV-DE-SAC	N/A	N/A	
1ST ST	12+97.77	NORTH	
OGDEN AVE.	13+83.21	EAST	

STATION TABLE							
MAXIMUM CORNER	CENTER LINE STATION	SIDE	OFFSET CL TO BOC TO ROW	OFFSET CL TO CURB TO ROW	OFFSET CL TO CURB TO ROW	OPERATING NO. OF CROSSINGS	SUBSTRUCTURE INFORMATION
N.WEST	9+97.58	LT	30.0±	40'	5.18'	RS-94 - 11.50' X 6.0'	
	FIELD NOTES:						OPERATING NUMBER: MH26020
							PAGE NUMBER: 3
N.EAST	9+97.67	RT	25.2±	40'	6.32'	RS-94 - 11.50' X 6.0'	
	FIELD NOTES:						EASEMENT NUMBER: FUTURE
							TYPICAL EASEMENT LAYOUT: FUTURE