

BASIS OF BEARING
 NORTH 89°45'05" EAST BEING THE SOUTH LINE OF THE SOUTHWEST QUARTER (SW 1/4) OF SECTION 35, TOWNSHIP 20 SOUTH, RANGE 59 EAST, M.D.M., AS SHOWN BY MAP ON FILE IN FILE 91, PAGE 28 OF PARCEL MAPS IN THE CLARK COUNTY RECORDER'S OFFICE, CLARK COUNTY, NEVADA.

BENCHMARK
 U.S.C&G.S BRASS DISC SET IN ROCK ON THE EAST SIDE OF CHARLESTON BOULEVARD AND SOUTH OF THE RED ROCK DETENTION BASIN.
 CLV BM NO.: D368 3
 ELEVATION: 989.599 METERS (NAVDB8)
 3426.71 FEET

TO OBTAIN SUMMERLIN VILLAGE 26 - REVERENCE PROJECT MODIFIED DATUM ADD 0.42 FEET TO NAVDB8 DATUM.

LVVWD STATIONING
 REFERENCE PROFILE ON THIS SHEET FOR ALL EX. LVVWD FACILITY STATIONING.

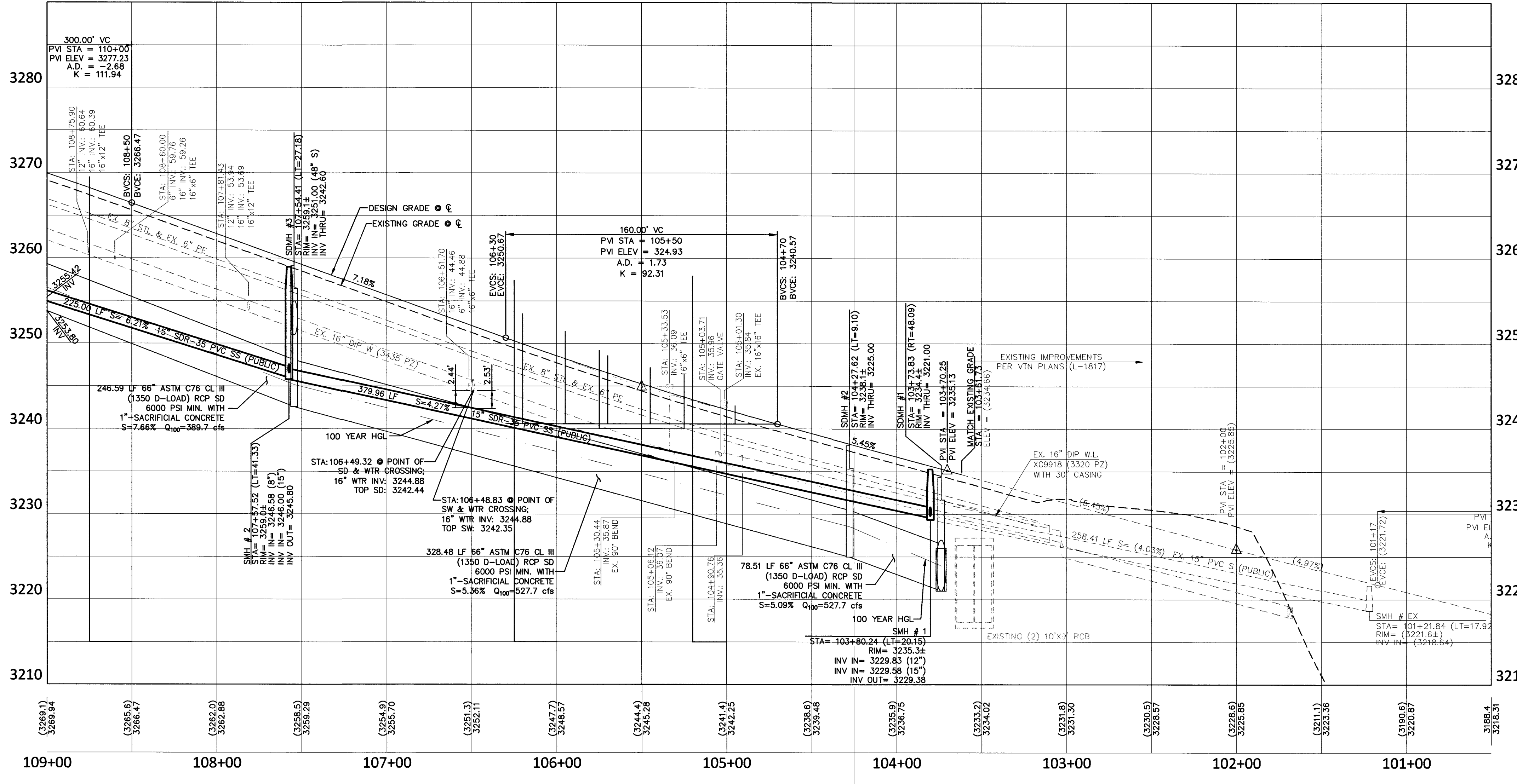
- CONSTRUCTION NOTES:**
- NO. ITEM: USDOCA: UNIFORM STANDARD DRAWINGS CLARK COUNTY AREA
 - 1] INSTALL "A" TYPE ISLAND CURB PER USDOCA DWG NO. 219.
 - 2] INSTALL "L" TYPE CURB & GUTTER PER USDOCA DWG NO. 216.
 - 3] INSTALL A.C. PAVEMENT PER TYPICAL STREET SECTION DETAILS.
 - 4] INSTALL HANDICAP RAMP CURB DEPRESSION (BY OTHERS).
 - 5] VERIFY LOCATION AND ELEVATION OF EXISTING IMPROVEMENT, IF DISCREPANCY EXISTS, NOTIFY ENGINEER PRIOR TO CONSTRUCTION.
 - 6] SAWCUT AND REPLACE EXISTING A.C. PAVEMENT.
 - 7] CONSTRUCT CURB OPENING PER DETAIL '5' SHEET C8.01.
 - 8] CONSTRUCT 0" TALL TYPE "A" CURB PER DETAIL "7" SHEET C8.01.
 - 9] CONSTRUCT CURB TRANSITION FROM 6" TALL CURB TO 0" TALL CURB PER DETAIL "6" SHEET C8.01.
 - 10] TEMPORARY PORTABLE CONCRETE JERSEY BARRIER PER NDOT STD. DWG. NO. R-5-71.1.

- SEWER CONSTRUCTION NOTES:**
- NO. ITEM: DCSWCS DESIGN AND CONSTRUCTION STANDARDS FOR WASTEWATER COLLECTION SYSTEMS
 - 1] INSTALL 72" DIA. SEWER MANHOLE W/CORROSION PROTECTION & DUAL CONCENTRIC LIDS DCSWCS SD-2.
 - 2] INSTALL TEMPORARY PLUG AND CAP.
 - 3] REMOVE PLUG & CONNECT TO EX. SEWER LINE (CONTRACTOR TO VERIFY SIZE, INVERT, AND LOCATION OF EXISTING SEWER LINE) PRIOR TO CONSTRUCTION.
 - 4] INSTALL 60" SEWER MANHOLE W/CORROSION PROTECTION.

- STORM DRAIN CONSTRUCTION NOTES:**
- NO. ITEM: UDACS: PLATE NO. PER UNIFORM DESIGN AND CONSTRUCTION STANDARD FOR WATER DISTRIBUTION SYSTEMS.
 - 1] INSTALL TYPE I STORM DRAIN MANHOLE.
 - 2] INSTALL TYPE II STORM DRAIN MANHOLE.
 - 3] INSTALL TYPE IV STORM DRAIN MANHOLE, SEE DETAIL 4 SHEET C8.01.
 - 4] INSTALL TEMPORARY PLUG AND CAP.
 - 5] INSTALL MODIFIED TYPE "CM" DROP INLET PER USDOCA DWG. NO. 422. ADD STORMWATER INLET CONCRETE STAMP PER USDOCA DWG. NO. 421.
 - 6] INSTALL JUNCTION STRUCTURE.
 - 7] CONNECT TO EXISTING STORM DRAIN LINE (CONTRACTOR TO VERIFY SIZE, INVERT, AND LOCATION OF EXISTING STORM DRAIN LINE).
- CONTRACTOR TO VERIFY SIZE, INVERT, AND LOCATION OF EXISTING STORM DRAIN LINE

FOR TRENCHES SIX (6) FEET WIDE AND GREATER:
 IF THE PIPE MATERIAL IS A CP, THE EXPOSED PIPE MUST BE REPLACED WITH DUCTILE IRON PIPE.
 CONTRACTOR MUST SUBMIT PIPE SUPPORT DETAIL PREPARED BY A NEVADA LICENSED ENGINEER, TO LVVWD ENGINEERING SERVICES BEFORE CONSTRUCTION TO SHOW HOW WATERLINE(S) WILL BE SUPPORTED DURING EXCAVATION AND BACKFILL.
 SUPPORTED PIPE MAY BE EXPOSED FOR NO LONGER THAN 90 DAYS MAXIMUM. IF THE PIPE WILL BE EXPOSED FOR MORE THAN 90 DAYS, PLANS MUST BE SUBMITTED AND APPROVED BY THE LVVWD TO RELOCATE PIPE.

FOR ALL DRY UTILITY CROSSINGS
 - MAINTAIN MINIMUM 12" VERTICAL SEPARATION AT ALL POINTS OF CROSSING
 - MAINTAIN MINIMUM 3' PARALLEL SEPARATION
 - ANY EXCAVATION AT BACK OF CURB MUST REMAIN OPEN FOR INSPECTION OF COPPER SERVICE LATERALS. ANY COPPER SERVICE LATERAL KINKED, BENT OR OTHERWISE DAMAGED MUST BE REPLACED FROM THE MAIN TO THE ANGLE METER STOP.



CALL BEFORE YOU DIG
 AVOID HITTING OVERHEAD TRAFFIC LIGHTS. IT'S COSTLY.

CALL BEFORE YOU DO UNDERGROUND WORK
 CALL 1-702-455-7511

AVOID HITTING OVERHEAD POWER LINES. IT'S COSTLY.
 CALL 1-702-227-2929

COLLINS ENGINEERS ASSUMES NO RESPONSIBILITY FOR EXISTING UTILITY LOCATIONS AND ELEVATIONS. THE UTILITIES SHOWN ON THIS DRAWING HAVE BEEN PLOTTED FROM THE BEST AVAILABLE INFORMATION. IT IS, HOWEVER, THE CONTRACTOR'S RESPONSIBILITY TO FIELD VERIFY THE LOCATION AND ELEVATION OF ALL UTILITIES PRIOR TO THE COMMENCEMENT OF ANY CONSTRUCTION. CONTRACTOR TO FIELD VERIFY ALL EXISTING SITE CONDITIONS PRIOR TO CONSTRUCTION. IF A CONFLICT EXISTS BETWEEN WHAT IS SHOWN ON THESE DRAWINGS AND WHAT EXISTS IN THE FIELD, THE CONTRACTOR IS TO NOTIFY THE ARCHITECT OR ENGINEER IMMEDIATELY.

LEGEND

EXISTING	PROPOSED	EXISTING	PROPOSED	EXISTING	PROPOSED	EXISTING	PROPOSED
PL-RIGHT-OF-WAY	PL-ADJACENT CENTERLINE	PL-ADJACENT CENTERLINE	PL-ADJACENT CENTERLINE	PL-ADJACENT CENTERLINE	PL-ADJACENT CENTERLINE	PL-ADJACENT CENTERLINE	PL-ADJACENT CENTERLINE
PL-ADJACENT CENTERLINE	PL-ADJACENT CENTERLINE	PL-ADJACENT CENTERLINE	PL-ADJACENT CENTERLINE	PL-ADJACENT CENTERLINE	PL-ADJACENT CENTERLINE	PL-ADJACENT CENTERLINE	PL-ADJACENT CENTERLINE
PL-ADJACENT CENTERLINE	PL-ADJACENT CENTERLINE	PL-ADJACENT CENTERLINE	PL-ADJACENT CENTERLINE	PL-ADJACENT CENTERLINE	PL-ADJACENT CENTERLINE	PL-ADJACENT CENTERLINE	PL-ADJACENT CENTERLINE
PL-ADJACENT CENTERLINE	PL-ADJACENT CENTERLINE	PL-ADJACENT CENTERLINE	PL-ADJACENT CENTERLINE	PL-ADJACENT CENTERLINE	PL-ADJACENT CENTERLINE	PL-ADJACENT CENTERLINE	PL-ADJACENT CENTERLINE

PROTECT IN PLACE AND ADJUST LVVWD EXISTING FACILITIES TO FINISHED GRADE. ALL LVVWD FACILITIES SHALL BE ACCESSIBLE AT ALL TIMES.
 ESN. 078 01/05/15

APPROVED FOR CONSTRUCTION

DATE: 4/7/17 PROJECT NO: 124803

COLLINS ENGINEERS
 3130 S. DURANGO DR., SUITE 404
 LAS VEGAS, NV 89117
 PHONE: (702) 248-8000
 FAX: (702) 248-8070
 WWW.COLLINSENGR.COM

PROFESSIONAL ENGINEER-STATE OF NEVADA
 KENNETH T. YAMADA
 EXP. 06-30-18
 NO. 014765

LAKE MEAD BLVD STREET IMPROVEMENTS (I-215 TO DESERT FOOTHILLS)
 UTILITY PLAN & PROFILE
 STA. 109+00.00 TO 101+50.00
 LAKE MEAD BLVD
 CITY OF LAS VEGAS

NO.	DATE	DESIGN BY	DESCRIPTION
1	02/07/17	K.Y.	ADD IRRIGATION SLEEVES
2	05/18/17	J.S.H.	CLARIFY STREETLIGHTING, FAST, EASY PAVEMENT AND DRAINAGE INLET IMPROVEMENTS

CEI PROJECT: 9346
 DESIGN BY: J. SALDIVAR
 DRAWN BY: J. SALDIVAR
 CHECKED BY: K. YAMADA

DATE: 09/01/16
 SCALE: 1" = 40'
 SHEET NUMBER: C5.03
 SHEET 8 OF 16
 H 65667
 107 6673