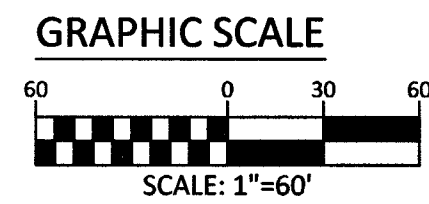
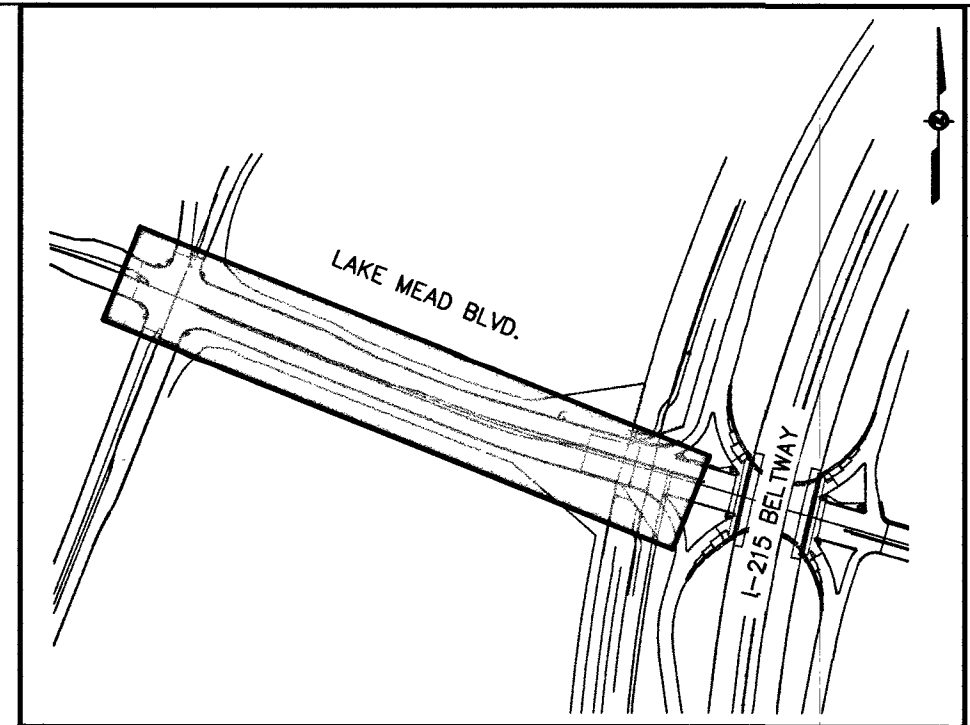


STORM DRAIN MANHOLE TABLE							
SDMH#	MH TYPE	STREET NAME	STATION & OFFSET	MH SIZE	PIPES IN:	PIPES OUT	RIM
1	TYPE IV	LAKE MEAD BLVD	103+73.83 48.09 R	6.00	24" RCP INV IN=3221.00 66" RCP INV IN=3221.00	66" RCP INV OUT=3221.00	3234.4±
2	TYPE IV	LAKE MEAD BLVD	104+27.62 9.10 L	6.00	66" RCP INV IN=3225.00	66" RCP INV OUT=3225.00	3238.1±
3	TYPE IV	LAKE MEAD BLVD	107+54.41 27.18 L	6.00	48" RCP INV IN=3251.00 66" RCP INV IN=3242.60	66" RCP INV OUT=3242.60	3259.1±
4	TYPE IV	LAKE MEAD BLVD	110+00.00 24.01 L	6.00	24" RCP INV IN=3266.00 24" RCP INV IN=3264.50 66" RCP INV IN=3261.50	66" RCP INV OUT=3261.50	3275.8±
5	TYPE IV	LAKE MEAD BLVD	111+88.82 23.83 L	6.00	66" RCP INV IN=3271.50	66" RCP INV OUT=3271.50	3285.3±
6	TYPE IV	LAKE MEAD BLVD	115+13.19 23.52 L	6.00	30" RCP INV IN=3288.50 66" RCP INV IN=3284.50	66" RCP INV OUT=3284.50	3300.8±
7	TYPE IV	LAKE MEAD BLVD	116+22.36 23.41 L	6.00	24" RCP INV IN=3292.34 24" RCP INV IN=3291.07 66" RCP INV IN=3288.96	66" RCP INV OUT=3288.96	3305.3±



KEY MAP  
NTS

**BASIS OF BEARING**

NORTH 89°45'05" EAST BEING THE SOUTH LINE OF THE SOUTHWEST QUARTER (SW 1/4) OF SECTION 35, TOWNSHIP 20 SOUTH, RANGE 59 EAST, M.D.M., AS SHOWN BY MAP ON FILE IN FILE 91, PAGE 28 OF PARCEL MAPS IN THE CLARK COUNTY RECORDER'S OFFICE, CLARK COUNTY, NEVADA

**BENCHMARK**

U.S.C&G'S BRASS DISC SET IN ROCK ON THE EAST SIDE OF CHARLESTON BOULEVARD AND SOUTH OF THE RED ROCK DETENTION BASIN.

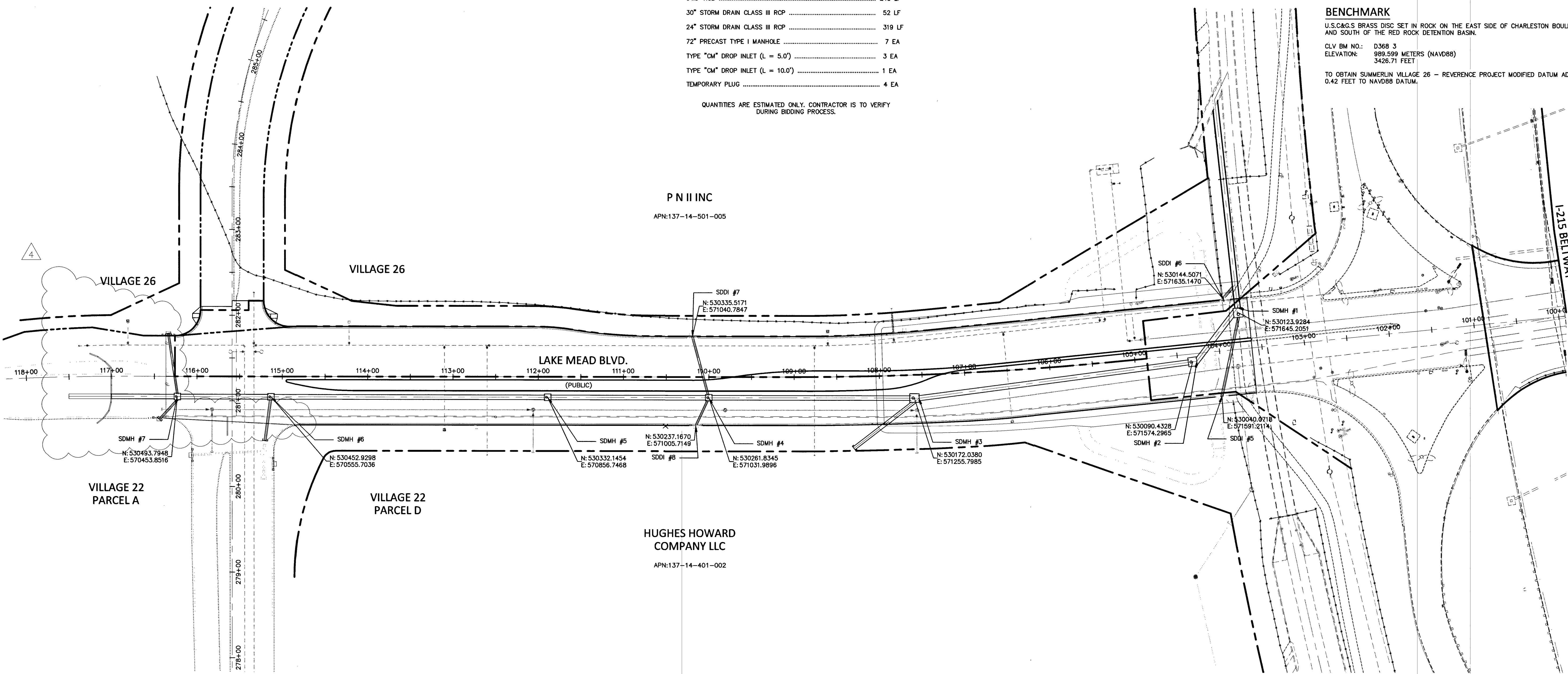
CLV BM NO.: D368 3  
ELEVATION: 989.599 METERS (NAVDB8)  
3426.71 FEET

TO OBTAIN SUMMERLIN VILLAGE 26 - REVERENCE PROJECT MODIFIED DATUM ADD 0.42 FEET TO NAVDB8 DATUM.

**STORM DRAIN QUANTITIES (PUBLIC)**

- 66" STORM DRAIN CLASS III RCP ..... 1354 LF
- 6"x5' RCB ..... 245 LF
- 30" STORM DRAIN CLASS III RCP ..... 52 LF
- 24" STORM DRAIN CLASS III RCP ..... 319 LF
- 72" PRECAST TYPE I MANHOLE ..... 7 EA
- TYPE "CM" DROP INLET (L = 5.0') ..... 3 EA
- TYPE "CM" DROP INLET (L = 10.0') ..... 1 EA
- TEMPORARY PLUG ..... 4 EA

QUANTITIES ARE ESTIMATED ONLY. CONTRACTOR IS TO VERIFY DURING BIDDING PROCESS.



**CALL BEFORE YOU DIG**  
AVOID CUTTING UNDERGROUND UTILITY LINES. IT'S COSTLY.

**CALL BEFORE YOU DO UNDERGROUND WORK**  
AVOID HITTING UNDERGROUND POWER LINES. IT'S COSTLY.

**CALL BEFORE YOU DO OVERHEAD WORK**  
AVOID HITTING OVERHEAD POWER LINES. IT'S COSTLY.

1-800-227-2600

COLLINS ENGINEERS ASSUMES NO RESPONSIBILITY FOR EXISTING UTILITY LOCATIONS AND ELEVATIONS. THE UTILITIES SHOWN ON THIS DRAWING HAVE BEEN PLOTTED FROM THE BEST AVAILABLE INFORMATION. IT IS, HOWEVER, THE CONTRACTOR'S RESPONSIBILITY TO FIELD VERIFY THE LOCATION AND ELEVATION OF ALL UTILITIES PRIOR TO THE COMMENCEMENT OF ANY CONSTRUCTION. CONTRACTOR TO FIELD VERIFY ALL EXISTING SITE CONDITIONS PRIOR TO CONSTRUCTION. IF A CONFLICT EXISTS BETWEEN WHAT IS SHOWN ON THESE DRAWINGS AND WHAT EXISTS IN THE FIELD, THE CONTRACTOR IS TO NOTIFY THE ARCHITECT OR ENGINEER IMMEDIATELY.

**LEGEND**

EXISTING ---E#--- ---T#--- ---W#--- ---SS#--- ---D#--- ---G#--- ①	PROPOSED ---E#--- ---T#--- ---W#--- ---SS#--- ---D#--- ---G#--- ①	EXISTING ---E#--- ---T#--- ---W#--- ---SS#--- ---D#--- ---G#--- ①	PROPOSED ---E#--- ---T#--- ---W#--- ---SS#--- ---D#--- ---G#--- ①	EXISTING ---E#--- ---T#--- ---W#--- ---SS#--- ---D#--- ---G#--- ①	PROPOSED ---E#--- ---T#--- ---W#--- ---SS#--- ---D#--- ---G#--- ①	EXISTING ---E#--- ---T#--- ---W#--- ---SS#--- ---D#--- ---G#--- ①	PROPOSED ---E#--- ---T#--- ---W#--- ---SS#--- ---D#--- ---G#--- ①	EXISTING ---E#--- ---T#--- ---W#--- ---SS#--- ---D#--- ---G#--- ①	PROPOSED ---E#--- ---T#--- ---W#--- ---SS#--- ---D#--- ---G#--- ①	EXISTING ---E#--- ---T#--- ---W#--- ---SS#--- ---D#--- ---G#--- ①	PROPOSED ---E#--- ---T#--- ---W#--- ---SS#--- ---D#--- ---G#--- ①	EXISTING ---E#--- ---T#--- ---W#--- ---SS#--- ---D#--- ---G#--- ①	PROPOSED ---E#--- ---T#--- ---W#--- ---SS#--- ---D#--- ---G#--- ①	EXISTING ---E#--- ---T#--- ---W#--- ---SS#--- ---D#--- ---G#--- ①	PROPOSED ---E#--- ---T#--- ---W#--- ---SS#--- ---D#--- ---G#--- ①	EXISTING ---E#--- ---T#--- ---W#--- ---SS#--- ---D#--- ---G#--- ①	PROPOSED ---E#--- ---T#--- ---W#--- ---SS#--- ---D#--- ---G#--- ①
--	--	--	--	--	--	--	--	--	--	--	--	--	--	--	--	--	--

**COLLINS ENGINEERS**  
3130 S. DURANGO DR., SUITE 404  
LAS VEGAS, NV 89117  
PHONE: (702) 248-8000  
FAX: (702) 248-8070  
www.collinsengr.com

**ENGINEER-STATE OF NEVADA**  
KENNETH YAMADA  
EXP. 6-30  
CIVIL  
1466A  
6-5-17

**LAKE MEAD BLVD STREET IMPROVEMENTS (I-215 TO DESERT FOOTHILLS)**  
STORM DRAIN MASTER PLAN  
LAKE MEAD BLVD  
CITY OF LAS VEGAS

NO.	DATE	DESIGN BY	DESCRIPTION
1	02/23/17	S.S.	CLARIFY STREETLIGHTING, END PAVEMENT AND DRAINAGE INLET IMPROVEMENTS

CEI PROJECT: 9346  
DESIGN BY: J. SALDIVAR  
DRAWN BY: J. SALDIVAR  
CHECKED BY: K. YAMADA  
DATE: 09/01/16  
SCALE: 1" = 60'  
SHEET NUMBER  
**C5.01**  
SHEET 6 OF 16  
H=65667  
107V6673