

KEY MAP
NTS

BASIS OF BEARING

NORTH 89°45'05" EAST BEING THE SOUTH LINE OF THE SOUTHWEST QUARTER (SW 1/4) OF SECTION 35, TOWNSHIP 20 SOUTH, RANGE 59 EAST, M.D.M., AS SHOWN BY MAP ON FILE IN FILE 91, PAGE 28 OF PARCEL MAPS IN THE CLARK COUNTY RECORDER'S OFFICE, CLARK COUNTY, NEVADA.

BENCHMARK

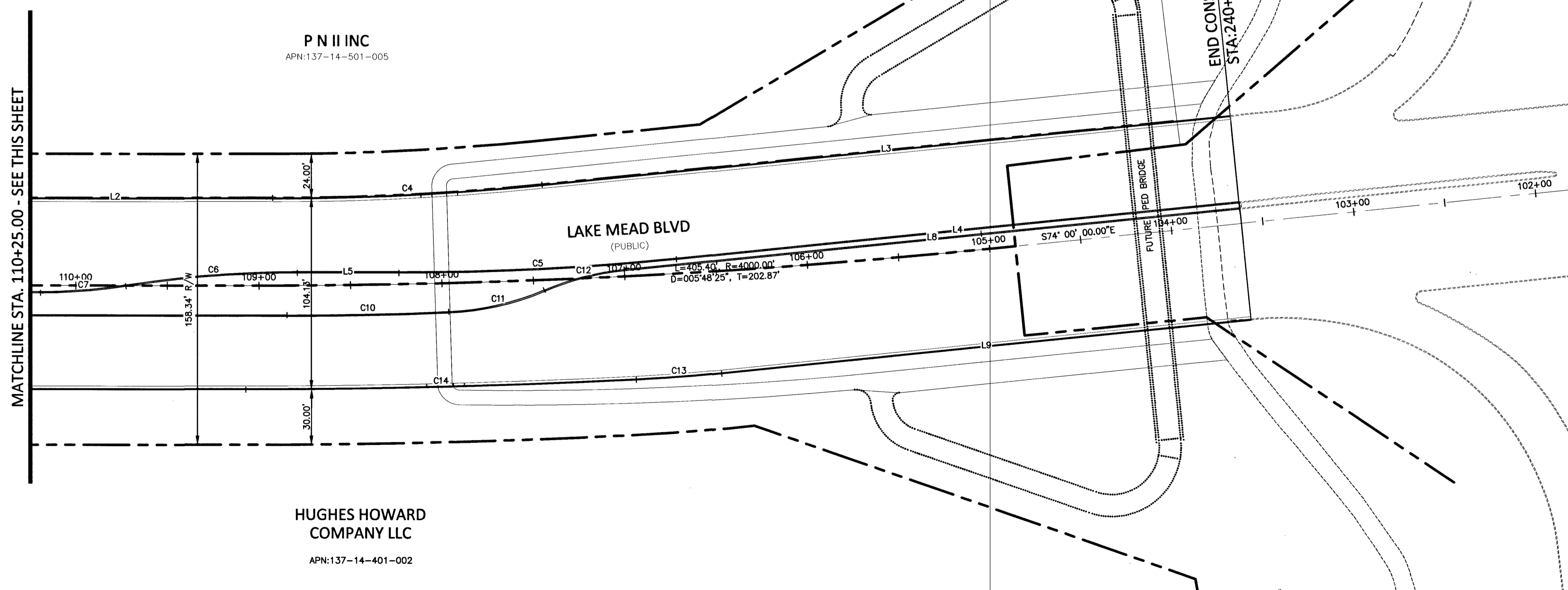
U.S.C.&G.S BRASS DISC SET IN ROCK ON THE EAST SIDE OF CHARLESTON BOULEVARD AND SOUTH OF THE RED ROCK DETENTION BASIN.

CLV BM NO.: D368 3
ELEVATION: 989.599 METERS (NAV888)
3426.71 FEET

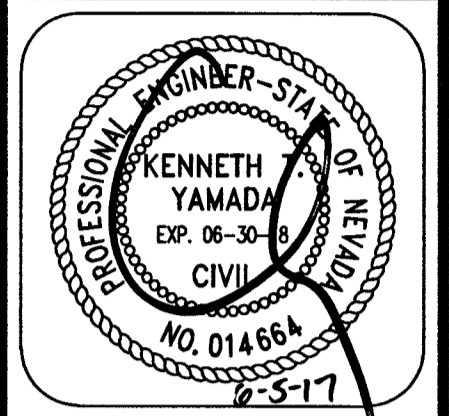
TO OBTAIN SUMMERLIN VILLAGE 26 - REVERENCE PROJECT MODIFIED DATUM ADD 0.42 FEET TO NAV888 DATUM.

| LINE | LENGTH | BEARING |
|------|---------|-------------|
| L1 | 287.00' | N68°11'35"W |
| L2 | 171.82' | N68°11'35"W |
| L3 | 378.10' | S74°00'00"E |
| L4 | 309.11' | N74°00'00"W |
| L5 | 55.56' | N68°11'35"W |
| L6 | 474.78' | N68°11'35"W |
| L7 | 532.72' | N68°11'35"W |
| L8 | 338.01' | N74°00'00"W |
| L9 | 290.81' | S74°00'00"E |
| L10 | 572.47' | S68°11'35"E |
| L11 | 4.14' | N21°48'25"E |

| CURVE | LENGTH | RADIUS | DELTA | TANGENT |
|-------|---------|----------|------------|---------|
| C1 | 47.12' | 30.00' | 90°00'00" | 30.00' |
| C2 | 46.95' | 300.00' | 8°58'01" | 23.52' |
| C3 | 93.90' | 600.00' | 8°58'01" | 47.05' |
| C4 | 147.57' | 1456.00' | 5°48'25" | 73.85' |
| C5 | 152.03' | 1500.00' | 5°48'24" | 76.08' |
| C6 | 91.74' | 600.00' | 8°45'38" | 45.96' |
| C7 | 46.95' | 300.00' | 8°58'01" | 23.52' |
| C8 | 2.88' | 1.00' | 165°08'23" | 7.67' |
| C9 | 77.81' | 300.00' | 14°51'36" | 39.12' |
| C10 | 88.58' | 2000.00' | 2°32'15" | 44.30' |
| C11 | 53.87' | 150.00' | 20°34'34" | 27.23' |
| C12 | 45.31' | 150.00' | 17°18'25" | 22.83' |
| C13 | 46.74' | 960.00' | 2°47'23" | 23.38' |
| C14 | 213.62' | 4056.67' | 3°01'01" | 106.84' |
| C15 | 17.20' | 30.00' | 32°51'02" | 8.84' |
| C16 | 50.27' | 32.00' | 90°00'00" | 32.00' |
| C17 | 50.27' | 32.00' | 89°59'59" | 32.00' |



COLLINS ENGINEERS
3130 S. DURANGO DR., SUITE 404
LAS VEGAS, NV 89117
PHONE: (702) 248-8000
FAX: (702) 248-8070
WWW.COLLINSENGR.COM



LAKE MEAD BLVD STREET IMPROVEMENTS (I-215 TO DESERT FOOTHILLS) HORIZONTAL CONTROL PLAN
LAKE MEAD BLVD
CITY OF LAS VEGAS

| NO. | DATE | DESIGN BY | DESCRIPTION |
|-----|----------|-----------|--------------------------------|
| 4 | 02/23/17 | S.S. | EXTEND DRAINAGE INLET WEST 50' |

CEI PROJECT: 9346
DESIGN BY: J. SALDIVAR
DRAWN BY: J. SALDIVAR
CHECKED BY: K. YAMADA
DATE: 09/01/16
SCALE: 1" = 40'
SHEET NUMBER
C3.01
SHEET 3 OF 16
1465667
107V 6673

CALL BEFORE YOU DIG
AVOID CUTTING UNDERGROUND UTILITY LINES. IT'S COSTLY.

CALL BEFORE YOU DO OVERHEAD WORK
AVOID HITTING OVERHEAD POWER LINES. IT'S COSTLY.

CALL BEFORE YOU DO UNDERGROUND WORK
AVOID HITTING UNDERGROUND TRAFFIC SIGNAL AND STREET LIGHT SYSTEMS. IT'S COSTLY.

CALL 1-702-455-7511
OR
CALL 1-702-432-5300

1-800-227-2600

1-702-227-2929

COLLINS ENGINEERS ASSUMES NO RESPONSIBILITY FOR EXISTING UTILITY LOCATIONS AND ELEVATIONS. THE UTILITIES SHOWN ON THIS DRAWING HAVE BEEN PLOTTED FROM THE BEST AVAILABLE INFORMATION. IT IS, HOWEVER, THE CONTRACTOR'S RESPONSIBILITY TO FIELD VERIFY THE LOCATION AND ELEVATION OF ALL UTILITIES PRIOR TO THE COMMENCEMENT OF ANY CONSTRUCTION. CONTRACTOR TO FIELD VERIFY ALL EXISTING SITE CONDITIONS PRIOR TO CONSTRUCTION. IF A CONFLICT EXISTS BETWEEN WHAT IS SHOWN ON THESE DRAWINGS AND WHAT EXISTS IN THE FIELD, THE CONTRACTOR IS TO NOTIFY THE ARCHITECT OR ENGINEER IMMEDIATELY.

LEGEND

| | | | | |
|------------------|------------------|----------------------------|----------------------------|------------------------|
| EXISTING (0.00%) | PROPOSED (0.00%) | EXISTING | PROPOSED | PL-RIGHT-OF-WAY |
| XX | XX | AC PAVEMENT | AC PAVEMENT | PL-ADJACENT CENTERLINE |
| XX | XX | 6" TYPE "A" CURB | 6" TYPE "A" CURB | EASEMENT LINE |
| XX | XX | 24" TYPE "L" CURB & GUTTER | 24" TYPE "L" CURB & GUTTER | FLOW LINE |
| XX | XX | 30" ROLL CURB | 30" ROLL CURB | SAWCUT LINE |
| XX | XX | STORM MANHOLE | STORM MANHOLE | |
| XX | XX | DROP INLET | DROP INLET | |
| XX | XX | CONTOUR | CONTOUR | |
| XX | XX | RETAINING WALL | RETAINING WALL | |
| XX | XX | SCREEN WALL | SCREEN WALL | |