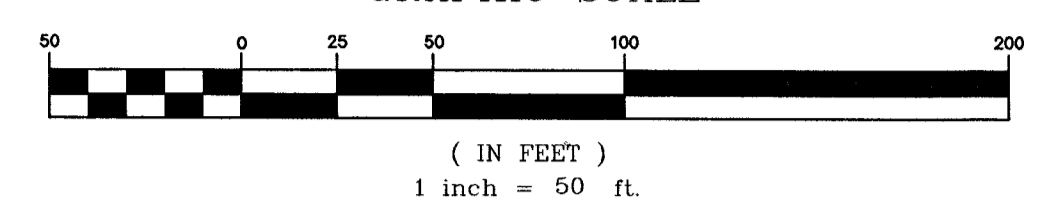


GRAPHIC SCALE



THE MONUMENTATION TIE MAP OF HORSE & COKE

(A COMMON INTEREST COMMUNITY)
AS SHOWN IN THE OFFICE OF THE CLARK COUNTY, NEVADA RECORDER IN BOOK 149, PAGE 65 OF PLATS LYING
WITHIN SECTION 9, TOWNSHIP 19 SOUTH, RANGE 60 EAST, M.D.M., CITY OF LAS VEGAS, CLARK COUNTY, NEVADA

FOUND 1.5" ALUMINUM CAP, ILLEGIBLE
NENE 1/64 9

LINE TABLE		
LINE NO.	BEARINGS	LENGHT
L1	N86°11'48"E	61.35'
L2	N86°11'48"E	29.60'
L3	N86°11'48"E	31.75'
L4	S88°43'32"E	113.79'

CURVE TABLE				
CURVE NO.	DELTA	RADIUS	LENGTH	TANGENT
C1	1°36'08"	200.00'	5.59'	2.80'
C2	5°04'40"	200.00'	17.72'	8.87'
C3	5°04'40"	200.00'	17.72'	8.87'

SURVEYOR'S CERTIFICATE

I, JAMES T. STOVALL, A PROFESSIONAL LAND SURVEYOR LICENSED IN THE STATE OF NEVADA AS AGENT FOR TANEY ENGINEERING, INC., DO HEREBY CERTIFY THAT:

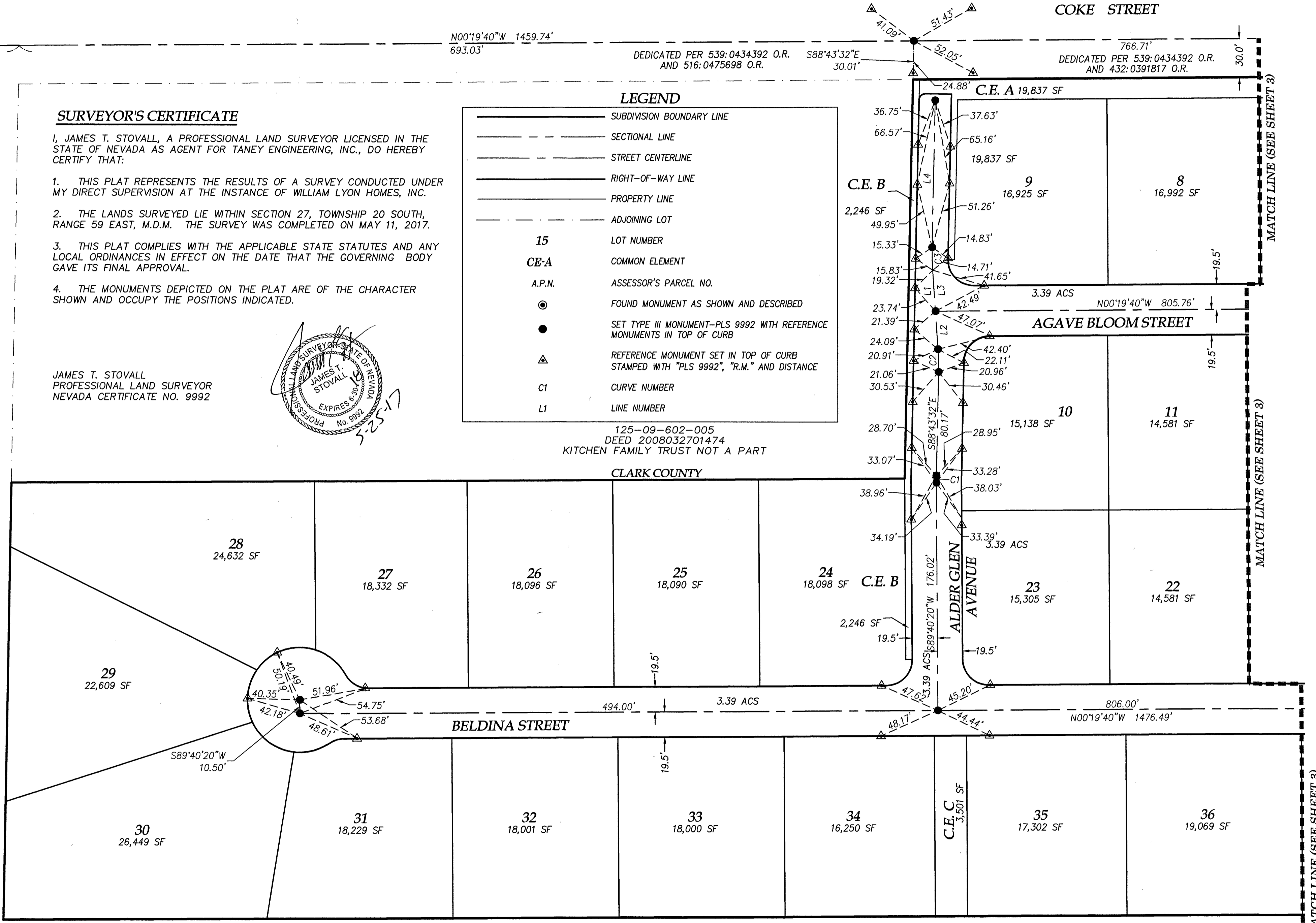
- THIS PLAT REPRESENTS THE RESULTS OF A SURVEY CONDUCTED UNDER MY DIRECT SUPERVISION AT THE INSTANCE OF WILLIAM LYON HOMES, INC.
- THE LANDS SURVEYED LIE WITHIN SECTION 27, TOWNSHIP 20 SOUTH, RANGE 59 EAST, M.D.M. THE SURVEY WAS COMPLETED ON MAY 11, 2017.
- THIS PLAT COMPLIES WITH THE APPLICABLE STATE STATUTES AND ANY LOCAL ORDINANCES IN EFFECT ON THE DATE THAT THE GOVERNING BODY GAVE ITS FINAL APPROVAL.
- THE MONUMENTS DEPICTED ON THE PLAT ARE OF THE CHARACTER SHOWN AND OCCUPY THE POSITIONS INDICATED.

JAMES T. STOVALL
PROFESSIONAL LAND SURVEYOR
NEVADA CERTIFICATE NO. 9992



LEGEND

- SUBDIVISION BOUNDARY LINE
- SECTIONAL LINE
- STREET CENTERLINE
- RIGHT-OF-WAY LINE
- PROPERTY LINE
- ADJOINING LOT
- 15 LOT NUMBER
- CE-A COMMON ELEMENT
- A.P.N. ASSESSOR'S PARCEL NO.
- FOUND MONUMENT AS SHOWN AND DESCRIBED
- SET TYPE III MONUMENT-PLS 9992 WITH REFERENCE MONUMENTS IN TOP OF CURB
- REFERENCE MONUMENT SET IN TOP OF CURB STAMPED WITH "PLS 9992", "R.M." AND DISTANCE
- CI CURVE NUMBER
- L1 LINE NUMBER



MAGGIE AVENUE
BASIS OF BEARINGS
589°23'29"E
675.56'

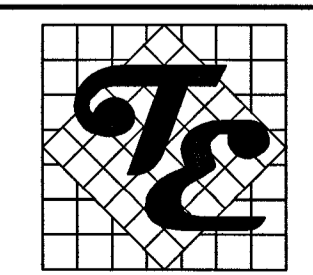
FOUND 1.5" ALUMINUM CAP
"PLS 14519"
CANE 1/64 9

125-09-602-003
DEED 2008032701475
KITCHEN FAMILY TRUST NOT A PART
CLARK COUNTY

125-04-301-005
CITY OF LAS VEGAS
FILE 114 PAGE 14 OF PARCEL MAPS
NOT A PART

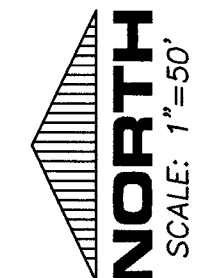
BASIS OF BEARINGS

SOUTH 89°23'29" EAST, BEING THE BEARING OF THE NORTH LINE OF THE SOUTHWEST QUARTER (SW 1/4) OF THE NORTHEAST QUARTER (NE 1/4) OF THE NORTHEAST QUARTER (NE 1/4) OF SECTION 9, TOWNSHIP 19 SOUTH, RANGE 60 EAST, AS SHOWN BY MAP THEREOF ON FILE IN BOOK 118, PAGE 40 OF PLATS IN THE OFFICE OF THE COUNTY RECORDER, CLARK COUNTY, NEVADA.

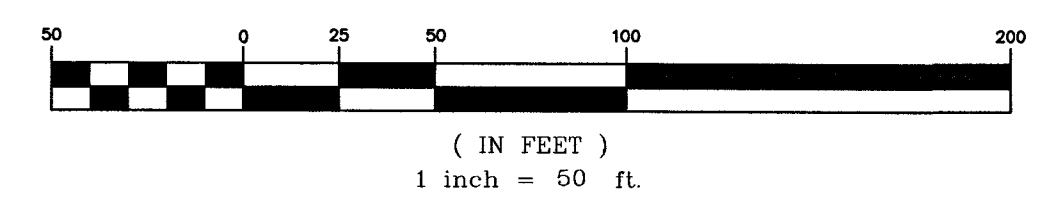


TANEY ENGINEERING
6030 S. JONES BOULEVARD
LAS VEGAS, NEVADA 89118
(702) 362-8844 FAX: (702) 362-5233

H55549



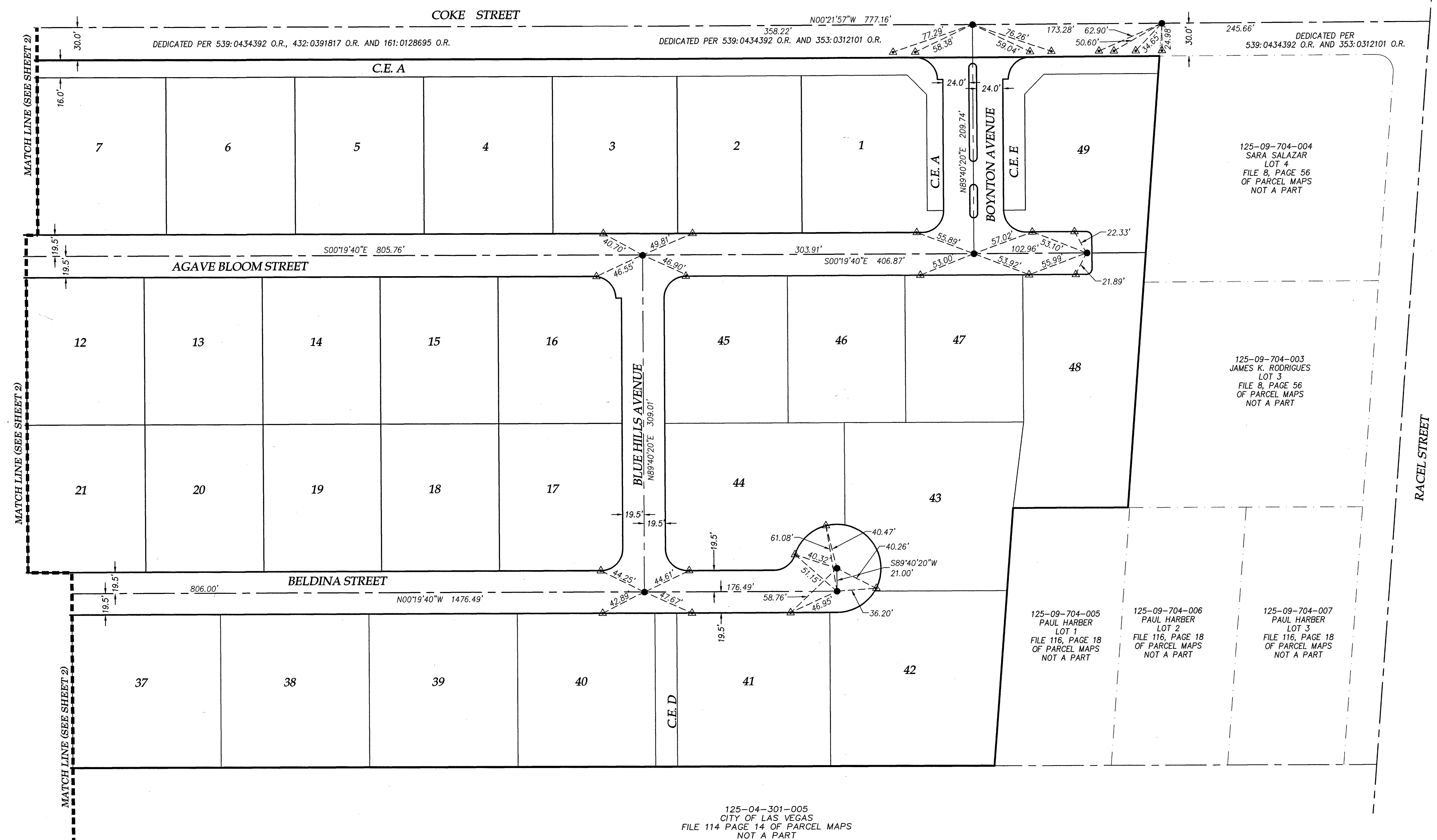
GRAPHIC SCALE



THE MONUMENTATION TIE MAP OF HORSE & COKE

(A COMMON INTEREST COMMUNITY)

AS SHOWN IN THE OFFICE OF THE CLARK COUNTY, NEVADA RECORDER IN BOOK 149, PAGE 65 OF PLATS LYING WITHIN SECTION 9, TOWNSHIP 19 SOUTH, RANGE 60 EAST, M.D.M., CITY OF LAS VEGAS, CLARK COUNTY, NEVADA



125-09-704-004
SARA SALAZAR
LOT 4
FILE 8, PAGE 56
OF PARCEL MAPS
NOT A PART

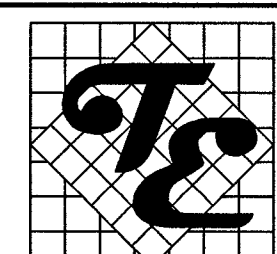
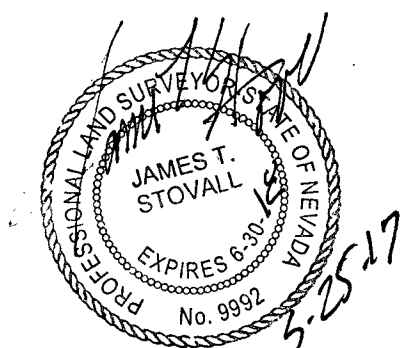
125-09-704-003
JAMES K. RODRIGUES
LOT 3
FILE 8, PAGE 56
OF PARCEL MAPS
NOT A PART

125-09-704-005
PAUL HARBER
LOT 1
FILE 116, PAGE 18
OF PARCEL MAPS
NOT A PART

125-09-704-006
PAUL HARBER
LOT 2
FILE 116, PAGE 18
OF PARCEL MAPS
NOT A PART

125-09-704-007
PAUL HARBER
LOT 3
FILE 116, PAGE 18
OF PARCEL MAPS
NOT A PART

125-04-301-005
CITY OF LAS VEGAS
FILE 114 PAGE 14 OF PARCEL MAPS
NOT A PART



TANEY ENGINEERING
6030 S. JONES BOULEVARD
LAS VEGAS, NEVADA 89118
(702) 362-8844 FAX: (702) 362-5233