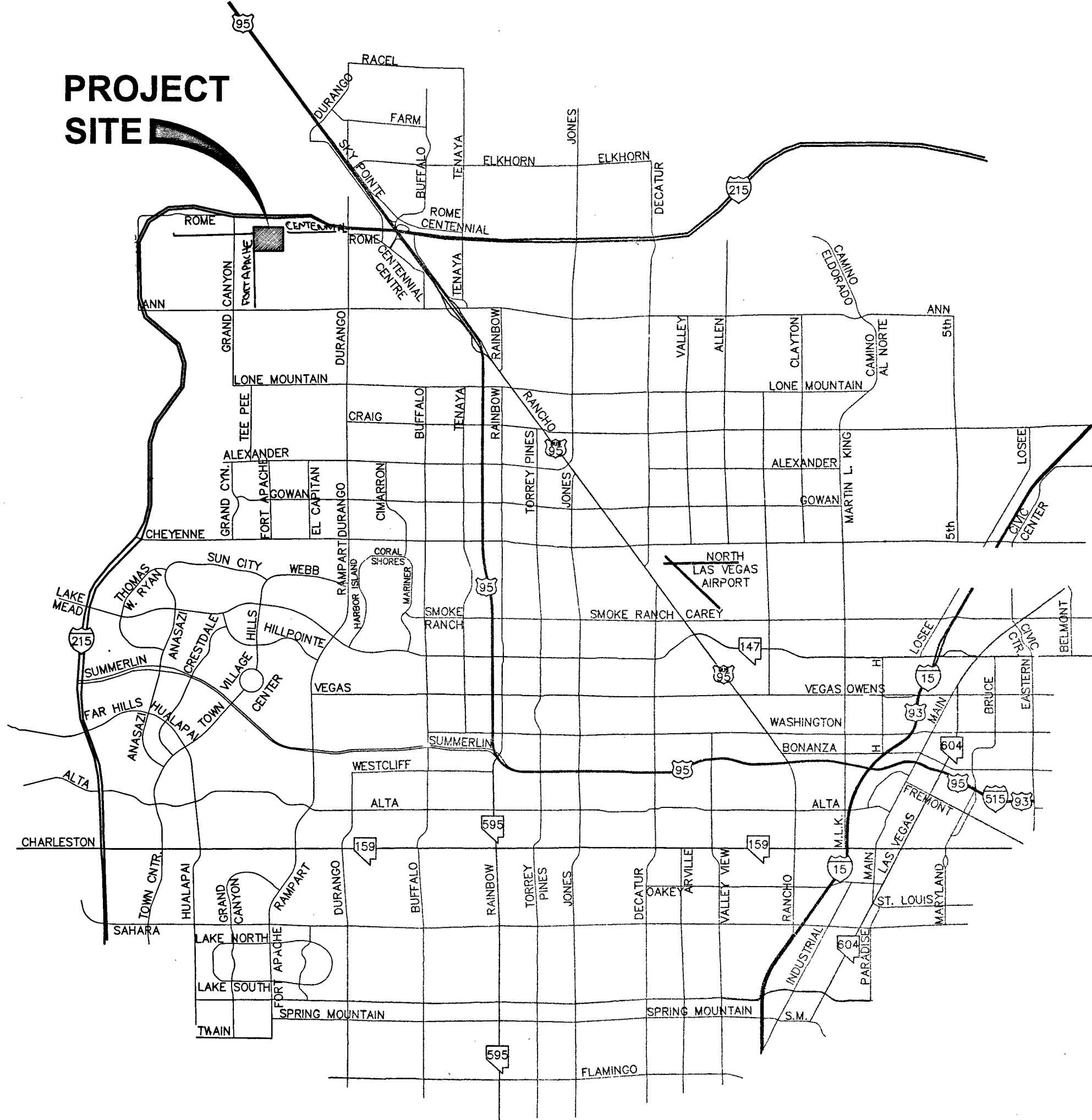


IMPROVEMENT PLANS FOR ST. ANTHONY OF PADUA PARKING LOT ADDITION 6350 N. FORT APACHE ROAD

A PORTION OF THE NORTH LINE OF THE NORTHWEST QUARTER (NW 1/4) OF THE NORTHWEST QUARTER (NW 1/4) OF SECTION 29, TOWNSHIP 19 SOUTH, RANGE 60 EAST, M.D.M., AS SHOWN ON FILE WITH THE CLARK COUNTY RECORDER'S OFFICE IN FILE 107, PAGE 31 OF SURVEYS.

A.P.N.: 125-29-101-062
8.27 ACRES

PROJECT
SITE



REV #	REVISION DESCRIPTION	SHEET(S)	APPD BY	DATE APPD

ABBREVIATIONS

ABAN	ABANDON	INV	INVERT
AIP	ABANDON IN PLACE	ISL	ISLAND
AGG	AGGREGATE	JB	JUNCTION BOX
ALT	ALTERNATE	LOC	LENGTH OF CURB
A	ANODE, GAS	LT	LEFT
ACP	ASBESTOS CEMENT PIPE	LF	LINEAR FEET
AVE	ASPHALTIC CONCRETE	LVWD	LAS VEGAS VALLEY WATER DISTRICT
BC	BACK OF CURB	MH	MANHOLE
BCR	BACK OF CURB RADIUS	MAX	MAXIMUM
BVC	BEGINNING OF VERTICAL CURVE	MIN	MINIMUM
BM	BENCHMARK	MON	MONOLITHIC
BOUNDARY LINE	BOUNDARY LINE	N/O	NORTH OF
CATV	CABLE TELEVISION	NTS	NOT TO SCALE
C-C	CENTER TO CENTER	OC	ON CENTER
CL	CENTERLINE	OG	OPEN-GRADED PAVEMENT, ORIGINAL GROUND
CSC	CITY OF BOULDER CITY	PVMT	PAVEMENT
CLV	CITY OF LAS VEGAS	PI	POINT OF INTERSECTION
COH	CITY OF HENDERSON	PRC	POINT OF REVERSE CURVE
CM	CITY OF MESQUITE	PC	POINT OF CURVE
ONLV	CITY OF NORTH LAS VEGAS	PT	POINT OF TANGENCY
CC	CLARK COUNTY	PCC	POINT OF COMPOUND CURVE
COWRD	CLARK COUNTY WATER RECLAMATION DISTRICT	PCC, CONC	PORTLAND CEMENT CONCRETE
CO	CLEAN OUT, SEWER	PP	POWER POLE
COMM	COMMERCIAL	P	PROPERTY LINE
CONC, PCC	CONCRETE	PROP	PROPOSED
CONST	CONSTRUCTION OR CONSTRUCT	PULL BOX	PULL BOX
COR	CORNER	RP	RADIUS POINT
CMP	CORRUGATED METAL PIPE	R	RADIUS
CSP	CORRUGATED STEEL ARCH PIPE	RR	RAILROAD
C&G	CURB & GUTTER	REINF	REINFORCED
CIP	CAST IRON PIPE	RC	REINFORCED CONCRETE
COL	COLUMN	RCB	REINFORCED CONCRETE BOX
CU YD, CY	CUBIC YARD	RCSP	REINFORCED CONCRETE PIPE
CU FT, CF	CUBIC FOOT	RELOC	RELOCATE
CULV	CULVERT	RT	RIGHT
CF	CURB FACE	R/W	RIGHT-OF-WAY
DEPT	DEPARTMENT	RD	ROAD
DIA	DIAMETER	SS	SANITARY SEWER
DWY	DRIVEWAY	S/O	SOUTH OF
ESMT	EASEMENT	SW	SIDEWALK
F/O	EAST OF	SQ FT, SF	SQUARE FOOT
EO	EDGE OF PAVEMENT	SQ YD, SY	SQUARE YARD
E	EDGE OF OIL	STA	STATION
EM	ELECTRIC	SHP	STEEL HIGH-PRESSURE PIPE
ELEV	ELEVATION	SD	STORM DRAIN
EMBK	EMBANKMENT	STD	STANDARD
EOR	END OF CURB RETURN	STRUCT	STRUCTURAL OR STRUCTURE
EBS	EARTH PROTECTION BOND STATION	SURV	SURVEY
ETS	CATHODE PROTECTION TEST STATION	SLT	STREETLIGHT
EVC	END OF VERTICAL CURVE	TL	TELEPHONE
EXIST	EXISTING	TEMP	TEMPORARY
FT	FEET/FOOT	TBA	TO BE ADJUSTED
FG	FINISH GRADE	TBR	TO BE REMOVED
FA	FIRE ALARM	TC	TOP OF CURB
FH	FIRE HYDRANT	TP	TOP OF PIPE
FLV	FLOW LINE	TS	TRAFFIC SIGNAL
GM	GAS METER	TSI	TRAFFIC SIGNAL INTERCONNECT
GR	GAS PRESSURE REGULATOR	TRANS	TRANSITION
PL-G	PLASTIC GAS	TYP	TYPICAL
SC	STEEL GAS	UG	UNDERGROUND
GB	GRADE BREAK	VAR	VARIABLE
GUT	GUTTER	VERT	VERTICAL
HDWL	HEADWALL	VC	VERTICAL CURVE
IN	INCH	VG	VALLEY GUTTER
INT	INTERSECTION	VCP	VITRIFIED CLAY PIPE
		W	WATER
		WM	WATER METER
		W/O	WEST OF
		YD	YARD

OWNER / DEVELOPER

THE ROMAN CATHOLIC BISHOP
OF LAS VEGAS
P.O. BOX 18316
LAS VEGAS, NEVADA 89114
CONTACT: DECON ARUNA SILVA
PHONE: 702-735-7865
FAX: 702-735-2995

APPROVALS

Allen Pavelka 5-24-17
ALLEN PAVELKA, P.E., #9029
CITY ENGINEER
DATE

Chris Knight 5-25-17
CHRIS KNIGHT, DIRECTOR - BUILDING AND SAFETY
DATE

Kevin 9/6/17
LAS VEGAS FIRE AND RESCUE
DATE

Y. D. Disabdi 5/15/17
LAS VEGAS VALLEY WATER DISTRICT ENGINEERING SERVICES MANAGER
PROJECT NO. 125112 SHEETS: C1.01, C1.02, C3.01, C4.01, AND C&01, C1.03
LVVWD-APPROVED FIRE FLOW = 1750 GPM AT 20 PSI RESIDUAL
DATE

Naia S. Luning 1-5-17
SOUTHWEST GAS CORPORATION
DATE

Latona Garrison 4-4-17
NV ENERGY
DATE

Britt Alasti 3/29/17
COX COMMUNICATIONS LAS VEGAS, INC.
DATE

Deane M. Schomer 3-27-17
CENTRAL TELEPHONE COMPANY D.B.A. CENTURY LINK
DATE

APPROVAL OF THESE PLANS IS LIMITED TO THOSE IMPROVEMENTS CONSTRUCTED IN THE DEDICATED RIGHT-OF-WAY AND/OR DEDICATED EASEMENTS. THIS APPROVAL DOES NOT AUTHORIZE THE CONSTRUCTION OF ANY IMPROVEMENTS THAT DEVIATE FROM ADOPTED STANDARDS AND/OR SPECIFICATIONS, EXCEPT THOSE SPECIFICALLY LISTED UNDER DEVIATIONS FROM STANDARD. THE ENGINEER SHALL RESOLVE ANY DEVIATION OTHER THAN THOSE LISTED IN DEVIATIONS FROM STANDARDS IN FAVOR OF THE UNIFORM STANDARDS DRAWINGS AND SPECIFICATIONS CLARK COUNTY AREA, NEVADA.

NOTE: THIS PLAN CONFORMS TO THE APPLICABLE STANDARDS OF THE PLANNING DEPARTMENT.

NV ENERGY ACKNOWLEDGES THAT WE HAVE RECEIVED YOUR PLANS AND WILL PROVIDE SERVICE TO ALL ELECTRICAL NEEDS ASSOCIATED WITH THIS PROJECT. NV ENERGY RESERVES THE RIGHT TO ADDRESS ANY EXISTING OR FUTURE CONFLICTS ONCE THE FINAL DESIGN IS COMPLETED. THE NEW SERVICE AND THE RESOLUTION OF ANY CONFLICTS WILL BE ACCOMPLISHED PURSUANT TO THE NEVADA PUBLIC UTILITY COMMISSION'S RULES AND REGULATIONS.

THE AFFIXED CENTURYLINK APPROVAL DOES NOT ASSUME OR GUARANTEE LIABILITY FOR KNOWN OR UNKNOWN CONFLICTS WITH EXISTING OR PROPOSED IMPROVEMENTS. RESOLUTION OF ANY CONFLICT WILL BE ACCOMPLISHED PURSUANT TO LOCAL ORDINANCES, NEVADA REVISED STATUTES AND/OR PUBLIC UTILITY COMMISSION RULES AND REGULATIONS.

SHEET INDEX

Sheet Title	Sheet Number
General	
COVER SHEET	C1.01
NOTE SHEET	C1.02
OVERALL SITE MAP	C1.03
Demolition Plans	
DEMOLITION SHEET	C2.01
Utility Plans	
UTILITY SHEET	C3.01
Grading Plans	
GRADING PLAN	C4.01
Horizontal Control And Signage Plans	
HORIZONTAL CONTROL	C5.01
Detail Sheets	
DETAIL SHEET	C6.01

UTILITY PROVIDERS

WATER:	LAS VEGAS VALLEY WATER DISTRICT
SEWER:	CITY OF LAS VEGAS
GAS:	SOUTHWEST GAS CORPORATION
ELECTRIC:	NV ENERGY
TELEPHONE:	CENTURYLINK
CABLE TV:	COX COMMUNICATIONS LAS VEGAS, INC.
TRASH:	REPUBLIC SILVER STATE DISPOSAL SERVICE

GENERAL SITE INFORMATION

PROJECT No.: 161124
DATE: 01/04/2017
SCALE: N/A
DRAWN BY: SAP
DESIGNED BY: SAP
CHECKED BY: GMM

NOTE:
LOCHSA ENGINEERING ASSUMES NO RESPONSIBILITY FOR EXISTING UTILITY LOCATIONS AND ELEVATIONS. THE UTILITIES SHOWN ON THIS PLAN ARE FROM THE BEST AVAILABLE INFORMATION. IT IS THE CONTRACTOR'S RESPONSIBILITY TO FIELD VERIFY THE LOCATION AND ELEVATION OF ALL UTILITIES, INCLUDING BUT NOT LIMITED TO, THE WATER, FIRE, SANITARY SEWER, STORM SEWER, TELEPHONE, POWER, GAS, AND IRRIGATION LINES PRIOR TO THE COMMENCEMENT OF CONSTRUCTION. IF CONFLICT EXISTS IN THE FIELD, THE CONTRACTOR IS TO NOTIFY THE PROJECT ARCHITECT, OWNER'S REPRESENTATIVE AND THE PROJECT ENGINEER IMMEDIATELY.

A.P.N.:
125-29-101-062

BASIS OF BEARINGS:
BASIS OF BEARINGS FOR THIS SURVEY IS THE NORTH LINE OF THE NORTHWEST QUARTER (NW 1/4) OF THE NORTHWEST QUARTER (NW 1/4) OF SECTION 29, TOWNSHIP 19 SOUTH, RANGE 60 EAST, M.D.M., AS SHOWN ON FILE WITH THE CLARK COUNTY RECORDER'S OFFICE IN FILE 107, PAGE 31 OF SURVEYS. SAID LINE BEARS: S89°30'32"E

BENCHMARK:
BENCHMARK NO. 60 - BLV9029NW6 FOUND CITY OF LAS VEGAS PIN AND ROUND PLATE IN CONCRETE WALL FOOTING, SOUTHEAST CORNER OF CENTENNIAL PKWY. AND CAMPBELL RD. B ELEVATION = 2578.16 FEET / 785.825 METERS (N AVO 88 DATUM)

Call before you Dig
Avoid cutting underground utility lines. It's costly.

CALL 811
or
1-800-227-2800

FAST
Call before you Dig
Underground

CALL BEFORE YOU DIG
AVOID HITTING OVERHEAD POWER LINES. IT'S COSTLY.

1-702-432-5300
FRESH & HOT AIR SYSTEM
OF TRANSPORTATION

1-702-227-2929

CL OR SURVEY LINE	EASEMENT LINE	DESCRIPTION:	CONTOUR LINES	EDGE OF PAVEMENT	"A" TYPE CURBS	"L" TYPE CURBS	WALLS	FENCES	AC PAVEMENT	CONCRETE	SPOT ELEVATIONS	SIGNS	MANHOLE W/ DESCRIPTION	MANHOLE DESCRIPTIONS	FIRE HYDRANTS	GATE VALVES	REDUCERS	CLEAN OUTS	UTILITY BOX OR VAULT	BACKWATER VALVES	100w HPS STREETLIGHTS	150w HPS STREETLIGHTS	200w HPS STREETLIGHTS	250w HPS STREETLIGHTS
PROPERTY LINE	SAWTOOTH LINE	EXISTING:	(2120)								(12.33)		○ = SANITARY SEWER	○ = STORM DRAIN	○ = ELECTRICAL	○ = TELEPHONE				(BW)				
ROW LINE	SCARP LINE	PROPOSED:	(2122)								12.34													

6345 South Jones Blvd
Suite 100
Las Vegas, NV 89118
Phone (702) 365-0312
www.lochsa.com

Lochsa
engineering

GENERAL COVER SHEET

ST. ANTHONY OF PADUA
PARKING LOT ADDITION
SE CORNER OF CENTENNIAL & FT. APACHE

PROJECT No.: 161124
DATE: 01/04/2017
SCALE: N/A
DRAWN BY: SAP
DESIGNED BY: SAP
CHECKED BY: GMM

CALL 811
or
1-800-227-2800

FAST
Call before you Dig
Underground

CALL BEFORE YOU DIG
AVOID HITTING OVERHEAD POWER LINES. IT'S COSTLY.

1-702-432-5300
FRESH & HOT AIR SYSTEM
OF TRANSPORTATION

1-702-227-2929

SHEET No. C1.01
SHEET 1 of 8

1169934
107V.6860

CITY OF LAS VEGAS STREETLIGHT NOTES

- 1. ALL STREET LIGHTING INSTALLATIONS SHALL BE IN ACCORDANCE WITH THE STREET LIGHTING PLANS, THE UNIFORM STANDARD SPECIFICATIONS FOR PUBLIC WORKS CONSTRUCTION OFF-SITE IMPROVEMENTS, CLARK COUNTY AREA, NEVADA, LATEST REVISION, AND THE UNIFORM STANDARD DRAWINGS FOR PUBLIC WORKS CONSTRUCTION OFF-SITE IMPROVEMENTS, CLARK COUNTY AREA, NEVADA, LATEST REVISION, AND ANY ADOPTED SPECIAL AREA STANDARDS.
2. NO DEVIATION OF STREET LIGHT, PULL BOX, CONDUITS (ETC.) LOCATIONS SHALL BE PERMITTED WITHOUT WRITTEN APPROVAL OF TRAFFIC ENGINEERING AND THE CITY ENGINEER.
3. ALL EXISTING STREET LIGHTING SHALL REMAIN OPERATIONAL DURING CONSTRUCTION.
4. ALL STREET LIGHTING CONDUITS STUB SHALL HAVE AT LEAST ONE GREEN #8 THW WIRE INSTALLED, AS TRACER WIRE, WHEN EMPTY CONDUIT IS COMPLETELY INSTALLED FROM PB TO PB, IT SHALL HAVE MINIMUM OF 2 #4 AND 1 #8 THW WIRE WITH THE ENDS TAPED OR "SAFE OFF" PRIOR TO FINAL INSPECTION.
5. ANY STRUCTURE SUCH AS BLOCK WALLS, CHAIN LINK FENCES, RETAINING WALLS, ETC., SHALL LEAVE A MINIMUM CLEARANCE IN ACCORDANCE WITH THE USD NO. 320A.
6. AS-BUILT DRAWINGS SHALL BE SUPPLIED TO THE TEFD PRIOR TO ANY PRE-FINAL INSPECTION. THE ASBUILT DRAWING NEEDS TO BE STAMPED AS-BUILT AND SIGNED BY THE PREPARER.
7. SERVICE POINT SHALL BE COORDINATED WITH NV ENERGY COMPANY, AND WHEREVER POSSIBLE, BE LOCATED NEAR THE CENTER OF THE CIRCUIT. SERVICE POINTS SHALL BE SHOWN ON THE CIVIL PLANS.
8. IT SHALL BE ASSUMED THAT IN THE ABSENCE OF AN EXISTING, WORKABLE CIRCUIT TO ATTACH TO, ALL INSTALLATIONS SHALL REQUIRE A NEW SERVICE FOR OPERATION OF THE CIRCUIT.
9. WHEREVER THERE IS AN OVERHEAD UTILITY THAT MAY CONFLICT WITH THE INSTALLATION OF STREET LIGHTING CIRCUITS AND/OR POLES, THESE CONFLICTS MUST BE RESOLVED BETWEEN THE DEVELOPER AND THE UTILITIES INVOLVED, AT NO EXPENSE TO THE CITY OF LAS VEGAS, BEFORE STREETLIGHT BASES ARE INSTALLED.
10. THE CONTRACTOR SHALL FURNISH COMPLETE SERVICE TO TRANSFORMERS AND CONTROL SYSTEMS IF REQUIRED ON PLANS.
11. THE DEVELOPER/OWNER WILL BE REQUIRED TO SUPPLY POWER TO ALL NEW PUBLIC STREET LIGHTS INSTALLED UNDER THIS DESIGN PRIOR TO BOND RELEASE OR PROJECT COMPLETION. THE DEVELOPER/OWNER WILL BE RESPONSIBLE FOR ALL ITEMS ASSOCIATED WITH THE INSTALLATION, CONSTRUCTION, ENERGIZING, MAINTENANCE AND OPERATIONAL COST OF SAID STREET LIGHTS PRIOR TO PROJECT COMPLETION. REFER TO THE PLAN FOR ANY NEW SERVICE REQUIREMENTS. THE TRANSFER OF OWNERSHIP FROM THE DEVELOPER/OWNER TO THE CITY OF LAS VEGAS FOR ALL NEW PUBLIC STREET LIGHTS AND/OR SERVICE IS INSTALLED UNDER THIS PLAN AND WILL BE IN CONJUNCTION WITH THIS PROJECT COMPLETION. COORDINATE ALL MAINTENANCE AND OPERATIONAL TRANSFERS WITH THE CITY OF LAS VEGAS TRAFFIC ENGINEERING DEPARTMENT (TEFD) AT (702) 229-6331.
REVISED 04/15/10

CITY OF LAS VEGAS GRADING NOTES

- 1. IN THE EVENT THAT ANY UNFORESEEN CONDITIONS NOT COVERED BY THESE NOTES ARE ENCOUNTERED DURING GRADING OPERATIONS, THE OWNER/ENGINEER SHALL BE IMMEDIATELY NOTIFIED FOR DIRECTION.
2. IT SHALL BE THE RESPONSIBILITY OF THE CONTRACTOR TO PERFORM ALL NECESSARY CUTS AND FILLS WITHIN THE LIMITS OF THIS PROJECT AND THE RELATED OFF-SITE WORK, SO AS TO GENERATE THE DESIRED SUBGRADE, FINISH GRADES AND SLOPES SHOWN.
3. CONTRACTOR SHALL TAKE FULL RESPONSIBILITY FOR ALL EXCAVATION, ADEQUATE SHORING SHALL BE DESIGNED AND PROVIDED BY THE CONTRACTOR TO PREVENT UNDERMINING OF ANY ADJACENT FEATURES OR FACILITIES AND/OR CAVING OF THE EXCAVATION.
4. THE CONTRACTOR IS WARNED THAT AN EARTHWORK BALANCE WAS NOT NECESSARILY THE INTENT OF THIS PROJECT. ANY ADDITIONAL MATERIAL REQUIRED OR LEFTOVER MATERIAL FOLLOWING COMPLETION OF THE PROJECT IS THE RESPONSIBILITY OF THE CONTRACTOR.
5. THE GRADING CONTRACTOR IS RESPONSIBLE TO COORDINATE WITH THE OWNER TO PROVIDE FOR THE REQUIREMENTS OF THE PROJECT STORM WATER POLLUTION PREVENTION PLAN (SWPPP) AND ASSOCIATED PERMIT.
6. CONTRACTOR SHALL GRADE TO THE LINES AND ELEVATIONS SHOWN ON THE PLANS WITHIN THE FOLLOWING HORIZONTAL AND VERTICAL TOLERANCES AND DEGREES OF COMPACTION, IN THE AREAS INDICATED:
A. PAVEMENT AREA SUBGRADE 0.14" HORIZONTAL, +0.0" TO -0.1" VERTICAL, 95% COMPACTION
B. ENGINEERED FILL 0.5" HORIZONTAL, +0.1" TO -0.1" VERTICAL, 95% COMPACTION
CONSTRUCTION TESTING SHALL BE PERFORMED BY THE OWNER OR HIS REPRESENTATIVE.
7. ALL CUT AND FILL SLOPES SHALL BE PROTECTED UNTIL EFFECTIVE EROSION CONTROL HAS BEEN ESTABLISHED.
8. THE USE OF POTABLE WATER WITHOUT A SPECIAL PERMIT FOR BUILDING OR CONSTRUCTION PURPOSES INCLUDING CONSOLIDATION OF BACKFILL OR DUST CONTROL IS PROHIBITED. THE CONTRACTOR SHALL OBTAIN ALL NECESSARY PERMITS FOR CONSTRUCTION WATER.
9. THE CONTRACTOR SHALL MAINTAIN THE STREETS, SIDEWALKS AND ALL OTHER PUBLIC RIGHT-OF-WAY IN A CLEAN, SAFE AND USABLE CONDITION. ALL SPILLS OF SOIL, ROCK OR CONSTRUCTION DEBRIS SHALL BE PROMPTLY REMOVED FROM THE PUBLICLY OWNED PROPERTY DURING CONSTRUCTION AND AT THE END OF THE PROJECT. ALL ADJACENT PROPERTY, PRIVATE OR PUBLIC SHALL BE MAINTAINED IN A CLEAN, SAFE AND USABLE CONDITION.
10. IN THE EVENT THAT ANY TEMPORARY CONSTRUCTION ITEM IS REQUIRED THAT IS NOT SHOWN ON THESE DRAWINGS, THE OWNER AGREES TO PROVIDE AND INSTALL SUCH ITEM AT HIS OWN EXPENSE AND AT THE DIRECTION OF THE CITY ENGINEER. TEMPORARY CONSTRUCTION INCLUDES DITCHES, E.R.M.S, ROAD SIGNS AND BARRICADES, ETC.
REVISED 04/15/10

CITY OF LAS VEGAS SEWER NOTES

- 1. ALL CONSTRUCTION AND MATERIALS SHALL BE IN ACCORDANCE WITH THE LATEST EDITION OF THE DESIGN AND CONSTRUCTION STANDARDS FOR WASTEWATER COLLECTION SYSTEMS AND THE UNIFORM STANDARD SPECIFICATIONS FOR PUBLIC WORKS CONSTRUCTION OFF-SITE IMPROVEMENTS, CLARK COUNTY AREA, NEVADA, AS AMENDED. IT WILL BE THE RESPONSIBILITY OF THE CONTRACTOR TO BE AWARE OF THE CONTENTS OF THE ABOVE SPECIFICATIONS.
2. IT SHALL BE THE CONTRACTOR'S RESPONSIBILITY TO PERFORM CONSTRUCTION AS PER PLANS. ANY ADDITIONS, DELETIONS, OR CHANGES SHALL FIRST MEET WITH THE APPROVAL OF THE CITY ENGINEER.
3. CHISEL "S" OR "G" IN CURBS WHERE SEWER OR GAS LATERALS PASS UNDER THE CURB.
4. POLYVINYL (PVC) SEWER PIPE SHALL MEET ASTM D-3034 SR-35 SPECIFICATIONS, INSTALLED WITH SAND BEDDING AND BACKFILL OF TYPE II AGGREGATE BASE.
5. ALL MANHOLES PAVED IN STREETS EIGHTY (80) FOOT R/W AND LARGER SHALL HAVE CONCRETE COLLARS. STREETS LESS THAN EIGHTY (80) FOOT R/W WILL REQUIRE RETROFIT IF PAVING DOES NOT CONFORM TO CITY STANDARDS AT THE MANHOLE.
6. TEE SADDLES SHALL BE USED TO CONNECT SEWER LATERALS TO EXISTING MAIN LINES UP TO TWELVE INCH (12) DIAMETER. CONNECTIONS TO FIFTEEN INCH (15) OR LARGER MAINS SHALL REQUIRE SPECIAL PROCEDURES. IN LINE "S" SHALL BE USED ON LINES TWELVE INCHES (12) OR ABOVE.
7. WATER MAINS SHALL BE PROTECTED IN ACCORDANCE WITH LVVWD STANDARDS WHENEVER A SEWER MAIN CROSSES OVER A WATER MAIN OR THE SEWER IS LESS THAN EIGHTEEN INCH (18) UNDER A WATER MAIN.
8. ALL CONTRACTORS INSTALLING SEWER MAINS THAT WILL BE UNDER THE JURISDICTION OF THE CITY OF LAS VEGAS MUST BE STATE OF NEVADA CLASS "A" CONTRACTORS.
9. THE CITY OF LAS VEGAS WILL NOT ACCEPT ANY SEWER MAINS WHICH HAVE A VERTICAL DEFLECTION OF MORE THAN ONE TENTH (0.1) OF A FOOT FROM THE APPROVED CONSTRUCTION PLANS AT ANY LOCATION. SEWER MAINS FOUND TO EXCEED THIS TOLERANCE WILL HAVE TO BE REPAIRED OR REMOVED OR REPLACED TO THE SATISFACTION OF THE CITY ENGINEER PRIOR TO ACCEPTANCE BY THE CITY OF LAS VEGAS.
10. INSTALLATION OF CURVED SEWER REQUIRES THE USE OF C-900 PIPE WHICH ALLOWS FOR PIPE DEFLECTION AT THE JOINTS.
REVISED 04/15/10

CITY OF LAS VEGAS FIRE DEPARTMENT NOTES

- 1. ALL WORK SHALL BE DONE IN STRICT ACCORDANCE WITH THE LAS VEGAS FIRE & RESCUE ADOPTED FIRE CODE ORDINANCE #6325 FOR HYDRANT SPECIFICATIONS AND HYDRANT INSTALLATION SPECIFICATIONS.
2. ONLY FIRE HYDRANTS THAT ARE ON THE LAS VEGAS VALLEY WATER DISTRICT'S - APPROVED PRODUCTS LIST ARE ALLOWED TO BE INSTALLED.
3. A PERMIT IS REQUIRED FROM LAS VEGAS FIRE & RESCUE FOR THE INSTALLATION OF ON-SITE WATER LINES AND FIRE HYDRANTS. THE PERMIT AND CONTRACTORS MATERIAL, TEST CERTIFICATE FOR UNDERGROUND PIPING FORM SHALL BE OBTAINED FROM THE FIRE PROTECTION ENGINEER BEFORE COMMENCEMENT OF WORK. [IFC § 105.7.12]
4. ON ANY RESIDENTIAL OR COMMERCIAL INSTALLATIONS, FIRE HYDRANTS SHALL BE INSTALLED AND FIRE APPARATUS ACCESS ROADS SHALL BE MAINTAINED BEFORE COMMENCEMENT OF ANY COMBUSTIBLE CONSTRUCTION. ALL FIRE HYDRANTS SHALL BE IN GOOD WORKING ORDER AND SHALL BE CAPABLE OF DELIVERING THE REQUIRED FIRE FLOW. [IFC § 5310, § 5312]
5. TO IDENTIFY THE FIRE HYDRANT LOCATIONS, THE CONTRACTOR SHALL PLACE A BLUE REFLECTIVE MARKER AT THE CENTER LINE OF STREET ADJACENT TO THE FIRE HYDRANTS. [IFC § 507.5.7.3]
6. ALL UNDERGROUND INSPECTIONS, PRESSURE AND FLUSH VERIFICATIONS OF ALL FIRE HYDRANTS AND FIRE LINES, SHALL BE CONDUCTED BEFORE COVERING THE LINES. CENTER LOADING IS ACCEPTABLE FOR THE HYDRO TESTS WITH PRIOR FIRE PREVENTION APPROVAL. [IFC § 106.3]
7. ALL ON-SITE UNDERGROUND WATER MAINS AND MATERIALS SHALL BE U.L. LISTED A.W.W.A. APPROVED AND SHALL BE RATED FOR THE APPROPRIATE WORKING PRESSURE. [IFC § 507.2.1, NFPA 24]
8. PAINTING OF CURBS, FIRE HYDRANTS, PADS, PROTECTION OF FIRE HYDRANTS FROM PHYSICAL DAMAGE, AND ALL OTHER WORK NECESSARY PER PLANS SHALL BE COMPLETED BEFORE APPROVAL BY LAS VEGAS FIRE AND RESCUE, FIRE PREVENTION DIVISION. [IFC § 507]
9. PRIVATE HYDRANTS SHALL BE PAINTED RED. [IFC § 507.5.7.1]
10. PRIOR TO THE FINAL OCCUPANCY, A FIRE FLOW TEST SHALL BE WITNESSED BY LAS VEGAS FIRE AND RESCUE, FIRE PREVENTION DIVISION TO VERIFY AVAILABILITY OF THE REQUIRED FIRE FLOW. [IFC § 507]
11. FIRE HYDRANT SPACING SHALL BE AS FOLLOWS: [IFC § C102]
RESIDENTIAL - 500 FEET UNSPRINKLERED; 600 FEET SPRINKLERED.
COMMERCIAL - 300 FEET UNSPRINKLERED; 400 FEET SPRINKLERED.
12. WHERE THE WATER MAINS ARE EXTENDED ALONG STREETS OR NEW STREETS ARE INSTALLED WHERE FIRE HYDRANTS ARE NOT NEEDED FOR PROTECTION OF STRUCTURES, FIRE HYDRANTS SHALL BE INSTALLED AT A MAXIMUM OF 1000 FT SPACING TO PROVIDE FOR TRANSPORTATION HAZARDS. WHERE STREETS ARE PROVIDED WITH MEDIAN DIVIDERS OR HAVE FOUR (4) OR MORE TRAFFIC LANES AND HAVE A TRAFFIC COUNT OF MORE THAN 30,000 PER DAY, HYDRANTS ARE REQUIRED ON EACH SIDE OF THE STREET SPACED AT 500 FT ON AN ALTERNATING BASIS. [IFC § C102.8]
13. NO FIRE HYDRANTS SHALL BE LOCATED WITHIN THE RADIUS OF A CUL-DE-SAC OR WITHIN 20 FT OF THE PERIMETER OF THE RADIUS OF THE CUL-DE-SAC.
14. NO FIRE HYDRANTS SHALL BE LOCATED WITHIN 6 FT OF ANY CURB RETURN, DRIVEWAY, POWER POLE, STREETLIGHT OR ANY OTHER OBSTRUCTION. [IFC § C102.12]
15. A MAXIMUM DISTANCE FROM A FIRE HYDRANT TO A ONE-TWO FAMILY DWELLING SHALL NOT EXCEED 300 FT, AS MEASURED BY AN APPROVED ROUTE. [IFC § C102.4]
16. THE MAXIMUM DISTANCE FROM A FIRE HYDRANT TO A FIRE DEPARTMENT CONNECTION (FDC) SHALL NOT EXCEED 100 FT, AS MEASURED BY AN APPROVED ROUTE. [IFC § C102.7]
17. THE MAXIMUM DISTANCE FROM A HYDRANT TO THE END OF A DEAD-END STREET SHALL NOT EXCEED 200 FT. [IFC § C102.6]
18. TWO (2) SOURCES OF SUPPLY ARE REQUIRED WHENEVER THERE IS 4 OR MORE FIRE HYDRANTS/SPRINKLER LEAD-INS ARE INSTALLED ON A SINGLE SYSTEM. SECTIONAL CONTROL VALVES SHALL BE INSTALLED SO THAT NO MORE THAN 2 FIRE HYDRANTS CAN BE OUT OF SERVICE DUE TO A BREAK IN A WATER MAIN. [IFC § C104]
19. ALL FIRE APPARATUS ACCESS ROADS SHALL BE PAVED TO PROVIDE ALL-WEATHER DRIVING CAPABILITIES, AND SHALL BE DESIGNED AND MAINTAINED TO SUPPORT THE IMPOSED LOADS OF THE FIRE APPARATUS. [IFC § 503.2.3]
20. THE GRADIENT FOR THE FIRE APPARATUS ROADS SHALL NOT EXCEED 12% ANGLES OF APPROACH AND ANGLES OF DEPARTURE SHALL NOT EXCEED 6% FOR 25 FT PRIOR TO OR AFTER THE GRADE CHANGE. ADJACENT TO THE STRUCTURES GRADIENT SHALL NOT EXCEED 6%. [IFC § 503.2.7, § 503.2.8]
21. THE TURNING RADIUS OF THE FIRE APPARATUS ACCESS ROADS SHALL BE NO LESS THAN 52 FT OUTSIDE AND 28 FT INSIDE TURNING RADIUS. [IFC § 503.2.4]
22. VERTICAL CLEARANCE OF ALL FIRE APPARATUS ACCESS ROADS SHALL NOT BE LESS THAN 13 FT 6 INS. [IFC § 503.2.1]
23. FIRE DEPARTMENT ACCESS ROADS SHALL HAVE A MINIMUM UNOBSTRUCTED WIDTH OF NOT LESS THAN 40 FT FLOW LINE TO FLOW LINE WITH PARALLEL PARKING PERMITTED ON BOTH SIDES, NOT LESS THAN 32 FT WIDE, FLOW-LINE TO FLOW-LINE, WHERE PARKING IS PERMITTED ONLY ON ONE SIDE OF THE FIRE APPARATUS ACCESS ROAD, NOT LESS THAN 24 FT WIDE, FLOW-LINE TO FLOW-LINE, WHERE NO PARKING IS PERMITTED ON EITHER SIDE. FIRE LANES THROUGH PARKING LOTS SHALL NOT BE LESS THAN 24 FT. [IFC § 503.2.1.1]
24. FIRE APPARATUS ACCESS ROAD SHALL BE REQUIRED WHEN ANY PORTION OF AN EXTERIOR WALL OF THE FIRST STORY IS LOCATED MORE THAN 150 FT FROM A FIRE DEPARTMENT VEHICLE ACCESS. THIS DISTANCE COULD BE INCREASED TO 250 FT IF THE BUILDING IS SPRINKLERED. [IFC § 503.1.1]
25. APPROVED SECONDARY FIRE APPARATUS ACCESS SHALL BE PROVIDED FOR 100 OR MORE DWELLING UNITS, ROAD(S) WITH DEAD-ENDS OR WITH A SINGLE POINT OF ACCESS IN EXCESS OF 600 FT COMMERCIAL AND INDUSTRIAL DEVELOPMENTS WHERE BUILDINGS EXCEED 2 STORES OR 30 FT IN HEIGHT, OR EXCEEDING 62,000 SQ FT IN AREA. [IFC § 503.1.2]
26. ALL DEAD-END FIRE APPARATUS ROADS AND/OR FIRE LANES, PUBLIC OR PRIVATE, IN EXCESS OF 150 FT IN LENGTH SHALL BE PROVIDED WITH AN APPROVED TURN AROUND HAVING A MINIMUM DIAMETER OF 81 FT. [IFC § 503.2.5]
27. ALL FIRE APPARATUS ACCESS ROADS SHALL BE MARKED BY PLACING APPROVED SIGNS AT THE START OF THE DESIGNATED FIRE LANE, ONE SIGN AT THE END OF THE FIRE LANE AND WITH SIGNS AT INTERVALS OF 100 FT ALONG THE DESIGNATED FIRE LANES. SIGNS TO BE PLACED ON BOTH SIDES OF AN ACCESS ROADWAY IF NEEDED TO PREVENT PARKING ON EITHER SIDE. SIGNS TO BE INSTALLED NO HIGHER THAN 10FT OR LESS THAN 6 FT FROM THE ROADWAY LEVEL. THE CURB ALONG OR ON THE PAVEMENT OR CEMENT (IF NO CURB IS PROVIDED) SHALL BE PAINTED WITH RED WEATHER RESISTANT PAINT IN ADDITION TO THE SIGNS. [IFC § 503.3]
28. ELECTRONICALLY CONTROLLED ACCESS GATES SHALL BE PROVIDED WITH AN APPROVED EMERGENCY VEHICLE DETECTOR/RECEIVER SYSTEM. SAID SYSTEM SHALL BE INSTALLED IN ACCORDANCE WITH THE IFC § 503.6 AND IFC APPENDIX M.
EFFECTIVE DATE 03-01-2016

EFFECTIVE DATE 03-01-2016

CITY OF LAS VEGAS GENERAL NOTES

- 1. ALL CONSTRUCTION AND MATERIALS SHALL BE IN ACCORDANCE WITH THE UNIFORM STANDARD SPECIFICATIONS FOR PUBLIC WORKS CONSTRUCTION OFF-SITE IMPROVEMENTS, CLARK COUNTY AREA NEVADA, LATEST ISSUE; THE UNIFORM STANDARD DRAWINGS FOR PUBLIC WORKS CONSTRUCTION, CLARK COUNTY AREA NEVADA, LATEST REVISION; THE "SUMMERLIN IMPROVEMENT STANDARDS" FOR WORK IN THE SUMMERLIN AREA; AND OTHER APPLICABLE APPROVED STANDARDS ISSUED BY THE CONTROLLING AGENCY, THE UNIFORM BUILDING CODE; AND ALL LOCAL CITY CODES AND ORDINANCES APPLICABLE, EXCEPT AS NOTED ON THIS SHEET AS "DEVIATIONS FROM STANDARDS".
2. THE EXISTENCE AND LOCATION OF ANY OVERHEAD OR UNDERGROUND UTILITY LINES, PIPES, OR STRUCTURES SHOWN ON THESE PLANS ARE OBTAINED BY A RESEARCH OF THE AVAILABLE RECORDS. EXISTING UTILITIES AS SHOWN FROM CLV PLANS LIBRARY ARE APPROXIMATE AND FOR RECORD PURPOSES. EXISTING UTILITIES ARE LOCATED ON PLANS ONLY FOR THE CONVENIENCE OF THE CONTRACTOR. EXISTING UTILITY SERVICE LATERALS MAY NOT BE SHOWN ON THE PLANS. THE CONTRACTOR SHALL, AT HIS OWN EXPENSE, LOCATE ALL UNDERGROUND AND OVERHEAD INTERFERENCES WHICH MAY AFFECT HIS OPERATION DURING CONSTRUCTION AND SHALL TAKE ALL NECESSARY PRECAUTIONS TO AVOID DAMAGE TO SAME. THE CONTRACTOR SHALL USE EXTREME CAUTION WHEN WORKING NEAR OVERHEAD UTILITIES SO AS TO SAFELY PROTECT ALL PERSONNEL AND EQUIPMENT, AND SHALL BE RESPONSIBLE FOR ALL COST AND LIABILITY IN CONNECTION THEREWITH.
3. THE CONTRACTOR SHALL TAKE ALL PRECAUTIONARY MEASURES NECESSARY TO PROTECT EXISTING UTILITY LINES, STRUCTURES AND STREET IMPROVEMENTS WHICH ARE TO REMAIN IN PLACE, FROM DAMAGE, AND ALL SUCH IMPROVEMENTS OR STRUCTURES DAMAGED BY THE CONTRACTOR'S OPERATIONS SHALL BE REPAIRED OR REPLACED SATISFACTORY TO THE CITY ENGINEER AND OWNING UTILITY COMPANY AT THE EXPENSE OF THE CONTRACTOR.
4. ALL CONSTRUCTION SHALL BE AS SHOWN ON THESE PLANS, ANY REVISIONS SHALL HAVE THE PRIOR WRITTEN APPROVAL OF THE CITY ENGINEER.
5. TYPE V CEMENT SHALL BE USED IN ALL OFF-SITE CONCRETE WORK. CONCRETE TO BE 3000 P.S.I. MINIMUM @ 28 DAYS. MIX DESIGNS TO BE APPROVED BY THE CITY, PRIOR TO THE USE ON THE PROJECT.
6. PERMITS ARE REQUIRED FOR ANY WORK IN THE PUBLIC RIGHT-OF-WAY. THE CONTRACTOR SHALL SECURE ALL PERMITS AND INSPECTIONS REQUIRED FOR THIS CONSTRUCTION.
7. EXPANSION JOINTS REQUIRED, MAXIMUM EVERY 300' IN EXTRUDED-TYPE CURB.
8. AC PAVEMENT TO BE ONE-HALF INCH (1/2) ABOVE LIP OF ALL GUTTERS AFTER COMPACTION, EXCEPT AT SIDEWALK RAMPS AND CROSS GUTTERS.
9. CURB AND GUTTER FLOW TO BE UNACCEPTABLE TO THE CITY OF LAS VEGAS SHALL BE REMOVED AND REPLACED PER STANDARD DRAWING 216.
10. SIDEWALK RAMPS SHALL BE CONSTRUCTED IN EACH QUADRANT OF AN INTERSECTION PER STANDARD DRAWING 235. EXACT LOCATION OF RAMPS MAY BE ADJUSTED IN THE FIELD BY A CITY INSPECTOR.
11. CONTRACTOR SHALL PROVIDE ALL NECESSARY HORIZONTAL AND VERTICAL TRANSITIONS BETWEEN NEW CONSTRUCTION AND EXISTING SURFACES TO PROVIDE FOR PROPER DRAINAGE AND FOR INGRESS AND EGRESS TO NEW CONSTRUCTION. THE EXTENT OF THE TRANSITIONS TO BE AS SHOWN ON PLANS.
12. ALL GRADING WORK SHALL CONFORM TO THE SOILS REPORT AS PREPARED BY THE (COMPANY , REPORT #, DATE) APPROVED BY THE CITY ENGINEER, AND AS SHOWN ON THESE PLANS.
13. EXACT LOCATION OF ALL SAWCUT LINES MAY BE ADJUSTED OR DETERMINED IN THE FIELD BY A CITY OF LAS VEGAS ENGINEER IF LOCATION ON PLANS IS NOT CLEARLY SHOWN, OR EXISTING PAVEMENT CONDITION REQUIRES RELOCATIONS.
14. THE CONTRACTOR SHALL TAKE ALL PRECAUTIONS NECESSARY TO PROTECT EXISTING PERMANENT SURVEY MONUMENTS. ANY MONUMENTS DISTURBED SHALL BE REPLACED AND ADJUSTED PER AVAILABLE RECORDS IN ACCORDANCE WITH N.R.S. STATUTE NO. 625.380 & CITY OF LAS VEGAS TITLE 18, APPENDIX D.
15. UTILITY COMPANY METER BOXES, MANHOLE LIDS, VALVE COVERS, ETC., SHALL BE LOCATED OUT OF DRIVEWAYS, DRIVEWAY APRONS, FLOWLINES, AND CROSS GUTTERS UNLESS WRITTEN APPROVAL IS GRANTED BY THE UTILITY COMPANY AND THE CITY ENGINEER.
WALL NOTES:
16. ALL WALLS, NEW OR EXISTING, ARE ONLY SHOWN ON CIVIL PLANS FOR THE PURPOSE OF REVIEWING GRADING RELATIONSHIPS, FLOOD CONTROL AND SIGHT DISTANCE AT INTERSECTIONS. NEW WALLS REQUIRE A SEPARATE PERMIT AND INSPECTION BY THE BUILDING DEPARTMENT.
17. ASPHALT MIX DESIGN MUST BE SUBMITTED AND APPROVED BY THE CITY ENGINEER PRIOR TO THE PLACEMENT OF ASPHALT WITHIN CITY RIGHT OF WAY.
18. CONTRACTOR SHALL ADJUST ALL NEW AND EXISTING INLETS, VALVE BOXES, MANHOLE RIMS, AND SEWER CLEAN OUTS, ETC. TO FINISH GRADE AS APPLICABLE WHETHER OR NOT THEY ARE SHOWN ON THE PLANS.
19. MATERIALS, HANDLING AND PLACEMENT OF PORTLAND CEMENT CONCRETE SHALL BE IN ACCORDANCE WITH APPLICABLE SECTIONS OF NDOT OR THE CLARK COUNTY AREA SPECIFICATIONS (AS APPLICABLE) AND THE PLANS AND DETAILS SHOWN HEREON.
20. WHEN INSTALLING UNDERGROUND FACILITIES THAT REQUIRE UNDERGROUND LOCATING DEVICES SUCH AS MARKER BALLS, LOCATING RIBBON, ETC., THE CONTRACTOR SHALL PROVIDE WRITTEN DOCUMENTATION TO OFFSITE INSPECTION AND TESTING CERTIFYING THAT ALL DEVICES HAVE BEEN PLACED AND VERIFIED TO BE IN GOOD WORKING CONDITION PRIOR TO THE CONSTRUCTION OF ANY ROAD BASE.
21. SANITARY SEWER AND STORM DRAIN FINAL LOCATION MAP(S) SHALL BE PROVIDED TO THE CITY AND APPROVED PRIOR TO ACCEPTANCE OF FACILITY VIDEO INSPECTION. THE MAP(S) SHALL INCLUDE MANHOLES AND TRANSITION STRUCTURE STORM DRAIN LATERALS AT THE CONNECTION TO THE STORM DRAIN MAIN AND AT THE CONNECTION TO A DROP INLET. THE CONNECTION OF SEWER SERVICE RIGHT-OF-WAY, AND STORM DRAIN MAIN ALIGNMENT INCLUDING DEFLECTION POINTS, THE LOCATION VERTICAL CONTROL NETWORKS OF THE CITY OF LAS VEGAS. FINAL LOCATION MAPS MUST BE SEALED AND CERTIFIED BY A NEVADA PROFESSIONAL LAND SURVEYOR TO HAVE POSITIONAL CERTANTIES OF +/- 0.09 METERS (+/- 0.3 FEET) HORIZONTALLY AND VERTICALLY. A SEPARATE ELECTRONIC COMMA DELIMITED FILE FOR THE SANITARY SEWER AND STORM DRAIN COORDINATES SHALL ALSO ACCOMPANY THE SANITARY SEWER AND STORM DRAIN FINAL LOCATION MAP(S).
22. CCTV VIDEO INSPECTION IS REQUIRED FOR ALL SEWER AND STORM DRAINS. THE CCTV VIDEO INSPECTIONS NEED TO BE PERFORMED PER THE DESIGN AND CONSTRUCTION STANDARDS FOR WASTEWATER COLLECTION SYSTEMS LATEST EDITION.
23. A SEPARATE BORING PERMIT IS REQUIRED FOR ALL BORING ACTIVITIES.
REVISED 02/03/15

DEVIATIONS FROM STANDARDS

NONE.

CITY OF LAS VEGAS TRAFFIC NOTES

- 1. ALL CONSTRUCTION SIGNING, BARRICADEING, AND TRAFFIC DELINEATION SHALL CONFORM TO THE "MANUAL ON UNIFORM TRAFFIC CONTROL DEVICES", LATEST EDITION.
2. THE STREET SIGN CONTRACTOR SHALL OBTAIN STREET NAMES AND BLOCK NUMBERING FROM THE PLANNING DEPARTMENT PRIOR TO CONSTRUCTION.
3. BEFORE ANY WORK IS STARTED IN THE RIGHT-OF-WAY, THE CONTRACTOR SHALL INSTALL ALL ADVANCE WARNING SIGNS FOR CONSTRUCTION ZONE. THE CONTRACTOR SHALL INSTALL TEMPORARY STOP SIGNS AT ALL NEW STREET ENCROACHMENTS INTO EXISTING CITY STREETS WHERE WARRANTED IMMEDIATELY AFTER FIRST GRADING WORK IS ACCOMPLISHED, AND SHALL MAINTAIN SAID SIGNS UNTIL PERMANENT SIGNS ARE INSTALLED.
4. WHEN A DESIGNATED "SAFE ROUTE TO SCHOOL" IS ENCLOSED UPON BY A CONSTRUCTION WORK ZONE AND PUBLIC WORKS STAFF IDENTIFY A NEED FOR WORKERS TO BE ASSISTED IN THE SAFE CROSSING THROUGH THAT WORK ZONE, THE CONTRACTOR SHALL BE REQUIRED TO PROVIDE A QUALIFIED "CROSSING GUARD". THE GUARD SHALL BE PRESENT FOR THE FULL DURATION OF TIME THAT CHILDREN ARE LIKELY TO BE PRESENT.
5. IF THE IMPROVEMENTS NECESSITATE THE OBLITERATION, TEMPORARY OBSTRUCTION, TEMPORARY REMOVAL OR RELOCATION OF ANY EXISTING TRAFFIC PAVEMENT MARKING, SUCH PAVEMENT MARKING SHALL BE RESTORED OR REPLACED WITH LIKE MATERIALS TO THE SATISFACTION OF THE CITY TRAFFIC ENGINEER.
6. THE CONTRACTOR SHALL BE RESPONSIBLE FOR PROVIDING AND INSTALLING ALL PERMANENT SIGNS SHOWN ON THE PLANS. ALL NEW TRAFFIC SIGNS SHALL BE FABRICATED WITH DIAMOND GRADE WIP CLASS 6 REFLECTIVE SHEETING OR APPROVED EQUAL. ALL NEW TRAFFIC SIGNS, EXCEPT STREETNAME AND SCHOOL SPEED LIMIT SIGNS, SHALL HAVE 3M SERIES 1160 OR APPROVED EQUIVALENT ANTI-GRAFFITI PROTECTIVE OVERLAY FILM; SCHOOL ZONE SIGNS SHALL HAVE 3M SERIES 1150 ANTI-GRAFFITI PROTECTIVE OVERLAY FILM. STREET NAME SIGNS SHALL CONFORM IN THEIR ENTIRETY TO CURRENT CITY STANDARDS. ALL OTHER SIGNS SHALL BE STANDARD SIZE UNLESS OTHERWISE SPECIFIED ON THE PLANS. ALL SIGN POSTS SHALL BE INSTALLED IN ACCORDANCE WITH THE CURRENT CITY STANDARDS.
7. WHEN A PROPOSED STREET LIGHT STANDARD IS LOCATED WITHIN FIVE (5) FEET OF ANY PROPOSED SIGN SHOWN ON THESE PLANS, THE SIGN SHALL BE MOUNTED ON A SIGNPOST. THE SIGN SHALL BE MOUNTED ON THE STREET LIGHT STANDARD AND THE SIGNPOST SHALL BE ELIMINATED.
8. ALL PERMANENT TRAFFIC CONTROL DEVICES CALLED FOR HEREON SHALL BE IN PLACE AND IN FINAL POSITION PRIOR TO ALLOWING ANY PUBLIC TRAFFIC ONTO THE PORTIONS OF THE ROAD(S) BEING IMPROVED HERE UNDER, REGARDLESS OF THE STATUS OF COMPLETION OF PAVING OR OTHER OFF-SITE IMPROVEMENTS CALLED FOR BY THESE PLANS.
9. STREET SIGNS AND STOP SIGNS SHALL BE INSTALLED PER CITY STANDARD SPECIFICATIONS FOR PLACEMENT OF STREET NAME SIGNS.
10. THE CONTRACTOR SHALL PROVIDE ALL NECESSARY TRAFFIC CONTROL DEVICES AND FLAGGERS TO INSURE THE SAFETY OF THE PUBLIC IN OR AROUND THE WORK AREA. THE CONTRACTOR SHALL HAVE A CERTIFIED ATSSA TRAFFIC CONTROL TECHNICIAN OR ISEA WORK ZONE SAFETY SPECIALIST SET UP, MAINTAIN AND/OR REMOVE ALL TRAFFIC CONTROL DEVICES IN THE CITY OF LAS VEGAS RIGHT OF WAY.
11. WORK IN PUBLIC STREETS, ONCE BEGUN, SHALL BE EXPEDITED TO COMPLETION SO AS TO PROVIDE MINIMUM INCONVENIENCE TO ADJACENT PROPERTY OWNERS AND TO THE TRAVELING PUBLIC.
12. THE CONTRACTOR SHALL BE RESPONSIBLE FOR NOTIFYING CITIZENS AREA TRANSIT (C.A.T.) IF THE CONSTRUCTION INTERRUPTS OR RELOCATES A BUS STOP OR HAS AN ADVERSE EFFECT ON BUS SERVICE ON THAT STREET TO ARRANGE FOR TEMPORARY RELOCATION OF STOP.
13. GUARDS SHALL BE OBTAINED BY CONTACTING THE METROPOLITAN POLICE DEPARTMENT SPECIAL EVENTS UNIT (PHONE # 828-3442) WHO WILL PROVIDE OFFICERS PROPERLY TRAINED IN TRAFFIC CONTROL FOR THE USE OF THESE OFFICERS SHALL BE SET BY METRO AND WILL BE PAID BY THE CONTRACTOR. THE CONTRACTOR IS RESPONSIBLE FOR ALL ARRANGEMENTS WITH METRO.
14. ANY WORK WITHIN 300' OF A SIGNALIZED INTERSECTION WILL BE NIGHT WORK, UNLESS OTHERWISE DIRECTED BY THE CITY OF LAS VEGAS TRAFFIC ENGINEER.
15. THE CONTRACTOR SHALL CONTACT THE TRAFFIC ENGINEERING DIVISION (TRANSPORTATION SECTION) THROUGHOUT THE PROJECT TO INITIATING PAVEMENT TO RECEIVE DIRECTION FOR ANY PERMANENT OR TEMPORARY MODIFICATIONS TO THE APPROVED DRAWINGS REGARDING FINAL PAVEMENT TRANSITIONS, MARKINGS AND SIGNING THAT ARE REQUIRED TO MATCH ADJACENT ROADWAY SEGMENTS. THE CONTRACTOR SHALL PROVIDE A DRAWING FOR APPROVAL BY THE TRAFFIC ENGINEERING DIVISION DEPICTING ANY ADJUSTMENTS TO THE FINAL PAVEMENT MARKINGS AND SIGNAGE, WHICH MAY INCLUDE OMITTING, ADDING OR MODIFYING PAVEMENT MARKINGS AND TRAFFIC CONTROL SIGNS SUCH THAT ADJUSTING TRANSITIONS AND LANE TERMINATIONS BETWEEN ADJACENT ROADWAY SEGMENTS ARE CONSTRUCTED.
REVISED 04/15/10

LAS VEGAS VALLEY WATER DISTRICT NOTES

LVVWD PROJECT # 125112

- 1. NO WORK SHALL BEGIN UNTIL THE WATER PLANS HAVE BEEN APPROVED FOR CONSTRUCTION BY THE LVVWD INSPECTION DIVISION. NOTICE SHALL BE GIVEN TO THE LVVWD COMMUNICATION SUPPORT CENTER (258-7171) TWO (2) WORKING DAYS PRIOR TO THE START OF CONSTRUCTION. FOR FUTURE INSPECTIONS, NOTICE MUST BE GIVEN BY 2:00 P.M. THE BUSINESS DAY PRIOR TO THE REQUESTED LVVWD INSPECTION. WHEN REQUESTING INSPECTIONS, PLEASE REFER TO THE PROJECT # IDENTIFIED ABOVE.
2. ALL WORK SHALL CONFORM TO LVVWD STANDARD PLANS, DRAWINGS, AND SPECIFICATIONS, AND TO THE UNIFORM DESIGN AND CONSTRUCTION STANDARDS FOR POTABLE WATER SYSTEMS (UDACS). THE LATEST EDITION OF UDACS SHALL SUPERSEDE ANY CONFLICTS CONTAINED IN THE APPROVED DRAWINGS AND/OR SPECIFICATIONS.
3. ALL WORK, EXCEPT AS MODIFIED BY THESE PLANS OR BY NOTE 2 ABOVE, SHALL BE DONE IN ACCORDANCE WITH THE MOST RECENT DRAFT OR EDITION OF THE UNIFORM STANDARD SPECIFICATIONS FOR PUBLIC WORKS CONSTRUCTION OFFSITE IMPROVEMENT, CLARK COUNTY AREA.
4. A SINGLE PIPE MATERIAL SHALL BE USED THROUGHOUT THE PROJECT UNLESS OTHERWISE APPROVED BY THE LVVWD.
5. ALL SERVICE LATERALS TWO (2) INCHES IN DIAMETER AND SMALLER SHALL BE TYPE K COPPER TUBING WITH LVVWD APPROVED SERVICE SADDLES.
6. ALL WATER METER BOXES SHALL BE LOCATED OUTSIDE OF DRIVEWAY AREAS.
7. ALL VALVES SHALL BE LOCATED OUTSIDE OF DRIVEWAYS, VALLEY AND CURB GUTTERS.
8. ALL WATER AND STORM DRAIN OR SANITARY SEWER CROSSINGS SHALL CONFORM TO SECTION 2.22 OF THE 2010 EDITION OF THE UDACS.
9. ALL WATER FACILITIES SHALL BE FILLED, DISINFECTED, PRESSURE TESTED, FLUSHED, FILLED, AND AN ACCEPTABLE WATER SAMPLE OBTAINED, PRIOR TO CONNECTION TO THE LVVWD DISTRIBUTION SYSTEM.
10. THE CONTRACTOR MUST OBTAIN ALL METERS TWO (2) INCHES AND SMALLER FROM LVVWD CENTRAL STORES. TELEPHONE 258-3152 OR 258-3802, TWO (2) WORKING DAYS PRIOR TO METER PICKUP.
11. ANY INTERRUPTION OF SERVICE MUST BE PERFORMED IN ACCORDANCE WITH UDACS SECTION 3.14.01, AND APPROVED BY THE LVVWD INSPECTION DIVISION PRIOR TO SHUTDOWN. PROPER WRITTEN NOTIFICATION MUST BE GIVEN TO ALL AFFECTED CUSTOMERS.
12. ALL WATER FACILITY CONSTRUCTION MATERIALS USED MUST BE AS LISTED ON THE LVVWD PRE-APPROVED MATERIALS AND MANUFACTURER'S LISTING FOR NEW FACILITIES, LATEST REVISION, OR SPECIFICALLY APPROVED ON THESE PLANS.
13. TELEPHONE CALL BEFORE YOU DIG AT "811" OR 1-800-227-2600.
14. THE INSTALLATION OF LAS VEGAS VALLEY WATER DISTRICT (LVVWD) MUNICIPAL WATER FACILITIES WITHIN ALL STREETS IS ASSUMED TO BE IN COMPLIANCE WITH THE UNIFORM STANDARDS, INCLUDING THE PLACEMENT OF ASPHALT PAVING STREET SURFACES. ANY REPAIR WORK DONE BY THE LVVWD TO THE MUNICIPAL WATER FACILITIES WILL INCLUDE THE PLACEMENT OF APPROPRIATELY SIZED ASPHALT REPAIR PATCH ON THE STREET SURFACE.
ANY DECORATIVE PAVING SURFACE WITHIN THE STREET IS THE RESPONSIBILITY OF THE OWNER'S ASSOCIATION, OR THE INDIVIDUAL PROPERTY OWNER. IF NO OWNER'S ASSOCIATION IS IN EXISTENCE, OR THE AGENCY HAVING JURISDICTION, DECORATIVE SURFACE MATERIALS PLACED WITHIN THE TEN FOOT EASEMENT ABUTTING A PUBLIC OR PRIVATE STREET, IF DISTURBED BY THE LVVWD DURING THE REPAIR OR OPERATION OF ITS FACILITIES, WILL BE REPLACED BY LVVWD WITH AN APPROPRIATELY SIZED PLAIN FINISH CONCRETE PATCH. THE LVVWD WILL NOT RESTORE, AND WILL NOT BE RESPONSIBLE FOR THE RESTORATION OF, ANY DECORATIVE PAVING SURFACE WITHIN THE STREET. THE LVVWD WILL NOT ATTEMPT TO MATCH COLOR OR FINISH OF ANY ADJACENT MATERIALS.
15. NO LEAD COMPLIANCE NOTE: TO COMPLY WITH THE FEDERAL SAFE DRINKING WATER ACT, ALL WATER WORKS BRASS PRODUCTS PROPOSED TO BE RELOCATED, OR INSTALLED AS NEW MUST BE INSTALLED WITH THE LEAD FREE APPROVED PRODUCT. THE OLD LEADED PRODUCT MAY NOT BE REUSED.
APPROVED FOR CONSTRUCTION
Y. D. SHARI, P.E.
LAS VEGAS VALLEY WATER DISTRICT ENGINEERING SERVICES MANAGER
PROJECT No. 125112 DATE: 5/15/17

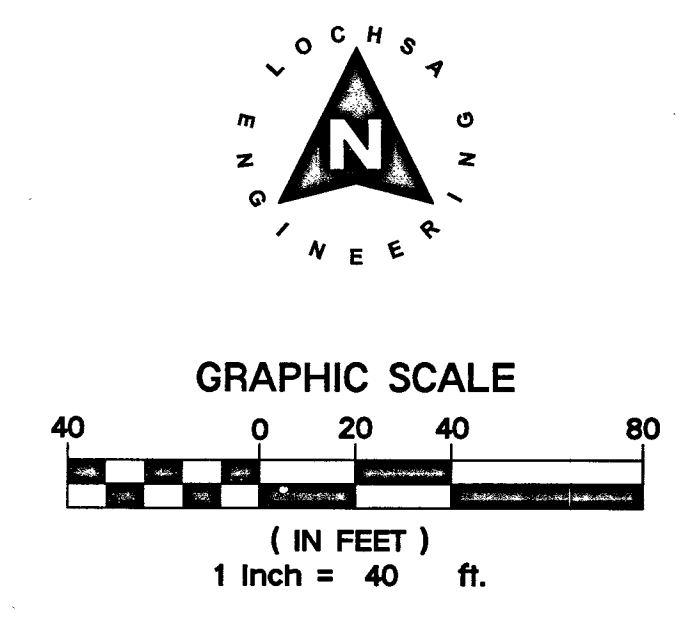
QUANTITIES

Table with 3 columns: DESCRIPTION, PUBLIC QUANTITY, PRIVATE QUANTITY. Includes items like 2-INCH ASPHALTIC CONCRETE PAVING, 3-INCH ASPHALTIC CONCRETE PAVING, OPEN GRADE, RIP-RAP (50=3'), TYPE I GRAVEL, TYPE II GRAVEL, EXCAVATION & EMBANKMENTS, CURB & GUTTER "L" CURB, CURB & GUTTER "ROLL" CURB, CONCRETE VALLEY GUTTER, 4-INCH CONCRETE SIDEWALK, 8-INCH SEWER (PRIVATE), 12-INCH SEWER (PRIVATE), 15-INCH SEWER (PRIVATE), 18-INCH SEWER (PRIVATE), 24-INCH SEWER (PRIVATE), 48-INCH SEWER MANHOLES (PRIVATE), 60-INCH SEWER MANHOLES (PRIVATE), SEWER MANHOLE ADJUSTMENTS, 16" NYLOPLAST DRAIN BASIN AND GRATE, 4-INCH PVC STORM DRAIN (PRIVATE), 4-INCH HDPE STORM DRAIN (PRIVATE), 6-INCH HDPE STORM DRAIN (PRIVATE), 6-INCH WATER MAIN, 8-INCH WATER MAIN, 10-INCH WATER MAIN, 12-INCH WATER MAIN, WATER MAIN (1-INCH DIAMETER), FIRE HYDRANT ASSEMBLY, FIRE HYDRANT RELOCATION, 8" WATER METER, 10" RPPA, 12" X 12" TEE, 12" X 10" TEE, 12" X 6" TEE, 8" X 8" TEE, 12" GATE VALVE, 10" GATE VALVE, 8" GATE VALVE, 12" 90° BEND, 12" 45° BEND, 12" 90° BEND, 8" 90° BEND, 8" 45° BEND, 8" 22.5° BEND, 8" 11.25° BEND, 6" 90° BEND, 12" X 8" REDUCER, 12" X 10" REDUCER, 10" X 8" REDUCER, 8" X 6" REDUCER, 2" MANUAL BLOWOFF ASSEMBLY, POWER SERVICE TO LOTS, SIDEWALK UNDERDRAIN, TRAFFIC SIGNAL AND/OR BASE, TRAFFIC SIGNAL UNDERGROUND, TRAFFIC CONTROL DEVICES, SURVEY MONUMENTS.

THE QUANTITY ESTIMATE SHOWN HERE IS FOR EXAMPLE ONLY. ALL DRAFTERS NEED TO CHECK WITH THEIR PROJECT MANAGERS BEFORE USING THIS QUANTITY ESTIMATE. SOME PROJECT MANAGERS MAY LIKE IT AND SOME MAY NOT. IT IS NOT REQUIRED IN CLARK COUNTY TO SHOW A QUANTITY ESTIMATE ON THE NOTE SHEET. IT IS MANDATORY, HOWEVER, TO SHOW A QUANTITY ESTIMATE ON THE NOTE SHEET IN CITY OF LAS VEGAS JURISDICTION. IF AND ONLY IF YOUR PROJECT ENGINEER WANTS THE QUANTITY ESTIMATE TO SHOW, THEN CHANGE IT TO THE APPROPRIATE LAYERS ALREADY DEFINED IN THIS DRAWING.

LEGEND table with columns: CL OR SURVEY LINE, EASEMENT LINE, DESCRIPTION, CONTOUR LINES, EDGE OF PAVEMENT, "A" TYPE CURBS, "L" TYPE CURBS, WALLS, FENCES, AC PAVEMENT, CONCRETE, SPOT ELEVATION, SIGNS, MANHOLE W/ DESCRIPTION, MANHOLE DESCRIPTIONS, FIRE HYDRANTS, GATE VALVES, REDUCERS, CLEAN OUTS, UTILITY BOX OR VAULT, BACKWATER VALVES, 100W HPS STREETLIGHTS, 150W HPS STREETLIGHTS, 200W HPS STREETLIGHTS, 250W HPS STREETLIGHTS.

GENERAL NOTE SHEET, PROJECT No.: 161124, DATE: 03/06/2017, SCALE: N/A, DRAWN BY: SAP, DESIGNED BY: SAP, CHECKED BY: MM, PROJECT No.: 161124, DATE: 03/06/2017, SCALE: N/A, DRAWN BY: SAP, DESIGNED BY: SAP, CHECKED BY: MM, SHEET No. C1.02, SHEET 2 OF 8, 1076860, PROJECT No.: 125112, Q3:125-28-NW



APPROVED FOR CONSTRUCTION
 LAS VEGAS VALLEY-WATER DISTRICT ENGINEERING SERVICES MANAGER
 DATE: 5/13/17 PROJECT No. 125112
 LVVWD APPROVED FIRE FLOW = 1,750 GPM AT 20 PSI
 RESIDUAL

NOTE:
 LOCHSA ENGINEERING ASSUMES NO RESPONSIBILITY FOR EXISTING UTILITY LOCATIONS AND ELEVATIONS. THE UTILITIES SHOWN ON THIS PLAN ARE FROM THE BEST AVAILABLE INFORMATION. IT IS THE CONTRACTOR'S RESPONSIBILITY TO FIELD VERIFY THE LOCATION AND ELEVATION OF ALL UTILITIES, INCLUDING BUT NOT LIMITED TO, THE WATER, FIRE, SANITARY SEWER, STORM SEWER, TELEPHONE, POWER, GAS, AND IRRIGATION LINES PRIOR TO THE COMMENCEMENT OF CONSTRUCTION. IF CONFLICT EXISTS IN THE FIELD, THE CONTRACTOR IS TO NOTIFY THE PROJECT ARCHITECT, OWNER'S REPRESENTATIVE AND THE PROJECT ENGINEER IMMEDIATELY.

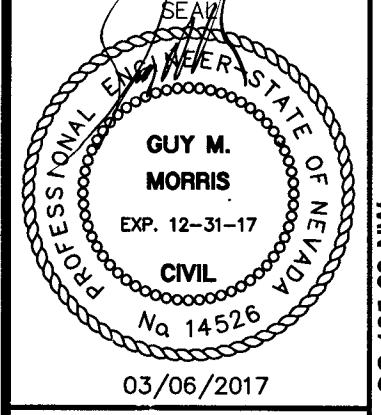
A.P.N.:
 125-29-101-003
BASIS OF BEARINGS:
 BASIS OF BEARINGS FOR THIS SURVEY IS THE NORTH LINE OF THE NORTHWEST QUARTER (NW 1/4) OF SECTION 29, TOWNSHIP 19 SOUTH, RANGE 60 EAST, M.D.M., AS SHOWN ON FILE WITH THE CLARK COUNTY RECORDER'S OFFICE IN FILE 107, PAGE 31 OF SURVEYS. SAID LINE BEARS: S89°30'32"E
BENCHMARK:
 BENCHMARK NO. 60 - BLV9029NNW6 FOUND CITY OF LAS VEGAS PIN AND ROUND PLATE IN CONCRETE WALL FOOTING, SOUTHEAST CORNER OF CENTENNIAL PKWY. AND CAMPBELL RD. E ELEVATION = 2578.16 FEET / 785.825 METERS (N AVD 88 DATUM)

Call before you Dig
 Avoid cutting underground utility lines. It's costly.

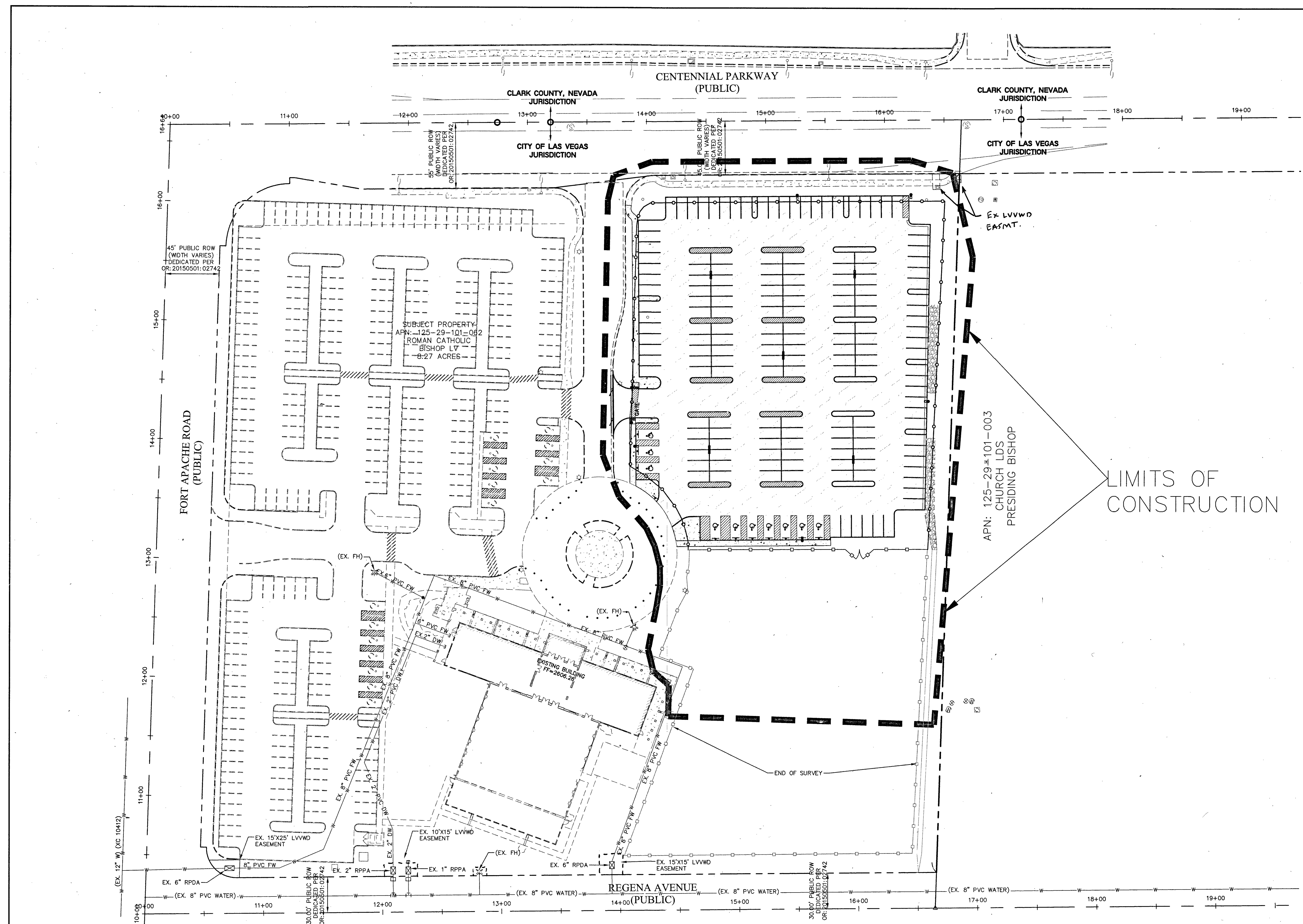
FAST
 Call before you Dig
 Avoid hitting overhead power lines. It's costly.

CALL 811
 1-800-227-2600

CALL BEFORE YOU DIG
 1-702-432-5300
 1-702-227-2929



C1.03
 SHEET 3 of 8
 107V 6860



CL OR SURVEY LINE	PROPERTY LINE	ROW LINE	EASEMENT LINE	SAWCUT LINE	SCARP LINE	DESCRIPTION:	CONTOUR LINES	EDGE OF PAVEMENT	"A" TYPE CURBS	"L" TYPE CURBS	WALLS	FENCES	AC PAVEMENT	CONCRETE	SPOT ELEVATIONS	SIGNS	MANHOLE W/ DESCRIPTION	MANHOLE DESCRIPTIONS	FIRE HYDRANTS	GATE VALVES	REDUCERS	CLEAN OUTS	UTILITY BOX OR VAULT	BACKWATER VALVES	100w HPS STREETLIGHTS	150w HPS STREETLIGHTS	200w HPS STREETLIGHTS	250w HPS STREETLIGHTS
---	---	---	---	---	---	EXISTING:	(-2210)	---	---	---	---	---	---	---	(12.34)	---	---	---	---	---	---	---	---	---	---	---	---	---
---	---	---	---	---	---	PROPOSED:	(-2122)	---	---	---	---	---	---	---	(12.34)	---	---	---	---	---	---	---	---	---	---	---	---	---

NO.	DATE	BY	DESCRIPTION

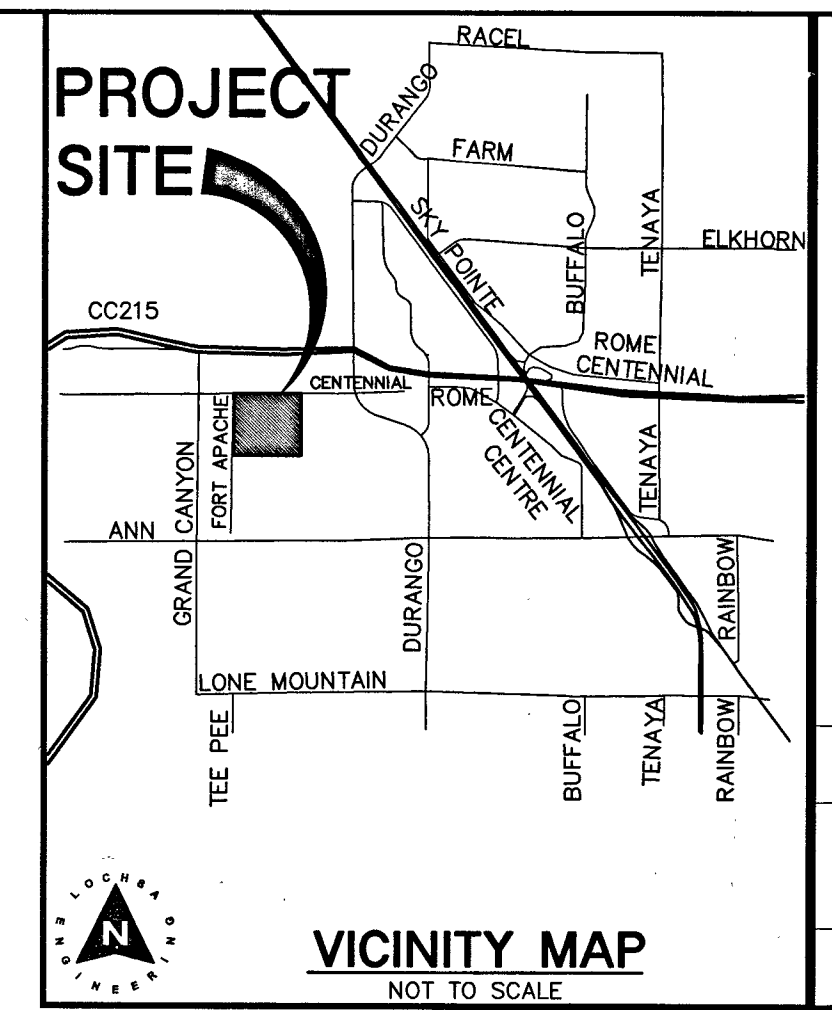
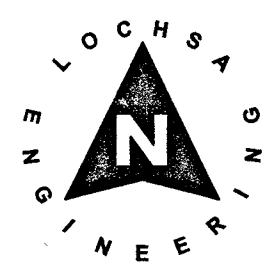
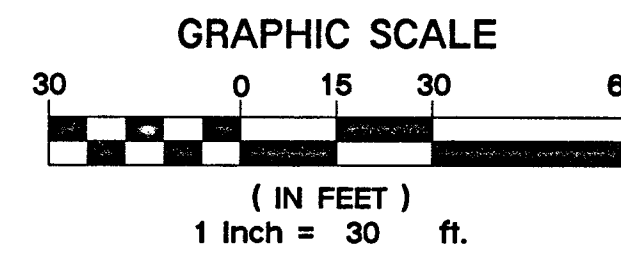
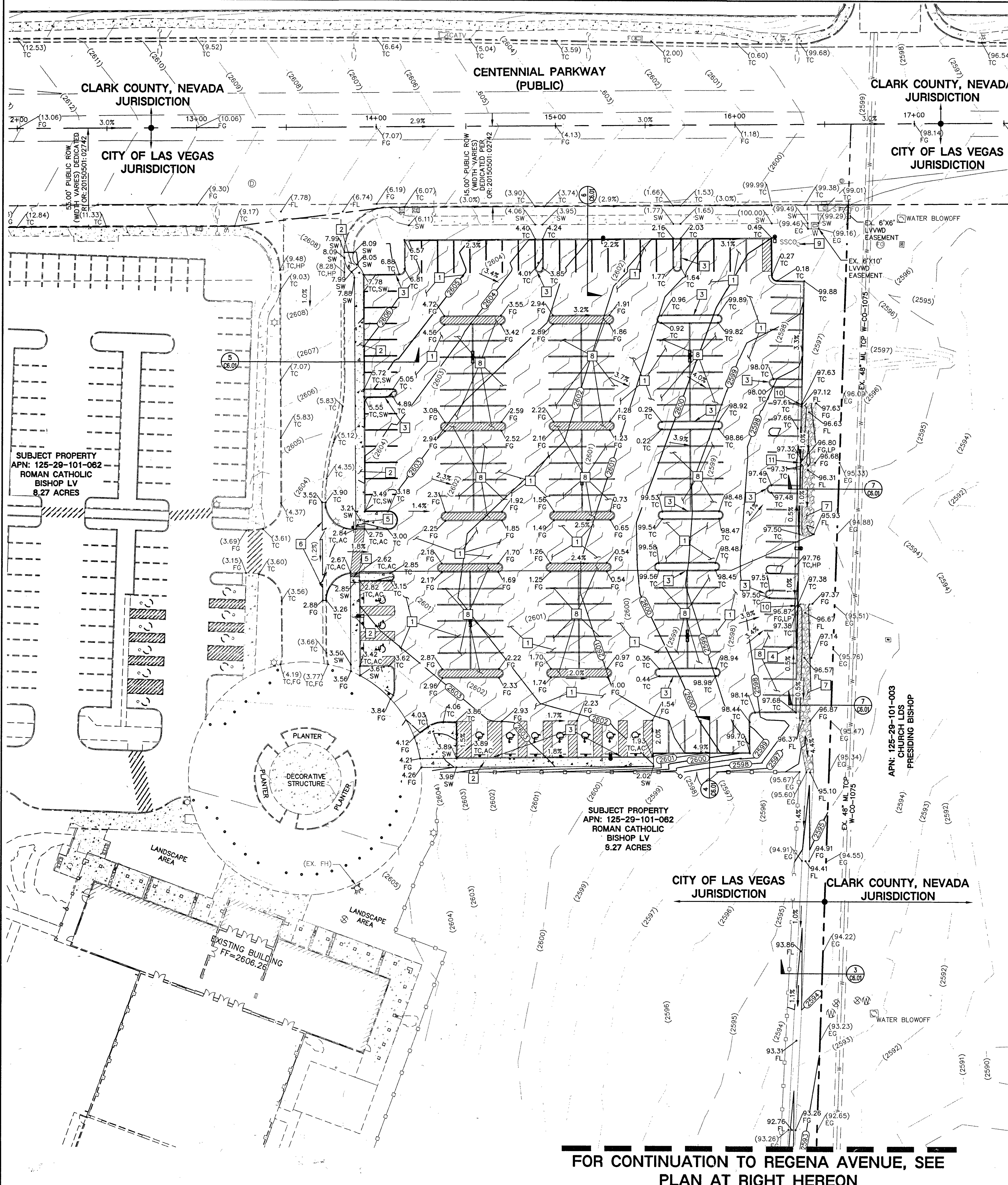
Lochsa
 ENGINEERING

6345 South Jones Blvd
 Suite 100
 Las Vegas, NV 89118
 Tel: (702) 365-3377
 Fax: (702) 365-3377
 www.lochsa.com

GENERAL OVERALL SITE MAP
 ST. ANTHONY OF PADUA
 PARKING LOT ADDITION
 SE CORNER OF CENTENNIAL & FT. APACHE

SHEET PROJECT No. 161124
 DATE: 03/06/2017
 SCALE: 1"=30'
 DRAWN BY: SAP
 DESIGNED BY: SAP
 CHECKED BY: GMM

PROJ.#: 125112 QS: 125-29-NW

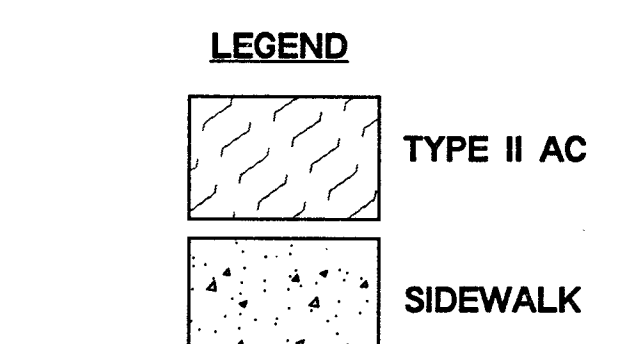
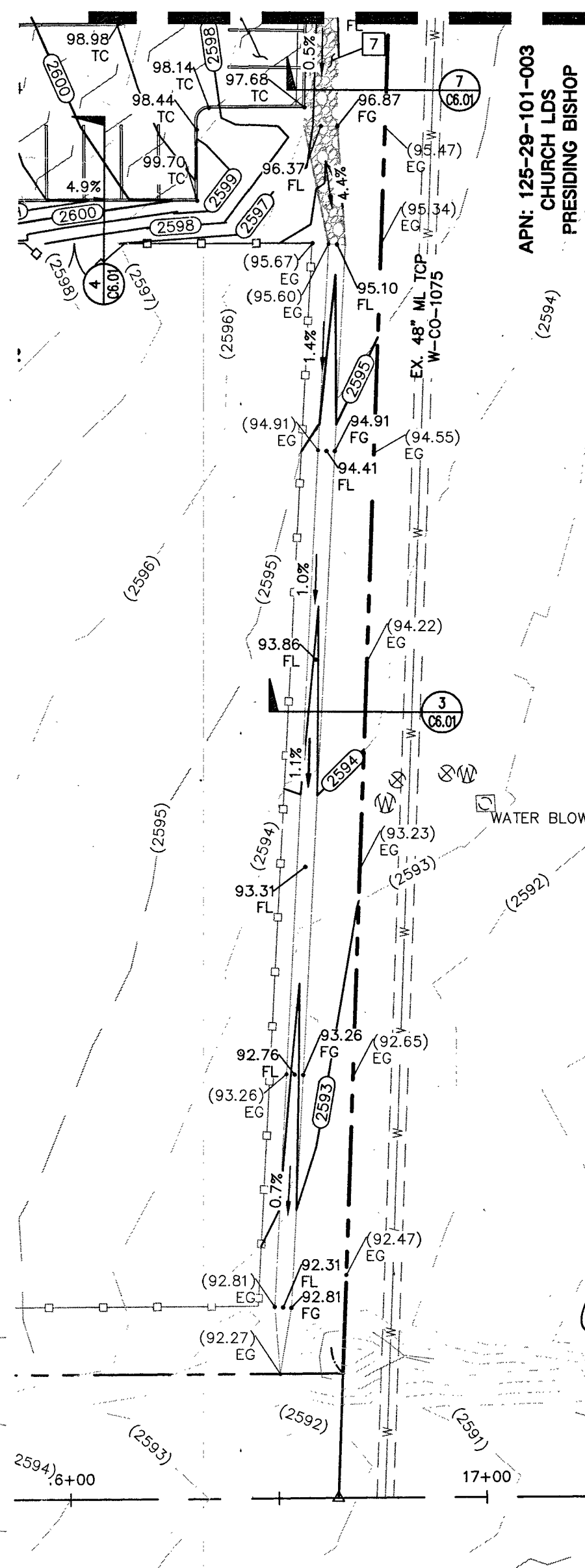


- CONSTRUCTION NOTES:**
- ALL CONSTRUCTION TO BE DONE IN ACCORDANCE WITH "CLARK COUNTY AREA UNIFORM STANDARD DRAWINGS (C.C.A.U.S.D.)" LATEST EDITION AND/OR REGULATING ENTITY HAVING JURISDICTION.
 - NOT ALL NOTES USED ON THIS SHEET -
 - 1 CONSTRUCT AC PAVEMENT PER DETAIL 1 ON C6.01.
 - 2 CONSTRUCT CONC. SIDEWALK PER CCAUSD No. 234.
 - 3 CONSTRUCT "A" TYPE CURB PER DETAIL 2 SHEET C6.01.
 - 4 CONSTRUCT "L" TYPE CURB PER CCAUSD No. 216.
 - 5 CONSTRUCT SIDEWALK RAMP CCAUSD No. 235 CASE I.
 - 6 SAWCUT AND MATCH EXISTING AC PAVEMENT.
 - 7 SWALE (450x3", 1% MAX SLOPE).
 - 8 INSTALL WHITE PAINTED PAVEMENT MARKINGS.
 - 9 ADJUST EXISTING SSSO TO GRADE.
 - 10 CONSTRUCT 2'-4" CURB OPENING PER DETAIL 9, SHEET C6.01
 - 11 CONSTRUCT 4" CURB OPENING PER DETAIL 9, SHEET C6.01

LAS VEGAS VALLEY CONSTRUCTION SITE BEST MANAGEMENT PRACTICES GUIDANCE MANUAL SECTION 3.5.1 STANDARD NOTES 1-5

1. THE OWNER, SITE DEVELOPER, CONTRACTOR, AND/OR THEIR AUTHORIZED AGENTS SHALL EACH DAY REMOVE ALL SEDIMENT, MUD, CONSTRUCTION DEBRIS, OR OTHER POTENTIAL POLLUTANTS THAT MAY HAVE BEEN DISCHARGED TO, OR ACCUMULATED IN, THE PUBLIC RIGHT-OF-WAY OF THE CITY OF LAS VEGAS AS A RESULT OF CONSTRUCTION ACTIVITIES ASSOCIATED WITH THIS SITE DEVELOPMENT OR CONSTRUCTION PROJECT. SUCH MATERIAL SHALL BE PREVENTED FROM ENTERING THE STORM SEWER SYSTEM.
2. ADDITIONAL CONSTRUCTION SITE DISCHARGE BEST MANAGEMENT PRACTICES MAY BE REQUIRED OF THE OWNER AND HIS OR HER AGENTS DUE TO UNFORESEEN EROSION PROBLEMS OR IF THE SUBMITTED PLAN DOES NOT MEET THE PERFORMANCE STANDARDS SPECIFIED IN THE CITY OF LAS VEGAS AND THE LAS VEGAS VALLEY CONSTRUCTION SITE BMP GUIDANCE MANUAL.
3. TEMPORARY OR PERMANENT STABILIZATION PRACTICES WILL BE INSTALLED ON DISTURBED AREAS AS SOON AS PRACTICABLE AND NO LATER THAN 14 DAYS AFTER THE CONSTRUCTION ACTIVITY IN THAT PORTION OF THE SITE HAS TEMPORARILY OR PERMANENTLY CEASED. SOME EXCEPTIONS MAY APPLY; REFER TO THE NEVADA STORMWATER GENERAL PERMIT FOR CONSTRUCTION ACTIVITY NVR10000, SECTION III.A.5.
4. AT A MINIMUM, THE CONTRACTOR OR HIS AGENT SHALL INSPECT ALL DISTURBED AREAS, AREAS USED FOR STORAGE OF MATERIALS AND EQUIPMENT THAT ARE EXPOSED TO PRECIPITATION, VEHICLE ENTRANCE AND EXIT LOCATIONS, AND ALL BMPs WEEKLY, AND WITHIN 24 HOURS AFTER ANY 0.5 INCHES OR MORE. THE CONTRACTOR OR HIS AGENT SHALL UPDATE OR MODIFY THE STORMWATER POLLUTION PREVENTION PLAN AS NECESSARY. SOME EXCEPTIONS TO WEEKLY INSPECTIONS MAY APPLY, SUCH AS SUSPENSION OF LAND DISTURBANCE ACTIVITIES. REFER TO THE NEVADA STORMWATER GENERAL PERMIT FOR CONSTRUCTION ACTIVITY NVR10000, SECTION III.A.12.
5. ACCUMULATED SEDIMENT IN BMP'S SHALL BE REMOVED WITHIN SEVEN DAYS AFTER A STORMWATER RUNOFF EVENT OR PRIOR TO THE NEXT ANTICIPATED STORM EVENT, WHICHEVER IS EARLIER. SEDIMENT MUST BE REMOVED WHEN BMP DESIGN CAPACITY HAS BEEN REDUCED BY 50 PERCENT OR MORE.

PLAN CONTINUATION TO SEE LEFT



FLOOD ZONE NOTE:

THE PROJECT SITE IS COVERED BY THE FLOOD INSURANCE RATE MAP (FIRM) FOR THE CLARK COUNTY, NV AND INCORPORATED AREAS, NEVADA, COMMUNITY PANEL NUMBER: 3200301745E, EFFECTIVE DATE: SEPTEMBER 27, 2002. THE SITE IS ENTIRELY WITHIN ZONE "X" (UNSHADED), DESCRIBED BY FEMA AS: "AREAS DETERMINED TO BE OUTSIDE THE 0.2% ANNUAL CHANCE FLOODPLAIN".

EXISTING UTILITY NOTE:

CONTRACTOR TO ADJUST ALL EXISTING UTILITIES TO MATCH PROPOSED FINISH GRADE ELEVATIONS.

GRADING PLAN CERTIFICATION

NAME: *[Signature]* PE #14526 DATE: 3-6-17

CERTIFY THAT THIS GRADING PLAN IS IN CONFORMANCE WITH APPROVED DRAINAGE STUDY FOR THIS SITE ON FILE AT THE CITY OF LAS VEGAS FOR THIS PROJECT, #95-4847.

NOTE:

PROPERTY OWNER IS RESPONSIBLE TO MAINTAIN THE BEST MANAGEMENT PRACTICES SUCH AS BUT NOT LIMITED TO THE REMOVAL OF ACCUMULATED SEDIMENT AND DEBRIS AND CARE OF THE VEGETATION.

APPROVED FOR CONSTRUCTION

[Signature]
LAS VEGAS VALLEY WATER DISTRICT ENGINEERING SERVICES MANAGER
PROJECT NO. 125112 DATE: 5/15/17

A.P.N.:

125-29-101-062
BASIS OF BEARINGS:
BASIS OF BEARINGS FOR THIS SURVEY IS THE NORTH LINE OF THE NORTHWEST QUARTER (NW 1/4) OF THE NORTHWEST QUARTER (NW 1/4) OF SECTION 29, TOWNSHIP 19 SOUTH, RANGE 60 EAST, M.D.M., AS SHOWN ON FILE WITH THE CLARK COUNTY RECORDER'S OFFICE IN FILE 107, PAGE 31 OF SURVEYS, SAID LINE BEARS: S89°30'32"E

BENCHMARK:

BENCHMARK NO. 60 - BLV9029NW6 FOUND CITY OF LAS VEGAS PIN AND ROUND PLATE IN CONCRETE WALL FOOTING, SOUTHEAST CORNER OF CENTENNIAL PKWY. AND CAMPBELL RD. ELEVATION = 2578.16 FEET / 785.825 METERS (N AVD 88 DATUM)

NOTE:
LOCHSA ENGINEERING ASSUMES NO RESPONSIBILITY FOR EXISTING UTILITY LOCATIONS AND ELEVATIONS. THE UTILITIES SHOWN ON THIS PLAN ARE FROM THE BEST AVAILABLE INFORMATION. IT IS THE CONTRACTOR'S RESPONSIBILITY TO FIELD VERIFY THE LOCATION AND ELEVATION OF ALL UTILITIES, INCLUDING BUT NOT LIMITED TO, THE WATER, FIRE, SANITARY SEWER, STORM SEWER, TELEPHONE, POWER, GAS, AND IRRIGATION LINES PRIOR TO THE COMMENCEMENT OF CONSTRUCTION. IF CONFLICT EXISTS IN THE FIELD, THE CONTRACTOR IS TO NOTIFY THE PROJECT ARCHITECT, OWNER'S REPRESENTATIVE AND THE PROJECT ENGINEER IMMEDIATELY.

Call before you Dig
utility lines. It's costly.

FAST
Call before you Dig
utility lines. It's costly.

1-800-227-2600
1-702-432-6300
1-702-227-2929

CL OR SURVEY LINE	EASEMENT LINE	DESCRIPTION:	CONTOUR LINES	EDGE OF PAVEMENT	"A" TYPE CURBS	"L" TYPE CURBS	WALLS	FENCES	AC PAVEMENT	CONCRETE	SPO. ELEVATIONS	SIGNS	MANHOLE W/ DESCRIPTION	MANHOLE DESCRIPTIONS	FIRE HYDRANTS	GATE VALVES	REDUCERS	CLEAN OUTS	UTILITY BOX OR VAULT	BACKWATER VALVES	100' HPS STREIGHTLIGHTS	150' HPS STREIGHTLIGHTS	200' HPS STREIGHTLIGHTS	250' HPS STREIGHTLIGHTS
PROPERTY LINE	SAWCUT LINE	EXISTING:	(-2210)-								(12.34)		○ = SANITARY SEWER ○ = STORM DRAIN ○ = ELECTRICAL ○ = TELEPHONE							(BWV)				
ROW LINE	SCARP LINE	PROPOSED:	(-2122)-								(12.34)									(BWV)				

Lochsa Engineering

6345 South Jones Blvd
Suite 100
Las Vegas, NV 89118
Tel: (702) 853-9317
Fax: (702) 853-9317
www.lochsa.com

ST. ANTHONY OF PADUA PARKING LOT ADDITION & FT. APACHE SE CORNER OF CENTENNIAL & FT. APACHE

PROJECT No.: 161124
DATE: 03/06/2017
SCALE: 1"=30'
DRAWN BY: SAP
DESIGNED BY: SAP
CHECKED BY: GMM

GUY M. MORRIS
Exp: 12-31-17
CIVIL
No. 14526
03/06/2017

SHEET No. **C4.01**
SHEET 8 OF 8
174 69434
107V 6860

PROJECT: 125112 Q5:125-29-NW

