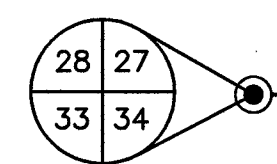
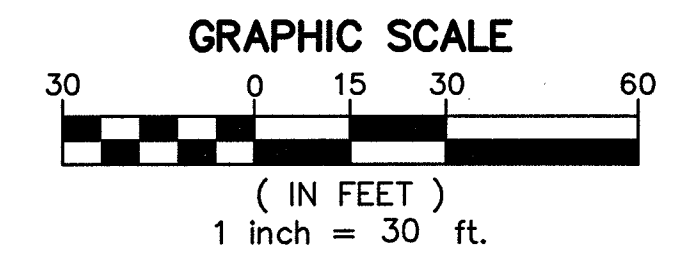
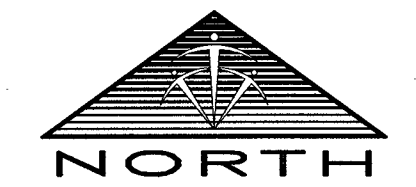


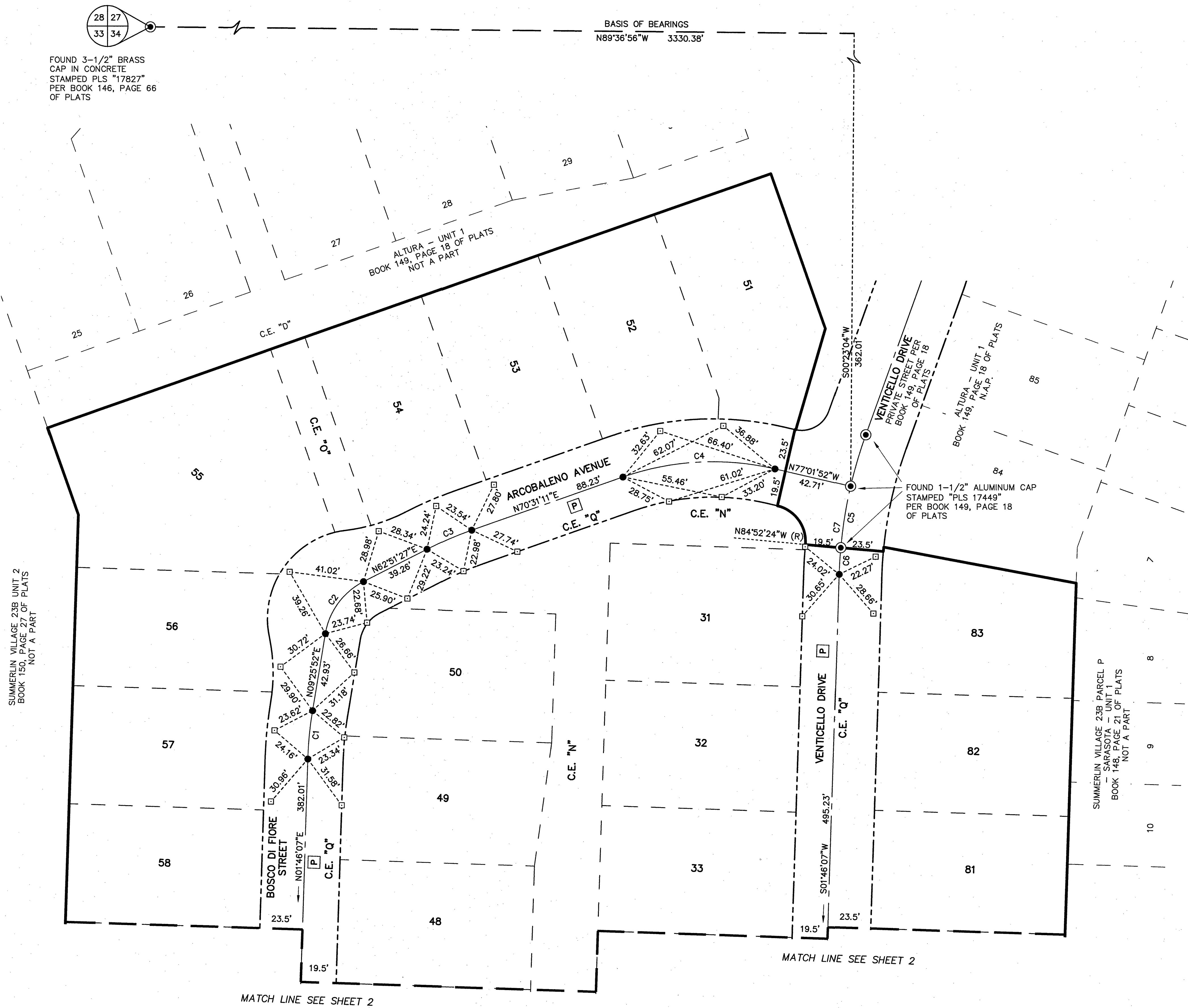
# MONUMENT TIE MAP OF ALTURA - UNIT 2 A COMMON INTEREST COMMUNITY

AS SHOWN ON THAT CERTAIN MAP ON FILE IN THE CLARK COUNTY RECORDER'S OFFICE IN BOOK 150, PAGE 83 OF PLATS,  
SITUATE IN THE NORTH HALF (N 1/2) OF SECTION 34, TOWNSHIP 20 SOUTH, RANGE 59 EAST, M.D.M., CITY OF LAS VEGAS,  
CLARK COUNTY, NEVADA.



FOUND 3-1/2" BRASS  
CAP IN CONCRETE  
STAMPED "PLS 17827"  
PER BOOK 146, PAGE 66  
OF PLATS

BASIS OF BEARINGS  
N89°36'56"W 3330.38'



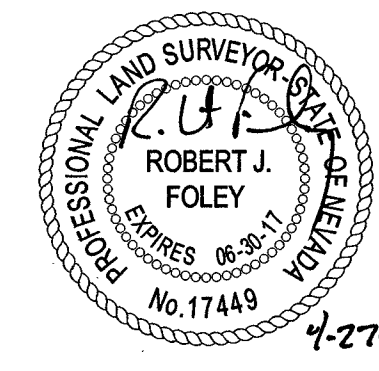
**LEGEND**

- SUBDIVISION BOUNDARY LINE
- - - SECTION LINE
- - - ASSESSOR'S PARCEL LINE
- - - EXISTING RIGHT-OF-WAY LINE
- - - STREET CENTERLINE
- - - DISTANCE TIE LINE
- - - MATCHLINE
- ⊙ FOUND MONUMENT AS DESCRIBED
- SET TYPE III MONUMENT STAMPED "PLS 17449" WITH REFERENCE MONUMENTS
- ⊠ SET TYPE IV-A REFERENCE MONUMENT STAMPED "PLS 17449"
- ⊠ PRIVATE STREET PER BOOK 150, PAGE 83 OF PLATS
- 1 LOT NUMBER
- C.E. COMMON ELEMENT LOT
- L1 LINE SEGMENT
- C1 CURVE SEGMENT
- (R) RADIAL BEARING
- APN ASSESSOR'S PARCEL NUMBER

CURVE TABLE				
CURVE	DELTA	RADIUS	LENGTH	TANGENT
C1	7°39'44"	200.00'	26.75'	13.39'
C2	53°25'36"	39.50'	36.83'	19.88'
C3	7°39'44"	200.00'	26.75'	13.39'
C4	32°26'56"	150.00'	84.95'	43.65'
C5	7°50'31"	250.00'	34.22'	17.14'
C6	3°21'29"	250.00'	14.65'	7.33'
C7	11°12'00"	250.00'	48.87'	24.51'

**SURVEYOR'S CERTIFICATE**

I, ROBERT J. FOLEY, A PROFESSIONAL LAND SURVEYOR LICENSED IN THE STATE OF NEVADA, DO HEREBY CERTIFY THAT THE MONUMENTS HAVE BEEN SET ACCORDING TO THE RECORDED FINAL MAP FOR THIS SUBDIVISION AND THE TIE DISTANCES ESTABLISHED AS SHOWN HEREON. THIS SURVEY WAS COMPLETED ON APRIL 17, 2017.



ROBERT J. FOLEY  
PROFESSIONAL LAND SURVEYOR  
NEVADA LICENSE NO. 17449

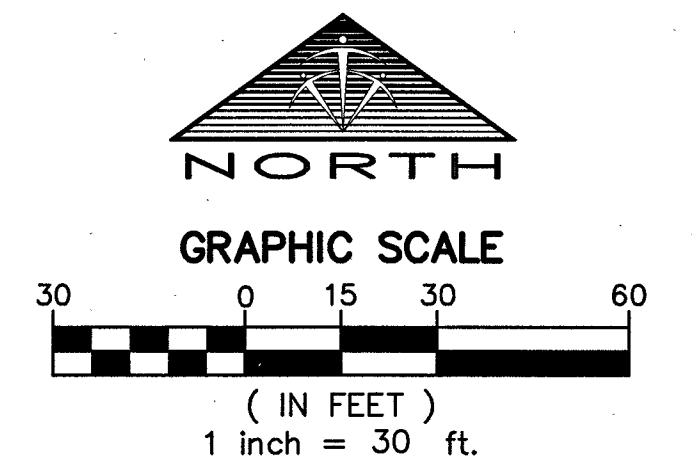
**BASIS OF BEARING**

N89°36'56"W BEING THE NORTH LINE OF SECTION 34, TOWNSHIP 20 SOUTH, RANGE 59 EAST, M.D.M., CITY OF LAS VEGAS, CLARK COUNTY, NEVADA AS SHOWN BY MAP THEREOF ON FILE IN THE CLARK COUNTY RECORDER'S OFFICE, CLARK COUNTY, NEVADA IN BOOK 150, PAGE 83 OF PLATS.

**TRI-CORE  
SURVEYING, LLC**  
6761 WEST CHARLESTON BLVD.  
LAS VEGAS, NEVADA 89146  
TEL (702) 821-1554 FAX (702) 870-4378

# MONUMENT TIE MAP OF ALTURA - UNIT 2 A COMMON INTEREST COMMUNITY

AS SHOWN ON THAT CERTAIN MAP ON FILE IN THE CLARK COUNTY RECORDER'S OFFICE IN BOOK 150, PAGE 83 OF PLATS,  
SITUATE IN THE NORTH HALF (N 1/2) OF SECTION 34, TOWNSHIP 20 SOUTH, RANGE 59 EAST, M.D.M., CITY OF LAS VEGAS,  
CLARK COUNTY, NEVADA.

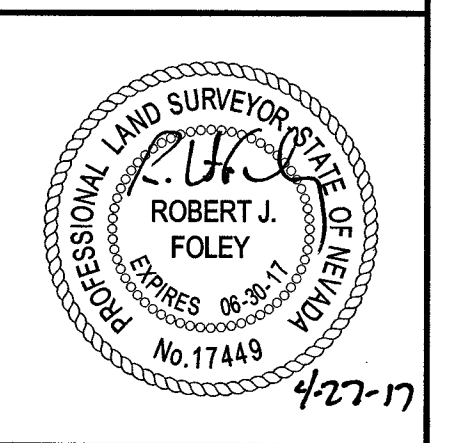
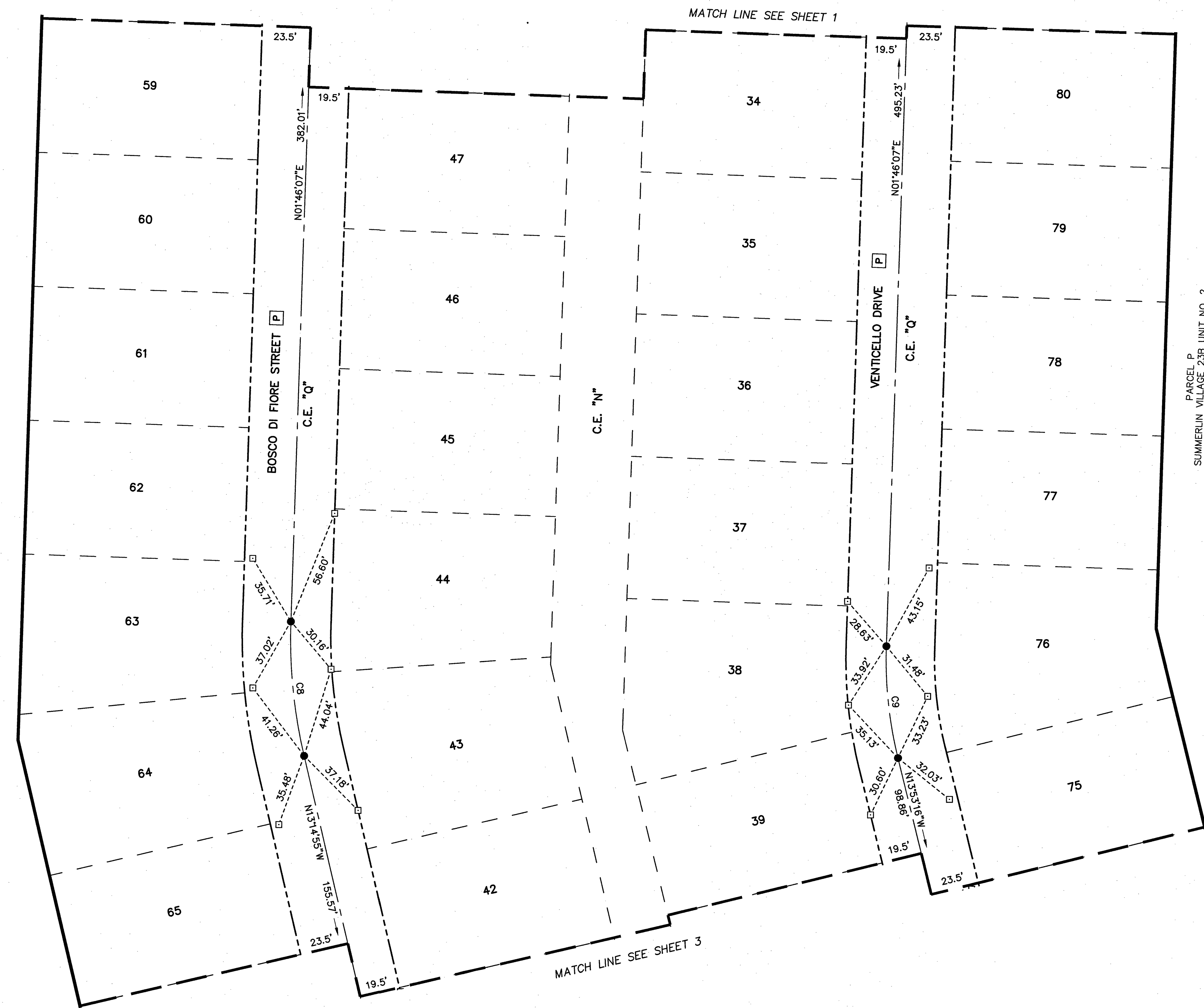


- LEGEND**
- SUBDIVISION BOUNDARY LINE
  - SECTION LINE
  - ASSESSOR'S PARCEL LINE
  - EXISTING RIGHT-OF-WAY LINE
  - STREET CENTERLINE
  - DISTANCE TIE LINE
  - MATCHLINE
  - FOUND MONUMENT AS DESCRIBED
  - SET TYPE III MONUMENT STAMPED "PLS 17449" WITH REFERENCE MONUMENTS
  - SET TYPE IV-A REFERENCE MONUMENT STAMPED "PLS 17449"
  - PRIVATE STREET PER BOOK 150, PAGE 83 OF PLATS
  - 1** LOT NUMBER
  - C.E.** COMMON ELEMENT LOT
  - L1** LINE SEGMENT
  - C1** CURVE SEGMENT
  - (R)** RADIAL BEARING
  - APN** ASSESSOR'S PARCEL NUMBER

CURVE TABLE				
CURVE	DELTA	RADIUS	LENGTH	TANGENT
C8	15°01'03"	250.00'	65.53'	32.95'
C9	15°39'23"	200.00'	54.65'	27.50'

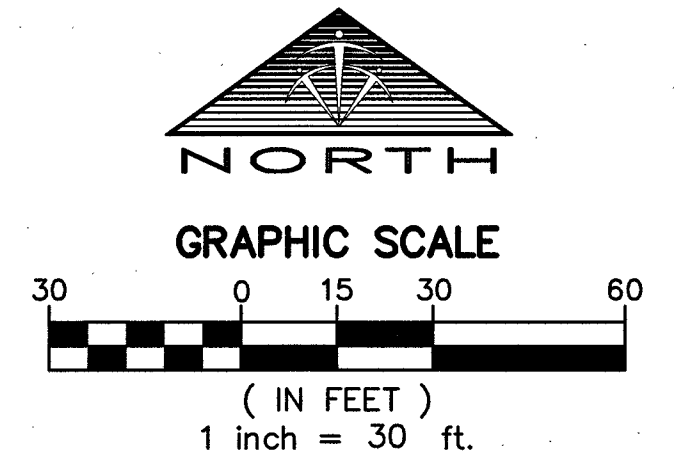
SUMMERLIN VILLAGE 23B UNIT 2  
BOOK 150, PAGE 27 OF PLATS  
NOT A PART

PARCEL P  
SUMMERLIN VILLAGE 23B UNIT NO. 2  
BOOK 145, PAGE 83 OF PLATS  
NOT A PART

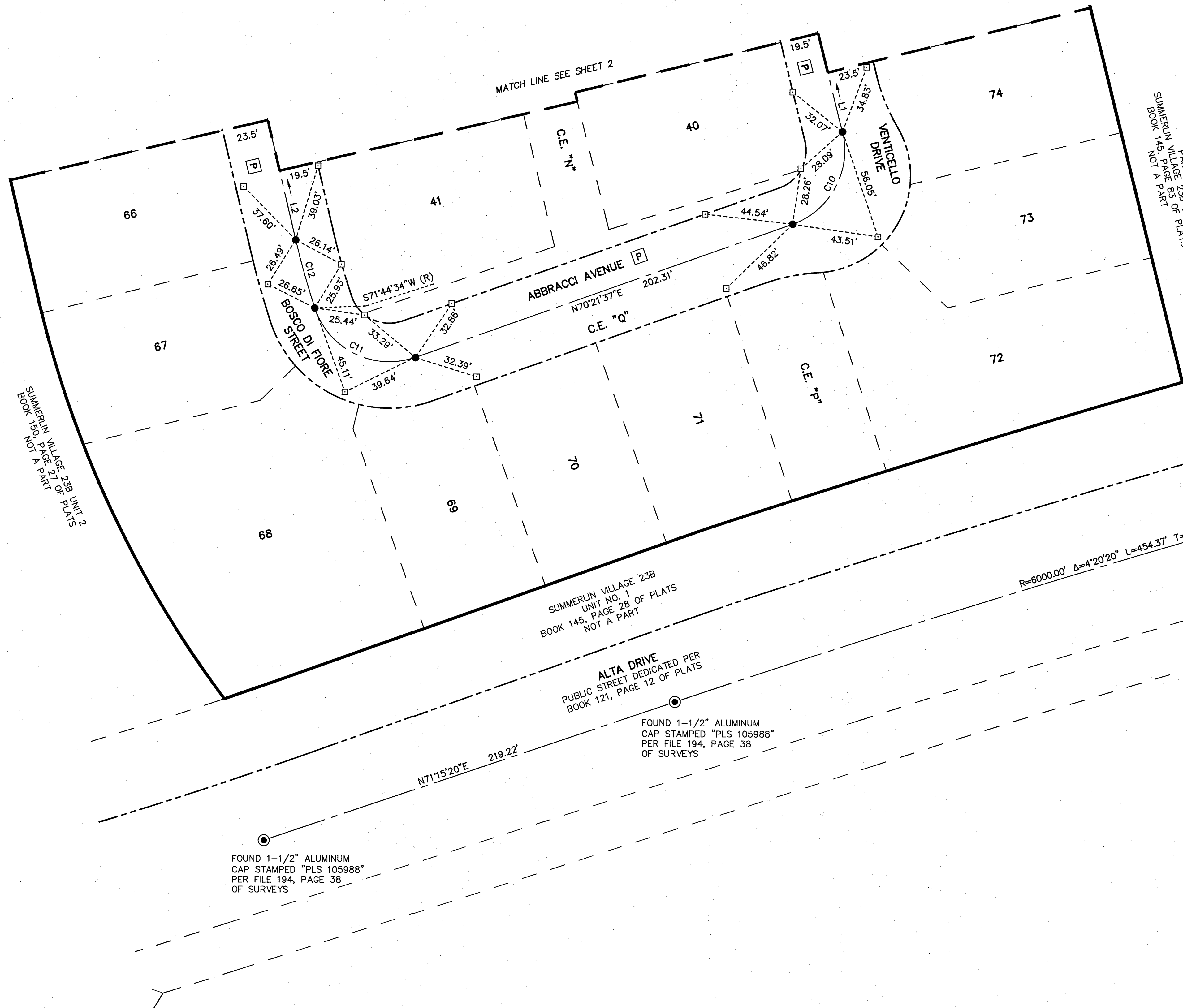


# MONUMENT TIE MAP OF ALTURA - UNIT 2 A COMMON INTEREST COMMUNITY

AS SHOWN ON THAT CERTAIN MAP ON FILE IN THE CLARK COUNTY RECORDER'S OFFICE IN BOOK 150, PAGE 83 OF PLATS,  
SITUATE IN THE NORTH HALF (N 1/2) OF SECTION 34, TOWNSHIP 20 SOUTH, RANGE 59 EAST, M.D.M., CITY OF LAS VEGAS,  
CLARK COUNTY, NEVADA.



- LEGEND**
- SUBDIVISION BOUNDARY LINE
  - - - SECTION LINE
  - - - ASSESSOR'S PARCEL LINE
  - - - EXISTING RIGHT-OF-WAY LINE
  - - - STREET CENTERLINE
  - - - DISTANCE TIE LINE
  - - - MATCHLINE
  - FOUND MONUMENT AS DESCRIBED
  - SET TYPE III MONUMENT STAMPED "PLS 17449" WITH REFERENCE MONUMENTS
  - SET TYPE IV-A REFERENCE MONUMENT STAMPED "PLS 17449"
  - P PRIVATE STREET PER BOOK 150, PAGE 83 OF PLATS
  - 1 LOT NUMBER
  - C.E. COMMON ELEMENT LOT
  - L1 LINE SEGMENT
  - C1 CURVE SEGMENT
  - (R) RADIAL BEARING
  - APN ASSESSOR'S PARCEL NUMBER



FOUND 1-1/2" ALUMINUM CAP STAMPED "PLS 105988" PER FILE 194, PAGE 38 OF SURVEYS

LINE TABLE		
LINE	BEARING	LENGTH
L1	N13°53'16"W	98.86'
L2	N13°14'55"W	155.57'

CURVE TABLE				
CURVE	DELTA	RADIUS	LENGTH	TANGENT
C10	84°14'52"	39.50'	58.08'	35.72'
C11	91°22'57"	39.50'	63.00'	40.46'
C12	5°00'31"	408.88'	35.74'	17.88'

FOUND 1-1/2" ALUMINUM CAP STAMPED "PLS 105988" PER FILE 194, PAGE 38 OF SURVEYS

FOUND 1-1/2" ALUMINUM CAP STAMPED "PLS 105988" PER FILE 194, PAGE 38 OF SURVEYS

