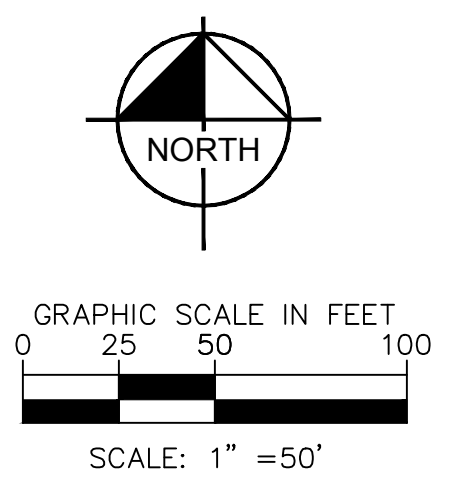
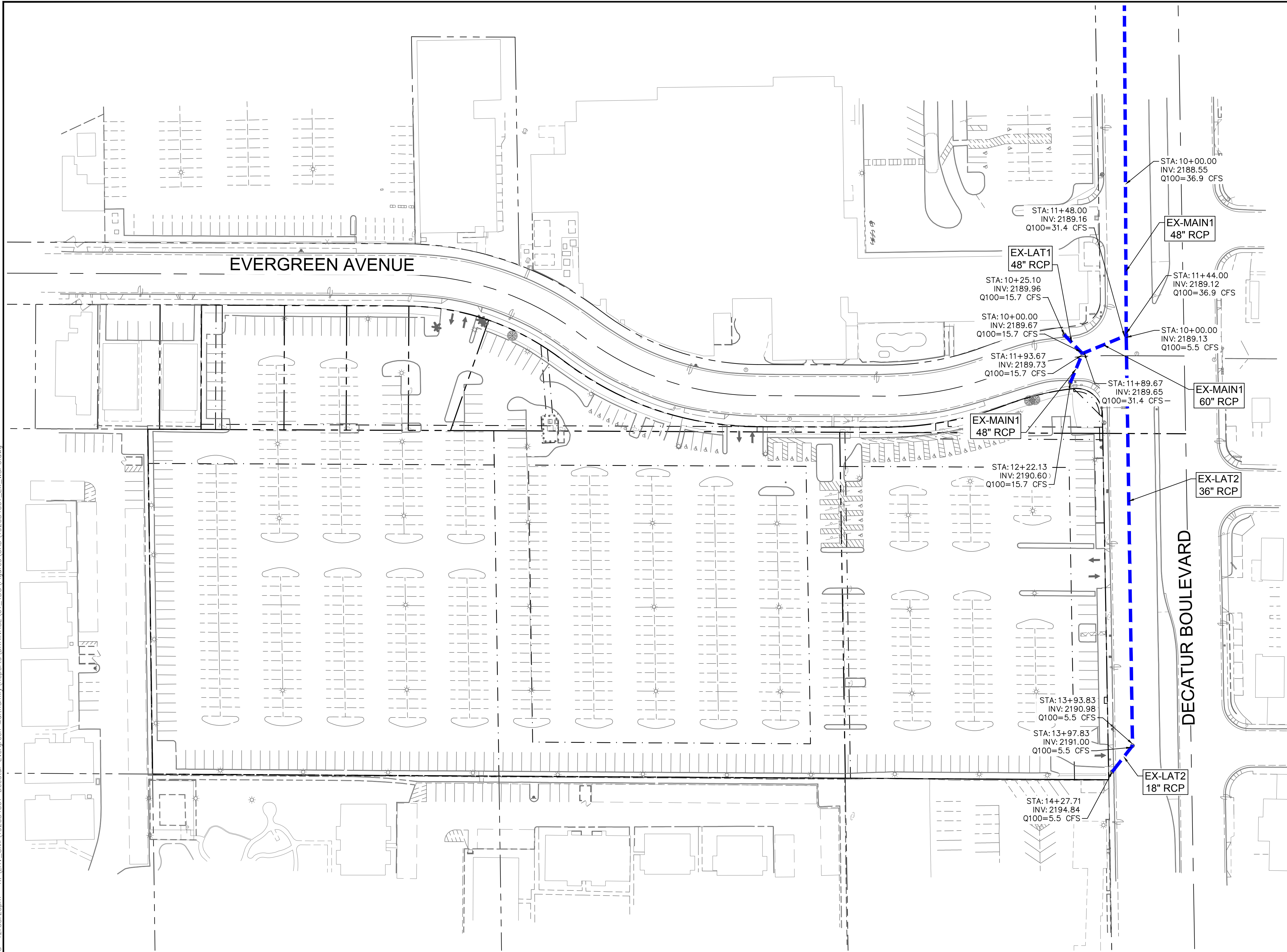


Plotted By: Zltc_jblm - Sheet: KHA - Layout: KHA - July 26, 2023 12:53:23pm - K:\AV_G\192084001-Decatur Evergreen Multifamily\Reports\DRAINAGE\01 - TDS\Figures\CAD\192084001_EX_WSPG.dwg



LEGEND



| EX-MAIN1 | | | | | |
|----------|---------|------------------------|------------------|-----------|---------------|
| Station | Invert | Q ₁₀₀ (cfs) | WSPGW Depth (ft) | Pipe size | CP/Basin |
| 10+00.00 | 2188.55 | 36.9 | 4.00 | 48" RCP | AL09-C + EON1 |
| 11+44.00 | 2189.12 | 36.9 | 3.49 | 48" RCP | |
| 11+48.00 | 2189.16 | 31.4 | 3.68 | 60" RCP | |
| 11+89.67 | 2189.65 | 31.4 | 3.18 | 60" RCP | |
| 11+93.67 | 2189.73 | 15.7 | 3.22 | 48" RCP | |
| 12+22.13 | 2190.60 | 15.7 | 2.32 | 48" RCP | |

| EX-LAT1 | | | | | |
|----------|---------|------------------------|------------------|-----------|----------|
| Station | Invert | Q ₁₀₀ (cfs) | WSPGW Depth (ft) | Pipe size | CP/Basin |
| 10+00.00 | 2189.67 | 15.7 | 3.28 | 48" RCP | AL09-C + |
| 10+25.10 | 2189.96 | 15.7 | 2.99 | 48" RCP | EON1-B |

| EX-LAT2 | | | | | |
|----------|---------|------------------------|------------------|-----------|----------|
| Station | Invert | Q ₁₀₀ (cfs) | WSPGW Depth (ft) | Pipe size | CP/Basin |
| 10+00.00 | 2189.13 | 5.5 | 3.71 | 36" RCP | EON1- |
| 13+93.83 | 2190.98 | 5.5 | 1.88 | 36" RCP | |
| 13+97.83 | 2191.00 | 5.5 | 1.86 | 36" RCP | |
| 14+27.71 | 2194.84 | 5.5 | 0.90 | 18" RCP | A+OFF1 |

| No. | REVISIONS | DATE | BY |
|-----|-----------|------|----|
| | | | |

Kimley-Horn
 © 2025 KIMLEY-HORN AND ASSOCIATES, INC.
 6871 LAS VEGAS BLVD. S., SUITE 320, LAS VEGAS, NV 89119
 PHONE: 702-862-3600
 WWW.KIMLEY-HORN.COM

| | |
|-------------|------------|
| KHA PROJECT | 192084001 |
| DATE | 07/28/2025 |
| SCALE | AS SHOWN |
| DESIGNED BY | CH |
| DRAWN BY | DS |
| CHECKED BY | JZ |

**EXISTING CONDITION
WSPG EXHIBIT**

**DECATUR & EVERGREEN
MIXED-USE PROJECT**
 PREPARED FOR
FORE GREEN DEVELOPMENT LLC
 CITY OF LAS VEGAS, NEVADA

EX WSPG