

Street Flow Summary
(Existing / Developed Condition)

Street	Right of Way Width (ft)	Hydraulic Cross-Section Identifier	10-Year Flow [Q10] (cfs)	10-Year Velocity [v] (fps)	10-Year Flow Depth [d] (ft)	10-Year Velocity x Depth [v x d]	Dry Lane Width (within 1/2 ROW) (ft)
Bonanza Rd	70	1	67	3.01	0.74	2.23	N/A

Street Flow Summary
(Existing / Developed Condition)

Street	Right of Way Width (ft)	Hydraulic Cross-Section Identifier	100-Year Flow [Q100] (cfs)	100-Year Velocity [v] (fps)	100-Year Flow Depth [d] (ft)	100-Year Velocity x Depth [v x d]
Bonanza Rd	70	1	100	3.52	0.82	2.89

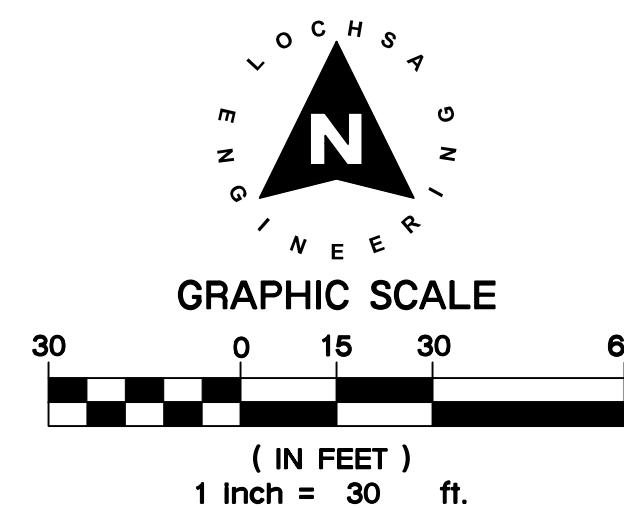
On-site Sections
(Developed Condition)

Hydraulic Cross-Section Identifier	100-Year Flow [Q100] (cfs)	100-Year Velocity [v] (fps)	100-Year Flow Depth [d] (ft)	100-Year Velocity x Depth [v x d]
2	13	2.08	0.31	0.64

Peak Flow Summary
Developed Condition

HEC-1 ID	Area (acres)	10-year Flow (cfs)	100-year Flow (cfs)
*MPU	-	*58	*83
BON	7.61	9	17
ND5	0.33	1	1
CPD1	-	67	100
NX1	1.26	3	5
NX2	1.54	3	5
ND3	2.59	5	9
ND4	4.55	7	13

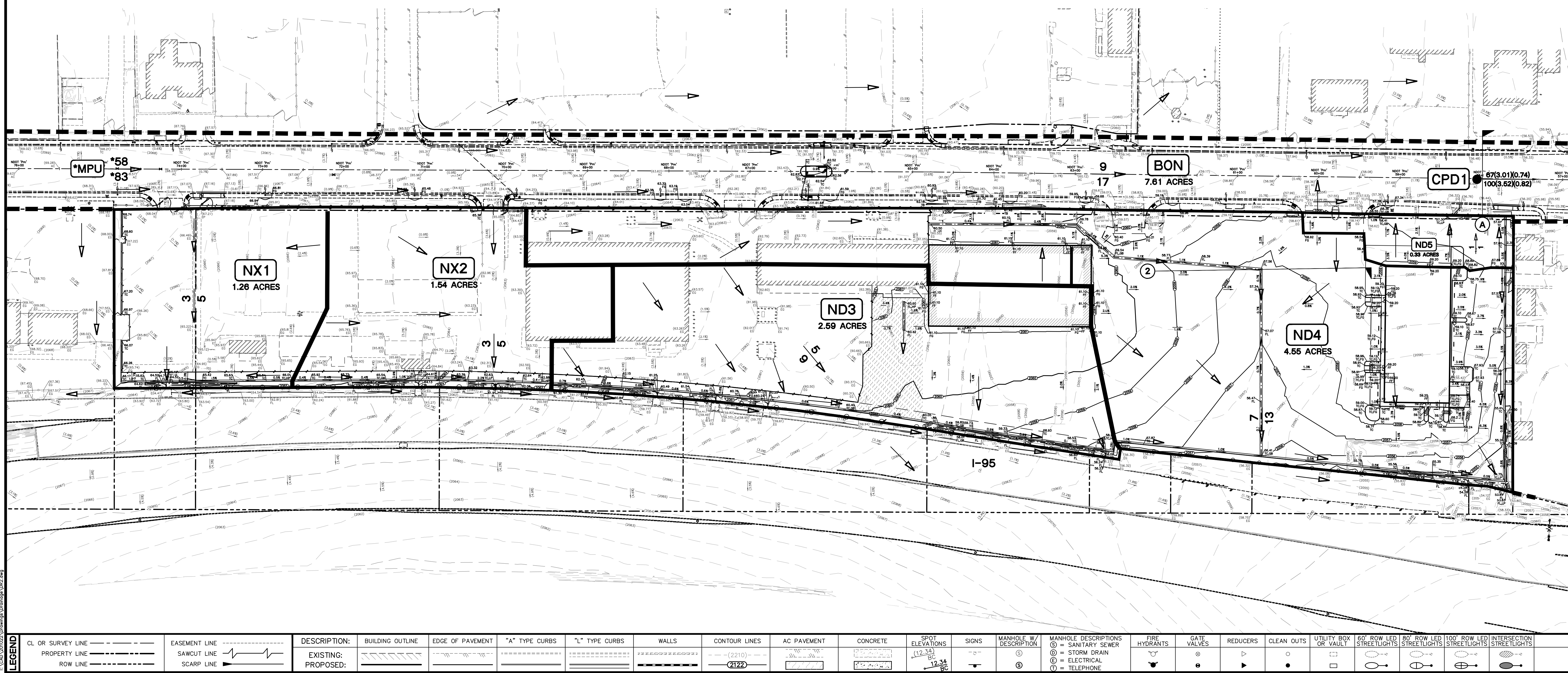
*CLV Central Neighborhood MPU



DRAINAGE LEGEND

ND1	DRAINAGE BASIN LABEL
●	CONCENTRATION POINT
CMD1	COMBINATION POINT
—	ONSITE BASIN BOUNDARY
$\frac{2}{3}$ ▸	Q10 FLOW IN CFS (10 YR.)
$\frac{1}{1}$ (1.0)(1.2) ▸	Q100 FLOW IN CFS (100 YR.)
$\frac{1}{1}$ (1.0)(1.2) ▸	Q10 (V10)(D10)
$\frac{1}{1}$ (1.0)(1.2) ▸	Q100 (V100)(D100)
▸	BASIN FLOW DIRECTION
▸	COMBINED FLOW DIRECTION
①	HYDRAULIC CROSS-SECTION

*Reference flow from CLV Central Neighborhood MPU



ONSITE DRAINAGE MAP
(DEVELOPED CONDITION)

AHERN RENTAL BONANZA WEST
1785 & 1919 W BONANZA RD
CITY OF LAS VEGAS, NEVADA

PROJECT No.:	201022
DATE:	05/18/2021
SCALE:	1" = 30'
DRAWN BY:	CB
DESIGNED BY:	CB
CHECKED BY:	CB

05/18/2021

SHEET No.

DR2

SHEET 2 OF 2

OFFSITE No.

Lochsa
ENGINEERING

6346 South Jones Blvd.
Suite 100
Las Vegas, NV 89118
Phone (702) 395-5912
Fax (702) 395-5917
www.lochsa.com

DESCRIPTION:
REV. DATE: BY:

2/26/2021 11:06 AM
C:\Users\jdoyle\Documents\2021\DR2.dwg

CL OR SURVEY LINE	EASEMENT LINE	DESCRIPTION:	BUILDING OUTLINE	EDGE OF PAVEMENT	"A" TYPE CURBS	"L" TYPE CURBS	WALLS	CONTOUR LINES	AC PAVEMENT	CONCRETE	SPOT ELEVATIONS	SIGNS	MANHOLE W/ DESCRIPTION	MANHOLE DESCRIPTIONS	FIRE HYDRANTS	GATE VALVES	REDUCERS	CLEAN OUTS	UTILITY BOX OR VAULT	60' ROW LED STREETLIGHTS	80' ROW LED STREETLIGHTS	100' ROW LED STREETLIGHTS	INTERSECTION STREETLIGHTS
PROPERTY LINE	SAWCUT LINE	EXISTING:									(12.34)	—	⊙	⊙ = SANITARY SEWER	⊙	▸	○	□	○	○	○	○	○
ROW LINE	SCARP LINE	PROPOSED:									(12.34) BC	—	⊙	⊙ = STORM DRAIN	⊙	▸	○	□	○	○	○	○	○
											(12.34) BC	—	⊙	⊙ = ELECTRICAL	⊙	▸	○	□	○	○	○	○	○
											(12.34) BC	—	⊙	⊙ = TELEPHONE	⊙	▸	○	□	○	○	○	○	○