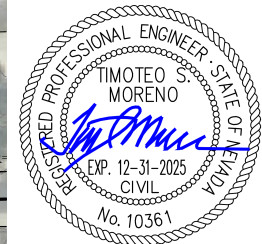
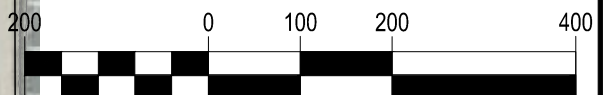


Interim/Developed Condition			
Basin	Area (acres)	Q <sub>10</sub> (cfs)	Q <sub>100</sub> (cfs)
XOFF1	6.7	<1	5
XOFF2	2.3	<1	2
XOFF3	0.58	<1	<1
XOFF4	0.81	<1	1
XOFF5	22.03	5	34
XST1	0.57	1	2
XST2	0.17	<1	1
XST3	0.47	1	2
DON1	1.06	<1	1
DON2	1.08	<1	2
CP1		2	8
CP2		2	9
CP3		6	39



05-28-2025



(IN FEET)  
1 inch = 200ft.

Cross Section - Ultimate/Developed Condition	Description	Q (cfs)	Depth (ft)	Velocity (ft/s)	DxV
Section A - 10yr - Michelli Crest (Developed)	UOFF1+XST1	1	0.20	1.25	0.25
Section A - 100yr - Michelli Crest (Developed)	UOFF1+XST1	6	0.39	1.97	0.77
Section B - 10yr - Michelli Crest (Developed)	XOFF5+UOFF2	5	0.38	1.78	0.68
Section B - 100yr - Michelli Crest (Developed)	XOFF5+UOFF2	35	0.75	2.67	2.00
Section C - 10yr - Bright Angel Way (Developed)	XOFF5+UOFF2+XST3	6	0.32	3.14	1.00
Section C - 100yr - Bright Angel Way (Developed)	XOFF5+UOFF2+XST3	37	0.53	4.63	2.45
Section D - 10yr - 10' Wide Public Drainage Easement (Developed)	CP1	2	0.16	1.77	0.28
Section D - 100yr - 10' Wide Public Drainage Easement (Developed)	CP1	7	0.29	2.81	0.81

DRAINAGE LEGEND	
	BASIN IDENTIFICATION
	BASIN AREA (ACRES)
	BASIN BOUNDARY
	SOIL BOUNDARY
	CONCENTRATION POINT
	FLOW PATH
	CROSS SECTION
	10-YR/100-YR FLOW (CFS)
	REFERENCE FLOW (CFS)

Cross Section - Ultimate/Developed Condition	Description	Q (cfs)	Depth (ft)	Velocity (ft/s)	DxV
Section A - 10yr - Michelli Crest (Developed) - STD. 60' R/W	UOFF1+XST1	1	0.22	1.87	0.41
Section A - 100yr - Michelli Crest (Developed) - STD. 60' R/W	UOFF1+XST1	6	0.35	2.58	0.90
Section B - 10yr - Michelli Crest (Developed) - STD. 60' R/W	XOFF5+UOFF2	5	0.34	2.34	0.80
Section B - 100yr - Michelli Crest (Developed) - STD. 60' R/W	XOFF5+UOFF2	35	0.57	3.49	1.99
Section C - 10yr - Bright Angel Way (Developed) - STD. 60' R/W	XOFF5+UOFF2+XST3	6	0.32	3.14	1.00
Section C - 100yr - Bright Angel Way (Developed) - STD. 60' R/W	XOFF5+UOFF2+XST3	37	0.53	4.63	2.45

TIM S. MORENO, P.E.  
PROFESSIONAL ENGINEERING  
CONSULTANT  
12273 TERRACE VERDE AVENUE  
LAS VEGAS, NV 89138  
PH: (702) 682-7041  
tim@morenopec.com

**FIGURE 8**  
**ULTIMATE/DEVELOPED BASIN MAP**  
**MICHELLI CREST & BRIGHT ANGEL**