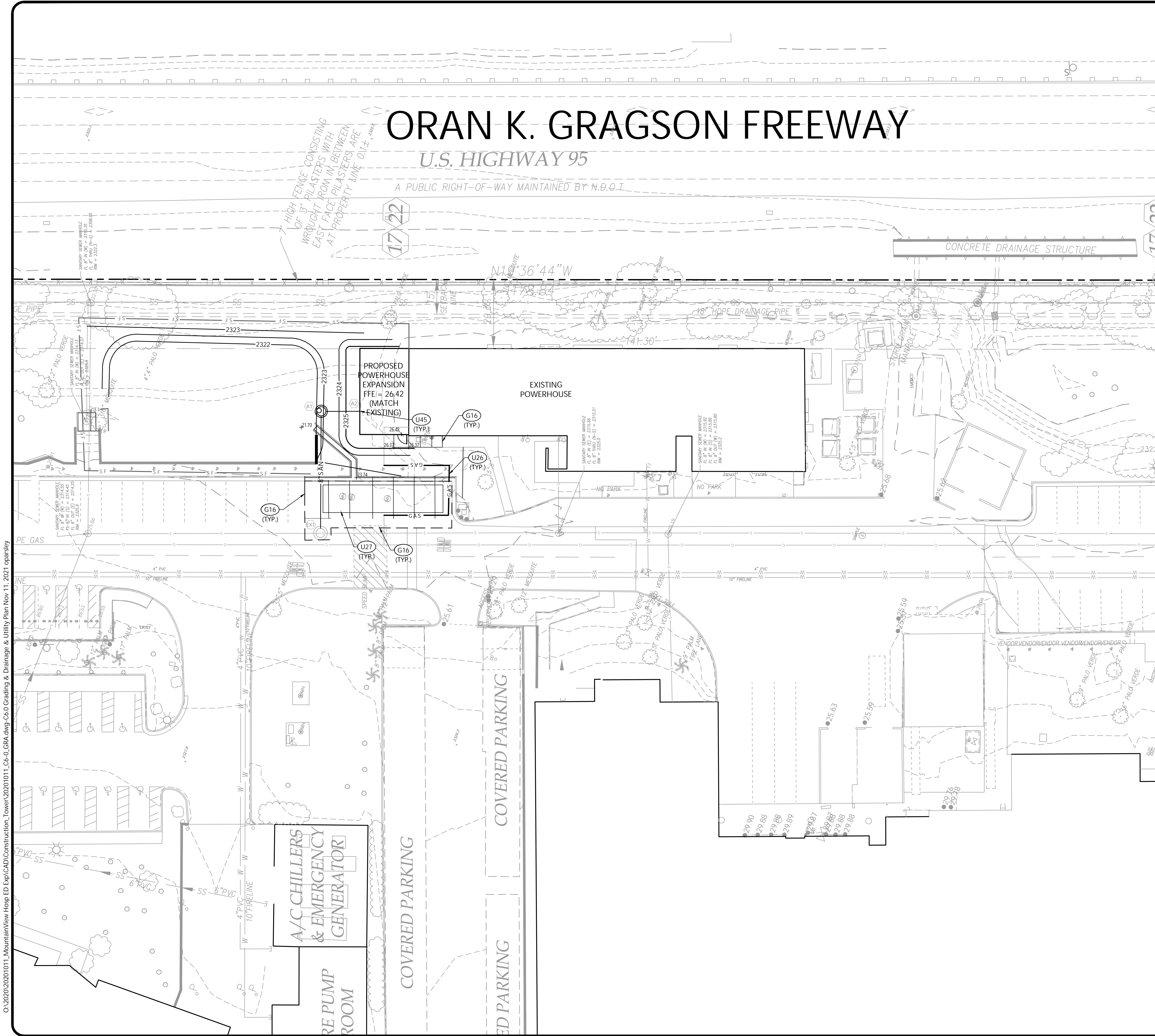


C:\2020\20201011_MountainView Hosp ED Exp\CAD\Construction_Tower\20201011_C6-0_GRA.dwg-C6-0 Grading & Utility Plan Nov 11, 2021 oparis



GRADING & DRAINAGE KEYNOTES	
CODE	DESCRIPTION
G16	MATCH EXISTING GRADE

UTILITY KEYNOTES		
CODE	DESCRIPTION	DET #/SHT #
U20	SANITARY SEWER LINE (8" PVC)	
U24	SANITARY SEWER MANHOLE	7 / C7.0
U25	CORE MANHOLE CONNECTION	6 / C7.0
U26	GAS REROUTE	
U27	FUEL TANK	SEE MEP PLANS
U45	BUILDING CONNECTION	SEE MEP PLANS

PROPOSED FEATURES LEGEND

- STORM PIPE & INLET ——— S1 ———
- SPOT ELEVATION + 91.8
- PROPOSED CONTOUR ——— 90 ———
- DRAINAGE STRUCTURE (C3)
- DOMESTIC SERVICE ——— DW ———
- FIRE SERVICE ——— F ———
- GAS LINE ——— GAS ———
- WATER LINE WITH 90° THRUST BLOCK
- SANITARY SEWER LINE WITH CLEANOUT
- NEW FIRE HYDRANT
- SILT FENCE ——— SF ———
- TREE PROTECTION ——— TP ———

NOTES:

- SEE SHEET C2.0 FOR GRADING AND DRAINAGE AND SITE UTILITY NOTES.
- ALL ELEVATIONS REFERENCE THE NORTH AMERICAN VERTICAL DATUM OF 1988 (NAVD 88).
- ALL ONSITE STORM DRAIN FACILITIES ARE PRIVATELY OWNED AND PRIVATELY MAINTAINED.
- THE SUBJECT PROPERTY DOES NOT LIE WITHIN A SPECIAL FLOOD HAZARD ZONE ACCORDING TO COMMUNITY PANEL NO. 320032135F OF THE F.E.M.A. FLOOD INSURANCE RATE MAPS FOR PROJECT COUNTY COUNTY, NEVADA, WITH AN EFFECTIVE DATE OF 11/16/11.

BASIS OF BEARINGS

NORTH 89°59'07" EAST, BEING THE BEARING OF THE NORTH LINE OF THE NORTHEAST QUARTER (NE 1/4) OF SECTION 15, TOWNSHIP 20 SOUTH, RANGE 60 EAST, M.D.M., CLARK COUNTY, NEVADA, AS DELINEATED BY MAP ON FILE IN BOOK 62, PAGE 44 OF PLATS IN THE CLARK COUNTY RECORDER'S OFFICE.

BENCHMARK

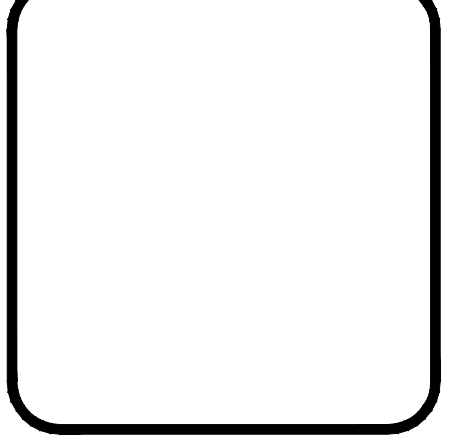
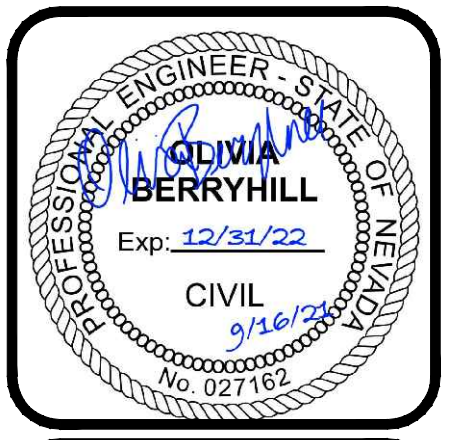
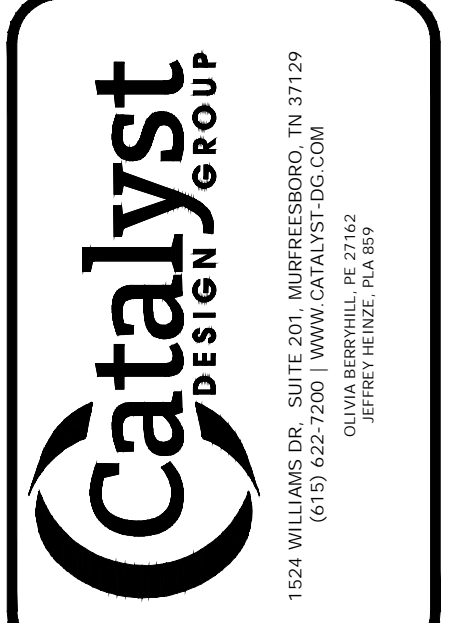
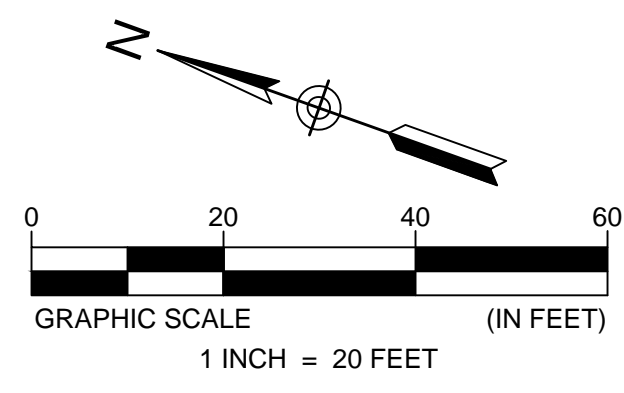
CITY OF LAS VEGAS BENCHMARK 040015M4, BEING A RIVET & PLATE IN THE TOP OF CURB, LOCATED IN THE TOP OF CURB ON THE SOUTH SIDE OF CHEYENNE AVENUE, APPROX. 600' WEST OF TENAYA DRIVE. ELEVATION = 2335.79 FEET (711.950 METERS) N.A.V.D. 1988.

PROPOSED SANITARY STRUCTURES					
CODE	STRUCTURE DESCRIPTION	DETAIL	DEPTH	ELEVATION	
				TOP OF GRATE	INVERT
EX1	EXISTING STRUCTURE	6 / C7.0	9.56	2324.80	2315.24
A1	MANHOLE	7 / C7.0	3.14	2322.50	2319.36
A2	BUILDING CONNECTION	SEE MEP PLANS	5.30	2326.00	2320.70

PROPOSED SANITARY SEWER PIPE								
CODE	FROM		TO		GRADE	DIAMETER (IN)	TYPE	LENGTH (L.F.)
	INV.	CODE	INV.	CODE				
A1	2319.36	EX1	2315.24	A1	8.45%	8	PVC	49
A2	2320.70	A1	2319.46	A1	8.45%	8	PVC	15



Know what's below. Call before you dig.



**MOUNTAINVIEW HOSPITAL
TOWER ADDITION**
LAS VEGAS, NEVADA

NO.	DATE	DESCRIPTION
1	09/16/2021	CONSTRUCTION DOCUMENTS

DRAWING TITLE
GRADING & DRAINAGE & UTILITY PLAN

PROJECT NUMBER
20201011

DRAWING NUMBER
C6.0