

DISCLAIMER NOTE:
 UTILITY LOCATIONS SHOWN HEREON ARE APPROXIMATE ONLY. IT SHALL BE THE CONTRACTOR'S RESPONSIBILITY TO DETERMINE THE EXACT HORIZONTAL AND VERTICAL LOCATION OF ALL EXISTING UNDERGROUND OR OVERHEAD UTILITIES PRIOR TO COMMENCING CONSTRUCTION. NO REPRESENTATION IS MADE THAT ALL EXISTING UTILITIES ARE SHOWN HEREON. THE ENGINEER ASSUMES NO RESPONSIBILITY FOR UTILITIES NOT SHOWN OR UTILITIES NOT SHOWN IN THEIR PROPER LOCATION. CONTRACTOR TO NOTIFY ENGINEER OF ANY CHANGES OR DISCREPANCIES.

Call before you Dig
 AVOID CURTING UNDERGROUND UTILITY LINES. IT'S CRITICAL.

Call before you DO OVERHEAD
 AVOID HITTING OVERHEAD POWER LINES. IT'S COSTLY.

Call 811
 1-800-642-2444

CALL BEFORE YOU DO OVERHEAD
 1-702-227-2929

SEWER CONNECTION NOTE
 ONE OR MORE SEGMENTS OF THE DOWNSTREAM SEWER SYSTEM THAT WILL SERVE THIS PROJECT HAS NOT BEEN COMPLETED AND/OR ACCEPTED FOR MAINTENANCE BY THE CITY OF LAS VEGAS. ANY WORK DONE ON THIS PROJECT PRIOR TO THE COMPLETION AND/OR ACCEPTANCE OF THE DOWNSTREAM SEWER SYSTEM(S) SHALL BE DONE AT THE DEVELOPER'S OWN RISK. THE CITY OF LAS VEGAS RESERVES THE RIGHT TO PREVENT THE PHYSICAL CONNECTION OF THIS PROJECT INTO THE DOWNSTREAM SEWER SYSTEM UNTIL ALL SEGMENTS HAVE BEEN COMPLETED AND ACCEPTED FOR MAINTENANCE, OR UNTIL SUCH TIME AS THEY ARE DEEMED AVAILABLE FOR SERVICE.

WATER MAIN JOINT DEFLECTION, PER UDACS 2.07.01 AND 2.07.03.
 NOTE:
 INSTALL PIPELINE MARKER BALLS, PER UDACS PLATE NO. 15
 ALL SEWER/STORM DRAIN CROSSING WATER LINES MUST COMPLY WITH UDACS SECTION 2.22.

LVVWD HIGH PRESSURE NOTES

- ENTIRE PROJECT IS OVER 100 PSI STATIC.
- ALL WATER PIPELINES TO BE RATED 250 PSI MINIMUM.
- ALL WATER JOINTS MECHANICALLY RESTRAINED PER UDACS SECTION 2.15.
- WATER MAINS TO BE TESTED AT 225 PSI.

DROP INLET NOTE:
 (1) WHERE TO FOOT PARALLEL SEPARATION FROM WATER MAIN IS NOT PRACTICABLE SEPARATION SHOULD NEVER BE LESS THAN 5-FOOT AND DROP INLET SHOULD BE CONSTRUCTED AS CAST-IN-PLACE MONOLITHIC POUR WITH WATERSTOP BETWEEN SLAB AND WALLS. BASE, WALLS AND TOP TO BE CONSTRUCTED WITH WATERSTOP CENTER BULB, OR FLAT STRIP. (VINYLEX, GREENSTREAK PLASTIC PRODUCTS OR APPROVED EQUAL)

BASIS OF BEARINGS
 NORTH 91°23'00" WEST, BEING THE BEARING OF THE WEST LINE OF SECTION 22, TOWNSHIP 20 SOUTH, RANGE 59 EAST, M.D.M., CITY OF LAS VEGAS, CLARK COUNTY, NEVADA, AS SHOWN BY MAP THEREOF ON FILE IN THE CLARK COUNTY RECORDER'S OFFICE IN BOOK 186, PAGE 15 OF PLATS.

BENCHMARK
 CITY OF LAS VEGAS BENCHMARK NO. 7LVO927E4
 A RIVET AND PLATE IN THE TOP OF CURB AT THE SOUTHEAST CORNER OF FAR HILLS AVE AND DESERT FOOTHILLS DR.
 ELEVATION = 1,016.62 METERS (NAV'D'88 v.2008)
 ELEVATION = 3335.36 US SURVEY FEET (NAV'D'88 v.2008)

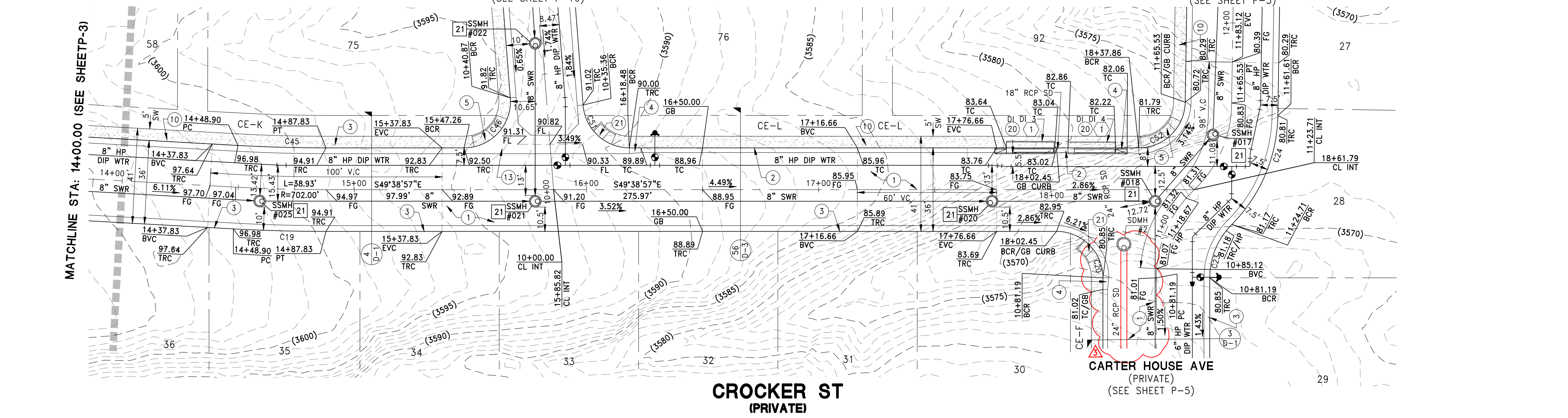
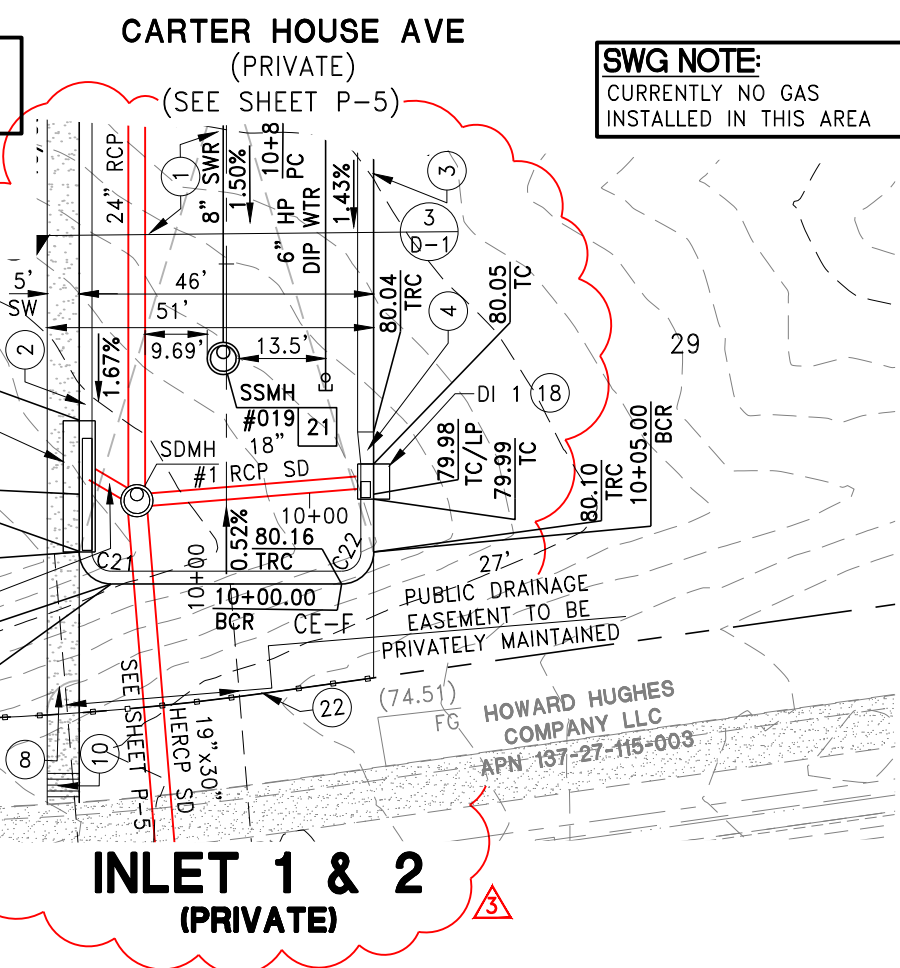
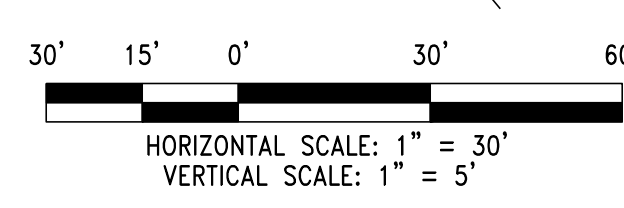
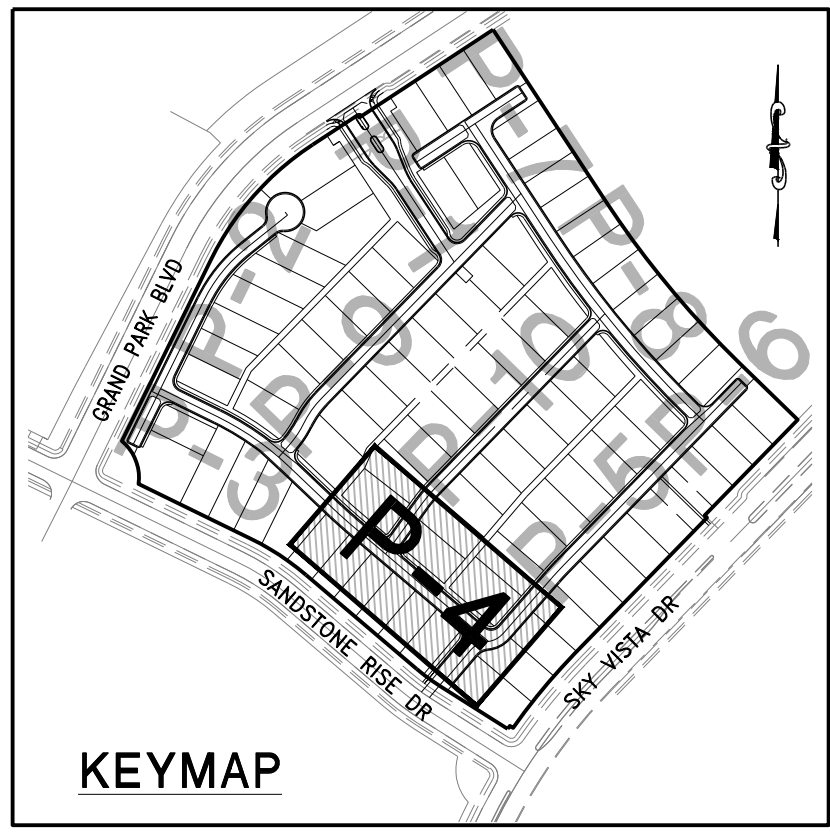
SIGHT VISIBILITY ZONE
 NO WALLS, FENCES, SHRUBS, UTILITY APPURTENANCES OR ANY OTHER OBJECT, OTHER THAN TRAFFIC CONTROL DEVICES, FIRE HYDRANTS, TREES, AND STREET LIGHT POLES, MAY BE CONSTRUCTED OR INSTALLED WITHIN THE SIGHT VISIBILITY ZONE UNLESS SAID OBJECT IS MAINTAINED AT LESS THAN 24 INCHES IN HEIGHT, MEASURED FROM TOP OF CURB, OR WHERE NO CURB EXISTS, A HEIGHT OF 27 INCHES MEASURED FROM THE TOP OF ADJACENT ASPHALT, GRAVEL OR PAVEMENT STREET SURFACE. THIS RESTRICTION EXTENDS ALONG THE SIGHT VISIBILITY LINE THROUGH LANDSCAPED MEDIANS.

- CONSTRUCTION NOTES**
- CONSTRUCT PG PAVEMENT PER DETAILS 1 THRU 7 ON SHEET D-1, DETAIL 21 ON SHEET D-2 AND DETAIL 56 ON SHEET D-3
 - CONSTRUCT "L" TYPE CURB AND GUTTER PER CCAUSD #216 STD DWG #5-48
 - CONSTRUCT 30" ROLL CURB PER SUMMERLIN IMPROVEMENT STD DWG #5-48
 - CONSTRUCT 5" CURB TRANSITION FROM 24" "L" TYPE CURB AND GUTTER TO 30" ROLL CURB PER CCAUSD #216 STD DWG #5-48
 - CONSTRUCT SIDEWALK RAMPS USING ARMOR TILE TRUNCATED DOMES OR EQUIVALENT PER CCAUSD #235 (CASE 1) SEE PLAN AND PROFILE SHEET CURVE TABLES FOR "A" AND "B" DIMENSIONS
 - CONSTRUCT SIDEWALK RAMPS USING ARMOR TILE TRUNCATED DOMES OR EQUIVALENT PER SUMMERLIN IMPROVEMENT STD DWG #5-75 SEE PLAN AND PROFILE SHEET CURVE TABLES FOR "A" AND "B" DIMENSIONS
 - CALL BOX
 - CONSTRUCT PEDESTRIAN ACCESS GATE (SAME SIZE AS SIDEWALK)
 - CONSTRUCT STRUCTURAL COLLAR PER DETAIL 49 SHEET D-3
 - CONSTRUCT 5" SIDEWALK PER CCAUSD #234 (5" THICK WHEN ADJACENT TO ROLL CURB)
 - CONSTRUCT "A" TYPE ISLAND CURB PER CCAUSD #219
 - CONSTRUCT PAVERS PER DETAIL 45 ON SHEET D-3
 - CONSTRUCT 6" CROSS GUTTER PER SUMMERLIN IMPROVEMENT STD DWG #5-64
 - CONSTRUCT ELECTRONICALLY CONTROLLED ACCESS GATES
 - EX SIDEWALK TO BE REMOVED
 - EX "L" CURB AND GUTTER TO BE REMOVED
 - EX SIDEWALK TO BE PROTECTED AND REMAIN IN PLACE
 - CONSTRUCT 6" TYPE CM2 DROP INLET PER CCAUSD #412.1 WITH STORM WATER INLET STAMP PER CCAUSD #421
 - CONSTRUCT 10" TYPE CM2 DROP INLET PER CCAUSD #421 WITH STORM WATER INLET STAMP PER CCAUSD #421
 - CONSTRUCT 8" TYPE CM2 DROP INLET PER CCAUSD #421 WITH STORM WATER INLET STAMP PER CCAUSD #421
 - CONSTRUCT SIDEWALK RAMP PER DETAIL 44 ON SHEET D-3
 - CONSTRUCT 6" HIGH WROUGHT IRON FENCE AND/OR GATES PER CCAUSD 425.51 SHEET 3 OF 3
 - INSTALL DOUBLE 15" LVVWD ACCESS GATES
 - STORM DRAIN CAP PER DETAIL 50 SHEET D-3
 - EX "A" TYPE ISLAND MEDIAN TO BE REMOVED
 - CONSTRUCT 7.5" TYPE CM2 DROP INLET PER CCAUSD #412.1 WITH STORM WATER INLET STAMP PER CCAUSD #421
 - CONSTRUCT 17.5" TYPE CM2 DROP INLET PER CCAUSD #412.1 WITH STORM WATER INLET STAMP PER CCAUSD #421
 - CONSTRUCT STRUCTURAL PIPE TO PIPE COLLAR PER DETAIL 43 SHEET D-3
 - INSTALL AREA DRAIN PER DETAIL 57, 58, AND 59 ON SHEET D-3

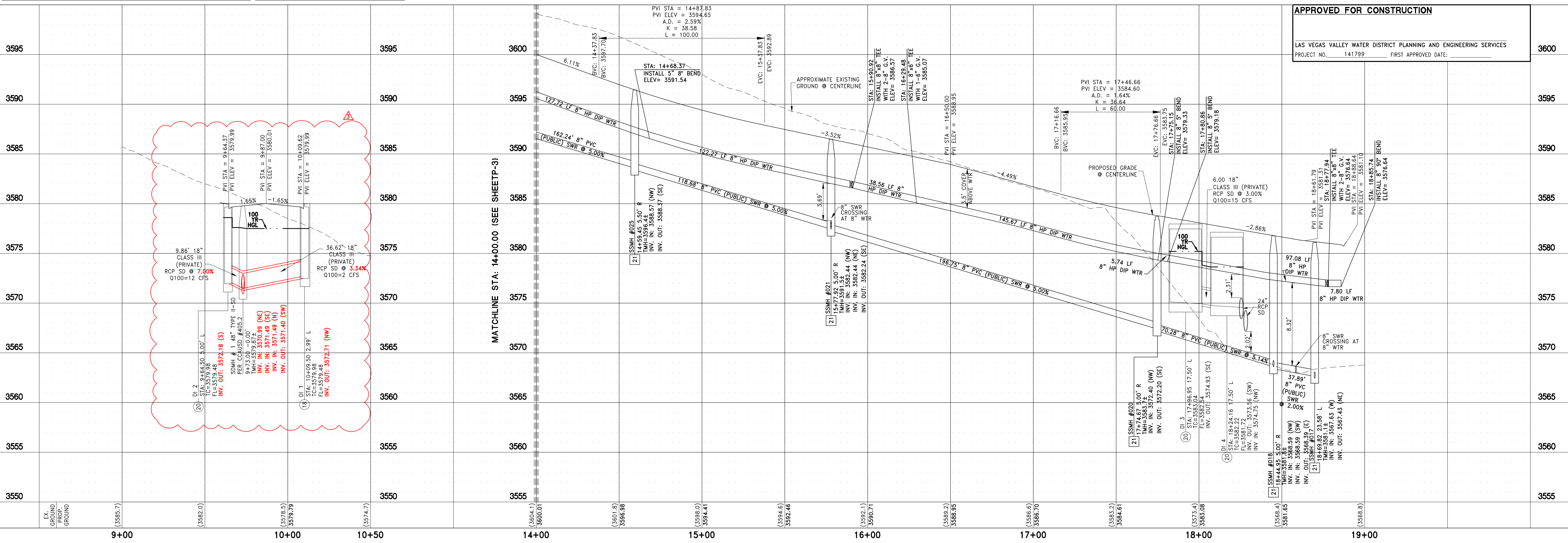
- SEWER CONSTRUCTION NOTES**
- INSTALL 48" STANDARD MANHOLE WITH WATERTIGHT JOINTS (PER DCSWCS STD. NO. SD-1, SD-3, SD-4, SD-5) WITH SINGLE 24" LID
 - (TYP) INSTALL 4" SEWER LATERAL (PER DCSWCS STD NO. SD-17, SD-20, SD-21, SD-23 & SD-24)
 - TYPICAL LOCATION FOR SEWER LATERAL AT WATER MAIN CROSSING. ALL PVC SEWER LATERALS MUST MAINTAIN 18" VERTICAL CLEARANCE BELOW WATER MAIN AT CROSSINGS.
 - REMOVE CAP AND CONNECT TO EX SEWER
 - INSTALL 48" STANDARD MANHOLE WITH WATERTIGHT JOINTS (PER DCSWCS STD. NO. SD-1, SD-3, SD-4 & SD-5) WITH CORROSION PROTECTION PER DCSWCS 3.16.8, WITH SINGLE 24" LID.

CURVE TABLE

CURVE #	DELTA	RADIUS	LENGTH	TANGENT	"A"	"B"
C19	3°10'38"	720.00'	39.92'	19.97'		
C20	53°37'37"	20.00'	18.72'	10.11'	4.5'	N/A
C21	90°00'00"	5.00'	7.85'	5.00'		
C22	90°00'00"	5.00'	7.85'	5.00'		
C23	44°53'50"	32.59'	25.54'	13.47'		
C24	43°59'24"	68.00'	52.21'	27.47'		
C45	3°10'38"	684.00'	37.93'	18.97'		
C46	94°26'28"	20.00'	32.97'	21.61'	9.5'	4.5'
C51	21°08'10"	20.00'	7.38'	3.73'	N/A	4.5'
C52	89°05'34"	20.00'	31.10'	19.69'	12.0'	4.5'



DEPTH OF COVER DURING CONSTRUCTION
 MAINTAIN MINIMUM TWENTY-FOUR (24) INCH COVER PER UDACS SECTION 2.08.04. GRADING MUST BE COMPLETED PRIOR TO WATERLINE INSTALLATION.



APPROVED FOR CONSTRUCTION
 LAS VEGAS VALLEY WATER DISTRICT PLANNING AND ENGINEERING SERVICES
 PROJECT NO. 141799 FIRST APPROVED DATE:

DATE: 10/31/2024
 HORIZ. SCALE: 1"=30'
 VERT. SCALE: 1"=5'
 DRAWN BY: GS/SR
 DESIGNED BY: SC
 CHECKED BY: CZ
 APPROVED BY: CLS
 PROJECT #: 141799

1885 FESTIVAL PLAZA DR SUITE 200 LAS VEGAS, NV 89135
 T 702-251-8554 F 702-251-8554

taylor morrison
RCI ENGINEERING
 500 SOUTH HANCOCK DRIVE, SUITE 17, LAS VEGAS, NV 89106
 ENGINEER: CAROLYN R. ZIRNYI
 DATE: 10/31/2024

IMPROVEMENT PLANS FOR ASHLAND AT SUMMERLIN VILLAGE 25 (PARCELS H AND I) A SINGLE FAMILY RESIDENTIAL SUBDIVISION PLAN AND PROFILE CROCKER ST STA:14+00.00-19+00.00 AND DI#1 AND DI#2 CITY OF LAS VEGAS NEVADA

PROFESSIONAL ENGINEER
 CHRISTOPHER R. ZIRNYI
 Exp. 6/30/2026
 CIVIL ENGINEER
 No. 13576 REISSUED 03/20

DATE: 10/31/2024
 DRAWING P-4
 SHEET 28 OF 44
 CLV PROJECT #L24-00110

DISCLAIMER NOTE:
 UTILITY LOCATIONS SHOWN HEREON ARE APPROXIMATE ONLY. IT SHALL BE THE CONTRACTOR'S RESPONSIBILITY TO DETERMINE THE EXACT HORIZONTAL AND VERTICAL LOCATION OF ALL EXISTING UNDERGROUND OR OVERHEAD UTILITIES PRIOR TO COMMENCING CONSTRUCTION. NO REPRESENTATION IS MADE THAT ALL EXISTING UTILITIES ARE SHOWN HEREON. THE ENGINEER ASSUMES NO RESPONSIBILITY FOR UTILITIES NOT SHOWN OR UTILITIES NOT SHOWN IN THEIR PROPER LOCATION. CONTRACTOR TO NOTIFY ENGINEER OF ANY CHANGES OR DISCREPANCIES.

Call before you Dig
 AVOID HITTING OVERHEAD POWER LINES. IT'S COSTLY.
Call 811
 1-800-642-2444

Call before you Dig
 AVOID HITTING OVERHEAD POWER LINES. IT'S COSTLY.
CALL BEFORE YOU DO OVERHEAD
 1-702-227-2929

BASIS OF BEARINGS
 NORTH 01°33'02" WEST, BEING THE BEARING OF THE WEST LINE OF SECTION 22, TOWNSHIP 20 SOUTH, RANGE 59 EAST, M.D.M., CITY OF LAS VEGAS, CLARK COUNTY, NEVADA, AS SHOWN BY MAP THEREOF ON FILE IN THE CLARK COUNTY RECORDER'S OFFICE IN BOOK 186, PAGE 15 OF PLATS.

BENCHMARK
 CITY OF LAS VEGAS BENCHMARK NO. 7LV0927E4
 A RIVET AND PLATE IN THE TOP OF CURB AT THE SOUTHEAST CORNER OF FAR HILLS AVE AND DESERT FOOTHILLS DR.
 ELEVATION = 1,016.62 METERS (NAV'D'88 v.2008)
 ELEVATION = 3335.36 US SURVEY FEET (NAV'D'88 v.2008)

SIGHT VISIBILITY ZONE
 NO WALLS, FENCES, SHRUBS, UTILITY APPURTENANCES OR ANY OTHER OBJECT, OTHER THAN TRAFFIC CONTROL DEVICES, FIRE HYDRANTS, TREES, AND STREET LIGHT POLES, MAY BE CONSTRUCTED OR INSTALLED WITHIN THE SIGHT VISIBILITY ZONE UNLESS SAID OBJECT IS MAINTAINED AT LESS THAN 24 INCHES IN HEIGHT, MEASURED FROM TOP OF CURB, OR WHERE NO CURB EXISTS, A HEIGHT OF 27 INCHES MEASURED FROM THE TOP OF ADJACENT ASPHALT, GRAVEL OR PAVEMENT STREET SURFACE. THIS RESTRICTION EXTENDS ALONG THE SIGHT VISIBILITY LINE THROUGH LANDSCAPED MEDIANS.

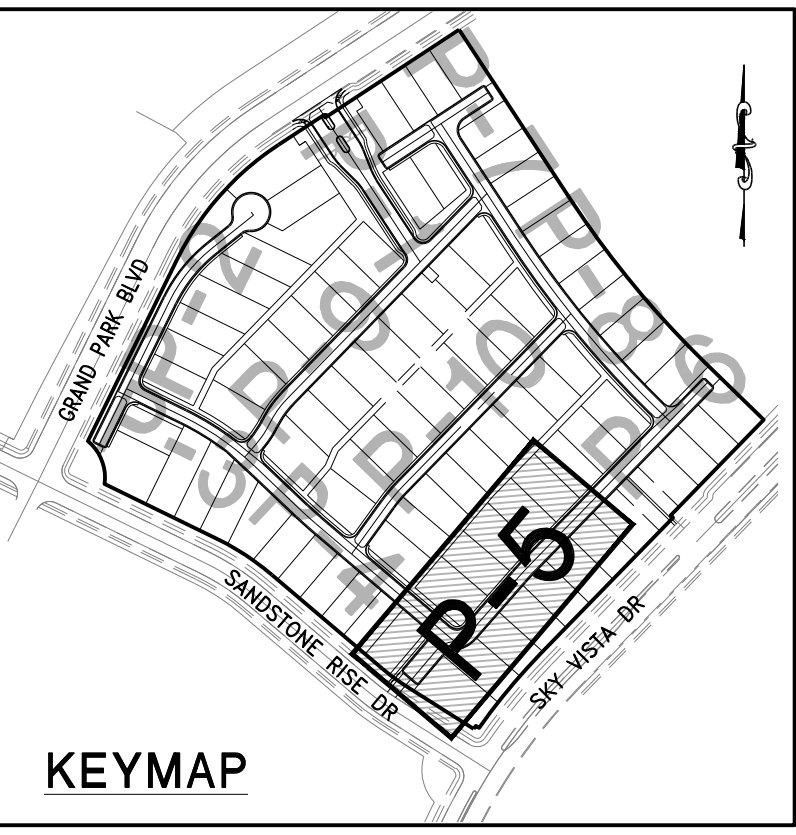
- CONSTRUCTION NOTES**
- CONSTRUCT 10" RCP PER DETAIL 1 THRU 7 ON SHEET D-1, DETAIL 21 ON SHEET D-2 AND DETAIL 56 ON SHEET D-3
 - CONSTRUCT "L" TYPE CURB AND GUTTER PER CCAUSD #216
 - CONSTRUCT 30" ROLL CURB PER SUMMERLIN IMPROVEMENT STD DWG #5-48
 - CONSTRUCT 5" CURB TRANSITION FROM 24" "L" TYPE CURB AND GUTTER TO 30" ROLL CURB PER DETAIL 40 ON SHEET D-3
 - CONSTRUCT SIDEWALK RAMPS USING ARMOR TILE TRUNCATED DOMES OR EQUIVALENT PER CCAUSD #235 (CASE I) SEE PLAN AND PROFILE SHEET CURVE TABLES FOR "A" AND "B" DIMENSIONS
 - CONSTRUCT SIDEWALK RAMPS USING ARMOR TILE TRUNCATED DOMES OR EQUIVALENT PER SUMMERLIN IMPROVEMENT STD DWG #5-75 SEE PLAN AND PROFILE SHEET CURVE TABLES FOR "A" AND "B" DIMENSIONS
 - CALL BOX
 - CONSTRUCT PEDESTRIAN ACCESS GATE (SAME SIZE AS SIDEWALK)
 - CONSTRUCT STRUCTURAL COLLAR PER DETAIL 49 SHEET D-3
 - CONSTRUCT 5" SIDEWALK PER CCAUSD #234 (5" THICK WHEN ADJACENT TO ROLL CURB)
 - CONSTRUCT "A" TYPE ISLAND CURB PER CCAUSD #219
 - CONSTRUCT PAVERS PER DETAIL 45 ON SHEET D-3
 - CONSTRUCT 6" CROSS GUTTER PER SUMMERLIN IMPROVEMENT STD DWG #5-64
 - CONSTRUCT ELECTRONICALLY CONTROLLED ACCESS GATES
 - EX SIDEWALK TO BE REMOVED
 - EX "L" CURB AND GUTTER TO BE REMOVED
 - EX SIDEWALK TO BE PROTECTED AND REMAIN IN PLACE
 - CONSTRUCT 5" TYPE CM2 DROP INLET PER CCAUSD #412.1 WITH STORM WATER INLET STAMP PER CCAUSD #421
 - CONSTRUCT 10" TYPE CM2 DROP INLET PER CCAUSD #412.1 WITH STORM WATER INLET STAMP PER CCAUSD #421
 - CONSTRUCT 20" TYPE CM2 DROP INLET PER CCAUSD #412.1 WITH STORM WATER INLET STAMP PER CCAUSD #421
 - CONSTRUCT SIDEWALK RAMP PER DETAIL 44 ON SHEET D-3
 - CONSTRUCT 8" HIGH WROUGHT IRON FENCE AND/OR GATES PER CCAUSD 423.51 SHEET D OF 3
 - INSTALL DOUBLE 15" LVVWD ACCESS GATES
 - STORM DRAIN CAP PER DETAIL 50 SHEET D-3
 - EX "A" TYPE ISLAND MEDIAN TO BE REMOVED
 - CONSTRUCT 7.5" TYPE CM2 DROP INLET PER CCAUSD #412.1 WITH STORM WATER INLET STAMP PER CCAUSD #421
 - CONSTRUCT 10" TYPE CM2 DROP INLET PER CCAUSD #412.1 WITH STORM WATER INLET STAMP PER CCAUSD #421
 - CONSTRUCT 17.5" TYPE CM2 DROP INLET PER CCAUSD #412.1 WITH STORM WATER INLET STAMP PER CCAUSD #421
 - CONSTRUCT STRUCTURAL PIPE TO PIPE COLLAR PER DETAIL 43
 - INSTALL AREA DRAIN PER DETAIL 57, 58, AND 59 ON SHEET D-1

SEWER CONSTRUCTION NOTES

- INSTALL 48" STANDARD MANHOLE WITH WATERTIGHT JOINTS (PER DCSWCS STD. NO. SD-1, SD-3, SD-4, SD-5) WITH SINGLE 24" LID
- (TYP) INSTALL 4" SEWER LATERAL (PER DCSWCS STD NO. SD-17, SD-20, SD-21, SD-23 & SD-24)
- TYPICAL LOCATION FOR SEWER LATERAL AT WATER MAIN CROSSING. ALL PVC SEWER LATERALS MUST MAINTAIN 18" VERTICAL CLEARANCE BELOW WATER MAIN AT CROSSINGS.
- REMOVE CAP AND CONNECT TO EX SEWER
- INSTALL 48" STANDARD MANHOLE WITH WATERTIGHT JOINTS (PER DCSWCS STD. NO. SD-1, SD-3, SD-4, & SD-5) WITH CORROSION PROTECTION PER DCSWCS 3.16.8, WITH SINGLE 24" LID.

CURVE TABLE

CURVE #	DELTA	RADIUS	LENGTH	TANGENT	"A"	"B"
C20	53°37'37"	20.00'	18.72'	10.11'	4.5'	N/A
C21	90°00'00"	5.00'	7.85'	5.00'		
C22	90°00'00"	5.00'	7.85'	5.00'		
C23	44°53'30"	32.59'	25.54'	13.47'		
C24	43°59'24"	68.00'	52.21'	27.47'		
C25	2°58'08"	582.00'	30.16'	15.08'		
C52	89°05'34"	20.00'	31.10'	19.69'	12.0'	4.5'
C53	2°58'08"	622.00'	32.23'	16.12'		



- LVVWD HIGH PRESSURE NOTES**
- ENTIRE PROJECT IS OVER 100 PSI STATIC.
 - ALL WATER PIPELINES TO BE RATED 250 PSI MINIMUM.
 - ALL WATER JOINTS MECHANICALLY RESTRAINED PER UDACS SECTION 2.15.
 - WATER MAINS TO BE TESTED AT 225 PSI.

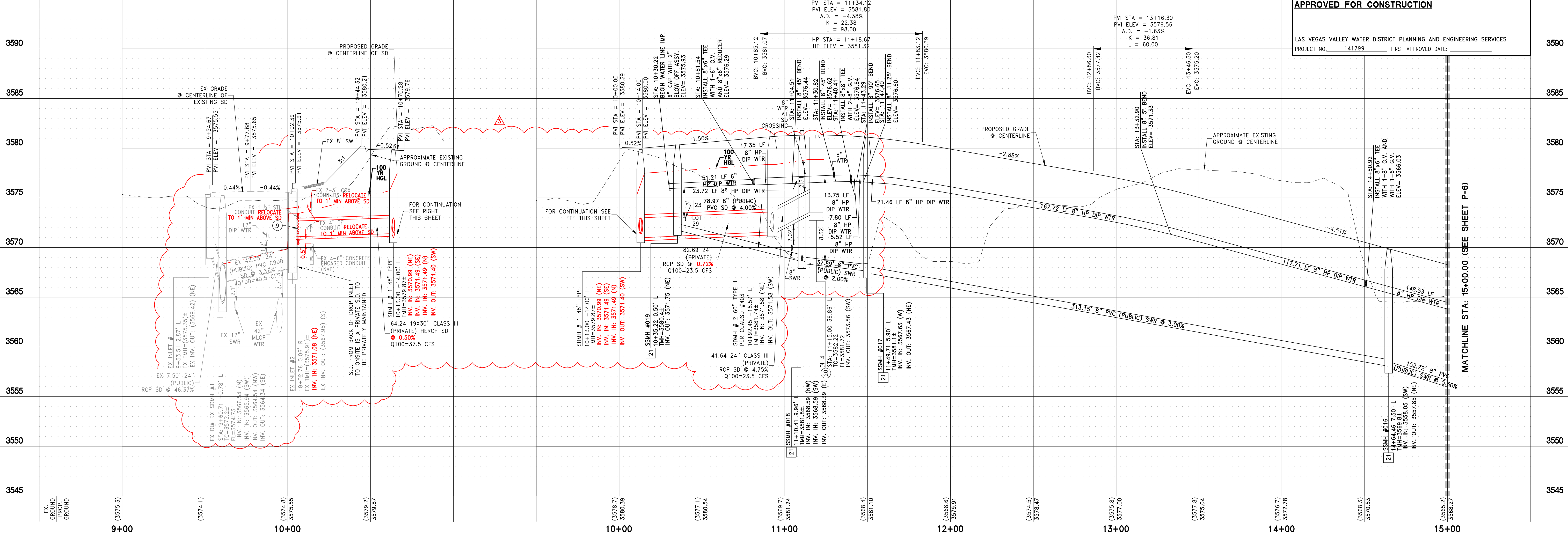
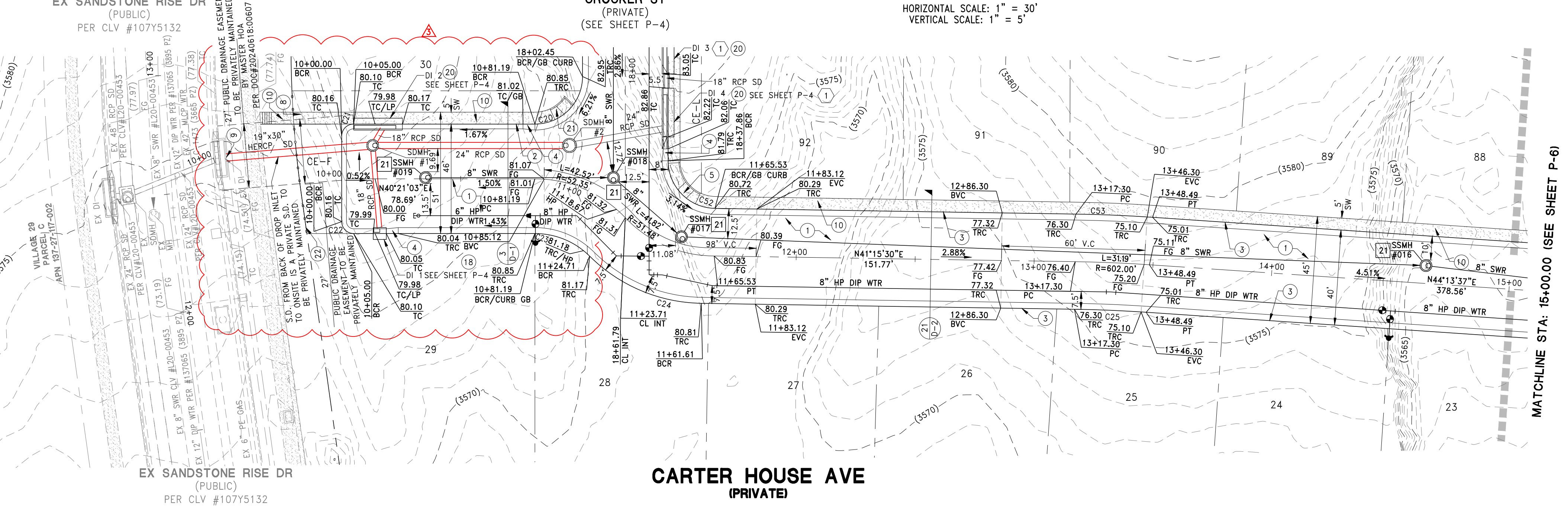
ALL SEWER/STORM DRAIN CROSSING WATER LINES MUST COMPLY WITH UDACS SECTION 2.22.

DEPTH OF COVER DURING CONSTRUCTION
 MAINTAIN MINIMUM TWENTY-FOUR (24) INCH COVER PER UDACS SECTION 2.08.04. GRADING MUST BE COMPLETED PRIOR TO WATERLINE INSTALLATION.

WATER MAIN JOINT DEFLECTION, PER UDACS 2.07.01 AND 2.07.03.
 NOTE:
 INSTALL PIPELINE MARKER BALLS, PER UDACS PLATE NO. 15

SEWER CONNECTION NOTE
 THAT ONE OR MORE SEGMENTS OF THE DOWNSIDE SEWER SYSTEM THAT WILL SERVE THIS PROJECT HAS NOT BEEN COMPLETED AND/OR ACCEPTED FOR MAINTENANCE BY THE CITY OF LAS VEGAS. ANY WORK DONE ON THIS PROJECT PRIOR TO THE COMPLETION AND/OR ACCEPTANCE OF THE DOWNSIDE SEWER SYSTEM(S) SHALL BE DONE AT THE DEVELOPER'S OWN RISK. THE CITY OF LAS VEGAS RESERVES THE RIGHT TO PREVENT THE PHYSICAL CONNECTION OF THIS PROJECT INTO THE DOWNSIDE SEWER SYSTEM UNTIL ALL SEGMENTS HAVE BEEN COMPLETED AND ACCEPTED FOR MAINTENANCE, OR UNTIL SUCH TIME AS THEY ARE DEEMED AVAILABLE FOR SERVICE.

DROP INLET NOTE:
 (1) WHERE TO FOOT PARALLEL SEPARATION FROM WATER MAIN IS NOT PRACTICABLE SEPARATION SHOULD NEVER BE LESS THAN 5-FOOT AND DROP INLET SHOULD BE CONSTRUCTED AS CAST-IN-PLACE MONOLITHIC POUR WITH WATERSTOP BETWEEN SLAB AND WALLS. BASE, WALL AND TOP TO BE CONSTRUCTED WITH WATERSTOP, CENTER BULB, OR FLAT STRIP. (VINYLEX, GREENSTREAK PLASTIC PRODUCTS OR APPROVED EQUAL)



APPROVED FOR CONSTRUCTION
 LAS VEGAS VALLEY WATER DISTRICT PLANNING AND ENGINEERING SERVICES
 PROJECT NO. 141799 FIRST APPROVED DATE:

DATE: 10/31/2024
 HORIZ. SCALE: 1"=50'
 VERT. SCALE: 1"=5'
 DRAWN BY: GS/SR
 DESIGNED BY: SC
 CHECKED BY: CZ
 APPROVED BY: CZ
 PROJECT #: 3185.0003

1885 FESTIVAL PLAZA DR SUITE 200 LAS VEGAS, NV 89135
 TEL: 702-735-8888 FAX: 702-735-8889

taylor morrison
RCI ENGINEERING
 500 SOUTH HANCOCK DRIVE, SUITE 17 LAS VEGAS, NV 89106
 ENGINEER: CHRISTOPHER R. ZRINYI
 CIVIL ENGINEER LICENSE NO. 3185.0003

IMPROVEMENT PLANS FOR ASHLAND AT SUMMERLIN VILLAGE 25 (PARCELS H AND I) A SINGLE FAMILY RESIDENTIAL SUBDIVISION PLAN AND PROFILE CARTER HOUSE AVE STA:10+00.00-15+00.00 CITY OF LAS VEGAS, NEVADA

DATE: 10/31/2024
 DRAWING NUMBER: P-5
 SHEET 29 OF 44
 CLV PROJECT # L24-00110