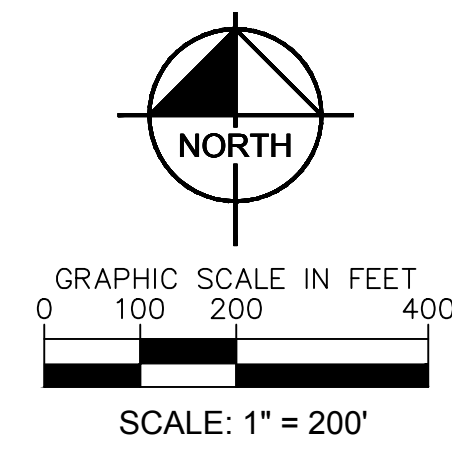
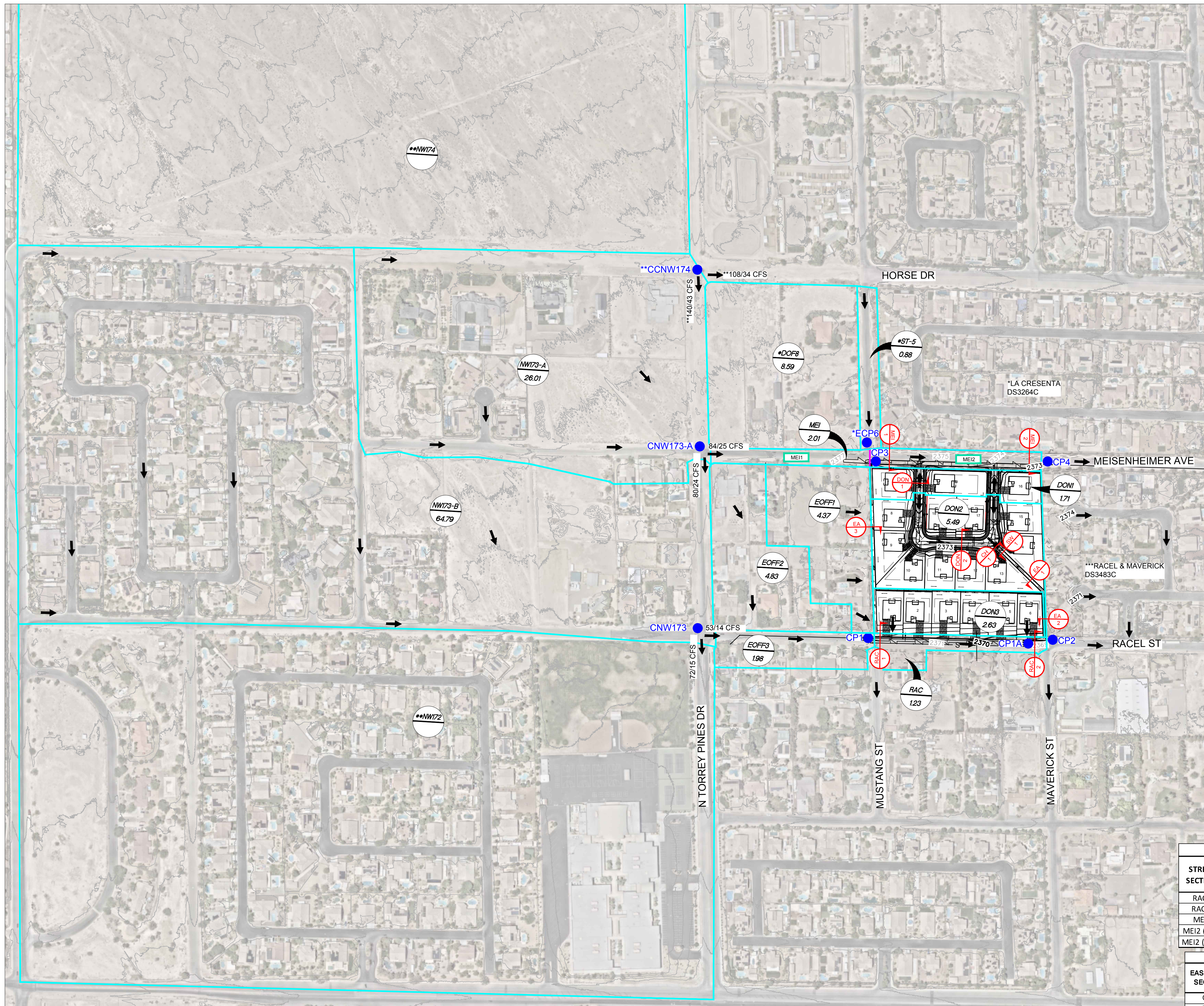


Plotted By: Achhami, Abhusan. Sheet Set: King Layout: DEV-1, October 15, 2024. 02:56:35pm. K:\LAV_Civil\291400040 - Race & Maverick Reports\DRAINAGE\02-ADD\Figures\CAD\PRO_Map_ADD.dwg
 This document, together with the concepts and designs presented herein, is intended only for the specific purpose and client for which it was prepared. Reuse of and improper reliance on this document without written authorization and adaptation by Kimley-Horn and Associates, Inc. shall be without liability to Kimley-Horn and Associates, Inc.



- LEGEND**
- XX BASIN ID
 - XX PRORATED BASIN BOUNDARY ID
 - BASIN BOUNDARY
 - PRORATED BASIN BOUNDARY
 - ➔ FLOW ARROW
 - ➔ 100/10CFS FLOW ARROW WITH FLOW RATES
 - CPX CONCENTRATION POINT
 - XX SECTION ID

PROPOSED FLOW SUMMARY TABLE

BASIN ID / COMB. PT.	BASIN AREA (ac)	100-YR FLOW (cfs)	10-YR FLOW (cfs)
**NW174	N/A	226	76
**CCNW174	N/A	248	70
**DNW184	N/A	108	31
**DCCNW174	N/A	140	39
**NW173-A	26.01	39	14
CNW173-A	N/A	164	48
DIVMEI	N/A	84	25
DCNW173-A	N/A	80	24
**NW173-B	64.79	57	14
CNW173-B	N/A	133	35
DTNW173	N/A	8	8
**DTCNW173	N/A	125	27
**DNW183	N/A	53	11
**DCNW173	N/A	72	15
**NW172	N/A	105	33
**CNW172	N/A	168	40
**DTDNW183	N/A	53	11
EOFF1	4.37	7	2
EOFF2	4.83	7	2
EOFF3	1.98	4	2
CP1	N/A	63	14
DON3	2.63	4	1
RAC	1.23	3	2
CP1A	N/A	68	16
DON2	5.49	9	3
CP2	N/A	74	18
*DOF8	8.59	12	4
*ST-5	0.88	2	1
*ECP6	N/A	14	4
MEI	2.01	6	3
DMEI2	N/A	3	1
DMEI1	N/A	3	2
CP3	N/A	92	28
DON1	1.71	3	1
CP4	N/A	95	28

*Referenced from La CreSENTA Study (DS3264)
 **Referenced/Revised from Neighborhood Study

DEVELOPED PRORATED FLOW SUMMARY TABLE

EXISTING BASINS					
BASIN ID	100-YR FLOW (cfs)	10-YR FLOW (cfs)	AREA (acres)	Q100 (CFS/ACRE)	Q10 (CFS/ACRE)
MEI	6	3	2.01	2.99	1.49

PRORATED DEVELOPED BASINS					
BASIN ID	100-YR FLOW (cfs)	10-YR FLOW (cfs)	AREA (acres)	Q100 (CFS/ACRE)	Q10 (CFS/ACRE)
MEI-1	2.5	1.5	0.88	2.99	1.49
MEI-2	3.5	1.5	1.13	2.99	1.49
TOTAL	6.0	3.0	2.01	NA	NA

ONSITE HYDRAULIC SECTIONS

SECTION	TRIBUTARY BASINS	CHANNEL SLOPE %	Q ₁₀₀ (cfs)	FLOW DEPTH (ft)	VELOCITY (ft/s)	D*V (ft ² /s)
DON1 (Min)	DON1	1.38	3.0	0.29	2.23	0.65
DON1 (Max)	DON1	1.69	3.0	0.28	2.42	0.68
DON2 (Min)	DON2	0.40	9.0	0.46	1.53	0.70
DON2 (Max)	DON2	1.30	9.0	0.38	2.70	1.03

STREET HYDRAULIC SECTIONS

STREET SECTION	TRIBUTARY BASINS	SLOPE %	Q ₁₀₀ (cfs)	FLOW DEPTH (ft)	VELOCITY (ft/s)	D*V (ft ² /s)	Q ₁₀ (cfs)	FLOW DEPTH (ft)	VELOCITY (ft/s)	D*V (ft ² /s)	DRY LANE
RAC1	CP1	0.47	66.0	0.77	2.60	2.00	18.0	0.55	1.75	0.96	-
RAC2	CP1A	0.53	68.0	0.77	2.78	2.14	16.0	0.52	1.77	0.92	-
MEI1	CP3	0.40	92.0	0.91	3.03	2.76	28.0	0.64	1.97	1.26	-
MEI2 (Min)	CP4	0.42	95.0	0.91	3.11	2.83	28.0	0.63	2.00	1.26	-
MEI2 (Max)	CP4	0.69	95.0	0.84	3.62	3.04	28.0	0.59	2.39	1.41	-

EASEMENT SECTIONS

EASEMENT SECTION	TRIBUTARY BASINS	CHANNEL SLOPE %	Q ₁₀₀ (cfs)	FLOW DEPTH (ft)	VELOCITY (ft/s)	D*V (ft ² /s)	TYPE	BOTTOM WIDTH (ft)	SIDE SLOPES
CH1	DON2	1.00	9.0	0.24	3.93	0.94	RECT	11	N/A
SW1	1/3DON2	0.62	3.0	0.39	3.86	1.51	RECT	2	N/A
EA1	DON2	0.62	9.0	0.29	3.52	1.02	RECT	10	N/A
EA2	DON2	0.62	9.0	0.30	3.61	1.08	RECT	9.33	N/A
EA3	EOFF1	0.66	7.0	0.25	1.93	0.48	RECT	10	N/A

NOTES:
 **REFERENCED FROM LA CRESENTA STUDY (DS3264C)
 **REFERENCED FROM NORTHWEST NEIGHBORHOOD STUDY
 ***REFERENCED FROM RACEL & MAVERICK STUDY (DS3483C)

© 2024 KIMLEY-HORN AND ASSOCIATES, INC.
 6671 LAS VEGAS BOULEVARD S., SUITE 320
 LAS VEGAS, NV 89119
 WWW.KIMLEY-HORN.COM
 PHONE: 702-862-3600

OVERALL PROPOSED CONDITIONS BASIN MAP

RACEL & MAVERICK
 PREPARED FOR
 RICHMOND AMERICAN

NEVADA
 CITY OF LAS VEGAS

PRO-1

NO. DATE BY

REVISIONS