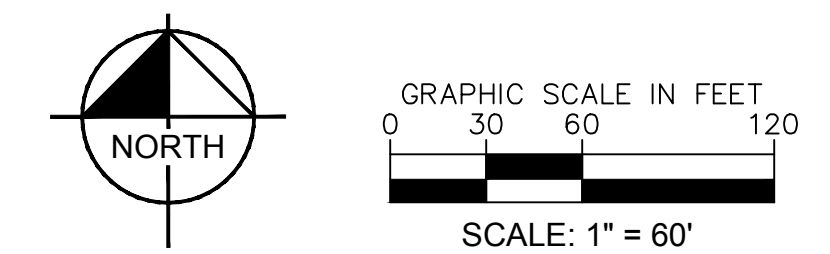
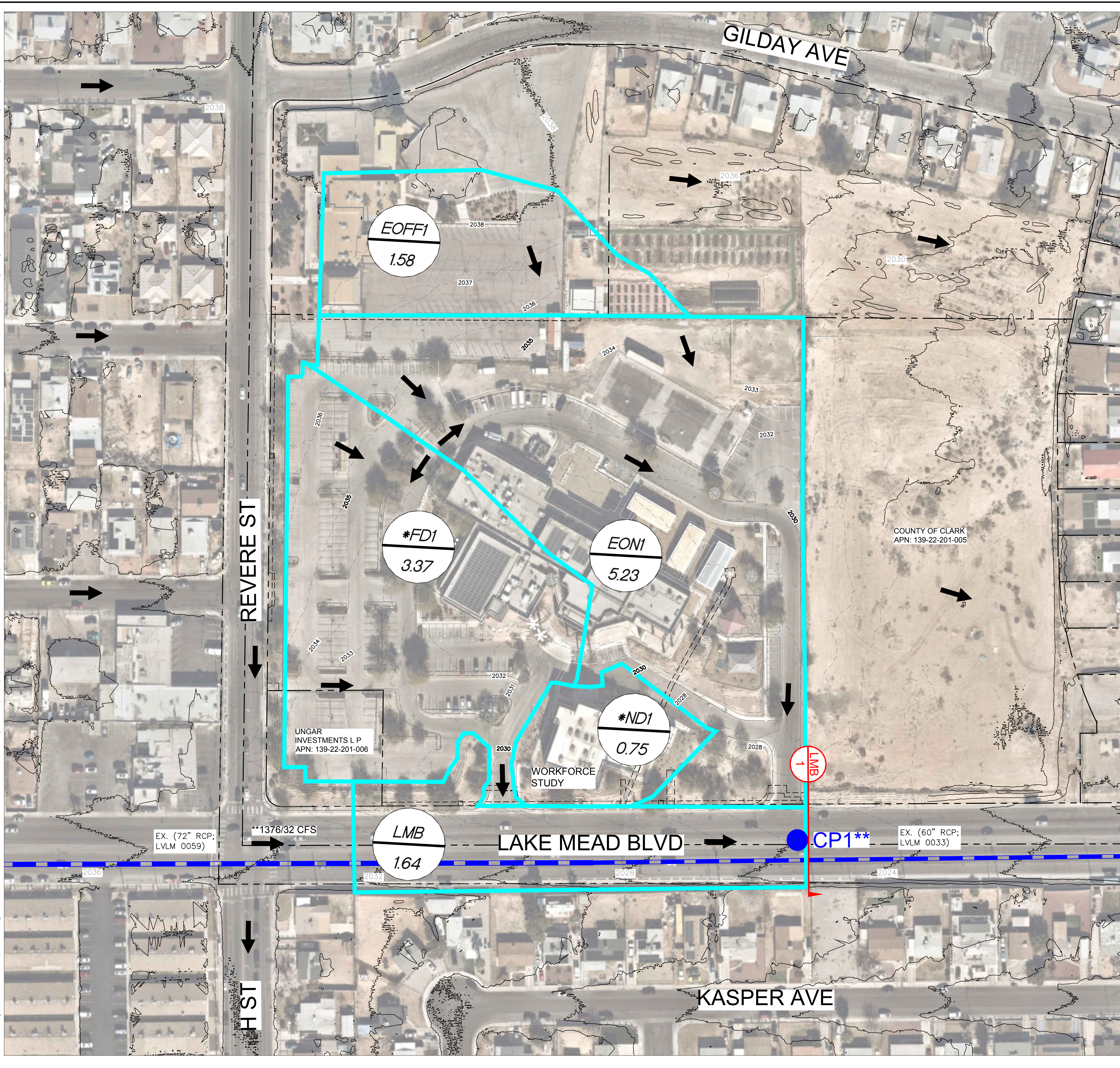


This document, together with the concepts and designs presented herein, is intended only for the specific purpose and client for which it was prepared. Reuse of and improper reliance on this document without written authorization and adaptation by Kimley-Horn and Associates, Inc. shall be without liability to Kimley-Horn and Associates, Inc.



LEGEND

- XX BASIN ID
- ACRES AREA AC
- PRORATED BASIN BOUNDARY ID
- BASIN BOUNDARY
- PRORATED BASIN BOUNDARY
- ➔ FLOW ARROW
- ➔ 100/10CF5 FLOW ARROW WITH FLOW RATES
- CPX CONCENTRATION POINT
- X
XX SECTION ID
- EXISTING CCRFCD FACILITY

EXISTING FLOW SUMMARY TABLE

BASIN ID/ COMB. PT.	BASIN AREA	100-YR FLOW	10-YR FLOW
	(ac)	(cfs)	(cfs)
EOFF1	1.58	5	3
EON1	5.23	14	7
*FD1	3.37	12	7
*ND1	0.75	2	1
LMB	1.64	6	3
CP1**	-	^1,415 (39)	^52 (20)

*Referenced from Workforce Study (CNLV #57133)
 **Includes flow referenced from Neighborhood Study
 ^ Reference flow added
 () HEC-1 Node

STREET HYDRAULIC SECTIONS

STREET SECTION	TRIBUTARY BASINS	SLOPE %	Q ₁₀₀	FLOW DEPTH	VELOCITY	D ^v	Q ₁₀	FLOW DEPTH	VELOCITY	D ^v	DRY LANE
			(cfs)	(ft)	(ft/s)	(ft)	(cfs)	(ft)	(ft/s)	(ft)	
LMB (EX)	CP1**	1.20	1,415.0	1.79	11.66	20.87	53.0	0.64	3.88	2.48	39.0

**Includes flow referenced from Neighborhood Study

Kimley-Horn

© 2024 KIMLEY-HORN AND ASSOCIATES, INC.
 6671 LAS VEGAS BOULEVARD S., SUITE 320
 LAS VEGAS, NV 89119
 WWW.KIMLEY-HORN.COM
 PHONE: 702-862-3600

192468000
 DATE: 9/4/2024
 SCALE: AS SHOWN
 DESIGNED BY: AA
 DRAWN BY: JE
 CHECKED BY: RRD
 PROJECT: KHA PROJECT
 DATE: 9/4/2024

NO. _____

REVISIONS _____

DATE _____

BY _____

EXISTING CONDITIONS BASIN MAP

CULINARY ACADEMY OF LAS VEGAS EXPANSION
 PREPARED FOR: BLOC9, LLC

CITY OF NORTH LAS VEGAS
 NEVADA

EX