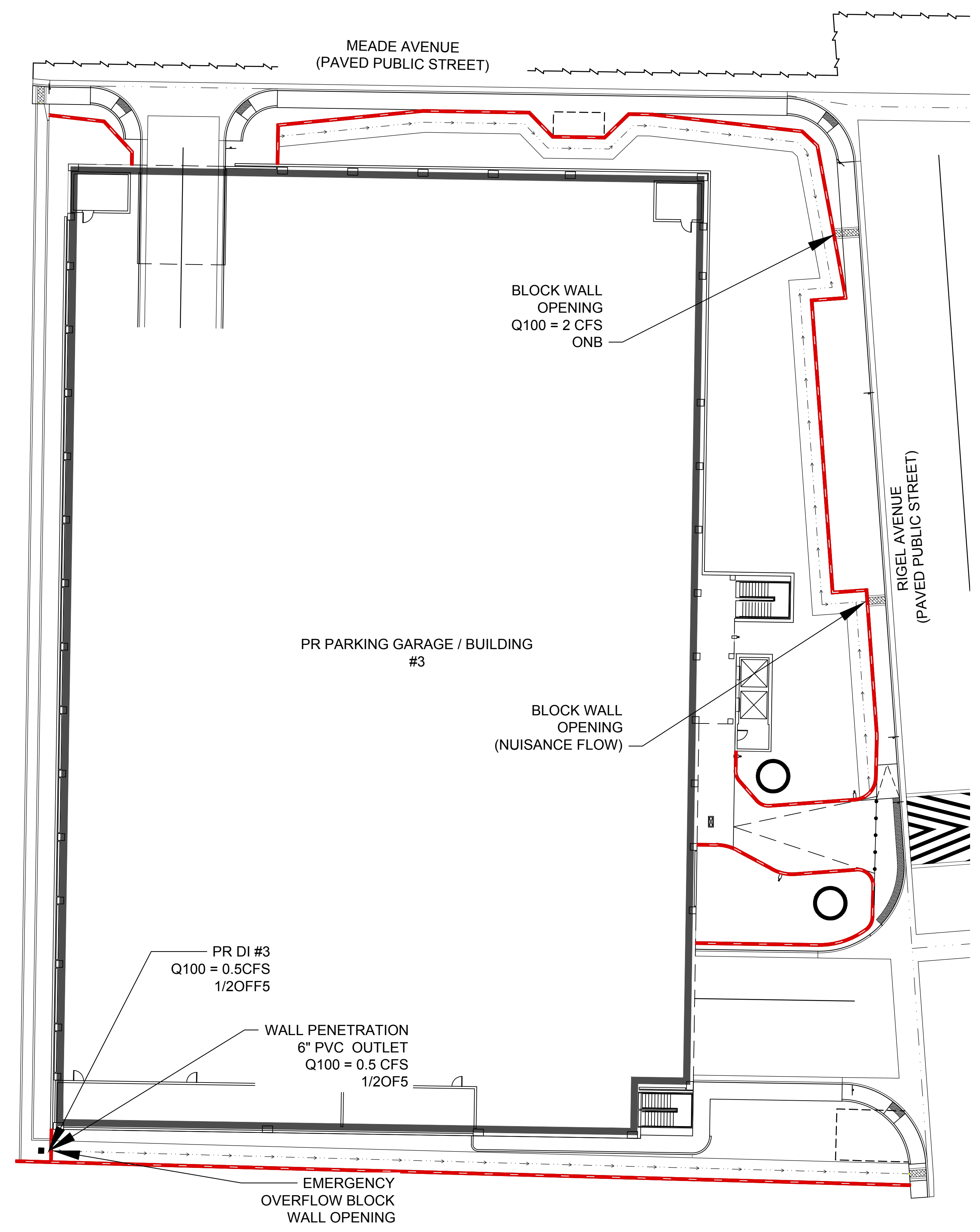
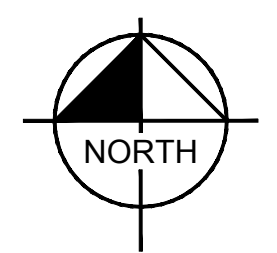
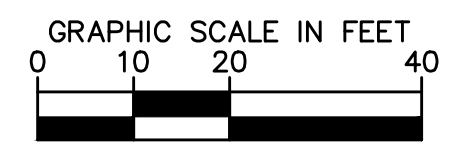


Plotted By: Schofield, Sean - Sheet Set: 092965012 (02) - Layout: FAC-2 - September 04, 2024 09:08:40am - K:\LAV_Civil\092965012 - Area 15 District 2 (Fisher Brothers)\Reports\DRAINAGE\06_UP2\06_UP2_Vegras\CAD\FAC_UP2.dwg
 This document, together with the concepts and designs presented herein, is intended only for the specific purpose and client for which it was prepared. Reuse of and improper reliance on this document without written authorization and adaptation by Kimley-Horn and Associates, Inc. shall be without liability to Kimley-Horn and Associates, Inc.

VIEWPORT 3



DROP INLET SUMMARY TABLE							
DROP INLET ID	Tributary Basins	Q ₁₀₀	SLOPE	FLOW DEPTH	Q _{INT}	Q _{BYP}	DI TYPE
		(cfs)	(%)	(ft)	(cfs)	(cfs)	
DI#1	NUISANCE FLOW	<1	SUMP	0.00	0.0	0.0	JENSEN D12'X2'
DI#2	ONF	1.0	SUMP	0.20	1.0	0.0	JENSEN D12'X2'
DI#3	1/2OFF5	0.5	SUMP	0.13	0.5	0.0	JENSEN D12'X2'
DI#4	NUISANCE FLOW	<1	SUMP	0.00	0.0	0.0	JENSEN D12'X2'
DI#5	NUISANCE FLOW	<1	SUMP	0.00	0.0	0.0	JENSEN D12'X2'
DI#6	NUISANCE FLOW	<1	SUMP	0.00	0.0	0.0	ZURN 6" x 6"
DI#7	NUISANCE FLOW	<1	SUMP	0.00	0.0	0.0	ZURN 6" x 6"

LEGEND

- PROPOSED ONSITE TRENCH DRAIN
- PROPOSED TRENCH DRAIN FLOW DIRECTION
- PROPOSED STORM DRAIN AND FLOW DIRECTION
- PROPOSED WALL

No.	REVISIONS	DATE	BY

© 2024 KIMLEY-HORN AND ASSOCIATES, INC.
 6671 LAS VEGAS BOULEVARD S., SUITE 320, LAS VEGAS, NV 89119
 PHONE: 702-862-5600
 WWW.KIMLEY-HORN.COM

KHA PROJECT		DATE		SCALE		DESIGNED BY		DRAWN BY		CHECKED BY	
092965012	08/29/2024	10/17/2023	AS SHOWN	TEA	SS	RD					

**PARKING GARAGE
FACILITY MAP**

**AREA 15
DISTRICT 2**
 PREPARED FOR
FISHER BROTHERS LAS VEGAS, LLC
 CITY OF LAS VEGAS NEVADA