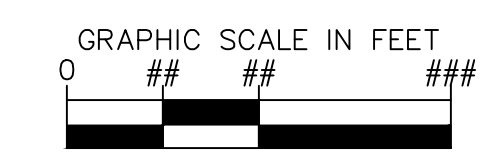
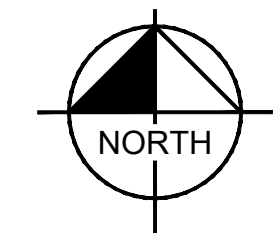
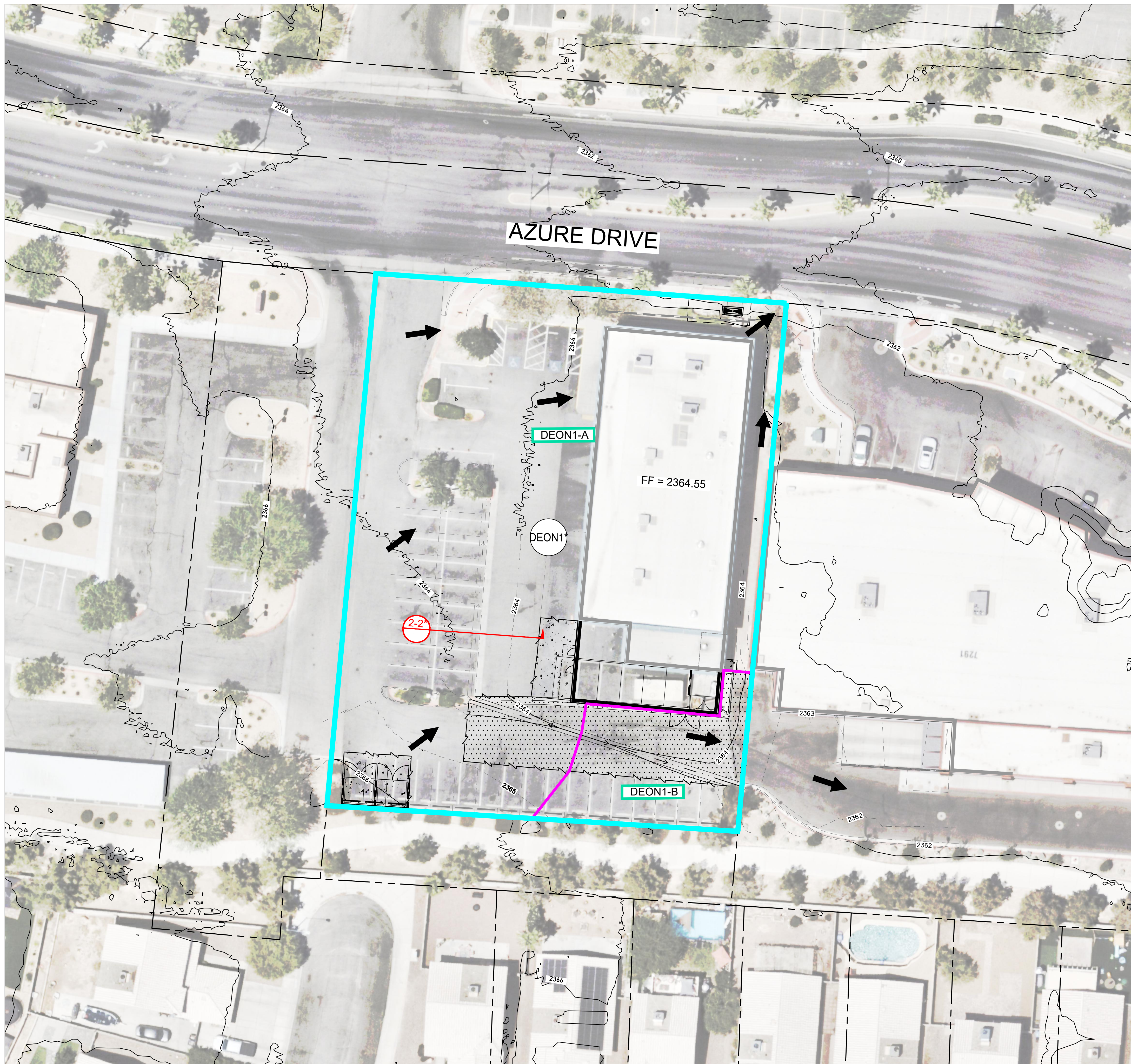


## **Appendix A – Documents & Figures**

- PRO: Onsite Proposed Condition Drainage Map

This document, together with the concepts and designs presented herein, is intended only for the specific purpose and client for which it was prepared. Reuse of and improper reliance on this document without written authorization and adaptation by Kimley-Horn and Associates, Inc. shall be without liability to Kimley-Horn and Associates, Inc.



**LEGEND**

- SITE BASIN ID
- XXX-X PRORATED BASIN ID
- BASIN BOUNDARY
- PRORATED BASIN BOUNDARY
- ➔ FLOW ARROW

Discount Tire Co. Store # - NVL - 11			
PROPOSED FLOW SUMMARY TABLE			
BASIN ID/ COMB. PT.	BASIN AREA (ac)	100-YR FLOW (cfs)	10-YR FLOW (cfs)
DEON1*	0.80	2	1

\*Referenced/Revised from Tenaya Village Discount Tire Study

PROPOSED CONDITION					
PRORATED FLOW SUMMARY					
Proposed Onsite					
SUBBASIN	Q <sub>100</sub> (cfs)	Q <sub>10</sub> (cfs)	AREA (ac)	Q <sub>100</sub> (cfs/acre)	Q <sub>10</sub> (cfs/acre)
DEON1*	2	1	0.80	2.50	1.25
Proposed Onsite Prorated Basins					
SUBBASIN	Q <sub>100</sub> (cfs)	Q <sub>10</sub> (cfs)	AREA (ac)	Q <sub>100</sub> (cfs/acre)	Q <sub>10</sub> (cfs/acre)
DEON1-A	2	1	0.72	2.50	1.25
DEON1-B	0	0	0.08	2.50	1.25
<b>TOTAL</b>	<b>2</b>	<b>1</b>	<b>0.80</b>	<b>NA</b>	<b>NA</b>

\*Referenced/Revised from Tenaya Village Discount Tire Study

PROPOSED ONSITE HYDRAULIC SECTIONS								
SECTION	TRIBUTARY BASINS	CHANNEL SLOPE	Q <sub>100</sub>	FLOW DEPTH	*FLOW LINE	*FLOW LINE + 2D	*FFE BLDG	BLDG PROTECTED?
SEC 2-2 PARKING AREA*	PT1*	%	(cfs)	(ft)	(ft)	(ft)	(ft)	YES
		0.58	11.0	0.32	63.80	64.44	64.55	

\*Referenced from Tenaya Village Discount Tire Study

DISCOUNT TIRE CO.  
STORE # - NVL - 11  
PREPARED FOR  
HALLE PROPERTIES LLC

ONSITE PROPOSED  
CONDITION  
BASIN MAP

KHA PROJECT  
092933009

DATE  
SEPTEMBER 9, 2024

SCALE  
AS SHOWN

DESIGNED BY  
CZ

DRAWN BY  
CZ

CHECKED BY  
MS

REVISIONS

No.	DATE	BY

© 2024 KIMLEY-HORN AND ASSOCIATES, INC.  
6671 LAS VEGAS BOULEVARD, S. SUITE 320, LAS VEGAS, NV 89119  
PHONE: 702-862-3600  
WWW.KIMLEY-HORN.COM

PRO