

# Supplement to Addendum to Technical Drainage Study For Helen Smith Elementary School Replacement

August 2024

**Prepared for:**

CCSD  
1180 Military Tribute Place  
Henderson, NV 89074

**Prepared by:**

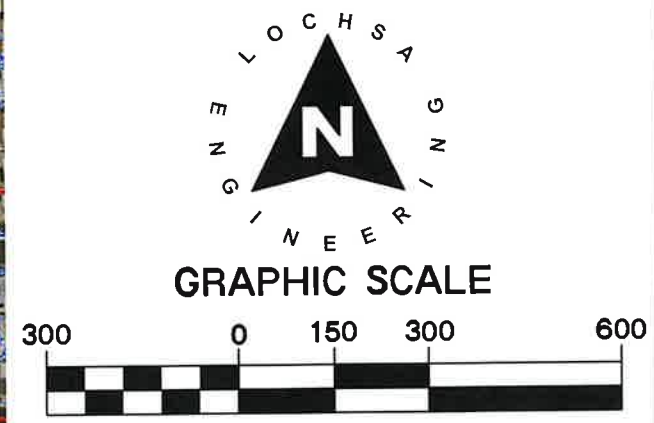
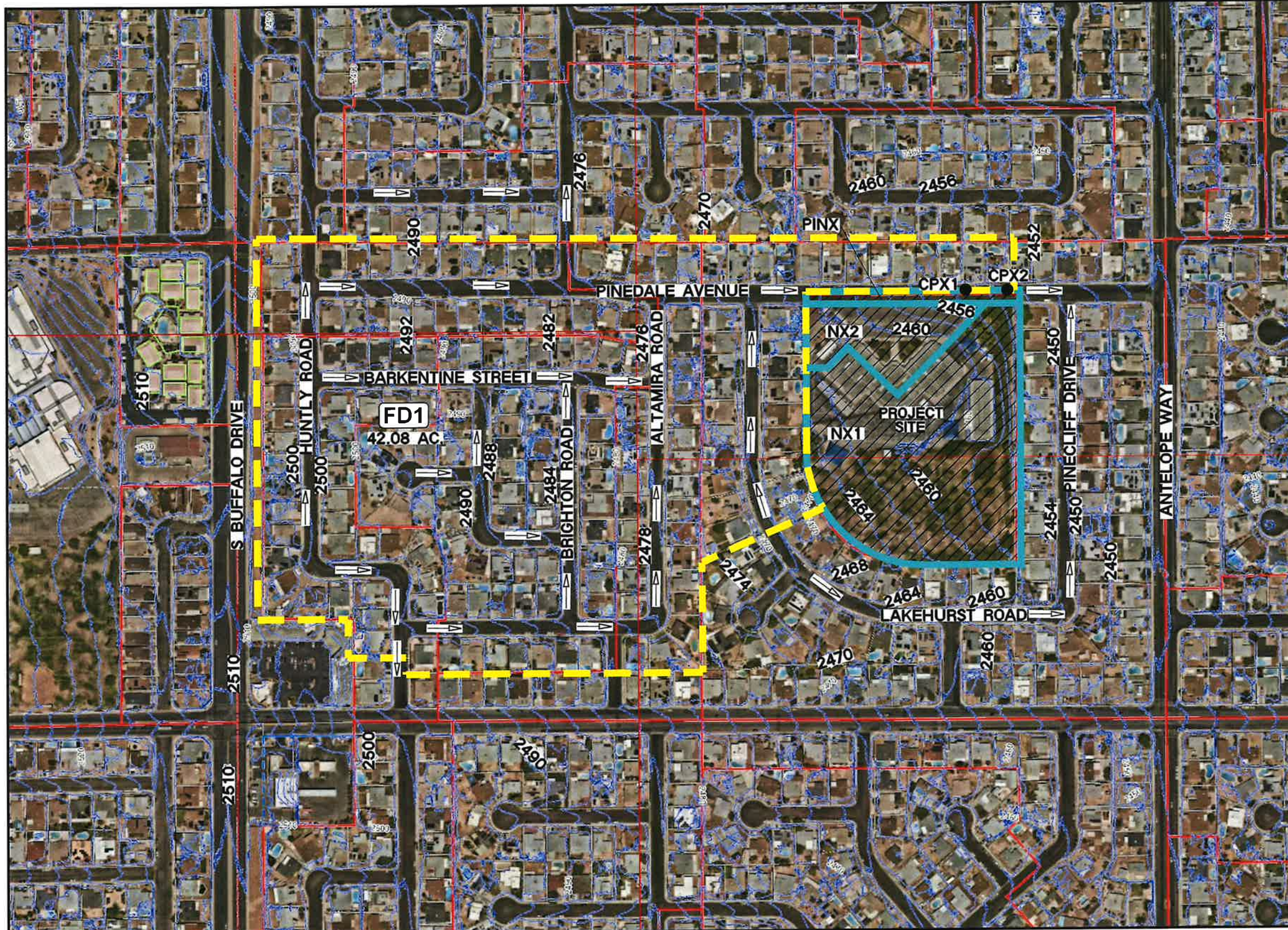
LOCHSA ENGINEERING  
6345 South Jones Boulevard, Suite 100  
Las Vegas, Nevada 89118  
(702) 365-9312



Lochsa Job # 231075

## Revised Offsite Basin Exhibits

---



( IN FEET )  
1 Inch = 300 ft.

DRAINAGE LEGEND	
<b>ND1</b>	DRAINAGE BASIN LABEL
●	CONCENTRATION POINT
●	COMBINATION POINT
—	ONSITE BASIN BOUNDARY
- - -	OFFSITE BASIN BOUNDARY
2 3	Q10 FLOW IN CFS (10 YR.) Q100 FLOW IN CFS (100 YR.)
→	BASIN FLOW DIRECTION

Peak Flow Summary  
Existing Condition

HEC-1 ID	Area (acres)	10-year Flow (cfs)	100-year Flow (cfs)
FD1	42.08	67	137
NX2	1.89	3	6
PINX	0.43	1	1
CPX1	-	71	145
NX1	7.78	10	21
CPX2	-	81	166

(FD1 + NX2 + PINX)

DRAWN BY: JD SCALE: 1"=300' FILE NAME: OFFSITE MAP.dwg

CHECKED BY: CB DATE: 7/25/24

**LOCHSA ENGINEERING**  
6345 SOUTH JONES BLVD., SUITE 100  
LAS VEGAS, NV 89118  
P: 702 365-9312, F: 702 365-9317

**LEGEND**

FOUND MONUMENTATION	⊕
CENTER LINE	—
ROW LINE	- - -
EASEMENT LINE	— · — · —
SECTION LINE	— · — · —
PROPERTY LINE	— · — · —
ADJACENT PROPERTY LINE	· · · · ·

**OFFSITE BASIN MAP  
(EXISTING CONDITION)**

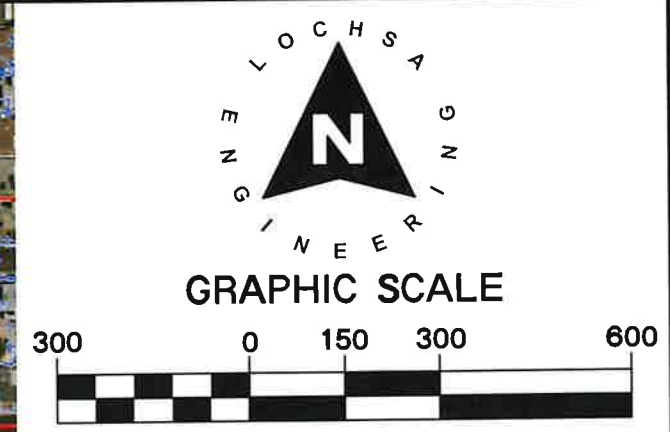
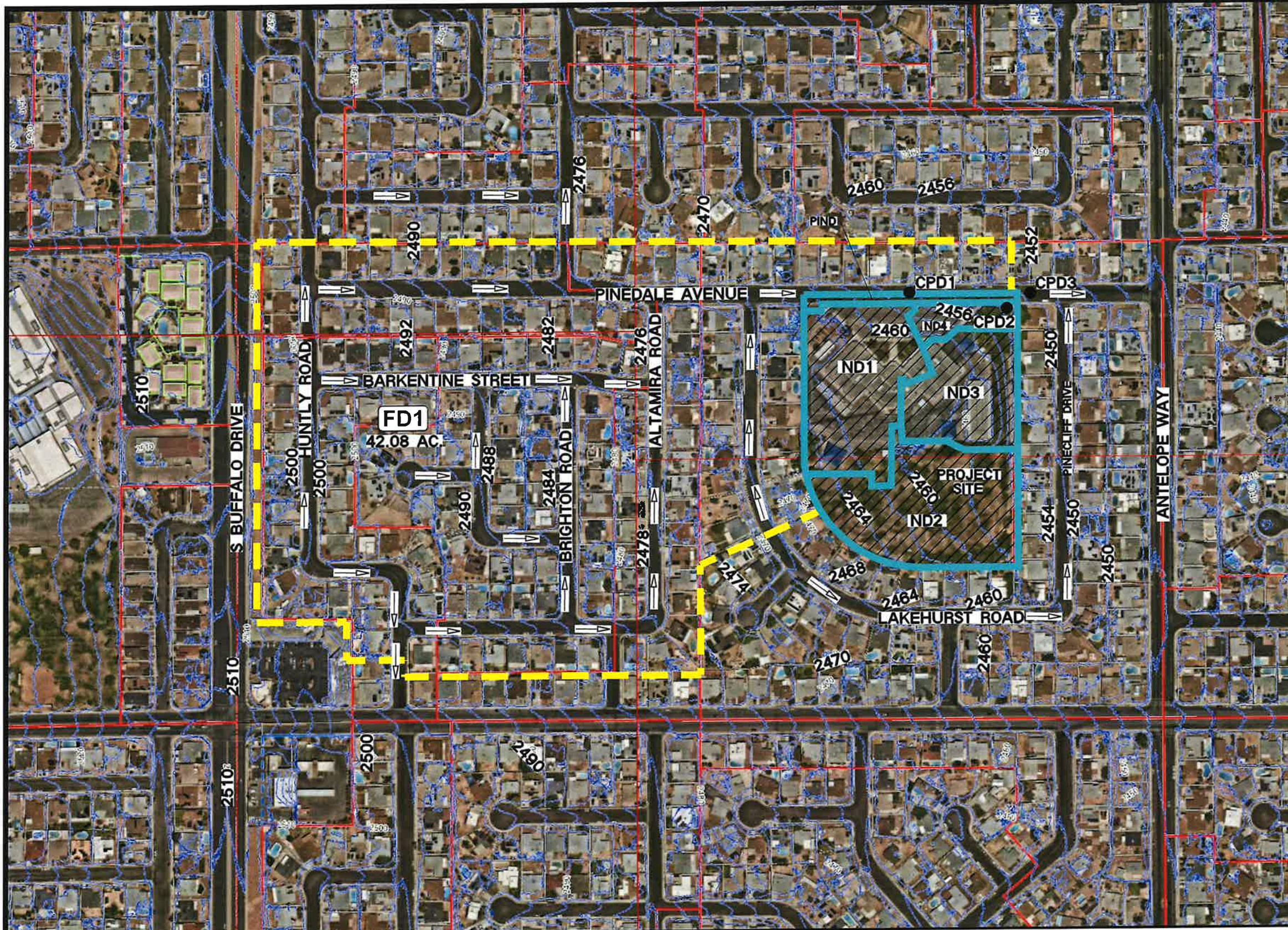
**HELEN SMITH ELEMENTARY SCHOOL  
REPLACEMENT**

PROJECT No.:  
231075

SHEET No.

**OFF1**

SHEET 1 OF 2



( IN FEET )  
1 Inch = 300 ft.

DRAINAGE LEGEND	
<b>ND1</b>	DRAINAGE BASIN LABEL
●	CONCENTRATION POINT
<b>CMD1</b>	COMBINATION POINT
	ONSITE BASIN BOUNDARY
	OFFSITE BASIN BOUNDARY
	Q10 FLOW IN CFS (10 YR.)
	Q100 FLOW IN CFS (100 YR.)
	BASIN FLOW DIRECTION

Peak Flow Summary  
Developed Conditions

HEC-1 ID	Area (acres)	10-year Flow	100-year Flow	
FD1	42.08	67	137	
ND1	3.11	5	9	
PIND	0.48	1	2	
CPD1	-	73	149	(FD1 + ND1 + PIND)
ND2	3.73	6	11	
ND3	2.20	4	7	
ND4	0.58	1	2	
CPD2	-	11	21	(ND2 + ND3 + ND4)
CPD3	-	84	169	(CPD1 + CPD2)

DRAWN BY: JD	SCALE: 1"=300'	FILE NAME: OFFSITE MAP 2.dwg
CHECKED BY: CB	DATE: 7/25/24	<b>LEGEND</b>
FOUND MONUMENTATION		
CENTER LINE _____		
ROW LINE _____		
EASEMENT LINE _____		
SECTION LINE _____		
PROPERTY LINE _____		
ADJACENT PROPERTY LINE _____		

**LOCHSA ENGINEERING**  
6345 SOUTH JONES BLVD., SUITE 100  
LAS VEGAS, NV 89118  
P: 702 365-9312, F: 702 365-9317

**OFFSITE BASIN MAP  
(DEVELOPED CONDITION)**

**HELEN SMITH ELEMENTARY SCHOOL  
REPLACEMENT**

PROJECT No.:  
231075

SHEET No.

**OFF2**

SHEET 2 OF 2