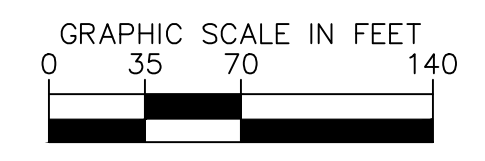
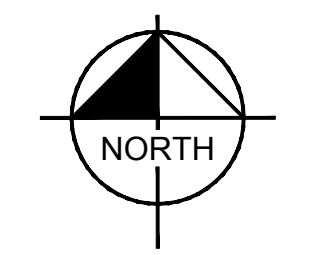
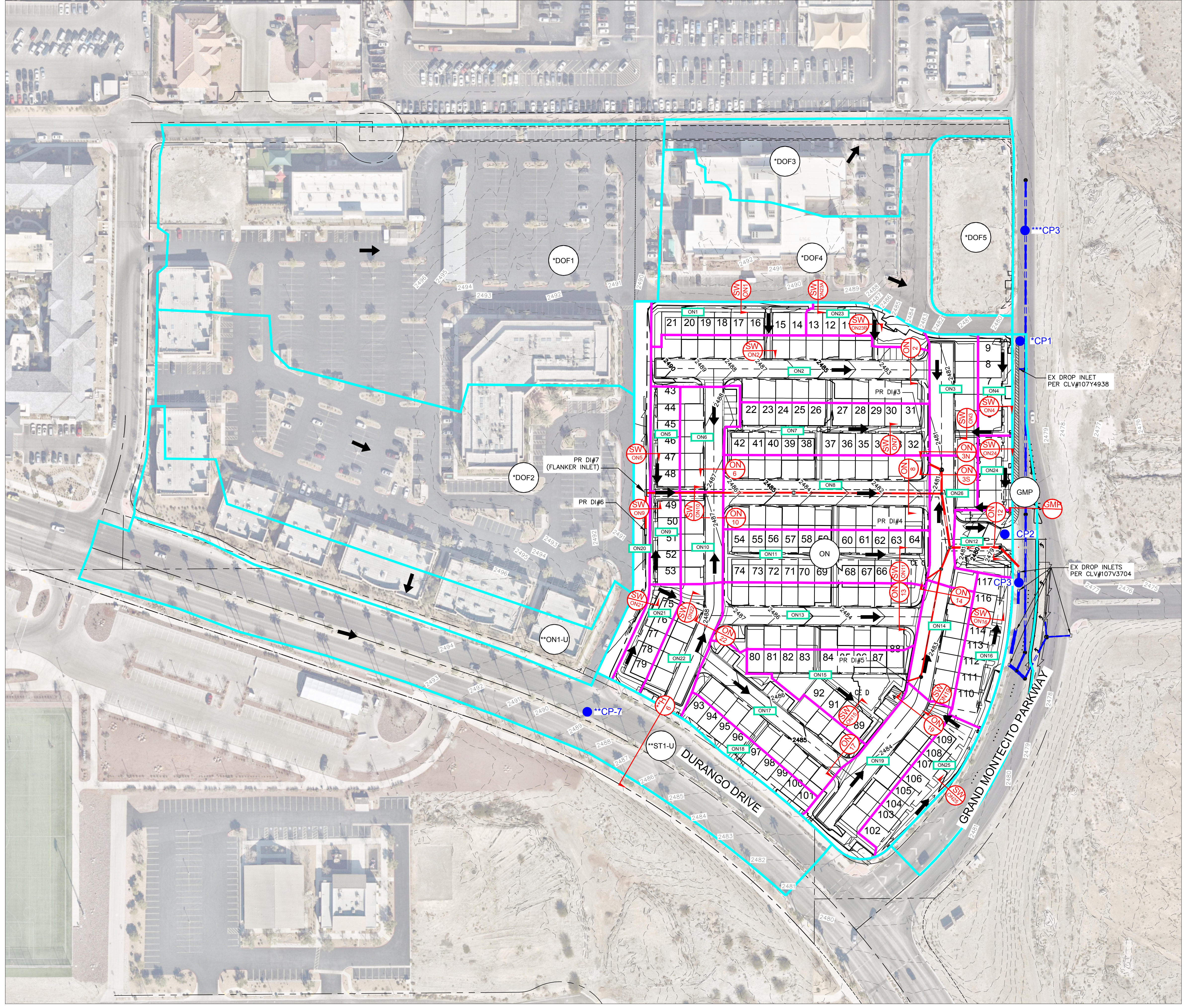


This document, together with the concepts and designs presented herein, is intended only for the specific purpose and client for which it was prepared. Reuse of and improper reliance on this document without written authorization and adaptation by Kimley-Horn and Associates, Inc. shall be without liability to Kimley-Horn and Associates, Inc.



LEGEND

- SITE BASIN ID
- XXX-X PRORATED BASIN ID
- BASIN BOUNDARY
- PRORATED BASIN BOUNDARY
- XX CFS 100/10YR CFS
- ➔ FLOW ARROW
- CPX CONCENTRATION POINT
- EXISTING STORM DRAIN
- PROPOSED STORM DRAIN
- XX
XX SECTION ID

PROPOSED CONDITION FLOW SUMMARY			
BASIN ID / COMB. PT	BASIN AREA (ac)	100-YR FLOW (cfs)	10-YR FLOW (cfs)
**CP-3	-	51	28
*DOF3	1.05	4	2
*DOF1	5.97	19	9
*DOF4	1.70	5	3
*DOF5	0.73	2	1
*CP1	-	116 (30)	39 (14)
GMP	0.75	3	2
CP3	-	119 (33)	41 (16)
*DOF2	4.25	13	6
ON	8.80	27	13
CP2	-	40	19
**ON1-U	1.42	4	2
**ST1-U	1.45	5	3
**CP-7	-	60	21

*Referenced/Revised from Montecito Study
 **Referenced/Revised from Commercial Study
 () HEC1 Flows

PROPOSED CONDITION PRORATED FLOW SUMMARY					
Proposed Onsite					
SUBBASIN	Q ₁₀₀ (cfs)	Q ₁₀ (cfs)	AREA (ac)	Q ₁₀₀ (cfs/acre)	Q ₁₀ (cfs/acre)
ON	27	13	8.80	3.07	1.48
Proposed Onsite Prorated Basins					
SUBBASIN	Q ₁₀₀ (cfs)	Q ₁₀ (cfs)	AREA (ac)	Q ₁₀₀ (cfs/acre)	Q ₁₀ (cfs/acre)
ON1	1	0.5	0.26	3.07	1.48
ON2	2.5	1	0.82	3.07	1.48
ON3	1	0.5	0.30	3.07	1.48
ON4	0.5	<1	0.17	3.07	1.48
ON5	<1	<1	0.15	3.07	1.48
ON6	1	0.5	0.26	3.07	1.48
ON7	1.5	1	0.51	3.07	1.48
ON8	2.5	1.5	0.76	3.07	1.48
ON9	<1	<1	0.14	3.07	1.48
ON10	0.5	<1	0.19	3.07	1.48
ON11	2	1	0.54	3.07	1.48
ON12	0.5	<1	0.18	3.07	1.48
ON13	2	1	0.66	3.07	1.48
ON14	1	0.5	0.27	3.07	1.48
ON15	1.4	1	0.46	3.07	1.48
ON16	1	0.5	0.29	3.07	1.48
ON17	1.5	1	0.53	3.07	1.48
ON18	1	<1	0.21	3.07	1.48
ON19	1.4	1	0.47	3.07	1.48
ON20	1	0.5	0.32	3.07	1.48
ON21	<1	<1	0.17	3.07	1.48
ON22	1	0.5	0.29	3.07	1.48
ON23	0.5	<1	0.18	3.07	1.48
ON24	<1	<1	0.13	3.07	1.48
ON25	1	0.5	0.29	3.07	1.48
ON26	1	0.5	0.24	3.07	1.48
TOTAL	27	13	8.80	NA	NA

Kimley-Horn

© 2024 KIMLEY-HORN AND ASSOCIATES, INC.
 6671 LAS VEGAS BOULEVARD SOUTH, SUITE 320
 LAS VEGAS, NV 89119
 WWW.KIMLEY-HORN.COM
 PHONE: 702-862-3600

No. _____

REVISIONS _____

DATE _____

KHA PROJECT: 092935040

DATE: 7/16/2024

SCALE: AS SHOWN

DESIGNED BY: SS

DRAWN BY: SS

CHECKED BY: MS

DATE: 7/16/2024

OVERALL PROPOSED CONDITION BASIN MAP

DURANGO & GRAND MONTECITO

PREPARED FOR LENNAR HOMES

CITY OF LAS VEGAS

NEVADA

PRO-1