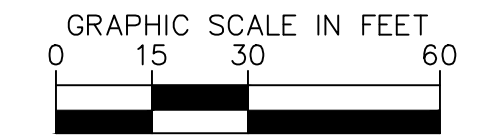
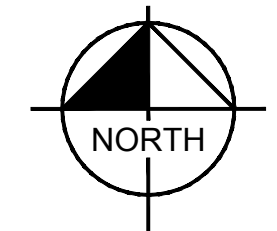
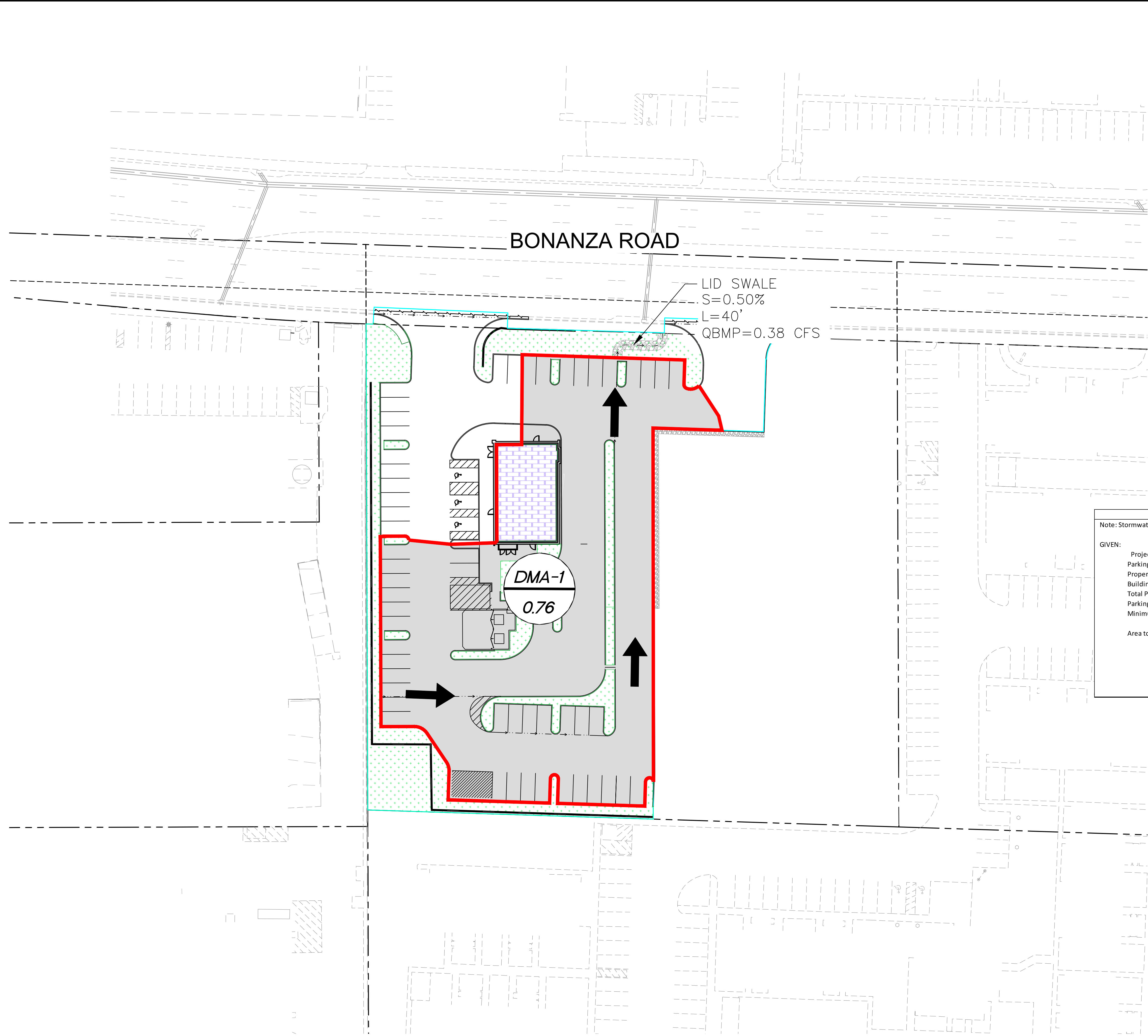


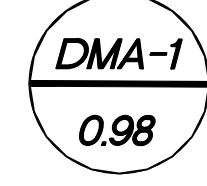


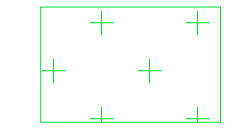

Appendix C – LID Figure and Calculations

- LID Basin Map

Plotted By: Seefeld, Sean. Sheet Set: Pda - Layouts/KHA - April 23, 2024. 03:36:58pm. K:\LAV_Gis\192363004-Panda Express Eastern & Bonanza\Bocraft\Bocraft\BRAINAGE_02_ADD\Enforce\LID_ADD.dwg
 This document, together with the concepts and designs presented herein, is intended only for the specific purpose and client for which it was prepared. Reuse of and improper reliance on this document without written authorization and adaptation by Kimley-Horn and Associates, Inc. shall be without liability to Kimley-Horn and Associates, Inc.



LEGEND


-  DRAINAGE MANAGEMENT AREA
-  TREATED IMPERVIOUS AREA
-  PERVIOUS AREA
-  BUILDING AREA
-  ON-SITE FLOW ARROW

PARKING LOT DATA CALCULATIONS
 Note: Stormwater Quality Design Volume calculated using steps from Section 1500 Figures 1501-1503 of the CCRFCD HCDDM, Revised 2013

GIVEN:

Project Description:	Panda Express - Eastern and Bonanza	Acres
Parking Lot Data		
Property Size (PS)	=	1.41
Building Area (BA)	=	0.05
Total Pervious Area (TPA)	=	0.41
Parking Lot Area (PLA) = (PLA = PS-BA-TPA)	=	0.95
Minimum PLA to be treated = (PLA * 0.75)	=	0.71 acres
Area to be treated by the proposed LID BMPs		
Drainage Area 1	=	0.76
Total	=	0.76 acres

Since 0.76 ac >= 0.71 ac then site satisfies Parking Lot LID criteria

LID	PANDA EXPRESS - EASTERN AND BONANZA PREPARED FOR PANDA RESTAURANT GROUP <small>NEVADA</small> <small>CITY OF LAS VEGAS</small>	LID BASIN MAP	KHA PROJECT 192404000	DATE APRIL 4, 2024	SCALE AS SHOWN	DESIGNED BY SIMI	DRAWN BY SS	CHECKED BY MS	04/04/24	
			 <small>© 2024 KIMLEY-HORN AND ASSOCIATES, INC. 6671 LAS VEGAS BLVD S., SUITE 320, LAS VEGAS, NV 89119 PHONE: 702-862-8600 WWW.KIMLEY-HORN.COM</small>							
			No.	REVISIONS	DATE	BY				