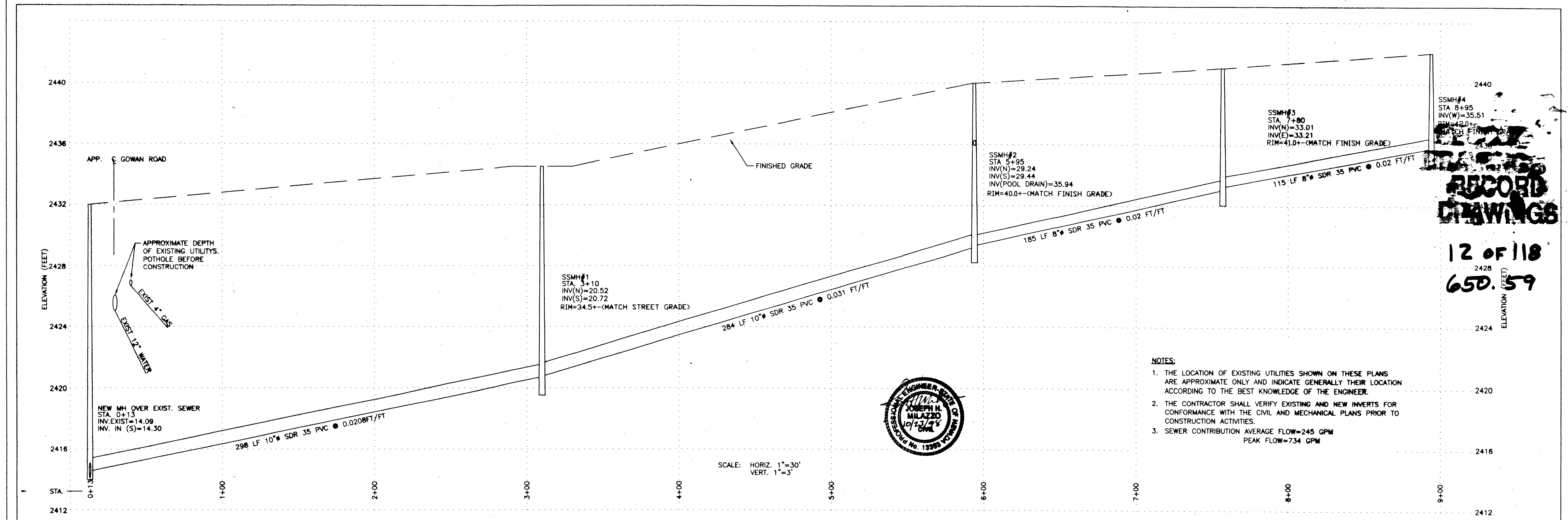


CONSTRUCTION NOTES

No.	DESCRIPTION
101	CONSTRUCT NEW MANHOLE OVER EXISTING SEWER
102	PROVIDE 10" PVC SEWER PIPE AND FITTINGS. TRENCH AND BACKFILL PER CCSD STD DTL SD-16 IN UNPAVED AREAS AND SD-16A IN PAVED AREAS.
103	PROVIDE PRECAST MANHOLE PER CCSD STD DTL SD-1 PROVIDE MANHOLE BASE PER CCSD STD DTL SD-7 PROVIDE RING& COVER PER CCSD STD DTL SD-2
104	PROVIDE DEEP LATERAL CONNECTION PER CCSD STD DTL SD-18
105	PROVIDE 8" PVC SEWER PIPE AND FITTINGS. TRENCH AND BACKFILL PER CCSD STD DTL SD-16 IN UNPAVED AREAS AND SD-16A IN PAVED AREAS.
108	PROVIDE GRADE RING SEQUENCE PER CCSD STD DTL SD-6
107	PROVIDE SPECIAL HIGH DROP MANHOLE PER CCSD STD.DTL SD-9 PROVIDE PRECAST MANHOLE PER CCSD STD.DTL SD-7. PROVIDE RING&COVER PER CCSD STD. DTL SD-2



This drawing is the property of HARDING LAWSON ASSOCIATES, including all patented and patentable features, and/or confidential information and its use is conditioned upon the user's agreement not to reproduce the drawing, in whole or part, nor the material described therein, nor the use of the drawing for any purpose other than specifically permitted in writing by HARDING LAWSON ASSOCIATES.

NO.	DATE	REVISIONS	BY	CHK
1	11/03/98	REVISED PER CITY OF LAS VEGAS COMMENTS	JHM	SMU
2	2/08	REVISED PER CITY OF LAS VEGAS COMMENTS	JHM	GAH
3	10/23/98	CONSTRUCTION CHANGE TO RELOCATE STREET MANHOLE	JHM	GAH

DRAWN:	JAC	PROJECT NO.:	41712	FILE NAME:	CDSEWER.DWG
ENGINEER:	JHM	SCALE:	AS SHOWN		
CHECKED:	GAH	APPROVED:			
DATE:	10-30-97	DATE:			

Harding Lawson Associates
 Engineering and Environmental Services
 5145 S. Arville St. Ste. A
 Las Vegas, Nevada
 (702) 251-5449

NORTHWEST FAMILY RECREATION CENTER
 CITY OF LAS VEGAS
 400 E. STEWART
 LAS VEGAS, NEVADA

SANITARY SEWER SYSTEM PLAN AND PROFILE

27024

DRAWING:	C11
SHEET:	17 of 17
REVISION NUMBER:	
DATE:	