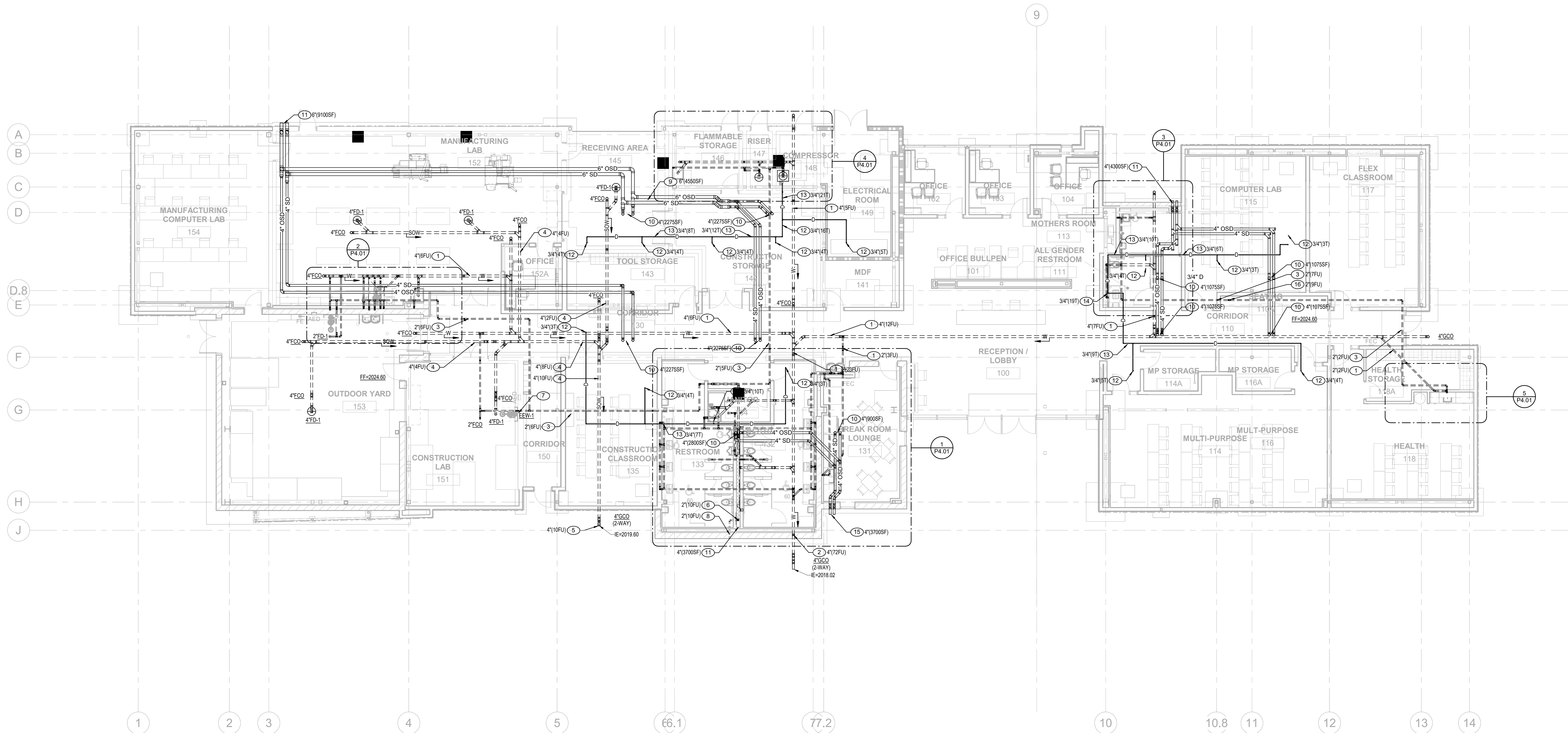




**KEYED NOTES 'O'**

1. WASTE BELOW FLOOR.
2. WASTE BELOW GRADE.
3. VENT HIGH ABOVE STRUCTURE.
4. SAND-OIL WASTE BELOW FLOOR.
5. SAND-OIL WASTE BELOW GRADE.
6. VENT RISE UP FROM BELOW FLOOR.
7. 2" WASTE DOWN AND 2" VENT UP.
8. VENT BELOW GRADE.
9. STORM DRAIN AND OVERFLOW STORM DRAIN ABOVE CEILING.
10. STORM DRAIN AND OVERFLOW STORM DRAIN FROM ROOF DRAIN AND OVERFLOW DRAIN RECEPTOR ABOVE.
11. STORM DRAIN AND OVERFLOW STORM DRAIN STACK TO SPILL 12" ABOVE GRADE.
12. CONDENSATE DRAIN DROP FROM ROOF ABOVE.
13. CONDENSATE DRAIN ABOVE CEILING.
14. CONDENSATE DROP WITH ELBOW TURNED DOWN OVER FLOOR SINK WITH 1" AIR GAP.
15. STORM DRAIN AND OVERFLOW STORM DRAIN BELOW GRADE TO TERMINATE BY WAY OF CURB-O-LET.
16. VENT THRU ROOF.



**WASTE / VENT PLAN - HEALTH**

SCALE: 1/8" = 1'-0"

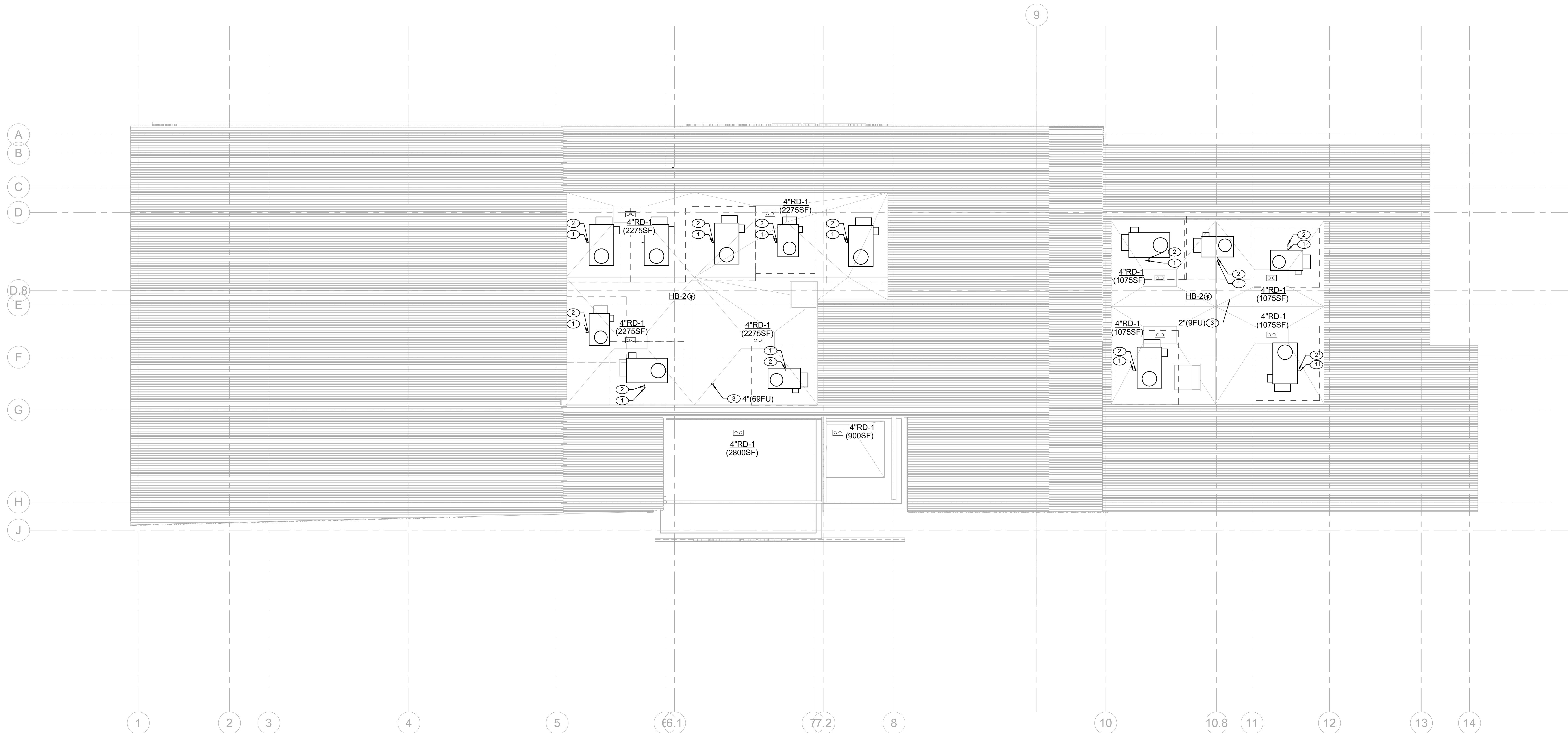
<p>CONSTRUCTION DOCUMENTS PERMIT DOCUMENTS BUILDING DEPARTMENT COMMENTS BUILDING DEPARTMENT COMMENTS BUILDING DEPARTMENT COMMENTS BUILDING DEPARTMENT COMMENTS BD SET</p>	<p>NO. DATE SHEET</p>	<p>REVISIONS</p>
<p>PREPARED BY <b>CRIPPIER SELLERS DEL CORTO</b> REGISTERED PROFESSIONAL ENGINEER IN ASSOCIATION WITH <b>K&amp;B</b></p>	<p>DATE: 01.23.24 CP # MW706 FL # 521312 CHECKED BY: XX</p>	<p>NO. DATE SHEET</p>
<p><b>HISTORIC WESTSIDE EDUCATION AND TRAINING CENTER</b></p>		
<p><b>PLUMBING WASTE PLAN - LEVEL 1</b></p>		
<p><b>P2.01</b></p>		
<p>DRAWING NO.</p>		

**HARRIS**  
CONSULTING ENGINEERS  
301 West Flamingo Ave., Las Vegas, Nevada 89102  
Tel: (702) 251-1311 Fax: (702) 251-1314  
www.harrisengineers.com

PROJECT NO: 2022153  
DESIGNED BY: D. JOHNSON  
CHECKED BY: L. ANCHETA  
DRAWN BY: P. DIB  
PK: K. BELL

**KEYED NOTES 'O'**

1. CONDENSATE DRAIN DROP DOWN THRU ROOF.
2. CONDENSATE DRAIN ROUGH-IN AND CONNECT TO HVAC UNIT. PROVIDE RUNNING TRAP AND AIR VENT.
3. VENT THRU ROOF.



**PLUMBING WASTE PLAN - ROOF**  
SCALE: 1/8" = 1'-0"

**HARRIS**  
CONSULTING ENGINEERS  
300 West 10th Street, Suite 200, Las Vegas, Nevada 89101  
702.251.1111 Fax: 702.251.1111  
www.harrisengineers.com

PROJECT NO: 2022153  
DESIGNED BY: D. JOHNSON  
CHECKED BY: L. ANCHETA  
DRAWN BY: P. DIB  
PK: K. BELL

PREPARED FOR  
**CITY OF LAS VEGAS**

TITLE  
**HISTORIC WESTSIDE EDUCATION AND TRAINING CENTER**

SHEET  
**PLUMBING WASTE PLAN - ROOF**

BID # 24.MWA706  
DATE: 01.23.24  
CP # MWA706

SUBMITTAL STAGE: P.D.B.  
BID SET  
FL # 521512  
CHECKED BY: XX

**P2.11**

DRAWING NO.

PREPARED BY  
**CARPINTER SELLERS DEL CRTICO**  
EXCELENTES  
IN ASSOCIATION WITH  
**KTB**

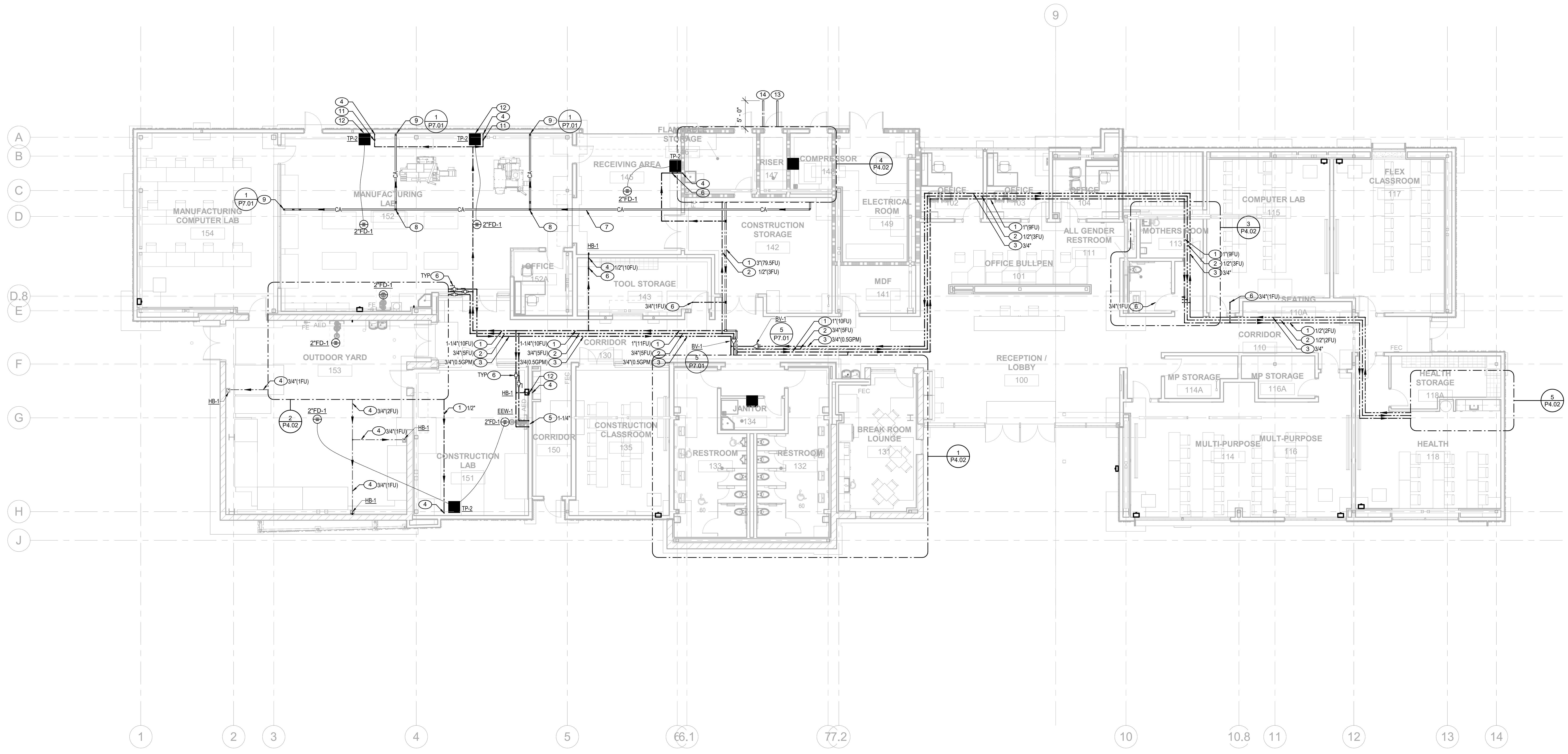
STATE OF NEVADA  
PLUMBING  
K. BELL  
No. 14721  
January 24, 2024

CONSTRUCTION DOCUMENTS	NO.	DATE	SHEET	REVISIONS
PERMIT DOCUMENTS				
BUILDING DEPARTMENT COMMENTS	A	11.07.23		
BUILDING DEPARTMENT COMMENTS	B	12.14.23		
BUILDING DEPARTMENT COMMENTS	C	01.18.24		
BID SET		01.23.24		

6/28/2019 C:\DWG\2019\CIVIL\PLUMBING\KAWA706\3D\CAD\BID SET\PLUMBING\WASTE PLAN - ROOF.DWG

**KEYED NOTES 'O'**

1. COLD WATER HIGH ABOVE TIGHT TO STRUCTURAL DECK.
2. HOT WATER HIGH ABOVE TIGHT TO STRUCTURAL DECK.
3. HOT WATER RETURN HIGH ABOVE TIGHT TO STRUCTURAL DECK.
4. COLD WATER DROP.
5. COLD WATER AND HOT WATER DROP.
6. SHUT-OFF VALVE LOCATED AND MADE READILY ACCESSIBLE ABOVE CEILING.
7. COMPRESSED AIR HIGH ABOVE STRUCTURE.
8. COMPRESSED AIR RISE AND DROP.
9. 3/4" COMPRESSED AIR DROP WITH BALL VALVE AND DIRT LEG. PROVIDE WILKERSON FILTER / REGULATOR MODEL NUMBER SSCP88 WITH 1/2" NPT PORT.
10. COLD WATER BELOW GRADE.
11. SHUT-OFF VALVE LOCATED AND MADE READILY ACCESSIBLE HIGH ABOVE IN STRUCTURE.
12. WALL MOUNTED PLUMBING FIXTURE OR EQUIPMENT TO BE MOUNTED ABOVE 4' CMU WALL.
13. DOMESTIC COLD WATER SUPPLY BELOW GRADE. SEE CIVIL FOR CONTINUATION.
14. FIRE SUPPLY BELOW GRADE. SEE CIVIL FOR CONTINUATION.



**PLUMBING SUPPLY PLAN - LEVEL 1**  
SCALE: 1/8" = 1'-0"

<p>CONSTRUCTION DOCUMENTS</p> <p>PERMIT DOCUMENTS</p> <p>BUILDING DEPARTMENT COMMENTS</p> <p>BUILDING DEPARTMENT COMMENTS</p> <p>BUILDING DEPARTMENT COMMENTS</p> <p>BID SET</p>	<p>NO. DATE SHEET</p> <p>1 01.23.24 A</p> <p>2 01.23.24 B</p> <p>3 01.23.24 C</p> <p>4 01.23.24 D</p>	<p>REVISIONS</p>
<p>PREPARED BY: <b>CRIPPIER SELLERS DEL CORTO</b></p> <p>IN ASSOCIATION WITH: <b>KTB</b></p>		
<p>STATE OF NEVADA</p> <p><b>KENT T. BELL</b></p> <p>REGISTERED PROFESSIONAL ENGINEER</p> <p>PLUMBING</p> <p>NO. 14271</p> <p>January 24, 2024</p>		
<p><b>TITLE: HISTORIC WESTSIDE EDUCATION AND TRAINING CENTER</b></p> <p><b>SHEET: PLUMBING SUPPLY PLAN - LEVEL 1</b></p>		
<p>PREPARED FOR: <b>CITY OF LAS VEGAS</b></p> <p>BID # 24.MWA706</p>	<p>PROJECT NO: 2022153</p> <p>DATE: 01.23.24</p> <p>CP # MWA706</p>	<p>CHECKED BY: <b>P. DIB</b></p> <p>DESIGNED BY: <b>D. JOHNSON</b></p> <p>DRAWN BY: <b>K. BELL</b></p>
<p>SUBMITTAL STAGE: <b>P3.01</b></p> <p>BID SET</p>	<p>FL # 521512</p> <p>CHECKED BY: <b>XX</b></p>	<p>DRAWING NO.</p>

