

**LEGEND**

- PROPOSED FLOW DIRECTION
- PROPOSED SUBBASIN BOUNDARY
- PRORATED BASIN BOUNDARY
- PROPOSED DRAINAGE SUBBASIN
- PRORATED DRAINAGE BASIN
- HYDRAULIC SECTION

ULTIMATE CONDITIONS  
HEC-1 MODEL SUMMARY

SUBBASIN OR CP	BASIN AREA (AC)	100 YR (cfs)	10 YR (cfs)
DOF1	8.6	26	12
DOF2	7.4	19	8
DON1	15.9	38	17

ULTIMATE CONDITIONS  
OFFSITE STREET BASINS

SUBBASIN OR CP	BASIN AREA (AC)	100 YR (cfs)	10 YR (cfs)
ELOG1a	2.7	10	5
ELOG1b	0.9	3	2
ELOG1c	0.7	2	1
ELOG2a	3.1	9	5
EOHR1a	2.2	6	3
EOHR1d	1.9	6	3

Referenced from Exhibit E within the "TDS for Sunstone Phase 1" (DS 5135), dated Aug, 2019

PRORATED BASIN  
STORM FLOW SUMMARY

SUBBASIN OR CP	BASIN AREA (AC)	% OF DON1	100 YR (cfs)
PR1	4.43	27.8	11
PR2	1.34	8.4	3
PR3	1.56	9.8	4
PR4	1.85	11.6	4
PR5	2.01	12.6	5
PR6	2.10	13.2	5
PR7	2.57	16.2	6

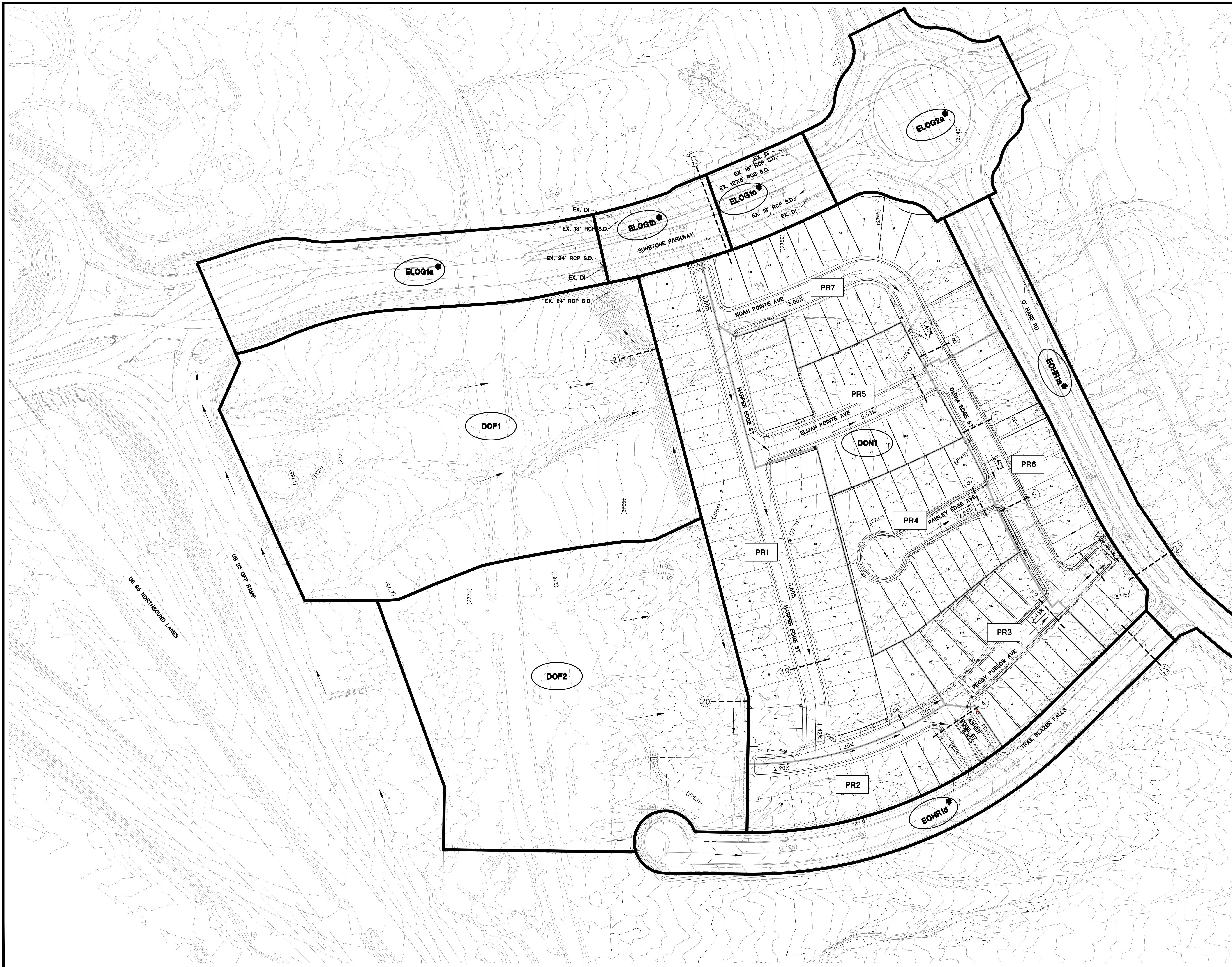
100-YEAR HYDRAULIC SECTIONS

Location	Basins	Slope (%)	Q <sub>100</sub> (cfs)	D <sub>100</sub> (ft)	V <sub>100</sub> (ft/sec)	D'V <sub>100</sub>
Section 1	DON1-PR2	1.34	35	0.49	3.75	1.8
Section 2	PR1 + PR3	2.45	14	0.34	3.92	1.3
Section 3 (1/2 ST.)	PR1	1.25	11	0.44	3.19	1.4
Section 4	PR2	0.55	3	0.35	1.95	0.7
Section 5	PR4 + PR5 + PR6 + PR7	1.40	20	0.42	3.33	1.4
Section 6	PR4	2.68	4	0.23	3.09	0.7
Section 7	PR5 + PR7	1.40	11	0.34	2.99	1.0
Section 8	PR7	1.40	6	0.28	2.60	0.7
Section 9	PR5	2.38	5	0.25	3.08	0.8
Section 10	PR1	0.80	11	0.37	2.41	0.9
Section 11	DON1-PR2	2.00	35	0.41	8.49	3.5
Section 20	DOF2	0.50	19	0.85	2.6	2.2
Section 21	DOF1	0.50	26	1.69	3.03	5.1

OFFSITE STREETS  
100-YEAR HYDRAULICS SECTIONS

Location	Basins	Slope (%)	Q <sub>100</sub> (cfs)	D <sub>100</sub> (ft)	V <sub>100</sub> (ft/sec)	D'V <sub>100</sub>
Section LC2 *	REFERENCED	4.06	7	0.31	4.09	1.3
Section 22	PR2 + DOF2 + EOHR1d	3.00	28	0.47	4.97	2.3
Section 23	DON1 - PR2 + EOHR1a	1.00	41	0.6	3.67	2.2

\* HYDRAULIC SECTIONS REFERENCED FROM "TDS FOR SUNSTONE PHASE 1" (DS 5135)



ASHER • SUNSTONE  
LENNAR

FIGURE 6  
ULTIMATE CONDITIONS MAP



C:\3040\_LENNAR\0629\_Sunstone\06\_BASIN\FIGURES\UPDATE\_1\figure6.dwg 06/17/24 11:45am