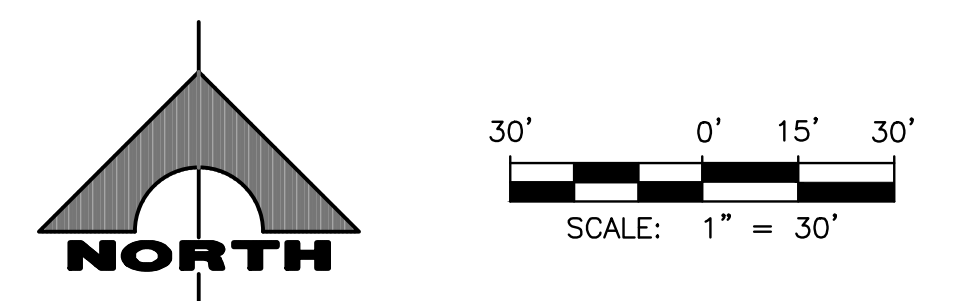
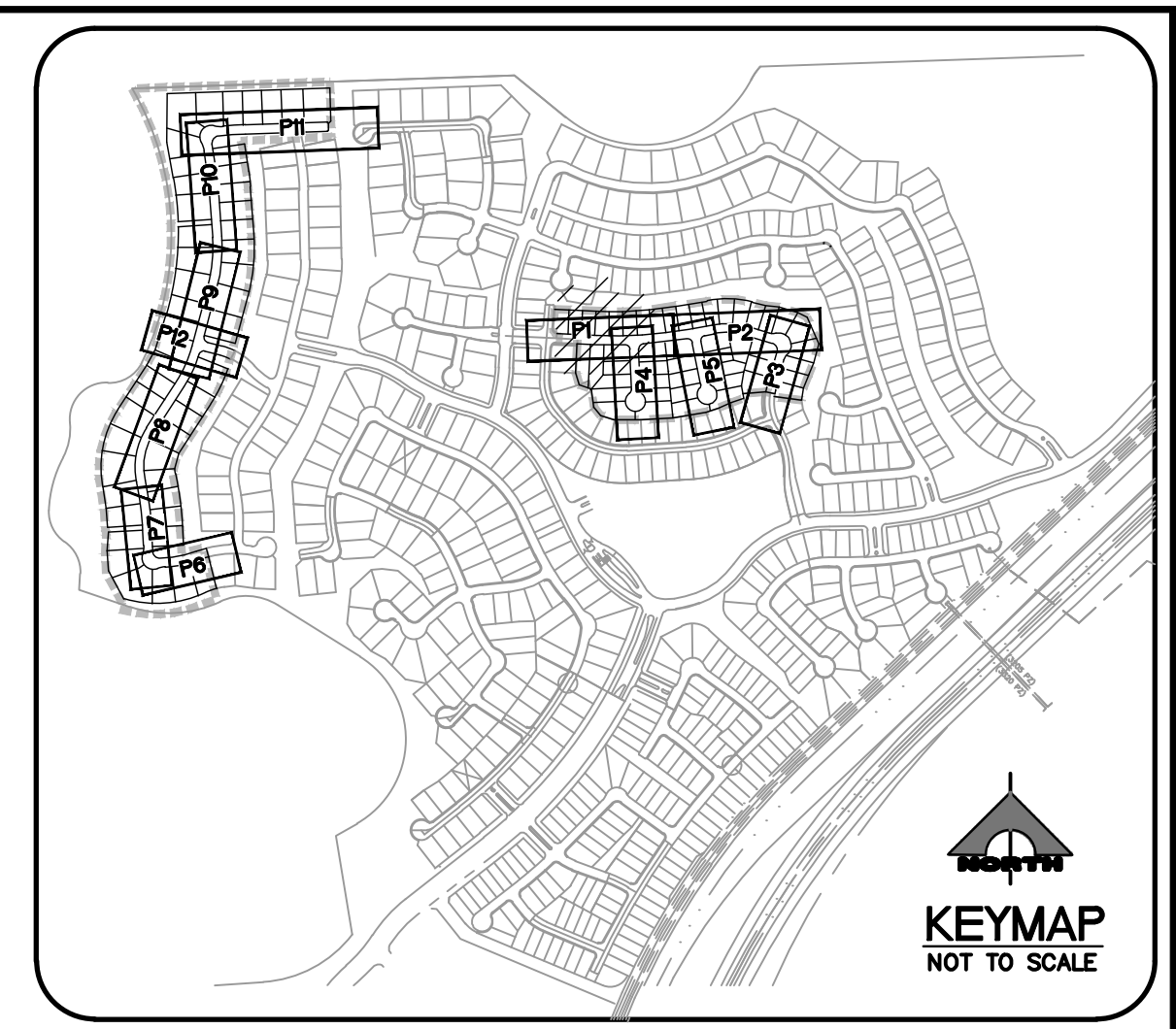


STORM DRAIN LATERAL 3
 SCALE: HORIZ. 1" = 30'
 VERT. 1" = 5'



- CONSTRUCTION NOTES**
- 12 CAST-IN-PLACE MONOLITHIC POUR WITH WATERSTOP BETWEEN SLAB AND WALLS, BASE, WALLS AND TOP TO BE CONSTRUCTED WITH WATERSTOPS, CENTER BULB, OR FLAT STRIP (VIBREX, GREENSTREAM PLASTIC PRODUCTS OR APPROVED EQUAL).
 - 14 CONSTRUCT FULL STRENGTH GROUT PER DCSWCS 3.16.4, WATERTIGHT JOINTS USING AGENCY-APPROVED SEALS AT MANHOLE JOINTS AND GRADE RINGS PER DCSWCS 3.16.2, AND RAVEN LINING SYSTEM OR WARREN ENVIRONMENTAL LINING SYSTEMS.
 - 2 CONSTRUCT CONCRETE CAP PER DCSWCS SD-21.
 - 6 REMOVE EXISTING 8" PVC SANITARY SEWER PIPE AND REPLACE WITH 8" PVC SANITARY SEWER PIPE AND 18" STEEL CASING PER UDACS PLATE NO. 23.

NOTE:
 WATER MAIN JOINT DEFLECTION, PER UDACS 2.07.01 AND 2.07.03.

TO ENSURE LVVWD ACCESS WITHIN EASEMENT
 ALL ABOVE GROUND OBSTRUCTIONS INCLUDING BUT NOT LIMITED TO LANDSCAPE BOULDERS, FENCE/ WALLS, AND SIGNS ARE STRICTLY PROHIBITED WITHIN EASEMENT.

SEWER CONNECTION NOTE
 ONE OR MORE SEGMENTS OF THE DOWNSTREAM SEWER SYSTEM THAT WILL SERVE THIS PROJECT HAS NOT BEEN COMPLETED AND/OR ACCEPTED FOR MAINTENANCE BY THE CITY OF LAS VEGAS. ANY WORK DONE ON THIS PROJECT PRIOR TO THE COMPLETION AND/OR ACCEPTANCE OF THE DOWNSTREAM SEWER SYSTEM(S) SHALL BE DONE AT THE DEVELOPER'S OWN RISK. THE CITY OF LAS VEGAS RESERVES THE RIGHT TO PREVENT THE PHYSICAL CONNECTION OF THIS PROJECT INTO THE DOWNSTREAM SEWER SYSTEM UNTIL ALL SEGMENTS HAVE BEEN COMPLETED AND ACCEPTED FOR MAINTENANCE, OR UNTIL SUCH TIME AS THEY ARE DEEMED AVAILABLE FOR SERVICE.

NOTE
 ALL ONSITE STORM DRAINS AND ASSOCIATED STORM FACILITIES ARE PRIVATELY OWNED AND TO BE PRIVATELY MAINTAINED BY THE HOA.
 ALL PRIVATE STREETS ARE P.U.E., PUBLIC DRAINAGE EASEMENT AND PUBLIC SEWER EASEMENTS TO BE PRIVATELY MAINTAINED BY HOA.

NOTE TO CONTRACTOR
 EXISTING UTILITY LOCATIONS SHOWN HEREON ARE APPROXIMATE ONLY. IT SHALL BE THE CONTRACTOR'S RESPONSIBILITY TO DETERMINE THE EXACT VERTICAL AND HORIZONTAL LOCATION OF ALL EXISTING UNDERGROUND UTILITIES PRIOR TO COMMENCING CONSTRUCTION. NO REPRESENTATION IS MADE THAT ALL EXISTING UTILITIES ARE SHOWN HEREON. THE ENGINEER ASSUMES NO RESPONSIBILITY FOR UTILITIES NOT SHOWN OR UTILITIES NOT SHOWN IN THEIR PROPER LOCATION.

BASIS OF BEARING
 SOUTH 89°39'55" EAST, BEING THE BEARING OF THE NORTH LINE OF THE NORTHWEST QUARTER (NW 1/4) OF THE NORTHWEST QUARTER (NW 1/4) OF SECTION 13, TOWNSHIP 20 SOUTH, RANGE 59 EAST, M.D.M., AS SHOWN IN FILE 112, PAGE 94 OF PARCEL MAPS ON FILE AT THE CLARK COUNTY, NEVADA RECORDER'S OFFICE.

BENCHMARK
 PROJECT DATUM: SUMMERLIN VILLAGE 26 - REVERENCE PROJECT MODIFIED DATUM
 CLARK COUNTY VERTICAL CONTROL POINT: 5LV09 1456
 SUMMERLIN VILLAGE 26 - REVERENCE PROJECT MODIFIED DATUM: 3227.64 FEET
 NAVD88 DATUM: 983.659 METERS (3227.22 FEET)
 RIVET & PLATE IN HEAD WALL WEST OF CC215 +/-250' NORTH OF LAKE MEAD.
 TO OBTAIN SUMMERLIN VILLAGE 26 - REVERENCE PROJECT MODIFIED DATUM ADD 0.42 FEET TO NAVD88 DATUM.

Call before you Dig
 Avoid cutting underground utility lines. It's costly.

1-800-227-2600

FAST

Call before you UnderGround
1-702-432-5300

FREEMAN AND ARTERIAL SYSTEM OF TRANSPORTATION

AVOID HITTING OVERHEAD POWER LINES. IT'S COSTLY.

CALL BEFORE YOU DO OVERHEAD

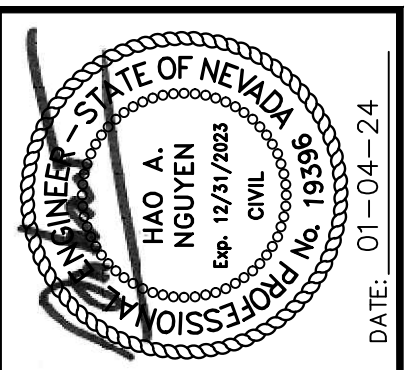
1-702-227-2929

UTILITY APPROVAL

SOUTHWEST GAS CORP. _____ DATE: _____

APPROVED FOR CONSTRUCTION

LAS VEGAS VALLEY WATER DISTRICT ENGINEERING SERVICES
 PROJECT NO. 126361 FIRST APPROVED DATE: _____



REV	DATE	DESCRIPTION
1	11/01/24	REVISED STORM DRAIN INVERTS

PROJECT NO. **764-204-016**
 DESIGN: _____
 DRAWN: _____
 CHECK: _____
 PLOT DATE: 01-04-24
 PLOT TIME: 11:10:01

GCV ENGINEERS & SURVEYORS
 1555 S. RAINBOW BLVD.
 LAS VEGAS, NV 89146
 T: 702.804.2000
 F: 702.804.2299
 gcvengineering.com

PULTE HOMES
 VILLAGE 26 - REVERENCE
 PHASE 3B
 STORM DRAIN LATERALS II

DRAWING
P14
 27 OF 55 SHTS