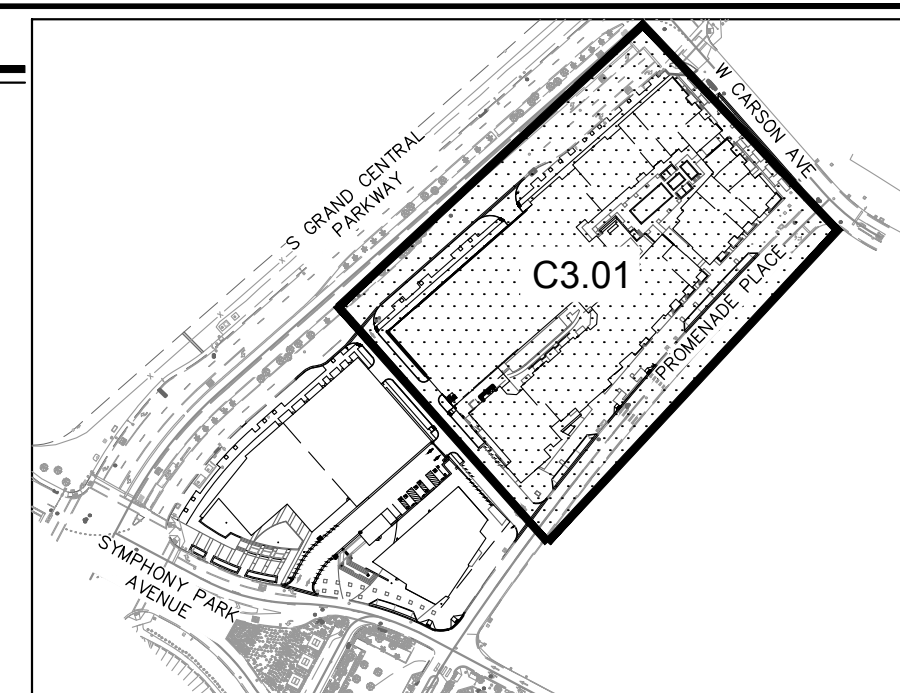
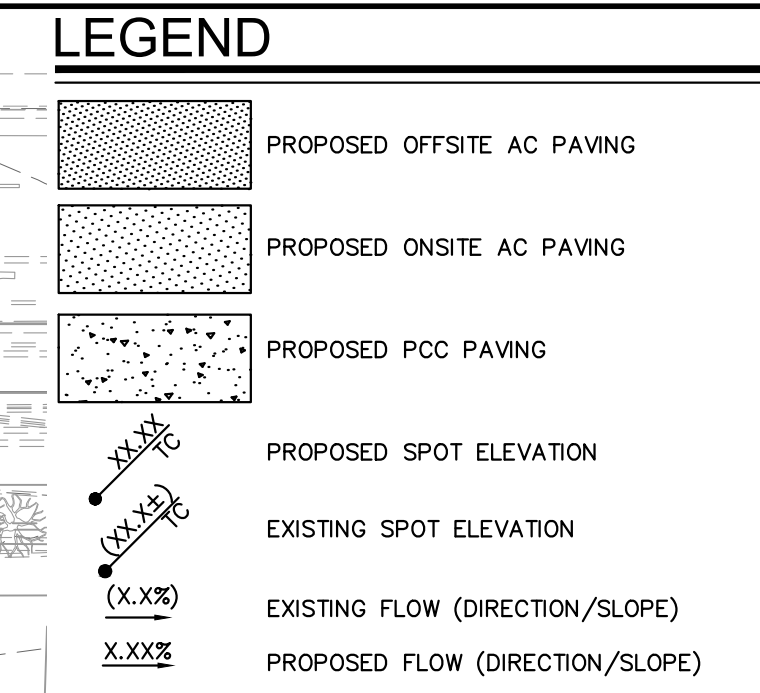
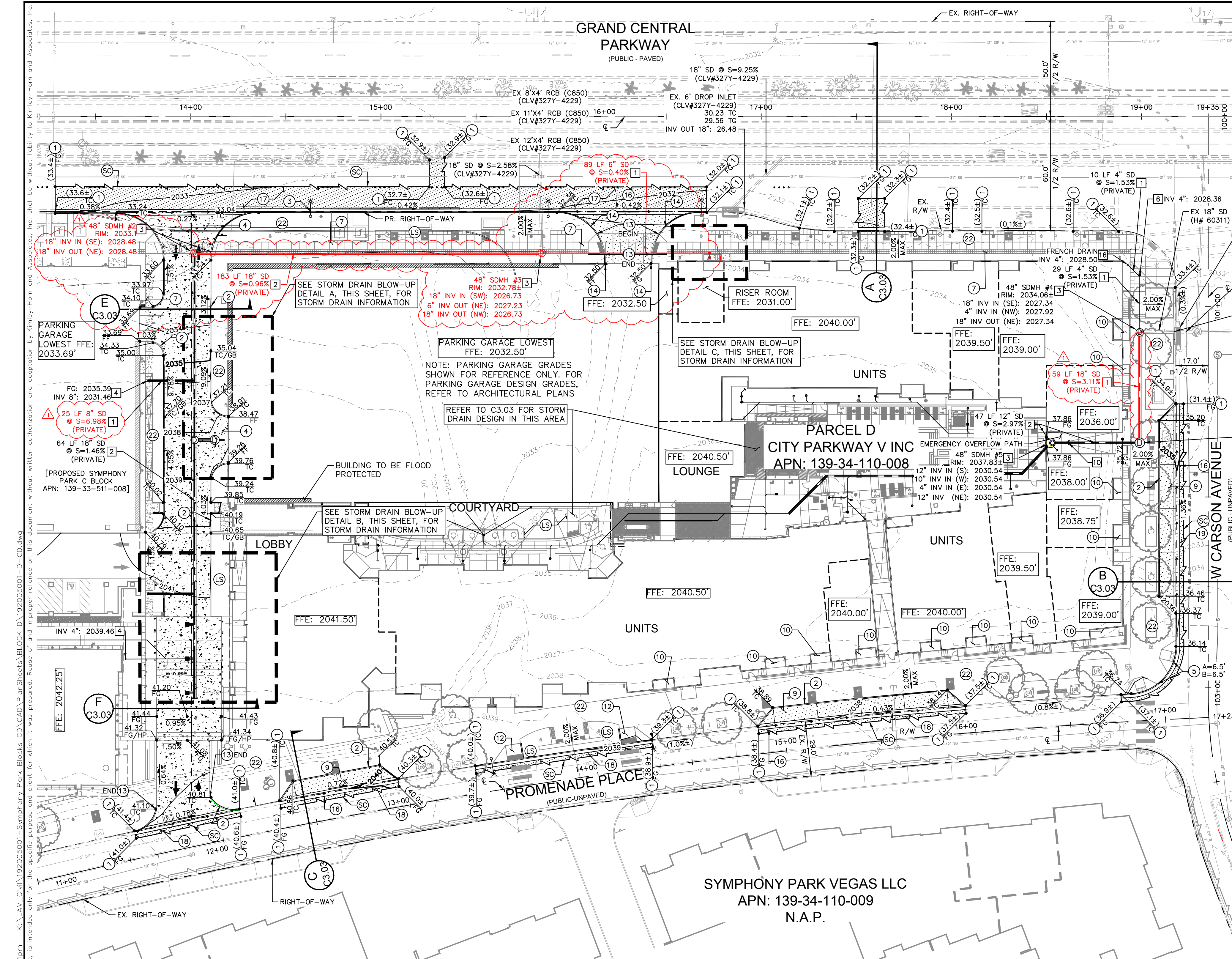


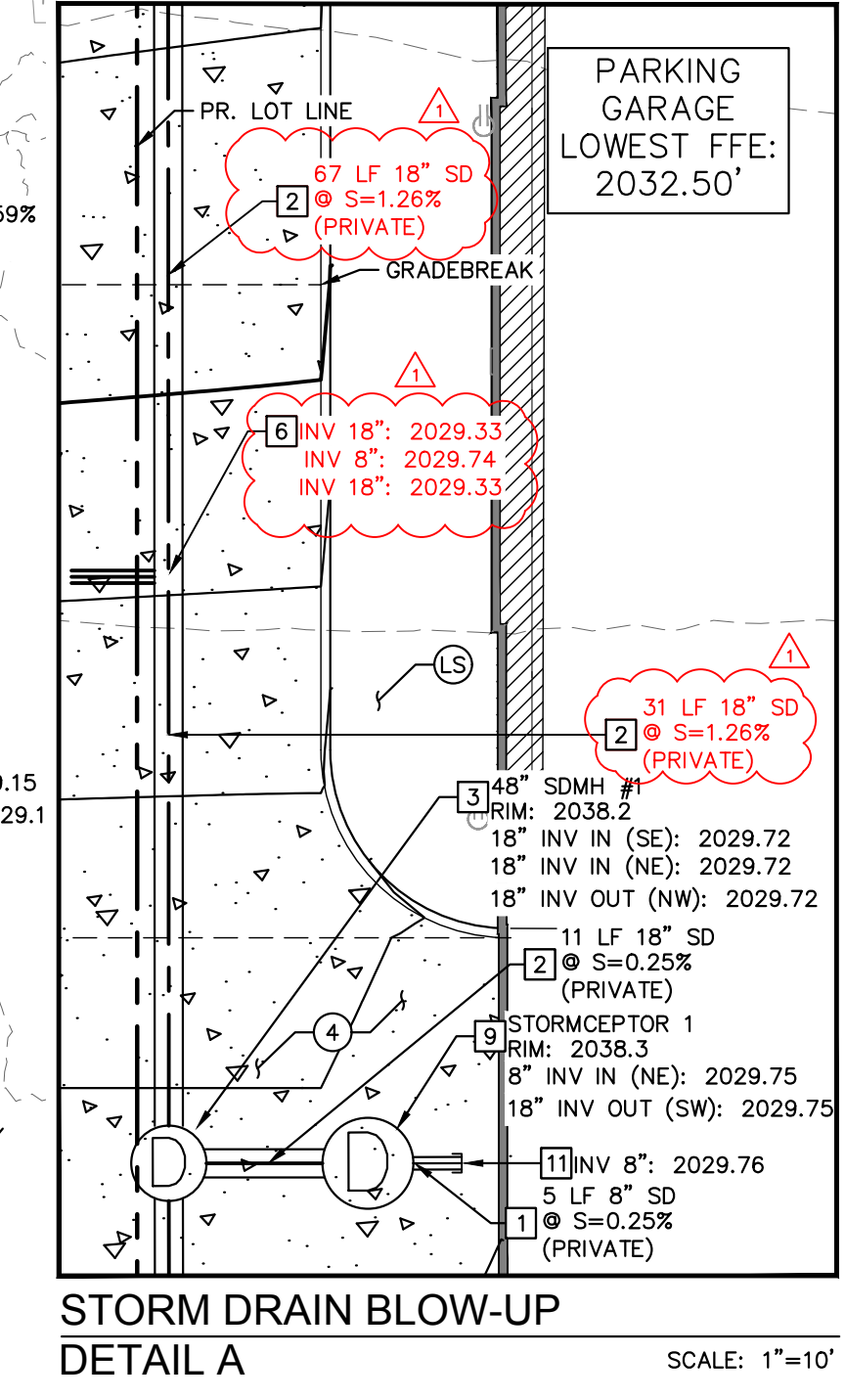
## **Appendix D – Improvement Plans**



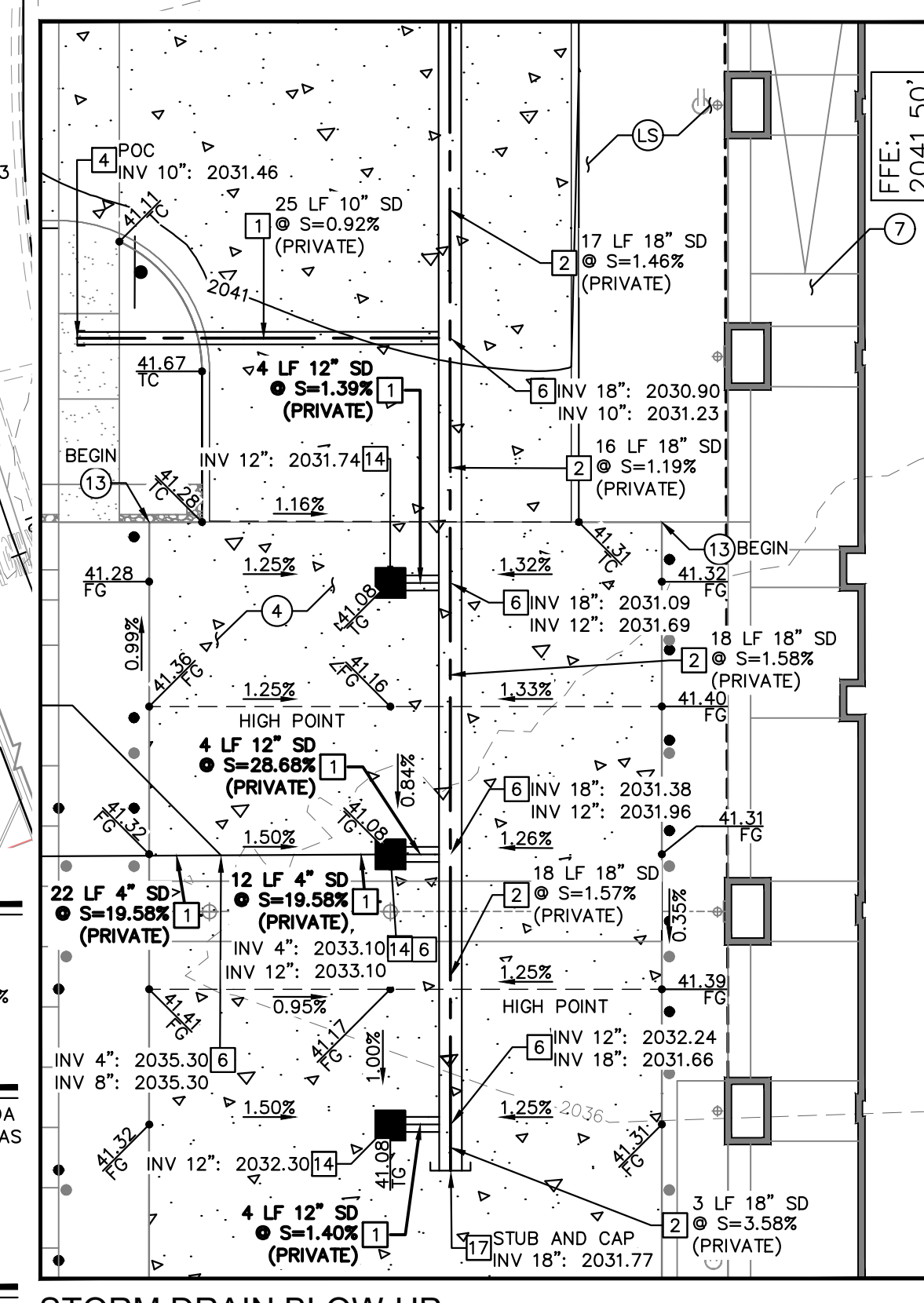
**VICINITY MAP**  
N.T.S.

- GENERAL NOTES**
- CONTRACTOR SHALL VERIFY EXISTING IMPROVEMENTS SHOWN ON THE PLAN, AND NOTIFY ENGINEER IMMEDIATELY IF DISCREPANCIES ARE PRESENT.
  - CONTRACTOR TO PROTECT IN PLACE, DURING DEMOLITION AND CONSTRUCTION, ALL EXISTING IMPROVEMENTS THAT ARE TO REMAIN AS NOTED ON THE PLAN.
  - ANY EXISTING STRUCTURE, IMPROVEMENT, OR APPURTENANCE TO REMAIN THAT IS DAMAGED DURING DEMOLITION OR CONSTRUCTION SHALL BE IMMEDIATELY REPAIRED OR REPLACED BY THE CONTRACTOR AT THE CONTRACTOR'S EXPENSE.
  - CONTRACTOR SHALL VERIFY AND LOCATE ALL EXISTING UNDERGROUND UTILITIES BEFORE CONSTRUCTION AND PROTECT IN PLACE UNLESS NOTED ON THE PLAN.
  - ALL DIMENSIONS ARE MEASURED FROM BACK OF CURB UNLESS OTHERWISE NOTED ON PLANS.
  - ADD 2000 FEET TO ALL SPOT ELEVATIONS.

- GRADING NOTES**
- MATCH EXISTING
  - INSTALL MODIFIED TYPE 'A' CONCRETE CURB PER DETAIL 3 ON SHEET C6.00
  - INSTALL TYPE 'L' CONCRETE CURB AND GUTTER PER CAUSD NO. 216
  - INSTALL 6" PCC OVER 6" TYPE II AGGREGATE BASE PER GEOTECHNICAL REPORT RECOMMENDATIONS. PAVEMENT FINISH TO BE PER LANDSCAPE PLANS. SEE DETAIL 6 ON SHEET C6.00
  - INSTALL CASE II SIDEWALK RAMP PER CAUSD NO. 235 (A & B PER PLAN)
  - CONSTRUCT SIDEWALK PER CAUSD NO. 234. REFER TO LANDSCAPE PLANS FOR COLOR AND FINISH
  - INSTALL 3" AC PAVEMENT OVER 7" TYPE II AGGREGATE BASE PER GEOTECHNICAL REPORT RECOMMENDATIONS AND DETAIL 5 ON SHEET C6.00. PAVEMENT FINISH TO BE PER LANDSCAPE PLANS.
  - BUILDING STAIRS REFER TO ARCHITECTURAL PLANS FOR NUMBER OF RISERS AND RISER DETAILS
  - INSTALL MODIFIED CASE II SIDEWALK RAMP PER DETAIL 14 ON SHEET C6.01
  - CONSTRUCT 0" CURB PER DETAIL 1 SHEET C6.00, LIMITS PER PLAN
  - TRANSITION FROM 6" CURB TO 0" CURB PER DETAIL 7 SHEET C6.01
  - INSTALL 3" WIDE VALLEY GUTTER PER DETAIL 2 ON SHEET C6.00
  - MATCH EXISTING PAVEMENT, CONTRACTOR TO VERIFY EXISTING PAVEMENT SECTION TO VERIFY EXISTING RIGHT-OF-WAY
  - INSTALL 5" AC PAVEMENT OVER 10" TYPE II AGGREGATE BASE PER EXISTING PROMENADE PLACE CONDITIONS (CLV DWG #1077505)
  - INSTALL 5" AC PAVEMENT OVER 14.5" TYPE II AGGREGATE BASE PER PROPOSED WEST CARSON AVENUE PLANS (# 60311)
  - REFER TO LANDSCAPE FOR HARDSCAPE GRADING. ALL GRADING WITHIN PEDESTRIAN PATHS TO BE 2% MAX CROSS SLOPE
  - REFER TO LANDSCAPE PLANS FOR DETAILS
  - SAWCUT

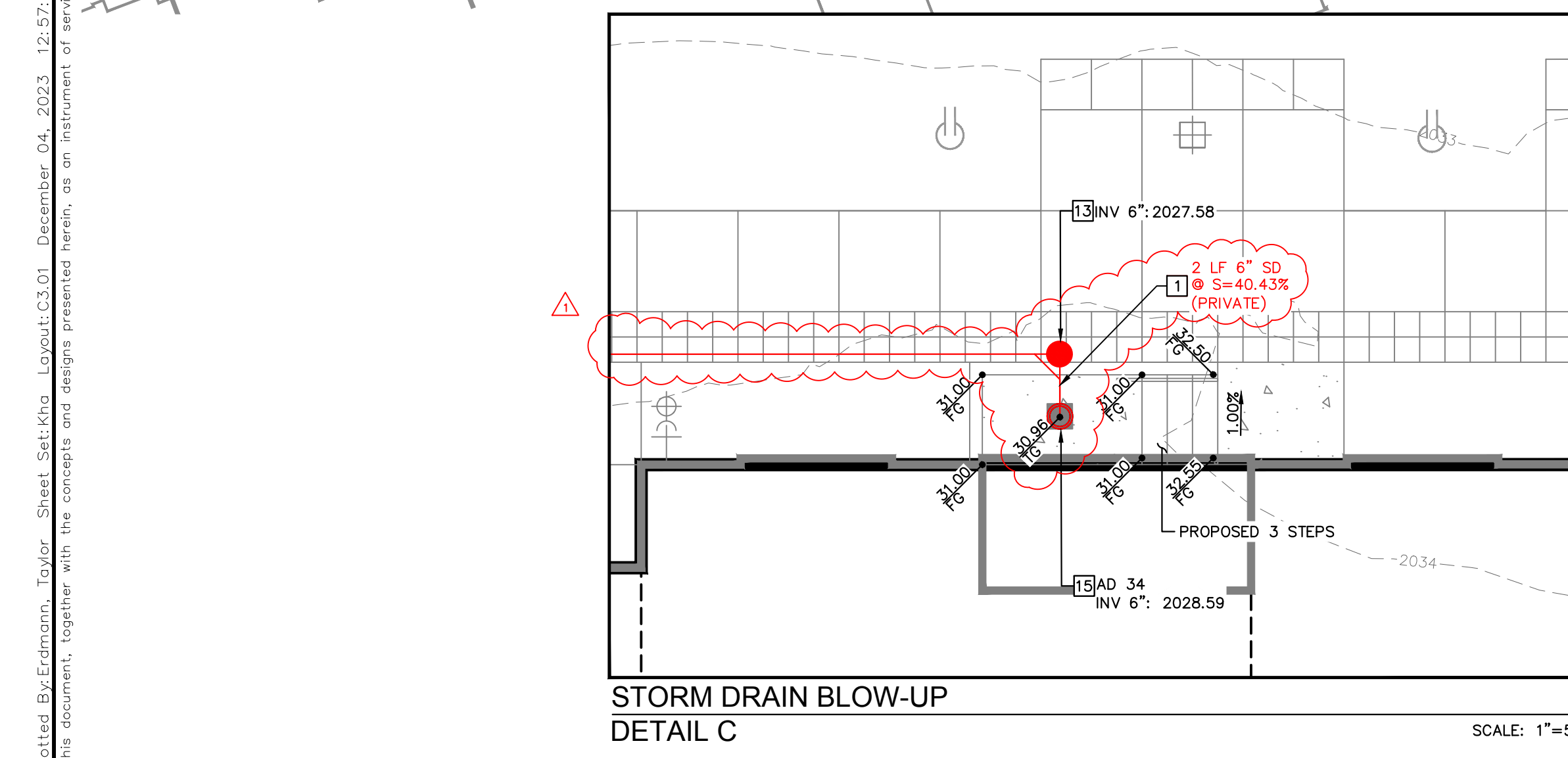


**STORM DRAIN BLOW-UP DETAIL A**  
SCALE: 1"=10'



**STORM DRAIN BLOW-UP DETAIL B**  
SCALE: 1"=10'

- STORM DRAIN NOTES**
- INSTALL PVC STORM DRAIN PIPE WITH EXCAVATION, BACKFILL AND TYPE 2 BEDDING PER CAUSD NO. 503.1, SIZE, LENGTH AND SLOPE PER PLAN
  - INSTALL RCP STORM DRAIN PIPE WITH EXCAVATION, BACKFILL AND TYPE 2 BEDDING PER CAUSD NO. 503.2, SIZE, LENGTH AND SLOPE PER PLAN
  - INSTALL TYPE I MANHOLE PER CAUSD NO. 403.1, COLLAR PER CAUSD NO. 408.1, COVER PER CAUSD NO. 409.1 AND 410, INSIDE DIAMETER AS NOTED ON PLAN
  - PROPOSED ROOF DRAIN LATERAL, REFER TO MEP PLANS FOR CONTINUATION
  - INSTALL INSERT-A-TEE (SAME SIZE AS PIPE) AND CONNECT TO STORM DRAIN, INVERTS PER PLAN
  - CONNECT TO EXISTING DROP INLET PER DETAIL 8 ON SHEET C6.01, CONTRACTOR TO VERIFY EXISTING INVERTS
  - INSTALL CDS2015-4-C (PRIVATE). REFER TO DETAIL 4 ON SHEET C6.00
  - REFER TO SHEET C3.03 FOR CONTINUATION AND COURTYARD AREA DRAINAGE DESIGN
  - REFER TO MECHANICAL/PLUMBING PLANS FOR CONTINUATION
  - INSTALL HPDE STORM DRAIN WITH EXCAVATION, BACKFILL AND TYPE 2 BEDDING PER CAUSD NO. 503.1, SIZE, LENGTH AND SLOPE PER PLAN
  - INSTALL 24"x24" JENSEN PRECAST STORM DRAIN INLET PER DETAIL 9 ON SHEET C6.01
  - INSTALL NYLOPLAST INLINE DRAIN W/ DOME GRATE PLANTER DRAIN (OR APPROVED EQUIVALENT)
  - FRENCH DRAIN CONNECTION, INVERT PER PLAN. SEE ARCHITECTURAL PLANS FOR CONTINUATION.
  - INSTALL STUB AND CAP



**STORM DRAIN BLOW-UP DETAIL C**  
SCALE: 1"=5'

**EARTHWORK ESTIMATE**

CUT VOLUME: 560 CY  
 FILL VOLUME: 20,540 CY  
 NET VOLUME: 19,980 CY OF IMPORT\*

\* - BASED ON A EXISTING SURFACE TO PROPOSED SUBGRADE SURFACE, UNADJUSTED ANALYSIS

**GEOTECHNICAL REPORT**

ORIGINAL	UPDATE #1
ENGINEER: GEOTECHNICAL & ENVIRONMENTAL SERVICES, INC.	ENGINEER: GEOTECHNICAL & ENVIRONMENTAL SERVICES, INC.
DATED: 04/27/2020	08/06/2021
PROJECT NO: 20194750E1	20194750E1R

**FLOOD ZONE NOTE**

THE FEDERAL EMERGENCY MANAGEMENT AGENCY (FEMA) PANEL NUMBER 32003C2107F, EFFECTIVE NOVEMBER 16, 2011, INDICATE THAT THE SITE IS LOCATED IN UNSHADED ZONE 'X', WHICH IS DEFINED BY FEMA AS 'AREAS DETERMINED TO BE OUTSIDE THE 0.2% ANNUAL CHANCE FLOODPLAIN.

**BASIS OF BEARING**

GRID NORTH AS DEFINED BY THE CENTRAL MERIDIAN OF THE NEVADA COORDINATE REFERENCE SYSTEM (NCRS), LAS VEGAS AND LAS VEGAS HIGH ELEVATION ZONES, NORTH AMERICAN DATUM OF 1983; SAID MERIDIAN BEING COINCIDENT WITH 114°58' WEST OF THE GREENWICH MERIDIAN. THE REFERENCE FRAME UTILIZED BEING NAD 83 (2011) EPOCH 2010.0.

**BENCHMARK**

BLV0133NE6: A RIVET AND PLATE IN TOP OF CURB AT THE SOUTHWEST CORNER OF SYMPHONY PAK AVENUE AND GRAND CENTRAL PARKWAY = 2034.128ft. (NAVD 88 - 2008 CLV ADJUSTMENT)

**LEGAL DESCRIPTION**

SEE C0.01 SHEET FOR FULL LEGAL DESCRIPTION.

**DRAINAGE CERTIFICATION**

I CERTIFY THAT THIS GRADING PLAN IS IN CONFORMANCE WITH THE APPROVED DRAINAGE STUDY ON FILE WITH CITY OF LAS VEGAS FOR THIS PROJECT, DS-05454

DATE: 12/04/23  
 MATTHEW J. MCAULEY, PE NO. 24594

ALL ONSITE STORM DRAINS AND THE ASSOCIATED FACILITIES ARE PRIVATELY OWNED AND TO BE PRIVATELY MAINTAINED BY THE PROPERTY OWNER OR THE HOA

**Kimley & Horn**  
 PROFESSIONAL ENGINEER - STATE OF NEVADA  
 MATTHEW J. MCAULEY, PE NO. 24594  
 CIVIL  
 6671 LAS VEGAS BLVD. S., SUITE 320, LAS VEGAS, NV 89119  
 PHONE: 702-862-3600  
 WWW.KIMLEY-HORN.COM

**SYMPHONY PARK BLOCK D**  
 GRADING PLAN  
 SHEET NUMBER C3.01

DATE: 12/04/23  
 REVISIONS: [Table with columns for No., Description, Date, By]

PROJECT: KHA PROJECT 192005001  
 DATE: DECEMBER 04, 2023  
 SCALE: AS SHOWN  
 DESIGNED BY: MJM  
 DRAWN BY: [Blank]  
 CHECKED BY: [Blank]

Call before you Dig  
 Call before you UnderGround  
 Call before you Overhead  
 1-702-432-5300  
 1-800-642-2444  
 1-702-227-2929

DWG#107V9320 CLV#L21-01635 SHEET 7 OF 13