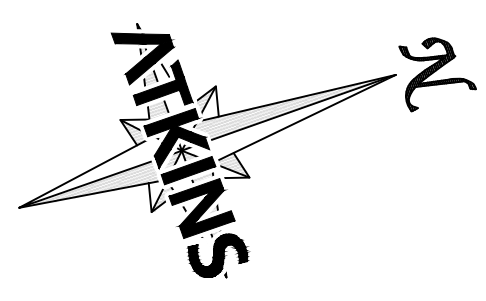
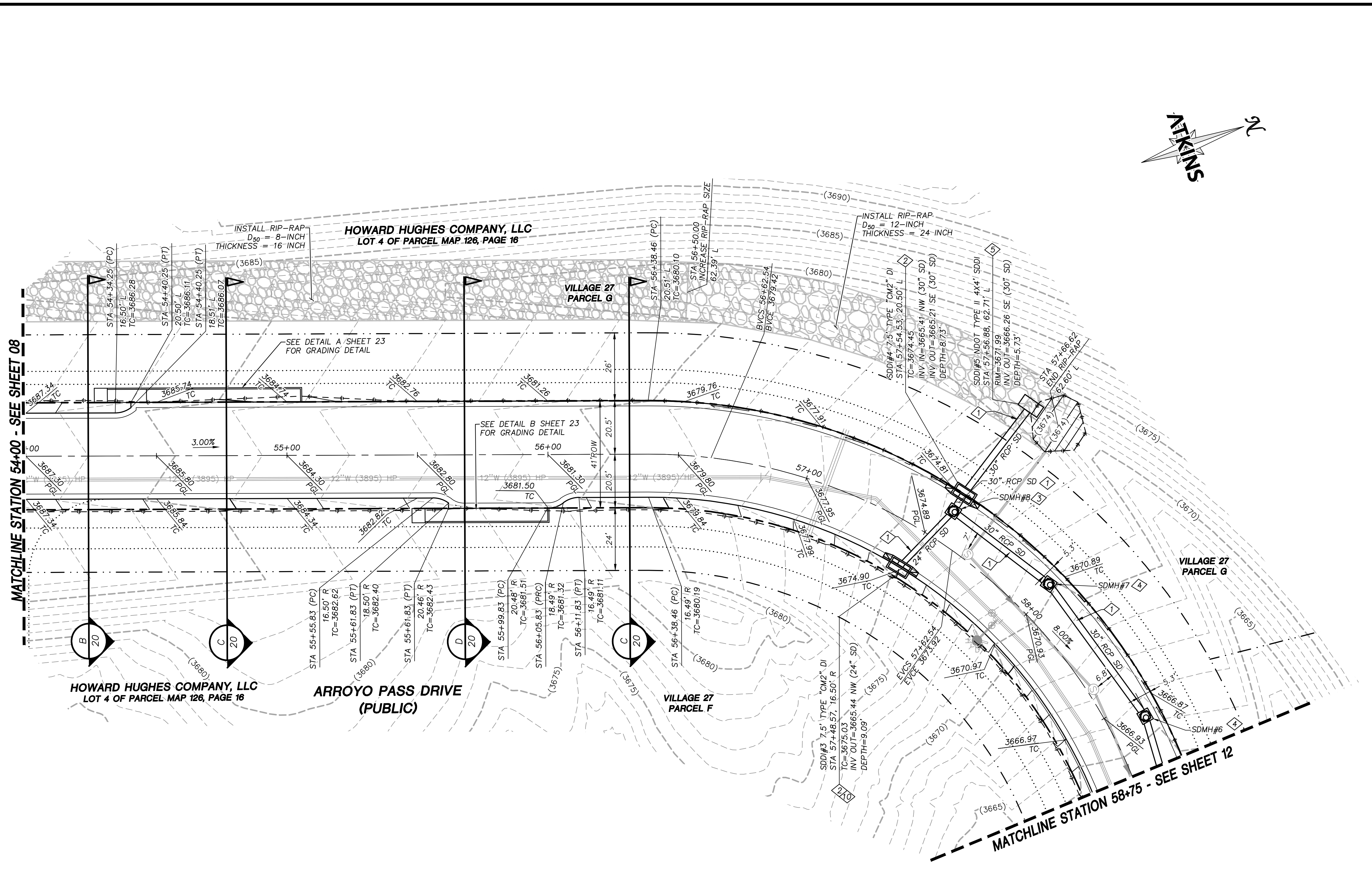


C:\Users\larr9542\AppData\Local\Temp\AtkPublish_68040\181624-08-GRAD-C1.dwg LAYOUT: 10 ROADWAY GRADING PLAN Nov. 28, 2023 - 2:32PM



- ### STORM DRAIN CONSTRUCTION NOTES
1. INSTALL STORM DRAIN. SEE ROADWAY PLAN AND PROFILE SHEETS FOR ADDITIONAL STORM DRAIN NOTES AND INFORMATION.
 2. INSTALL TYPE "CM2" DROP INLET PER CCAUSD #412.1 & #421
 3. INSTALL TYPE II SD MANHOLE PER CCAUSD #405.2 WITH 30" RING AND COLLAR
 4. INSTALL TYPE III SD MANHOLE PER CCAUSD #406.1
 5. INSTALL NDOT TYPE 2 DROP INLET PER NDOT R-4.2.1
 6. REMOVE NDOT TYPE 2 DROP INLET AND CONNECT TO TYPE II SD MANHOLE
 7. INSTALL MODIFIED TYPE "CM2" DROP INLET PER CCAUSD #412.1, #421, AND DEEP DROP INLET DETAIL G SHEET 21
 8. STRUCTURE SHALL BE TREATED WITH WATERTIGHT/EPOXY PER UDACS 02.22.01B
 9. REMOVE EXISTING RIP-RAP
 10. WATERTIGHT STRUCTURE PER DEEP DROP INLET NOTE THIS SHEET

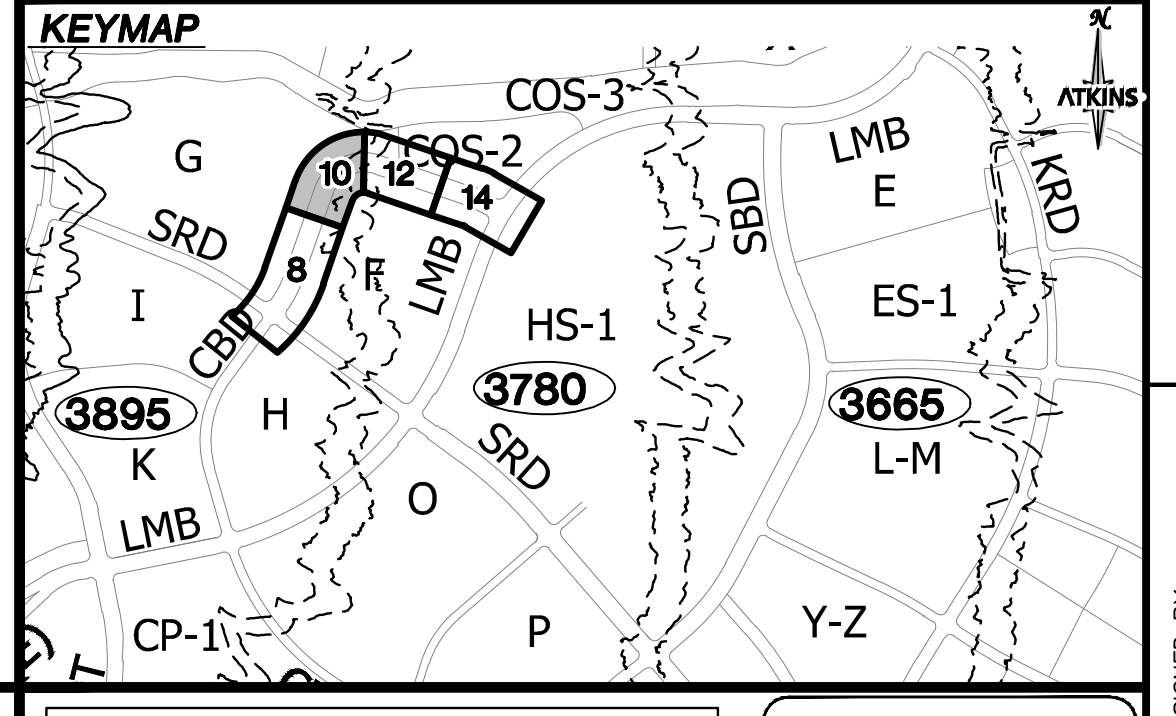
REV.	DESCRIPTION	BY	DATE	APPROVAL

ATKINS
 2270 Corporate Circle Suite 200
 Henderson, Nevada 89074
 Telephone: +1.702.263.7275
 Fax: +1.702.263.7200

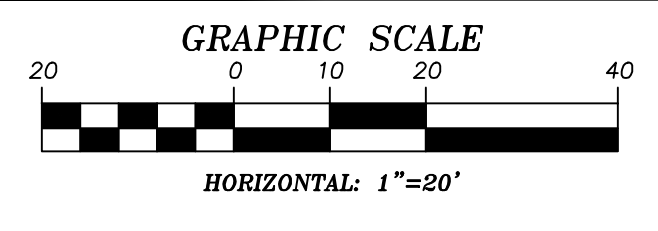
SUMMERLIN

DROP INLET NOTE
 WHERE 10 FEET PARALLEL SEPARATION IS NOT PRACTICABLE SEPARATION SHOULD NEVER BE LESS THAN 5 FEET AND DROP INLET SHOULD BE CAST-IN-PLACE MONOLITHIC POUR OR WATERSTOP BETWEEN SLAB WALLS, BASE, WALLS AND TOP TO BE CONSTRUCTED WITH WATERSTOPS. CENTER BULB, OR FLAT STRIP (VINYLEX, GREENSTREAK PLASTIC PRODUCTS OR APPROVED EQUAL).

INTERIM FLOOD CONTROL FACILITIES NOTE
 ALL OFFSITE INTERIM FLOOD CONTROL FACILITIES SUCH AS BUT NOT LIMITED TO BERMS, DITCHES AND TEMPORARY SUMP ARE PRIVATELY OWNED AND TO BE PRIVATELY MAINTAINED BY THE HOWARD HUGHES COMPANY.



SUMMERLIN WEST VILLAGE 27
 ARROYO PASS DRIVE
 SUNSET RUN DRIVE TO LAKE MEAD BOULEVARD
 ROADWAY GRADING PLAN
 STA 54+00 TO STA 58+75



GRADING PLAN CERTIFICATION
 JORDAN TORRELLA PE#26305 DATE _____
 CERTIFY THAT THIS GRADING PLAN IS IN CONFORMANCE WITH THE APPROVED DRAINAGE STUDY FOR THIS SITE ON FILE AT THE CITY OF LAS VEGAS FOR THIS PROJECT.
 DS# _____

BASIS OF BEARING
 GRID NORTH AS DEFINED BY THE CENTRAL MERIDIAN OF THE NEVADA COORDINATE REFERENCE SYSTEM (NORS), LAS VEGAS HIGH ELEVATION ZONE, NORTH AMERICAN DATUM OF 1983; SAID MERIDIAN BEING COINCIDENT WITH 114°58' WEST OF THE GREENWICH MERIDIAN.

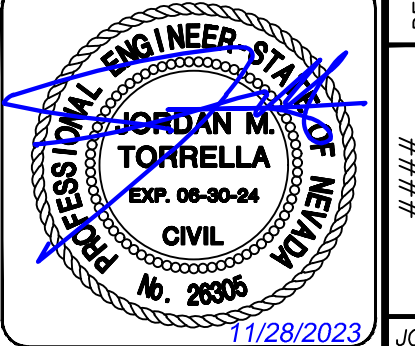
BENCHMARK
 CITY OF LAS VEGAS BENCHMARK: D368 (REVISED 2008)
 NAVD89 ELEVATION: 989.574 METERS (3,246.63 FEET)
 FND USCGS DISC SET IN ROCK RIDGE 150' SOUTH OF CHARLESTON BLVD. & WEST OF DETENTION BASIN.
 T21S,R59E,S03

FAST
 Call before you Dig
 1-702-432-5300

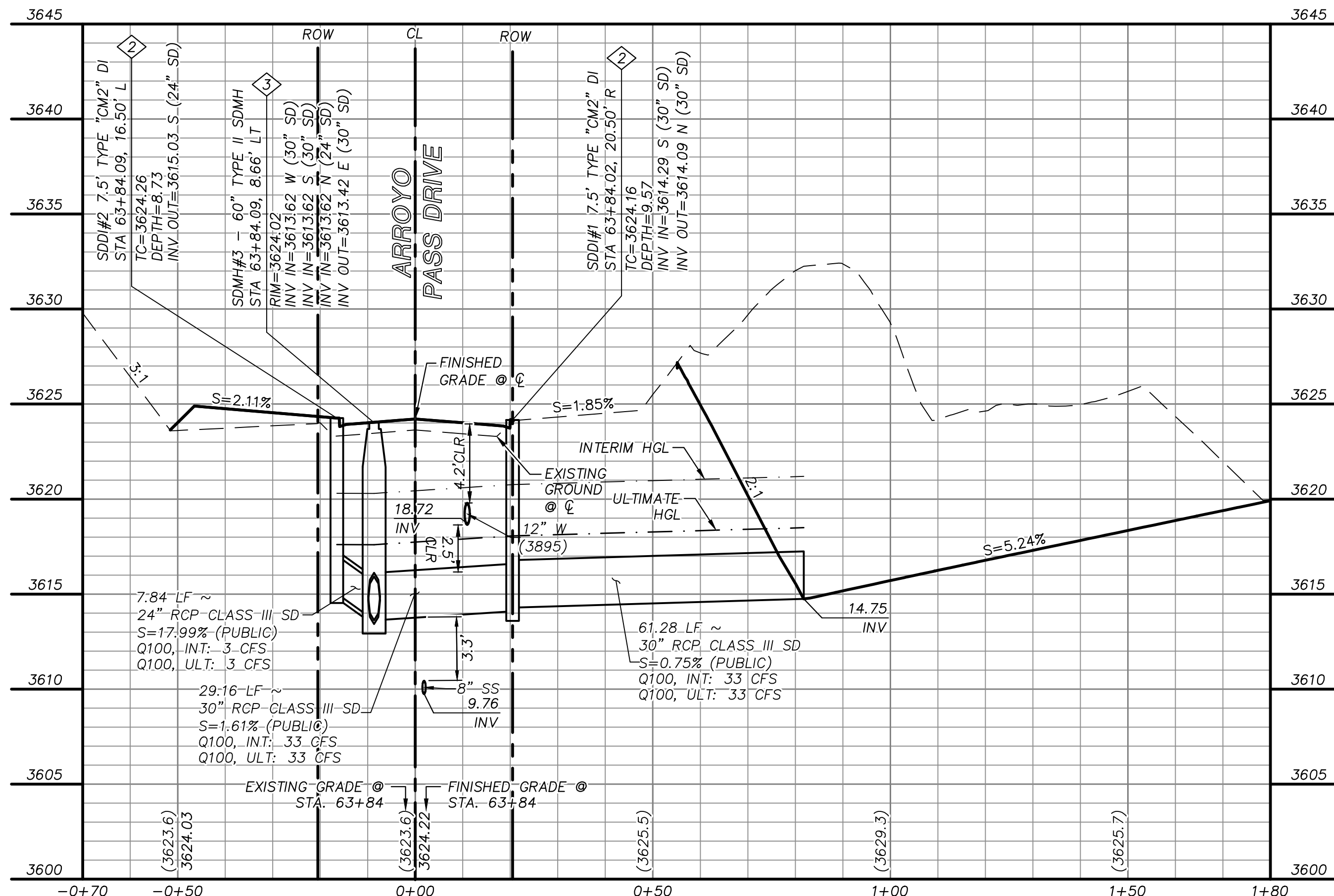
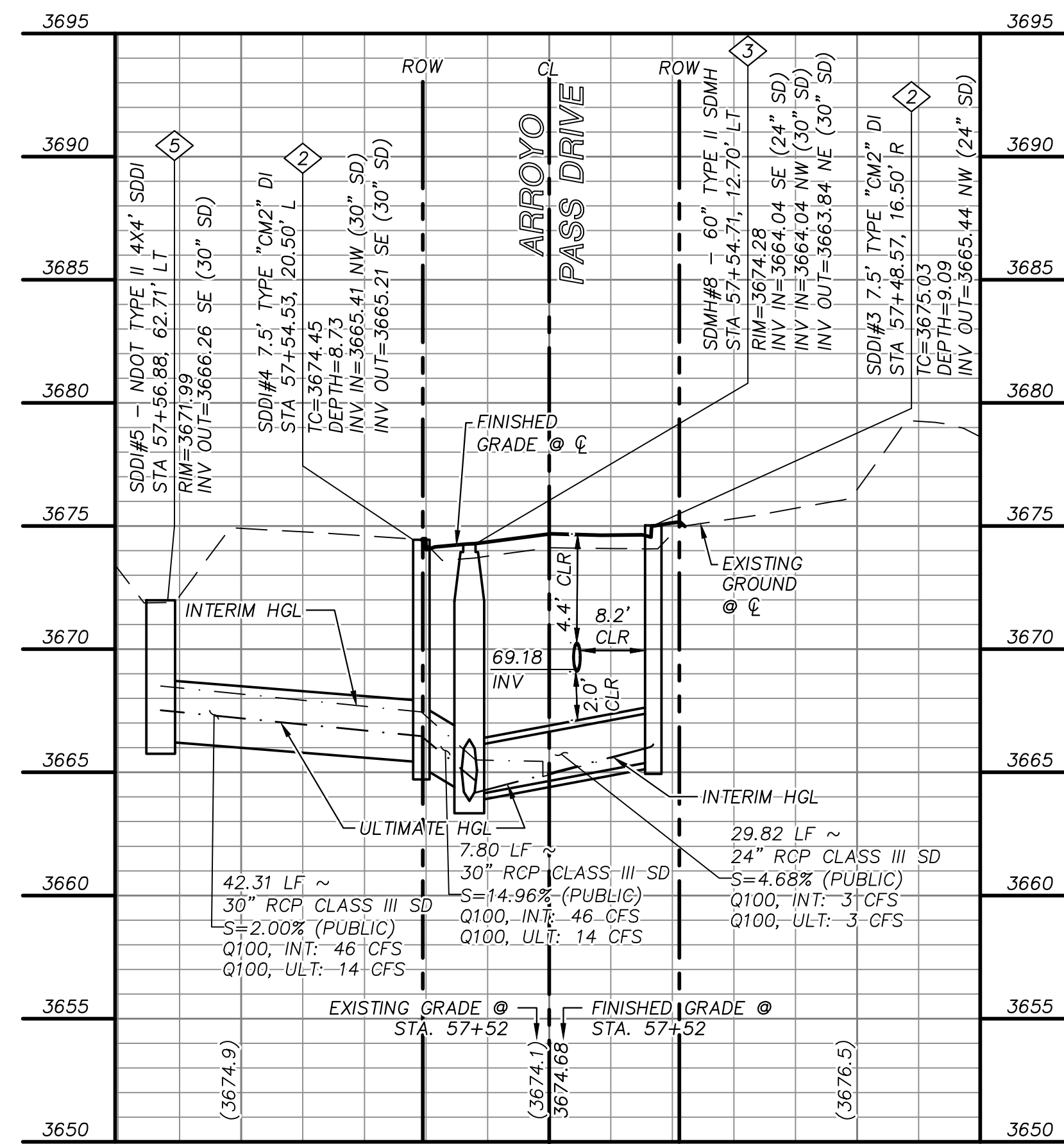
811
 Call before you Dig
 1-800-642-2444

CALL BEFORE YOU DIG
 1-702-227-2929

UTILITY LOCATIONS SHOWN HEREON ARE APPROXIMATE ONLY. IT SHALL BE THE CONTRACTORS RESPONSIBILITY TO DETERMINE THE EXACT VERTICAL AND HORIZONTAL LOCATION OF ALL EXISTING UNDERGROUND UTILITIES PRIOR TO COMMENCING CONSTRUCTION. NO REPRESENTATION IS MADE THAT ALL EXISTING UTILITIES ARE SHOWN HEREON. THE ENGINEER ASSUMES NO RESPONSIBILITY FOR UTILITIES NOT SHOWN OR UTILITIES NOT SHOWN IN THEIR PROPER LOCATION.

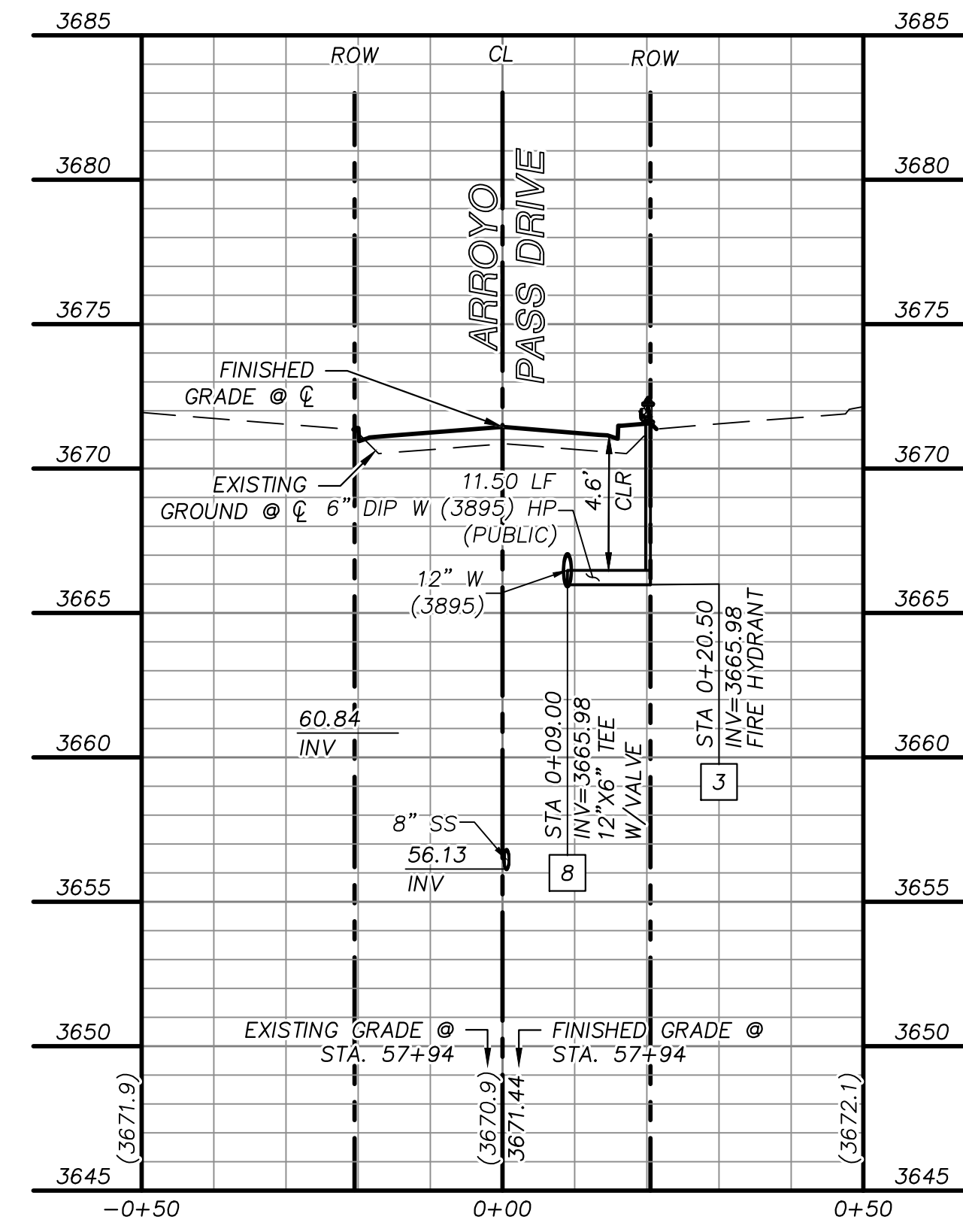
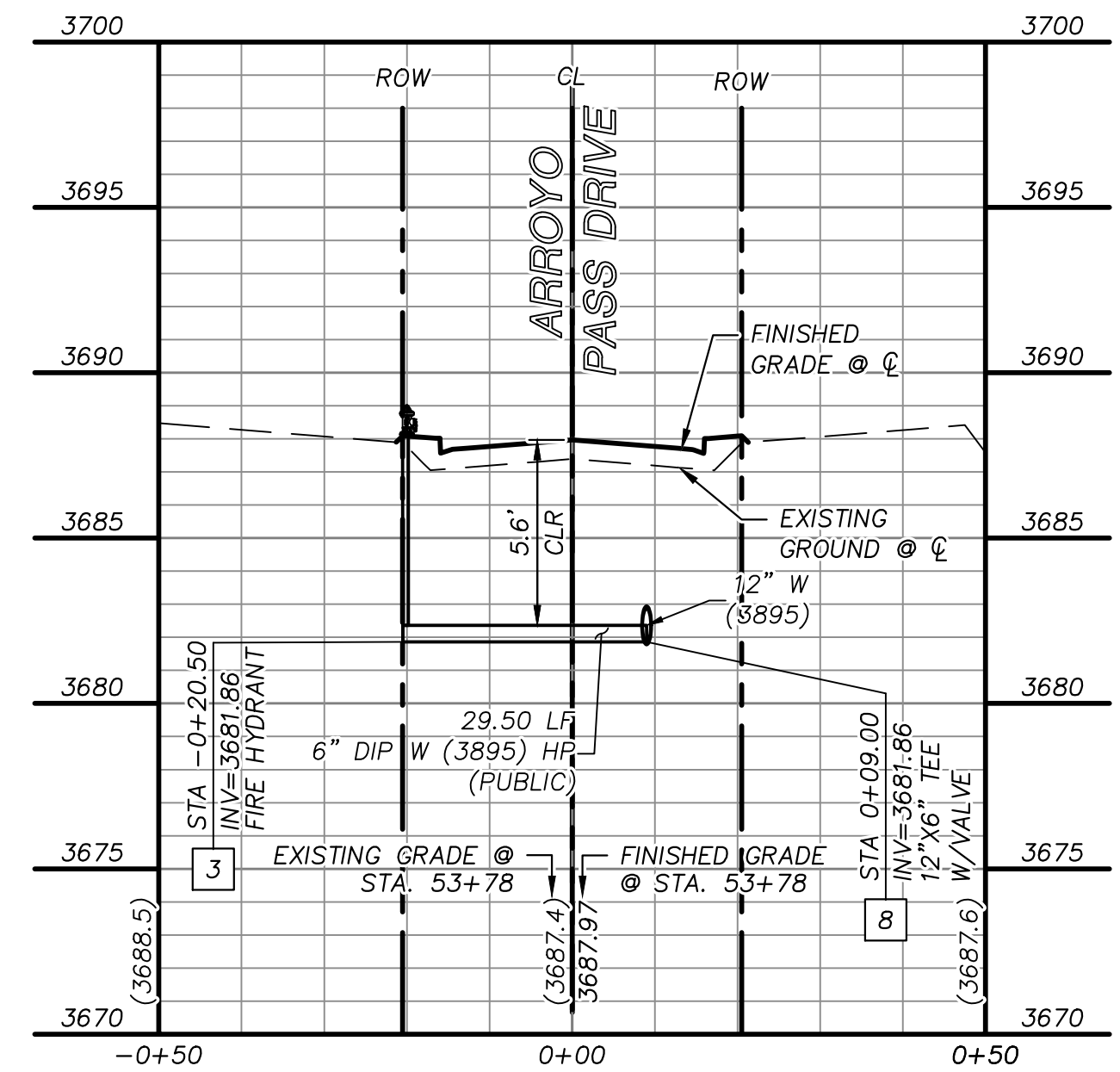


DESIGNED BY: A. OLIVARES
 DRAWN BY: C. HONEY
 CHECKED BY: J. TORRELLA
 DATE: NOVEMBER, 2023
 DRAWING NO: 10/23
 JOB NO. 100081624



STORM DRAIN LATERAL 1
 APD STA. 57+52 SEE SHEET 11

STORM DRAIN LATERAL 2
 APD STA. 63+84 SEE SHEET 15



WATER LATERAL 1
 APD STA. 53+78 SEE SHEET 9

WATER LATERAL 2
 APD STA. 57+94 SEE SHEET 11

STORM DRAIN CONSTRUCTION NOTES

- 1 INSTALL STORM DRAIN. SEE ROADWAY PLAN AND PROFILE SHEETS FOR ADDITIONAL STORM DRAIN NOTES AND INFORMATION.
- 2 INSTALL TYPE "CM2" DROP INLET PER CCAUSD #412.1 & #421
- 3 INSTALL TYPE II SD MANHOLE PER CCAUSD #405.2 WITH 30" RING AND COLLAR
- 4 INSTALL TYPE III SD MANHOLE PER CCAUSD #406.1
- 5 INSTALL NDOT TYPE 2 DROP INLET PER NDOT R-4.2.1
- 6 REMOVE NDOT TYPE 2 DROP INLET AND CONNECT TO TYPE II SD MANHOLE
- 7 INSTALL MODIFIED TYPE "CM2" DROP INLET PER CCAUSD #412.1, #421, AND DEEP DROP INLET DETAIL G SHEET 21
- 8 STRUCTURE SHALL BE TREATED WITH WATERTIGHT/EPOXY PER UDACS 02.22.01B
- 9 REMOVE EXISTING RIP-RAP
- 10 WATERTIGHT STRUCTURE PER DEEP DROP INLET NOTE THIS SHEET

SEWER CONSTRUCTION NOTES

- 1 INSTALL STANDARD MANHOLE WITH WATERTIGHT JOINTS (PER DCSWCS SD-1, SD-3, SD-4, AND SD-5) WITH SINGLE 48" LID.
- 2 INSTALL SEWER MAIN PER DCSWCS SD-17
- 3 STUB AND CAP SEWER PIPE. PLACE MARKER BALL AND 4"x4" POST, DOUGLAS FIR, OVER END OF PIPE AND INSTALL THRUST BLOCK (1 CUBIC FT. MINIMUM).
- 4 REMOVE EXISTING CAP AND CONNECT TO EXISTING SS LINE

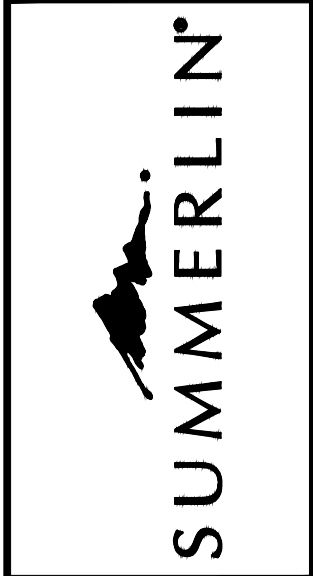
WATERLINE CONSTRUCTION NOTES

- 1 INSTALL WATER MAIN PER UDACS PLATES #17, #19 AND SECTION 2.15
- 2 INSTALL GATE VALVE PER UDACS PLATE #39 AND SECTION 2.15
- 3 INSTALL FIRE HYDRANT WITH APPURTENANCES (CONCRETE PAD, LATERAL, VALVE, AND TEE) PER UDACS PLATES #39, #40, AND SECTION 2.15 SEE DETAIL F ON SHEET 21
- 4 INSTALL CAP AND 2" MANUAL BLOWOFF ASSEMBLY PER UDACS PLATE #36
- 5 INSTALL 45° HORIZONTAL BEND PER UDACS SECTION 2.15
- 6 INSTALL 11.25° HORIZONTAL BEND PER UDACS SECTION 2.15
- 7 REMOVE CAP AND 2" BLOWOFF AND CONNECT TO EXISTING WATERLINE STUB
- 8 INSTALL TEE W/ VALVE PER UDACS PLATES #30, #39, AND SECTION 2.15
- 9 INSTALL 22.5° VERTICAL BEND PER UDACS PLATE #31
- 10 BACKFILL TRENCH ZONE WITH CLASS I CLSM

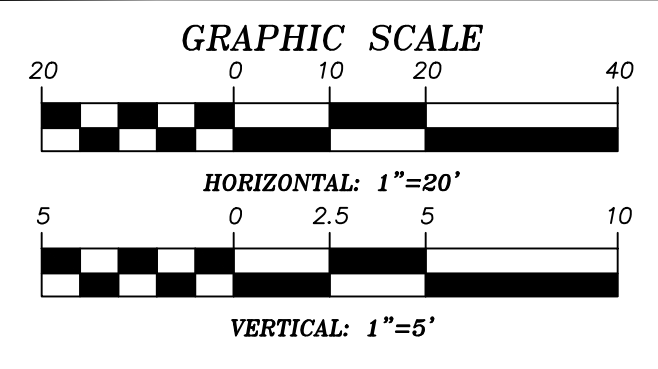
ROADWAY CONSTRUCTION NOTES

- 1 CONSTRUCT PLANTMIX BITUMINOUS SURFACE OVER TYPE II AGGREGATE BASE SEE SHEET 20 FOR TYPICAL PAVEMENT SECTION.
- 2 CONSTRUCT "L" TYPE CURB AND GUTTER PER CCAUSD #216
- 3 INSTALL SCHEDULE 40 PVC IRRIGATION SLEEVES SEE DETAIL H ON SHEET 21
- 4 FUTURE SIDEWALK BY OTHERS

REV.	DESCRIPTION	BY	DATE	APPROVAL



SUMMERLIN WEST VILLAGE 27
 ARROYO PASS DRIVE
 SUNSET RUN DRIVE TO LAKE MEAD BOULEVARD
STORM DRAIN LATERALS



APPROVED FOR CONSTRUCTION
 LAS VEGAS VALLEY WATER DISTRICT PLANNING AND ENGINEERING SERVICES
 PROJECT NO. _____ FIRST APPROVED DATE: _____
 LVVWD APPROVED FIRE FLOW _____ GPM AT 20 PSI RESIDUAL

BASIS OF BEARING
 GRID NORTH AS DEFINED BY THE CENTRAL MERIDIAN OF THE NEVADA COORDINATE REFERENCE SYSTEM (NCRS), LAS VEGAS HIGH ELEVATION ZONE, NORTH AMERICAN DATUM OF 1983; SAID MERIDIAN BEING COINCIDENT WITH 114°58' WEST OF THE GREENWICH MERIDIAN.

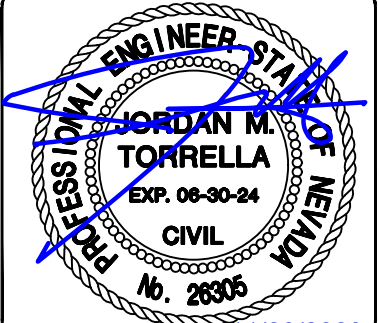
BENCHMARK
 CITY OF LAS VEGAS BENCHMARK: D368 (REVISED 2008)
 NAVD89 ELEVATION: 989.574 METERS (3,246.63 FEET)
 FND USCSGS DISC SET IN ROCK RIDGE 150' SOUTH OF CHARLESTON BLVD. & WEST OF DETENTION BASIN.
 T215,R59E,S03

FAST
 Call before you Dig
 1-702-432-5300

811
 Call before you Dig
 1-800-642-2444

CALL BEFORE YOU DIG
 1-702-227-2929

UTILITY LOCATIONS SHOWN HEREON ARE APPROXIMATE ONLY. IT SHALL BE THE CONTRACTOR'S RESPONSIBILITY TO DETERMINE THE EXACT VERTICAL AND HORIZONTAL LOCATION OF ALL EXISTING UNDERGROUND UTILITIES PRIOR TO COMMENCING CONSTRUCTION. NO REPRESENTATION IS MADE THAT ALL EXISTING UTILITIES ARE SHOWN HEREON. THE ENGINEER ASSUMES NO RESPONSIBILITY FOR UTILITIES NOT SHOWN OR UTILITIES NOT SHOWN IN THEIR PROPER LOCATION.



DESIGNED BY: A. OLIVARES
 DRAWN BY: C. HONEY
 CHECKED BY: J. TORRELLA
 DATE: NOVEMBER, 2023
 DRAWING NO. 16/23
 JOB NO. 100081624

C:\pwwork\atkinson\01\ms66210\161624-16-LA.dwg LAYOUT: 16-STORM DRAIN LATERALS Nov. 28, 2023 - 2:27PM