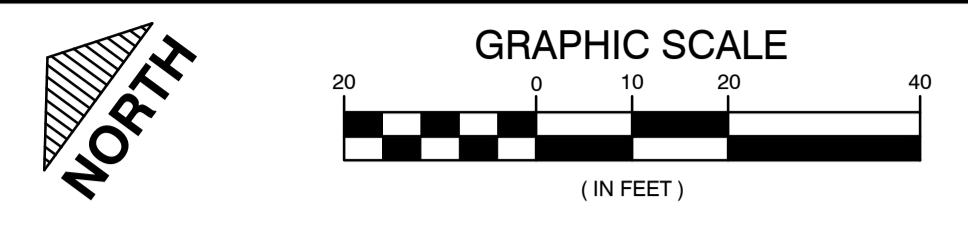
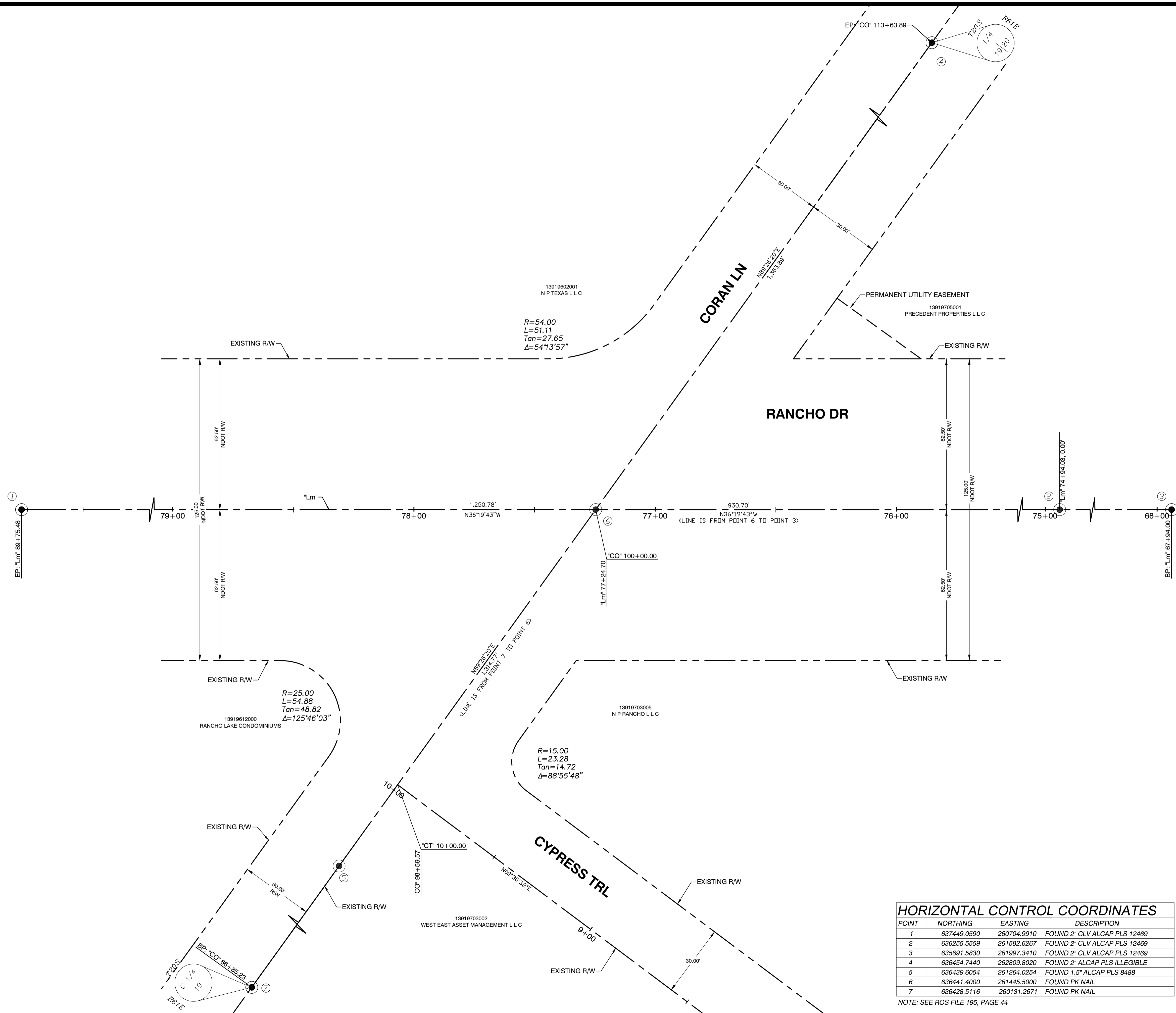


6/29/22 C:\PW\WORKDIR\DEN003\JEG_MILLER\HC\0962956\H170214-HC-P1.DWG



HORIZONTAL CONTROL KEY NOTES

1. A POST CONSTRUCTION RECORD OF SURVEY (ROS) SHALL BE PERFORMED BY THE CONTRACTOR AND SUBMITTED TO THE CITY OF LAS VEGAS SURVEY RIGHT-OF-WAY DIVISION.
2. POST CONSTRUCTION ROS SHALL SHOW THE RE-ESTABLISHED SURVEY MONUMENTS LOST DUE TO CONSTRUCTION.

CALL BEFORE CONSTRUCTION

BEFORE YOU DIG	USA NORTH	811 OR 800-227-2600
BEFORE YOU UNDERGROUND	CLARK COUNTY TRAFFIC OPERATIONS	702-455-7511
	CITY OF LAS VEGAS T.E.F.O.	702-229-6331
BEFORE YOU OVERHEAD	NV ENERGY	702-227-2929

BENCHMARK

CITY OF LAS VEGAS BENCHMARK NO. NLV0119E4 BEING A RIVET AND PLATE IN TOP OF CURB AT NORTHWEST CORNER OF ALLEN LANE AND CORAN LANE.
ELEVATION: 2128.14 FEET OR 648.658 METERS, NAVD88

BASIS OF BEARING

GRID NORTH AS DEFINED BY THE CENTRAL MERIDIAN OF THE NEVADA COORDINATE REFERENCE SYSTEM (NCRS), LAS VEGAS AND LAS VEGAS HIGH ELEVATION ZONES, NORTH AMERICAN DATUM OF 1983 (NAD83); SAID MERIDIAN BEING COINCIDENT WITH 114°58' WEST OF THE GREENWICH MERIDIAN.

NEVADA COORDINATE REFERENCE SYSTEM
LAS VEGAS ZONE - NAD83 (2011) EPOCH 2010.0
COORDINATE SYSTEM DEFINITION STATEMENT

COORDINATE SYSTEM DEFINITION STATEMENT
DATUM/REFERENCE FRAME: NAD83 (2011) EPOCH 2010.0
MAPPING PROJECTION PARAMETERS: NEVADA COORDINATE REFERENCE SYSTEM (NCRS)
VEGAS ZONE
TRANSVERSE MERCATOR

ZONE: 36° 15' 00" N
PROJECTION TYPE: STANDARD PARALLEL (AND LATITUDE OF GRID ORIGIN):
LONGITUDE OF CENTRAL MERIDIAN: 114° 58' 00" W
LINEAR UNIT: US SURVEY FOOT (SFT)
FALSE NORTHING: 656,166.6667 SFT (200,000.00 m)
FALSE EASTING: 328,083.333 SFT (100,000.00 m)
SCALE FACTOR AT CENTRAL MERIDIAN: 1.0001 (EXACT)

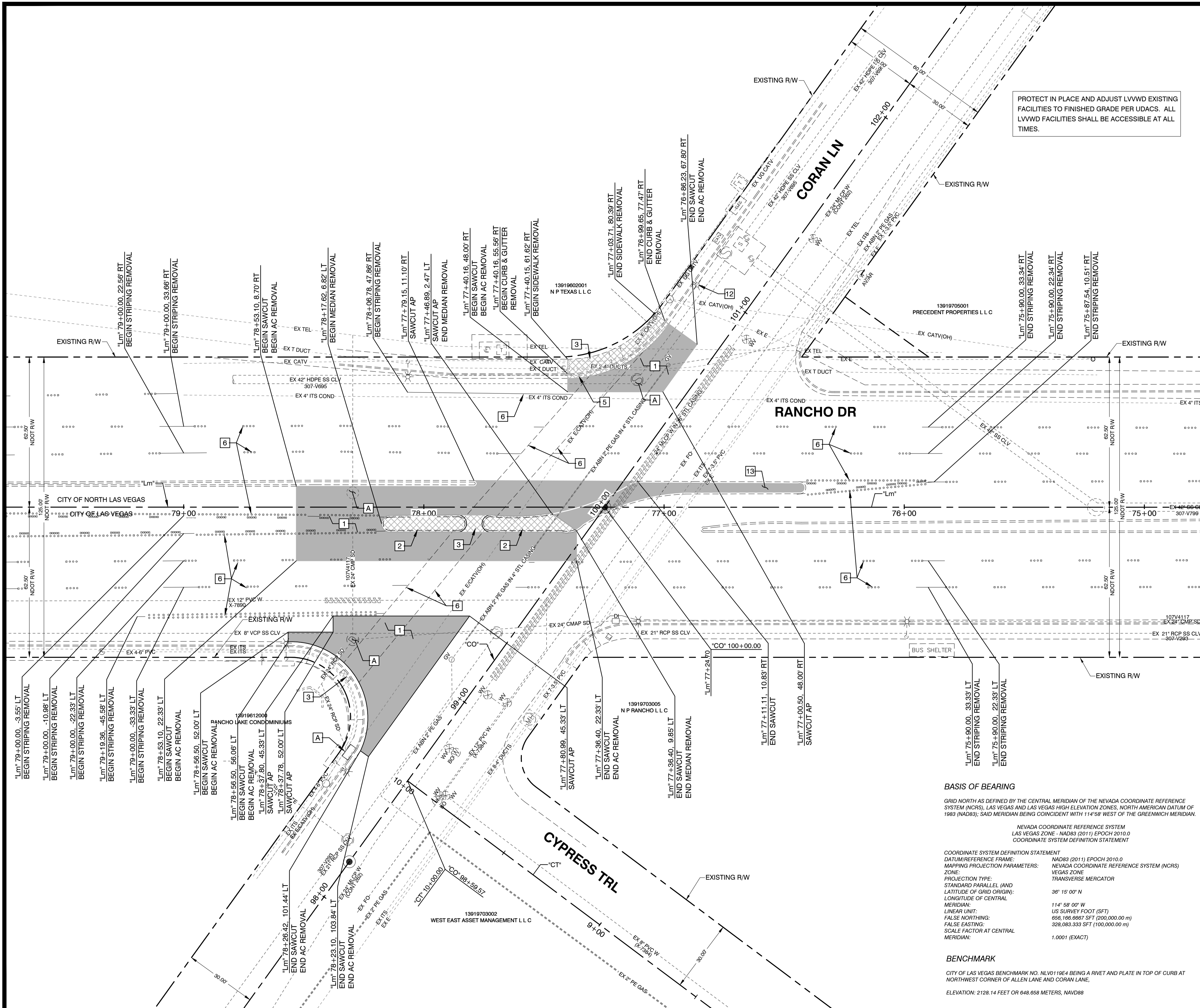
HORIZONTAL CONTROL COORDINATES

POINT	NORTHING	EASTING	DESCRIPTION
1	637449.0590	260704.9910	FOUND 2" CLV ALCAP PLS 12469
2	636255.5559	261582.6267	FOUND 2" CLV ALCAP PLS 12469
3	635691.5830	261997.3410	FOUND 2" CLV ALCAP PLS 12469
4	636454.7440	262809.8020	FOUND 2" ALCAP PLS ILLEGIBLE
5	636439.6054	261264.0254	FOUND 1.5" ALCAP PLS 8488
6	636441.4000	261445.5000	FOUND PK NAIL
7	636428.5116	260131.2671	FOUND PK NAIL

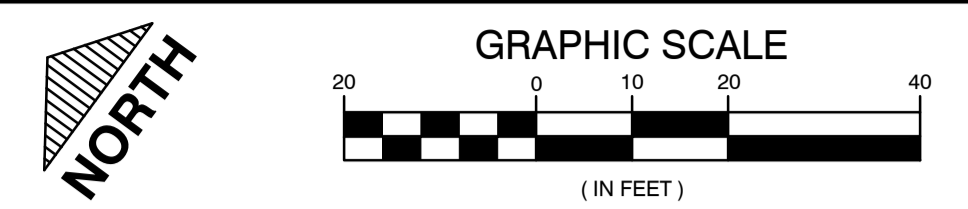
NOTE: SEE ROS FILE 195, PAGE 44

		PREPARED BY: ZVR DESIGNED BY: MA DRAWN BY: BCT CHECKED BY:
PREPARED FOR: CITY OF LAS VEGAS	BID# 22.68236 DATE: 27 JUNE 2022 SUBMITTAL STAGE: FINAL	NO. DATE _____ _____
CITY WIDE PEDESTRIAN SAFETY IMPROVEMENTS PHASE 1 HORIZONTAL CONTROL PLAN RANCHO & CORAN		
TITLE SHEET HC-02 12 OF 28 DRAWING NO. 107V-7138		6/29/22 SHEET

8/19/22 C:\PW_WORKDIR\DEN003\JEG_MILLER\HC\0962959\H70214-DM.P1.DWG



PROTECT IN PLACE AND ADJUST LVVWD EXISTING FACILITIES TO FINISHED GRADE PER UDACS. ALL LVVWD FACILITIES SHALL BE ACCESSIBLE AT ALL TIMES.



CALL BEFORE CONSTRUCTION		
BEFORE YOU DIG	USA NORTH	811 OR 800-227-2600
BEFORE YOU UNDERGROUND	CLARK COUNTY TRAFFIC OPERATIONS	702-455-7511
	CITY OF LAS VEGAS T.E.F.O.	702-229-6331
BEFORE YOU OVERHEAD	NV ENERGY	702-227-2929

- CONSTRUCTION KEY NOTES**
- [A] PROTECT IN PLACE.
 - [1] REMOVE EXISTING ASPHALT.
 - [2] REMOVE EXISTING CONCRETE MEDIAN.
 - [3] REMOVE EXISTING CONC SIDEWALK.
 - [4] REMOVE EXISTING CONCRETE CURB & GUTTER.
 - [5] REMOVE EXISTING LANE STRIPING.
 - [6] REMOVE EX. LUMINAIRE
 - [13] REMOVE EXISTING MEDIAN ISLAND PAVING

DEMOLITION AND REMOVAL LEGEND

LIMITS OF AC AND AGGREGATE BASE REMOVAL	[Pattern]
LIMITS OF CURB & GUTTER, SIDEWALK, VALLEY GUTTER AND/OR DRIVEWAY REMOVAL	[Pattern]
LIMITS OF MULCH REMOVAL	[Pattern]

**FOR ROADWAY PLAN
SEE SHEET RD-02**

**FOR SIGNING & MARKING PLAN
SEE SHEET SM-02**

**FOR TRAFFIC SIGNAL PLAN
SEE SHEET TS-02**

BASIS OF BEARING
GRID NORTH AS DEFINED BY THE CENTRAL MERIDIAN OF THE NEVADA COORDINATE REFERENCE SYSTEM (NCRS); LAS VEGAS AND LAS VEGAS HIGH ELEVATION ZONES, NORTH AMERICAN DATUM OF 1983 (NAD83); SAID MERIDIAN BEING COINCIDENT WITH 114°58' WEST OF THE GREENWICH MERIDIAN.

NEVADA COORDINATE REFERENCE SYSTEM
LAS VEGAS ZONE - NAD83 (2011) EPOCH 2010.0
COORDINATE SYSTEM DEFINITION STATEMENT

COORDINATE SYSTEM DEFINITION STATEMENT
DATUM/REFERENCE FRAME: NAD83 (2011) EPOCH 2010.0
MAPPING PROJECTION PARAMETERS: NEVADA COORDINATE REFERENCE SYSTEM (NCRS)
ZONE: VEGAS ZONE
PROJECTION TYPE: TRANSVERSE MERCATOR
STANDARD PARALLEL (AND LATITUDE OF GRID ORIGIN): 38° 15' 00" N
LONGITUDE OF CENTRAL MERIDIAN: 114° 58' 00" W
LINEAR UNIT: US SURVEY FOOT (SFT)
FALSE NORTHING: 656,166.6667 SFT (200,000.00 m)
FALSE EASTING: 328,083.3333 SFT (100,000.00 m)
SCALE FACTOR AT CENTRAL MERIDIAN: 1.0001 (EXACT)

BENCHMARK
CITY OF LAS VEGAS BENCHMARK NO. NLV0119E4 BEING A RIVET AND PLATE IN TOP OF CURB AT NORTHWEST CORNER OF ALLEN LANE AND CORAN LANE.
ELEVATION: 2128.14 FEET OR 648.658 METERS, NAVD88

APPROVED FOR CONSTRUCTION
SIGNATURE ON FILE

LAS VEGAS VALLEY WATER DISTRICT PLANNING AND ENGINEERING SERVICES
PROJECT NO. 126070 FIRST APPROVED DATED: 01/03/2023

PREPARED BY: **Jacobs**
1301 N. GREEN VALLEY PKWY, SUITE 200
HENDERSON, NV 89074
(702) 938-5400

PREPARED FOR: **CITY OF LAS VEGAS**
H# 68236
DATE: 27 JUNE 2022
SUBMITTAL STAGE: **FINAL**

CITY WIDE PEDESTRIAN SAFETY IMPROVEMENTS PHASE 1
DEMOLITION/REMOVAL PLAN
RANCHO & CORAN

SHEET: **DM-02**
13 OF 28
DRAWING NO: **107V-7138**

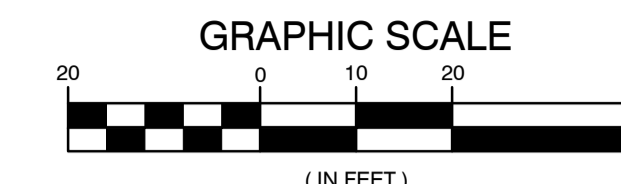
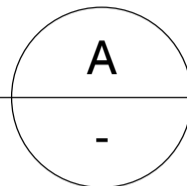
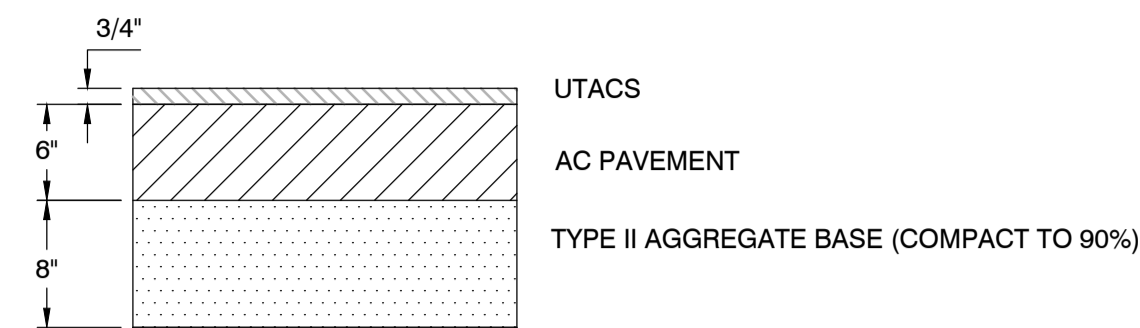
DESIGNED BY: ZVR
DRAWN BY: MA
CHECKED BY: BCT

NO.	DATE	REVISIONS

8/19/22 C:\PW_WORKDIR\DEN003\JEG_MILLER\HCD0962959\H170214-RD-P1.DWG

TYPICAL PAVEMENT SECTION

NOT TO SCALE



CALL BEFORE CONSTRUCTION		
BEFORE YOU DIG	USA NORTH	811 OR 800-227-2600
BEFORE YOU UNDERGROUND	CLARK COUNTY TRAFFIC OPERATIONS	702-455-7511
	CITY OF LAS VEGAS T.E.F.O.	702-229-6331
BEFORE YOU OVERHEAD	NV ENERGY	702-227-2929

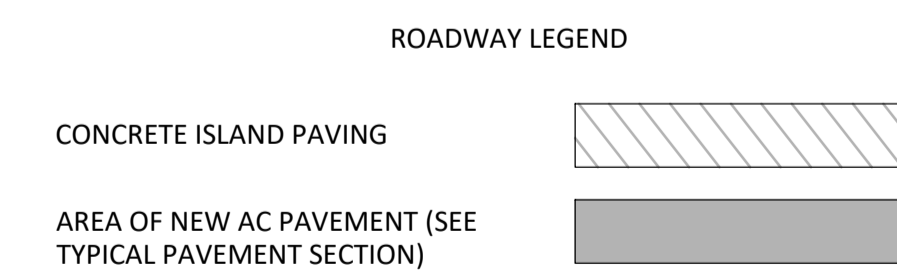
CONSTRUCTION KEY NOTES

- 6 CONSTRUCT ASPHALT PAVEMENT PER TYPICAL SECTION
- 12 CONSTRUCT CONCRETE LANDING W/ TACTILE WARNING STRIP PER USD 235
- 15 CONSTRUCT MODIFIED TYPE R PEDESTRIAN RAIL DETAIL A SHEET RD-02B
- 17 CONSTRUCT 42" ORNAMENTAL FENCE PER DETAIL D SHEET RD-02A
- 27 ADJUST STORM DRAIN MANHOLE TO FINISHED GRADE PER USD 408
- 34 PROTECT IN PLACE
- 38 PERPETUATE EXISTING SURVEY MONUMENT(S)

FOR REMOVAL/DEMOLITION PLAN SEE SHEET DM-02

FOR SIGNING & MARKING PLAN SEE SHEET SM-02

FOR TRAFFIC SIGNAL PLAN SEE SHEET TS-02



BASIS OF BEARING
 GRID NORTH AS DEFINED BY THE CENTRAL MERIDIAN OF THE NEVADA COORDINATE REFERENCE SYSTEM (NCRS), LAS VEGAS AND LAS VEGAS HIGH ELEVATION ZONES, NORTH AMERICAN DATUM OF 1983 (NAD83); SAID MERIDIAN BEING COINCIDENT WITH 114°58' WEST OF THE GREENWICH MERIDIAN.

NEVADA COORDINATE REFERENCE SYSTEM
 LAS VEGAS ZONE - NAD83 (2011) EPOCH 2010.0
 COORDINATE SYSTEM DEFINITION STATEMENT

DATUM/REFERENCE FRAME: NAD83 (2011) EPOCH 2010.0
 MAPPING PROJECTION PARAMETERS: NEVADA COORDINATE REFERENCE SYSTEM (NCRS) VEGAS ZONE TRANSVERSE MERCATOR
 PROJECTION TYPE: STANDARD PARALLEL (AND LATITUDE OF GRID ORIGIN): 36° 15' 00" N
 LONGITUDE OF CENTRAL MERIDIAN: 114° 58' 00" W
 LINEAR UNIT: US SURVEY FOOT (SFT)
 FALSE NORTHING: 656,166.6667 SFT (200,000.00 m)
 FALSE EASTING: 328,083.3333 SFT (100,000.00 m)
 SCALE FACTOR AT CENTRAL MERIDIAN: 1.0001 (EXACT)

BENCHMARK
 CITY OF LAS VEGAS BENCHMARK NO. NLV0119E4 BEING A RIVET AND PLATE IN TOP OF CURB AT NORTHWEST CORNER OF ALLEN LANE AND CORAN LANE.
 ELEVATION: 2128.14 FEET OR 648.658 METERS, NAVD88

APPROVED FOR CONSTRUCTION
 SIGNATURE ON FILE
 LAS VEGAS VALLEY WATER DISTRICT PLANNING AND ENGINEERING SERVICES
 PROJECT NO. 126070 FIRST APPROVED DATED: 01/03/2023

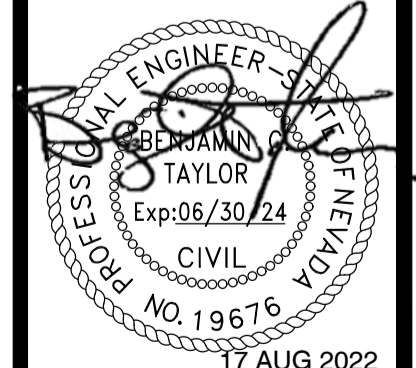
NO.	DATE	REVISIONS

PREPARED BY
Jacobs
 1301 N. GREEN VALLEY PKWY, SUITE 200
 HENDERSON, NV 89074
 (702) 938-5400

PREPARED FOR
CITY OF LAS VEGAS
 H# 68236
 BID# 22.68236
 DATE: 27 JUNE 2022
 DESIGNED BY: ZVR
 DRAWN BY: MA
 CHECKED BY: BCT

CITY WIDE PEDESTRIAN SAFETY IMPROVEMENTS PHASE 1
ROADWAY PLAN
RANCHO DR & CORAN LN

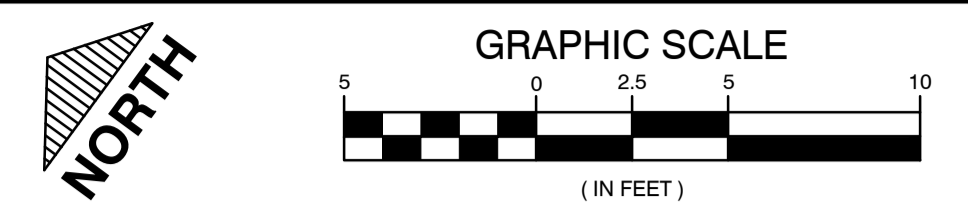
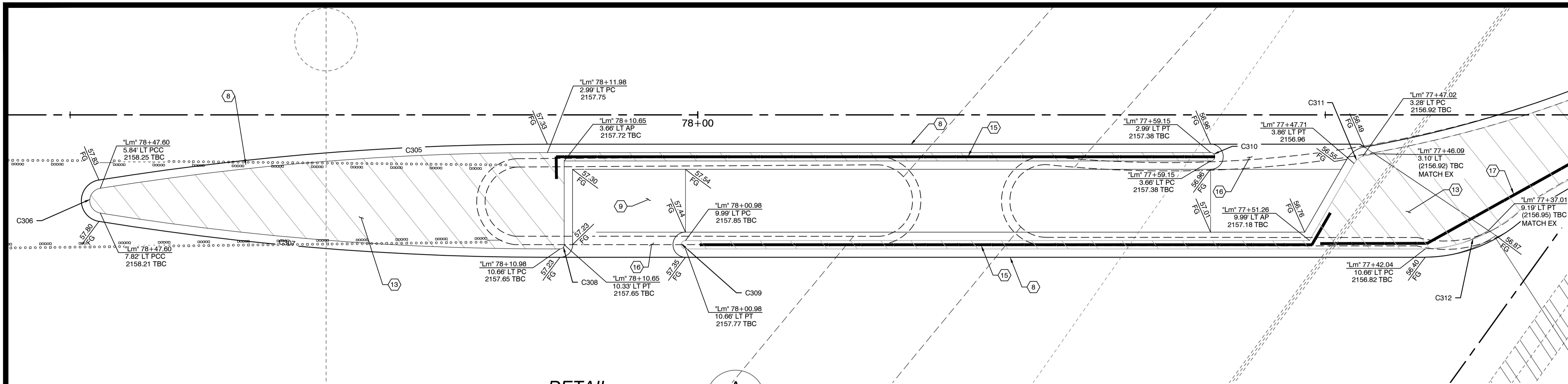
TITLE SHEET



SHEET
RD-02
 14 OF 28
 DRAWING NO.
107V-7138

17 AUG 2022

8/19/22 C:\PW_WORKDIR\END03\JEG_MILLER\HCD0962959\H170214-RD-P1.DWG



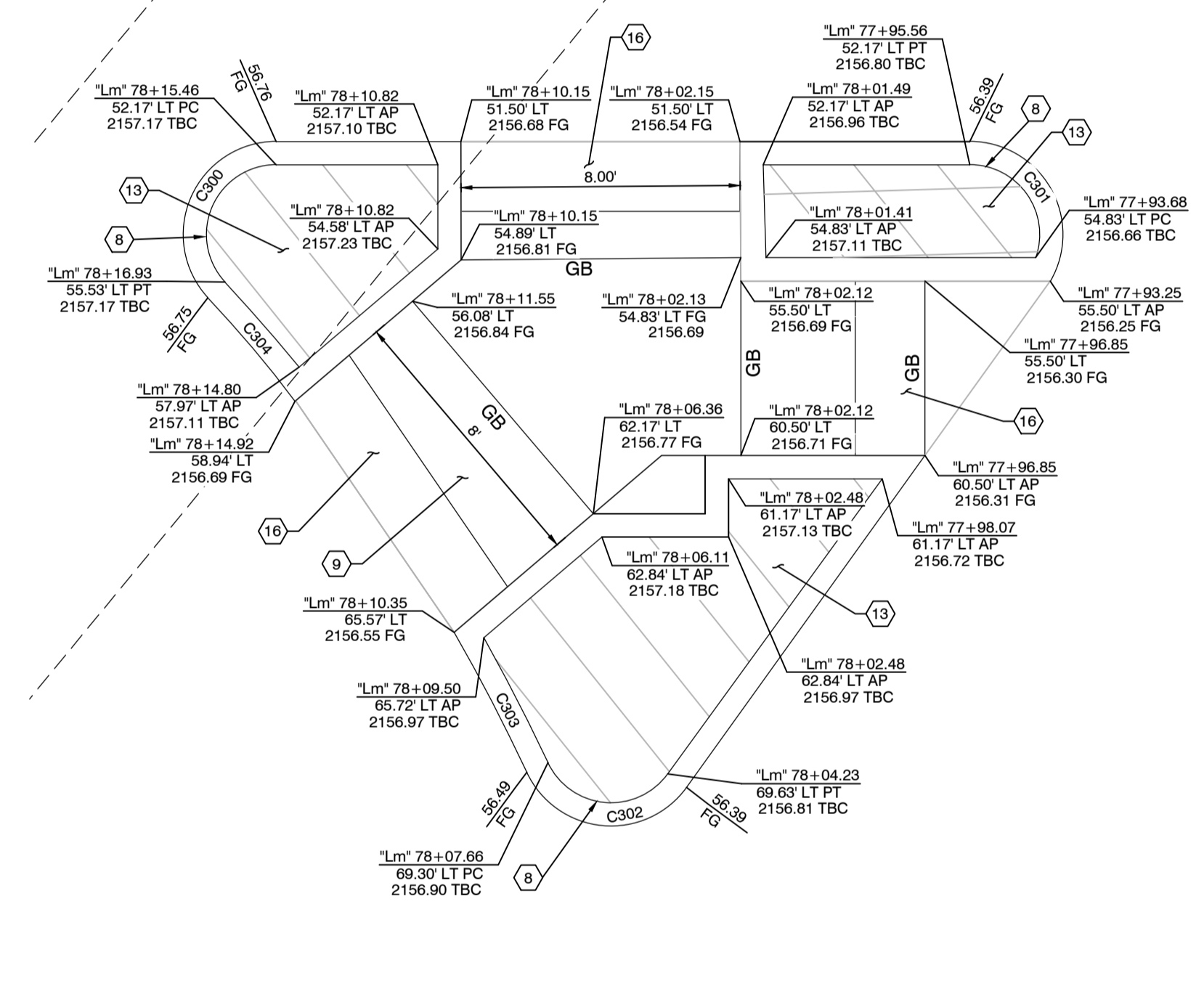
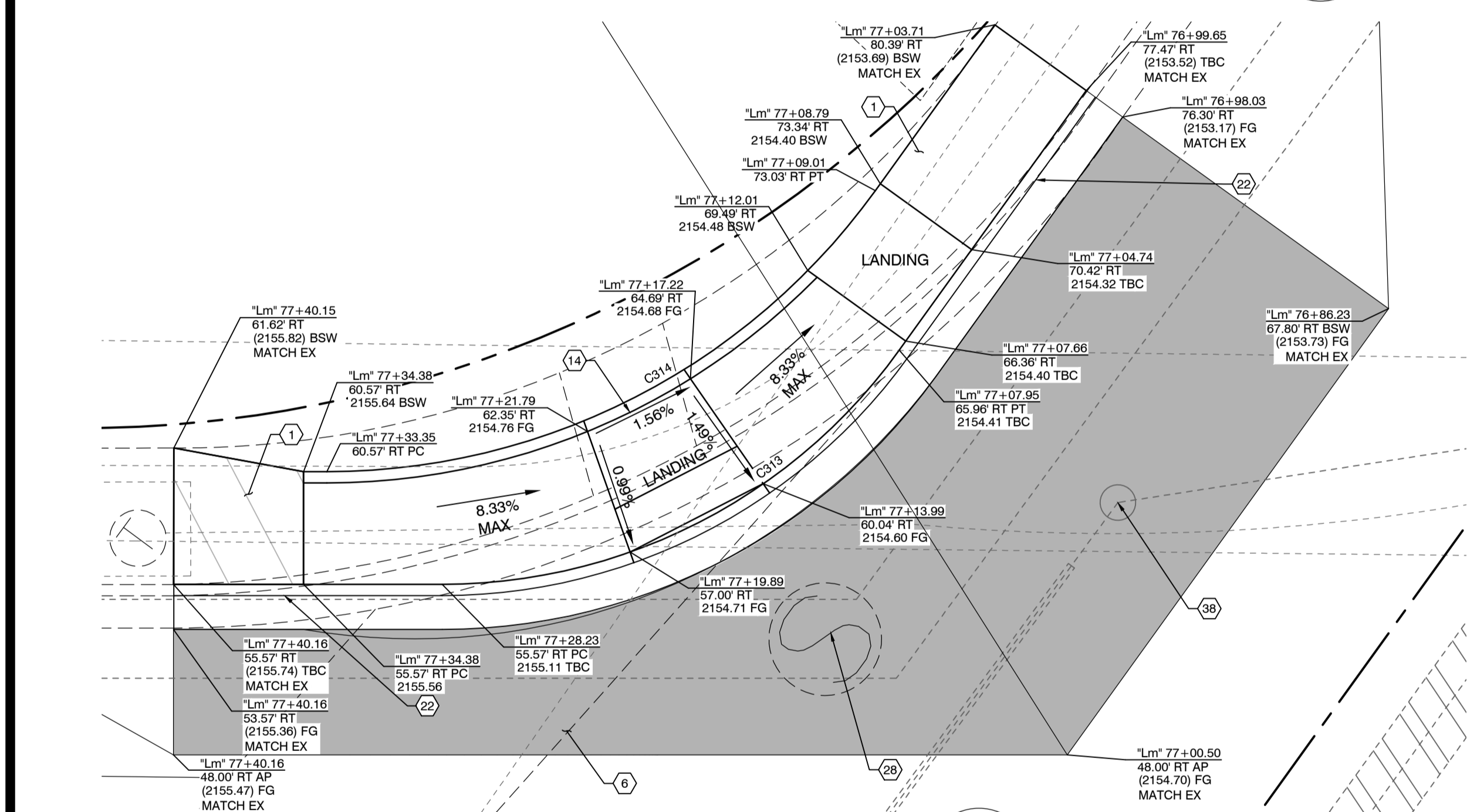
CALL BEFORE CONSTRUCTION		
BEFORE YOU DIG	USA NORTH	811 OR 800-227-2600
BEFORE YOU UNDERGROUND	CLARK COUNTY TRAFFIC OPERATIONS	702-455-7511
	CITY OF LAS VEGAS T.E.F.O.	702-229-6331
BEFORE YOU OVERHEAD	NV ENERGY	702-227-2929

CONSTRUCTION KEY NOTES

- 1 CONSTRUCT SIDEWALK PER USD 234
- 8 CONSTRUCT TYPE "A" CURB PER USD 219
- 9 CONSTRUCT 4" THICK CONCRETE PER USD 234
- 13 CONSTRUCT ISLAND PAVING PER USD 218
- 14 CONSTRUCT CASE I RAMP W/ TACTILE WARNING PER USD 235
- 15 CONSTRUCT MODIFIED TYPE R PEDESTRIAN RAIL DETAIL A SHEET RD-02A
- 16 INSTALL TACTILE WARNING STRIP
- 17 CONSTRUCT 42" ORNAMENTAL FENCE PER DETAIL D SHEET RD-02A
- 22 CONSTRUCT TYPE "L" CURB PER USD 216
- 28 ADJUST SANITARY SEWER MANHOLE TO FINISHED GRADE PER DCSWCS NO SD-4
- 38 ADJUST GAS VALVE TO GRADE

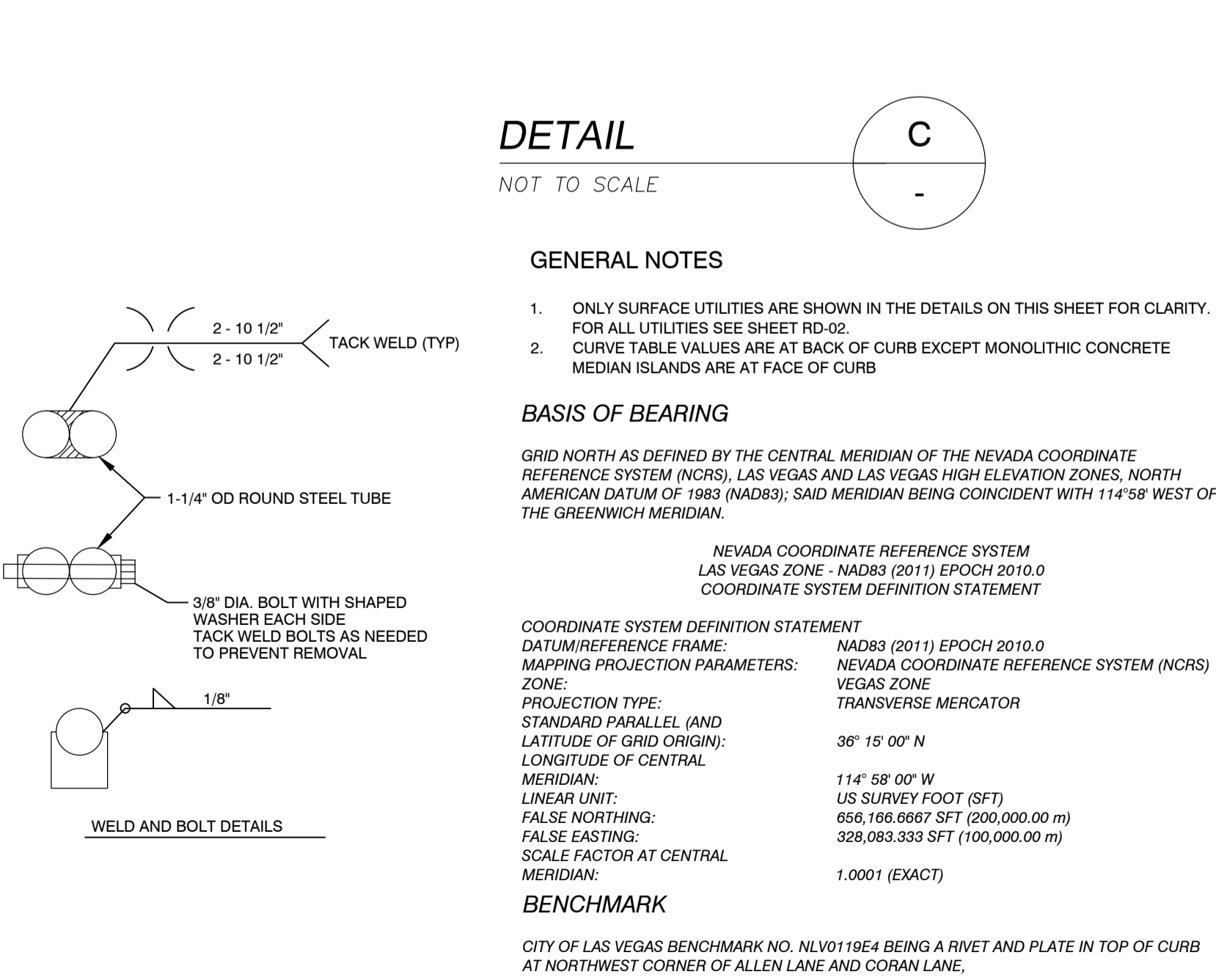
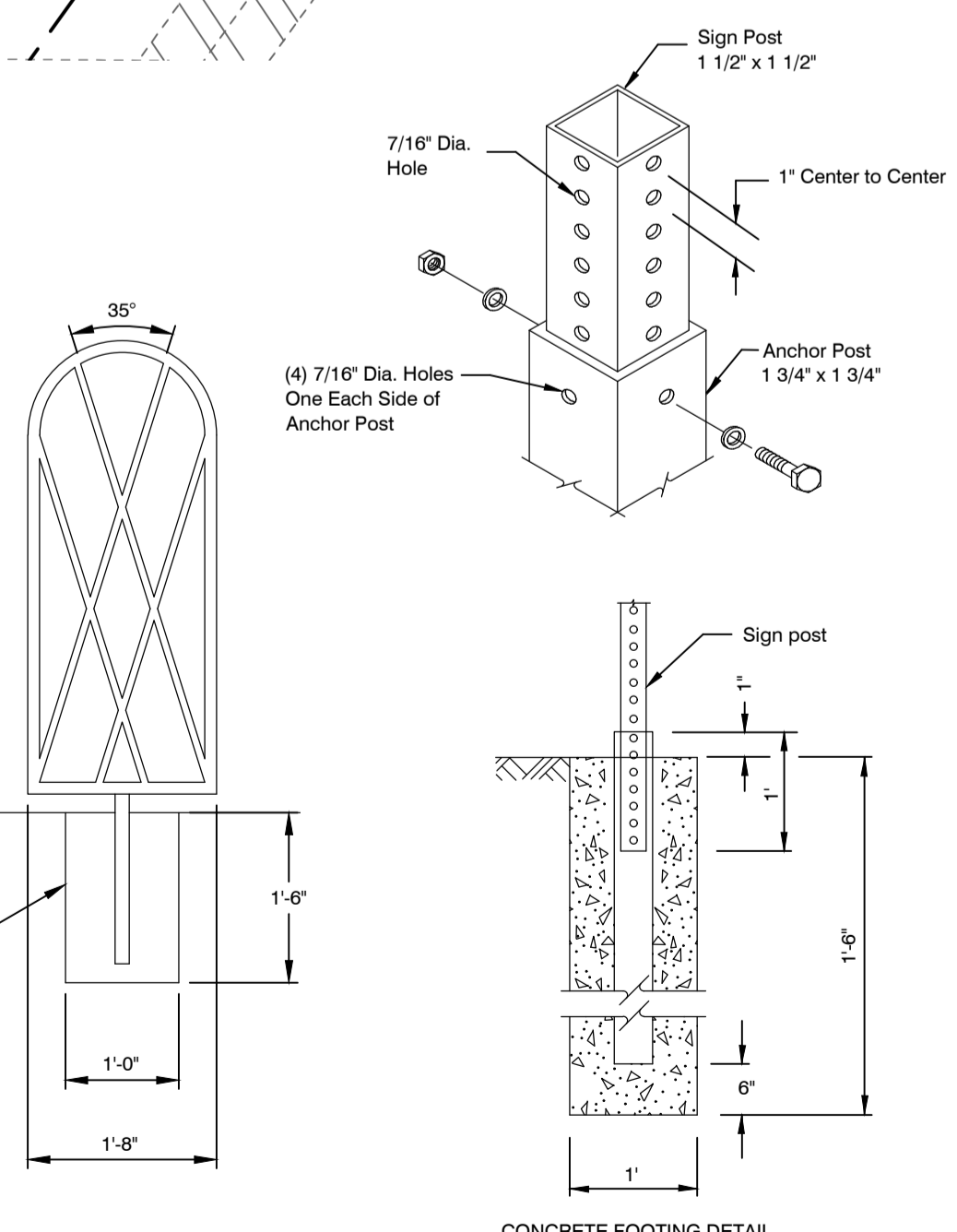
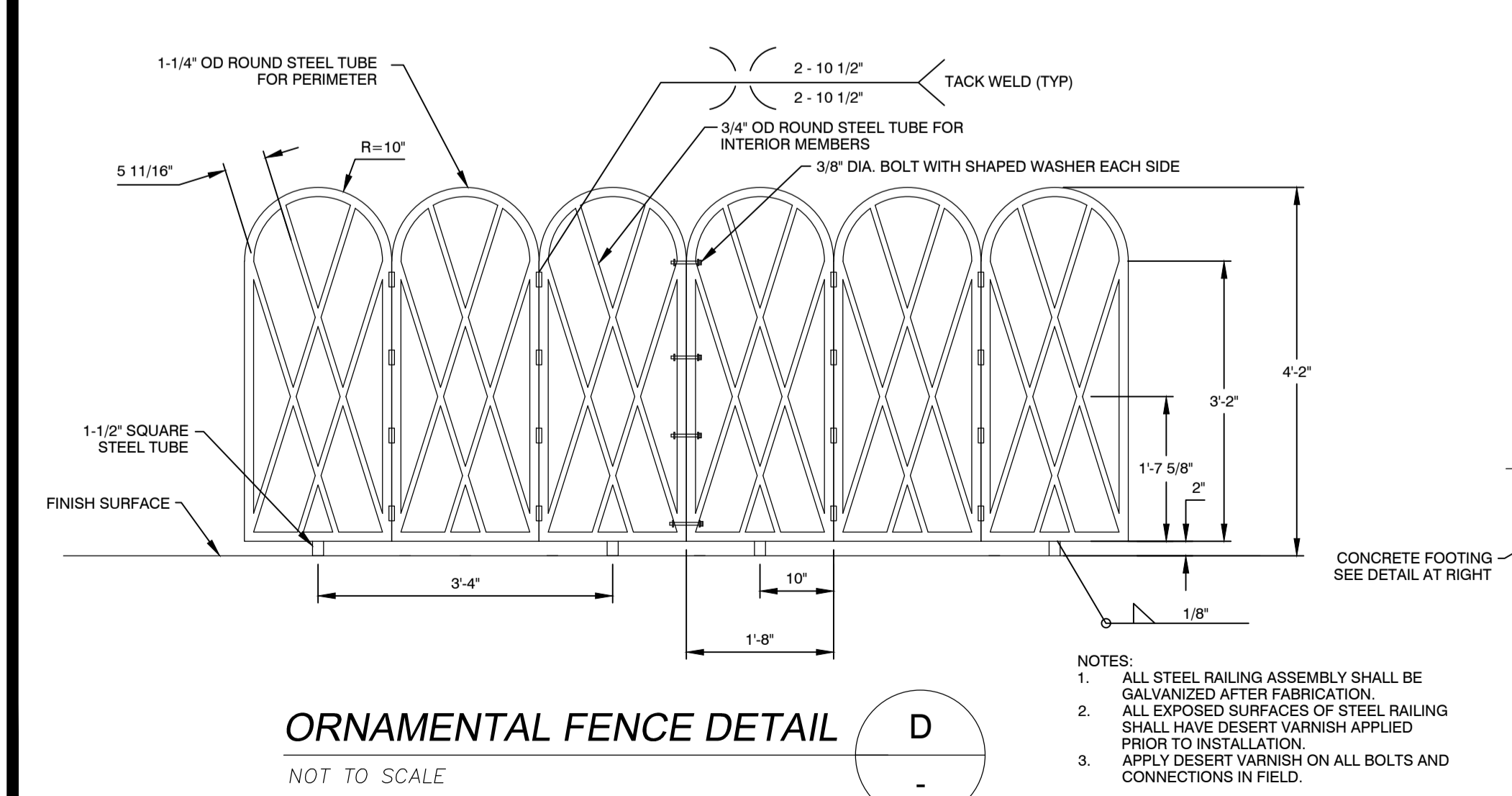
DETAIL A
NOT TO SCALE

Curve #	Length	Radius	Delta
C300	4.64'	2.00'	132°48'56"
C301	3.82'	2.00'	109°22'12"
C302	4.16'	2.00'	119°14'20"
C303	4.02'	53.98'	4°16'17"
C304	3.24'	53.67'	3°27'37"
C305	35.77'	224.61'	9°07'30"
C306	2.82'	1.00'	161°43'33"
C307	36.77'	224.52'	9°23'03"
C308	0.52'	0.33'	90°00'00"
C309	1.05'	0.33'	180°00'00"
C310	1.05'	0.33'	180°00'00"
C311	0.93'	1.33'	39°46'41"
C312	5.31'	9.33'	32°35'14"
C313	23.66'	25.00'	54°13'57"
C314	28.40'	30.00'	54°13'57"



DETAIL B
NOT TO SCALE

DETAIL C
NOT TO SCALE



GENERAL NOTES

- ONLY SURFACE UTILITIES ARE SHOWN IN THE DETAILS ON THIS SHEET FOR CLARITY. FOR ALL UTILITIES SEE SHEET RD-02.
- CURVE TABLE VALUES ARE AT BACK OF CURB EXCEPT MONOLITHIC CONCRETE MEDIAN ISLANDS ARE AT FACE OF CURB.

BASIS OF BEARING

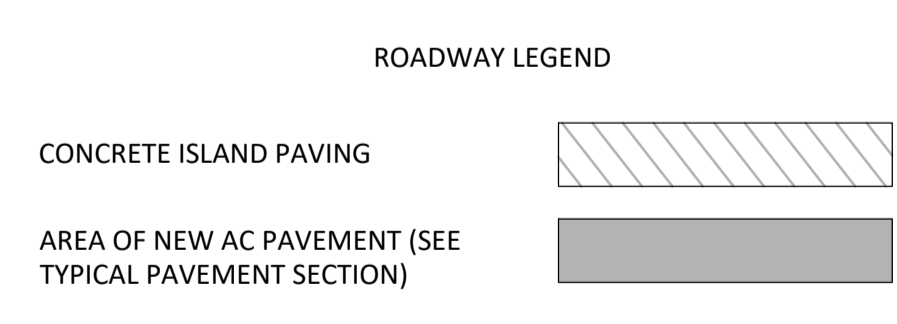
GRID NORTH AS DEFINED BY THE CENTRAL MERIDIAN OF THE NEVADA COORDINATE REFERENCE SYSTEM (NCRS), LAS VEGAS AND LAS VEGAS HIGH ELEVATION ZONES, NORTH AMERICAN DATUM OF 1983 (NAD83); SAID MERIDIAN BEING COINCIDENT WITH 114°58' WEST OF THE GREENWICH MERIDIAN.

NEVADA COORDINATE REFERENCE SYSTEM
LAS VEGAS ZONE - NAD83 (2011) EPOCH 2010.0
COORDINATE SYSTEM DEFINITION STATEMENT

COORDINATE SYSTEM DEFINITION STATEMENT
DATUM/REFERENCE FRAME: NAD83 (2011) EPOCH 2010.0
MAPPING PROJECTION PARAMETERS: NEVADA COORDINATE REFERENCE SYSTEM (NCRS) VEGAS ZONE
PROJECTION TYPE: TRANSVERSE MERCATOR
STANDARD PARALLEL (AND LATITUDE OF GRID ORIGIN): 36° 15' 00" N
MERIDIAN: 114° 58' 00" W
LINEAR UNIT: US SURVEY FOOT (SFT)
FALSE NORTHING: 658,106.6607 SFT (200,000.00 m)
FALSE EASTING: 328,083.333 SFT (100,000.00 m)
SCALE FACTOR AT CENTRAL MERIDIAN: 1.0001 (EXACT)

BENCHMARK

CITY OF LAS VEGAS BENCHMARK NO. NLV0119E4 BEING A RIVET AND PLATE IN TOP OF CURB AT NORTHWEST CORNER OF ALLEN LANE AND CORAN LANE,
ELEVATION: 2128.14 FEET OR 648.658 METERS, NAVD88



PREPARED BY: **Jacobs**
 1301 N. GREEN VALLEY PKWY., SUITE 200
 HENDERSON, NV 89074
 (702) 938-5400

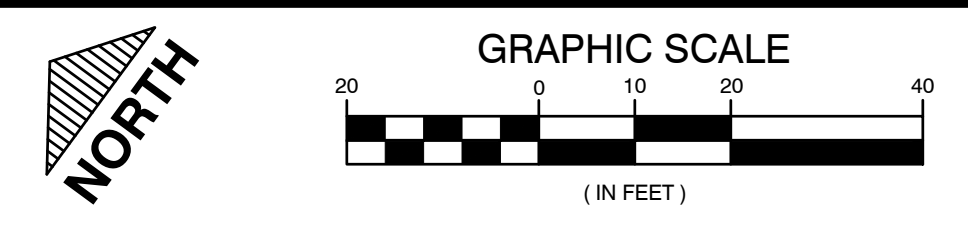
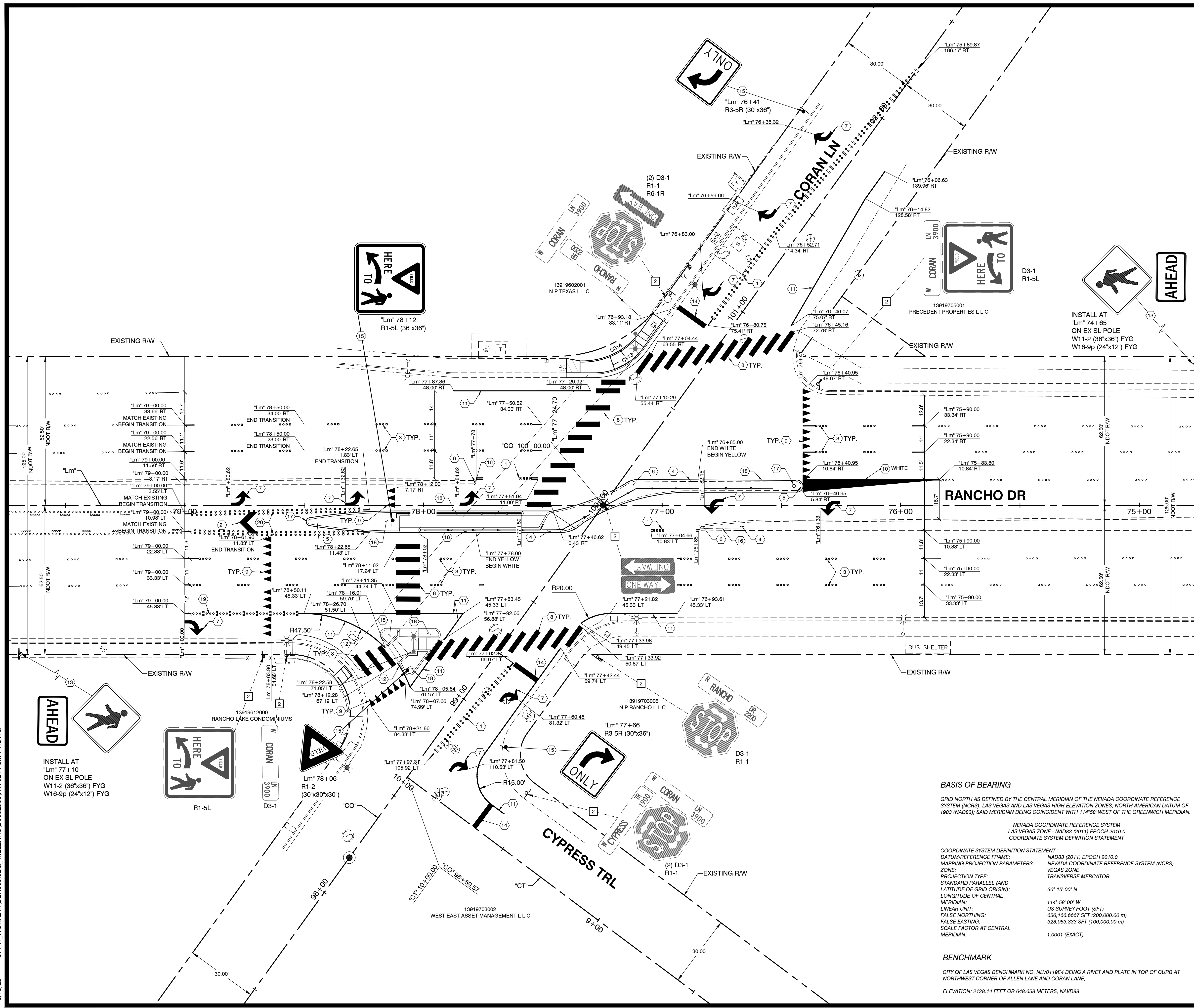
PREPARED FOR: **CITY OF LAS VEGAS**
 H# 68236
 BID# 2288236
 DESIGNED BY: ZVR
 DRAWN BY: MA
 CHECKED BY: BCT

CITY WIDE PEDESTRIAN SAFETY IMPROVEMENTS PHASE 1
ROADWAY DETAILS
RANCHO DR & CORAN LN

DATE: 27 JUNE 2022
 SUBMITTAL STAGE: FINAL
 SHEET: RD-02A
 15 OF 28
 DRAWING NO: 107V-7138
 17 AUG 2022

TITLE SHEET
 REVISIONS
 NO. DATE

6/15/23 C:\PW\WORKDIR\EN003\JEG_MILLER\HC\09690\H170214-SM-P1.DWG



CALL BEFORE CONSTRUCTION		
BEFORE YOU DIG	USA NORTH	811 OR 800-227-2500
BEFORE YOU UNDERGROUND	CLARK COUNTY TRAFFIC OPERATIONS	702-455-7511
	CITY OF LAS VEGAS T.E.F.O.	702-229-6331
BEFORE YOU OVERHEAD	NV ENERGY	702-227-2929

CONSTRUCTION KEY NOTES

- 1 INSTALL TYPE I CENTERLINE (RPM) PER USD 244
 - 3 INSTALL TYPE 4 LANE LINE (RPM) PER USD 244.1
 - 4 ENTIRE MEDIAN ISLAND SHALL BE PAINTED YELLOW PER USD 248
 - 5 MEDIAN NOSE MARKING (WHITE) PER USD 248
 - 6 MEDIAN NOSE MARKING (YELLOW) PER USD 248
 - 7 INSTALL TYPE II PMF (ARROW) PER USD 246
 - 8 INSTALL TYPE II PMF CROSSWALK BAR PER USD 254
 - 9 INSTALL TYPE II PMF YIELD BAR PER NDOT STD. ST-7
 - 10 INSTALL TYPE II PMF GORE COLOR PER PLAN AND USD 245
 - 11 INSTALL TYPE II PMF 6" SOLID WHITE STRIPE
 - 12 INSTALL TYPE II PMF 6" SOLID YELLOW STRIPE
 - 13 INSTALL POLE MOUNTED SIGN(S) PER PLAN
 - 14 INSTALL TYPE II PMF 24 INCH WHITE STOP BAR PER USD 248
 - 15 INSTALL POST MOUNTED SIGN (S) PER PLAN
 - 16 INSTALL K-71 RE-ERECTING MARKING POST, YELLOW
 - 17 INSTALL K-71 RE-ERECTING MARKING POST, WHITE
 - 18 ENTIRE MEDIAN ISLAND SHALL BE PAINTED WHITE PER USD 248
 - 19 INSTALL 8" STORAGE LANE LINE (RPM) PER USD 246
 - 20 INSTALL LANE TRANSITION (RPM) PER USD 245
 - 21 INSTALL TYPE II PMF 24" WIDE CHEVRON MARKINGS PER USD 245
- 2 EXISTING SIGN TO REMAIN

FOR ROADWAY PLAN
SEE SHEET RD-02

FOR REMOVAL/DEMOLITION
PLAN SEE SHEET DM-02

FOR TRAFFIC SIGNAL PLAN
SEE SHEET TS-02

BASIS OF BEARING
GRID NORTH AS DEFINED BY THE CENTRAL MERIDIAN OF THE NEVADA COORDINATE REFERENCE SYSTEM (NCRS), LAS VEGAS AND LAS VEGAS HIGH ELEVATION ZONES, NORTH AMERICAN DATUM OF 1983 (NAD83); SAID MERIDIAN BEING COINCIDENT WITH 114°58' WEST OF THE GREENWICH MERIDIAN.

NEVADA COORDINATE REFERENCE SYSTEM
LAS VEGAS ZONE - NAD83 (2011) EPOCH 2010.0
COORDINATE SYSTEM DEFINITION STATEMENT

COORDINATE SYSTEM DEFINITION STATEMENT
DATUM/REFERENCE FRAME: NAD83 (2011) EPOCH 2010.0
MAPPING PROJECTION PARAMETERS: NEVADA COORDINATE REFERENCE SYSTEM (NCRS)
ZONE: VEGAS ZONE
PROJECTION TYPE: TRANSVERSE MERCATOR
STANDARD PARALLEL (AND LATITUDE OF GRID ORIGIN): 36° 15' 00" N
LONGITUDE OF CENTRAL MERIDIAN: 114° 58' 00" W
LINEAR UNIT: US SURVEY FOOT (SFT)
FALSE NORTHING: 656,186.6667 SFT (200,000.00 m)
FALSE EASTING: 328,083.333 SFT (100,000.00 m)
SCALE FACTOR AT CENTRAL MERIDIAN: 1.0001 (EXACT)

BENCHMARK
CITY OF LAS VEGAS BENCHMARK NO. NLV0119E4 BEING A RIVET AND PLATE IN TOP OF CURB AT NORTHWEST CORNER OF ALLEN LANE AND CORAN LANE.
ELEVATION: 2128.14 FEET OR 648.658 METERS, NAVD88

PREPARED BY: **Jacobs**
1301 N. GREEN VALLEY PKWY, SUITE 200
HENDERSON, NV 89074
(702) 998-5400

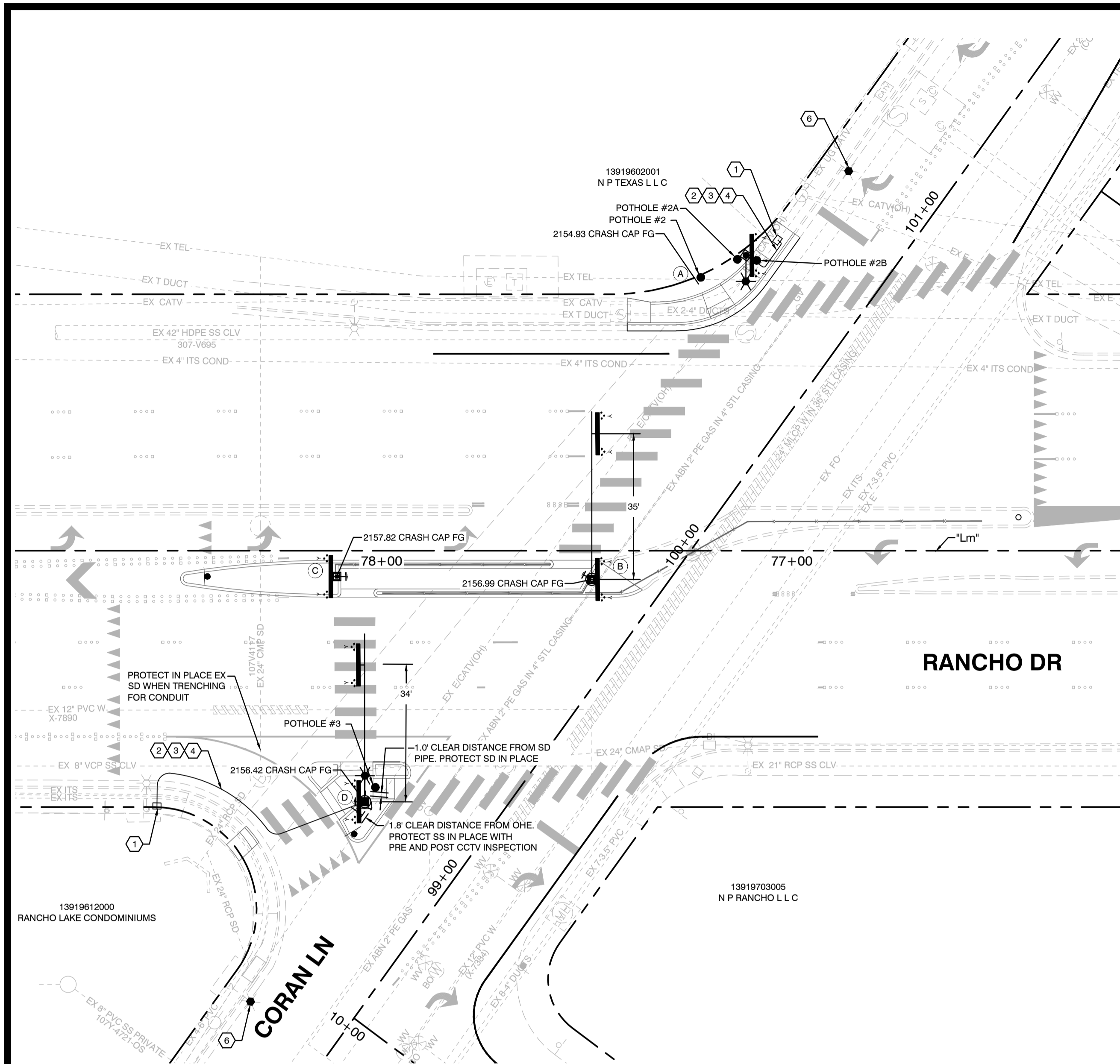
PREPARED FOR: **CITY OF LAS VEGAS**
H# 662626
DESIGNED BY: ZVR
DATE: 27 JUNE 2022
DRAWN BY: MA
SUBMITTAL STAGE: FINAL
CHECKED BY: BCT

TITLE: **CITY WIDE PEDESTRIAN SAFETY IMPROVEMENTS PHASE 1**
SHEET: **SIGN AND MARKING PLAN RANCHO & CORAN**

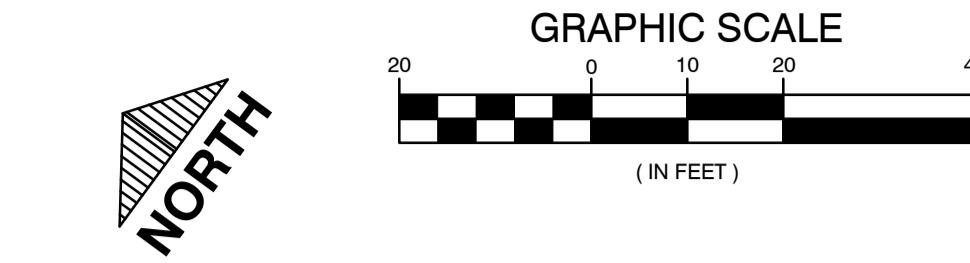
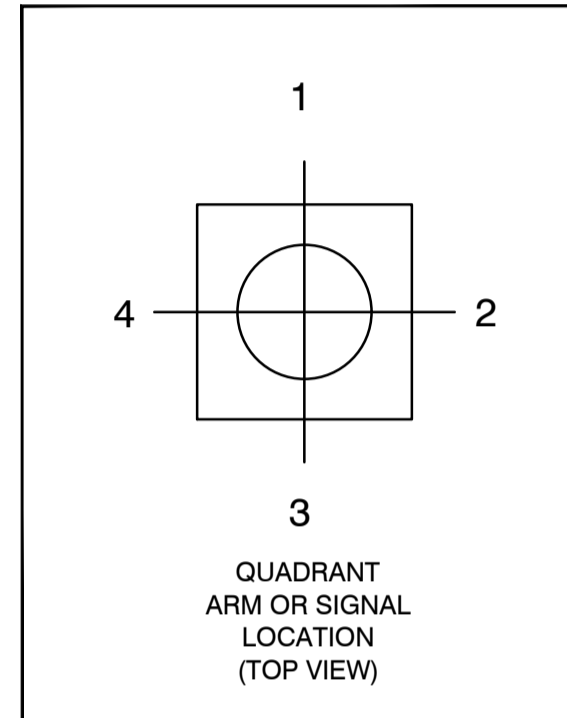
NO. DATE REVISIONS

SHEET: **SM-02**
17 OF 28
DRAWING NO. **107V-7138**

17 AUG 2022



QUADRANT DETAIL



LEGEND

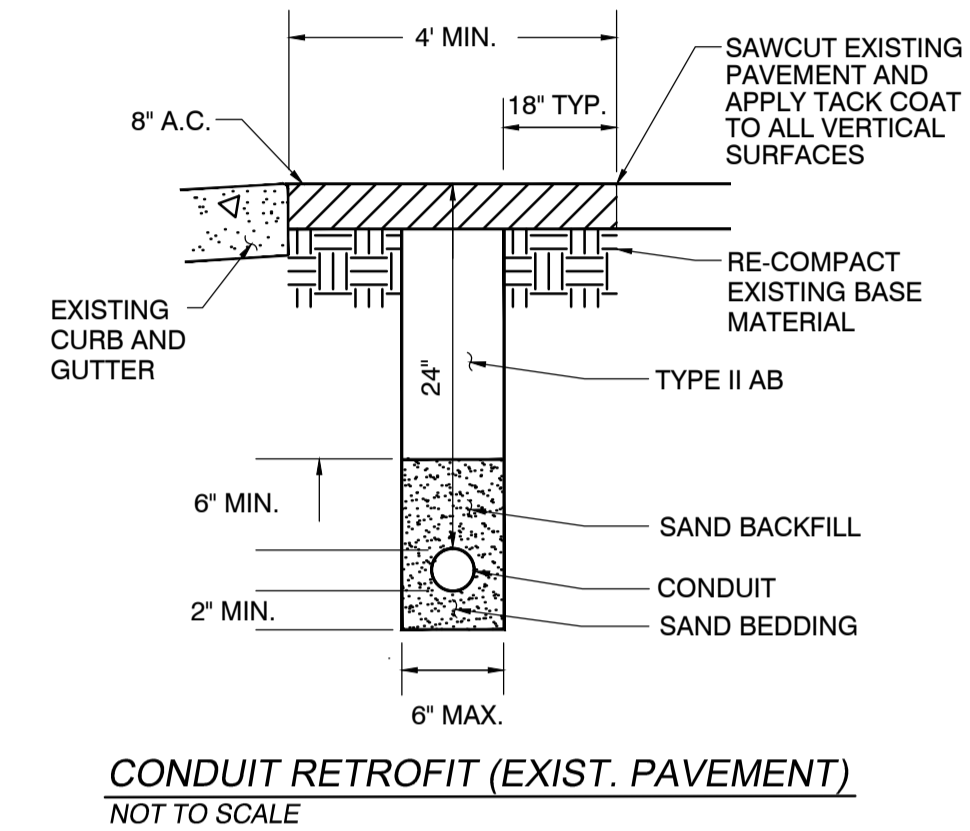
- CENTERLINE
- - - RIGHT OF WAY LINE
- SL — STREET LIGHT CONDUIT
- TS — TRAFFIC SIGNAL CONDUIT
- FO — FIBER OPTIC CONDUIT
- ☐ ELECTRIC VAULT/PULL BOX
- ⚡ FLASHER
- ☐ STREET LIGHT PULL BOX
- ☐ TRAFFIC SIGNAL PULL BOX
- ⊙ EXISTING STREET LIGHT POLE
- ➔ PEDESTRIAN INDICATION AND DIRECTION
- ⊙ STREET LIGHT POLE WITH LUMINAIRE
- ⊙ NEW LED LUMINAIRE ON EXISTING STREET LIGHT POLE

CONDUIT NOTE

CONDUIT LAYOUT IS DIAGRAMMATIC ONLY. INSTALL CONDUIT TO AVOID EXISTING UTILITIES AND WITHIN THE RIGHT-OF-WAY AND IN A SINGLE TRENCH WHERE POSSIBLE. CONTRACTOR TO VERIFY EXISTING CONDUIT RUNS.

STREET LIGHT NOTES

- 1 INSTALL NO. 3-1/2 PULLBOX PER USD AND INTERCEPT EXISTING STREETLIGHT CONDUIT
- 2 INSTALL 3 INCH PVC CONDUIT
- 3 INSTALL 2 - #4 THW CONDUCTORS
- 4 INSTALL 1 - #8 THW CONDUCTOR
- 5 INSTALL LED 130W LED T3 LUMINAIRE

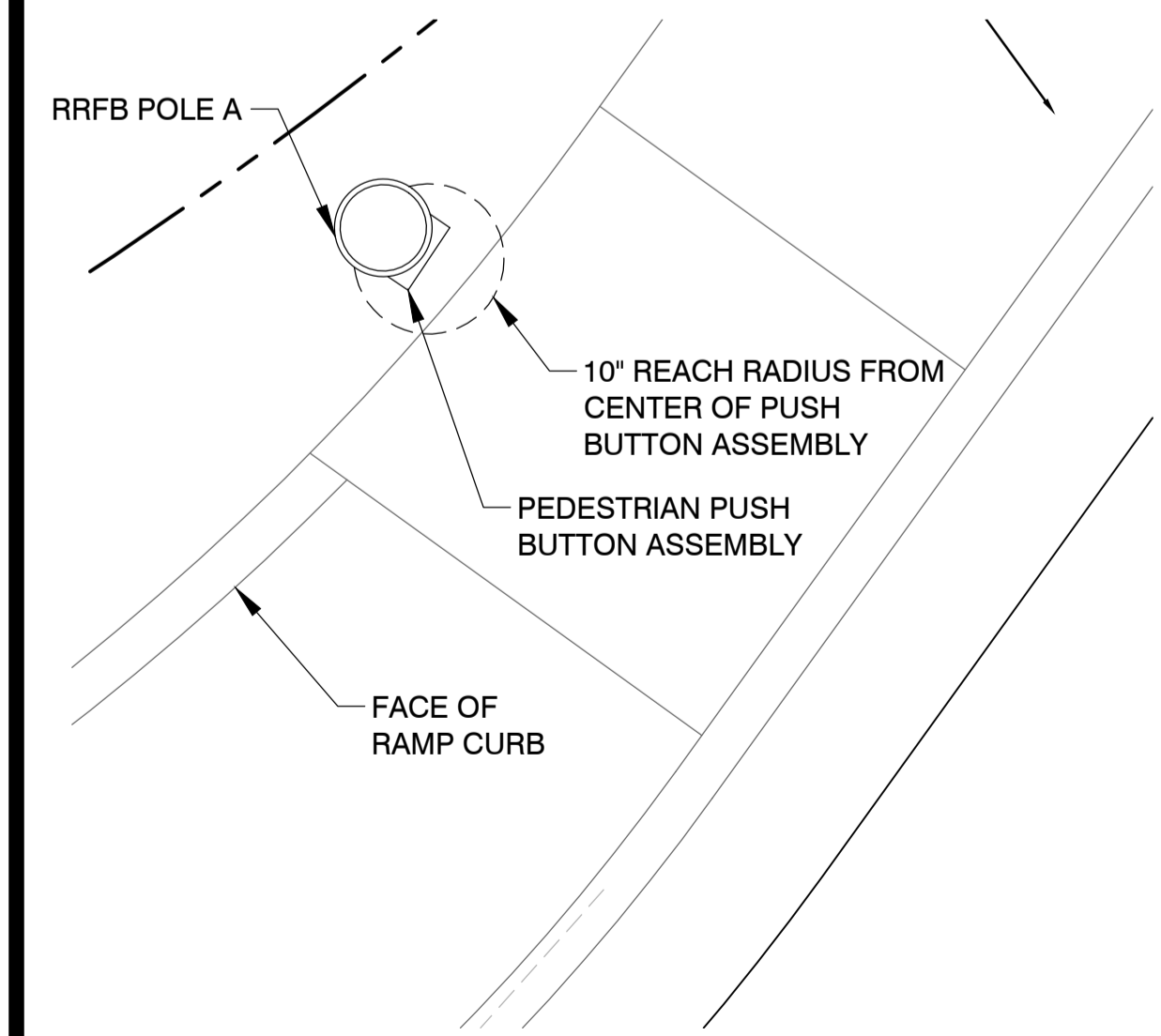


CONDUIT RETROFIT (EXIST. PAVEMENT)
NOT TO SCALE

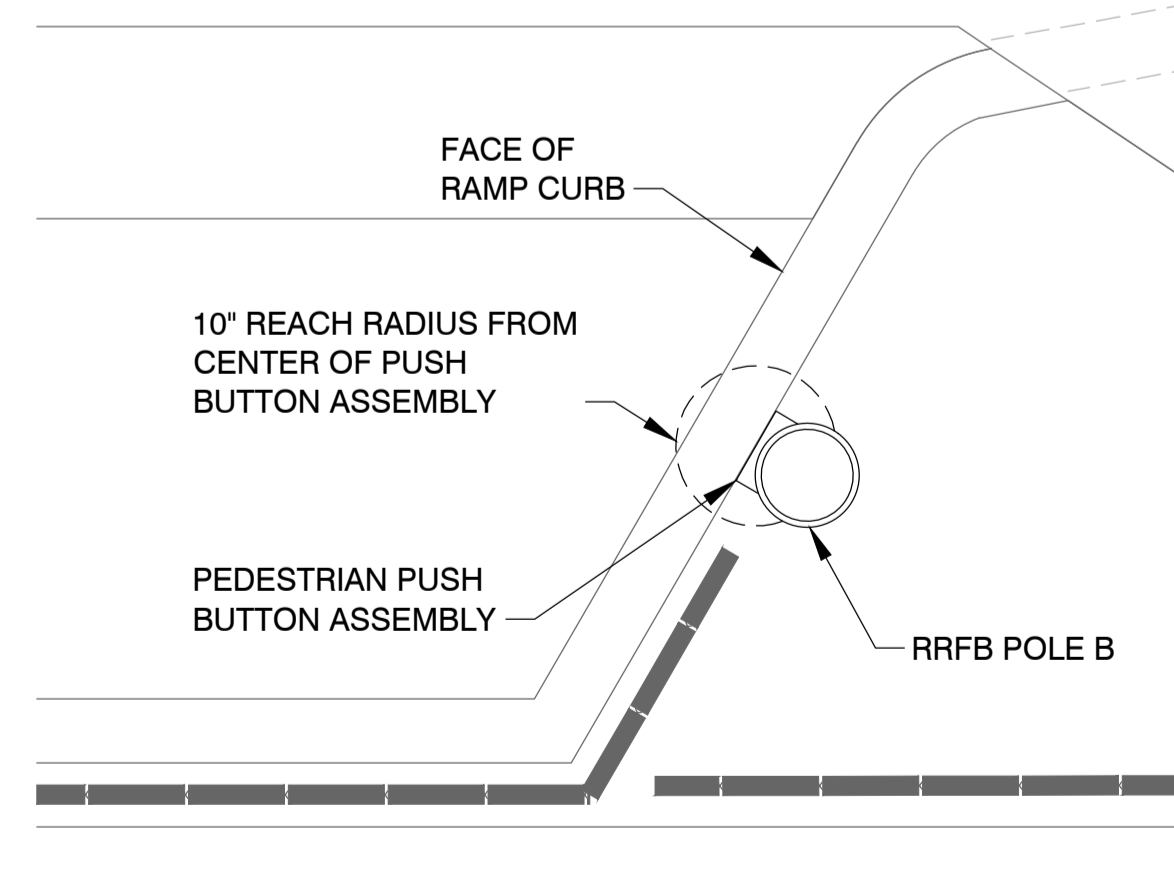
SIGNAL POLE SCHEDULE

POLE	LOCATION STATION	TYPE	SIGNAL ARM		LUM. ARM		SIGNALS VEHICULAR		PED. BUTTON		SIGNAL SIGN		REMARKS
			QUAD.	LNG.	QUAD.	LNG.	MOUNT (QUANTITY)	QUAD.	QUAD.	ARROW	MOUNT	QUAD	
A	"Lm" 77+22.93 65.28' RT	USD 316	-	-	3	15'	RRFB	2	2	LT	W11-2 W16-7PL	2 2	INSTALL 11 GA STREETLIGHT POLE ON NEW FOUNDATION WITH RRFB SYSTEM AND 130W LED LUMINAIRE PER USD 316, 321 AND DETAIL C SHEET TS-02A. PROVIDE 10-INCH MAXIMUM PUSH BUTTON REACH DISTANCE.
B	"Lm" 77+48.81 7.00' LT	XX-20	1	35'	-	-	RRFB RRFB	M.A. 2	4	LT	W11-2 W16-7PR	M.A. 2 2	INSTALL TYPE XX-20 POLE ON H FOUNDATION WITH RRFB SYSTEM PER USD 812, 721, AND DETAIL B SHEET TS-02A. PROVIDE 10-INCH MAXIMUM PUSH BUTTON REACH DISTANCE.
C	"Lm" 78+10.98 6.29' LT	MOD. 1-A	-	-	-	-	RRFB	4	2	LT	W11-2 W16-7PR	4 4	INSTALL 15 FT MODIFIED TYPE 1-A POLE ON MODIFIED 'C' FOUNDATION WITH RRFB SYSTEM PER DETAIL A SHEET TS-02A. PROVIDE 10-INCH MAXIMUM PUSH BUTTON REACH DISTANCE.
D	"Lm" 78+04.15 61.17' LT	XX-30	1	40'	1	15'	RRFB RRFB	4 M.A.	4	LT	W11-2 W16-7PL	M.A. 4 4	INSTALL TYPE XX-30 POLE ON H FOUNDATION WITH RRFB SYSTEM AND 130W LUMINAIRE PER USD 808, 721, AND DETAIL B SHEET TS-02A. PROVIDE 10-INCH MAXIMUM PUSH BUTTON REACH DISTANCE.

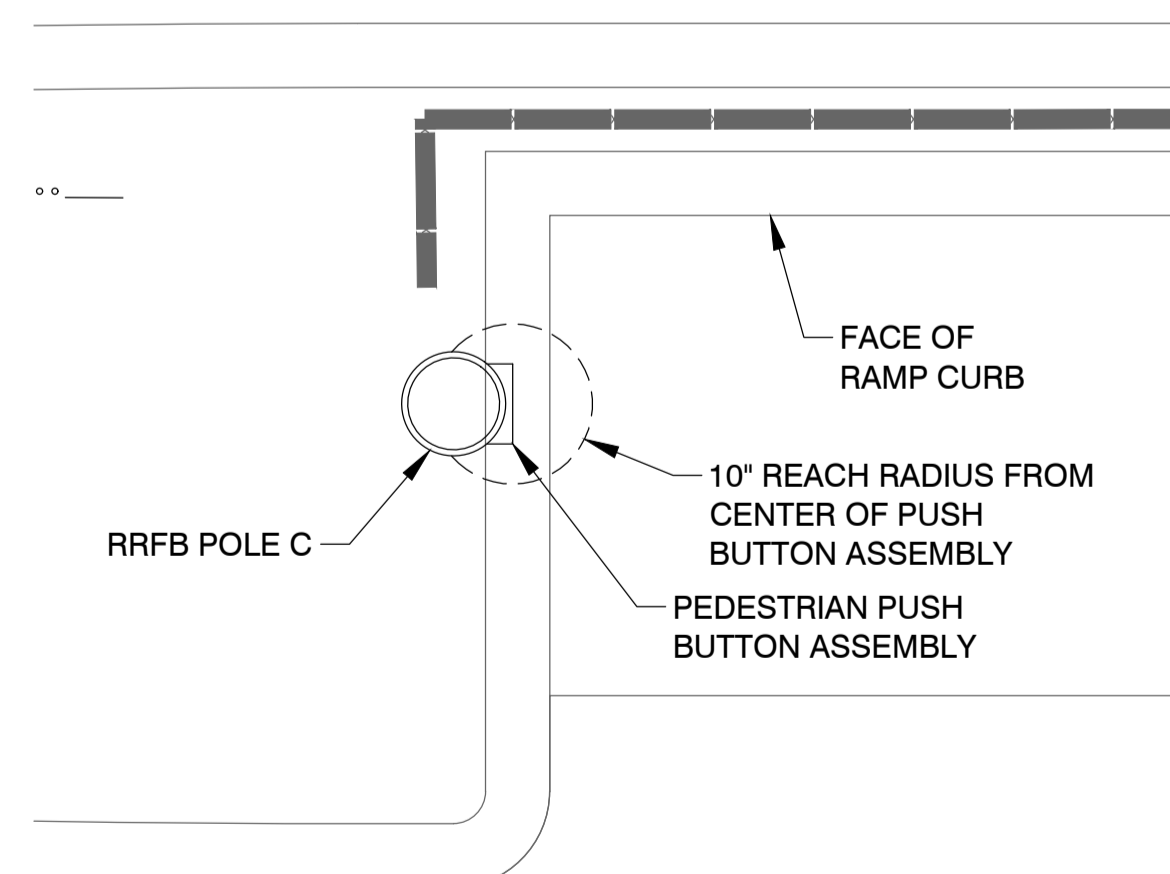
- POLE NOTES:
1. SEE SHEET GN3 FOR TRAFFIC SIGNAL NOTES.
 2. DUAL PHASE SYSTEM.
 3. THIS SIGNAL SHALL OPERATE AS TWO SEPARATE CROSSINGS FOR EAST BOUND AND WEST BOUND MOVEMENTS.
 4. MODIFIED TYPE C POLE FOUNDATIONS SHALL HAVE 1-2' CONDUIT STUB FROM FOUNDATION. ALL H, L, OR M POLE FOUNDATIONS SHALL HAVE 1-3' CONDUIT STUB FROM FOUNDATION. THE CONDUIT SHALL BE POINTED UP AND CAPPED WITH CONDUIT FITTING ON THE END AND WRAPPED WITH 10 MIL. NO TRACER WIRE IS REQUIRED.



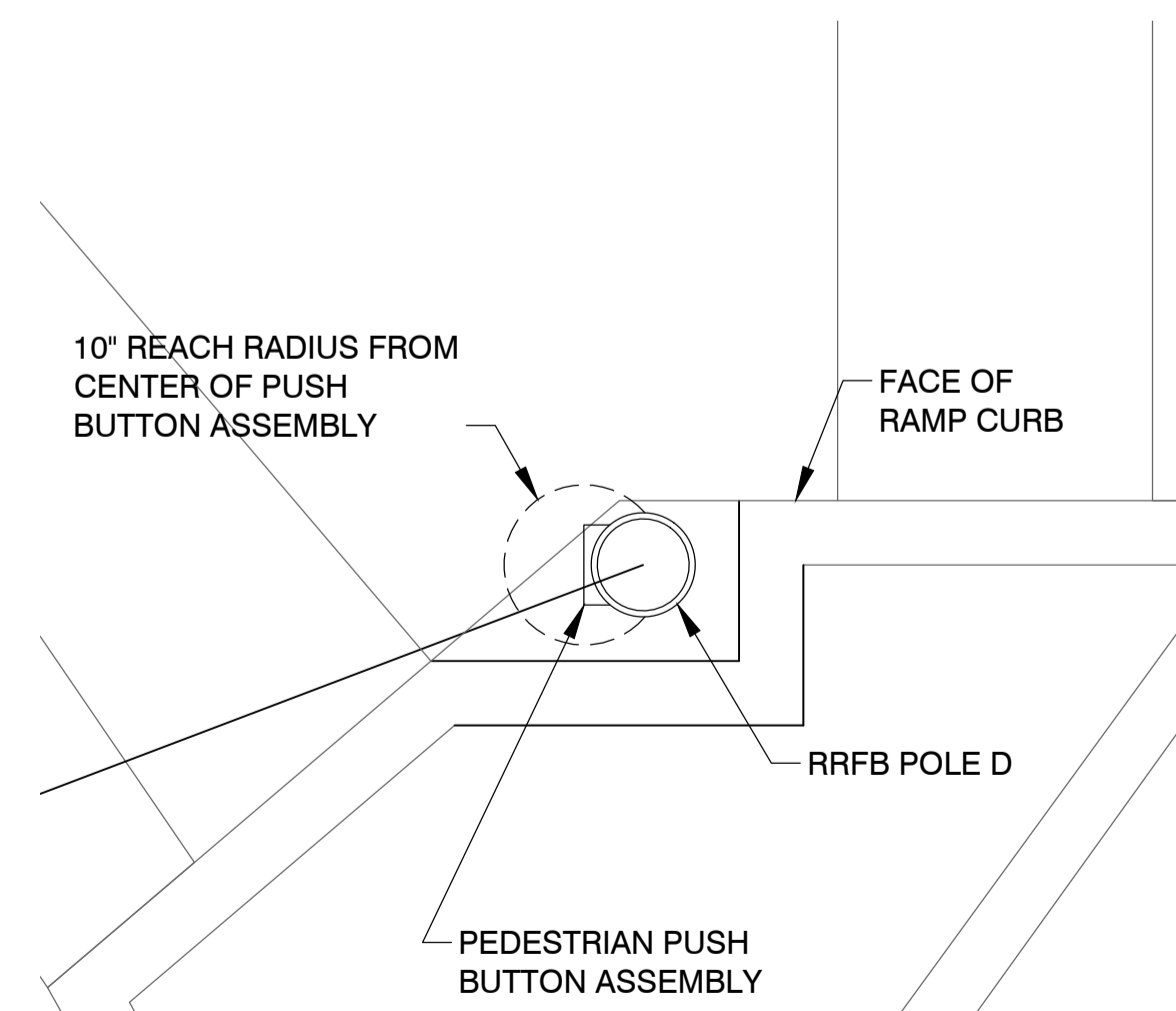
POLE A PED BUTTON DETAIL



POLE B PED BUTTON DETAIL



POLE C PED BUTTON DETAIL



POLE D PED BUTTON DETAIL

FOR REMOVAL/DEMOLITION
PLAN SEE SHEET DM-02

FOR ROADWAY PLAN
SEE SHEET RD-02

FOR SIGNING AND MARKING
PLAN SEE SHEET SM-02

CALL BEFORE CONSTRUCTION

BEFORE YOU DIG	USA NORTH	811 OR 900-227-2600
BEFORE YOU UNDERGROUND	CLARK COUNTY TRAFFIC OPERATIONS	702-455-7511
	CITY OF LAS VEGAS T.E.F.O.	702-229-6331
BEFORE YOU OVERHEAD	NV ENERGY	702-227-2929

PREPARED BY: **Jacobs**

1301 N. GREEN VALLEY PKWY., SUITE 200
HENDERSON, NV 89074
(702) 938-5400

PREPARED FOR: **CITY OF LAS VEGAS**

BID# 22-08236
DESIGNED BY: ZVR
DRAWN BY: MA
CHECKED BY: BCT

DATE: 27 JUNE 2022
SUBMITTAL STAGE: FINAL

CITY WIDE PEDESTRIAN SAFETY IMPROVEMENTS PHASE 1

TRAFFIC SIGNAL PLAN RANCHO & CORAN

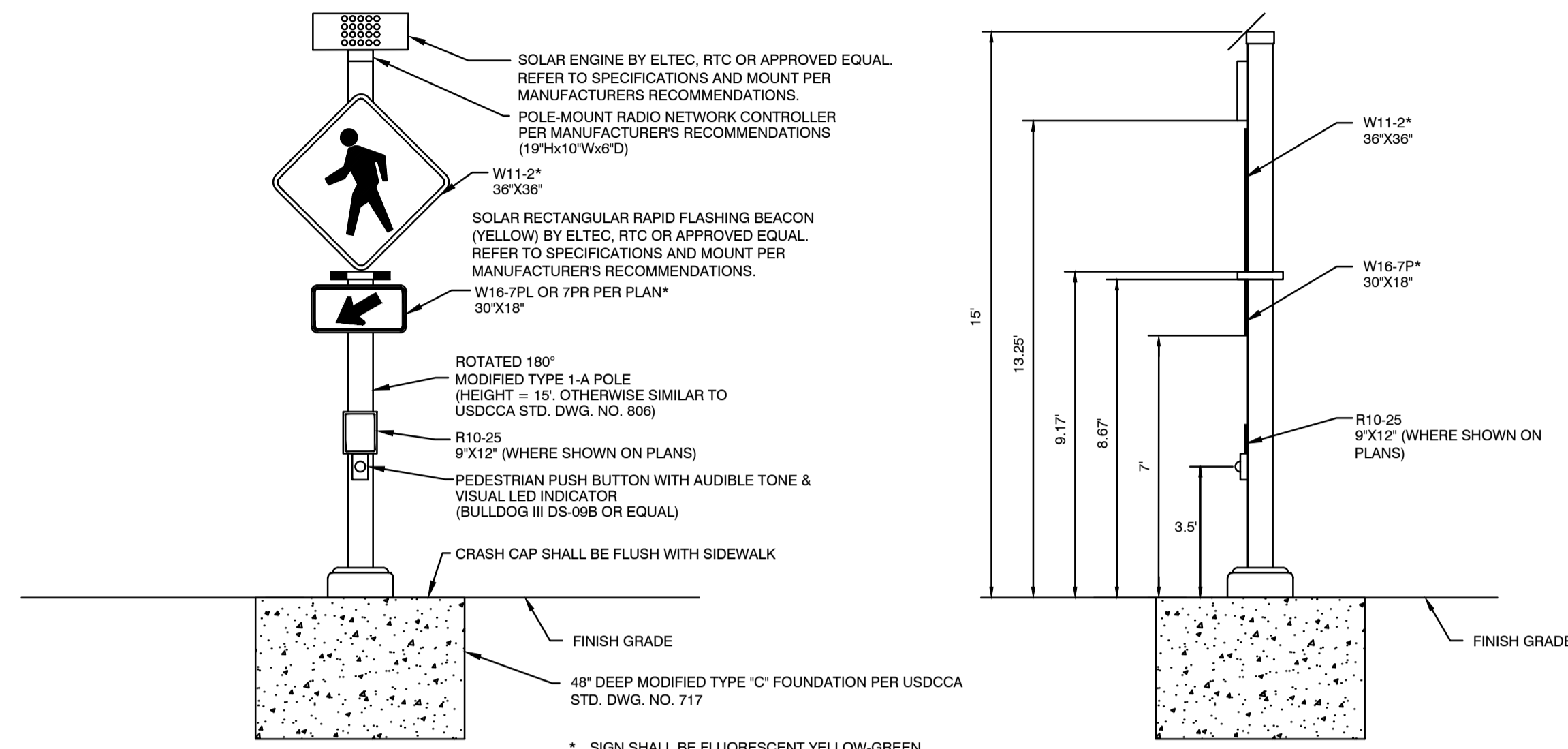
NO. DATE REVISIONS

NO. DATE REVISIONS

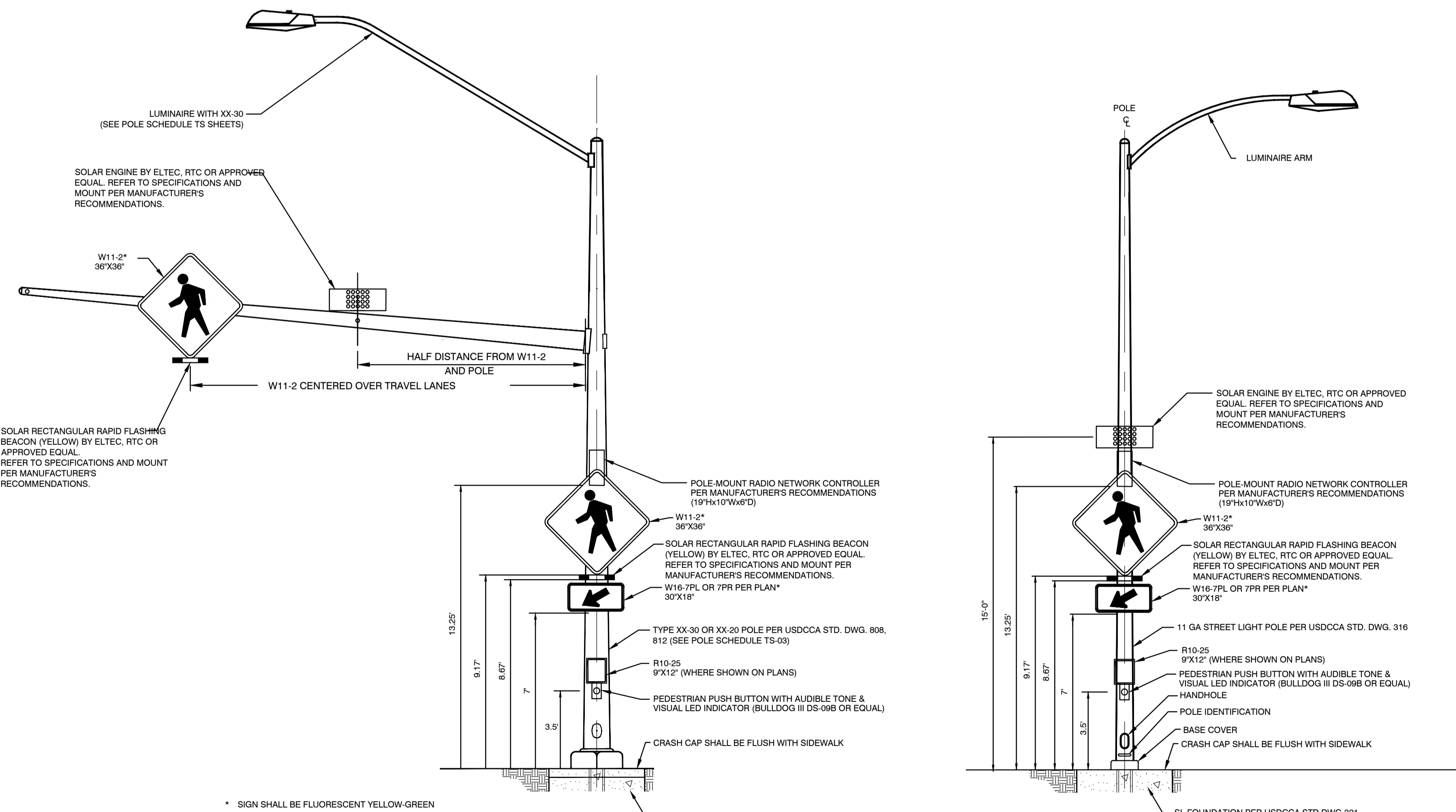
DATE: 27 JUNE 2022

PROJECT ENGINEER: TAYLOR
Exp: 05/30/24
CIVIL
NO. 19676
27 JUNE 2022

SHEET **TS-02**
18 OF 28
DRAWING NO. 107V-7138

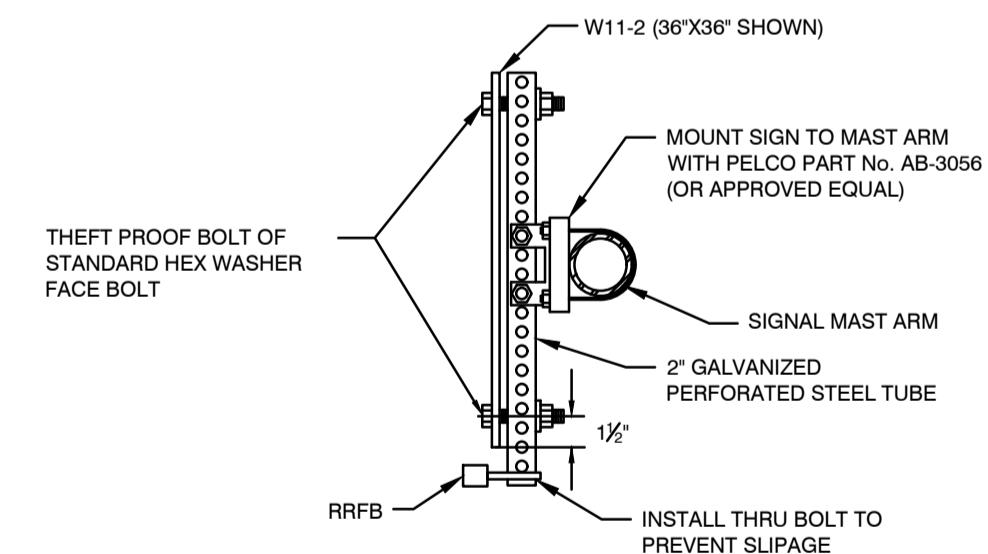


* SIGN SHALL BE FLUORESCENT YELLOW-GREEN
DETAIL A
 NOT TO SCALE



* SIGN SHALL BE FLUORESCENT YELLOW-GREEN
DETAIL B
 NOT TO SCALE

* SIGN SHALL BE FLUORESCENT YELLOW-GREEN
DETAIL C
 NOT TO SCALE



MAST ARM METHOD OF ATTACHMENT

CALL BEFORE CONSTRUCTION		
BEFORE YOU DIG	USA NORTH	811 OR 800-227-2600
BEFORE YOU UNDERGROUND	CLARK COUNTY TRAFFIC OPERATIONS	702-455-7511
	CITY OF LAS VEGAS T.E.F.O.	702-229-6331
BEFORE YOU OVERHEAD	NV ENERGY	702-227-2929

PREPARED BY Jacobs 1301 N. GREEN VALLEY PKWY. SUITE 200 HENDERSON, NV 89074 (702) 938-5400	
PREPARED FOR CITY OF LAS VEGAS	BID# 22-88236 DATE: 27 JUNE 2022 SUBMITTAL STAGE: FINAL
H# 68236 DESIGNED BY: ZVR DRAWN BY: MA CHECKED BY: BCT	NO. DATE REVISIONS
CITY WIDE PEDESTRIAN SAFETY IMPROVEMENTS PHASE 1 TRAFFIC SIGNAL DETAILS RANCHO & CORAN	
TITLE SHEET TS-02A 19 OF 28 DRAWING NO. 107V-7138	