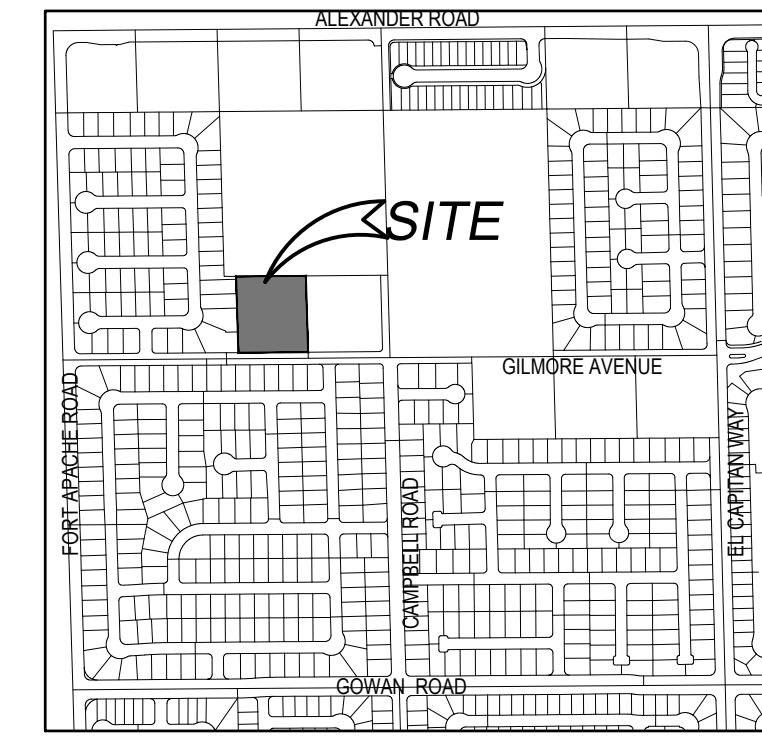
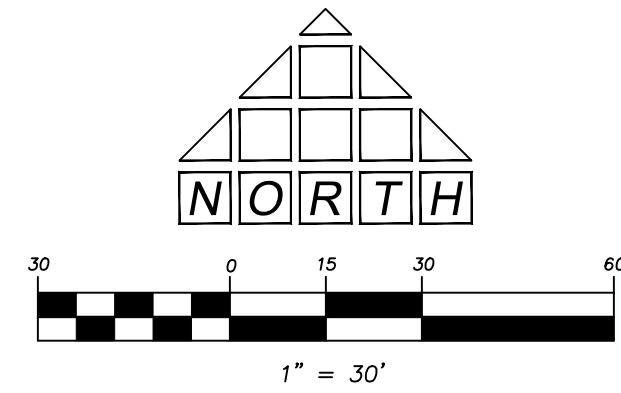
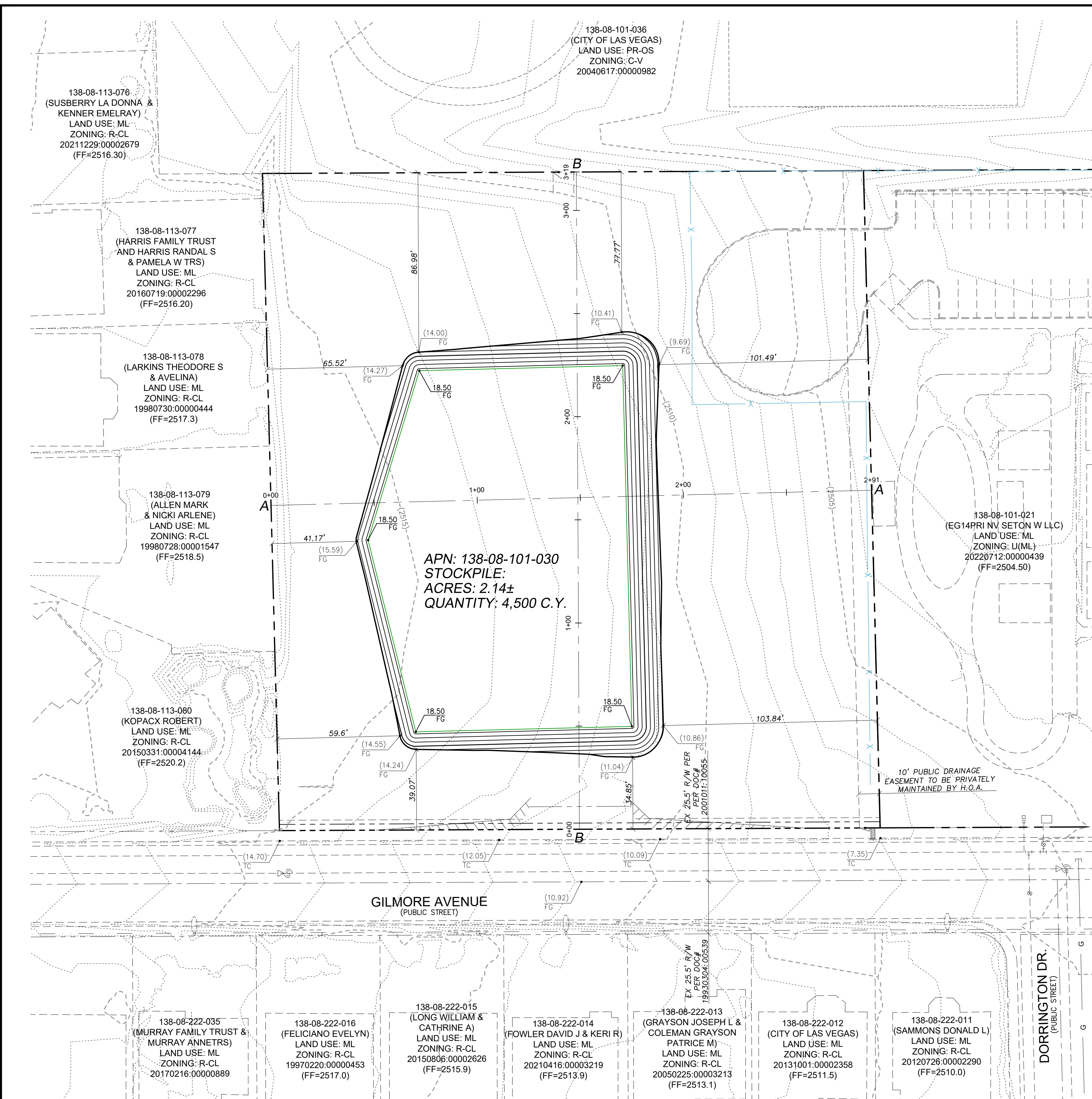


STOCKPILE PLAN FOR THE GILMORE 2.14 IMPROVEMENT PLANS ASSESSOR'S PARCEL NUMBER APN:# 138-08-101-030 2.14 ACRES DEVELOPED



LOCATION MAP
NOT TO SCALE



LEGEND

	PROPERTY LINE / RIGHT-OF-WAY
	"L" TYPE CURB AND GUTTER
	"A" TYPE CURB
	EXISTING CURB AND GUTTER
	PROPOSED WATER LINE (SIZE AS SHOWN)
	PROPOSED SEWER LINE (SIZE AS SHOWN)
	EXISTING UTILITY (AS SHOWN)
	CROSS GUTTER
	WHEELCHAIR RAMP
	CUT OR FILL SLOPE
	MATCH LINES
	PROPOSED ELEVATION (DESCRIPTION AS SHOWN)
	EXISTING ELEVATION (DESCRIPTION AS SHOWN)
	FUTURE DESIGN ELEVATION (DESCRIPTION AS SHOWN)
	TF
	TW
	TRW
	NG
	C.A.
	1
	FF-055
	PAD-047
	EXISTING PAVEMENT TO BE REMOVED AND REPLACED
	EXISTING PAVEMENT TO BE MILLED AND OVERLAID
	NEW ASPHALT PAVEMENT DRIVEWAY
	CUT / FILL LINES
	SIGHT VISIBILITY RESTRICTION ZONES PER STD. DWG. 201.2 (NOTHING OVER 24" IN HEIGHT ALLOWED IN SVZ EXCEPT TRAFFIC CONTROL DEVICES)
	6' SCREEN WALL
	3 COURSE GROUTED WALL
	RETAINING WALL
	FENCE
	A.C. SAWCUT LINE
	EXISTING CMU WALL
	EXISTING EDGE OF A.C. PAVEMENT

STORM WATER MANAGEMENT NOTES

1. THE OWNER, SITE DEVELOPER, CONTRACTOR, AND/OR THEIR AUTHORIZED AGENTS SHALL EACH DAY REMOVE ALL SEDIMENT, MUD, CONSTRUCTION DEBRIS, OR OTHER POTENTIAL POLLUTANTS THAT MAY HAVE BEEN DISCHARGED TO, OR ACCUMULATED IN, THE PUBLIC RIGHTS OF WAY OF CITY OF LAS VEGAS AS A RESULT OF CONSTRUCTION ACTIVITIES ASSOCIATED WITH THIS SITE DEVELOPMENT OR CONSTRUCTION PROJECT. SUCH MATERIALS SHALL BE PREVENTED FROM ENTERING THE STORM SEWER SYSTEM.
2. ADDITIONAL CONSTRUCTION SITE DISCHARGE BEST MANAGEMENT PRACTICES MAY BE REQUIRED OF THE OWNER AND HIS OR HER AGENTS DUE TO UNFORESEEN EROSION PROBLEMS OR IF THE SUBMITTED PLAN DOES NOT MEET THE PERFORMANCE STANDARDS SPECIFIED IN CITY OF LAS VEGAS AND THE LAS VEGAS VALLEY CONSTRUCTION SITE BMP GUIDANCE MANUAL.
3. TEMPORARY OR PERMANENT STABILIZATION PRACTICES WILL BE INSTALLED ON DISTURBED AREAS AS SOON AS PRACTICABLE AND NO LATER THAN 14 DAYS AFTER THE CONSTRUCTION ACTIVITY IN THAT PORTION OF THE SITE HAS TEMPORARILY OR PERMANENTLY CEASED. SOME EXCEPTIONS MAY APPLY; REFER TO THE NEVADA STORMWATER GENERAL PERMIT FOR CONSTRUCTION ACTIVITY NVR100000, SITE STABILIZATION REQUIREMENTS, SCHEDULES, AND DEADLINES.
4. AT A MINIMUM, THE CONTRACTOR OR HIS AGENT SHALL INSPECT ALL DISTURBED AREAS, AREAS USED FOR STORAGE OF MATERIALS AND EQUIPMENT THAT ARE EXPOSED TO PRECIPITATION, VEHICLE ENTRANCE AND EXIT LOCATIONS, AND ALL BMPs WEEKLY, AND WITHIN 24 HOURS AFTER ANY RAIN EVENT OF 0.5 INCHES OR MORE. THE CONTRACTOR OR HIS AGENT SHALL UPDATE OR MODIFY THE STORMWATER POLLUTION PREVENTION PLAN AS NECESSARY. SOME EXCEPTIONS TO WEEKLY INSPECTIONS MAY APPLY, SUCH AS SUSPENSION OF LAND DISTURBANCE ACTIVITIES. REFER TO THE NEVADA STORMWATER GENERAL PERMIT FOR CONSTRUCTION ACTIVITY NVR100000, INSPECTIONS SECTION.
5. ACCUMULATED SEDIMENT IN BMPs SHALL BE REMOVED WITHIN SEVEN DAYS AFTER A STORMWATER RUNOFF EVENT OR PRIOR TO THE NEXT ANTICIPATED STORM EVENT, WHICHEVER IS EARLIER. SEDIMENT MUST BE REMOVED WHEN BMP DESIGN CAPACITY HAS BEEN REDUCED BY 50 PERCENT OR MORE.
6. POST-CONSTRUCTION BMPs (PCBMPs) / CONTROL MEASURES NOTED ON THE GRADING PLANS ARE MANDATORY PERMANENT REGULATORY STORMWATER POLLUTION CONTROLS. THE PCBMPs MUST BE INSTALLED PER THE APPROVED PLANS AND MUST BE PERMANENTLY INSTALLED.

STOCKPILE MATERIALS
STOCKPILE MATERIALS SHALL CONSIST OF CLEAN EARTH FILL UNLESS OTHERWISE APPROVED BY THE CITY OF LAS VEGAS. STOCKPILES WITH HEIGHT OVER 4-FT MUST BE PROVIDED WITH TEMPORARY FENCING.

DISTURBED AREA:
ONSITE : 2.14 ACRES
OFFSITE : 0 ACRES

EARTHWORK QUANTITIES

NOTE: THIS INFORMATION IS RAW VOLUMES AND SHOULD BE USED FOR BIDDING PURPOSES ONLY. ALL CONTRACTORS ARE RESPONSIBLE FOR VERIFYING THEIR OWN EARTHWORK QUANTITIES. THESE ESTIMATES ARE SUBJECT TO CHANGE BASED ON SITE SPECIFIC GEOTECHNICAL EVALUATIONS.

CUT:	0	CY
FILL:	8,344	CY
TOTAL:	8,344	CY IMPORT (RAW)

VISIBILITY ZONE NOTE
NO WALLS, FENCES, SHRUBS, UTILITY APPURTENANCES OR ANY OTHER OBJECT, OTHER THAN TRAFFIC CONTROL DEVICES, FIRE HYDRANTS, TREES, AND STREET LIGHT POLES, MAY BE CONSTRUCTED OR INSTALLED WITHIN THE SIGHT VISIBILITY ZONE UNLESS SAID OBJECT IS MAINTAINED AT LESS THAN 24 INCHES IN HEIGHT, MEASURED FROM TOP OF CURB, OR WHERE NO CURB EXISTS, A HEIGHT OF 27 INCHES MEASURED FROM TOP OF ADJACENT ASPHALT, GRAVEL OR PAVEMENT STREET SURFACE. THIS RESTRICTION EXTENDS ALONG THE SIGHT VISIBILITY LINE THROUGH LANDSCAPED MEDIANS.

PRIVATE STREET NOTE
ALL PRIVATE STREETS ARE P.U.E., PUBLIC SEWER EASEMENTS, AND PRIVATE DRAINAGE EASEMENTS TO BE PRIVATELY MAINTAINED BY HOA.

FOR ALL GRADING AND STREET SECTION SEE DETAIL SHEET D1. FOR ALL NOTES SEE THE GENERAL NOTES SHEET C3.

DISCLAIMER NOTE
EXISTING UTILITY LOCATIONS SHOWN HEREON ARE APPROXIMATE ONLY. IT SHALL BE THE CONTRACTOR'S RESPONSIBILITY TO DETERMINE THE EXACT HORIZONTAL AND VERTICAL LOCATION OF ALL EXISTING UNDERGROUND AND OVERHEAD UTILITIES PRIOR TO COMMENCING CONSTRUCTION. NO REPRESENTATION IS MADE THAT ALL EXISTING UTILITIES ARE SHOWN HEREON. THE ENGINEER ASSUMES NO RESPONSIBILITY FOR UTILITIES NOT SHOWN OR UTILITIES NOT SHOWN IN THEIR PROPER LOCATIONS.
NOTIFY ENGINEER IMMEDIATELY IF DISCREPANCIES ARE ENCOUNTERED.

BASIS OF BEARING
NORTH 89°44'17" EAST - BEING THE SOUTH LINE OF THE NORTH HALF (N 1/2) OF THE NORTHWEST QUARTER (NW 1/4) OF SECTION 8, TOWNSHIP 20 SOUTH, RANGE 60 EAST, M.D.M., CITY OF LAS VEGAS, CLARK COUNTY, NEVADA, AS SHOWN IN BOOK 76, PAGE 52 OF PLATS ON FILE IN THE OFFICE OF THE COUNTY RECORDER, CLARK COUNTY, NEVADA.

BENCHMARK
MONUMENT ID: SLV008NWN6
T20S R60E S08
RIVET AND PLATE IN TOP OF CURB AT SOUTHWEST CORNER OF CAMPBELL ROAD AND ALEXANDER.
ELEVATION = 758.92 METERS (NAV D 88 V.2018)
ELEVATION = 2,489.90 US SURVEY FEET (CALCULATED)

Call before you Dig
Avoid hitting overhead power lines. It's costly.
Call before you dig
Call before you dig
Call before you dig
1-800-642-2444
1-702-227-2929

THOMASON CONSULTING ENGINEERS
7080 LA CIENEGA STREET, SUITE 200
LAS VEGAS, NEVADA 89119
702-932-6125 FAX: 702-932-6129

SIGNATURE LAND HOLDINGS LLC
801 S. RANCHO DRIVE SUITE E-4, LAS VEGAS, NEVADA, 89106
PH: (702) 671-6062

GILMORE 2.14
STOCKPILE PERMIT PLAN

PROJECT NO: 273-21005

REVISION

DATE

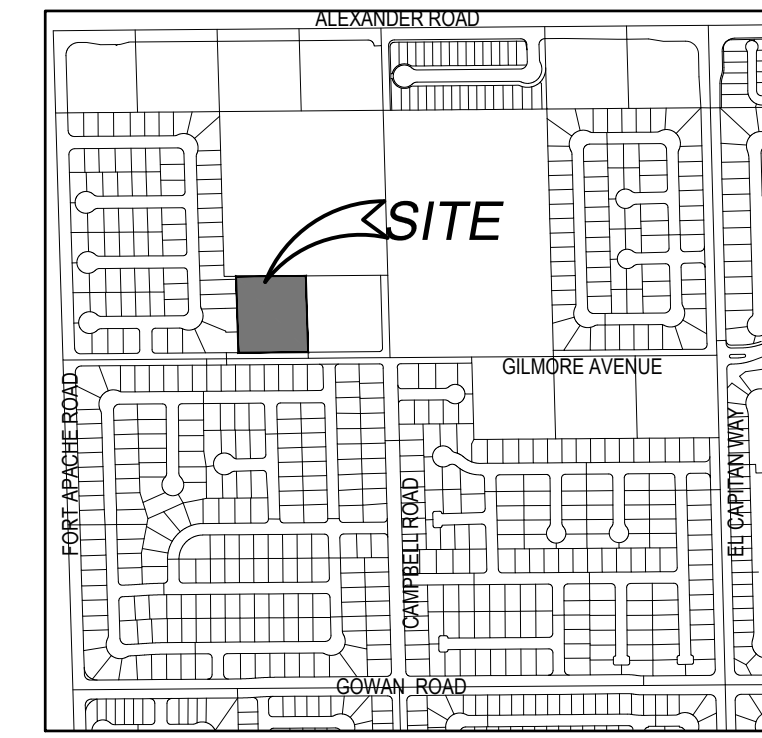
BY

08/17/2023

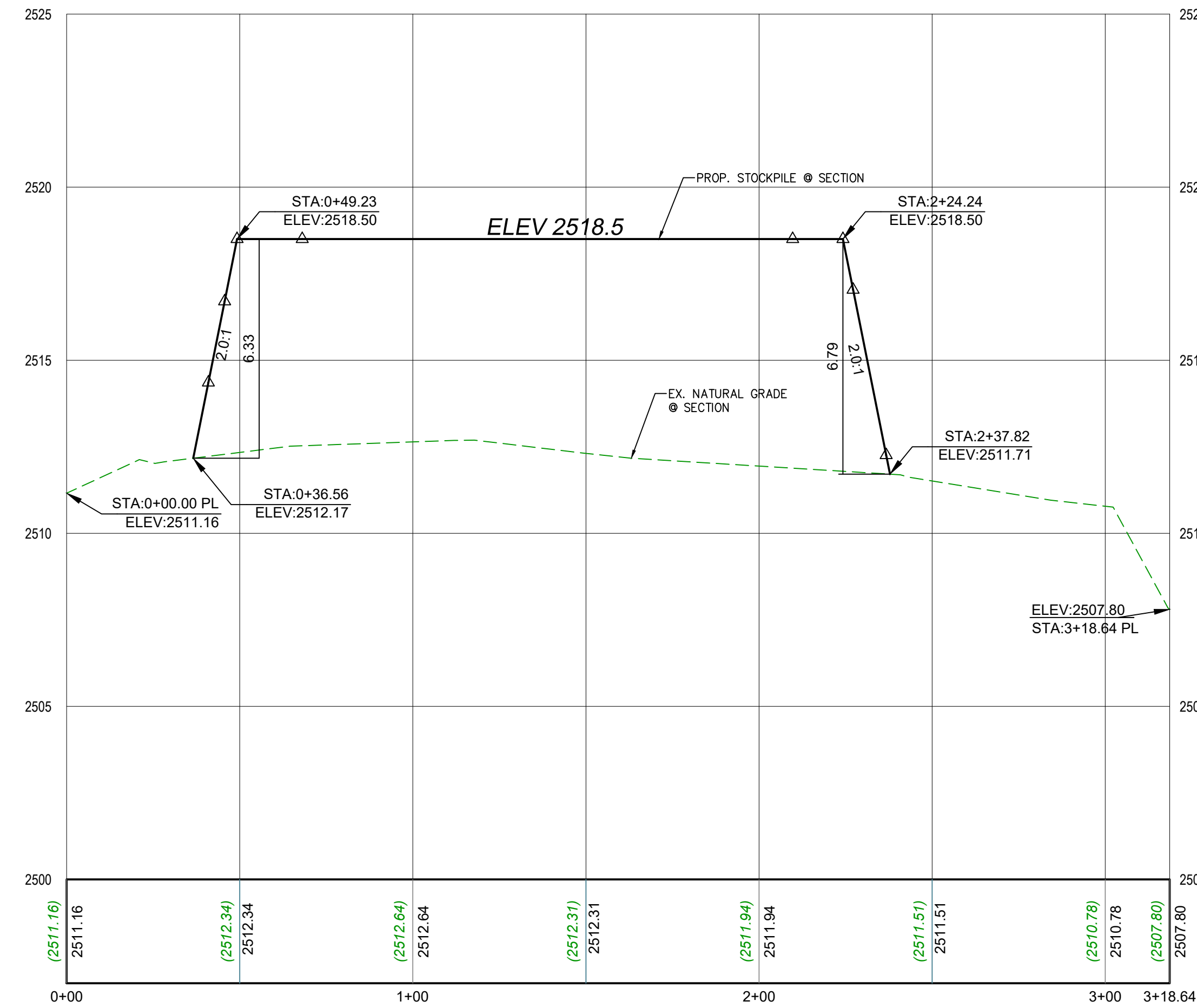
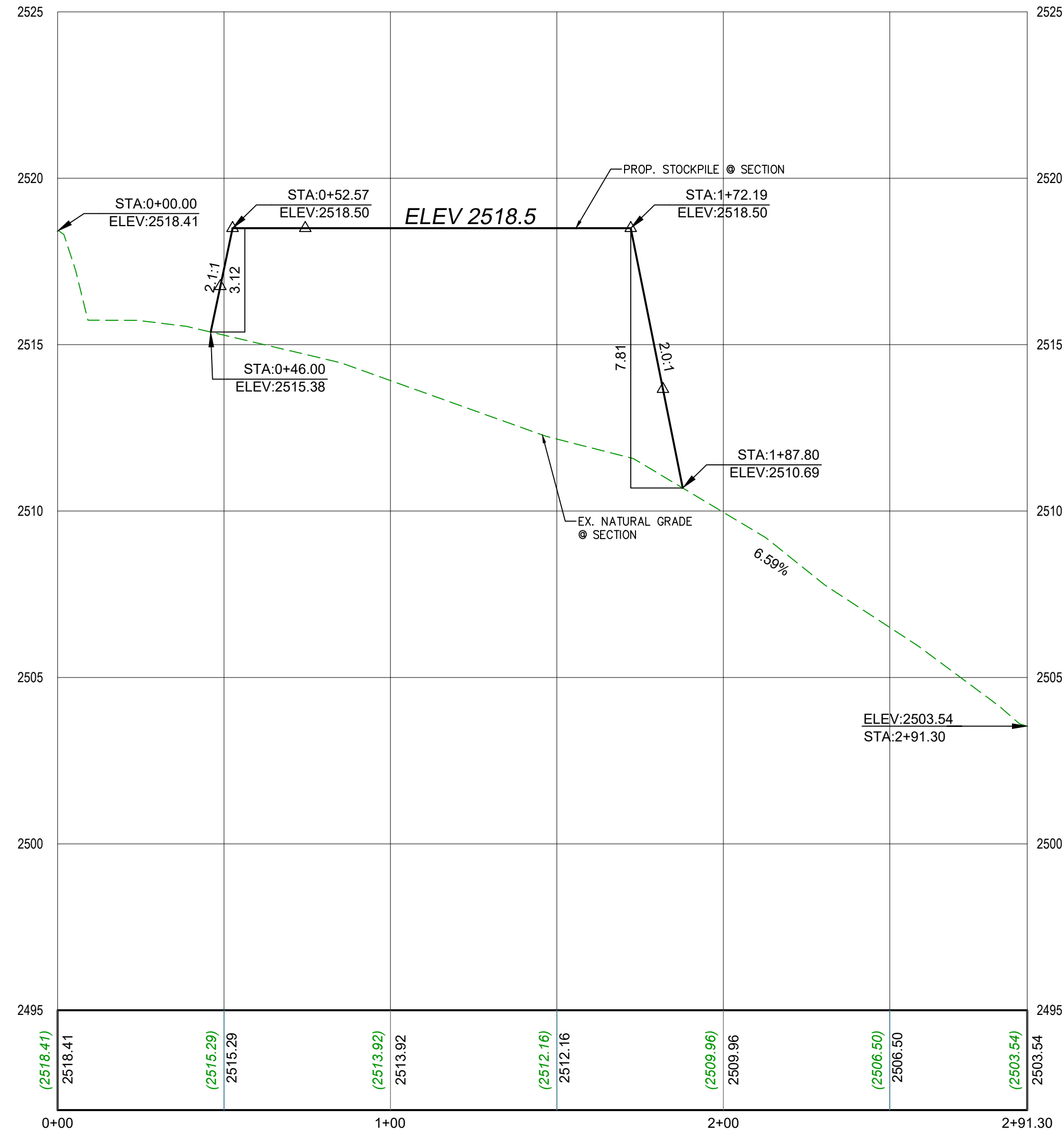
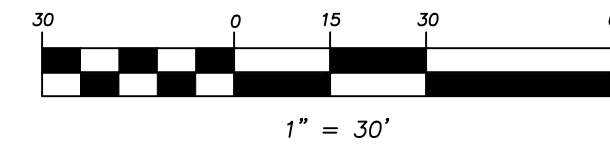
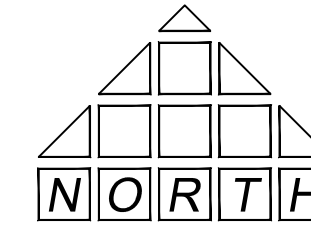
JOHN B. MCKAY
REGISTERED PROFESSIONAL ENGINEER STATE OF NEVADA
EXP. 12-31-23
CIVIL
No. 22439

SHEET SP1
1 OF 2
DRAWING NO.

STOCKPILE PLAN FOR THE GILMORE 2.14 IMPROVEMENT PLANS ASSESSOR'S PARCEL NUMBER APN:# 138-08-101-030 2.14 ACRES DEVELOPED



LOCATION MAP
NOT TO SCALE



LEGEND

- PROPERTY LINE / RIGHT-OF-WAY
- "L" TYPE CURB AND GUTTER
- "A" TYPE CURB
- EXISTING CURB AND GUTTER
- PROPOSED WATER LINE (SIZE AS SHOWN)
- PROPOSED SEWER LINE (SIZE AS SHOWN)
- EXISTING UTILITY (AS SHOWN)
- CROSS GUTTER
- WHEELCHAIR RAMP
- CUT OR FILL SLOPE
- MATCH LINES
- PROPOSED ELEVATION (DESCRIPTION AS SHOWN)
- EXISTING ELEVATION (DESCRIPTION AS SHOWN)
- FUTURE DESIGN ELEVATION (DESCRIPTION AS SHOWN)
- TF TOP OF FOOTING
- TW TOP OF WALL
- TRW TOP OF RETAINING WALL
- NG NATURAL GROUND
- C.A. COMMON AREA/LOT
- 1 LOT NUMBER
- FF-056 FINISHED FLOOR ELEVATION
- PAD-047 PAD ELEVATION
- EXISTING PAVEMENT TO BE REMOVED AND REPLACED
- EXISTING PAVEMENT TO BE MILLED AND OVERLAYED
- NEW ASPHALT PAVEMENT DRIVEWAY
- CUT / FILL LINES
- SIGHT VISIBILITY RESTRICTION ZONES PER STD. DWG. 2201.2 (NOTHING OVER 24" IN HEIGHT ALLOWED IN SVZ EXCEPT TRAFFIC CONTROL DEVICES)
- 6' SCREEN WALL
- 3 COURSE GROUTED WALL
- RETAINING WALL
- FENCE
- A.C. SAWCUT LINE
- EXISTING CMU WALL
- EXISTING EDGE OF A.C. PAVEMENT

STORM WATER MANAGEMENT NOTES

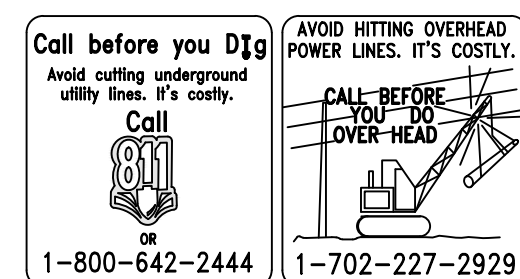
1. THE OWNER, SITE DEVELOPER, CONTRACTOR, AND/OR THEIR AUTHORIZED AGENTS SHALL EACH DAY REMOVE ALL SEDIMENT, MUD, CONSTRUCTION DEBRIS, OR OTHER POTENTIAL POLLUTANTS THAT MAY HAVE BEEN DISCHARGED TO, OR ACCUMULATED IN, THE PUBLIC RIGHTS OF WAY OF CITY OF LAS VEGAS AS A RESULT OF CONSTRUCTION ACTIVITIES ASSOCIATED WITH THIS SITE DEVELOPMENT OR CONSTRUCTION PROJECT. SUCH MATERIALS SHALL BE PREVENTED FROM ENTERING THE STORM SEWER SYSTEM.
2. ADDITIONAL CONSTRUCTION SITE DISCHARGE BEST MANAGEMENT PRACTICES MAY BE REQUIRED OF THE OWNER AND HIS OR HER AGENTS DUE TO UNFORESEEN EROSION PROBLEMS OR IF THE SUBMITTED PLAN DOES NOT MEET THE PERFORMANCE STANDARDS SPECIFIED IN CITY OF LAS VEGAS AND THE LAS VEGAS VALLEY CONSTRUCTION SITE BMP GUIDANCE MANUAL.
3. TEMPORARY OR PERMANENT STABILIZATION PRACTICES WILL BE INSTALLED ON DISTURBED AREAS AS SOON AS PRACTICABLE AND NO LATER THAN 14 DAYS AFTER THE CONSTRUCTION ACTIVITY IN THAT PORTION OF THE SITE HAS TEMPORARILY OR PERMANENTLY CEASED. SOME EXCEPTIONS MAY APPLY; REFER TO THE NEVADA STORMWATER GENERAL PERMIT FOR CONSTRUCTION ACTIVITY NVR100000, SITE STABILIZATION REQUIREMENTS, SCHEDULES, AND DEADLINES.
4. AT A MINIMUM, THE CONTRACTOR OR HIS AGENT SHALL INSPECT ALL DISTURBED AREAS, AREAS USED FOR STORAGE OF MATERIALS AND EQUIPMENT THAT ARE EXPOSED TO PRECIPITATION, VEHICLE ENTRANCE AND EXIT LOCATIONS, AND ALL BMPs WEEKLY, AND WITHIN 24 HOURS AFTER ANY RAIN EVENT OF 0.5 INCHES OR MORE. THE CONTRACTOR OR HIS AGENT SHALL UPDATE OR MODIFY THE STORMWATER POLLUTION PREVENTION PLAN AS NECESSARY. SOME EXCEPTIONS TO WEEKLY INSPECTIONS MAY APPLY, SUCH AS SUSPENSION OF LAND DISTURBANCE ACTIVITIES. REFER TO THE NEVADA STORMWATER GENERAL PERMIT FOR CONSTRUCTION ACTIVITY NVR100000, INSPECTIONS SECTION.
5. ACCUMULATED SEDIMENT IN BMPs SHALL BE REMOVED WITHIN SEVEN DAYS AFTER A STORMWATER RUNOFF EVENT OR PRIOR TO THE NEXT ANTICIPATED STORM EVENT, WHICHEVER IS EARLIER. SEDIMENT MUST BE REMOVED WHEN BMP DESIGN CAPACITY HAS BEEN REDUCED BY 50 PERCENT OR MORE.
6. POST-CONSTRUCTION BMPs (PCBMPs) / CONTROL MEASURES NOTED ON THE GRADING PLANS ARE MANDATORY PERMANENT REGULATORY STORMWATER POLLUTION CONTROLS. THE PCBMPs MUST BE INSTALLED PER THE APPROVED PLANS AND MUST BE PERMANENTLY INSTALLED.

BASIS OF BEARING
NORTH 89°44'17" EAST - BEING THE SOUTH LINE OF THE NORTH HALF (N 1/2) OF THE NORTHWEST QUARTER (NW 1/4) OF SECTION 8, TOWNSHIP 20 SOUTH, RANGE 60 EAST, M.D.M., CITY OF LAS VEGAS, CLARK COUNTY, NEVADA, AS SHOWN IN BOOK 76, PAGE 52 OF PLATS ON FILE IN THE OFFICE OF THE COUNTY RECORDER, CLARK COUNTY, NEVADA.

BENCHMARK
MONUMENT ID: 5LV008NWN6
T20S R60E S08

RIVET AND PLATE IN TOP OF CURB AT SOUTHWEST CORNER OF CAMPBELL ROAD AND ALEXANDER.

ELEVATION = 758.92 METERS (NAV D 88 V.2018)
ELEVATION = 2,489.90 US SURVEY FEET (CALCULATED)



DISCLAIMER NOTE
EXISTING UTILITY LOCATIONS SHOWN HEREON ARE APPROXIMATE ONLY. IT SHALL BE THE CONTRACTOR'S RESPONSIBILITY TO DETERMINE THE EXACT HORIZONTAL AND VERTICAL LOCATION OF ALL EXISTING UNDERGROUND AND OVERHEAD UTILITIES PRIOR TO COMMENCING CONSTRUCTION. NO REPRESENTATION IS MADE THAT ALL EXISTING UTILITIES ARE SHOWN HEREON. THE ENGINEER ASSUMES NO RESPONSIBILITY FOR UTILITIES NOT SHOWN OR UTILITIES NOT SHOWN IN THEIR PROPER LOCATIONS.
NOTIFY ENGINEER IMMEDIATELY IF DISCREPANCIES ARE ENCOUNTERED.

PRIVATE STREET NOTE
ALL PRIVATE STREETS ARE P.U.E., PUBLIC SEWER EASEMENTS, AND PRIVATE DRAINAGE EASEMENTS TO BE PRIVATELY MAINTAINED BY HOA.

**FOR ALL GRADING AND STREET SECTION
SEE DETAIL SHEET D1. FOR ALL NOTES
SEE THE GENERAL NOTES SHEET C3.**

DISTURBED AREA:
ONSITE : 2.14 ACRES
OFFSITE : 0 ACRES

VISIBILITY ZONE NOTE
NO WALLS, FENCES, SHRUBS, UTILITY APPURTENANCES OR ANY OTHER OBJECT, OTHER THAN TRAFFIC CONTROL DEVICES, FIRE HYDRANTS, TREES, AND STREET LIGHT POLES, MAY BE CONSTRUCTED OR INSTALLED WITHIN THE SIGHT VISIBILITY ZONE UNLESS SAID OBJECT IS MAINTAINED AT LESS THAN 24 INCHES IN HEIGHT, MEASURED FROM TOP OF CURB, OR WHERE NO CURB EXISTS, A HEIGHT OF 27 INCHES MEASURED FROM TOP OF ADJACENT ASPHALT, GRAVEL OR PAVEMENT STREET SURFACE. THIS RESTRICTION EXTENDS ALONG THE SIGHT VISIBILITY LINE THROUGH LANDSCAPED MEDIANS.

EARTHWORK QUANTITIES
NOTE:
THIS INFORMATION IS RAW VOLUMES AND SHOULD BE USED FOR BIDDING PURPOSES ONLY. ALL CONTRACTORS ARE RESPONSIBLE FOR VERIFYING THEIR OWN EARTHWORK QUANTITIES. THESE ESTIMATES ARE SUBJECT TO CHANGE BASED ON SITE SPECIFIC GEOTECHNICAL EVALUATIONS.

CUT: 0 CY
FILL: 8,344 CY
TOTAL: 8,344 CY IMPORT (RAW)

GRADING NOTE:
SITE SHALL BE GRADED IN ACCORDANCE WITH THE APPROVED GEOTECHNICAL REPORT.

REV.	DATE	BY

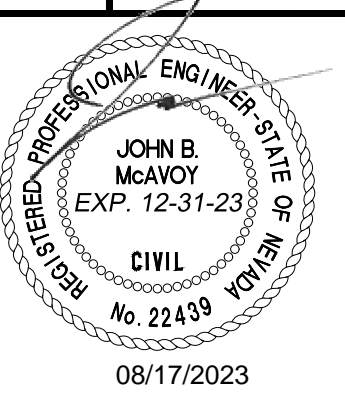
SCALE:	
DRAWN BY:	
DESIGNED BY:	
CHECKED BY:	
COMMENTS ADDRESSED BY:	
PROJECT NO.	273-21005

THOMASON CONSULTING ENGINEERS
7080 L.A. CIENEGA STREET, SUITE 200
LAS VEGAS, NEVADA 89119
702-932-6125 FAX: 702-932-6129

SIGNATURE LAND HOLDINGS LLC
801 S. RANCHO DRIVE SUITE E-4, LAS VEGAS, NEVADA, 89106
PH: (702) 671-6062 FAX:

**GILMORE 2.14
STOCKPILE PERMIT PLAN - SECTIONS**

PH: (702) 671-6062
FAX:



08/17/2023

SHEET **SP2**
2 OF 2
DRAWING NO.