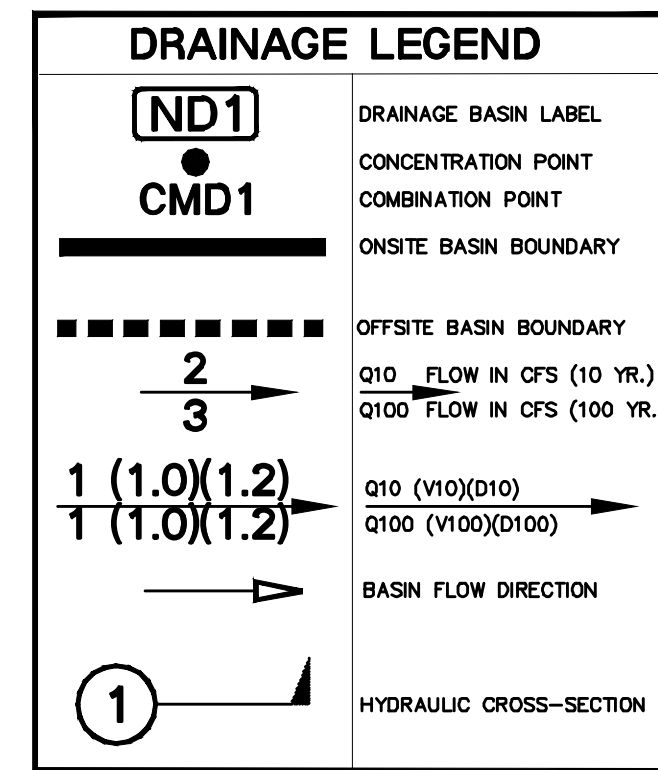


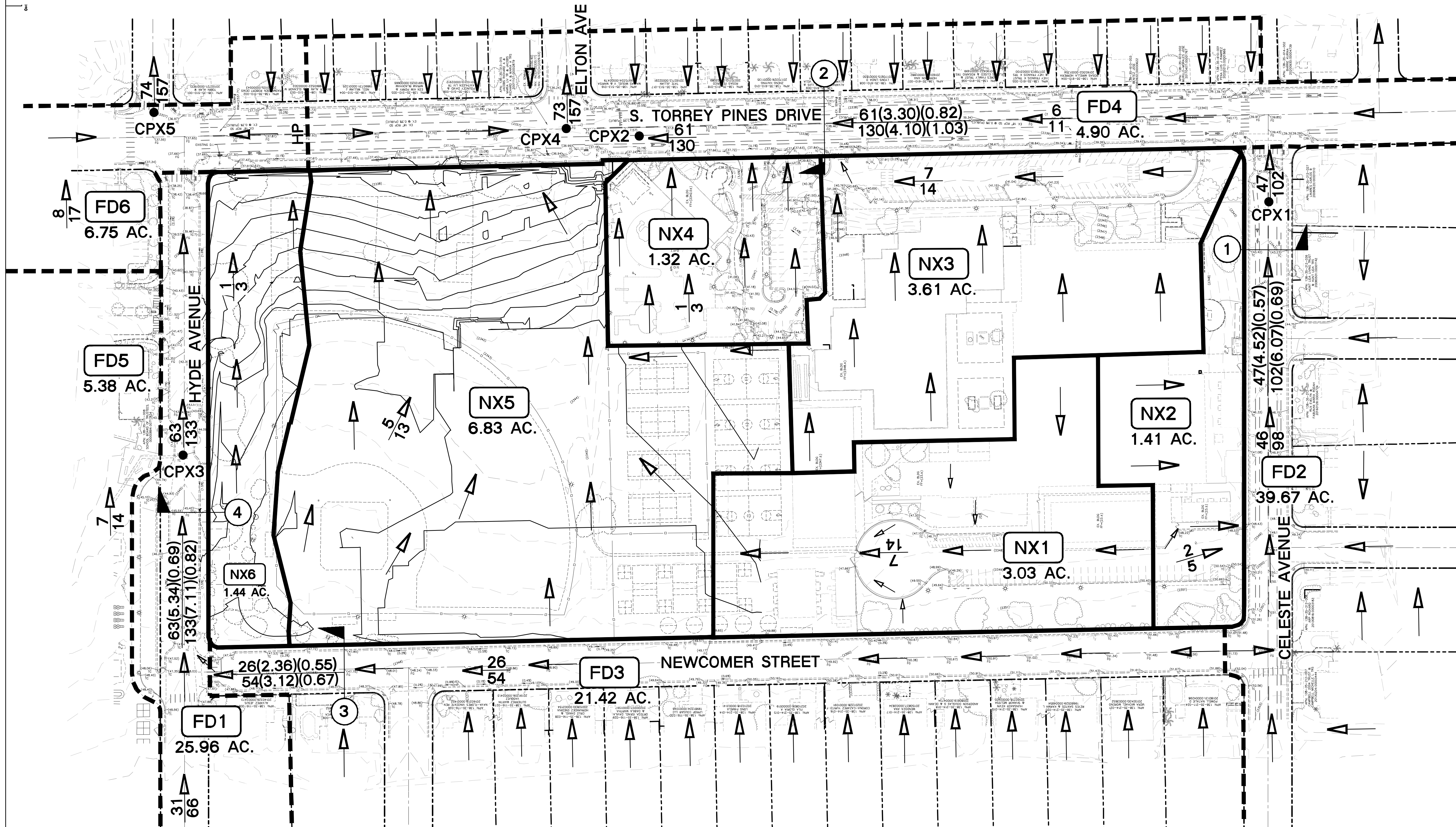
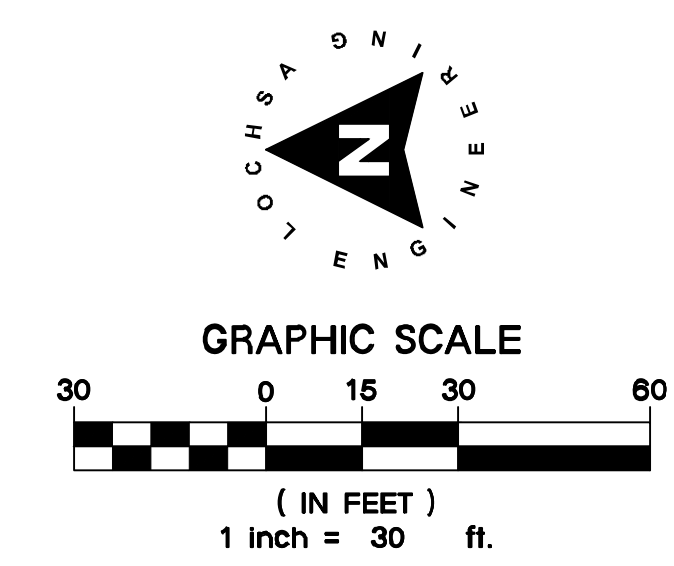
*SEE EXHIBIT 'OF1' FOR OFFSITE BASIN MAP (APP. 'C')

Street Flow Summary (Existing Condition)							
10-year, 6-hour Storm							
Street	Right of Way Width (ft)	Hydraulic Cross-Section Identifier	10-Year Flow [Q10] (cfs)	10-Year Velocity [V] (fps)	10-Year Flow Depth [d] (ft)	10-Year Velocity x Depth [v x d]	Dry Lane Width (Within 1/2 ROW) (ft)
Celeste Avenue	60	1	47	4.52	0.57	2.58	N/A
S. Torrey Pines Drive	80	2	61	3.30	0.82	2.71	Meets
Newcomer Street	60	3	26	2.36	0.55	1.30	N/A
Hyde Avenue	60	4	63	5.34	0.69	3.68	N/A

Street Flow Summary (Existing Condition)							
100-year, 6-hour Storm							
Street	Right of Way Width (ft)	Hydraulic Cross-Section Identifier	100-Year Flow [Q100] (cfs)	100-Year Velocity [V] (fps)	100-Year Flow Depth [d] (ft)	100-Year Velocity x Depth [v x d]	
Celeste Avenue	60	1	102	6.07	0.69	4.19	
S. Torrey Pines Drive	80	2	130	4.10	1.03	4.22	
Newcomer Street	60	3	54	3.12	0.67	2.09	
Hyde Avenue	60	4	133	7.11	0.82	5.83	



Peak Flow Summary Existing Condition			
HEC-1 ID	Area (Acres)	10-year Flow (cfs)	100-year Flow (cfs)
FD2	39.67	46	98
NX2	1.41	3	5
CPX1	-	47	102
NX3	3.61	6	12
NX4	1.32	2	4
FD4	4.90	7	13
CPX2	-	62	132
NX1	3.03	5	9
NX5	6.83	7	17
CPX4	-	74	158
FD3	21.42	26	54
FD1	25.96	31	66
FD5	5.38	7	14
CPX3	-	63	133
FD6	8.40	10	21
NX6	1.44	1	3
CPX5	-	74	157



LEGEND	CL OR SURVEY LINE	PROPERTY LINE	EASEMENT LINE	SAWCUT LINE	SCARP LINE	DESCRIPTION:	BUILDING OUTLINE	EDGE OF PAVEMENT	"A" TYPE CURBS	"L" TYPE CURBS	WALLS	CONTOUR LINES	AC PAVEMENT	CONCRETE	SPOT ELEVATIONS	SIGNS	MANHOLE W/ DESCRIPTION	MANHOLE DESCRIPTIONS	FIRE HYDRANTS	GATE VALVES	REDUCERS	CLEAN OUTS	UTILITY BOX OR VAULT	60' ROW LED STREETLIGHTS	80' ROW LED STREETLIGHTS	100' ROW LED STREETLIGHTS	INTERSECTION STREETLIGHTS
	---	---	---	---	---	EXISTING:	---	---	---	---	---	---	---	---	---	---	---	---	---	---	---	---	---	---	---	---	---
	---	---	---	---	---	PROPOSED:	---	---	---	---	---	---	---	---	---	---	---	---	---	---	---	---	---	---	---	---	---

REVISIONS:

REV.	DESCRIPTION	DATE

DATE: 06/16/2023

PROJECT NO.: 221056

ENGINEER: EDGAR LEON

CHECKED BY: JWIN

DATE: 06/16/2023

PROJECT NO.: 221056

CONSULTANT: LOCHSA ENGINEERING

PROJECT TITLE: CLARK COUNTY SCHOOL DISTRICT GARSIDE MIDDLE SCHOOL PHASE 1 & PHASE 2

DRAWING TITLE: ONSITE DRAINAGE MAP EXISTING CONDITION

FACILITY & ADDRESS: LAS VEGAS, NEVADA

MPID: 0001644

CONSTRUCTION MGMT: DATE:

BUILDING DEPARTMENT: DATE:

ASBESTOS WORK IS: REQUIRED NOT REQUIRED

SHEET NO: DR1

1 OF 2

6/28/2023 12:23 PM
T:\CADD\221056\Drawings\Drainage\DR1.dwg