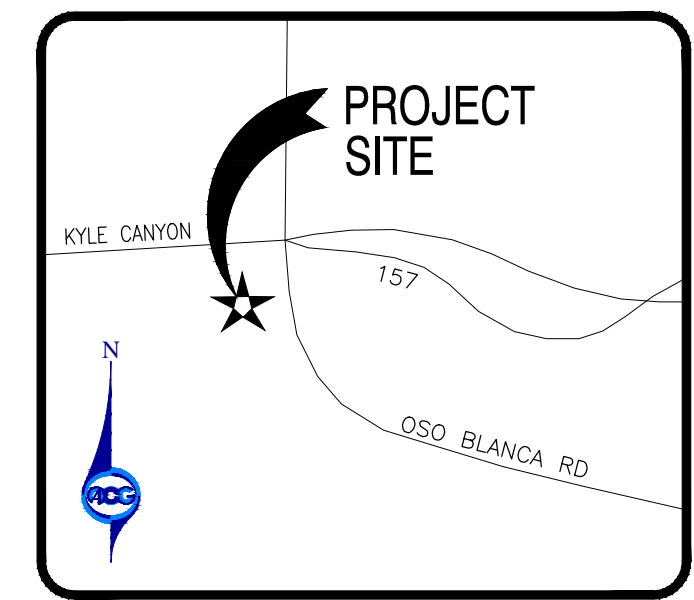
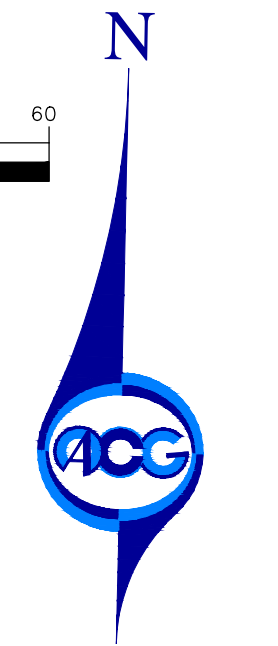
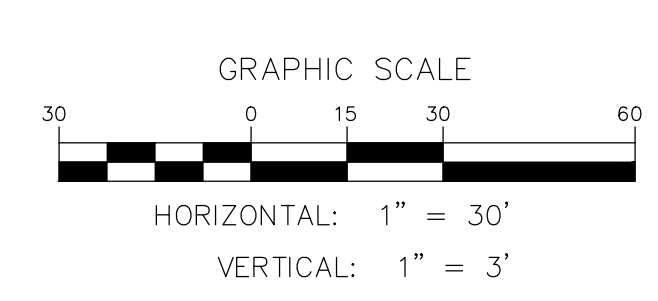
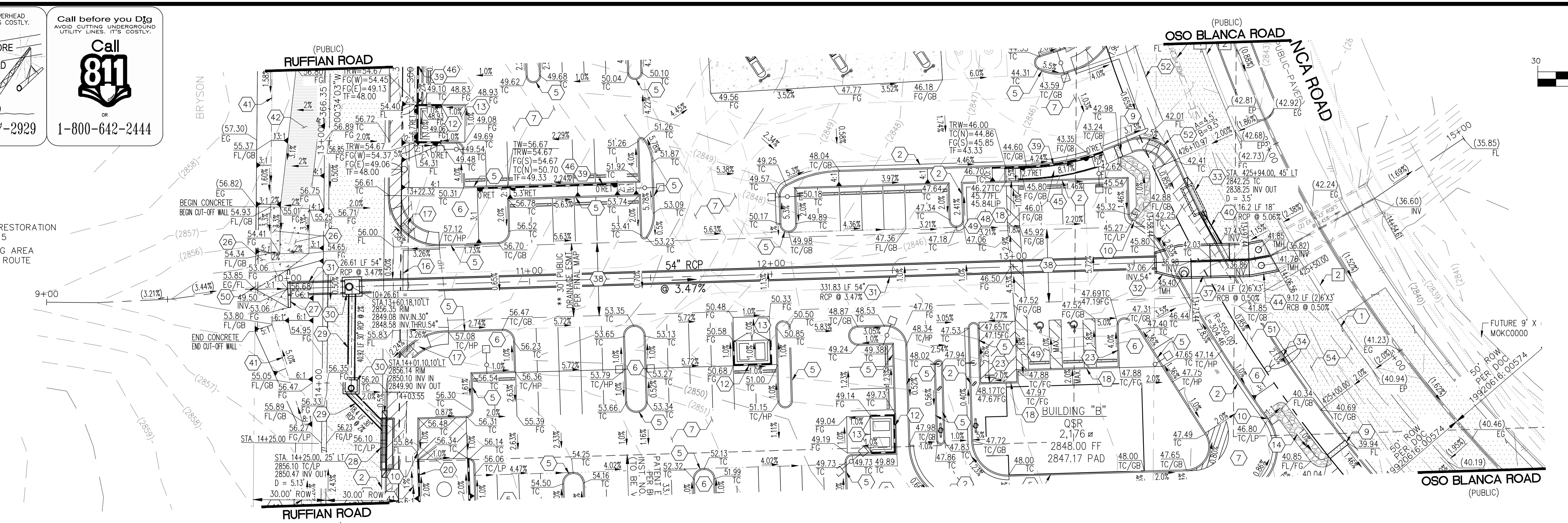


AVOID HITTING OVERHEAD POWER LINES. IT'S COSTLY.  
CALL BEFORE YOU DIG  
OR  
1-702-227-2929  
1-800-642-2444

**LEGEND**

- AC PAVEMENT
- CONCRETE
- LIMITS OF PAVEMENT RESTORATION PER CCAUSD NO. 500.5
- PROPOSED NO PARKING AREA AND ADA ACCESSIBLE ROUTE



**SITE DEMOLITION NOTES**

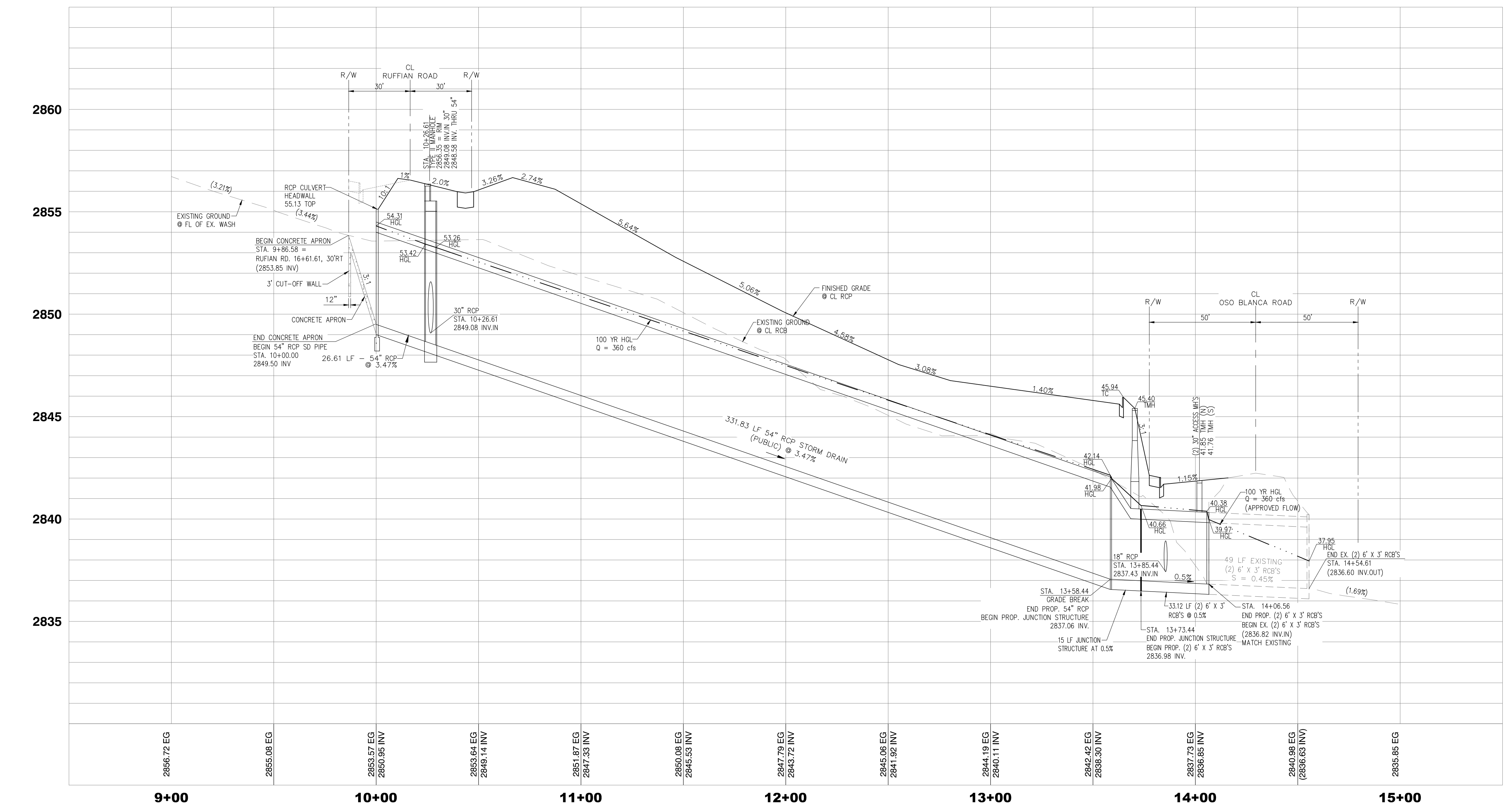
- REMOVE EXISTING 24" RCP STORM DRAIN PIPE.
- REMOVE EXISTING PAVEMENT STRIPING.

**CONSTRUCTION NOTES**

- SAWCUT & MATCH EXISTING PAVEMENT.
- CONSTRUCT 1" CURB AND GUTTER PER CCAUSD NO. 216.
- CONSTRUCT 3" WIDE VALLEY GUTTER. REFER TO DETAIL 5, SHEET C15.
- CONSTRUCT ON-SITE CONCRETE SIDEWALK PER DETAIL 6, SHEET C15.
- CONSTRUCT MODIFIED "A" TYPE CURB PER DETAIL 1, SHEET C15.
- LANDSCAPE AREA (DESIGNED BY OTHERS)
- INSTALL ON-SITE PAVEMENT (2" AC FOR AUTO PARKING, 3" AC FOR MAIN CORRIDOR AND TRUCK ACCESS) OVER 4" TYPE II AGGREGATE BASE (95% COMPACTION), 6" MINIMUM SCARIFICATION AND COMPACTION. REFER TO DETAIL 2, SHEET C15.
- INSTALL 4" OFF-SITE PAVEMENT OVER 8" TYPE II AGGREGATE BASE (95% COMPACTION), 6" MINIMUM SCARIFICATION AND COMPACTION. (KYLE CANYON RD AND OSO BLANCA RD). REFER TO DETAIL 11, SHEET C15.
- CONSTRUCT SIDEWALK DRAIN PER CCAUSD NO. 236.
- PROVIDE 2" CURB OPENING TO ALLOW RUN-OFF TO SPILL OUT OF CURB. REFER TO DETAIL 10, SHEET C15.
- INSTALL 8" X 6.5" PRECAST BUMPER BLOCKS PER CCAUSD NO. 238.
- CONSTRUCT TRASH ENCLOSURE PER ARCHITECTURAL PLANS.
- CONSTRUCT CONCRETE APRON FOR TRASH ENCLOSURE (6" CONCRETE SLAB WITH 6X6/14X14 W.W.F.) OVER 8" TYPE II AGGREGATE BASE. REFER TO DETAIL 4, SHEET C15.
- FLOWLINE OF PROPOSED SWALE PER BMP DESIGN CRITERIA, D<sub>50</sub> 4 INCHES MIN., THICKNESS = 8 INCHES, 4:1 MAXIMUM SIDE SLOPES, 40' LONG X 6' WIDE TYP. (4' MIN.). REFER TO LIMITS SHOWN ON PLAN AND DETAIL 9, SHEET C15.
- LIMITS OF PAVEMENT RESTORATION PER CCAUSD NO. 500.5. TRENCH AND BACKFILL PER CCAUSD NO. 503.
- CONSTRUCT 8" CONCRETE CROSS GUTTER AND SPANDRELS PER CCAUSD NO. 228 FOR COMMERCIAL DRIVEWAY PER CCAUSD NO. 222A & 225.
- CONSTRUCT CONCRETE SIDEWALK RAMP WITH DETECTABLE TACTILE WARNINGS PER CCAUSD NO. 235. (CASE I, A, B, & R UNLESS OTHERWISE NOTED). 2% MAX. SLOPE IN LANDING AREA.
- CONSTRUCT ZERO-INCH CURB FACE PER DETAIL 7, SHEET C15.
- CONSTRUCT CONCRETE CURB RAMP. ENSURE 8.3% MAXIMUM LONGITUDINAL/RUNNING SLOPE AND 2% MAXIMUM TRANSVERSE/CROSS SLOPE. RAMP LANDINGS TO BE 2% MAXIMUM SLOPE. EACH DIRECTION. REFER TO ON-SITE CONCRETE SIDEWALK DETAIL 6, SHEET C15.
- CONSTRUCT 6" HIGH CMU MASONRY SCREEN WALL PER SOUTHERN NEVADA BUILDING OFFICIALS REGIONAL STANDARD B-100-1.
- CONSTRUCT MASONRY RETAINING WALL (WALL HEIGHTS VARY SEE PLANS) WITH 8" THICK SOLID GROUTED CMU WALL 2" MINIMUM ABOVE PER STRUCTURAL DESIGN BY OTHERS.
- CONSTRUCT CONCRETE PAVEMENT IN FUEL DISPENSING AREA. 6" CONCRETE OVER 8" TYPE II AGGREGATE BASE. REFER TO DETAIL 3, SHEET C15.
- CONSTRUCT 0-INCH TO 6-INCH CURB FACE TRANSITION.
- CONSTRUCT OFF-SITE CONCRETE SIDEWALK PER CCAUSD NO. 234.
- INSTALL 6-INCH PVC DRAIN PIPE UNDER SIDEWALK.
- CONSTRUCT CONCRETE PAVEMENT FOR DRIVABLE MAINTENANCE ACCESS (6" CONCRETE SLAB WITH FIBER MESH REINFORCEMENT) OVER 8" TYPE II AGGREGATE BASE. REFER TO DETAIL 3, SHEET C15.
- CONSTRUCT 0" SKEW RCP CULVERT HEADWALL PER NDOT STANDARD DWG. NO. DS-19A & B.
- CONSTRUCT 20" TYPE "C-D" MODIFIED DROP INLET PER CCAUSD NO. 412.1. PROVIDE STORM WATER QUALITY MESSAGE PER CCAUSD NO. 421.
- INSTALL 30" CLASS III RCP STORM DRAIN.
- CONSTRUCT TYPE II STORM DRAIN MANHOLE PER CCAUSD NO. 405.
- INSTALL 54" CLASS III RCP STORM DRAIN.
- CONSTRUCT 15 LF JUNCTION STRUCTURE WITH 30" ACCESS MANHOLE BETWEEN PROPOSED 54" RCP AND PROPOSED DUAL 6" X 3' RCP. REFER TO STRUCTURAL DETAILS ON SHEET 52.
- CONSTRUCT 12.5" TYPE "C-D" MODIFIED DROP INLET PER CCAUSD NO. 412.1 WITH THREE (3) CURVED VANED GRATES (2.5" LONG EACH), (12.5" CURB OPENING LENGTH) PROVIDE STORM WATER QUALITY MESSAGE PER CCAUSD NO. 421.
- CONSTRUCT NDOT CONCRETE CURB & GUTTER PER NDOT STANDARD DWG. NO. CS-1 (TYPE 5).
- CONSTRUCT NDOT CONCRETE SIDEWALK PER NDOT STANDARD DWG. NO. CS-2.
- CONSTRUCT TYPE "A" SIDEWALK CURB RAMP PER NDOT STANDARD DETAILS CS-3A AND CS-3B.
- INSTALL DUAL 6" WIDE BY 3" HIGH RCP CULVERT PER NDOT STANDARD DWG. NO. CH-3A AND CH-3B.
- 30' WIDE SUBSURFACE PUBLIC DRAINAGE EASEMENT WITH SURFACE TO BE PRIVATELY MAINTAINED BY PROPERTY OWNER.
- CONSTRUCT MASONRY RETAINING WALL (WALL HEIGHTS VARY SEE PLANS) PER STRUCTURAL DESIGN BY OTHERS.
- INSTALL 18" CLASS III RCP STORM DRAIN.
- FLOWLINE OF SWALE. PROVIDE POSITIVE DRAINAGE AS INDICATED PER GRADES ON PLAN.
- INSTALL 12" WIDE MAINTENANCE ACCESS RAMP AND APRON TO RCP. 4" MINIMUM AC PAVEMENT OVER 6" TYPE II AGGREGATE BASE FOR THE RAMP. 6" CONCRETE OVER 8" TYPE II AGGREGATE BASE FOR THE BOTTOM APRON. TYPE II AGGREGATE BASE COMPACTED TO 95% DENSITY. 6" MINIMUM SCARIFICATION AND COMPACTION OF SUBBASE.
- INSTALL 3" OFF-SITE PAVEMENT OVER 4" TYPE II AGGREGATE BASE (95% COMPACTION), 6" MINIMUM SCARIFICATION AND COMPACTION. (RUFFIAN RD). REFER TO DETAIL 13, SHEET C15.
- INSTALL DUAL 6" WIDE BY 3" HIGH RCP CULVERT PER NDOT STANDARD DWG. NO. CH-3A AND CH-3B WITH 30" MANHOLE ACCESS FOR EACH CELL (PER SHEET S1). 27" TOTAL ANGLE DEFLECTION.
- INSTALL ADA RAMP (MAX. LONGITUDINAL SLOPE OF 8.3% WITH ADA COMPLIANT HANDRAILS, 2% MAX. SLOPES AT RAMP LANDING).
- INSTALL 36" TALL CMU WALL ABOVE MASONRY RETAINING WALL FOR HEADLIGHT SCREENING.
- CONSTRUCT TURNED DOWN THICKENED SIDEWALK EDGE PER DETAIL 11, SHEET C15.
- FLATTEN PAN OF GUTTER TO A MINIMUM OF 5/8" IN AREAS ALONG ADA ACCESSIBILITY. CONSTRUCT GUTTER PAN TRANSITION TO ENSURE POSITIVE FLOW IN GUTTER AND THROUGH TRANSITION.
- INSTALL CONTINUOUS DETECTABLE TACTILE WARNINGS CONSISTING OF RAISED TRUNCATED DOMES WHICH CONTRAST VISUALLY WITH ADJACENT SURFACES. REFER TO CCAUSD NO. 235 AND ADAAG SECTION 4.29.
- INSTALL 3" DEEP, 12" WIDE CONCRETE CUT-OFF WALL.
- CONSTRUCT NDOT CONCRETE SIDEWALK PER NDOT STANDARD DWG. NO. CS-2. SEE DETAIL ON SHEET C17.
- CONSTRUCT NDOT COMMERCIAL DRIVEWAY PER NDOT STANDARD DWG. NO. CS-12. CURB RAMPS SHALL BE CONSTRUCTED PER NDOT STANDARD DWGS. CS-3A TO CS-3D. SEE DETAILS ON SHEETS C17, C18 AND C19.
- CONSTRUCT NDOT TYPE 2 CURB PER NDOT STANDARD DWG. NO. CS-1 AND NDOT CONCRETE MEDIAN ISLAND PER NDOT STANDARD DWG. NO. CS-5. SEE DETAILS ON SHEETS C17 AND C18.
- CONSTRUCT 1" UTILITY OVER 6" OFF-SITE PAVEMENT OVER 8" TYPE II AGGREGATE BASE (95% COMPACTION), 6" MINIMUM SCARIFICATION AND COMPACTION. REFER TO DETAIL 11, SHEET C15.

**STORMWATER INLET CONCRETE STAMP**

ALL STORM DRAIN DROP INLETS TO BE CONSTRUCTED WITH A CONCRETE STAMP AND SIGN DETAIL PER USDOCA DRAWING NO. 421 (STORMWATER QUALITY MANAGEMENT STAMP AND SIGN DETAIL).



APPROVAL	REVISIONS	DESCRIPTION	APPROV. BY	DATE

**KYLE CANYON ROAD AND OSO BLANCA ROAD**

**54-INCH RCP PLAN & PROFILE**

APN: 126-01-702-007 / 008  
10051 KYLE CANYON ROAD  
LAS VEGAS, NV 89166

**ACC DESIGN**

4310 CAMERON ST, SUITE 12-A  
LAS VEGAS, NEVADA 89103  
OFFICE: 702.448.8737  
WEBSITE: WWW.ACCDESIGN.COM

ENGINEER'S SEAL

**RANDOLPH SKOPINSKI**  
PROFESSIONAL ENGINEER  
No. 14985  
CIVIL  
EXP: 06-30-24

DATE: 4/5/2023  
PROJ. NO: 200203  
DRAWN BY: ARB  
CHECKED BY: RAS  
SCALE: AS NOTED  
JURISDICTION: CLV

DRAWING NUMBER:  
**C7**  
SHEET 7 OF 22  
AGENCY NUMBER:  
**CLV #L23-00339**

Z:\PROJECTS\_CURRENT\COMMERCIAL CLIENTS\MICHAEL SNECKER\200203-CLV - OSO BLANCA & KYLE CANYON ENGINEERING\CIVIL DRAWINGS\IMPROVEMENT PLANS\200203-CLV\_C7-RCP-PP-DWG\_4/5/2023\_4:51:PM