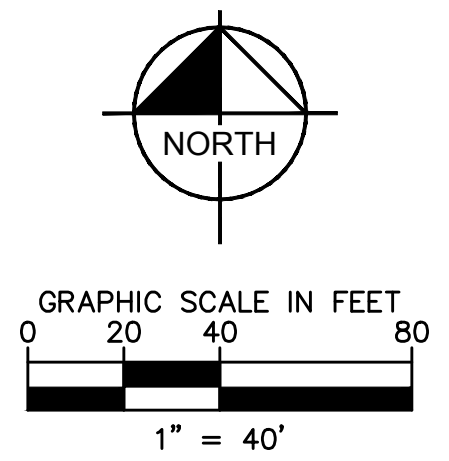
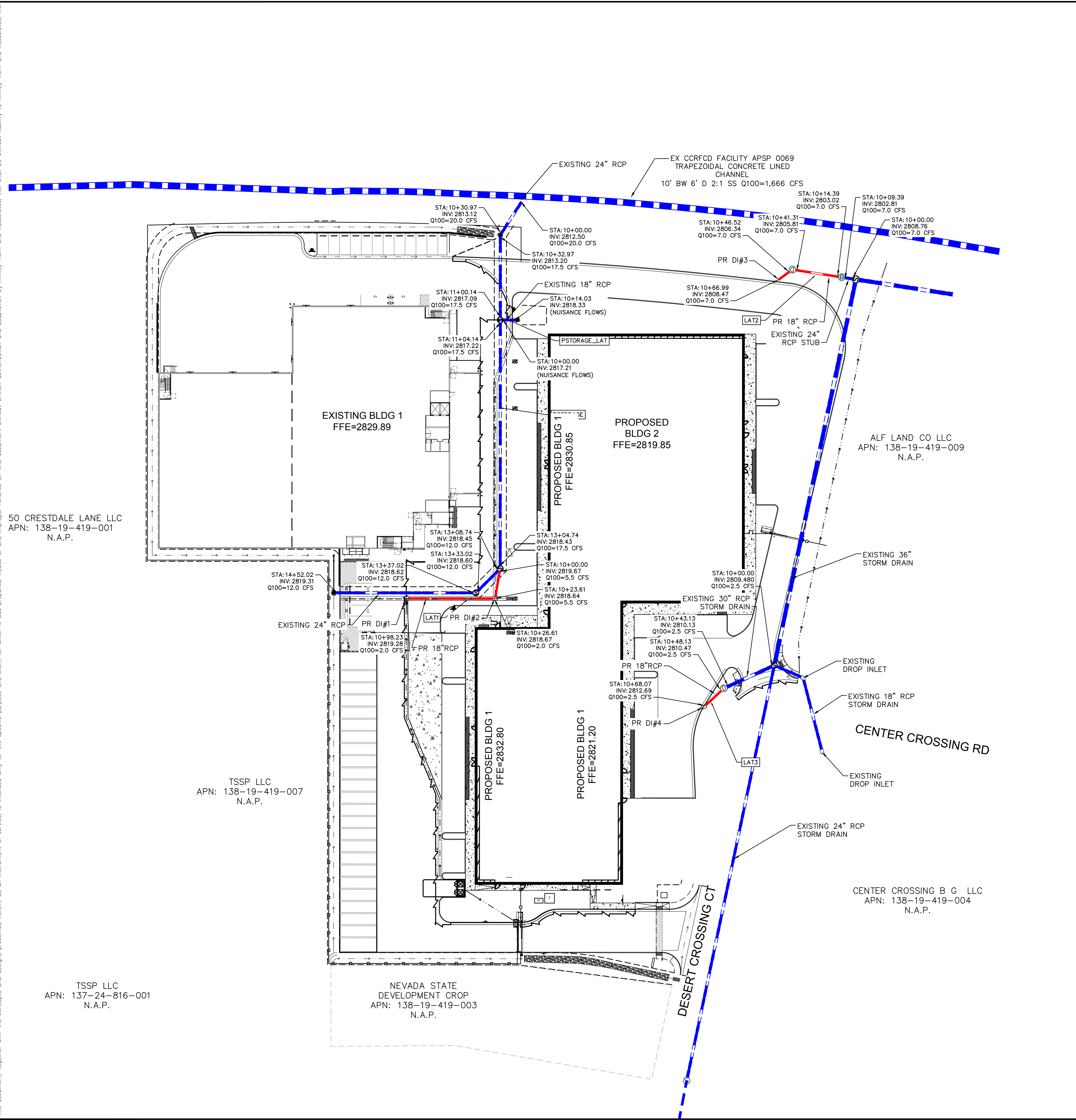


Plotted By: hurtado, Kevin. Sheet Set: kha. Layout: Map. March 28, 2023. 03:26:02pm. K:\AV_Civil\192189003 - Public Storage - Summerlin - Phase II\Reports\DRAINAGE\01_TDS\Figures\CAD\WSPG_UPDATE_recover.dwg
 This document, together with the concepts and designs presented herein, is intended only for the specific purpose and client for which it was prepared. Reuse of and improper reliance on this document without written authorization and adaptation by Kimley-Horn and Associates, Inc. shall be without liability to Kimley-Horn and Associates, Inc.



LEGEND

--- PROPOSED STORM DRAIN

--- EXISTING STORM DRAIN

PSTORAGE			
WSPG Station	Q ₁₀₀ (cfs)	WSPGW Depth (ft)	TRIBUTARY BASINS
10+00.00	20.0	2.82	ON1-A1 + ON1-A2 + ON1-C + ON1-D + ON1-E + ON1-F + *OF1 + B(2*)
10+30.97	20.0	2.44	
10+32.97	20.0	2.67	
11+00.14	17.5	1.28	ON1-A1 + ON1-A2 + *OF1 + B(2*)
11+04.14	17.5	1.51	
13+04.74	17.5	1.64	
13+08.74	12.0	2.14	B(2*) + OF1
13+33.02	12.0	2.07	
13+37.02	12.0	2.09	
14+52.02	12.0	1.63	

LAT1			
Station	Q ₁₀₀ (cfs)	WSPGW Depth (ft)	TRIBUTARY BASINS
10+00.00	5.5	2.15	DI#1 Bypass + ON1-B
10+23.61	5.5	2.01	
10+26.61	2.0	2.25	ON1-A1 + ON1-A2
10+98.23	2.0	1.67	

LAT2			
Station	Q ₁₀₀ (cfs)	WSPGW Depth (ft)	TRIBUTARY BASINS
10+00.00	7.0	4.72	ON3-A + ON3-B
10+09.39	7.0	4.68	
10+14.39	7.0	4.51	
10+41.31	7.0	0.52	
10+46.52	7.0	0.54	
10+66.99	7.0	1.02	

LAT2			
Station	Q ₁₀₀ (cfs)	WSPGW Depth (ft)	TRIBUTARY BASINS
10+00.00	2.5	3.50	ON2-A
10+43.13	2.5	2.86	
10+48.13	2.5	2.54	
10+68.07	2.5	0.60	

DROP INLET SUMMARY TABLE							
DROP INLET ID	TRIBUTARY BASINS	Q ₁₀₀	SLOPE	FLOW DEPTH	Q _{INT}	Q _{BYP}	DI TYPE
		(cfs)	(%)	(ft)	(cfs)	(cfs)	
DI#1	ON1-A1 + ON1-A2	3.5	1.90	0.15	2.0	1.5	4'X4' GRATE
DI#2	ON1-B + DI1 BYPASS	3.5	SUMP	0.36	3.5	0	3'X3' GRATE
DI#3	ON3-A + ON3-B	7.0	SUMP	0.50	7.0	0	5' TYPE DM2
DI#4	ON2-A	2.5	SUMP	0.50	2.5	0	5' TYPE DM2

50 CRESDALE LANE LLC
APN: 138-19-419-001
N.A.P.

TSSP LLC
APN: 138-19-419-007
N.A.P.

TSSP LLC
APN: 137-24-816-001
N.A.P.

NEVADA STATE
DEVELOPMENT CROP
APN: 138-19-419-003
N.A.P.

PROPOSED BLDG 2
FFE=2819.85

PROPOSED BLDG 1
FFE=2832.80

PROPOSED BLDG 1
FFE=2821.20

ALF LAND CO LLC
APN: 138-19-419-009
N.A.P.

CENTER CROSSING B G LLC
APN: 138-19-419-004
N.A.P.

<p>© 2023 KIMLEY-HORN AND ASSOCIATES, INC. 6671 LAS VEGAS BLVD. ST. SUITE 320, LAS VEGAS, NV 89119 PHONE: 702-882-9600 WWW.KIMLEY-HORN.COM</p>	<p>WSPG EXHIBIT</p>
<p>PUBLIC STORAGE AT SUMMERLIN PREPARED FOR PUBLIC STORAGE</p>	<p>NEVADA</p>
<p>WSPG</p>	<p>CITY OF LAS VEGAS</p>