

CONSTRUCTION NOTES:

- CONSTRUCT 3" OF AC PAVEMENT OVER 6" OF TYPE II AGGREGATE BASE (MAIN) PER DETAIL-1 ON SHEET C6.02
- CONSTRUCT 2" OF AC PAVEMENT OVER 6" OF TYPE II AGGREGATE BASE (PARKING) PER DETAIL-1 ON SHEET C6.02
- CONSTRUCT 5.5" OF AC PAVEMENT OVER 4" OF TYPE II AGGREGATE BASE OVER 5" OF TYPE-I AGGREGATE BASE (ARTERIAL) PER DETAIL-1 ON SHEET C6.02
- CONSTRUCT 3" OF AC PAVEMENT OVER 5" OF TYPE II AGGREGATE BASE (MINOR COLLECTOR) PER DETAIL-1 ON SHEET C6.02
- CONSTRUCT "L" TYPE CURB AND GUTTER PER CCAUSD NO. 216
- CONSTRUCT "A" CURB (6" CURB FACE) PER DETAIL-3, ON SHEET C6.02
- INSTALL PIPE BOLLARD PER DETAIL-4 ON SHEET C6.02
- CONSTRUCT CONCRETE SIDEWALK PER CCAUSD NO. 234
- CONSTRUCT CONCRETE WALKWAY PER DETAIL-2 ON SHEET C6.02
- CONSTRUCT 3" VALLEY GUTTER PER DETAIL-5 ON SHEET C6.02
- MATCH EXISTING GRADE
- CONSTRUCT COMMERCIAL DRIVEWAY PER CCAUSD NO. 225, 228 AND 222.1
- CONSTRUCT CURB OPENING, WIDTH PER PLAN. SEE DETAIL-7 ON SHEET C6.02
- CONSTRUCT "CASE-IN" CURB RAMP IN CURB RETURN PER CCAUSD NO. 235
- CONSTRUCT "CASE-IN" CURB RAMP IN CURB RETURN PER CCAUSD NO. 235
- CONSTRUCT SIDEWALK CURB RAMP IN PER DETAIL-8 ON SHEET C6.02
- CONSTRUCT SIDEWALK CURB RAMP IN PER DETAIL-9 ON SHEET C6.02
- CONSTRUCT DRAINAGE SWALE RIP RAP PER DETAIL-10 ON SHEET C6.02
- CONSTRUCT DECORATIVE PAVEMENT. SEE ARCHITECTURAL PLANS FOR DETAILS. PROPOSED DRIVEWAY APPROACHES IN THE R/W ARE NON-STANDARD IMPROVEMENTS AND ARE NOT MAINTAINED BY CLARK COUNTY PUBLIC WORKS
- CONSTRUCT CMU SCREEN WALL. BY OTHERS. SEE ARCHITECTURAL PLANS FOR DETAILS.
- CONSTRUCT BLOCK WALL OPENING PER DETAIL-6 ON SHEET C6.02
- INSTALL WROUGHT IRON FENCE. SEE ARCHITECTURAL PLANS FOR DETAILS.
- CONSTRUCT SIDEWALK DRAIN PER CCAUSD NO. 236
- CONSTRUCT TYPE-DM2 DROP INLET PER CCAUSD NO. 412.1 AND 421
- INSTALL GRACE MODEL BITUMENE SYSTEM 4000 DRAINAGE FLOOD PROTECTION AT 18" MINIMUM ABOVE ADJACENT FINISHED GRADE TO BUILDING. SYSTEM MUST INCLUDE FULL ASSEMBLY INCLUDING HYDROCUT 220 (OR EQUAL WATER PROOFING SYSTEM)
- CONSTRUCT RETAINING WALL PER SOUTHERN NEVADA BUILDING OFFICIALS REGIONAL STANDARDS NO. 8-100-2
- CONSTRUCT 6" HIGH WROUGHT IRON FENCE OPENING PER DETAIL-11, ON SHEET C6.02
- INSTALL 12" SDR-35 STORM DRAIN PIPE
- INSTALL NEEHAH TRENCH DRAIN WITH GRATE PER DETAIL-F ON SHEET C2.03
- SUMP PUMP SYSTEM PER SEPARATE PLANS (BY OTHERS)
- STORM DRAIN OUTLET THROUGH WALL
- PLAYGROUND STRUCTURE BY OTHERS.
- CONSTRUCT DRAINAGE SWALE PER DETAIL-1 ON SHEET C6.03
- CONSTRUCT TACK ON MEDIAN ISLAND PER DETAIL ON SHEET C6.03, W=4'
- SAWCUT, TRENCH, BACKFILL, AND RESTORE AC PAVEMENT PER CCAUSD 500.3, 503, AND 500.5
- SITE VISIBILITY PER CCAUSD #201.2. SEE DETAIL ON SHEET C4.00

CLARK COUNTY DEPARTMENT OF PUBLIC WORKS DEVELOPMENT REVIEW
ACCEPTANCE OF PLANS FOR FILING:
BY: _____ DATE: _____

GRADING PLAN CERTIFICATION
I CERTIFY THAT THE GRADING PLAN IS IN CONFORMANCE WITH THE APPROVED DRAINAGE STUDY: PW20-16017 ON FILE AT CLARK COUNTY FOR THE SUBJECT PROJECT.
JULIA L. IZZOLO PE #20326 DATE 5-27-22

EARTHWORKS
CUT: 6,820 CY
FILL: 980 CY
NET: 5,840 CY (CUT)

DISTURBED ACRES
ON-SITE: 4.29 ACRES
OFF-SITE: 0.56 ACRES

ASSESSOR'S PARCEL NUMBER
125-10-405-006, 125-10-405-007, 125-10-405-008

BENCHMARK
CITY OF LAS VEGAS BENCHMARK 69L09166
RIVET & PLATE TOP CURB W. SIDE CIMARRON RD. 1/4 MILE S. OF GRAND TETON DR.
ELEVATION=755.711 METERS=249.36 U.S. SURVEY FEET (NAVD88)

BASIS OF BEARING
THE BASIS OF BEARINGS FOR THIS SURVEY IS THE SOUTH LINE OF THE SOUTHWEST QUARTER OF SECTION 10, TOWNSHIP 19 SOUTH, RANGE 60 N.M.D.M., CLARK COUNTY, NEVADA WHICH BEARS NORTH 89°40'2" EAST, SHOWN AS THE CENTERLINE OF GRAND TETON DRIVE IN BOOK 147 OF PLATS, PAGE 82, CLARK COUNTY, NEVADA OFFICIAL RECORDS.

UTILITIES DISCLAIMER
EXISTING UTILITY LOCATIONS SHOWN ON THIS PLAN ARE APPROXIMATE ONLY. IT IS THE CONTRACTORS RESPONSIBILITY TO VERIFY THE VERTICAL AND HORIZONTAL LOCATION OF ALL EXISTING UNDERGROUND UTILITIES PRIOR TO COMMENCING CONSTRUCTION. NO REPRESENTATION IS MADE THAT ALL EXISTING UTILITIES ARE SHOWN HEREON. ZENITH ENGINEERING ASSUMES NO RESPONSIBILITY FOR UTILITIES NOT SHOWN OR UTILITIES NOT SHOWN IN THEIR PROPER LOCATION.

CLARK COUNTY STORM WATER MANAGEMENT NOTES

CLARK COUNTY DEPARTMENT OF PUBLIC WORKS DEVELOPMENT REVIEW

GRADING PLAN CERTIFICATION

EARTHWORKS

DISTURBED ACRES

ASSESSOR'S PARCEL NUMBER

BENCHMARK

BASIS OF BEARING

UTILITIES DISCLAIMER

DESIGNED BY: J. CARRERA
DRAWN BY: J. CARRERA
CHECKED BY: J. IZZOLO
HORIZ.: 1" = 30'
VERT.: NONE

FAST Call before you Dig
Call Before You Overhead

REVISION

NO.	DATE	DESCRIPTION
1	02/23/22	APPROVAL
2	02/23/22	REVISION
3	02/23/22	REVISION

JOB NO.: 191027
DATE: FEBRUARY, 2023
DRAWING NO.: C2.01
PW 21-20139

1980 FESTIVAL PLAZA DRIVE SUITE 450 LAS VEGAS, NV 89135 (702) 866-9535

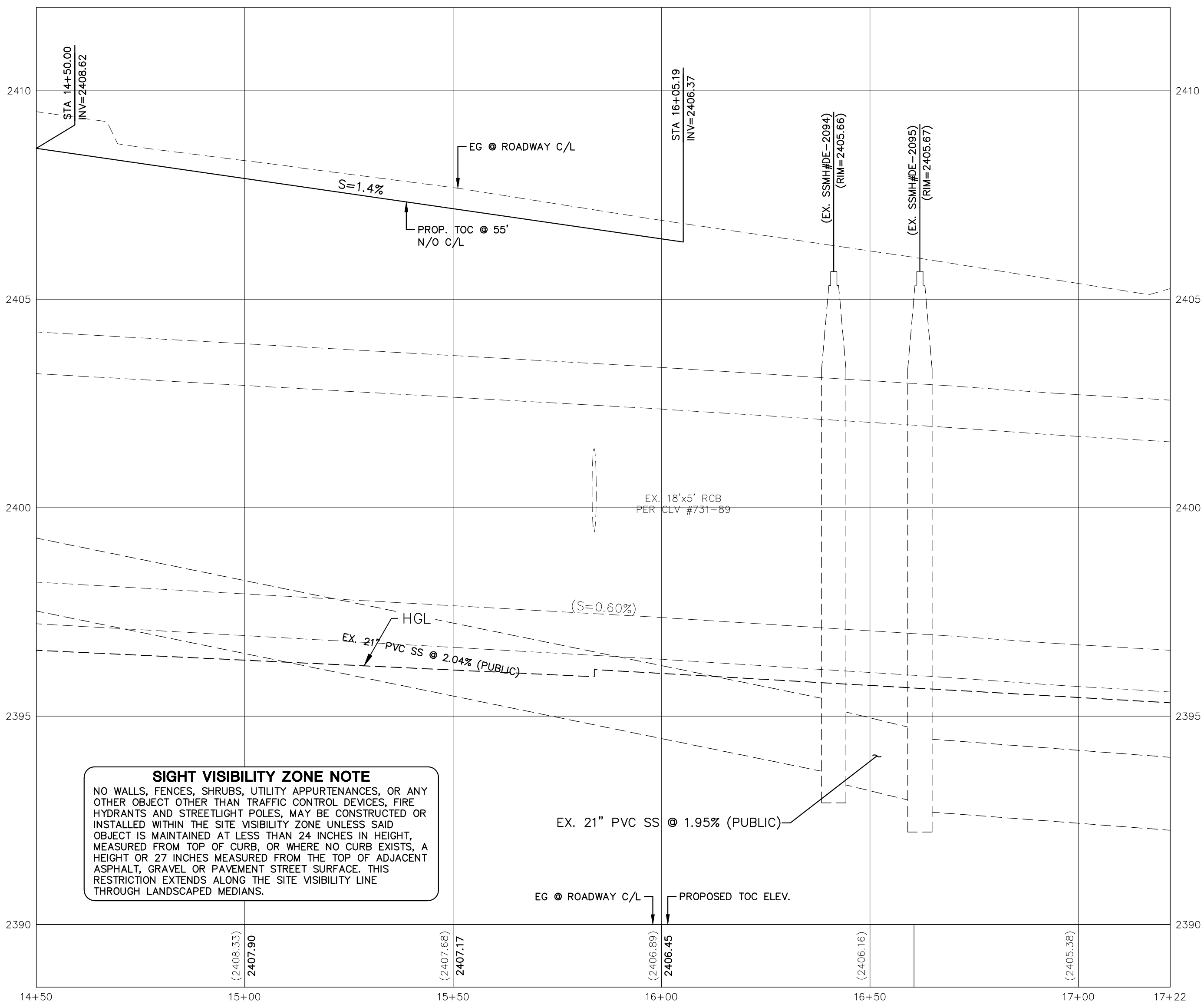
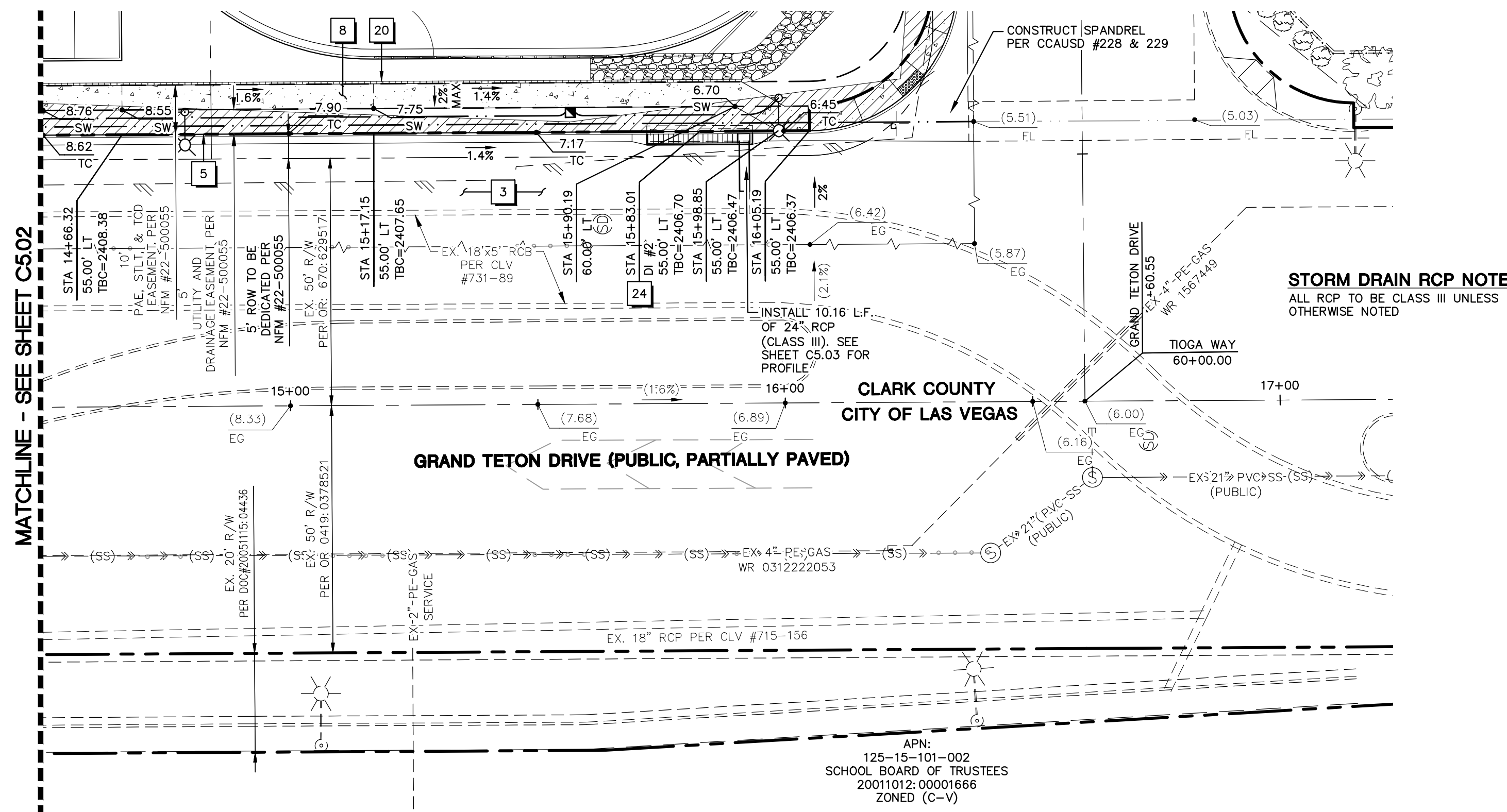
ZENITH ENGINEERING

CLARK COUNTY, NV

GRADING PLAN

5-27-22

L21-02390 CLV DWG #307V1269

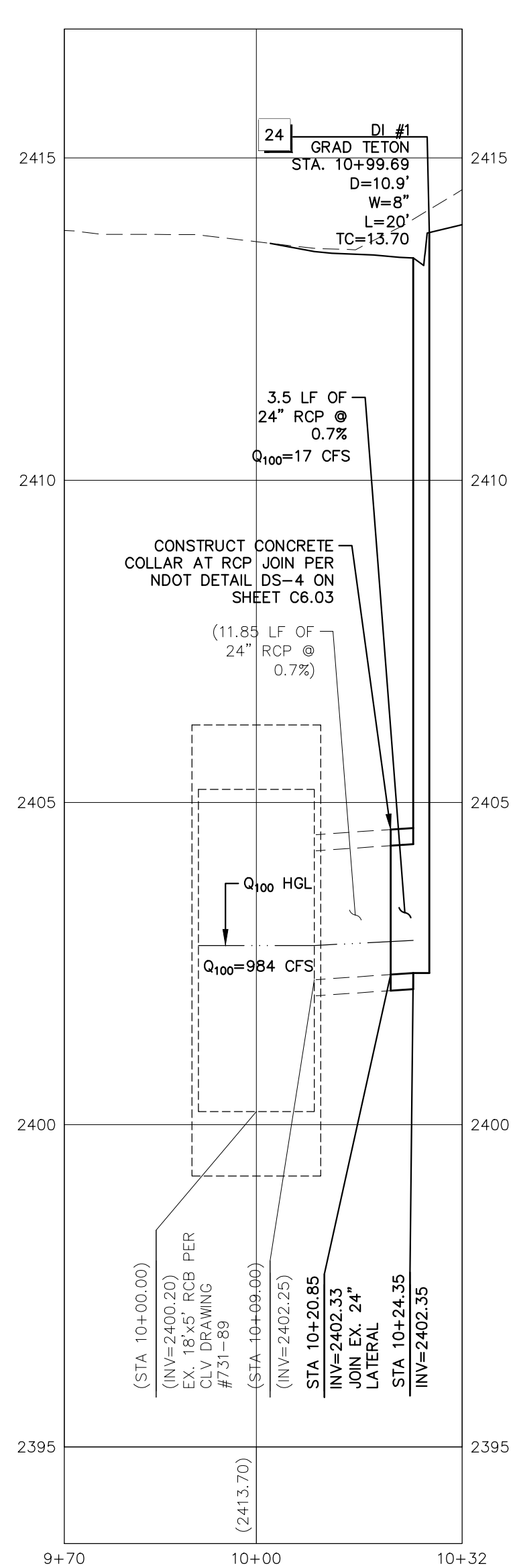


ASSESSOR'S PARCEL NUMBER
125-10-405-006, 125-10-405-007, 125-10-405-008

BENCHMARK
CITY OF LAS VEGAS BENCHMARK 6LV9016N6
RIVET & PLATE TOP CURB W. SIDE CIMARRON RD. 1/4 MILE S. OF GRAND TETON DR.
ELEVATION=755.711 METERS=2479.36 U.S. SURVEY FEET (NAVD88)

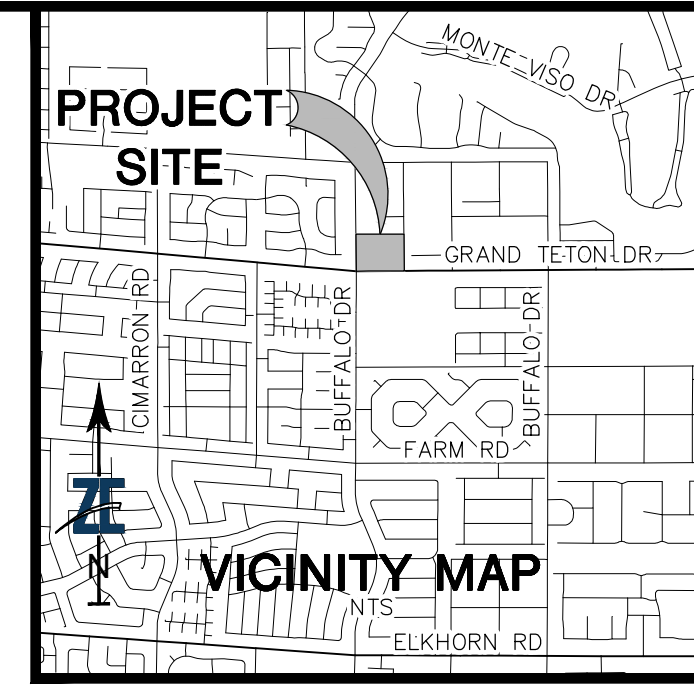
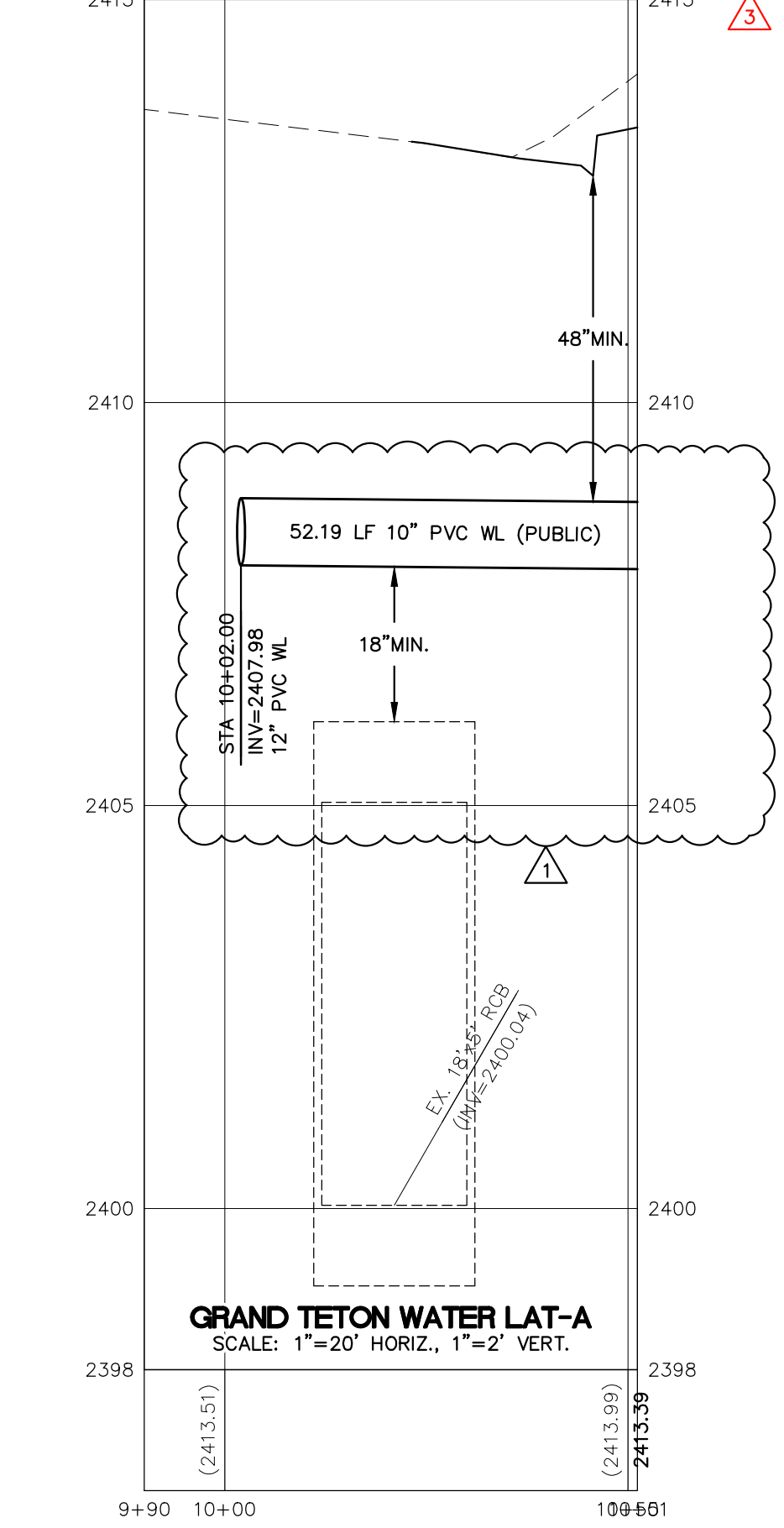
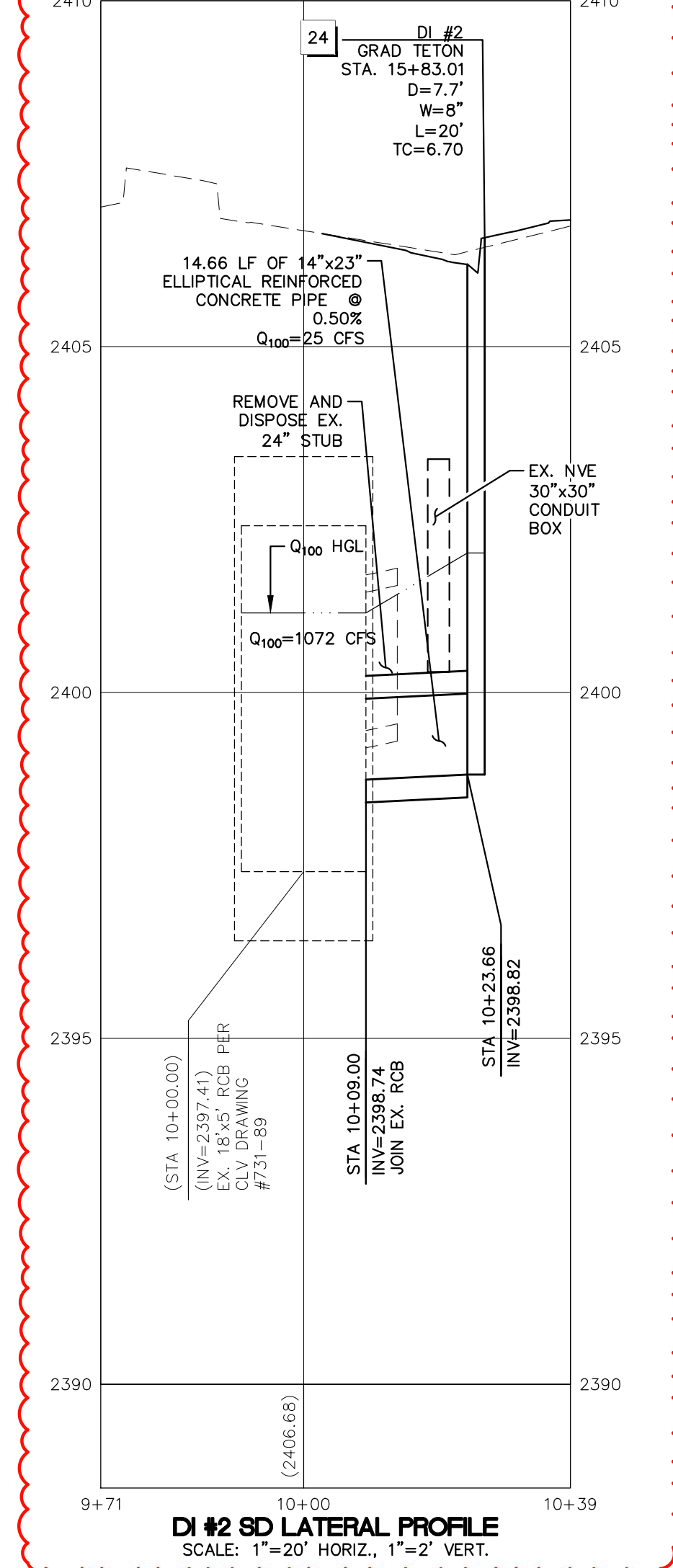
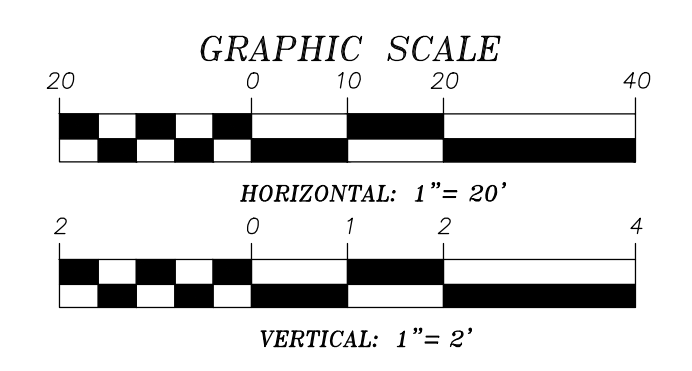
BASIS OF BEARING
THE BASIS OF BEARINGS FOR THIS SURVEY IS THE SOUTH LINE OF THE SOUTHWEST QUARTER OF SECTION 10, TOWNSHIP 19 SOUTH, RANGE 60 M.D.M., CLARK COUNTY, NEVADA WHICH BEARS NORTH 89°40'02" EAST, SHOWN AS THE CENTERLINE OF GRAND TETON DRIVE IN BOOK 147 OF PLATS, PAGE 82, CLARK COUNTY, NEVADA OFFICIAL RECORDS.

UTILITIES DISCLAIMER
EXISTING UTILITY LOCATIONS SHOWN ON THIS PLAN ARE APPROXIMATE ONLY. IT IS THE CONTRACTOR'S RESPONSIBILITY TO VERIFY THE VERTICAL AND HORIZONTAL LOCATION OF ALL EXISTING UNDERGROUND UTILITIES PRIOR TO COMMENCING CONSTRUCTION. NO REPRESENTATION IS MADE THAT ALL EXISTING UTILITIES ARE SHOWN HEREON. ZENITH ENGINEERING ASSUMES NO RESPONSIBILITY FOR UTILITIES NOT SHOWN OR UTILITIES NOT SHOWN IN THEIR PROPER LOCATION.



APPROVED FOR CONSTRUCTION

LAS VEGAS VALLEY WATER DISTRICT PLANNING & ENGINEERING SERVICES
PROJECT NO. 139692 FIRST APPROVED DATE



CONSTRUCTION NOTES:

- CONSTRUCT 3" OF AC PAVEMENT OVER 6" OF TYPE II AGGREGATE BASE (MAIN) PER DETAIL-1 ON SHEET C6.02
- CONSTRUCT 2" OF AC PAVEMENT OVER 6" OF TYPE II AGGREGATE BASE (PARKING) PER DETAIL-1 ON SHEET C6.02
- CONSTRUCT 5.5" OF AC PAVEMENT OVER 4" OF TYPE II AGGREGATE BASE (ARTERIAL) PER DETAIL-1 ON SHEET C6.02
- CONSTRUCT 3" OF AC PAVEMENT OVER 5" OF TYPE II AGGREGATE BASE (MINOR COLLECTOR) PER DETAIL-1 ON SHEET C6.02
- CONSTRUCT "L" TYPE CURB AND GUTTER PER CCAUSD NO. 216
- CONSTRUCT "A" CURB (6" CURB FACE) PER DETAIL-3, ON SHEET C6.02
- INSTALL PIPE BOLLARD PER DETAIL-4 ON SHEET C6.02
- CONSTRUCT CONCRETE SIDEWALK PER CCAUSD NO. 234
- CONSTRUCT CONCRETE WALKWAY PER DETAIL-2 ON SHEET C6.02
- CONSTRUCT 3" VALLEY GUTTER PER DETAIL-5 ON SHEET C6.02
- MATCH EXISTING GRADE
- CONSTRUCT COMMERCIAL DRIVEWAY PER CCAUSD NO. 225, 228 AND 222.1
- CONSTRUCT CURB OPENING, WIDTH PER PLAN. SEE DETAIL-7 ON SHEET C6.02
- CONSTRUCT "CASE-II" CURB RAMP IN CURB RETURN PER CCAUSD NO. 235
- CONSTRUCT "CASE-I" CURB RAMP IN CURB RETURN PER CCAUSD NO. 235
- CONSTRUCT SIDEWALK CURB RAMP IN PER DETAIL-8 ON SHEET C6.02
- CONSTRUCT SIDEWALK CURB RAMP IN PER DETAIL-9 ON SHEET C6.02
- CONSTRUCT DRAINAGE SWALE RIP RAP PER DETAIL-10 ON SHEET C6.02
- CONSTRUCT DECORATIVE PAVEMENT. SEE ARCHITECTURAL PLANS FOR DETAILS. PROPOSED DRIVEWAY APPROACHES IN THE R/W ARE NON-STANDARD IMPROVEMENTS AND ARE NOT MAINTAINED BY CLARK COUNTY PUBLIC WORKS
- CONSTRUCT CMU SCREEN WALL, BY OTHERS. SEE ARCHITECTURAL PLANS FOR DETAILS.
- CONSTRUCT BLOCK WALL OPENING PER DETAIL-6 ON SHEET C6.02
- INSTALL WROUGHT IRON FENCE. SEE ARCHITECTURAL PLANS FOR DETAILS.
- CONSTRUCT SIDEWALK DRAIN PER CCAUSD NO. 236
- CONSTRUCT TYPE-DM2 DROP INLET PER CCAUSD NO. 412.1 AND 421
- INSTALL GRACE MODEL BITUTHENE SYSTEM 4000 DRAINAGE FLOOD PROTECTION AT 18" MINIMUM ABOVE ADJACENT FINISHED GRADE TO BUILDING. SYSTEM MUST INCLUDE FULL ASSEMBLY INCLUDING HYDROCUT 220 (OR EQUAL WATER PROOFING SYSTEM)
- CONSTRUCT RETAINING WALL PER SOUTHERN NEVADA BUILDING OFFICIALS REGIONAL STANDARDS NO. B-100-2
- CONSTRUCT 6" HIGH WROUGHT IRON FENCE OPENING PER DETAIL-11, ON SHEET C6.02
- INSTALL 12" SDR-35 STORM DRAIN PIPE
- INSTALL NEENAH TRENCH DRAIN WITH GRATE PER DETAIL-F ON SHEET C2.03
- SUMP PUMP SYSTEM PER SEPARATE PLANS (BY OTHERS)
- STORM DRAIN OUTLET THROUGH WALL
- PLAYGROUND STRUCTURE BY OTHERS.
- CONSTRUCT DRAINAGE SWALE PER DETAIL-1 ON SHEET C6.03
- CONSTRUCT TACK ON MEDIAN ISLAND PER DETAIL ON SHEET C6.03, W=4'
- SAWCUT, TRENCH, BACKFILL, AND RESTORE AC PAVEMENT PER CCAUSD 500.3, 503, AND 500.5
- SITE VISIBILITY PER CCAUSD #201.2. SEE DETAIL ON SHEET C4.00

ZENITH ENGINEERING
1980 FESTIVAL PLAZA DRIVE SUITE 450 LAS VEGAS, NV 89135 (702) 866-9535

DESIGNED BY: J. IZZOLO
DRAWN BY: D. JOHNSON
CHECKED BY: J. IZZOLO
HORIZ. AS SHOWN
VERT. AS SHOWN

APPROVED FOR CONSTRUCTION
JULIA L. IZZOLO
CIVIL
#20326

FAST
Call before you Dig
1-702-432-5300

Call Before You Dig
1-800-642-2444
1-702-227-2929

REVISION

REV.	DESCRIPTION	DATE	APPROVAL
1	REVISED WL VERT. & HORIZ. ALIGNMENT PER FIELD CONDITIONS	J.C. 1/27/23	
2	REV. DIR. PIPE TYPE & LENGTH DUE TO WVE CONDUIT CONTACT	J.C. 02/02/23	

PROJECT
BUFFALO AND GRAND TETON DRIVE
CLARK COUNTY, NV

GRAND TETON DRIVE PLAN AND PROFILE
FROM STA 14+50 TO 17+22

DRAWING NO. C5.03
DATE: FEBRUARY, 2023
JOB NO: 191027
SCALE: 1/4"=1'-0"