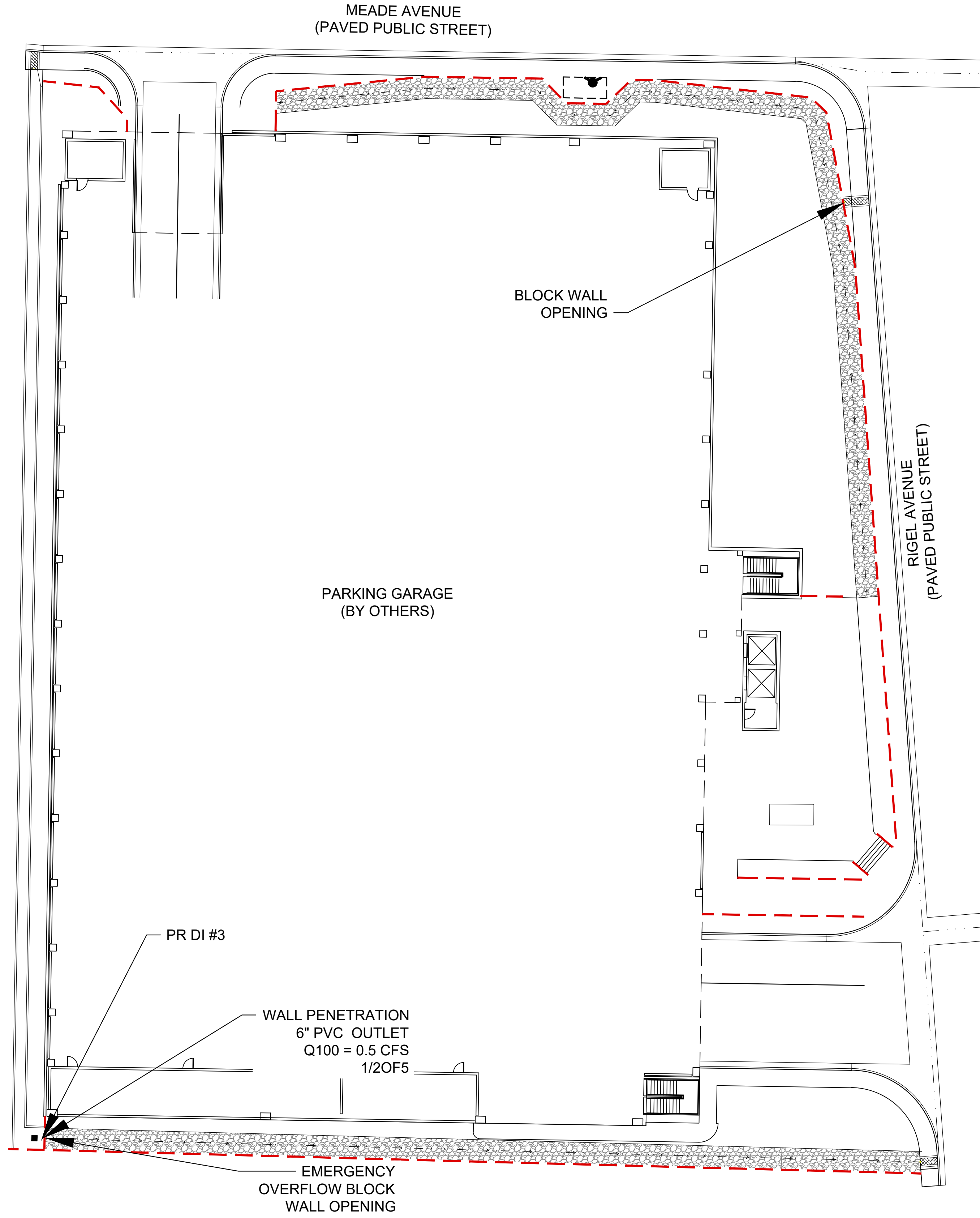
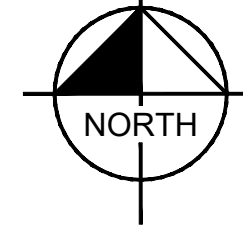
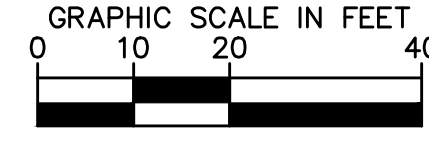


Plotted By: Schaefer, Sean Sheet: Set: KHA Layout: FAC-2 February 21, 2023 12:50:20pm K:\AV\_Civil\022965012 - Area 15 District 2 (Fiber Brothers)\Reports\RAINAGE\03\_ADD2\Figures\Facility Map\_ADD2.dwg  
 This document, together with the concepts and designs presented herein, is intended only for the specific purpose and client for which it was prepared. Reuse or improper reliance on this document without written authorization and adaptation by Kimley-Horn and Associates, Inc. shall be without liability to Kimley-Horn and Associates, Inc.

VIEWPORT 3



DROP INLET SUMMARY TABLE							
DROP INLET ID	Tributary Basins	Q <sub>100</sub>	SLOPE	FLOW DEPTH	Q <sub>INT</sub>	Q <sub>STP</sub>	DI TYPE
		(cfs)	(%)	(ft)	(cfs)	(cfs)	
DI#1	ONE1	1.0	SUMP	0.20	1.0	0.0	JENSEN DI2'X2'
DI#2	ONE1	1.0	SUMP	0.20	1.0	0.0	JENSEN DI2'X2'
DI#3	1/2OF5	0.5	SUMP	0.13	0.5	0.0	JENSEN DI2'X2'

LEGEND

- PROPOSED ONSITE TRENCH DRAIN
- PROPOSED TRENCH DRAIN FLOW DIRECTION
- PROPOSED STORM DRAIN AND FLOW DIRECTION
- - - PROPOSED WALL

<b>AREA 15 DISTRICT 2</b> PREPARED FOR <b>NEW VEGAS HOLDING COMPANY, LLC</b> <small>CITY OF LAS VEGAS NEVADA</small>	<b>PARKING GARAGE FACILITY MAP</b>		<small>KHA PROJECT</small> 092965011 <small>DATE</small> 01/05/2023 <small>SCALE</small> AS SHOWN <small>DESIGNED BY</small> TEA <small>DRAWN BY</small> SS <small>CHECKED BY</small> RD	01/05/2023
			<small>© 2023 KIMLEY-HORN AND ASSOCIATES, INC.          6671 LAS VEGAS BOULEVARD S., SUITE 320, LAS VEGAS, NV 89119          PHONE: 702-862-3600          WWW.KIMLEY-HORN.COM</small>	
FAC-2	No.	REVISIONS	DATE	BY