

STORMWATER MANAGEMENT NOTES:

1. THE OWNER, SITE DEVELOPER, CONTRACTOR, AND/OR THEIR AUTHORIZED AGENTS SHALL EACH DAY REMOVE ALL SEDIMENT, MUD, CONSTRUCTION DEBRIS, OR OTHER POTENTIAL POLLUTANTS THAT MAY HAVE BEEN DISCHARGED TO, OR ACCUMULATED IN, THE PUBLIC RIGHTS OF WAY OF CLARK COUNTY AS A RESULT OF CONSTRUCTION ACTIVITIES ASSOCIATED WITH THIS SITE DEVELOPMENT OR CONSTRUCTION PROJECT. SUCH MATERIALS SHALL BE PREVENTED FROM ENTERING THE STORM SEWER SYSTEM.
2. ADDITIONAL CONSTRUCTION SITE DISCHARGE BEST MANAGEMENT PRACTICES MAY BE REQUIRED OF THE OWNER AND HIS OR HER AGENTS DUE TO UNFORESEEN EROSION PROBLEMS OR IF THE SUBMITTED PLAN DOES NOT MEET THE PERFORMANCE STANDARDS SPECIFIED IN CLARK COUNTY AND THE LAS VEGAS VALLEY CONSTRUCTION SITE BMP GUIDANCE MANUAL.
3. TEMPORARY OR PERMANENT STABILIZATION PRACTICES WILL BE INSTALLED ON DISTURBED AREAS AS SOON AS PRACTICABLE AND NO LATER THAN 14 DAYS AFTER THE CONSTRUCTION ACTIVITY IN THAT PORTION OF THE SITE HAS TEMPORARILY OR PERMANENTLY CEASED. SOME EXCEPTIONS MAY APPLY. REFER TO THE NEVADA STORMWATER GENERAL PERMIT FOR CONSTRUCTION ACTIVITY NVR100000, SITE STABILIZATION REQUIREMENTS, SCHEDULES, AND DEADLINES.
4. AT A MINIMUM, THE CONTRACTOR OR HIS AGENT SHALL INSPECT ALL DISTURBED AREAS, AREAS USED FOR STORAGE OF MATERIALS AND EQUIPMENT THAT ARE EXPOSED TO PRECIPITATION, WINDLE ENTRANCE AND EXIT LOCATIONS, AND ALL BMPs WEEKLY, AND WITHIN 24 HOURS AFTER ANY RAIN EVENT OF 0.5 INCHES OR MORE. THE CONTRACTOR OR HIS AGENT SHALL UPDATE OR MODIFY THE STORMWATER POLLUTION PREVENTION PLAN AS NECESSARY. SOME EXCEPTIONS TO WEEKLY INSPECTIONS MAY APPLY, SUCH AS SUSPENSION OF LAND DISTURBANCE ACTIVITIES. REFER TO THE NEVADA STORMWATER GENERAL PERMIT FOR CONSTRUCTION ACTIVITY NVR100000, INSPECTIONS SECTION.
5. ACCUMULATED SEDIMENT IN BMPs SHALL BE REMOVED WITHIN SEVEN DAYS AFTER A STORMWATER RUNOFF EVENT OR PRIOR TO THE NEXT ANTICIPATED STORM EVENT, WHICHEVER IS EARLIER. SEDIMENT MUST BE REMOVED WHEN BMP DESIGN CAPACITY HAS BEEN REDUCED BY 50 PERCENT OR MORE.
6. AT A MINIMUM, THE CONTRACTOR OR HIS AGENT SHALL RESPOND TO STORMWATER INSPECTION CORRECTIVE ACTIONS IN THE MANNER PRESCRIBED BY CLARK COUNTY, INCLUDING BUT NOT LIMITED TO PROVIDING PHOTOS AND DESCRIPTIONS OF THE CORRECTIONS COMPLETED BY THE CONTRACTOR OR HIS AGENT.

GRADING NOTES:

1. SLOPES 4:1 OR STEEPER AND FINE-GRAINED MATERIALS THAT HAVE BEEN DISTURBED (SANDY AND SILTY MATERIALS) SHOULD BE PROTECTED WITH BURLAP OR OTHER EROSION CONTROL FABRIC/MATERIAL, UNLESS OTHERWISE SPECIFIED BY LANDSCAPE DRAWINGS AND SPECIFICATIONS OR THE SOILS REPORT.
2. CONTRACTOR SHALL DETERMINE HIS OWN FOOTING OR BASEMENT EXCAVATION QUANTITIES, EVEN THOUGH SHOWN ON GRADING PLANS. ADDITIONALLY, STRUCTURE BACKFILL COSTS SHOULD BE INCLUDED IN THE COST OF THE STRUCTURE, UNLESS OTHERWISE SPECIFIED IN THE CONTRACT DOCUMENTS.
3. CONTRACTOR SHALL NOTIFY LOCHSA ENGINEERING WITHIN 24 HOURS OF OMISSIONS AND ERRORS DISCOVERED ON PLANS. LOCHSA ENGINEERING WILL NOT BE RESPONSIBLE FOR ANY "CORRECTIVE" WORK DONE BY OTHERS.
4. CONTRACTOR TO ENSURE POSITIVE DRAINAGE. NO PONDING ALLOWED.

SPECIAL NOTE TO CONTRACTOR:

EXISTING IRRIGATION, LANDSCAPING, ELECTRICAL LIGHTING, SIGNAGE AND OTHER EXISTING IMPROVEMENTS MAY BE IMPACTED BY PROPOSED CONSTRUCTION. PRIOR TO START OF CONSTRUCTION, CONTRACTOR SHALL VERIFY ALL EXISTING IMPROVEMENTS AND IDENTIFY CONFLICTS. CONTRACTOR SHALL COORDINATE WITH SITE FACILITIES AND ENGINEERING STAFF TO REMOVE AND/OR RELOCATE ANY AND ALL IMPROVEMENTS IN CONFLICT.

ADJUSTMENT, RELOCATION & RESTORATION NOTE:

CONTRACTOR IS RESPONSIBLE TO RESTORE / REPLACE SURFACE IMPROVEMENTS AS NECESSARY TO PROVIDE SURFACING CONSISTENT WITH EXISTING AND ADJACENT IMPROVEMENTS IN ALL AREAS IN WHICH EXISTING IMPROVEMENTS REQUIRE ADJUSTMENT, RELOCATION, RESTORATION OR REMOVAL (INCLUDING, BUT NOT LIMITED TO, THE POSSIBLE RELOCATION OF PLANTERS, LIGHTING IMPROVEMENTS, COMMUNICATIONS, SANITARY SEWER CLEAN-OUTS, DRAINS, WATER IMPROVEMENTS, ETC.). CONTRACTOR SHALL BE RESPONSIBLE TO RESTORE AND TO PROVIDE CONTINUED SERVICE TO ALL IMPACTED IMPROVEMENTS. CONTRACTOR IS RESPONSIBLE TO INVESTIGATE SITE CONDITIONS PRIOR TO BIDDING TO IDENTIFY AND QUANTIFY ANY CONCERNS ASSOCIATED WITH THE RELOCATION OF IMPROVEMENTS.

GEOTECHNICAL:

ALL GRADING SHALL BE PERFORMED IN COMPLIANCE WITH THE SOILS REPORT PREPARED BY:

FLOOD ZONE NOTE:

THE PROJECT SITE IS COVERED BY FLOOD INSURANCE RATE MAP (FIRM) FOR THE CLARK COUNTY, NEVADA, AND INCORPORATED AREAS, COMMUNITY PANEL NUMBER 320302170F, EFFECTIVE DATE: NOVEMBER 16, 2011. THE PROJECT SITE IS LOCATED WITHIN A FEMA ZONE X (UN-SHADED) DEFINED AS: "AREAS DETERMINED TO BE OUTSIDE THE 0.2% ANNUAL CHANCE FLOODPLAIN."

EXISTING UTILITY NOTE:

CONTRACTOR TO ADJUST ALL EXISTING UTILITIES TO MATCH PROPOSED FINISH GRADE ELEVATIONS.

NOTE:

ENCROACHING PATIO/BALCONY/STAIRS/RAMPS WITHIN PUBLIC ROW COULD BE REMOVED IN THE FUTURE WITHOUT ADVERSE EFFECT TO THE STRUCTURAL INTEGRITY OF THE BUILDING.

ADD 1700 FEET TO ALL ELEVATIONS ON PLAN

CONTRACTOR SHALL CALL UNDERGROUND SERVICES ALERT AT 811 PRIOR TO DIGGING AT LEAST 48 HOURS PRIOR TO ANY CONSTRUCTION.

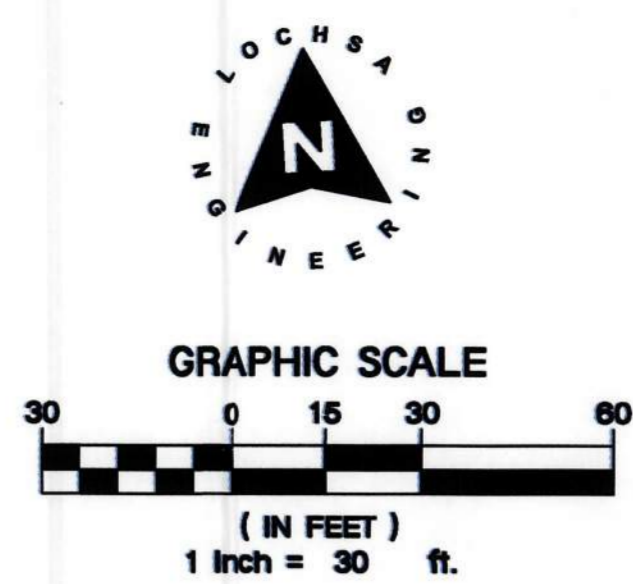
EXISTING UTILITY NOTE:

CONTRACTOR TO ADJUST ALL EXISTING UTILITIES TO MATCH PROPOSED FINISH GRADE ELEVATIONS.

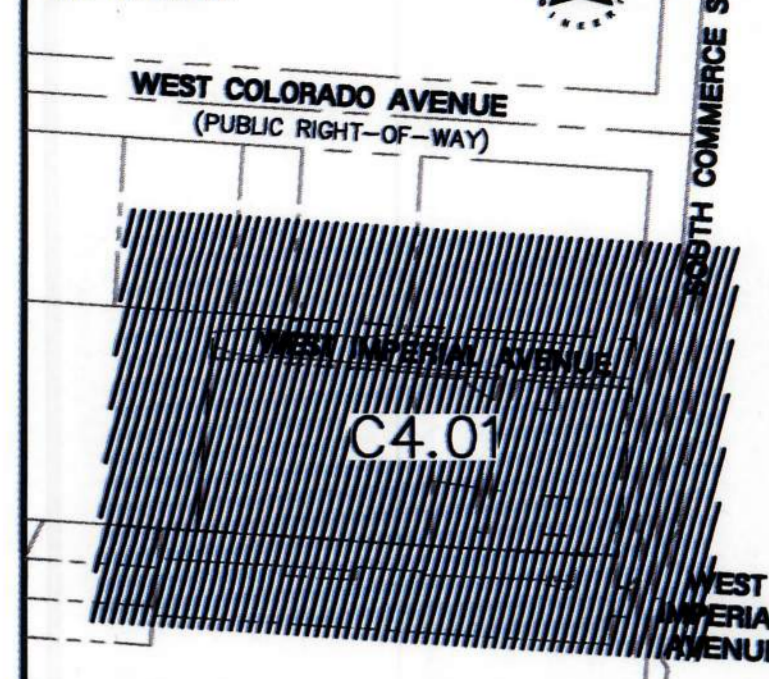
MAX 2% H.S.
MIN. 6% L.S.

TYPICAL GRADING IN LANDSCAPE AREAS AWAY FROM BUILDING

NOTE: CUT/FILL QUANTITIES ARE TO FINISHED GRADE & DO NOT INCLUDE MATERIAL THICKNESS'S, FOOTINGS, ETC.



KEY MAP
NOT TO SCALE



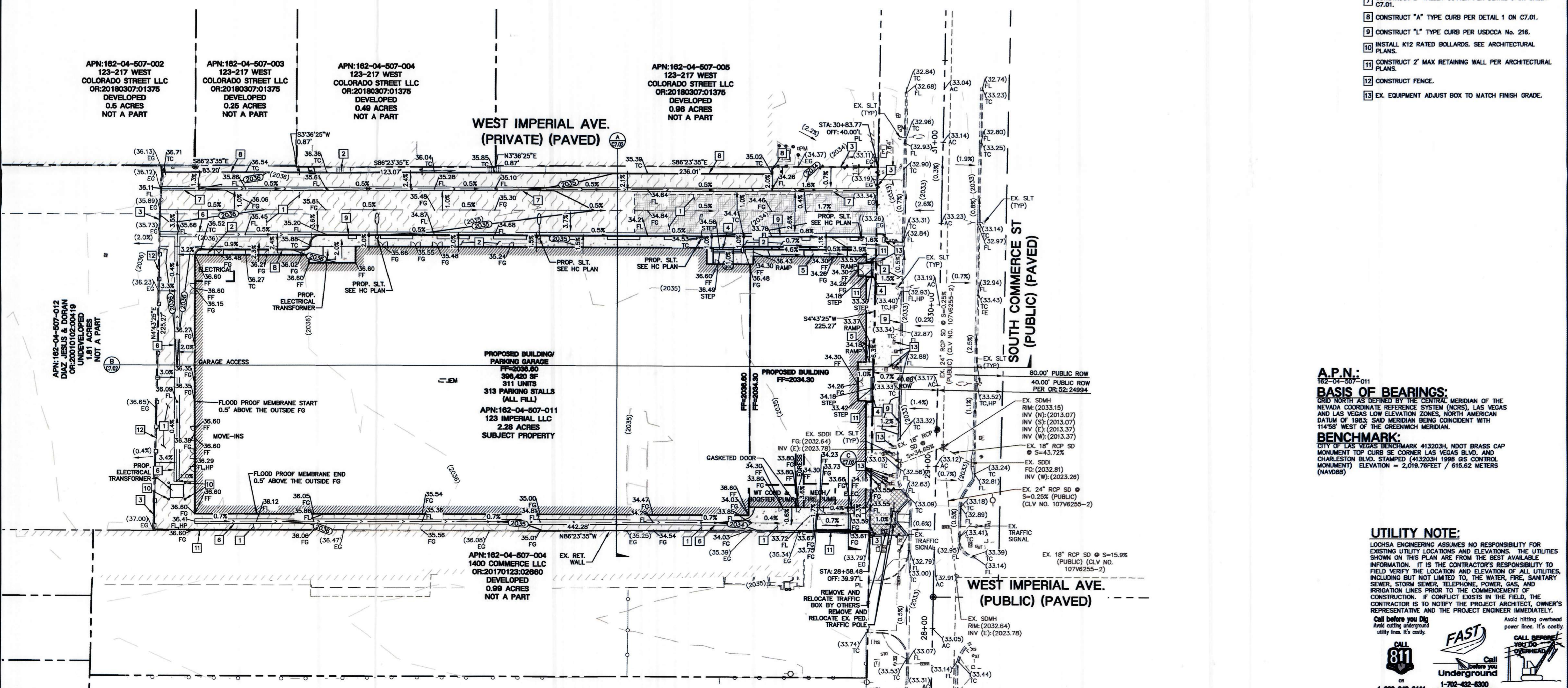
DESIGN DEVELOPMENT
01/12/2023

CONSTRUCTION NOTES:

- ALL CONSTRUCTION TO BE DONE IN ACCORDANCE WITH "CLARK COUNTY AREA UNIFORM STANDARD DRAWINGS (C.C.A.U.S.D.)" LATEST EDITION AND/OR REGULATING ENTITY HAVING JURISDICTION.
- NOT ALL NOTES USED ON THIS SHEET -
- 1) CONSTRUCT AC PAVEMENT PER DETAIL 4 ON C7.01.
- 2) CONSTRUCT CONC. SIDEWALK PER USDOCA No. 234.
- 3) SAWCUT AND MATCH EXISTING.
- 4) EXTERIOR CONCRETE STEPS PER DETAIL 2 ON C7.01.
- 5) INSTALL ON-SITE RAMP PER USDOCA No. 235.
- 6) CONSTRUCT 3" VALLEY GUTTER PER DETAIL 6 ON SHEET C7.01.
- 7) CONSTRUCT 2" VALLEY GUTTER PER DETAIL 6 ON SHEET C7.01.
- 8) CONSTRUCT "A" TYPE CURB PER DETAIL 1 ON C7.01.
- 9) CONSTRUCT "L" TYPE CURB PER USDOCA No. 216.
- 10) INSTALL K12 RATED BOLLARDS. SEE ARCHITECTURAL PLANS.
- 11) CONSTRUCT 2' MAX RETAINING WALL PER ARCHITECTURAL PLANS.
- 12) CONSTRUCT FENCE.
- 13) EX. EQUIPMENT ADJUST BOX TO MATCH FINISH GRADE.

GRADING PLAN CERTIFICATION

NAME: GUY M. MORRIS PE #14526 DATE: _____
 CERTIFY THAT THIS GRADING PLAN IS IN CONFORMANCE WITH APPROVED DRAINAGE STUDY DS#630 FOR THIS SITE ON FILE AT CITY OF LAS VEGAS FOR THIS PROJECT.



A.P.N.:
182-04-507-011
BASIS OF BEARINGS:
GRID NORTH AS DEFINED BY THE CENTRAL MERIDIAN OF THE NEVADA COORDINATE REFERENCE SYSTEM (NCRS), LAS VEGAS AND LAS VEGAS LOW ELEVATION ZONES, NORTH AMERICAN DATUM OF 1983; SAID MERIDIAN BEING CONTROLLED WITH 114°58' WEST OF THE GREENWICH MERIDIAN.
BENCHMARK:
CITY OF LAS VEGAS BENCHMARK 4132034, NDOT BRASS CAP MONUMENT TOP CURB SE CORNER LAS VEGAS BLVD. AND CHARLESTON BLVD. STAMPED (4132034) 1998 G&S CONTROL MONUMENT) ELEVATION = 2,019.76FEET / 615.62 METERS (NAVD88)

UTILITY NOTE:
LOCHSA ENGINEERING ASSUMES NO RESPONSIBILITY FOR EXISTING UTILITY LOCATIONS AND ELEVATIONS. THE UTILITIES SHOWN ON THIS PLAN ARE FROM THE BEST AVAILABLE INFORMATION. IT IS THE CONTRACTOR'S RESPONSIBILITY TO FIELD VERIFY THE LOCATION AND ELEVATION OF ALL UTILITIES, INCLUDING BUT NOT LIMITED TO, THE WATER, FIRE, SANITARY SEWER, STORM SEWER, TELEPHONE, POWER, GAS, AND IRRIGATION LINES PRIOR TO THE COMMENCEMENT OF CONSTRUCTION. IF CONFLICT EXISTS IN THE FIELD, THE CONTRACTOR IS TO NOTIFY THE PROJECT ARCHITECT, OWNER'S REPRESENTATIVE AND THE PROJECT ENGINEER IMMEDIATELY.

Call before you Dig
Avoid calling underground utility lines. It's costly.

FAST
Call before you Dig
Underground

1-800-842-2444
1-702-432-6300
FIREMAY & METCALE SYSTEM

CL OR SURVEY LINE	EASEMENT LINE	DESCRIPTION:	BUILDING OUTLINE	EDGE OF PAVEMENT	"A" TYPE CURBS	"L" TYPE CURBS	WALLS	CONTOUR LINES	AC PAVEMENT	CONCRETE	SPOT ELEVATIONS	SIGNS	MANHOLE W/ DESCRIPTION	MANHOLE DESCRIPTIONS	FIRE HYDRANTS	GATE VALVES	REDUCERS	CLEAN OUTS	UTILITY BOX OR VAULT	60" ROW LED STREETLIGHTS	80" ROW LED STREETLIGHTS	100" ROW LED STREETLIGHTS	INTERSECTION STREETLIGHTS
PROPERTY LINE	SAWCUT LINE	EXISTING:						(2210)			(12.34)		⊙	⊙ = SANITARY SEWER ⊙ = STORM DRAIN ⊙ = ELECTRICAL ⊙ = TELEPHONE	⊙	▶	○	□	○	○	○	○	
ROW LINE	SCARP LINE	PROPOSED:																					

6046 South Jones Blvd
 Suite 300
 Las Vegas, NV 89118
 Phone: (702) 946-8912
 Fax: (702) 946-8917
 www.lochsa.com

Lochsa
Engineering

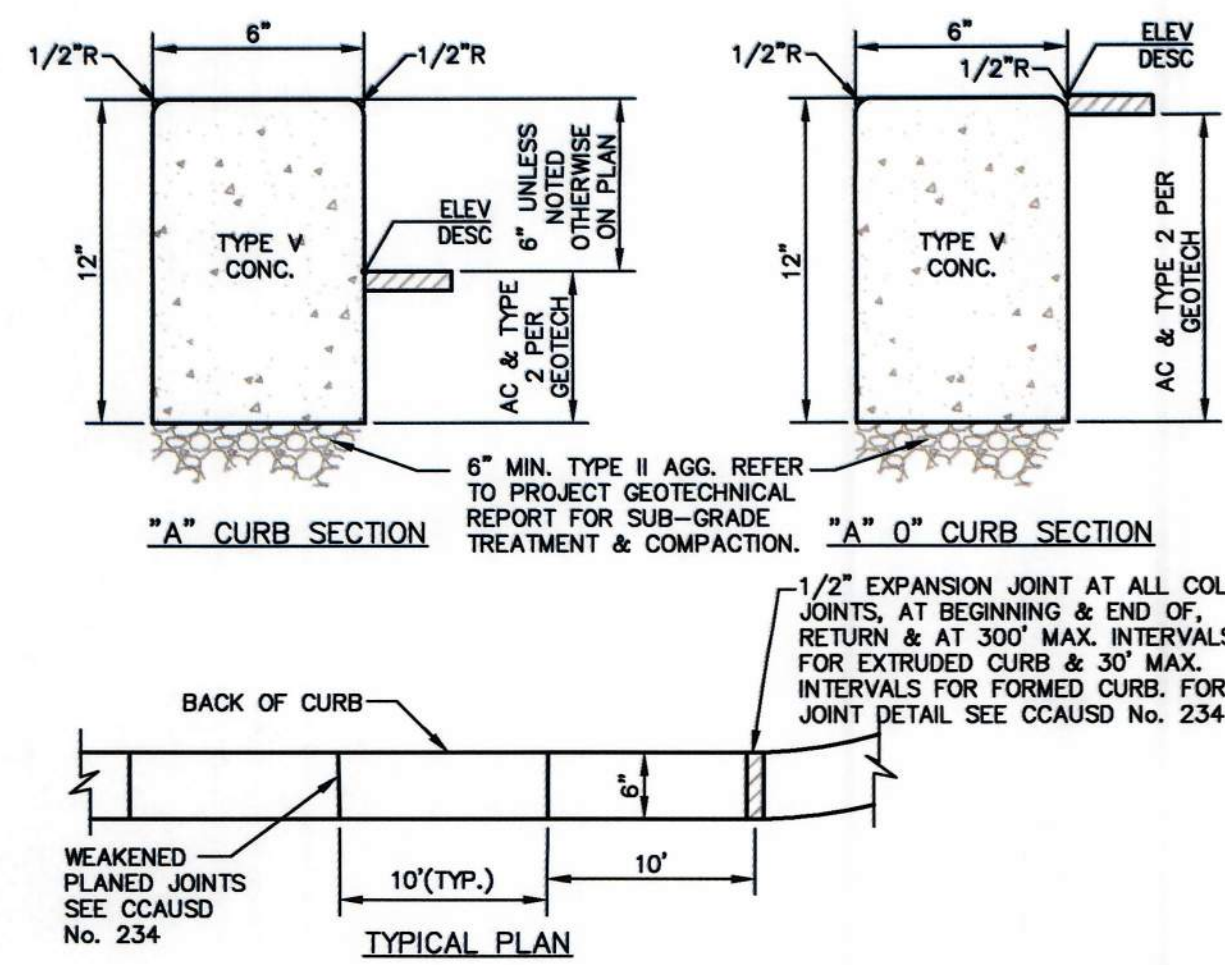
PROJECT No.: 221183
 DATE: 02/01/2023
 SCALE: 1" = 30'
 DRAWN BY: JC
 DESIGNED BY: BZ
 CHECKED BY: GMM
 DIGITAL SIGNATURE:

PROJECT TITLE:
 LAS VEGAS-ARTS DISTRICT
 123 W IMPERIAL AVE
 LAS VEGAS, NV 89102

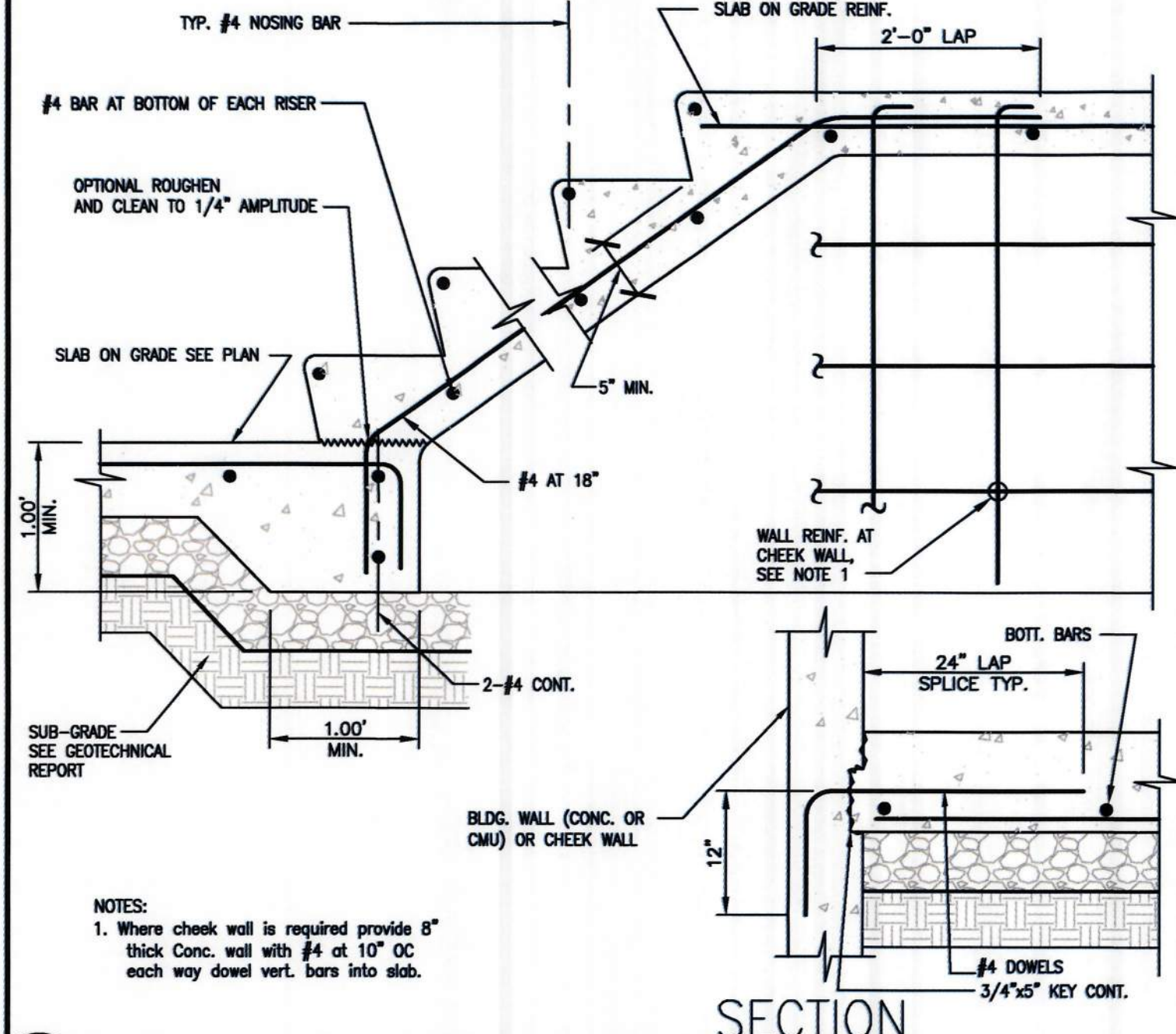
GRADING PLANS
 SHEET 1 OF 1

DESIGN DEVELOPMENT
 01/12/2023

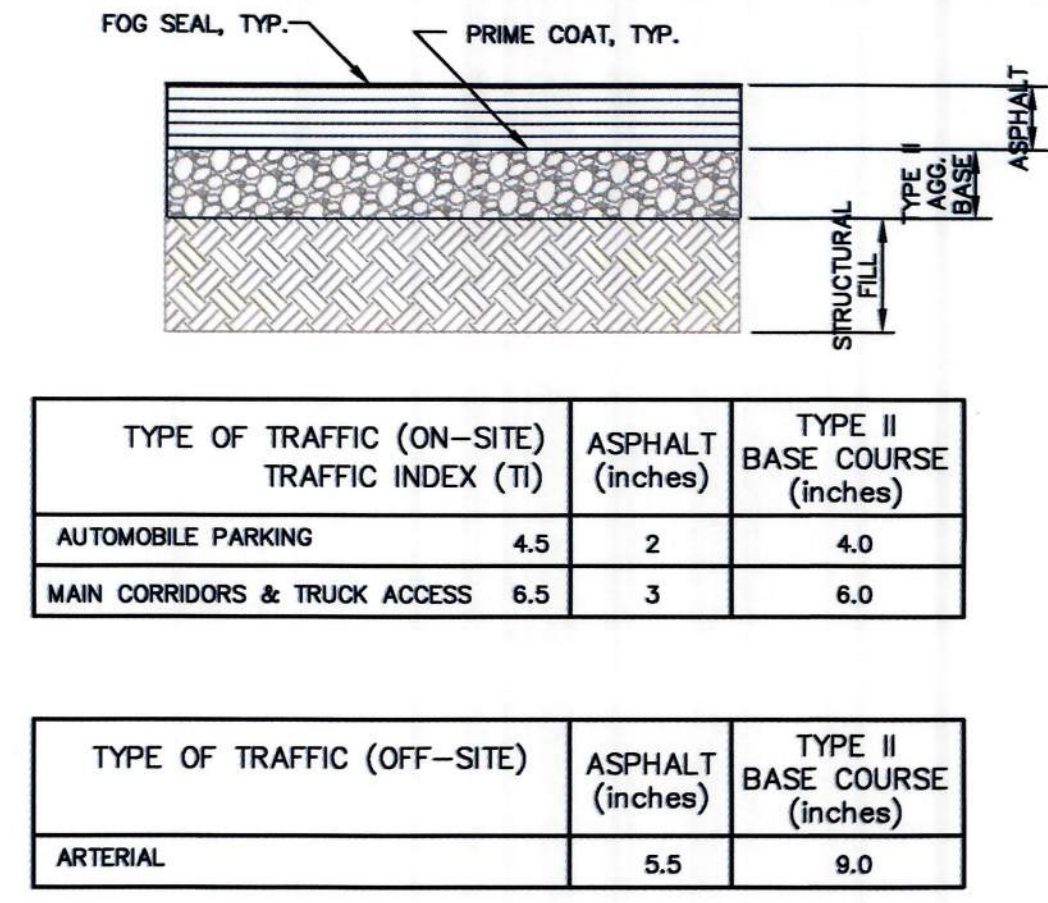
CLV DWG# XXXXXXX



1 "A" CURB NOT TO SCALE



2 CONCRETE STAIR ON GRADE NOT TO SCALE



TYPE OF TRAFFIC (ON-SITE)	TRAFFIC INDEX (TI)	ASPHALT (inches)	TYPE II BASE COURSE (inches)
AUTOMOBILE PARKING	4.5	2	4.0
MAIN CORRIDORS & TRUCK ACCESS	6.5	3	6.0

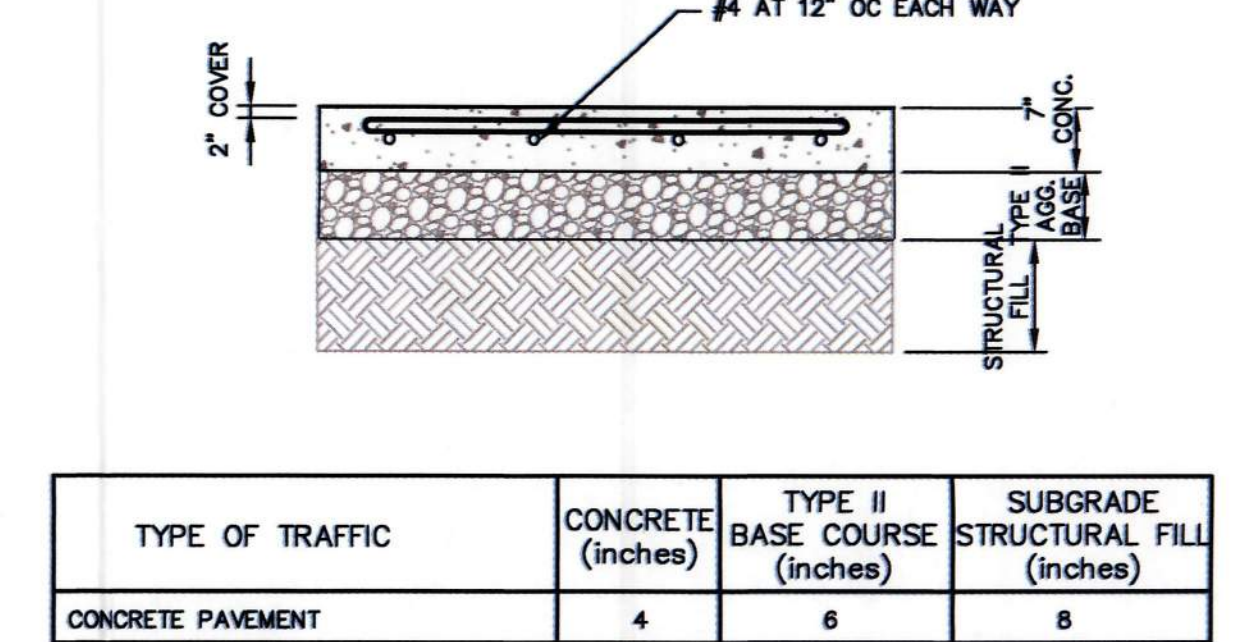
TYPE OF TRAFFIC (OFF-SITE)	ASPHALT (inches)	TYPE II BASE COURSE (inches)
ARTERIAL	5.5	9.0

PAVEMENT SECTION AS PROPOSED IN GEOTECHNICAL REPORT PREPARED BY: UNIVERSAL ENGINEERING SCIENCES PROJ. # 4030.2200064 DATED: MAY 25, 2022

REFER TO PROJECT GEOTECHNICAL REPORT FOR ALL SUB-GRADE PREPARATION & COMPACTION.

NOTE: ALL AGGREGATE BASES SHALL BE COMPACTED PER GEOTECHNICAL REPORT PRELIMINARY PAVEMENT SECTIONS SHALL BE VERIFIED WITH THE FINAL PAVEMENT SECTION RECOMMENDATION REPORT (MPSR) PRIOR TO CONSTRUCTION. IF FINAL PAVEMENT SECTIONS ARE DIFFERENT, A REVISION TO THE IMPROVEMENT PLANS WILL BE REQUIRED.

3 AC PAVEMENT SECTION NOT TO SCALE



TYPE OF TRAFFIC	CONCRETE (inches)	TYPE II BASE COURSE (inches)	SUBGRADE STRUCTURAL FILL (inches)
CONCRETE PAVEMENT	4	6	8

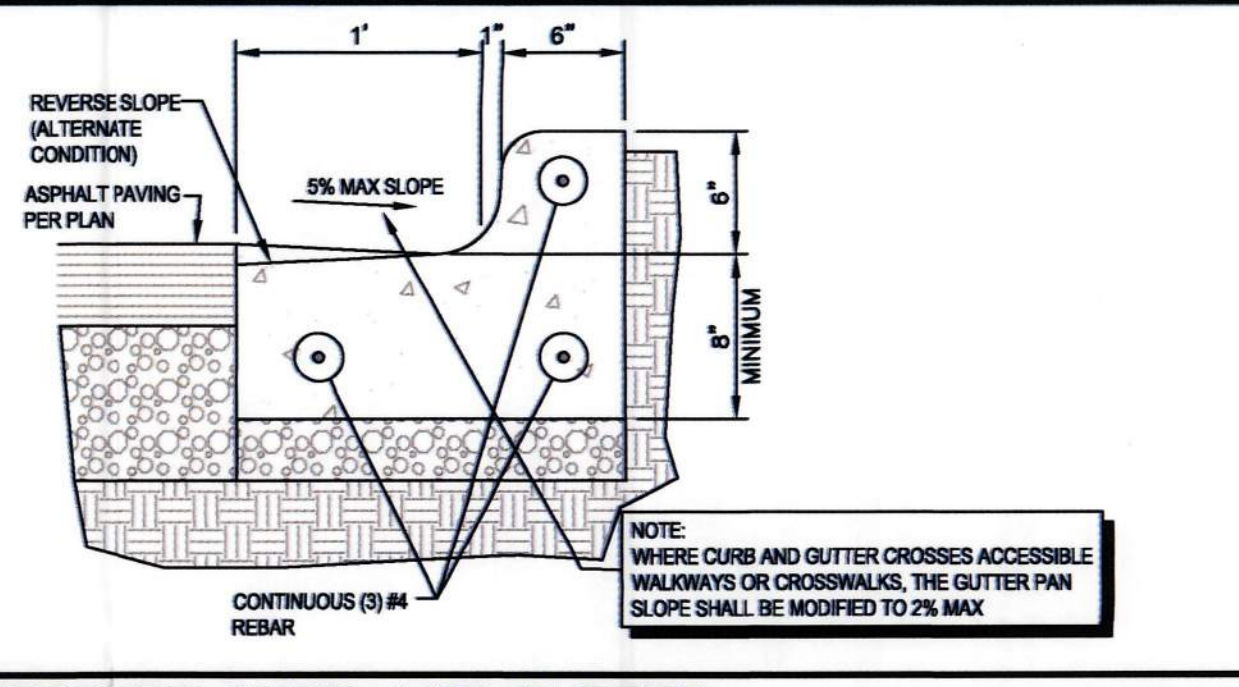
REFER TO PROJECT GEOTECHNICAL REPORT FOR ALL SUB-GRADE PREPARATION & COMPACTION.

NOTE: ALL AGGREGATE BASES SHALL BE COMPACTED PER GEOTECHNICAL REPORT PRELIMINARY PAVEMENT SECTIONS SHALL BE VERIFIED WITH THE FINAL PAVEMENT SECTION RECOMMENDATION REPORT (MPSR) PRIOR TO CONSTRUCTION. IF FINAL PAVEMENT SECTIONS ARE DIFFERENT, A REVISION TO THE IMPROVEMENT PLANS WILL BE REQUIRED.

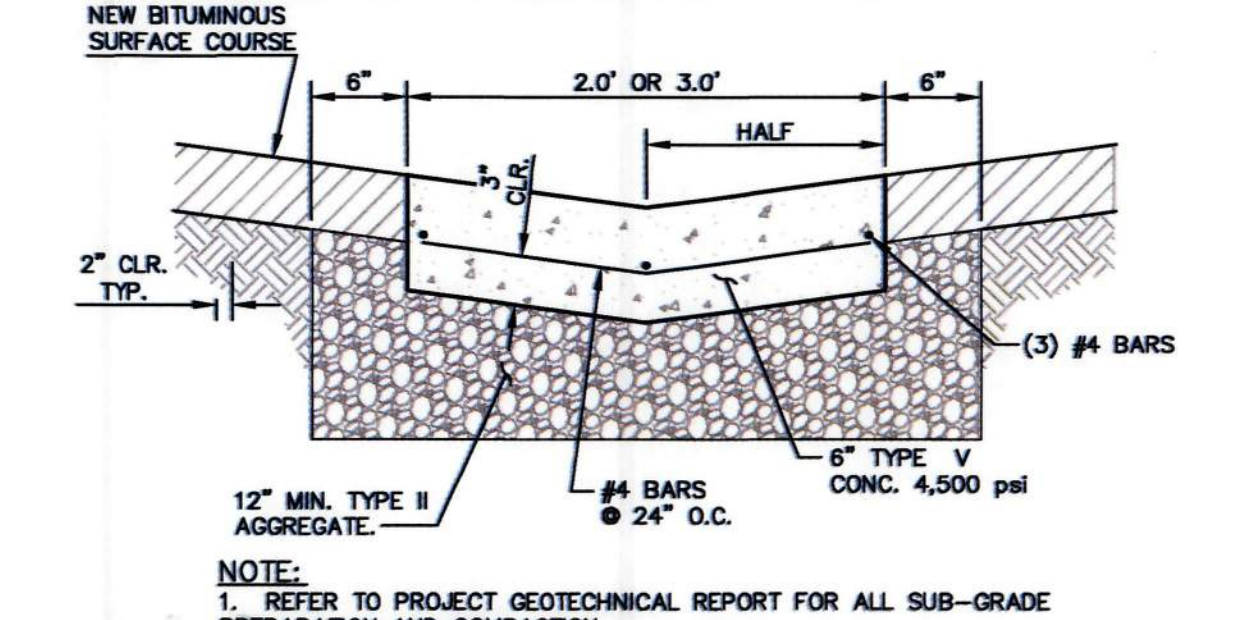
4 CONCRETE PAVEMENT SECTION NOT TO SCALE



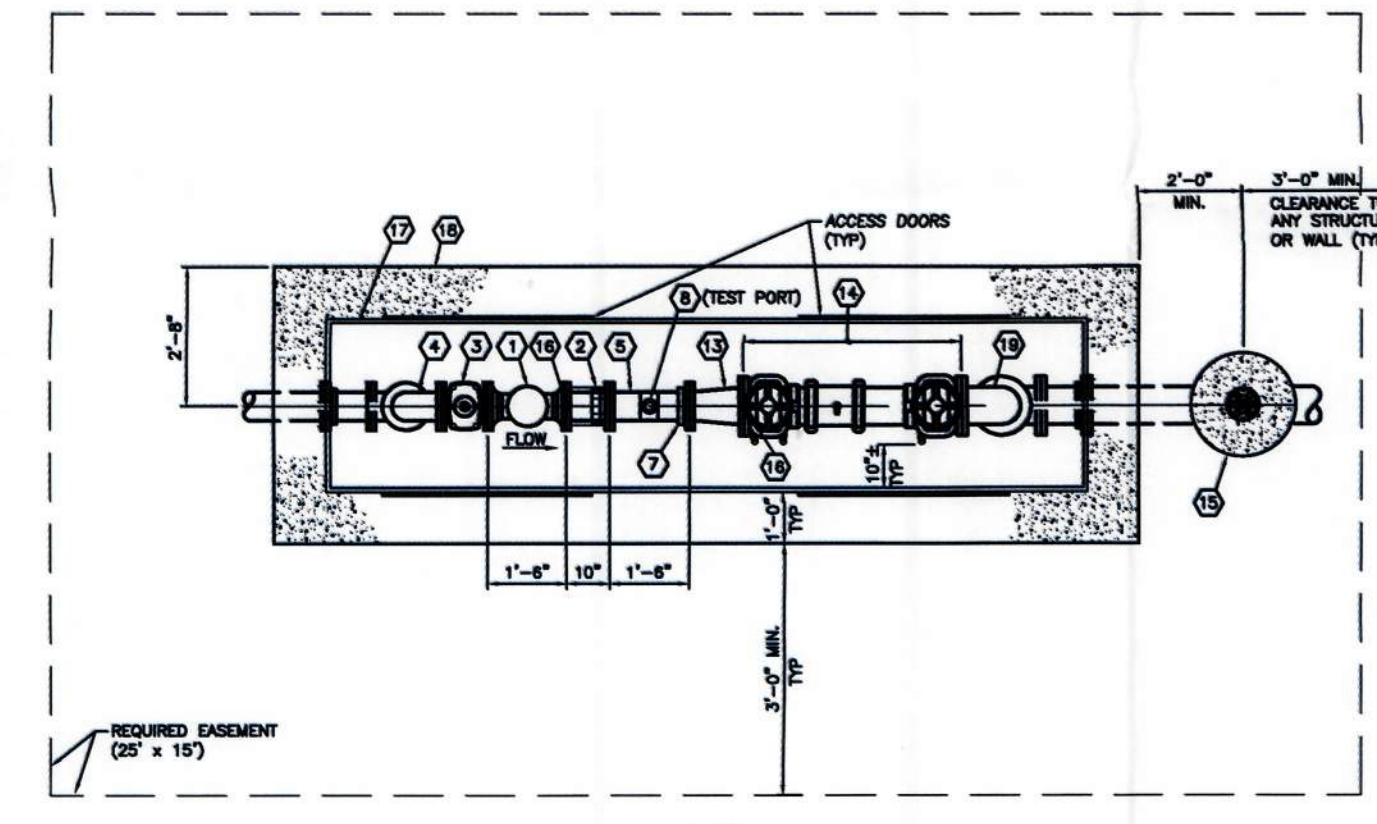
7 FIRE ENTRANCE WARNING SIGN NOT TO SCALE



5 CONCRETE CURB AND GUTTER NOT TO SCALE



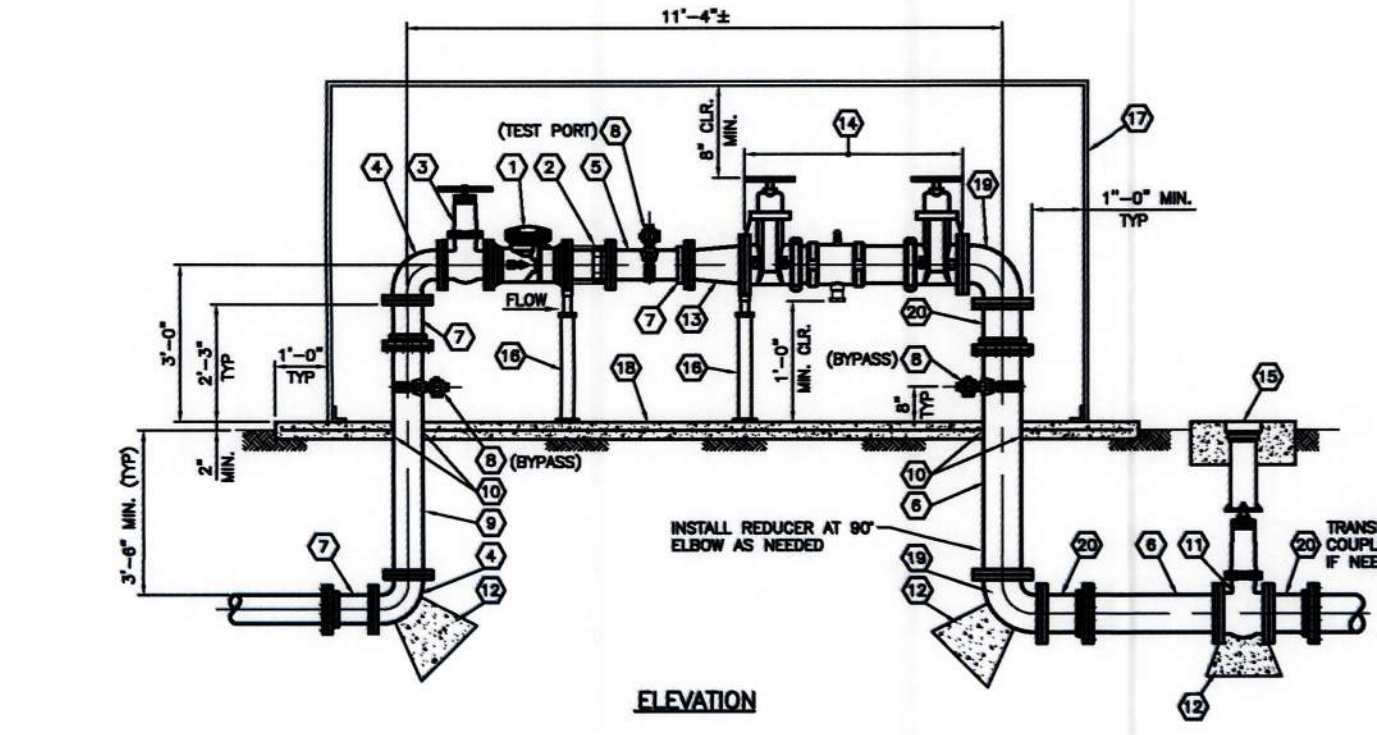
6 VALLEY GUTTER NOT TO SCALE



- DESIGNER/ENGINEER NOTES:**
- PRIOR TO SELECTION OF METER/BACKFLOW ASSEMBLY LOCAL OWNERS TO VERIFY EXISTING METER AND BACKFLOW CAPACITY, FLOW AND EXISTING PRESSURE AT THE ASSEMBLY INSTALLATION LOCATION.
 - BASED ON RESEARCH RESULTS, IF MORE THAN ONE STANDARD METER/BACKFLOW ASSEMBLY OR MANUFACTURERS MAY BE UTILIZED THEN ALL APPLICABLE DETAILS ARE TO BE SHOWN ON THE DRAWINGS FOR CONTRACTOR SELECTION.
 - ALL ASSEMBLY PIPING, CONNECTIONS AND EXISTING SIZES TO ACCOMMODATE THE LARGEST LISTED OPTION SIZES OF CONNECTION SECTION TO AVOID CONFLICTS DURING CONSTRUCTION.
- REMOVE THESE NOTES WHEN DETAIL USED

- INSTALLATION NOTES:**
- CONTRACTOR SHALL BE RESPONSIBLE FOR REPLACING ANY AND ALL DAMAGED OR DISTURBED EXISTING LANDSCAPING AND IRRIGATION FACILITIES IN AND ADJACENT TO PROJECT SITE, DURING CONSTRUCTION OPERATIONS.
 - CONTRACTOR TO HAVE NEVADA LICENSED PROFESSIONAL LAND SURVEYOR LOCATE LIVED EMBANKMENT PRIOR TO CONSTRUCTION.
 - CONTRACTOR TO LOCATE ON-SITE PIPING AND CONFIRM DIAMETER, PIPE SIZES AND PIPE MATERIAL PRIOR TO ORDERING MATERIAL AND INSTALLATION.
 - CONTRACTOR TO VERIFY DIMENSIONS OF CABINET BASED ON INSTALLED DIMENSIONS OF PIPE AND FITTINGS PRIOR TO FABRICATION.
 - CONTRACTOR TO INSTALL VALVE LOCK DEVICE WITH DISTRICT PROVIDED LOCK (AS REQUIRED).
 - APPROVED EQUAL MATERIALS CAN BE FOUND ON THE LIVED APPROVED PRODUCTS LIST.
 - 12\"/>

- MATERIAL LIST**
- | | |
|-------------|---|
| (1) 6\"/> | (12) CONCRETE THRUST/ANCHOR BLOCK |
| (2) 6\"/> | (13) 6\"/> |
| (3) 6\"/> | (14) 6\"/> |
| (4) 6\"/> | (15) VALVE BOX AND COLLAR (NOTE 8) |
| (5) 6\"/> | (16) APPROVED ENCLOSURE WITH 4 DOORS (CONTRACTOR TO SUBMIT SHOP DRAWINGS) |
| (6) 6\"/> | (17) CONCRETE PAD WITH WELDED WIRE FABRIC, 4\"/> |
| (7) 6\"/> | (18) 6\"/> |
| (8) 6\"/> | (19) 6\"/> |
| (9) 1/2\"/> | (20) 6\"/> |
| (10) 6\"/> | |



8 6\"/>

DESIGN DEVELOPMENT
01/12/2023

Lochsa
Engineering

LAS VEGAS-ARTS DISTRICT
123 W IMPERIAL AVE
LAS VEGAS, NV 89102

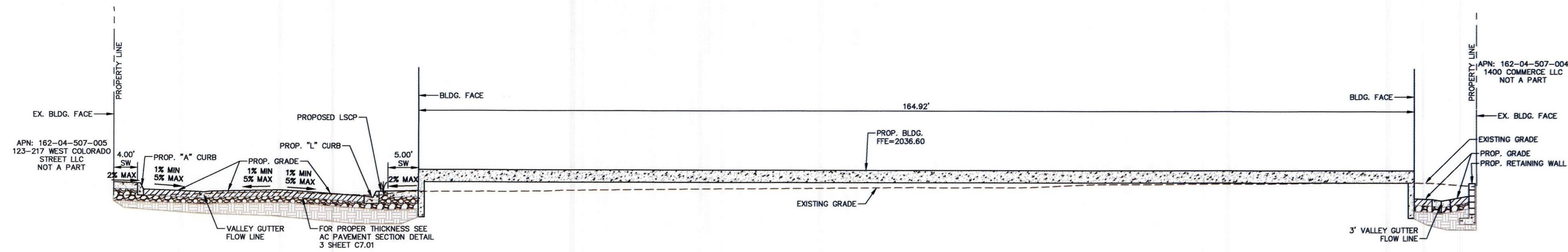
DETAIL SHEETS
SHEET 1 OF 2

PROJECT No.: 221183
DATE: 02/01/2023
SCALE: NA
DRAWN BY: JC
DESIGNED BY: BZ
CHECKED BY: GMM
DIGITAL SIGNATURE:

GUY M. MORRIS
Professional Engineer - State of Nevada
Exp. 12-31-23
No. 14526
02/01/2023

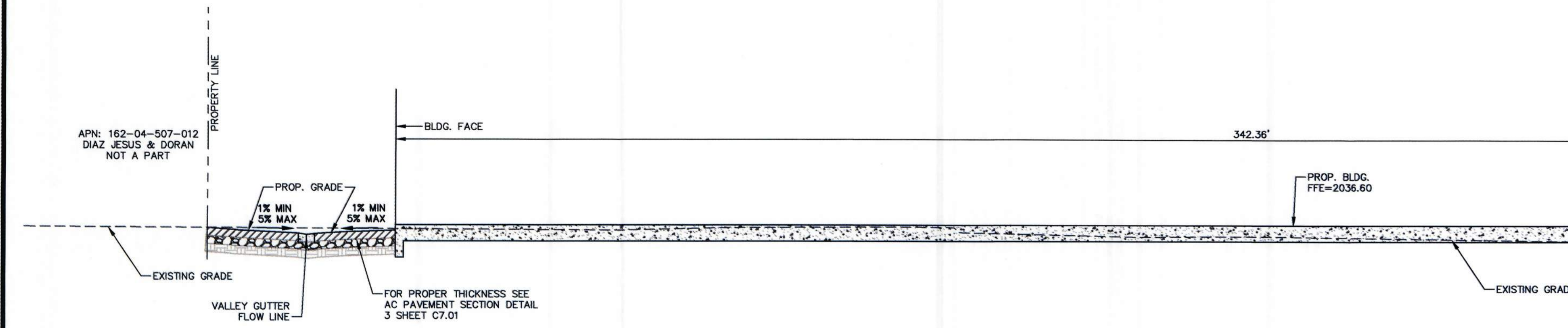
SHEET No.
C7.01
SHEET 7 OF 8
OFFSITE CLV No.

CLV DWG# XXXXXXX



A CROSS SECTION A

NOT TO SCALE

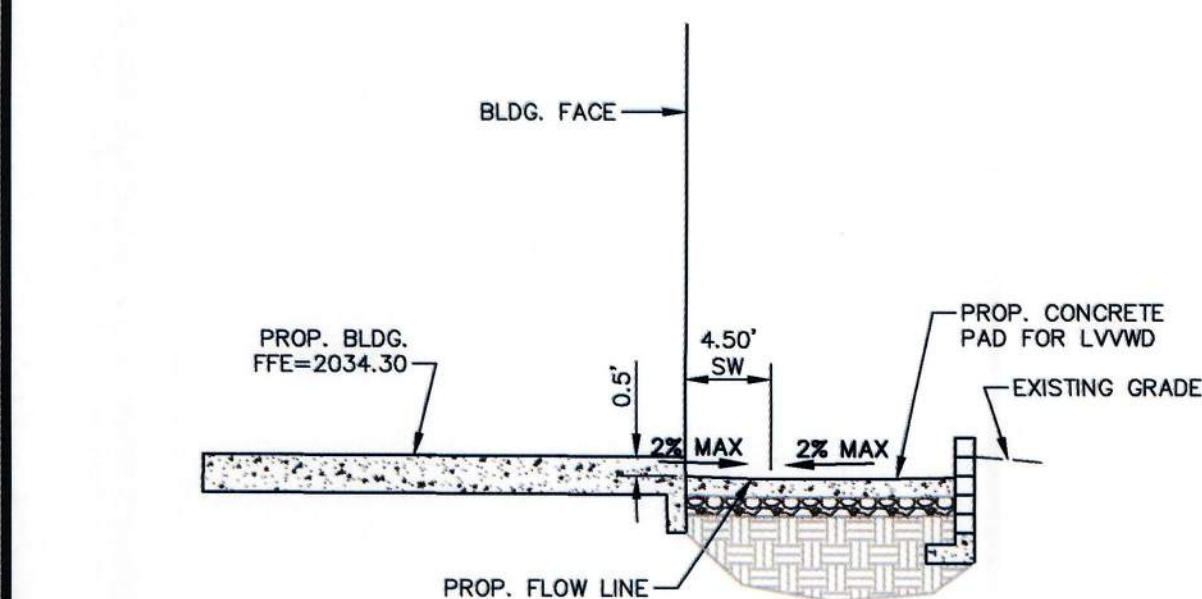


MATCHLINE - SEE SHEET: ABOVE RIGHT

MATCHLINE - SEE SHEET: BELOW LEFT

B CROSS SECTION B

NOT TO SCALE



C CROSS SECTION C

NOT TO SCALE

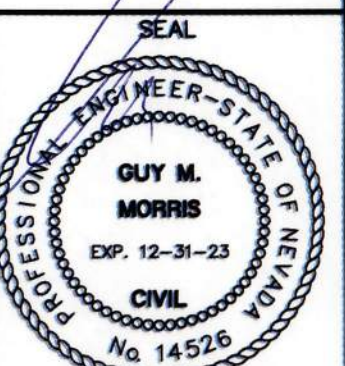
DESIGN DEVELOPMENT	
01/12/2023	
REV:	DATE:
BY:	DESCRIPTION:

6348 South Loma Blvd.
Suite 100
Las Vegas, NV 89118
Fax: 702.268.3317
www.lochsa.com



DETAIL SHEETS
SHEET 2 OF 2
LAS VEGAS-ARTS DISTRICT
123 W IMPERIAL AVE
LAS VEGAS, NV 89102

PROJECT No.:	221183
DATE:	02/01/2023
SCALE:	NA
DRAWN BY:	JC
DESIGNED BY:	BZ
CHECKED BY:	GMM
DIGITAL SIGNATURE:	



02/01/2023
SHEET No.
C7.02
SHEET 8 OF 8
OFFSITE CLV No.

2/1/2023 3:18 PM
C:\Users\jmorris\OneDrive\Documents\221183-701-C7.dwg

CLV DWG# XXXXXXXX