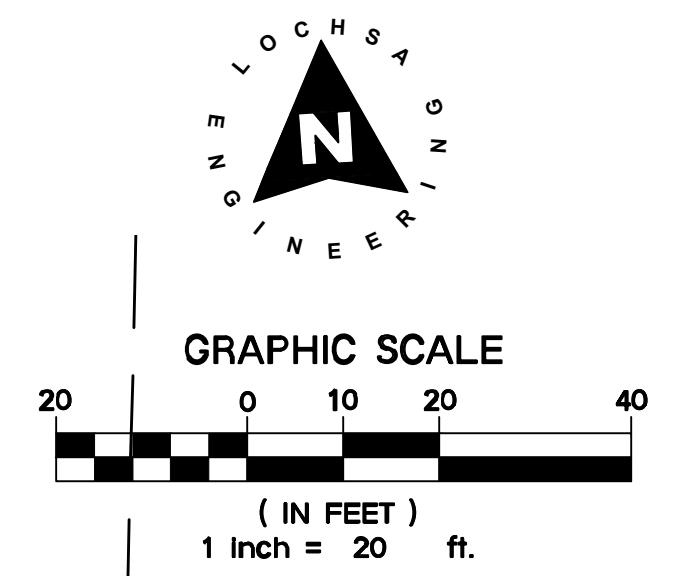
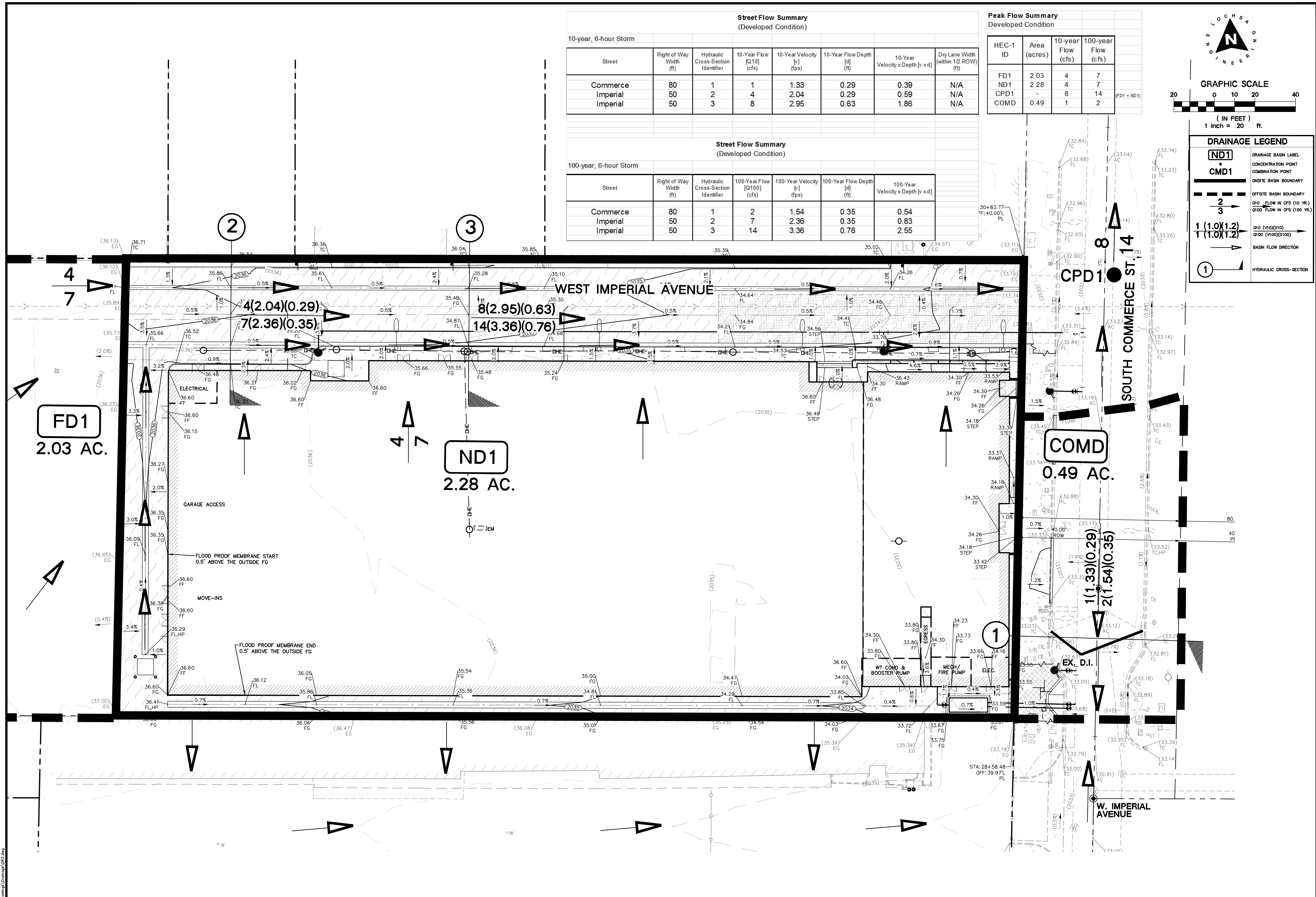
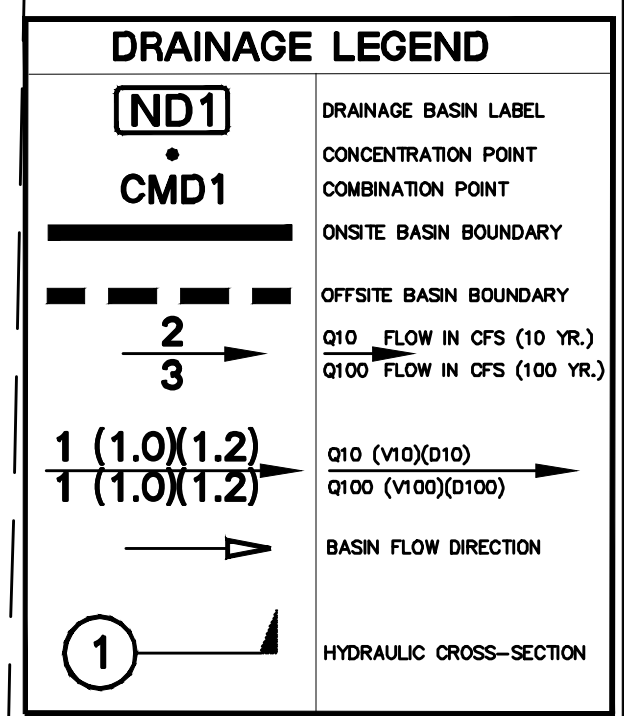


Street Flow Summary (Developed Condition)							
10-year, 6-hour Storm							
Street	Right of Way Width (ft)	Hydraulic Cross-Section Identifier	10-Year Flow [Q10] (cfs)	10-Year Velocity [v] (fps)	10-Year Flow Depth [d] (ft)	10-Year Velocity x Depth [v x d]	Dry Lane Width (within 1/2 ROW) (ft)
Commerce	80	1	1	1.33	0.29	0.39	N/A
Imperial	50	2	4	2.04	0.29	0.59	N/A
Imperial	50	3	8	2.95	0.63	1.86	N/A

Peak Flow Summary			
Developed Condition			
HEC-1 ID	Area (acres)	10-year Flow (cfs)	100-year Flow (cfs)
FD1	2.03	4	7
ND1	2.28	4	7
CPD1	-	8	14
COMD	0.49	1	2



Street Flow Summary (Developed Condition)							
100-year, 6-hour Storm							
Street	Right of Way Width (ft)	Hydraulic Cross-Section Identifier	100-Year Flow [Q100] (cfs)	100-Year Velocity [v] (fps)	100-Year Flow Depth [d] (ft)	100-Year Velocity x Depth [v x d]	
Commerce	80	1	2	1.54	0.35	0.54	
Imperial	50	2	7	2.36	0.35	0.83	
Imperial	50	3	14	3.36	0.76	2.55	



CL OR SURVEY LINE	EASEMENT LINE	DESCRIPTION:	BUILDING OUTLINE	EDGE OF PAVEMENT	"A" TYPE CURBS	"L" TYPE CURBS	WALLS	CONTOUR LINES	AC PAVEMENT	CONCRETE	SPOT ELEVATIONS	SIGNS	MANHOLE W/ DESCRIPTION	MANHOLE DESCRIPTIONS	FIRE HYDRANTS	GATE VALVES	REDUCERS	CLEAN OUTS	UTILITY BOX OR VAULT	80' ROW LED STREETLIGHTS	80' ROW LED STREETLIGHTS	100' ROW LED STREETLIGHTS	INTERSECTION STREETLIGHTS	
---	---	EXISTING:	---	---	---	---	---	---	---	---	---	---	---	---	---	---	---	---	---	---	---	---	---	---
---	---	PROPOSED:	---	---	---	---	---	---	---	---	---	---	---	---	---	---	---	---	---	---	---	---	---	---

DESIGN DEVELOPMENT 01/12/2023
 ONSITE DRAINAGE MAP (DEVELOPED CONDITION)
 123 W IMPERIAL AVE
 CITY OF LAS VEGAS, NEVADA
 APN: 162-04-507-011
 PROJECT No.: 221183
 DATE: 02/01/2023
 SCALE: 1" = 20'
 DRAWN BY: CB
 DESIGNED BY: CB
 CHECKED BY: CB
 DIGITAL SIGNATURE:
 SHEET No. DR2
 SHEET 2 OF 2
 OFFSITE CLV No. CLV DWG# XXXXXXX