

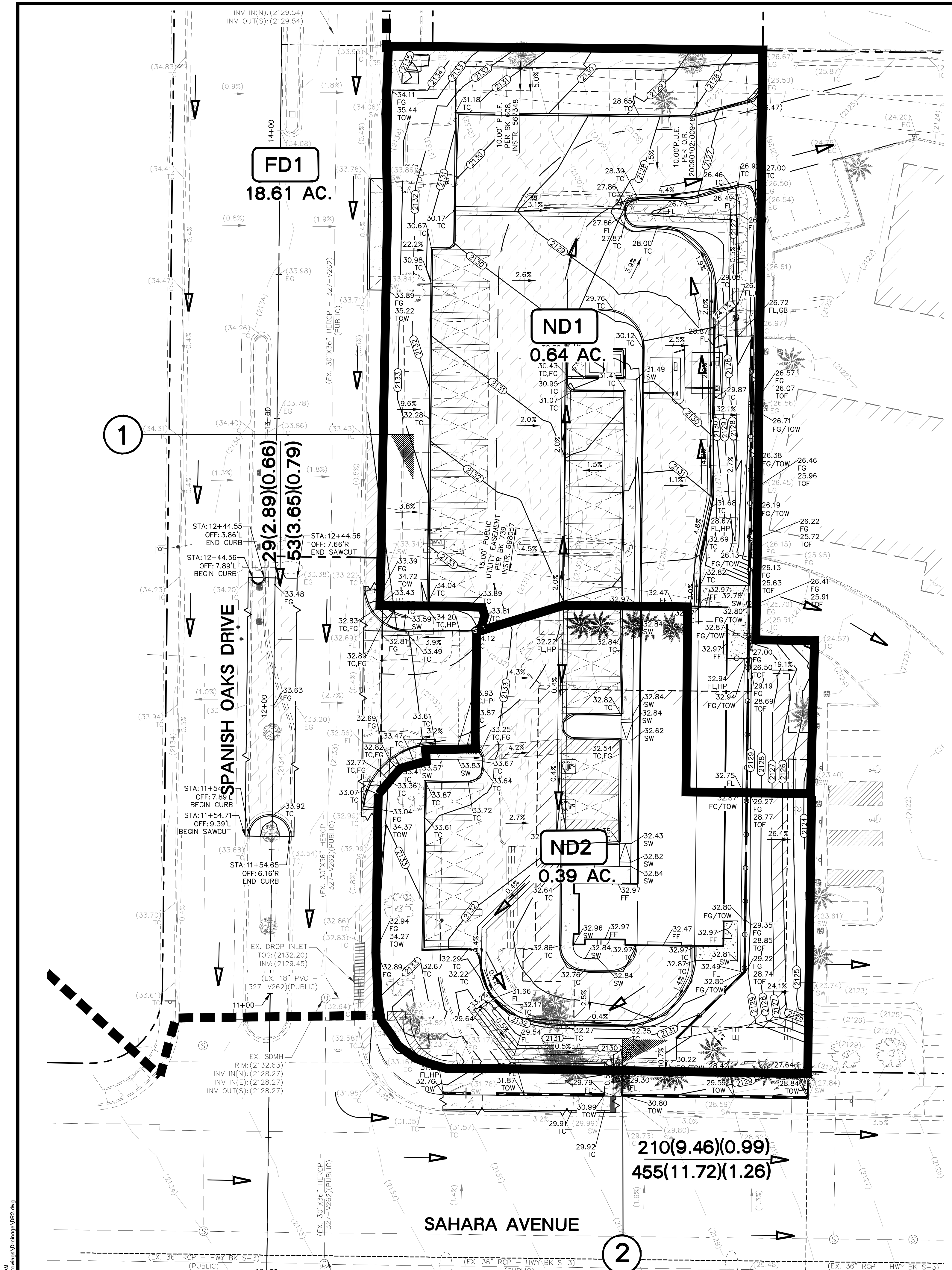
DRAINAGE LEGEND	
<b>ND1</b>	DRAINAGE BASIN LABEL
<b>CMD1</b>	CONCENTRATION POINT
	ONSITE BASIN BOUNDARY
	OFFSITE BASIN BOUNDARY
	Q10 FLOW IN CFS (10 YR.)
	Q100 FLOW IN CFS (100 YR.)
	Q10 (V10)(D10)
	Q100 (V100)(D100)
	BASIN FLOW DIRECTION
	HYDRAULIC CROSS-SECTION

Peak Flow Summary			
Developed Condition			
HEC-1 ID	Area (acres)	10-year Flow	100-year Flow
FD1	18.61	29	53
ND2	0.39	1	1
ND1	0.64	1	2

Street Flow Summary (Developed Condition)							
10-year, 6-hour Storm							
Street	Right of Way Width (ft)	Hydraulic Cross-Section Identifier	10-Year Flow [Q10] (cfs)	10-Year Velocity [V] (fps)	10-Year Flow Depth [D] (ft)	10-Year Velocity x Depth [V x D]	Dry Lane Width (within 1/2 ROW) (ft)
Spanish Oaks	75	1	29	2.89	0.66	1.91	N/A
Sahara Avenue (North half)	75	2	210	9.46	0.99	9.37	N/A

Street Flow Summary (Developed Condition)							
100-year, 6-hour Storm							
Street	Right of Way Width (ft)	Hydraulic Cross-Section Identifier	100-Year Flow [Q100] (cfs)	100-Year Velocity [V] (fps)	100-Year Flow Depth [D] (ft)	100-Year Velocity x Depth [V x D]	
Spanish Oaks	75	1	53	3.65	0.79	2.88	
Sahara Avenue (North half)	75	2	455	11.72	1.26	14.77	



CL OR SURVEY LINE	EASEMENT LINE	DESCRIPTION:	BUILDING OUTLINE	EDGE OF PAVEMENT	"A" TYPE CURBS	"L" TYPE CURBS	WALLS	CONTOUR LINES	AC PAVEMENT	CONCRETE	SPOT ELEVATIONS	SIGNS	MANHOLE W/ DESCRIPTION	MANHOLE DESCRIPTIONS	FIRE HYDRANTS	GATE VALVES	REDUCERS	CLEAN OUTS	UTILITY BOX OR VAULT	60' ROW LED STREETLIGHTS	80' ROW LED STREETLIGHTS	100' ROW LED STREETLIGHTS	INTERSECTION STREETLIGHTS
		EXISTING: PROPOSED:												(S) = SANITARY SEWER (D) = STORM DRAIN (E) = ELECTRICAL (T) = TELEPHONE									

**Lochsa**  
engineering

6546 South Jones Blvd.  
Las Vegas, NV 89118  
Phone (702) 365-9912  
Fax (702) 365-9317  
www.lochsa.com

**ONSITE DRAINAGE MAP (DEVELOPED CONDITION)**

**CAR WASH WEST SAHARA**

SHEET No. **DR2**  
SHEET 1 of 1  
OFFSITE HTE No.

PROJECT No.: 221125  
DATE: 12/8/2022  
SCALE: 1"=20'  
DRAWN BY: CB  
DESIGNED BY: CB  
CHECKED BY: CB  
DIGITAL SIGNATURE:

SEAL  
PROFESSIONAL ENGINEER-STATE OF NV  
**TED T. EGERTON**  
EXP. 12-31-22  
CIVIL  
No. 11286