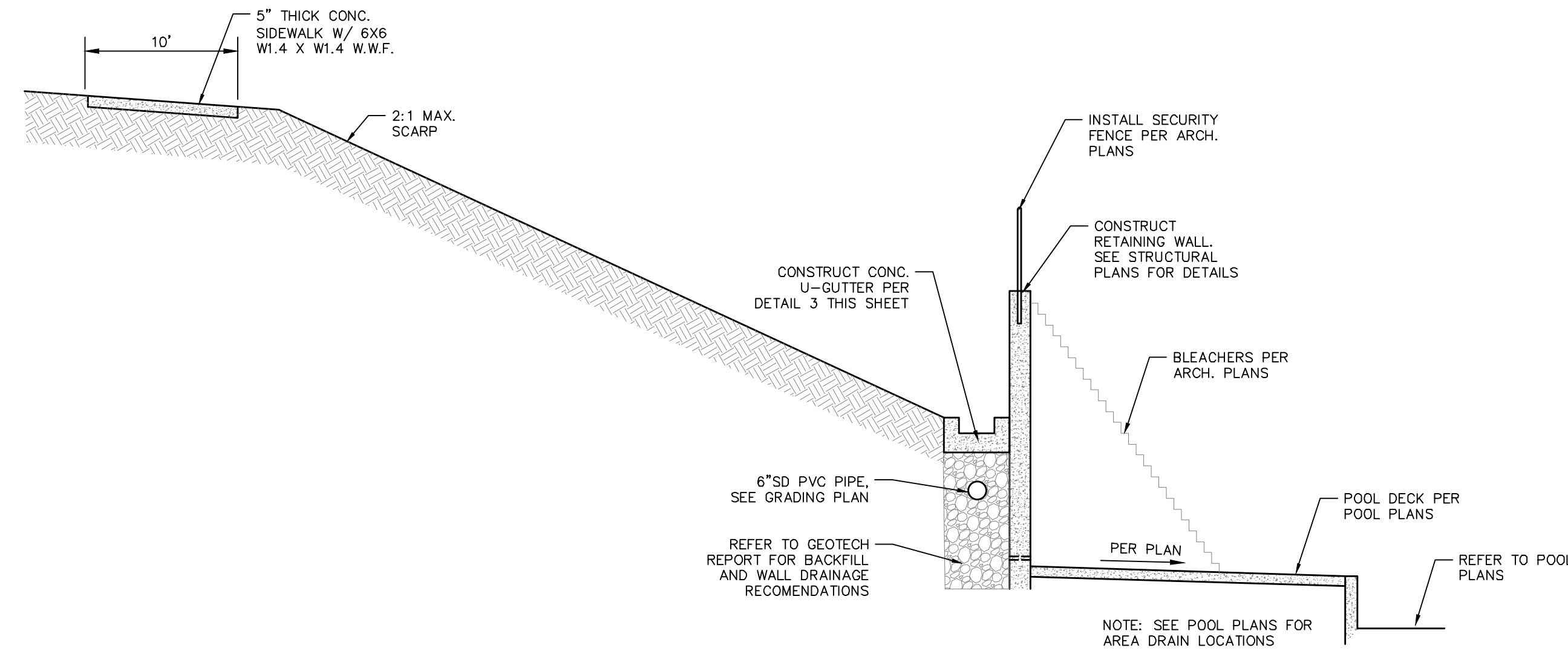
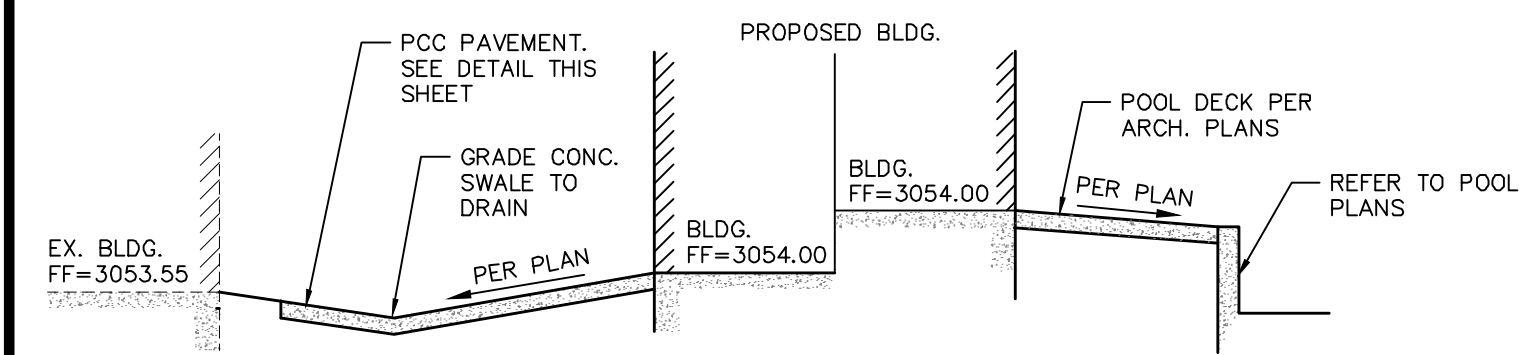


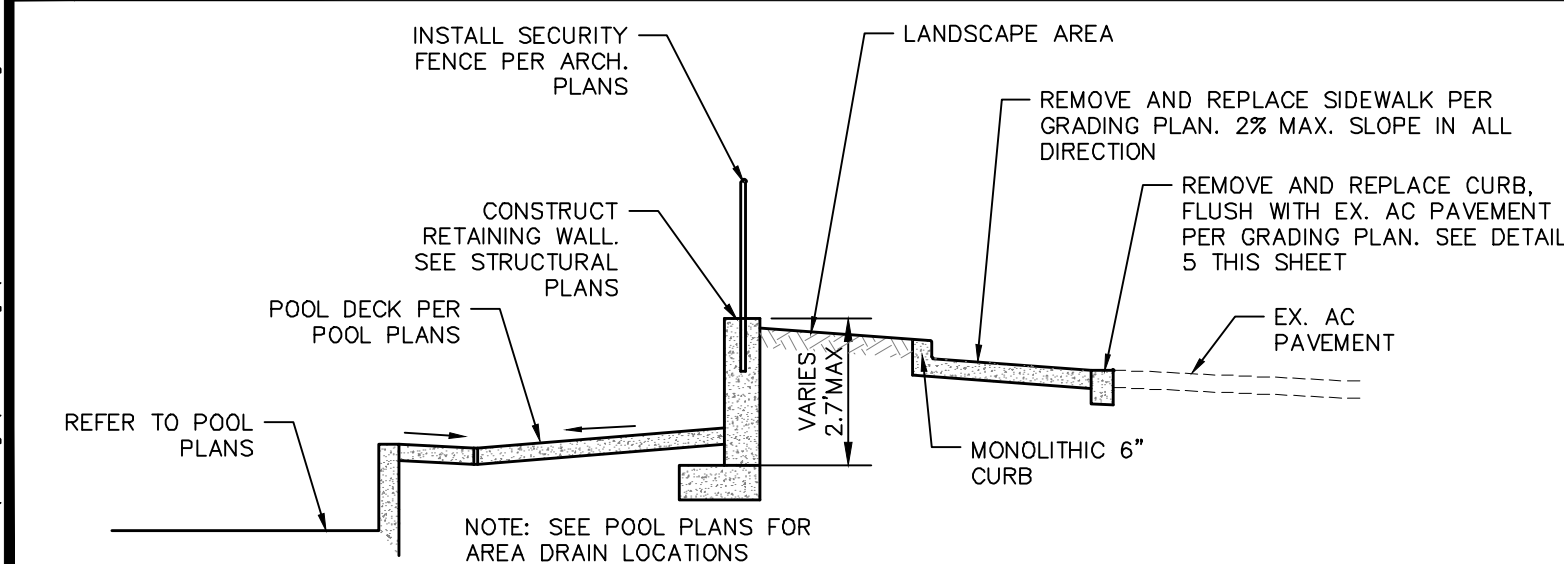
4 ADA RAMP DETAILS 1"=10'



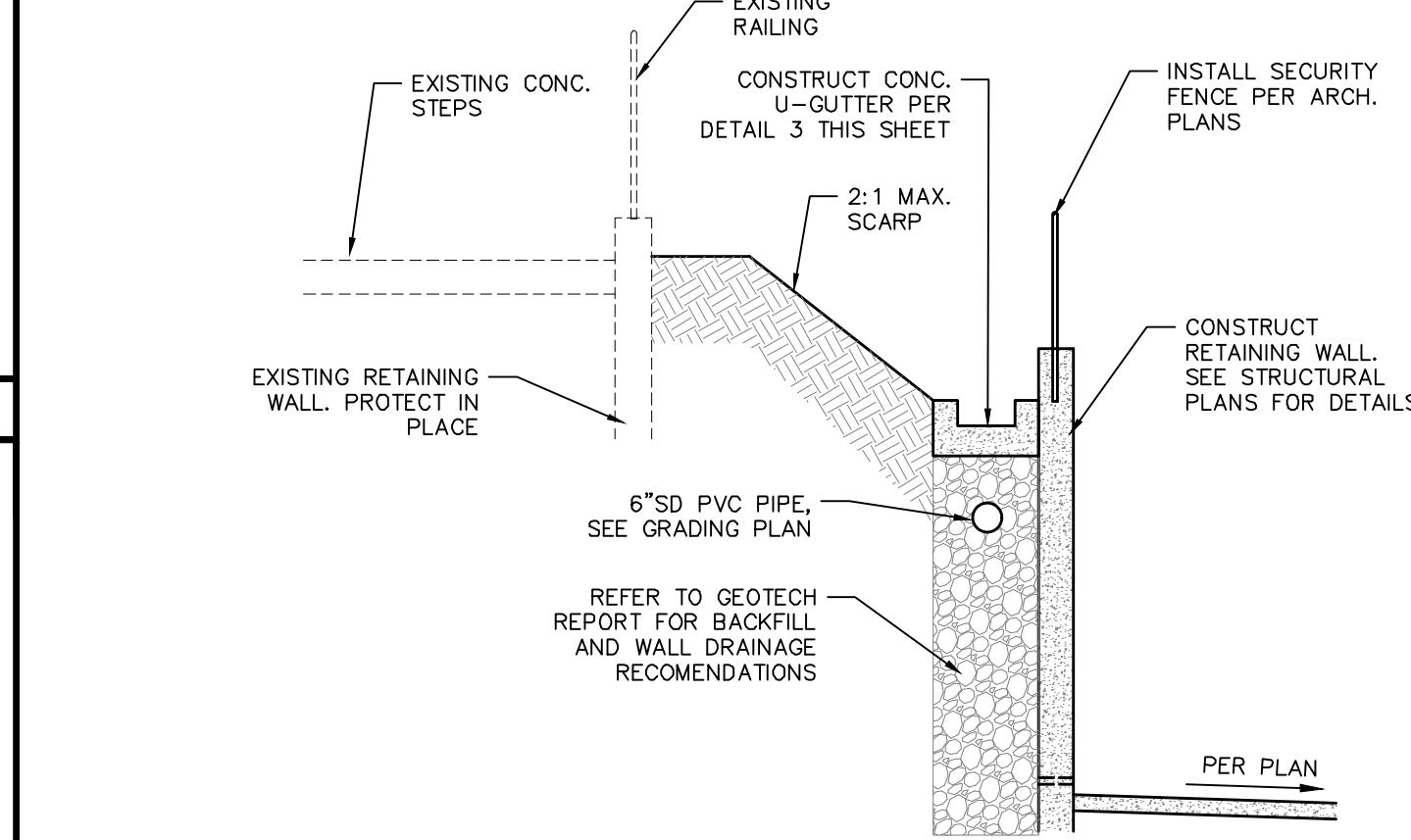
C SECTION NOT TO SCALE



B SECTION NOT TO SCALE

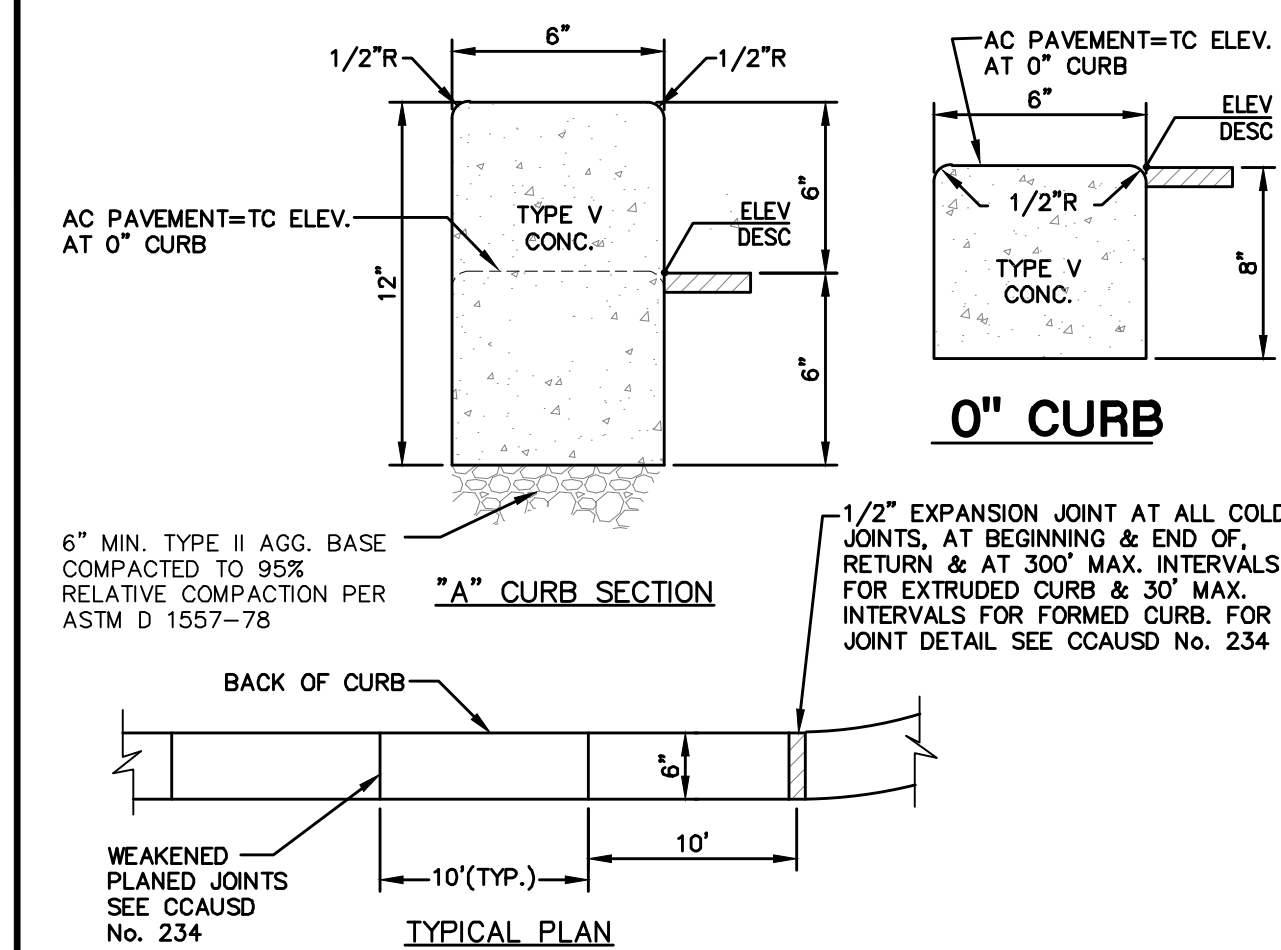


A SECTION NOT TO SCALE

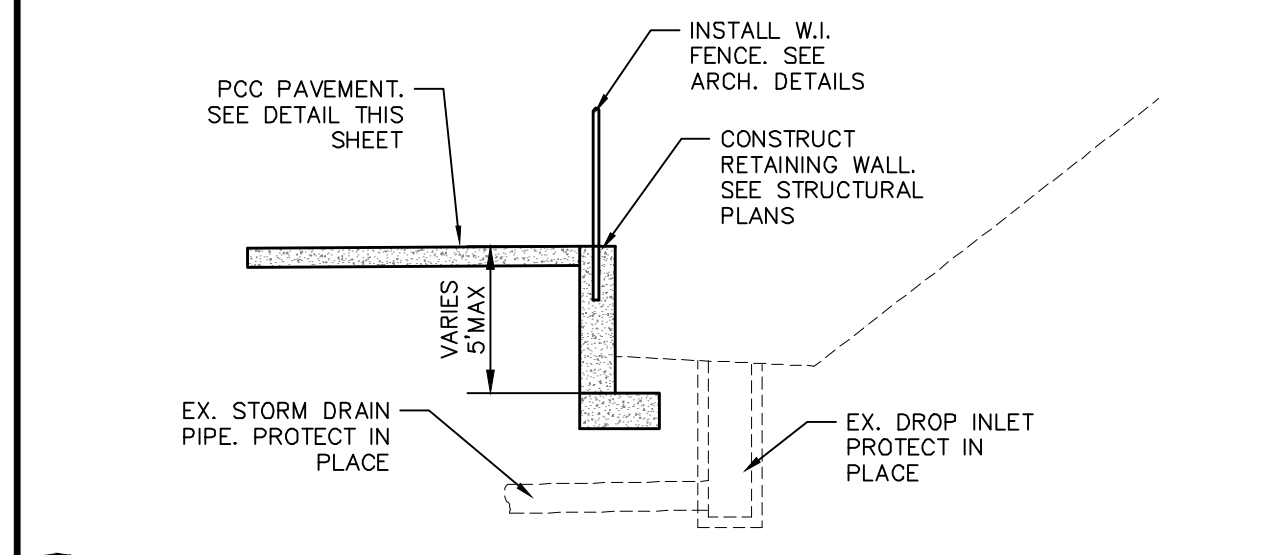


D SECTION NOT TO SCALE

5 ON-SITE 'A' CURB AND 0" CURB

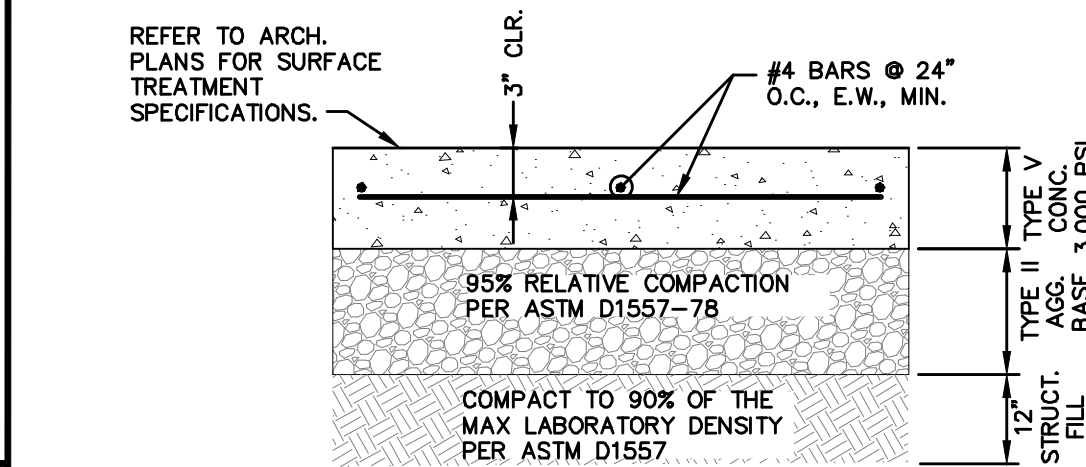
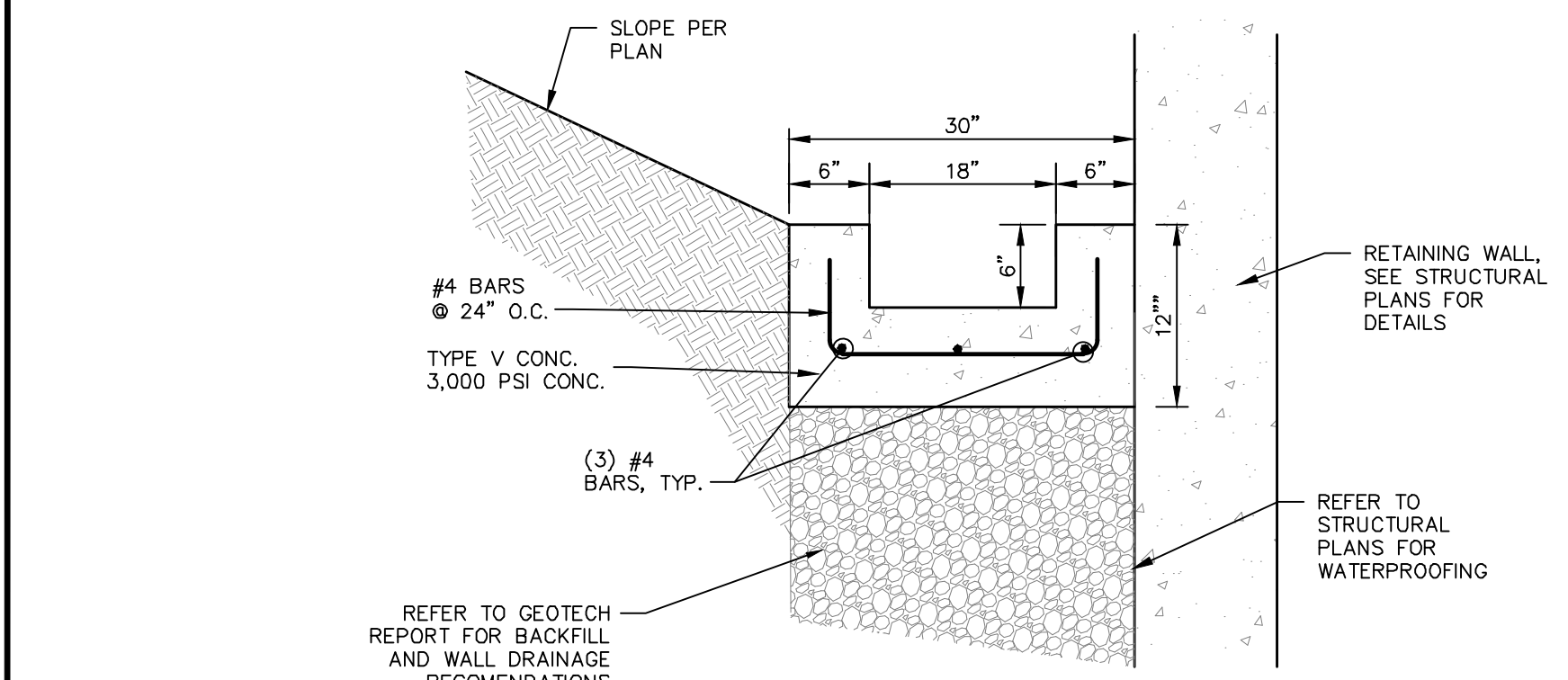


F SECTION

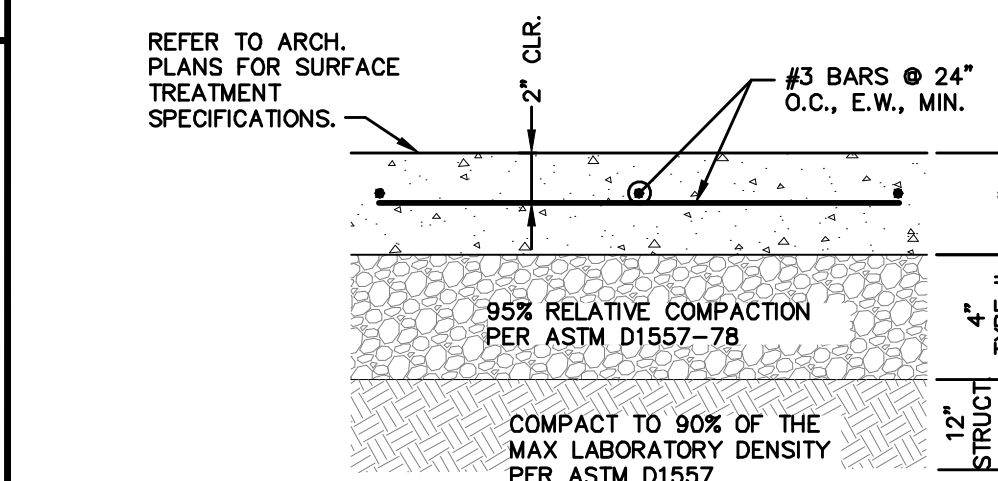


E SECTION

3 CONCRETE U-GUTTER NOT TO SCALE



2 PCC CONC. PVMNT. SECTION (ON-SITE) NOT TO SCALE



1 ON-SITE CONC. FLATWORK NOT TO SCALE

TYPE OF TRAFFIC	CONCRETE (inches)	TYPE II BASE COURSE (inches)
TRUCK AND HEAVY TRAFFIC AREAS	8"	6"

- FOR AREAS WITH VEHICLE TRAFFIC (PARKING, FIRE LANES, MAINTENANCE ACCESS, TRASH ENCLOSURES, ETC.)
 - REFER TO CCAUSD NO. 232 FOR CONCRETE PAVEMENT CONSTRUCTION DETAILS, IF APPLICABLE.
 - CONTROL JOINTS SHALL BE SPACED 10' MAX.
 - REFER CCAUSD NO. 233 FOR CONCRETE JOINT DETAILS.
- GEOTECHNICAL REPORT: SOUTHWEST GEOTECHNICAL PROJECT No. 206207 DATE: OCTOBER 8, 2021

Lochsa
 ENGINEERING
 6346 South Jones Blvd.
 Suite 300
 Las Vegas, NV 89118
 Phone (702) 365-5912
 Fax (702) 365-5917
 www.lochsa.com

DETAIL SHEETS
 SHEET 1 OF 1

CITY OF LAS VEGAS
 REGIONAL AQUATIC CENTER AT PAVILION POOL
 LAS VEGAS, NEVADA

PROJECT No.: 211046
 DATE: 1/9/2023
 SCALE: NTS
 DRAWN BY: CP
 DESIGNED BY: CP
 CHECKED BY: GM

SHEET No. C7.01
 SHEET 7 OF 6
 L21-00693
 107V8815

PROFESSIONAL ENGINEER
 GUY M. MORRIS
 Exp. 12/31/23
 CIVIL
 No. 14526