

CNLV NOTES

I. PREFACE

A. ALL MAPS, TECHNICAL STUDIES, REPORTS, DESIGNS, CONSTRUCTION DRAWINGS, SPECIFICATIONS AND SPECIAL TECHNICAL REQUIREMENTS ASSOCIATED WITH THE PROJECT AND IMPROVEMENTS PREPARED HEREIN HAS BEEN ACCOMPLISHED UNDER THE SUPERVISION OF RESPONSIBLE PROFESSIONALS HAVING THE APPROPRIATE REGISTRATION TO SERVE IN THIS CAPACITY BASED ON THE SCOPE OF THIS SPECIFIC PROJECT, AND IN ACCORDANCE WITH THE STATUTORY PROVISIONS OF THE NEVADA REVISED STATUTES (NRS) AND THE NEVADA ADMINISTRATIVE CODE (NAC) INCLUDING:
NRS 278, 338, NRS 623, NRS 625, NAC 338, NAC 623 AND NAC 625

CERTIFICATION SIGNIFYING COMPLIANCE WITH STATUTORY AND RELATED ADMINISTRATIVE CODE REQUIREMENTS IS HEREBY PROVIDED BY THE RESPONSIBLE PROFESSIONAL(S) IN THE FORM OF A STAMP OR SEAL PLACED ON THE PROJECT DOCUMENTS.

B. THE PROJECT AND ALL IMPROVEMENTS RELATED THERETO AS ILLUSTRATED ON THE PROJECT DRAWINGS MUST CONFORM TO NORTH LAS VEGAS MUNICIPAL CODE INCLUDING THE TITLES AND CHAPTERS NOTED BELOW
TITLE 2, CHAPTER 2.36 ADMINISTRATIVE FEES
TITLE 8, CHAPTERS 8.16, 8.50 FIRE CODE AND STORMWATER REGULATIONS
TITLE 10, CHAPTERS 10.16 TRAFFIC CONTROL DEVICES
TITLE 10, CHAPTER 10.22 TEMPORARY TRAFFIC CONTROL REGULATIONS
TITLE 12, CHAPTER 12.08 PUBLIC WORKS PROJECT PERMIT AND PERFORMANCE REGULATIONS
TITLE 13 PUBLIC SERVICES
TITLE 15 UNIFORM REGULATIONS FOR THE CONTROL OF DRAINAGE
TITLE 16 SUBDIVISIONS

IT IS SPECIFIED THAT THESE TITLES AND CHAPTERS, AS A MINIMUM, WILL BE APPLIED ON A PROJECT SPECIFIC BASIS AND NOT CONSTRUED TO BE ALL INCLUSIVE OR EXCLUSIVE. THE PROJECT IS ALSO EXPECTED TO CONFORM WITH REVISIONS IN THE NORTH LAS VEGAS MUNICIPAL CODE AS IT MAY BE REVISED FROM TIME TO TIME.

C. PROJECT REVIEW BY REPRESENTATIVES OF THE CITY OF NORTH LAS VEGAS IS INTENDED TO COMPLETE AND AFFIRMABLE PROFESSIONAL REVIEW OF THE PROJECT AND ADVANCE THAT IS IN COMPLIANCE WITH CITY OF NORTH LAS VEGAS REQUIREMENTS, AND IS CONSISTENT WITH PUBLIC BENEFIT, HEALTH, SAFETY, AND WELFARE. REVIEW IS NOT AN ASSURANCE OF PROJECT FEASIBILITY, PROFESSIONAL AND TECHNICAL ACCURACY, OR CONFORMANCE WITH SPECIAL CONDITIONS IMPOSED BY PUBLIC AGENCIES, INCLUDING THE NORTH LAS VEGAS PLANNING COMMISSION.

D. APPROVAL OF THESE IMPROVEMENT PLANS AND SPECIFICATIONS IS MADE BASED ON THE REPRESENTATION THAT THE CONTRACTOR SHALL BE RESPONSIBLE FOR THE RESPONSIBILITIES AND PREPARED COMPLETE DOCUMENTS WHICH COMPLY WITH CITY OF NORTH LAS VEGAS REQUIREMENTS FOR CONSTRUCTION OF THE IMPROVEMENTS DEFINED HEREIN.

E. IF CONSTRUCTION HAS NOT COMMENCED WITHIN, OR IN THE EVENT OF AN INTERRUPTION IN CONSTRUCTION FOR A PERIOD OF, ONE (1) YEAR AFTER THE MOST RECENT APPROVAL DATE NOTED HEREON, THESE IMPROVEMENT PLANS MUST BE RESUBMITTED FOR EVALUATION BY THE CITY OF NORTH LAS VEGAS FOR POSSIBLE DESIGN UPDATE.

II. STANDARD SPECIFICATIONS AND STANDARD DRAWINGS FOR GENERAL CONSTRUCTION

A. ALL IMPROVEMENTS SHOWN ON THESE CONSTRUCTION DRAWINGS SHALL BE IMPLEMENTED IN ACCORDANCE WITH THE "UNIFORM STANDARD SPECIFICATIONS FOR PUBLIC WORKS CONSTRUCTION OFF-SITE IMPROVEMENTS DESIGN AREA, NEVADA," LATEST EDITION, APPROVED REVISIONS TO THESE STANDARDS ARE POSTED ON THE REGIONAL TRANSPORTATION COMMISSION OF SOUTHERN NEVADA WEBSITE.

B. EXCEPTIONS TO THESE STANDARDS ARE NOTED BELOW.

- 1. ALL PROVISIONS DIRECTLY RELATED TO THOSE PROCEDURES USED TO SOLICIT COMPETITIVE BIDS AND TO AWARD AND EXECUTE CONTRACTS FOR PUBLIC AGENCY PROJECTS.
2. THE CITY OF NORTH LAS VEGAS TRENCH BACKFILL POLICY DATED AUGUST 15, 1996, SHALL BE APPLIED TO ALL TRENCH BACKFILL PROJECTS, INCLUDING BUT NOT LIMITED TO TRENCH BACKFILL PROJECTS FROM THE DEPARTMENT OF PUBLIC WORKS, CONSTRUCTION SERVICES DIVISION, 2250 LAS VEGAS BLVD., N., SUITE 610 NORTH LAS VEGAS, NEVADA 89030, 633-1206.
3. THE CITY OF NORTH LAS VEGAS POLICY REGARDING GRADING AND CONSTRUCTION ON OR IN CLOSE PROXIMITY TO GEOLOGIC FAULTS AND GROUND FISSURES, COPIES OF THE POLICY CAN BE OBTAINED FROM THE DEPARTMENT OF PUBLIC WORKS, CONSTRUCTION SERVICES DIVISION, 2250 LAS VEGAS BLVD., N., SUITE 610 NORTH LAS VEGAS, NEVADA 89030, 633-1206.
4. WHERE ALLOWED, CURB AND GUTTER HAVING A DESIGN GRADE OF 0.5 PERCENT OR LESS SHALL BE CONSTRUCTED BY FORMING, FLOOR GRADINGS AND ELEVATIONS SHALL BE VERIFIED PRIOR TO PLACEMENT OF CONCRETE AND WATER FLOW TESTED AS SOON AS AFTER PLACEMENT AS CURING ALLOWS.
5. "NO PARKING" ZONES AT CURB RETURNS, FIRE HYDRANT ZONES AND SCHOOL ZONES SHALL BE PAINTED RED TO THE LIMITS NOTED ON THE PLANS, OR IF NOT SHOWN ON THE PLANS, TO THE LIMITS ESTABLISHED BY THE CITY OF NORTH LAS VEGAS TRAFFIC ENGINEER.

C. MODIFICATIONS AND CLARIFICATIONS TO THESE STANDARDS ARE NOTED BELOW.

- 1. THE CONTRACTOR SHALL MAKE A PROJECT SITE VISIT WITH PLANS-IN-HAND PRIOR TO CONSTRUCTION TO CONFIRM PROJECT CONSTRUCTION, AND SHALL IMMEDIATELY NOTIFY THE ENGINEER OF ANY DISCREPANCIES OR CONFLICTS THAT MAY BE OBSERVED.
2. INFORMATION NOTED ON THE PLANS CONCERNING THE EXISTENCE AND LOCATION OF EXISTING WET UNDERGROUND UTILITIES AND OTHER UNDERGROUND STRUCTURES WERE OBTAINED BY A SEARCH OF AVAILABLE RECORDS, THE CITY OF NORTH LAS VEGAS, PROFESSIONAL, AND OWNER MAKE NO ASSURANCES CONCERNING THE ACCURACY OF SUCH INFORMATION. THE CONTRACTOR SHALL EXERCISE CAUTION AND USE AVAILABLE CONSTRUCTION TECHNIQUES TO DETERMINE THE ACTUAL LOCATION OF PROTECTION FOR ALL UNDERGROUND UTILITIES WHETHER OR NOT THEY ARE SHOWN ON THE PLANS. AT A MINIMUM, THE CONTRACTOR SHALL:
CALL BEFORE YOU DIG 1-800-227-2600
CALL BEFORE YOU OVERHEAD 1-702-227-2329
3. THE CONTRACTOR SHALL BE RESPONSIBLE FOR OBTAINING ALL PROJECT PERMITS AND COMPLYING WITH ALL TERMS AND CONDITIONS IMPOSED BY THE PERMITTING AGENCIES, AGENCIES OTHER THAN THE NORTH LAS VEGAS PUBLIC WORKS DEPARTMENT THAT MAY HAVE JURISDICTION OR REGULATORY AUTHORITY CONCERNING THE PROJECT INCLUDE:
CITY OF NORTH LAS VEGAS BUILDING DEPARTMENT
CLARK COUNTY HEALTH DISTRICT - DIVISION OF AIR QUALITY MANAGEMENT
NEVADA DEPARTMENT OF TRANSPORTATION
NEVADA DEPARTMENT OF ENVIRONMENTAL PROTECTION
US ARMY CORPS OF ENGINEERS
NEVADA DIVISION OF WATER RESOURCES
4. THE CONTRACTOR SHALL PROVIDE AT LEAST SEVENTY-TWO (72) HOURS NOTICE TO EACH OF THE FOLLOWING AGENCIES CONFIRMING THE SCHEDULED START OF CONSTRUCTION:
CITY OF NORTH LAS VEGAS CONSTRUCTION SERVICES (702)390-4407
COX COMMUNICATION (702)385-3644
NV ENERGY (800)227-2600
CENTURY LINK (702)261-6004
SOUTHWEST GAS CORPORATION (702)651-2111

5. THE DEVELOPER/CONTRACTOR IS RESPONSIBLE FOR THE INSTALLATION OF MISSING SURVEY MONUMENTS AND REPLACEMENT OF ALL EXISTING SURVEY MONUMENTS DESTROYED, DAMAGED OR DISTURBED DURING CONSTRUCTION. THE RECORD INFORMATION ON THE RECORD IMPROVEMENT PLANS, SAID WORK SHALL BE DONE ONLY BY A NEVADA PROFESSIONAL LAND SURVEYOR IN ACCORDANCE WITH THE UNIFORM STANDARD DRAWINGS - CLARK COUNTY AREA, PRIOR TO RELEASE OF THE PROJECTS SURVEY/NO. THE DEVELOPER/CONTRACTOR WILL BE REQUIRED TO PREPARE A POST CONSTRUCTION RECORD OF SURVEY IN ACCORDANCE WITH NEVADA REVISED STATUTES 625.320 OF ALL SURVEY MONUMENTS SET. A PRELIMINARY COPY OF THE POST CONSTRUCTION RECORD OF SURVEY SHALL BE SUPPLIED TO THE CITY OF NORTH LAS VEGAS SURVEY DEPARTMENT FOR APPROVAL PRIOR TO RECORDATION. ALL ACTIVITIES ASSOCIATED WITH THE INSTALLATION AND REPLACEMENT OF MONUMENTS AND PREPARATION AND RECORDING OF MAPPING WILL BE AT NO COST TO THE CITY OF NORTH LAS VEGAS, IF PRIOR TO THE CITY OF NORTH LAS VEGAS REQUIRED SURVEY MONUMENTS HAVE BEEN CONFIRMED AS EXISTING AND DOCUMENTED ON THE RECORD IMPROVEMENT PLANS, AND CONFIRMATION IS PROVIDED THAT THE SURVEY MONUMENTS HAVE NOT BEEN DISTURBED, DAMAGED OR DESTROYED POST CONSTRUCTION. THE REQUIREMENT FOR THE POST CONSTRUCTION RECORD OF SURVEY SHALL BE WAIVED BY THE CITY SURVEYOR.

6. THE CONTRACTOR SHALL EXERCISE CAUTION AND USE CONSTRUCTION TECHNIQUES TO PROTECT AND PRESERVE EXISTING PUBLIC AND PRIVATE FEATURES LOCATED IN CLOSE PROXIMITY TO OR ADJUTING IMPROVEMENTS SHOWN ON THESE PLANS. RESTORATION OF DAMAGED FEATURES SHALL BE ACCOMPLISHED BY THE CONTRACTOR AT THE CONTRACTOR'S EXPENSE TO THE SATISFACTION OF THE CITY OF NORTH LAS VEGAS REPRESENTATIVE.

7. THE LOCATION OF ALL SAWCUT LINES FOR THE PROJECT MAY BE DETERMINED BY THE CITY OF NORTH LAS VEGAS IF THE LOCATION IS NOT CLEARLY SHOWN ON THE PLANS OR IF EXISTING CONDITIONS REQUIRE ADJUSTMENT TO THE LOCATION SHOWN ON THE PLANS.

8. THE CONTRACTOR SHALL COOPERATE AND COORDINATE WITH THE CITY OF NORTH LAS VEGAS REPRESENTATIVE IN PROVIDING ACCESS AND EGRESS TO THE PROPERTIES, AND SHALL PROTECT SUCH PROPERTIES FROM CITY OF NORTH LAS VEGAS PROJECT RELATED STORM WATER AND NUISANCE RUNOFF BY PROVIDING TEMPORARY POSITIVE DRAINAGE CONTROL.

9. PLANTMIX BITUMINOUS SHALL BE FINISHED TO A HEIGHT OF BETWEEN 3/8 INCHES AND 5/8 INCHES ABOVE THE LIP OF CURB GUTTERS AND VALLEY GUTTERS.
10. TO SEAL SURFACE CRACKS TO PLANTMIX BITUMINOUS SURFACES AFTER ALL CORRECTIONS AND ADJUSTMENTS HAVE BEEN MADE.

11. TYPE V CEMENT SHALL BE USED FOR ALL OFF-SITE IMPROVEMENTS AND THE MIX SHALL BE DESIGNED FOR SOLUBLE SULFATES IN THE SUBGRADE OF 1.5 PERCENT OR GREATER BASED ON SUBGRADE MATERIAL SAMPLING AND TESTING. ALL MIX DESIGNS SHALL BE PROJECT SPECIFIC AND APPROVED BY THE CITY OF NORTH LAS VEGAS REPRESENTATIVE PRIOR TO PLACEMENTS.

12. ALL MANHOLES, VALVE BOXES, JUNCTION STRUCTURES AND CLEANOUTS THAT ARE LOCATED WITHIN THE ROADWAY LIMITS SHALL BE CONSTRUCTED TO, AND PLATED AT SUBGRADE LEVEL UNTIL SUCH TIME AS THE AGGREGATE BASE AND PLANTMIX BITUMINOUS SURFACE HAS BEEN COMPLETED. THEREAFTER, THESE ITEMS SHALL BE ADJUSTED TO FINISH GRADE.
13. UTILITY BOXES AND VAULTS LOCATED IN THE SIDEWALK AREA ARE TO BE CONSTRUCTED TO THE FINISH GRADE. SIDEWALK ELEVATION SHALL BE CONSISTENT WITH THE ELEVATION SHOWN ON THE STANDARD CONCRETE CITY OF NORTH LAS VEGAS SIDEWALK EVEN IF THE CONCRETE SIDEWALK CONSTRUCTION IS DEFERRED TO A FUTURE DATE.

14. THE CONTRACTOR SHALL PROVIDE REASONABLE ACCOMMODATIONS FOR CITY OF NORTH LAS VEGAS PERSONNEL TO OBTAIN GPS/GIS DATA ON ALL UNDERGROUND UTILITIES AND

INFRASTRUCTURE.

15. ALL OFF-SITE IMPROVEMENT SUBGRADE MUST BE CERTIFIED BY THE GEOTECHNICAL ENGINEER OF RECORD.

III. STANDARD SPECIFICATION AND STANDARD DRAWINGS FOR WATER LINE CONSTRUCTION

A. ALL WATER IMPROVEMENTS SHOWN ON THESE CONSTRUCTION DRAWINGS SHALL CONFORM TO THE STANDARDS DESCRIBED BELOW AND IN ORDER OF PRECEDENCE SHOWN.

- 1. CITY OF NORTH LAS VEGAS MUNICIPAL WATER SERVICE DISTRICT SERVICE RULES AND REGULATIONS; LATEST EDITION.
2. "UNIFORM DESIGN AND CONSTRUCTION STANDARDS FOR WATER DISTRIBUTION SYSTEMS, CLARK COUNTY NEVADA," LATEST EDITION AND CITY OF NORTH LAS VEGAS ADDENDUM.
3. "UNIFORM STANDARD SPECIFICATION FOR PUBLIC WORKS CONSTRUCTION OFF-SITE IMPROVEMENTS, CLARK COUNTY AREA, NEVADA," LATEST EDITION.

B. EXCEPTIONS TO THESE STANDARDS ARE NOTED BELOW.

- 1. NO WATER MAIN MAY BE SHUT DOWN TO MAKE CONNECTIONS WITHOUT PRIOR APPROVAL OF THE CITY OF NORTH LAS VEGAS REPRESENTATIVE.
2. MATERIALS USED FOR WATER DISTRIBUTION FACILITIES SHALL BE INCLUDED ON THE "CITY OF NORTH LAS VEGAS APPROVED MATERIALS LIST," LATEST REVISION, OR SPECIFICALLY IDENTIFIED AND APPROVED ON THESE PLANS.
3. ALL WATER METERS TWO (2) INCHES AND SMALLER SHALL BE INSTALLED BY THE CITY OF NORTH LAS VEGAS. NOTE THAT ALL LOCATIONS MUST BE CLEARLY IDENTIFIED AND MARKED AT THE SITE. THE SERVICE LINES, LATERALS, METER BOXES AND SIDEWALKS OR COLLARS MUST ALL BE INSTALLED AND SET AT GRADE OR THE METER SHALL NOT BE SET.
4. THE CITY OF NORTH LAS VEGAS TRENCH BACKFILL POLICY, DATED AUGUST 15, 1996, SHALL BE ADHERED TO FOR THIS PROJECT.

C. MODIFICATION AND CLARIFICATION TO THESE STANDARDS ARE AS NOTED BELOW.

- 1. WATER METERING REQUIREMENTS FOR NEW DEVELOPMENT:
a) SEPARATE DOMESTIC AND FIRE SERVICES (WHERE APPLICABLE) ARE REQUIRED FOR EACH DWELLING UNIT, PUBLIC, QUASI-PUBLIC, COMMERCIAL, AND/OR INDUSTRIAL OCCUPANCY LOCATED ON A SINGLE PARCEL OR LOT.
b) IN THE EVENT THAT A BUILDING WITHIN AN INDUSTRIAL OR COMMERCIAL SUBDIVISION IS DIVIDED, SEPARATE DOMESTIC SERVICES ARE REQUIRED FOR EACH UNIT.
c) EACH PARCEL OR LOT OF A COMMERCIAL OR RESIDENTIAL SUBDIVISION WILL HAVE A MINIMUM OF ONE (1) METERED DOMESTIC SERVICE. WHEN A FIRE SERVICE IS REQUIRED, EACH PARCEL OR LOT WILL HAVE A MINIMUM OF ONE (1) FIRE SERVICE. THE CITY, AT ITS OPTION, MAY ALLOW A COMBINAL FIRE SERVICE PROVIDED THAT THE PROPERTY OWNERS FIRST ESTABLISH A PROPERTY MANAGEMENT ASSOCIATION WHICH ACCEPTS RESPONSIBILITY FOR THE PAYMENT OF WATER BILLS AND THE MAINTENANCE AND OPERATION OF THE FIRE LINES AND THE BACKFLOW PREVENTION ASSEMBLY.
2. FIRE AND DOMESTIC WATER SERVICES AS APPROVED ON THIS PLAN, ARE INTENDED SPECIFICALLY FOR THE LOT AND USE SHOWN, AND ARE NOT INTENDED TO SERVE ADDITIONAL PARCELS OR STRUCTURES WHICH MAY BE CREATED IN THE FUTURE. IN THE EVENT THAT THE PARCELS AND/OR LOTS SHOWN ON THIS PLAN ARE FURTHER DIVIDED TO CREATE ADDITIONAL PARCELS OR LOTS, THE OWNER IS REQUIRED TO PROVIDE SEPARATE FIRE AND DOMESTIC WATER SERVICES TO EACH PARCEL AND TO PUBLIC FIRE HYDRANTS SHALL NOT BE MADE FOR DOMESTIC AND/OR PRIVATE FIRE SERVICE.
4. ALL SERVICE LATERALS TWO (2) INCHES AND SMALLER SHALL BE COPPER TUBING WITH APPROVED SERVICE SADDLES, CORPORATION STOPS AND ANGLE METER STOPS SHALL BE THE SAME SIZE AS THE SERVICE LATERAL. ANGLE METER STOPS AND METER SHALL BE CENTERED IN METER THE BOX.
5. UJACS PLATES NO. 1 AND NO. 3, 3/8 INCH NOTE TO READ "COUPLINGS ARE NOT ALLOWED BETWEEN THE CORPORATION STOP AND THE ANGLE METER.
6. ALL METERS TO BE INSTALLED IN THE CITY OF NORTH LAS VEGAS WATER SYSTEM, INCLUDING CODAS MUST BE COMPATIBLE WITH THE SENSUS ARM PROTOCOL (A.K.A. INVENYS) AND MUST BE INSTALLED WITH THE ENCODED REGISTER METERS THAT ARE FULLY COMPATIBLE ARE.

D. MODIFICATION AND CLARIFICATION TO THESE STANDARDS ARE AS NOTED BELOW.

- 1. SINGLE PIPE MATERIAL SHALL BE USED THROUGHOUT THE PROJECT UNLESS OTHERWISE APPROVED BY THE CITY OF NORTH LAS VEGAS REPRESENTATIVE.
2. THE ON-SITE WATER LINES AND APPURTENANCES ARE PRIVATE FACILITIES NOT TO BE OPERATED OR MAINTAINED BY THE CITY OF NORTH LAS VEGAS, UNLESS OTHERWISE SPECIFIED ON CIVIL IMPROVEMENTS PLANS.
11. ALL VALVES WILL BE LOCATED OUTSIDE OF DRIVEWAYS, VALLEY GUTTERS, AND CURB GUTTERS.
14. A MINIMUM OF TWO (2) VALVES SHALL BE LOCATED AT EVERY MAINLINE TEE, OR THREE (3) VALVES AT EVERY MAINLINE CROSS.
15. ALL NEW FIRE HYDRANTS SHALL HAVE A 5-1/4 INCH VALVE OPENING.

16. THE CONTRACTOR SHALL BE RESPONSIBLE TO OBTAIN A VALID STATE OF NEVADA RECOGNIZED C-2 ELECTRICAL CONTRACTOR'S LICENSE. CONTRACTOR MUST ALSO HOLD A VALID ISA ROADWAY LIGHTING CERTIFICATION.

IV. STANDARD SPECIFICATIONS AND STANDARD DRAWINGS FOR SEWER LINE CONSTRUCTION

A. ALL SEWER LINES (WASTEWATER COLLECTION SYSTEMS) SHOWN ON THESE CONSTRUCTION DRAWINGS SHALL CONFORM TO THE STANDARDS DESCRIBED BELOW, AND IN ACCORDANCE WITH THE PRECEDENT SHOWN.

- 1. DESIGN AND CONSTRUCTION STANDARDS FOR WASTEWATER COLLECTION SYSTEMS, SOUTHERN NEVADA, LATEST EDITION AND CITY OF NORTH LAS VEGAS ADDENDUM.
2. "UNIFORM STANDARD SPECIFICATIONS FOR PUBLIC WORKS CONSTRUCTION OFF-SITE IMPROVEMENTS, CLARK COUNTY AREA, NEVADA," LATEST EDITION.

B. EXCEPTIONS TO THESE STANDARDS ARE NOTED BELOW.

- 1. MATERIALS USED FOR WASTEWATER COLLECTION SYSTEMS SHALL BE INCLUDED IN THE CITY OF NORTH LAS VEGAS APPROVED MATERIALS LIST, LATEST EDITION, OR SPECIFICALLY IDENTIFIED AND APPROVED ON THESE PLANS.
2. THE CITY OF NORTH LAS VEGAS TRENCH BACKFILL POLICY, DATED AUGUST 15, 1996 SHALL BE ADHERED TO FOR THIS PROJECT.
3. THE CONTRACTOR SHALL INSCRIBE "3", 3-INCHES IN HEIGHT, INTO THE CURB AT THE POINT WHERE THE SEWER LATERAL ENTERS EACH SUBDIVISION LOT OR PRIVATE LAND PARCEL.

C. MODIFICATIONS AND CLARIFICATION TO THESE STANDARDS ARE NOTED BELOW.

- 1. ALL SANITARY SEWER MANHOLE BASES FOR NEW PIPE MUST BE PRECAST PER DESIGN AND CONSTRUCTION STANDARDS FOR WASTEWATER COLLECTION SYSTEMS PLDS-1A, 1B AND 9.
2. LIMITS OF ASPHALT PATCHES TO BE DETERMINED IN THE FIELD BY A CITY OF NORTH LAS VEGAS INSPECTOR. PATCHES WILL BE A MINIMUM OF TWELVE (12)-FEET, MACHINE REPLACED.
3. THE ON-SITE SEWER LINES AND APPURTENANCES ARE PRIVATE FACILITIES NOT TO BE OPERATED

OR MAINTAINED BY THE CITY OF NORTH LAS VEGAS, UNLESS OTHERWISE SPECIFIED ON CIVIL IMPROVEMENT PLANS.

4. SEWER SERVICES AS APPROVED ON THIS PLAN, ARE INTENDED SPECIFICALLY FOR THE LOT AND USE SHOWN, AND ARE NOT INTENDED TO SERVE ADDITIONAL PARCELS OR STRUCTURES WHICH MAY BE CREATED IN THE FUTURE. IN THE EVENT THAT THE PARCELS AND/OR LOTS SHOWN ON THIS PLAN ARE FURTHER DIVIDED TO CREATE ADDITIONAL PARCELS OR LOTS, THE OWNER IS REQUIRED TO PROVIDE SEPARATE SEWER SERVICES TO EACH.

5. TO SCHEDULE UTILITY INSPECTIONS, PLEASE EMAIL UTIL-INS@CITYOFNORTHLASVEGAS.COM. UTILITY INSPECTION REQUESTS MUST BE RECEIVED BY 2:00 P.M. FOR INSPECTIONS TO OCCUR THE FOLLOWING BUSINESS DAY (MONDAY THROUGH FRIDAY).
27. TREES OR LANDSCAPING THAT OBSCURES THE VIEW OF A STOP SIGN SHALL BE INSTALLED WITHIN FEET OF AN INTERSECTION.
28. EXTRUDED ALUMINUM BRACKETS SHALL BE USED FOR STREET NAME SIGN INSTALLATION ON STREET LIGHT POLES. CAST ALUMINUM BRACKETS SHALL NOT BE PERMITTED.

29. RECTANGULAR RAPID FLASHING BEACONS SHALL BE CARMANIAN #5C315-6R APPROVED EQUAL. THE SYSTEM SHALL BE POWERED EITHER BY 120 VOLTS OR 12 VOLTS AS PER PLAN. THE 12 VOLT SYSTEM SHALL INCLUDE A 36-AMP BATTERY ENCLOSED IN A RAW ALUMINUM TYPE 3R CABINET AND A 50-WATT SOLAR PANEL. ALL INSTALLATIONS SHALL INCLUDE ADA COMPLIANT PUSHBUTTONS WITH LED AND TWO TONE AUDIBLE CONFIRMATION PUSH BUTTONS, LED HOUSINGS AND LEDS SHALL BE YELLOW IN COLOR.

30. SCHOOL FLASHERS SHALL BE CONTROLLED BY RTC MANUFACTURING #AP-22 TIME CLOCK AND #MCM CELLULAR MODEM WITH A 5 YEAR DATA PLAN. THE SYSTEM SHALL BE POWERED EITHER BY 120 VOLTS OR 12 VOLTS AS PER PLAN. 12 VOLT SYSTEMS SHALL INCLUDE A 12-VOLT, 36-AMP HOUR, GEL-CELL BATTERY AND A GUARDIAN SERIES MONITOR ENCLOSED IN A RAW ALUMINUM TYPE 3R CABINET WITH A 50-WATT SOLAR PANEL.

31. FLASHING LED ENHANCED STOP SIGNS SHALL BE TAPCO "BLUNKERSTOP" (R1-1) OR APPROVED EQUAL. EACH SIGN SHALL HAVE AN ANTI-GRAFFITI OVERLAY (M 1180) AND CONTAIN 8 CONTINUOUSLY FLASHING INTEGRATED RED LEDS POWERED BY A 12 VOLT SOLAR PANEL AND BATTERY SYSTEM.

FIBER OPTIC CONDUIT AND PULL BOXES

32. FIBER OPTIC CONDUIT, SCHEDULE 40 PVC, IS REQUIRED ON ALL RIGHTS-OF-WAY 80 FEET AND GREATER. SIZE SHALL BE 4 INCHES, UNLESS OTHERWISE SPECIFIED.
33. PULL BOXES AND COVERS SHALL BE MADE OF REINFORCED POLYMER CONCRETE MATERIALS. PULL BOX COVERS SHALL BE CLEANED, BLOWN OUT, MANUELED, AND SHALL HAVE A 6 AWG THW STRAIGHT GROUND BOND ENTRY AND EXITS.

34. CONSTRUCTION OF PULL BOXES SHALL BE 450 FEET, WITH A MAXIMUM OF 500 FEET ALLOWABLE IF SPACING LIMITS ARE LESS THAN 450 FEET AND ONE PULL BOX IS BEING INSTALLED.
35. ALL FIBER CONDUITS AT THE LIMITS OF CONSTRUCTION SHALL BE STUBBED AND CAPPED 5 FEET PAST THE PROPERTY LINE OR CONNECTED TO EXISTING FIBER CONDUIT.

36. ALL CONDUITS SHALL BE CLEANED, BLOWN OUT, MANUELED, AND SHALL HAVE A 6 AWG THW GREEN TRACE WIRE INSTALLED. WIRE SHALL BE SECURED AT BOTH ENDS AND CAPPED.
37. CONDUIT AND PULL BOXES AT ALL INTERSECTIONS WITH 80 FEET/70 FEET RIGHTS-OF-WAY AND GREATER SHALL BE CONSTRUCTED IN ACCORDANCE WITH CLARK COUNTY UNIFORM STANDARD DRAWINGS 885 & 765. THE FUTURE SIGNAL POLE FOUNDATIONS SHALL BE TYPE I AND LOCATED CENTER OF RADIUS IN ACCORDANCE WITH CLARK COUNTY UNIFORM STANDARD DRAWING 885, UNLESS OTHERWISE NOTED.

GENERAL STREETLIGHT NOTES

- 1. STREETLIGHTS SHALL BE LIGHT EMITTING DIODE (LED) PER UNIFORM STANDARD DRAWINGS FOR CLARK COUNTY AREA, SUPPLEMENTAL DRAWING, STREETLIGHT LOCATION LED_1, STANDARDS AND GENERAL NOTES, DWG. NO. 300.53, AND PER CITY OF NORTH LAS VEGAS APPROVED PRODUCTS LIST WITH 7-PIN RECEPTACLE AND SHORTING CAP FOR ROADWAY FIXTURES AND PHOTOCELL FOR INTERSECTION AREAS.
2. LED CHARACTERISTICS SHALL CONFORM TO THE PROVISIONS OF THE CLARK COUNTY UNIFORM STANDARDS SPECIFICATIONS 623.02.03. WATTAGE SHALL BE AS SHOWN ON THE PLANS. LEDS (100 WATT HPS, 150 WATT HPS, & 250 WATT HPS COMPAREABLE) SHALL BE THE LATEST GE EVOLVE WITH 7 PIN RECEPTACLE AND SHORTING CAP OR APPROVED EQUAL BY THE TRAFFIC OPERATIONS SUPERVISOR.
3. TRAFFIC SIGNAL LUMINAIRE LIGHTING SHALL BE LED (400 WATT HPS COMPAREABLE) AND SHALL BE THE LATEST HOLLOWANE FIXTURE (OR APPROVED EQUAL BY THE TRAFFIC OPERATIONS SUPERVISOR) WITH 7-PIN RECEPTACLE AND TWIST LOCK PHOTOCELL.

GENERAL TRAFFIC NOTES

1. CONTRACTOR SHALL REFERENCE THE LATEST RTC UNIFORM STANDARD SPECIFICATIONS & STANDARDS FOR CLARK COUNTY AREA, SUPPLEMENTAL DRAWING, STREETLIGHT LOCATION LED_1, STANDARDS AND GENERAL NOTES, DWG. NO. 300.53, AND PER CITY OF NORTH LAS VEGAS APPROVED PRODUCTS LIST WITH 7-PIN RECEPTACLE AND SHORTING CAP FOR ROADWAY FIXTURES AND PHOTOCELL FOR INTERSECTION AREAS.
2. THE CONTRACTOR SHALL SECURE A PERMIT FOR ANY OFF-SITE CONSTRUCTION.
3. THE CONTRACTOR'S OPERATIONS SHALL NOT TRESPASS BEYOND THE PROJECT PROPERTY LINES UNLESS A PERMIT OR WRITTEN AUTHORIZATION HAS BEEN OBTAINED FROM THE PROPERTY OWNERS) INVOLVED. COPIES OF SUCH WRITTEN AUTHORIZATION SHALL BE FURNISHED TO THE CITY ENGINEER AND THE TRAFFIC OPERATIONS SUPERVISOR PRIOR TO START OF CONSTRUCTION.
4. THE CITY OF NORTH LAS VEGAS CONSTRUCTION SERVICES SHALL BE NOTIFIED ONE (1) WORKING DAY BEFORE ANY ON-SITE CONSTRUCTION WORK BEGINS.
5. AN APPROVED GRADING AND DRAINAGE PLAN SHALL BE ON THE JOB SITE AT ALL TIMES. DEVIATIONS FROM THE APPROVED PLAN WILL REQUIRE SUBMITTAL OF A FORMAL REVISED PLAN FOR APPROVAL.

GENERAL STREETLIGHT NOTES

- 1. STREETLIGHTS SHALL BE LIGHT EMITTING DIODE (LED) PER UNIFORM STANDARD DRAWINGS FOR CLARK COUNTY AREA, SUPPLEMENTAL DRAWING, STREETLIGHT LOCATION LED_1, STANDARDS AND GENERAL NOTES, DWG. NO. 300.53, AND PER CITY OF NORTH LAS VEGAS APPROVED PRODUCTS LIST WITH 7-PIN RECEPTACLE AND SHORTING CAP FOR ROADWAY FIXTURES AND PHOTOCELL FOR INTERSECTION AREAS.
2. LED CHARACTERISTICS SHALL CONFORM TO THE PROVISIONS OF THE CLARK COUNTY UNIFORM STANDARDS SPECIFICATIONS 623.02.03. WATTAGE SHALL BE AS SHOWN ON THE PLANS. LEDS (100 WATT HPS, 150 WATT HPS, & 250 WATT HPS COMPAREABLE) SHALL BE THE LATEST GE EVOLVE WITH 7 PIN RECEPTACLE AND SHORTING CAP OR APPROVED EQUAL BY THE TRAFFIC OPERATIONS SUPERVISOR.
3. TRAFFIC SIGNAL LUMINAIRE LIGHTING SHALL BE LED (400 WATT HPS COMPAREABLE) AND SHALL BE THE LATEST HOLLOWANE FIXTURE (OR APPROVED EQUAL BY THE TRAFFIC OPERATIONS SUPERVISOR) WITH 7-PIN RECEPTACLE AND TWIST LOCK PHOTOCELL.

4. TERMINATING CONDUIT SHALL END IN A PULL BOX WITH PULL STRING. ALL CONDUITS AT LIMITS OF CONSTRUCTION SHALL BE CLEANED, BLOWN OUT, MANUELED, AND SHALL HAVE A 6 AWG THW GREEN TRACE WIRE INSTALLED. WIRE SHALL BE SECURED AT BOTH ENDS AND CAPPED.
5. ALL STREET LIGHTING CONDUITS SHALL BE 2 INCH PVC SCHEDULE 40 AND SHALL HAVE A MINIMUM OF 24 INCHES OF COVER IN ALL AREAS.

6. ALL CONDUITS FOR FUTURE USE SHALL BE BLOWN OUT WITH COMPRESSED AIR, CLEANED AND PROVIDED WITH A 200 POUND PULL LINE AND A DETECTABLE MULE TAPE W/ TRACER. ALL ENDS OF CONDUITS SHALL BE CAPPED.
7. ALL PULL BOXES AND COVERS SHALL BE MADE OF REINFORCED POLYMER CONCRETE MATERIALS.
8. ALL PULL BOXES SHALL BE # 3/8, UNLESS OTHERWISE NOTED.

9. PULL BOX COVERS SHALL BE STAMPED TO SHOW THE PHRASE "STREET LIGHT".
10. PULL BOX COVERS SHALL BE CLEANED, BLOWN OUT, MANUELED, AND AN ANTI-THEFT LOCK MECHANISM SHALL BE PROVIDED BY THE CITY OF NORTH LAS VEGAS TRAFFIC OPERATIONS SUPERVISOR BEFORE INSTALLATION.

11. ALL PULL BOXES MUST HAVE A CONCRETE COLLAR.
12. SERVICE PANELS SHALL BE PER CLARK COUNTY UNIFORM STANDARD DRAWING NO. 730. THE CITY OF NORTH LAS VEGAS TRAFFIC OPERATIONS SUPERVISOR SHALL BE NOTIFIED 2 WORKING DAYS PRIOR TO REVIEW. PERMITS FOR TEMPORARY TRAFFIC CONTROL WILL ONLY BE GRANTED AFTER THE CONTRACTOR HAS MADE PAYMENT OF ASSOCIATED FEES.

13. TEMPORARY TRAFFIC CONTROL PLANS SHALL NOT BE IMPLEMENTED UNTIL A PERMIT HAS BEEN GRANTED BY THE CITY OF NORTH LAS VEGAS PUBLIC WORKS DEPARTMENT. TEMPORARY TRAFFIC CONTROL PLANS SHALL BE SUBMITTED TO THE CITY OF NORTH LAS VEGAS PUBLIC WORKS DEPARTMENT FOR REVIEW. PERMITS FOR TEMPORARY TRAFFIC CONTROL WILL ONLY BE GRANTED AFTER THE CONTRACTOR HAS MADE PAYMENT OF ASSOCIATED FEES.

14. ALL DEVELOPMENT PLANS SHALL HAVE A MASTER STREET LIGHTING AND TRAFFIC CONTROL (SIGNING AND STRIPING) PLAN SHEET CONTAINED IN THE PLAN SET WHICH INCLUDES ALL UNITS AND WORK ZONE PHASES AND TRAFFIC CONTROL DEVICES.
15. ALL WORK PERFORMED ON ANY COMPONENT OF ANY ELECTRICAL SYSTEM LIGHTING SHALL BE SUPERVISED BY AN ELECTRICIAN THAT IS CERTIFIED AS A JOURNEYMAN ELECTRICIAN. ALL WORK PERFORMED ON ANY COMPONENT OF A TRAFFIC SIGNAL SHALL BE SUPERVISED BY AN MISA LEVEL 2 TRAFFIC SIGNAL ELECTRICIAN THAT IS ALSO A CERTIFIED JOURNEYMAN ELECTRICIAN. THE CITY OF NORTH LAS VEGAS TRAFFIC ENGINEER SHALL HOLD A VALID STATE OF NEVADA RECOGNIZED C-2 ELECTRICAL CONTRACTOR'S LICENSE. CONTRACTOR MUST ALSO HOLD AN ISA ROADWAY LIGHTING CERTIFICATION.

16. THE CONTRACTOR SHALL OBTAIN APPROVAL OF ALL MATERIALS FROM THE TRAFFIC OPERATIONS SUPERVISOR PRIOR TO USE DURING THE SUBMITTAL PROCESS. ANY INSTALLED NON-APPROVED MATERIAL SHALL BE REMOVED AND REPLACED WITH THE APPROPRIATE MATERIAL AT NO EXPENSE TO THE CITY OF NORTH LAS VEGAS.

17. THE CONTRACTOR SHALL BE RESPONSIBLE FOR LOCATING AND PROTECTING ALL UNDERGROUND AND AERIAL UTILITIES AND CONSTRUCTION LIKELY TO BE AFFECTED BY THE WORK. THE LOCATION OF UNDERGROUND UTILITIES SHOWN ON THESE PLANS IS APPROXIMATE ONLY. ANY DAMAGE TO EXISTING UTILITIES SHALL BE THE RESPONSIBILITY OF THE CONTRACTOR AND SHALL BE REPAIRED PROMPTLY IN A MANNER SATISFACTORY TO THE UTILITY OWNER AT THE CONTRACTOR'S EXPENSE.

18. THE CONTRACTOR SHALL BE RESPONSIBLE FOR MAINTAINING ALL DETECTION LOOPS DURING THE ENTIRE COURSE OF CONSTRUCTION. IN THE EVENT THE LOOPS OR ANY ASSOCIATED ITEMS ARE DAMAGED OR OTHERWISE AFFECTED BY ANY MEANS RELATED TO THE PROJECT, THE CONTRACTOR SHALL REPLACE THE LOOPS AND ASSOCIATED ITEMS PER THE CITY OF NORTH LAS VEGAS' LATEST STANDARD AND WITH THE APPROVAL OF THE TRAFFIC OPERATIONS SUPERVISOR. IT IS THE CONTRACTOR'S RESPONSIBILITY TO VERIFY THE PRESENCE OF LOOPS PRIOR TO CONSTRUCTION. ALL DETECTION LOOP DAMAGE AND ANY ASSOCIATED ITEMS SHALL BE AT THE CONTRACTOR'S EXPENSE.

19. CONTRACTOR IS REQUIRED TO NOTIFY THE TRAFFIC SIGNAL OPERATIONS SUPERVISOR THROUGH THE RTC WEBSITE, NOTIFICATION OF ROADWAY NEAR TRAFFIC SIGNALS PAGE (HTTPS://WWW.RTCSV.COM/TRAFFIC-CAMS/ROADWORK-NOTIFICATIONS) WHEN THE WORK ZONE IS BETWEEN THE UTILITIES DEPARTMENT AND THE COMMERCIAL PROPERTY OWNERS; A MINIMUM OF SEVEN (7) WORKING DAYS PRIOR TO ANTICIPATED SHUTDOWN. THE COMMERCIAL OWNERS) SHALL HAVE THE ABILITY TO PROVIDE INPUT IN SCHEDULING SHUTDOWNS.

20. FOR RESIDENTIAL PROPERTIES, PROVIDE WRITTEN NOTIFICATION TO RESIDENTIAL PROPERTIES A MINIMUM OF 48 HOURS PRIOR TO ANTICIPATED SHUTDOWN.
4. WORKING DAYS ARE DEEMED TO BE MONDAY THROUGH THURSDAY FOR SHUTDOWN PURPOSES.
5. SHUTDOWNS ARE ANTICIPATED WORK. FINAL DECISIONS SHALL BE AT THE DISCRETION OF THE UTILITIES DEPARTMENT.

6. THE SHUTDOWN RELOCATION, AND/OR ADJUSTMENT OF WATER LINES SHALL BE AS APPROVED BY THE CITY OF NORTH LAS VEGAS UTILITIES DEPARTMENT. SHUTDOWNS CANNOT BE GUARANTEED BY THE DEPARTMENT. LINE STOPS OR "INSERT-A-VALVE" MAY BE REQUIRED TO COMPLETE THE WORK. AT THE CITY OF NORTH LAS VEGAS UTILITIES DEPARTMENT, CONTRACTOR SHALL BE RESPONSIBLE FOR ALL COSTS ASSOCIATED WITH THE WORK.

IV. STANDARD SPECIFICATIONS AND STANDARD DRAWINGS FOR SEWER LINE CONSTRUCTION

A. ALL SEWER LINES (WASTEWATER COLLECTION SYSTEMS) SHOWN ON THESE CONSTRUCTION DRAWINGS SHALL CONFORM TO THE STANDARDS DESCRIBED BELOW, AND IN ACCORDANCE WITH THE PRECEDENT SHOWN.

- 1. DESIGN AND CONSTRUCTION STANDARDS FOR WASTEWATER COLLECTION SYSTEMS, SOUTHERN NEVADA, LATEST EDITION AND CITY OF NORTH LAS VEGAS ADDENDUM.
2. "UNIFORM STANDARD SPECIFICATIONS FOR PUBLIC WORKS CONSTRUCTION OFF-SITE IMPROVEMENTS, CLARK COUNTY AREA, NEVADA," LATEST EDITION.

B. EXCEPTIONS TO THESE STANDARDS ARE NOTED BELOW.

- 1. MATERIALS USED FOR WASTEWATER COLLECTION SYSTEMS SHALL BE INCLUDED IN THE CITY OF NORTH LAS VEGAS APPROVED MATERIALS LIST, LATEST EDITION, OR SPECIFICALLY IDENTIFIED AND APPROVED ON THESE PLANS.
2. THE CITY OF NORTH LAS VEGAS TRENCH BACKFILL POLICY, DATED AUGUST 15, 1996 SHALL BE ADHERED TO FOR THIS PROJECT.
3. THE CONTRACTOR SHALL INSCRIBE "3", 3-INCHES IN HEIGHT, INTO THE CURB AT THE POINT WHERE THE SEWER LATERAL ENTERS EACH SUBDIVISION LOT OR PRIVATE LAND PARCEL.

C. MODIFICATIONS AND CLARIFICATION TO THESE STANDARDS ARE NOTED BELOW.

- 1. ALL SANITARY SEWER MANHOLE BASES FOR NEW PIPE MUST BE PRECAST PER DESIGN AND CONSTRUCTION STANDARDS FOR WASTEWATER COLLECTION SYSTEMS PLDS-1A, 1B AND 9.
2. LIMITS OF ASPHALT PATCHES TO BE DETERMINED IN THE FIELD BY A CITY OF NORTH LAS VEGAS INSPECTOR. PATCHES WILL BE A MINIMUM OF TWELVE (12)-FEET, MACHINE REPLACED.
3. THE ON-SITE SEWER LINES AND APPURTENANCES ARE PRIVATE FACILITIES NOT TO BE OPERATED

OR MAINTAINED BY THE CITY OF NORTH LAS VEGAS, UNLESS OTHERWISE SPECIFIED ON CIVIL IMPROVEMENT PLANS.

4. SEWER SERVICES AS APPROVED ON THIS PLAN, ARE INTENDED SPECIFICALLY FOR THE LOT AND USE SHOWN, AND ARE NOT INTENDED TO SERVE ADDITIONAL PARCELS OR STRUCTURES WHICH MAY BE CREATED IN THE FUTURE. IN THE EVENT THAT THE PARCELS AND/OR LOTS SHOWN ON THIS PLAN ARE FURTHER DIVIDED TO CREATE ADDITIONAL PARCELS OR LOTS, THE OWNER IS REQUIRED TO PROVIDE SEPARATE SEWER SERVICES TO EACH.

5. TO SCHEDULE UTILITY INSPECTIONS, PLEASE EMAIL UTIL-INS@CITYOFNORTHLASVEGAS.COM. UTILITY INSPECTION REQUESTS MUST BE RECEIVED BY 2:00 P.M. FOR INSPECTIONS TO OCCUR THE FOLLOWING BUSINESS DAY (MONDAY THROUGH FRIDAY).
27. TREES OR LANDSCAPING THAT OBSCURES THE VIEW OF A STOP SIGN SHALL BE INSTALLED WITHIN FEET OF AN INTERSECTION.
28. EXTRUDED ALUMINUM BRACKETS SHALL BE USED FOR STREET NAME SIGN INSTALLATION ON STREET LIGHT POLES. CAST ALUMINUM BRACKETS SHALL NOT BE PERMITTED.

29. RECTANGULAR RAPID FLASHING BEACONS SHALL BE CARMANIAN #5C315-6R APPROVED EQUAL. THE SYSTEM SHALL BE POWERED EITHER BY 120 VOLTS OR 12 VOLTS AS PER PLAN. THE 12 VOLT SYSTEM SHALL INCLUDE A 36-AMP BATTERY ENCLOSED IN A RAW ALUMINUM TYPE 3R CABINET AND A 50-WATT SOLAR PANEL. ALL INSTALLATIONS SHALL INCLUDE ADA COMPLIANT PUSHBUTTONS WITH LED AND TWO TONE AUDIBLE CONFIRMATION PUSH BUTTONS, LED HOUSINGS AND LEDS SHALL BE YELLOW IN COLOR.

30. SCHOOL FLASHERS SHALL BE CONTROLLED BY RTC MANUFACTURING #AP-22 TIME CLOCK AND #MCM CELLULAR MODEM WITH A 5 YEAR DATA PLAN. THE SYSTEM SHALL BE POWERED EITHER BY 120 VOLTS OR 12 VOLTS AS PER PLAN. 12 VOLT SYSTEMS SHALL INCLUDE A 12-VOLT, 36-AMP HOUR, GEL-CELL BATTERY AND A GUARDIAN SERIES MONITOR ENCLOSED IN A RAW ALUMINUM TYPE 3R CABINET WITH A 50-WATT SOLAR PANEL.

31. FLASHING LED ENHANCED STOP SIGNS SHALL BE TAPCO "BLUNKERSTOP" (R1-1) OR APPROVED EQUAL. EACH SIGN SHALL HAVE AN ANTI-GRAFFITI OVERLAY (M 1180) AND CONTAIN 8 CONTINUOUSLY FLASHING INTEGRATED RED LEDS POWERED BY A 12 VOLT SOLAR PANEL AND BATTERY SYSTEM.

FIBER OPTIC CONDUIT AND PULL BOXES

32. FIBER OPTIC CONDUIT, SCHEDULE 40 PVC, IS REQUIRED ON ALL RIGHTS-OF-WAY 80 FEET AND GREATER. SIZE SHALL BE 4 INCHES, UNLESS OTHERWISE SPECIFIED.
33. PULL BOXES AND COVERS SHALL BE MADE OF REINFORCED POLYMER CONCRETE MATERIALS. PULL BOX COVERS SHALL BE CLEANED, BLOWN OUT, MANUELED, AND SHALL HAVE A 6 AWG THW STRAIGHT GROUND BOND ENTRY AND EXITS.

34. CONSTRUCTION OF PULL BOXES SHALL BE 450 FEET, WITH A MAXIMUM OF 500 FEET ALLOWABLE IF SPACING LIMITS ARE LESS THAN 450 FEET AND ONE PULL BOX IS BEING INSTALLED.
35. ALL FIBER CONDUITS AT THE LIMITS OF CONSTRUCTION SHALL BE STUBBED AND CAPPED 5 FEET PAST THE PROPERTY LINE OR CONNECTED TO EXISTING FIBER CONDUIT.

36. ALL CONDUITS SHALL BE CLEANED, BLOWN OUT, MANUELED, AND SHALL HAVE A 6 AWG THW GREEN TRACE WIRE INSTALLED. WIRE SHALL BE SECURED AT BOTH ENDS AND CAPPED.
37. CONDUIT AND PULL BOXES AT ALL INTERSECTIONS WITH 80 FEET/70 FEET RIGHTS-OF-WAY AND GREATER SHALL BE CONSTRUCTED IN ACCORDANCE WITH CLARK COUNTY UNIFORM STANDARD DRAWINGS 885 & 765. THE FUTURE SIGNAL POLE FOUNDATIONS SHALL BE TYPE I AND LOCATED CENTER OF RADIUS IN ACCORDANCE WITH CLARK COUNTY UNIFORM STANDARD DRAWING 885, UNLESS OTHERWISE NOTED.

GENERAL STREETLIGHT NOTES

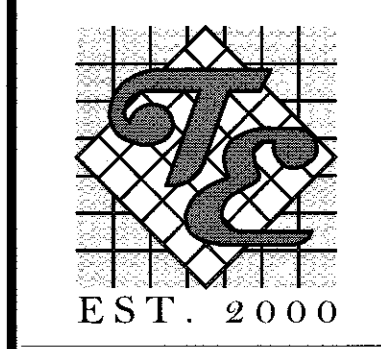
- 1. STREETLIGHTS SHALL BE LIGHT EMITTING DIODE (LED) PER UNIFORM STANDARD DRAWINGS FOR CLARK COUNTY AREA, SUPPLEMENTAL DRAWING, STREETLIGHT LOCATION LED_1, STANDARDS AND GENERAL NOTES, DWG. NO. 300.53, AND PER CITY OF NORTH LAS VEG

LAST PLOT: Jerr Dillen
 FILE NAME: S:\ACTIVE\FORESIGHT COMPANIES\FRC-20-03 - LAKE MEAD WEST SENIOR/ENRCS IPS/SHEET DWG/S\FRC03_SHT_C.DWG

QUANTITIES		
PAVING AND GRADING 2" ASPHALT	PUBLIC XX SY	PRIVATE
STORM DRAIN XX	PUBLIC XX SY	PRIVATE
WATER XX	PUBLIC XX SY	PRIVATE
SEWER XX	PUBLIC XX SY	PRIVATE
TRAFFIC XX	PUBLIC XX SY	PRIVATE

NO.	DESCRIPTION	REVISIONS	
		BY	DATE

FORESIGHT COMPANIES



EST. 2000
 TANEY ENGINEERING
 CIVIL ENGINEERING
 & LAND SURVEYING
 6030 S. JONES BLVD
 LAS VEGAS, NV 89118
 (702) 362-8844
 INFO@TANEYCORP.COM

ONLY UNDERGROUND UTILITY NOTE
 PRIOR TO THE INSTALLATION OF ANY SUBGRADE STREET IMPROVEMENTS, ALL REQUIRED UNDERGROUND UTILITIES (I.E. TELEPHONE, POWER, WATER, ETC.) LOCATED WITHIN PUBLIC RIGHTS OF WAY, SHALL BE EXTENDED A MINIMUM OF TEN (10) FEET BEYOND THE PROJECT BOUNDARY, OR AS OTHERWISE REQUIRED BY THE CONSTRUCTION SERVICES MANAGER.

FLOOD ZONE
 THIS PROJECT IS LOCATED IN FLOOD ZONE "X", AN AREA DETERMINED TO BE OUTSIDE OF THE 0.2% ANNUAL CHANCE FLOOD PLAIN PER FIRM PANEL 32003C2160F, REVISED DATE 11/16/2011.

EARTHWORK
 TOTAL FOR OVERALL DEVELOPMENT: 1724.16 CY CUT / 5353.48 CY FILL / 3629.33 CY NET (FILL)
 NOTE: THIS OPINION OF THE CUT AND FILL QUANTITIES IS PROVIDED AS REQUIRED BY THE GOVERNING ENTITY. THIS INFORMATION SHOULD NOT BE USED FOR BIDDING PURPOSES. ALL CONTRACTORS ARE RESPONSIBLE FOR THEIR OWN QUANTITIES. THESE TOTALS ARE RAW AND DO NOT ACCOUNT FOR SHRINKAGE AND SUBSIDENCE.

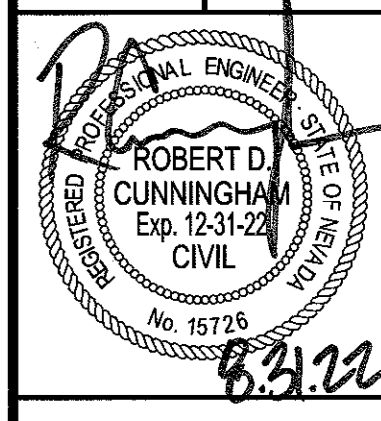
UTILITY DISCLAIMER
 EXISTING UTILITY LOCATIONS SHOWN HEREIN ARE APPROXIMATE ONLY. IT SHALL BE THE CONTRACTORS RESPONSIBILITY TO DETERMINE THE EXACT VERTICAL AND HORIZONTAL LOCATION OF ALL EXISTING UNDERGROUND UTILITIES PRIOR TO COMMENCING CONSTRUCTION. NO REPRESENTATION IS MADE THAT ALL EXISTING UTILITIES ARE SHOWN HEREON. THE ENGINEER ASSUMES NO RESPONSIBILITY FOR UTILITIES NOT SHOWN OR UTILITIES NOT SHOWN IN THEIR EXISTING LOCATIONS.

LEGAL DESCRIPTION
 LOT 1 OF THE PORTION OF THE SOUTH HALF (S 1/2) OF THE SOUTHWEST QUARTER (SW 1/4) OF THE NORTHWEST QUARTER (NW 1/4) OF SECTION 20, TOWNSHIP 20 SOUTH, RANGE 61 EAST, M.D.M. LYING EASTERLY OF THE EAST LINE OF LAKE MEAD COMMERCIAL PARK AS SHOWN IN THE OFFICE OF THE CLARK COUNTY, NEVADA RECORDER PARCEL MAP FILE 126, PAGE 89 OF PLATS.
 EXCEPTING THEREFROM THE FOLLOWING DESCRIBED PORTION OF SAID LAND AS CONVEYED BY THE CITY OF NORTH LAS VEGAS, A POLITICAL SUBDIVISION OF THE STATE OF NEVADA, PURSUANT TO THAT CERTAIN FINAL ORDER OF CONDEMNATION RECORDED MARCH 16, 1994 IN BOOK 940316 AS INSTRUMENT NO. 01506, OFFICIAL RECORDS, THAT PORTION OF THE SOUTH HALF (S 1/2) OF THE SOUTH HALF (S 1/2) OF THE NORTHWEST QUARTER (NW 1/4) OF SECTION 20, TOWNSHIP 20 SOUTH, RANGE 61 EAST, M.D.M., MORE PARTICULARLY DESCRIBED AS FOLLOWS:
 BEGINNING AT THE NORTHEAST CORNER OF THE WEST HALF (W 1/2) OF SAID SOUTH HALF (S 1/2) OF THE SOUTH HALF (S 1/2) OF THE NORTHWEST QUARTER (NW 1/4) AS SHOWN ON FILE 47, PAGE 1 OF SURVEYS, IN THE OFFICE OF THE COUNTY RECORDER OF CLARK COUNTY, NEVADA; THENCE SOUTH 89°23'51" WEST ALONG THE NORTH LINE THEREOF, 165.92 FEET; THENCE SOUTH 0°02'57" EAST, 13.22 FEET; THENCE SOUTH 87°36'04" EAST 166.07 FEET; THENCE NORTH 0°03'39" WEST, 21.91 FEET TO THE POINT OF BEGINNING.

BASIS OF BEARING
 N89°24'48"E
 BEING THE SOUTH LINE OF THE NORTHWEST QUARTER (NW 1/4) OF SECTION 20, TOWNSHIP 20 SOUTH, RANGE 61 EAST, M.D.M., CLARK COUNTY, NEVADA, ALSO BEING THE CENTERLINE OF CORAN LANE AS SHOWN IN THE FINAL MAP OF LAKE MEAD BUSINESS PARK, BOOK 91, PAGE 72 OF PLATS, OFFICIAL RECORDS OF CLARK COUNTY, NEVADA.

BENCHMARK
 CITY OF NORTH LAS VEGAS BENCHMARK 5LV01201W6
 RIVET AND 2" ROUND BRASS DISK, STAMPED CITY OF LAS VEGAS BM NO. 5LV0120W6, SET IN THE TOP OF CURB LOCATED APPROXIMATELY 1.5 FEET EAST OF THE SOUTHEAST EAST BCR AT THE INTERSECTION OF CORAN LN. AND FERRELL ST.
 ELEVATION: 644.29 METERS / 2113.81 FEET (NAVDS85_V2018)

LAKE MEAD WEST SENIOR
 MULTI FAMILY
 NOTES & QUANTITY SHEET



Avoid overhead power line contact, it's costly.

Call before you Overhead
1-702-227-2929

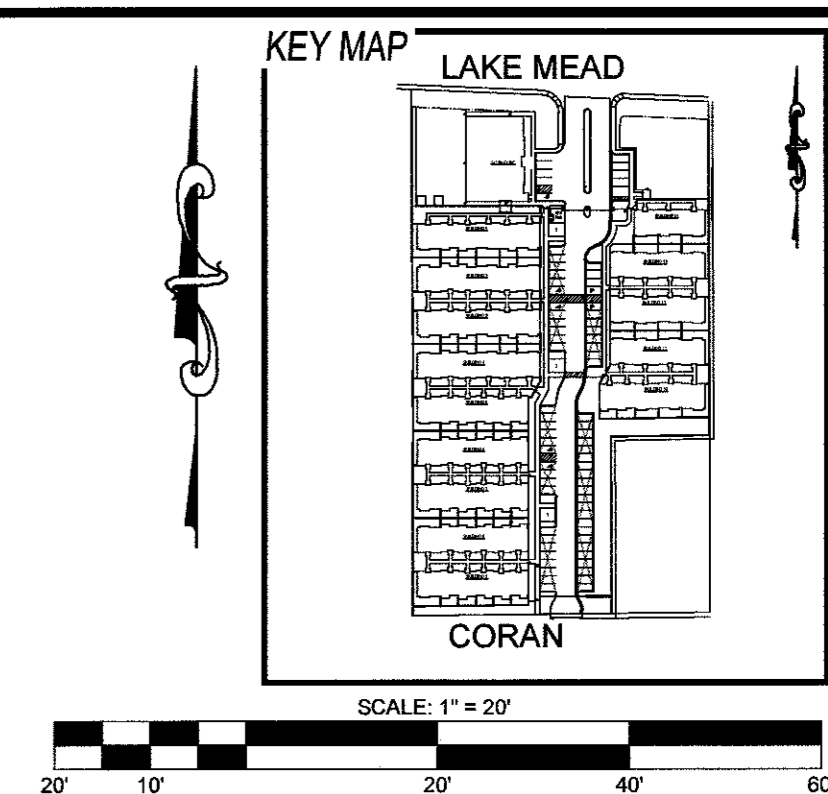
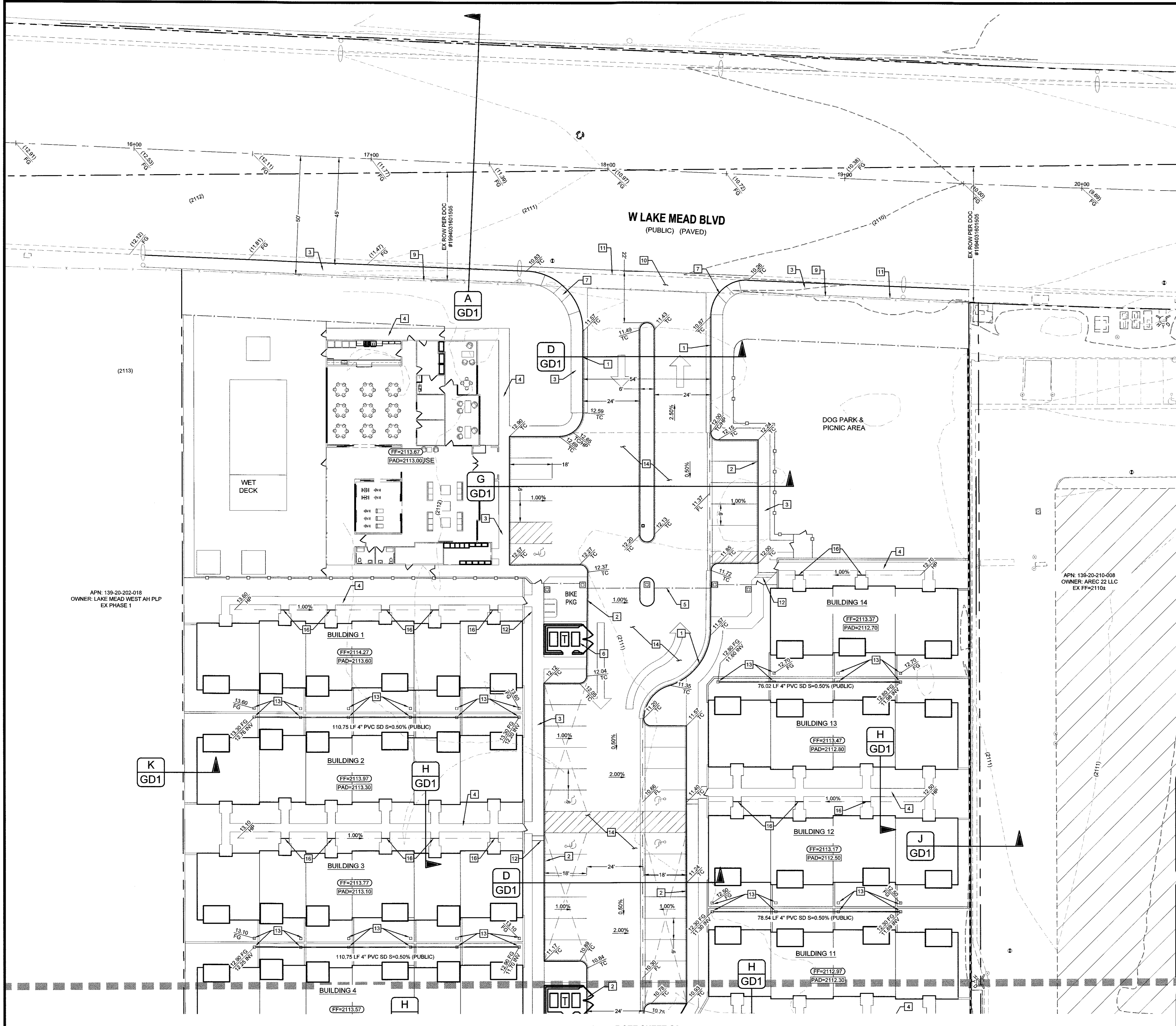
Call before you Dig
Avoid cutting underground utility lines, it's costly.

811
OR
1-800-642-2444

FAST
Call before you Dig
Underground
1-702-432-5300

DATE:	8/31/2022
SCALE:	N/A
JOB NO.:	FRC-20-003
DESIGNED BY:	EP
CHECKED BY:	RC
SHEET NAME:	C3
SHEET NUMBER:	3 OF 06
CNLY	0000000

LAST PLOT: John Dixon
 FILE NAME: S:\ACTIVE\FORESIGHT COMPANIES\FRC-20-003 - LAKE MEAD WEST SENIOR'S SHEET DWG\FRC003_SHT_0.DWG



- ### CONSTRUCTION NOTES
- 1 - 24" L-TYPE CURB & GUTTER (CCAUSD #216)
 - 2 - 6" HIGH A-TYPE CURB (CCAUSD #219)
 - 3 - 5' WIDE SIDEWALK (CCAUSD #234)
 - 4 - 3.5' WIDE SIDEWALK (CCAUSD #234)
 - 5 - ROLLING GATE (BY OTHERS - SEE ARCHITECTURAL PLANS)
 - 6 - TRASH ENCLOSURE (SEE ARCHITECTS PLANS FOR DETAILS)
 - 7 - SIDEWALK RAMP (CCAUSD #235 CASE III) (A = 8' & B = 8')
 - 8 - COMMERCIAL DRIVEWAY (CCAUSD #224)
 - 9 - 3" MAX WROUGHT IRON FENCE ON TOP OF 3" MAX CMU WAL
 - 10 - 8" CROSS GUTTER (CCAUSD #228)
 - 11 - REMOVE EXISTING CURB & GUTTER
 - 12 - SIDEWALK UNDERDRAIN (CCAUSD #236)
 - 13 - AREA DRAIN (DETAIL F/GD1)
 - 14 - 6" AC OVER 20.5" TYPE II PER SOILS REPORT
 - 15 - COMMERCIAL DRIVEWAY OPTION "A" (CCAUSD #224)
 - 16 - 6" PVC PIPE MIN 0.5% SLOPE

GEOTECHNICAL
 GEOTEK, INC.
 6835 SOUTH ESCONCIDO STREET, SUITE A
 LAS VEGAS, NV 89119
 (702) 897-1424
 REPORT NO: 11809.1-LV
 DATE: 06/10/14; UPDATED 12/28/20, UPDATED 05/12/2021

EARTHWORK
 TOTAL FOR OVERALL DEVELOPMENT: 1724.16 CY CUT / 5353.49 CY FILL / 3629.33 CY NET (FILL)
 NOTE: THIS OPINION OF THE CUT AND FILL QUANTITIES IS PROVIDED AS REQUIRED BY THE GOVERNING ENTITY. THIS INFORMATION SHOULD NOT BE USED FOR BIDDING PURPOSES. ALL CONTRACTORS ARE RESPONSIBLE FOR THEIR OWN QUANTITIES. THESE TOTALS ARE RAW AND DO NOT ACCOUNT FOR SHRINKAGE AND SUBSIDENCE.

FLOOD ZONE
 THIS PROJECT IS LOCATED IN FLOOD ZONE "X". AN AREA DETERMINED TO BE OUTSIDE OF THE 0.2% ANNUAL CHANCE FLOOD PLAIN PER FIRM PANEL 32003C2160F, REVISED DATE 11/16/2011

UTILITY DISCLAIMER
 EXISTING UTILITY LOCATIONS SHOWN HEREIN ARE APPROXIMATE ONLY. IT SHALL BE THE CONTRACTORS RESPONSIBILITY TO DETERMINE THE EXACT VERTICAL AND HORIZONTAL LOCATION OF ALL EXISTING UNDERGROUND UTILITIES PRIOR TO COMMENCING CONSTRUCTION. NO REPRESENTATION IS MADE THAT ALL EXISTING UTILITIES ARE SHOWN HEREON. THE ENGINEER ASSUMES NO RESPONSIBILITY FOR UTILITIES NOT SHOWN OR UTILITIES NOT SHOWN IN THEIR EXISTING LOCATIONS.

GRADING NOTES
 ADD XX00 FEET TO ALL GRADE TAGS TO GET ACTUAL ELEVATION.
 THE ELEVATION DIFFERENCE BETWEEN THE PAD AND FINISH FLOOR IS DETERMINED FROM THE MINIMUM THICKNESS REQUIRED PER THE GEOTECHNICAL REPORT. FINISH FLOORS MAY INCREASE DEPENDING ON THE TYPE OF SOIL AND FOUNDATION PLAN USED. NOTE THAT THE STRUCTURAL PLANS & GEOTECHNICAL REPORT SHALL SUPERSEDE THE CIVIL IMPROVEMENT PLANS.
 ALL PRIVATE STREETS AND DRAINAGE EASEMENTS ARE TO BE PRIVATELY OWNED AND MAINTAINED BY THE HOMEOWNERS ASSOCIATION (H.O.A.).
 ALL WORK TO BE PERFORMED OUTSIDE OF THE PROJECT BOUNDARY AND ON PRIVATE PROPERTY SHALL NOT BE PERFORMED UNTIL WRITTEN PERMISSION AND EASEMENTS HAVE BEEN OBTAINED FROM THE OFFSITE OWNER AND GIVEN TO THE GOVERNING ENTITY.

BENCHMARK
 CITY OF NORTH LAS VEGAS BENCHMARK 5LV0120W6
 RIVET AND 2" ROUND BRASS DISK STAMPED CITY OF LAS VEGAS BM NO. 5LV0120W6, SET IN THE TOP OF CURB LOCATED APPROXIMATELY 1.5 FEET EAST OF THE SOUTHEAST EAST BCR AT THE INTERSECTION OF CORAN LN. AND FERRELL ST.
 ELEVATION: 644.29 METERS / 2113.81 FEET (NAVD83_2018)

GRADING CERTIFICATION
 I CERTIFY THIS GRADING PLAN COMPLIES WITH THE APPROVED DRAINAGE STUDY, HTE# XX-XXXXX, ON FILE WITH CITY OF NORTH LAS VEGAS FOR THIS PROJECT.

ROBERT D. CUNNINGHAM, PE DATE _____
 MARK A. ESCOBEDO, P.E., CFM DATE _____
 MANAGER, DEVELOPMENT AND FLOOD CONTROL DIVISION

FAST
 Call before you Underground
 1-702-432-5300
FREEWAY & ARTERIAL SYSTEM OF TRANSPORTATION

Avoid overhead power line contact. It's costly.
Call before you Overhead
 1-702-227-2929

Call before you Dig
 Avoid cutting underground utility lines. It's costly.
811
 OR
 1-800-642-2444

NO.	DESCRIPTION	BY	SHTS.	APPR.	DATE

FORESIGHT COMPANIES

TANAY ENGINEERING
 CIVIL ENGINEERING & LAND SURVEYING
 6030 S. JONES BLVD
 LAS VEGAS, NV 89118
 (702) 362-8844
 INFO@TANAYCORP.COM

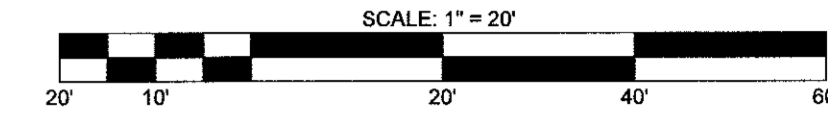
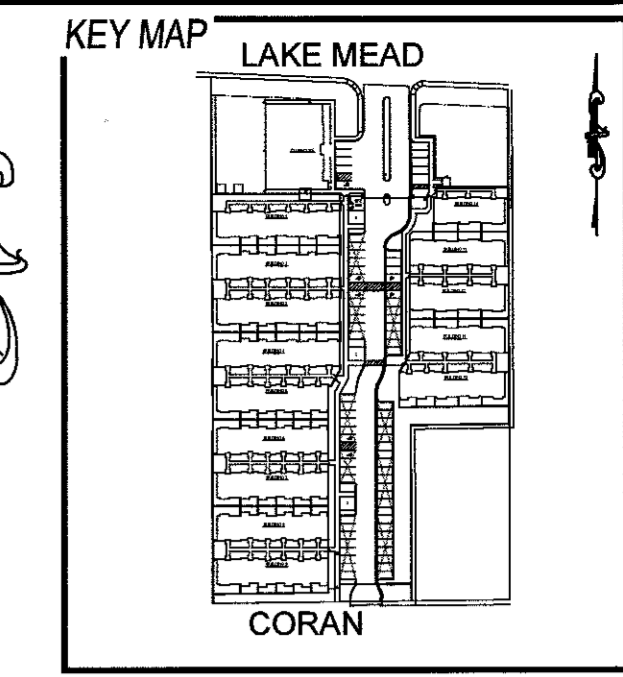
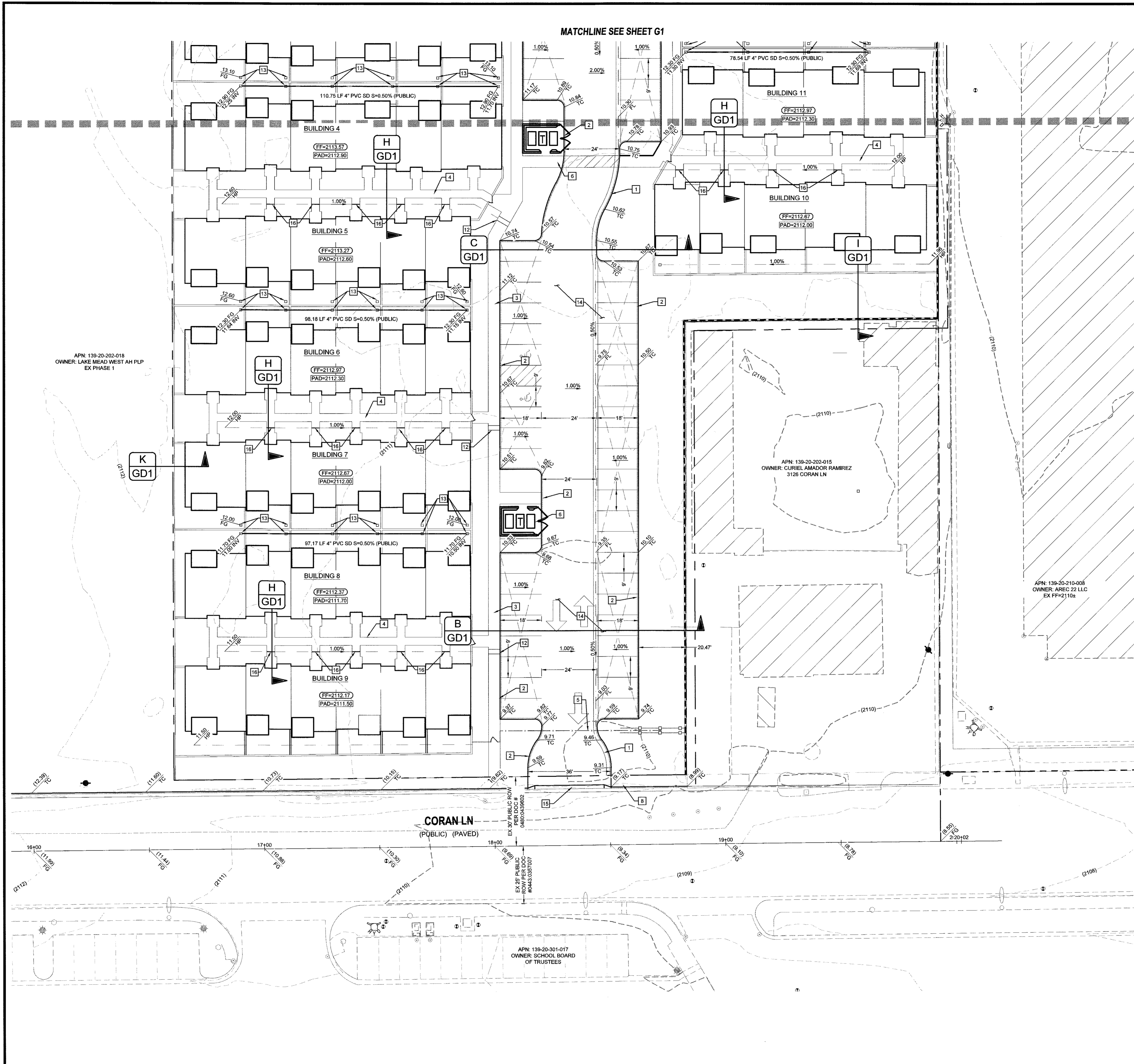
GEOTECHNICAL
 GEOTEK, INC.
 6835 SOUTH ESCONCIDO STREET, SUITE A
 LAS VEGAS, NV 89119
 (702) 897-1424
 REPORT NO: 11809.1-LV
 DATE: 06/10/14; UPDATED 12/28/20, UPDATED 05/12/2021

LAKE MEAD WEST SENIOR MULTI FAMILY GRADING PLAN 1

ROBERT CUNNINGHAM
 Exp. 12-31-22
 CIVIL
 No. 15726
 6.3.22

DATE:	8/31/2022
SCALE:	1"=30'
JOB NO.:	FRC-20-003
DESIGNED BY:	EP
CHECKED BY:	RC
SHEET NAME:	G1
SHEET NUMBER:	4 OF 06
MARK A. ESCOBEDO, P.E., CFM MANAGER, DEVELOPMENT AND FLOOD CONTROL DIVISION	DATE _____
CNLV	0000000

LAST PLOT: John Dabon
 FILE NAME: S:\ACTIVE\FORESIGHT COMPANIES\FRC-20-003 - LAKE MEAD WEST SENIOR 3 IPS3 SHEET DWG\FRC003_SHT_03.DWG



- ### CONSTRUCTION NOTES
- 1 24" L-TYPE CURB & GUTTER (CCAUSD #216)
 - 2 6" HIGH A-TYPE CURB (CCAUSD #219)
 - 3 5' WIDE SIDEWALK (CCAUSD #234)
 - 4 3.5' WIDE SIDEWALK (CCAUSD #234)
 - 5 ROLLING GATE (BY OTHERS - SEE ARCHITECTURAL PLANS)
 - 6 TRASH ENCLOSURE (SEE ARCHITECTS PLANS FOR DETAILS)
 - 7 SIDEWALK RAMP (CCAUSD #235 CASE III) (A = 8' & B = 8')
 - 8 COMMERCIAL DRIVEWAY (CCAUSD #224)
 - 9 3" MAX WROUGHT IRON FENCE ON TOP OF 3" MAX CMU WAL 8" CROSS GUTTER (CCAUSD #228)
 - 10 REMOVE EXISTING CURB & GUTTER
 - 11 SIDEWALK UNDERDRAIN (CCAUSD #236)
 - 12 AREA DRAIN (DETAIL F/GD1)
 - 13 6" AC OVER 20.5" TYPE II PER SOILS REPORT
 - 14 COMMERCIAL DRIVEWAY OPTION "A" (CCAUSD #224)
 - 15 6" PVC PIPE MIN 0.5% SLOPE

GEOTECHNICAL
 GEOTEK, INC.
 6835 SOUTH ESCONCIDO STREET, SUITE A
 LAS VEGAS, NV 89119
 (702) 957-1424

REPORT NO: 11809-1-LV
 DATE: 06/10/14; UPDATED 12/28/20, UPDATED 05/12/2021

EARTHWORK
 TOTAL FOR OVERALL DEVELOPMENT: 1724.16 CY CUT / 5353.49 CY FILL / 3629.33 CY NET (FILL)

NOTE: THIS OPINION OF THE CUT AND FILL QUANTITIES IS PROVIDED AS REQUIRED BY THE GOVERNING ENTITY. THIS INFORMATION SHOULD NOT BE USED FOR BIDDING PURPOSES. ALL CONTRACTORS ARE RESPONSIBLE FOR THEIR OWN QUANTITIES. THESE TOTALS ARE RAW AND DO NOT ACCOUNT FOR SHRINKAGE AND SUBSIDENCE.

FLOOD ZONE
 THIS PROJECT IS LOCATED IN FLOOD ZONE "X", AN AREA DETERMINED TO BE OUTSIDE OF THE 0.2% ANNUAL CHANCE FLOOD PLAIN PER FIRM PANEL 32003C2160F, REVISED DATE 11/16/2011.

UTILITY DISCLAIMER
 EXISTING UTILITY LOCATIONS SHOWN HEREIN ARE APPROXIMATE ONLY. IT SHALL BE THE CONTRACTOR'S RESPONSIBILITY TO DETERMINE THE EXACT VERTICAL AND HORIZONTAL LOCATION OF ALL EXISTING UNDERGROUND UTILITIES PRIOR TO COMMENCING CONSTRUCTION. NO REPRESENTATION IS MADE THAT ALL EXISTING UTILITIES ARE SHOWN HEREON. THE ENGINEER ASSUMES NO RESPONSIBILITY FOR UTILITIES NOT SHOWN OR UTILITIES NOT SHOWN IN THEIR EXISTING LOCATIONS.

GRADING NOTES
 ADD XXXX FEET TO ALL GRADE TAGS TO GET ACTUAL ELEVATION.

THE ELEVATION DIFFERENCE BETWEEN THE PAD AND FINISH FLOOR IS DETERMINED FROM THE MINIMUM THICKNESS REQUIRED PER THE GEOTECHNICAL REPORT. FINISH FLOORS MAY INCREASE DEPENDING ON THE TYPE OF SOIL AND FOUNDATION PLAN USED. NOTE THAT THE STRUCTURAL PLANS & GEOTECHNICAL REPORT SHALL SUPERSEDE THE CIVIL IMPROVEMENT PLANS.

ALL PRIVATE STREETS AND DRAINAGE EASEMENTS ARE TO BE PRIVATELY OWNED AND MAINTAINED BY THE HOMEOWNERS ASSOCIATION (H.O.A.).

ALL WORK TO BE PERFORMED OUTSIDE OF THE PROJECT BOUNDARY AND ON PRIVATE PROPERTY SHALL NOT BE PERFORMED UNTIL WRITTEN PERMISSION AND EASEMENTS HAVE BEEN OBTAINED FROM THE OFFSITE OWNER AND GIVEN TO THE GOVERNING ENTITY.

BENCHMARK
 CITY OF NORTH LAS VEGAS BENCHMARK 5LV0120W6
 RIVET AND 2" ROUND BRASS DISK, STAMPED CITY OF LAS VEGAS BM NO. 5LV0120W6, SET IN THE TOP OF CURB LOCATED APPROXIMATELY 1.5 FEET EAST OF THE SOUTHEAST EAST COR AT THE INTERSECTION OF CORAN LN. AND FERRELL ST.
 ELEVATION: 644.29 METERS / 2113.81 FEET (NAVD85_V2018)

GRADING CERTIFICATION
 I CERTIFY THIS GRADING PLAN COMPLIES WITH THE APPROVED DRAINAGE STUDY, H#EP XX-XXXXX, ON FILE WITH CITY OF NORTH LAS VEGAS FOR THIS PROJECT.

ROBERT D. CUNNINGHAM, PE DATE

MARK A. ESCOBEDO, P.E., CFM
 MANAGER, DEVELOPMENT AND FLOOD CONTROL DIVISION DATE

FAST
 Call before you Underground
 1-702-432-5300
 FREEWAY & ARTERIAL SYSTEMS OF TRANSPORTATION

Call before you Overhead
 1-702-227-2929

Call before you Dig
 Avoid cutting underground utility lines. It's costly.
 CALL 811 OR 1-800-642-2444

NO.	DESCRIPTION	BY	APPR.	DATE

FORESIGHT COMPANIES

TANEY ENGINEERING & LAND SURVEYING
 6030 S. JONES BLVD
 LAS VEGAS, NV 89118
 (702) 362-8844
 INFO@TANEYCORP.COM

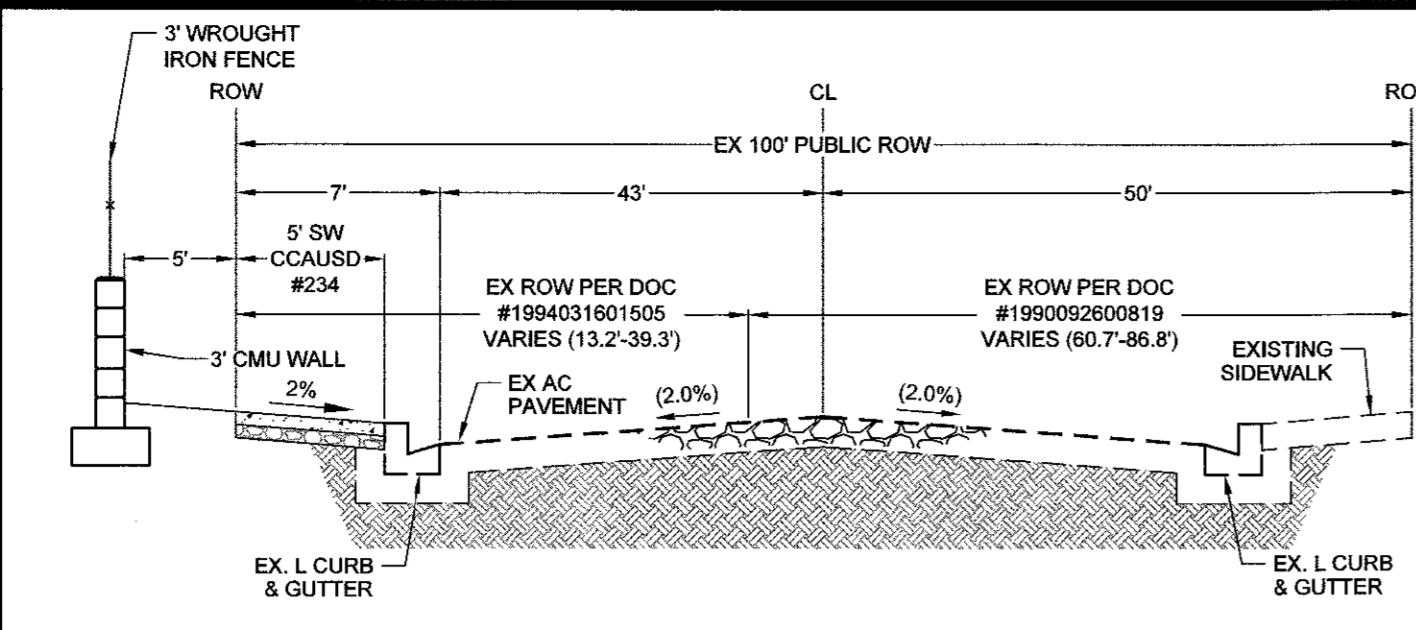
LAKE MEAD WEST SENIOR
 MULTI FAMILY
 GRADING PLAN 2

ROBERT D. CUNNINGHAM
 Exp. 12-31-27
 CIVIL
 No. 15725
 8.31.22

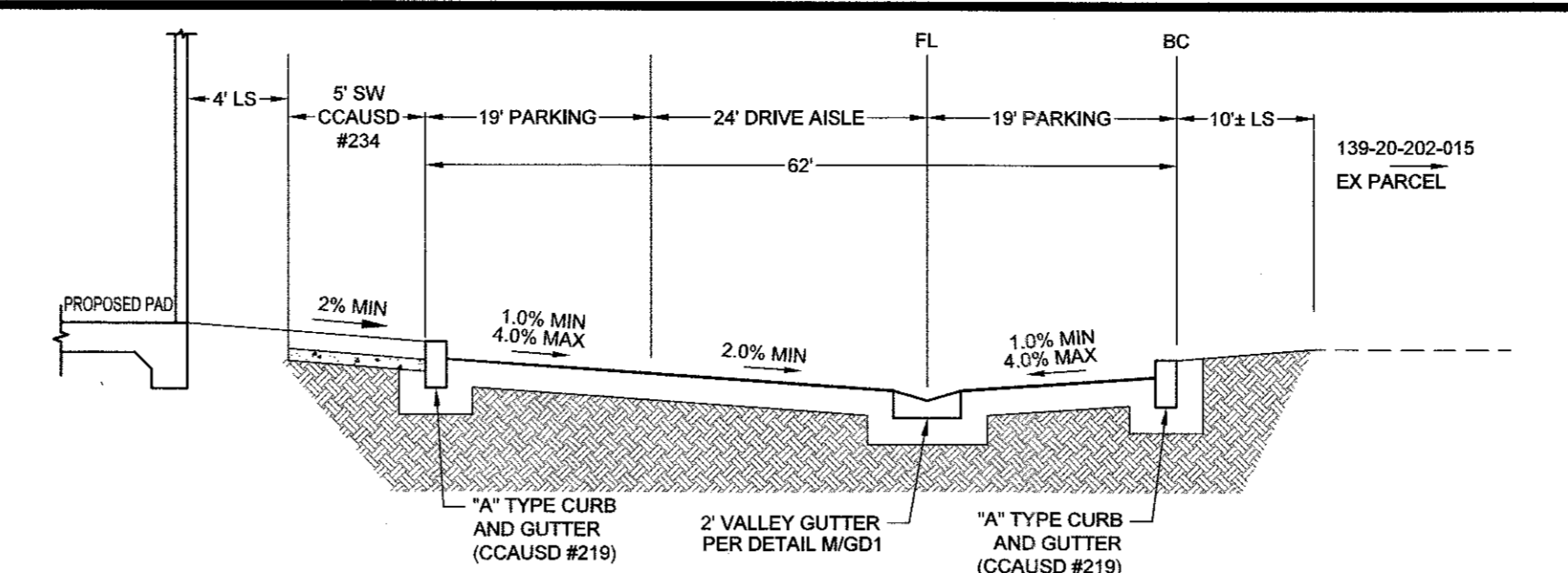
DATE: 8/31/2022
 SCALE: 1"=30'
 JOB NO: FRC-20-003
 DESIGNED BY: EP CHECKED BY: RC
 SHEET NAME: G2
 SHEET NUMBER: 5 OF 06
 CNLV 000000

STANDARD SECTION NOTES:

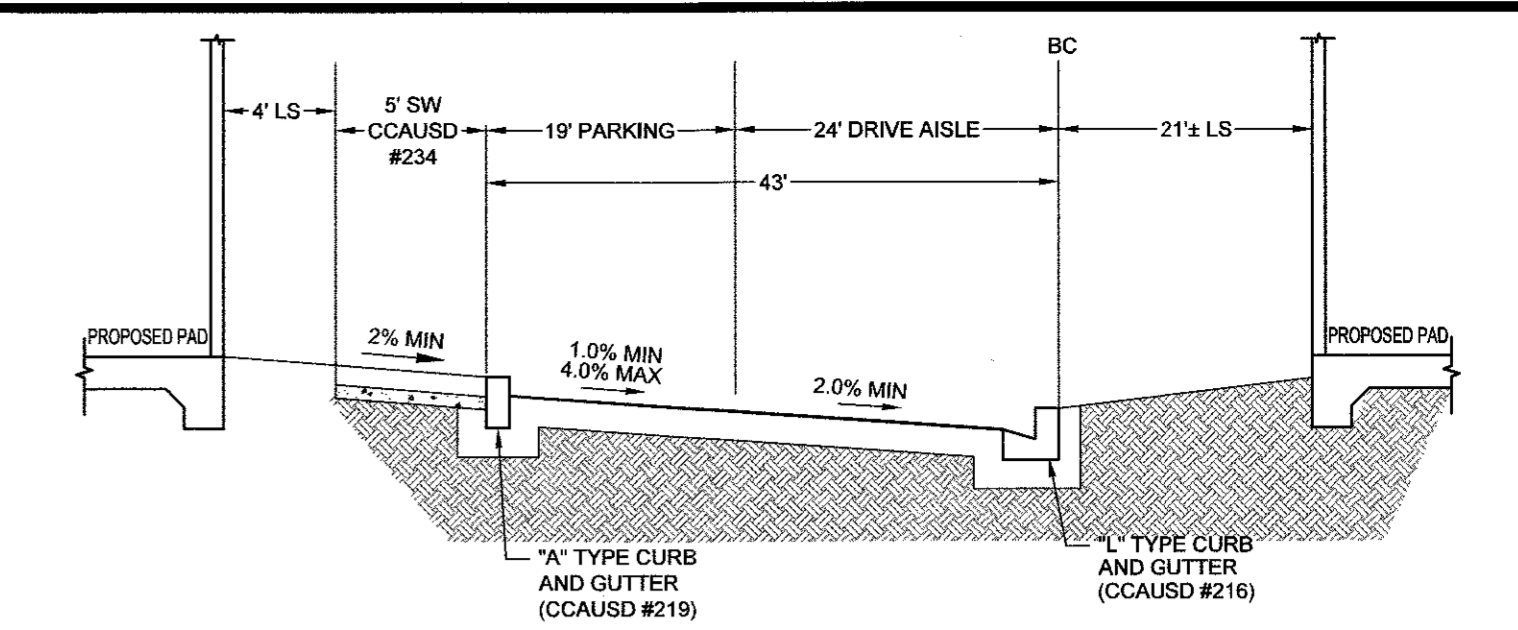
1. ALL AGG. BASES SHALL BE COMPACTED PER GEOTECH REPORT.
2. PRELIMINARY PAVEMENT SECTIONS SHALL BE VERIFIED WITH THE FINAL PAVEMENT SECTION RECOMMENDATION REPORT PRIOR TO CONSTRUCTION. ALL SLOPES GREATER THAN 3:1 WILL HAVE A 2FT AT 2% BENCH AT THE TOP OF SLOPE.
3. SLOPES GREATER THAN 8:1 UP TO 3:1 WILL HAVE A 1FT BENCH AT 2% AT THE TOP OF SLOPE.
4. ALL PERIMETER WALLS SHALL BE DECORATIVE.
5. MAINTAIN 4 INCHES OR LESS SEPARATION BETWEEN WALLS PER TITLE 30.64.0203. GAP TO BE FILLED & CAPPED WITH METAL FLASHING.
6. WALL SECTIONS SHOWN ON THIS SHEET ARE FOR REFERENCE ONLY. SEE GEOTECH REPORT AND STRUCTURAL DRAWINGS FOR DESIGN AND WATERPROOFING REQUIREMENTS.
7. FOR FOOTING DEPTH BELOW LOWEST ADJACENT GRADE, SEE GEOTECH REPORT RECOMMENDATIONS AND STRUCTURAL DRAWINGS.
8. DISTANCE FROM OUTSIDE EDGE OF FOOTING TO THE FACE OF ADJACENT DESCENDING SLOPE SHOULD MEET THE MINIMUM DISTANCES OUTLINED IN THE GEOTECH REPORT.
9. AGG. BASE TO BE COMPACTED PER THE SOILS REPORT.
10. A.C. PAVEMENT TO BE A MAXIMUM 1/2" ABOVE LIP OF ADJACENT CONCRETE AFTER COMPACTION.



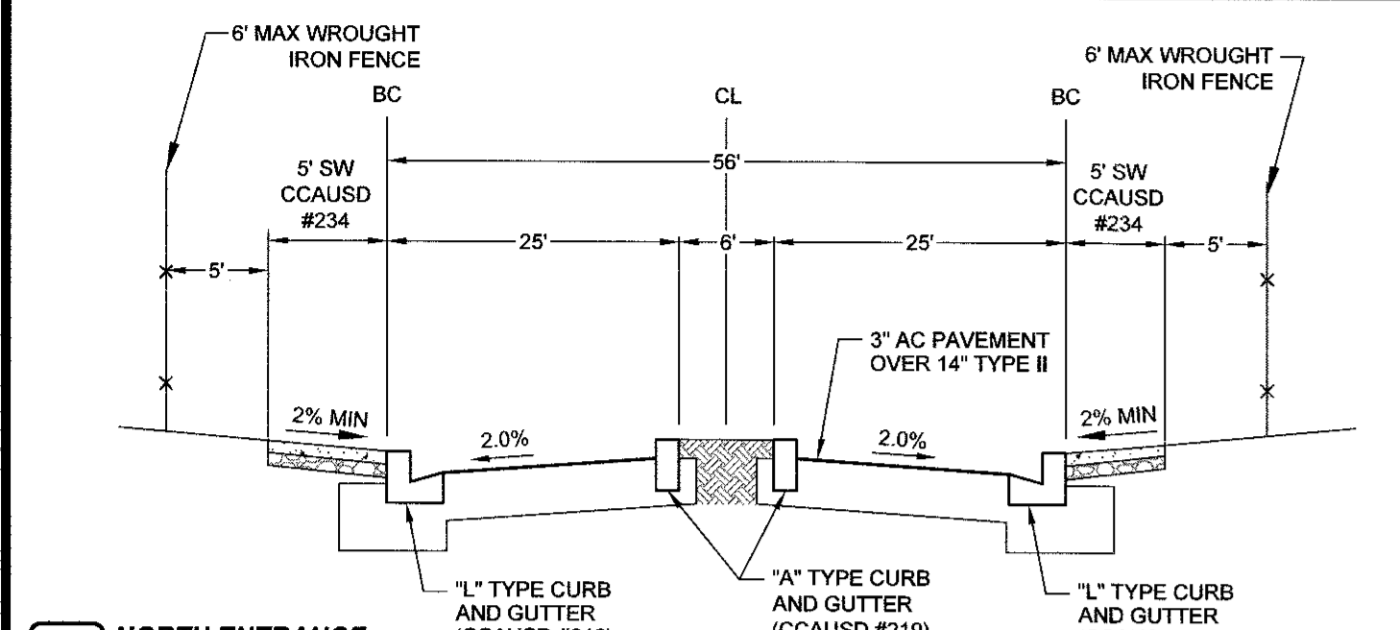
A LAKE MEAD BLVD SECTION NTS



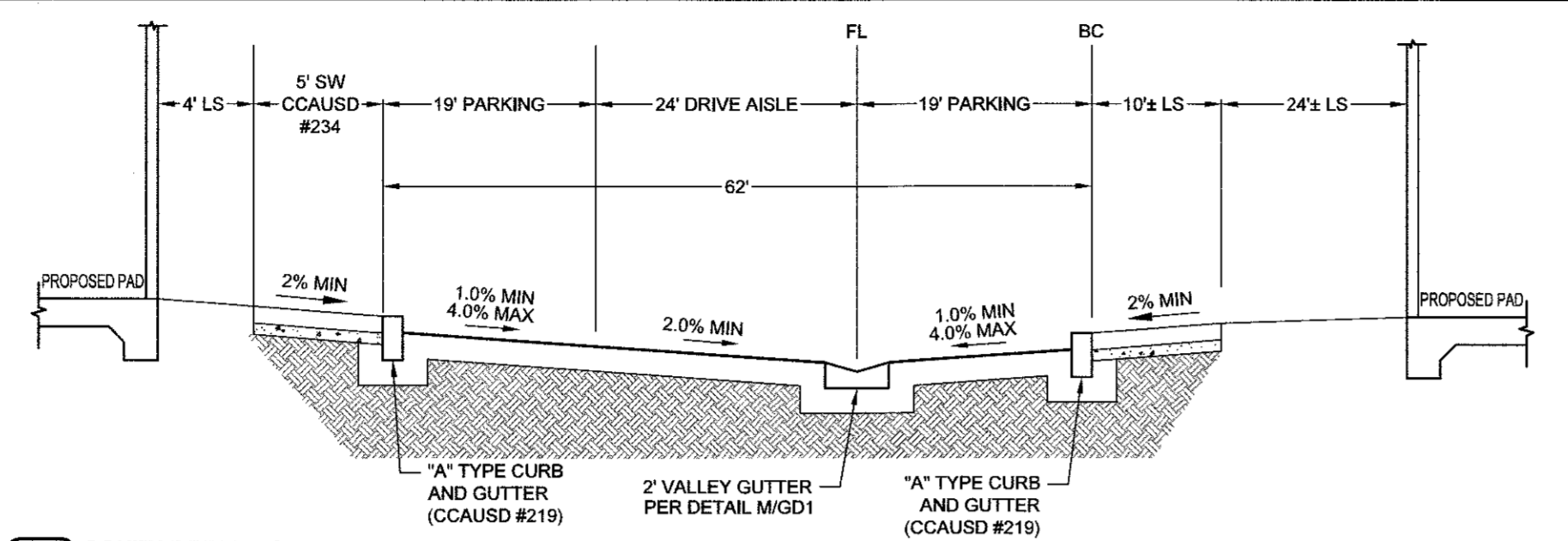
B SOUTH DRIVE AISLE SECTION NTS



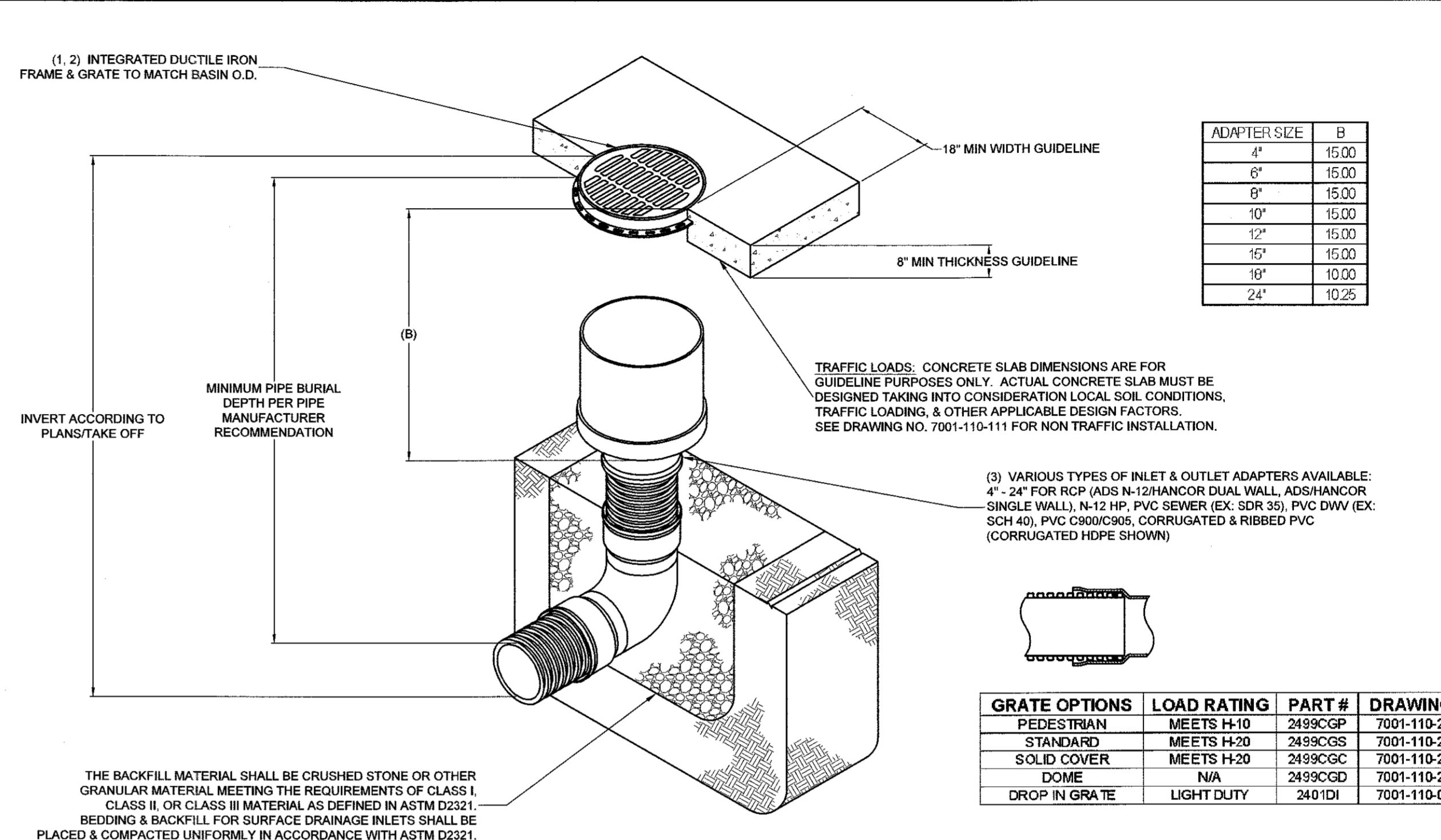
C DRIVE AISLE SECTION NTS



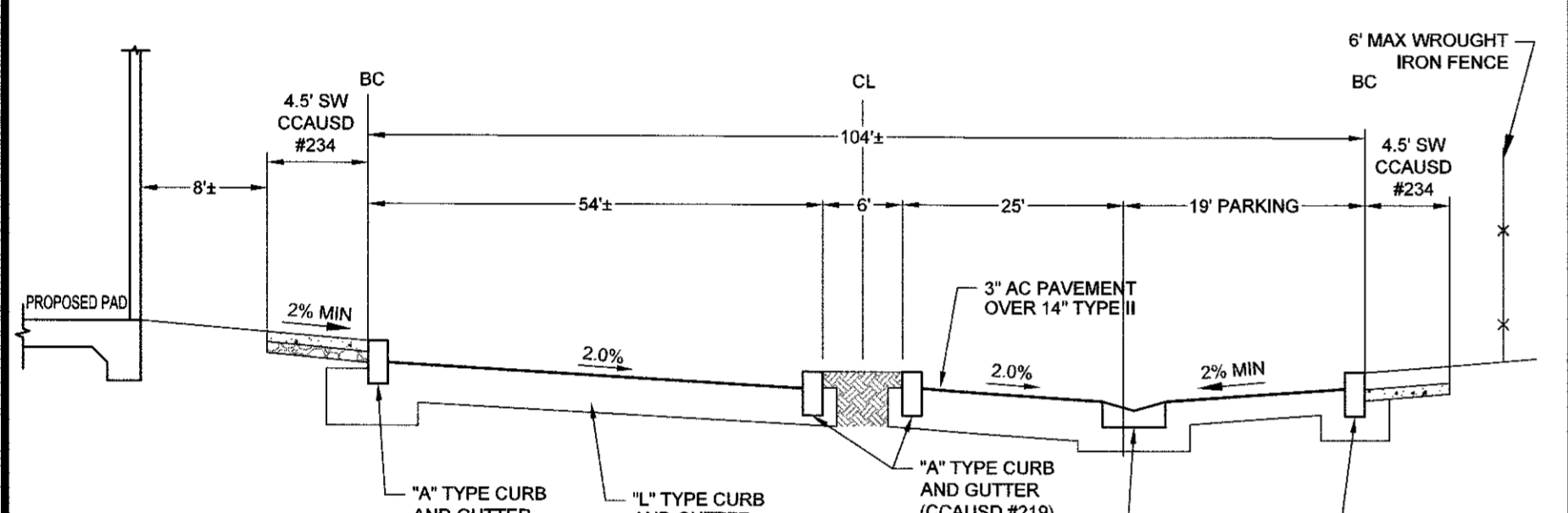
D NORTH ENTRANCE SECTION NTS



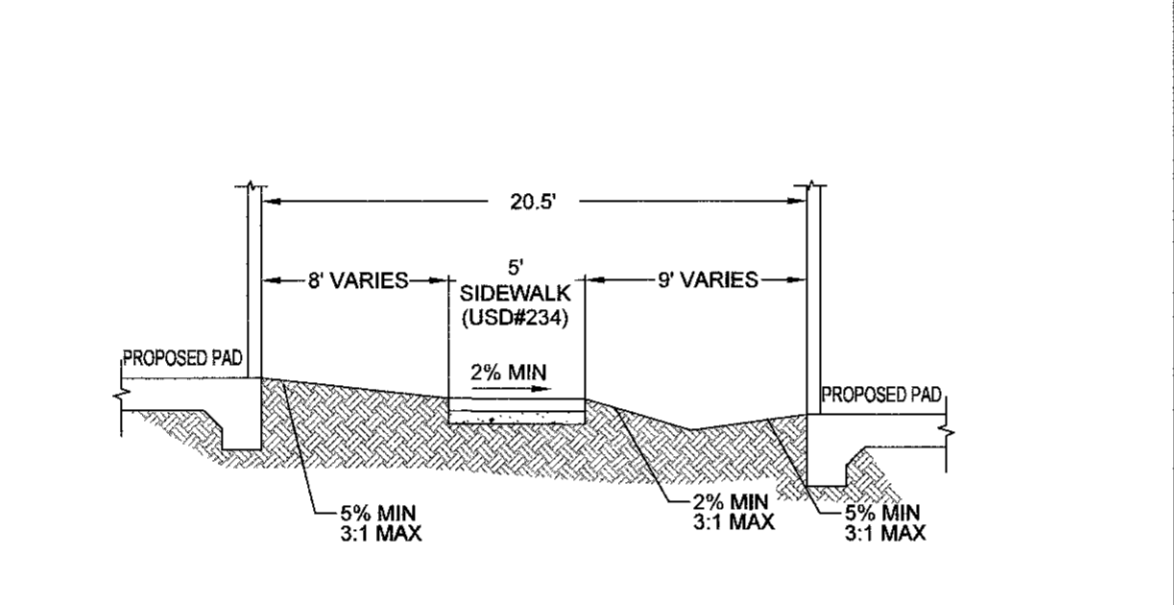
E SOUTH DRIVE AISLE SECTION NTS



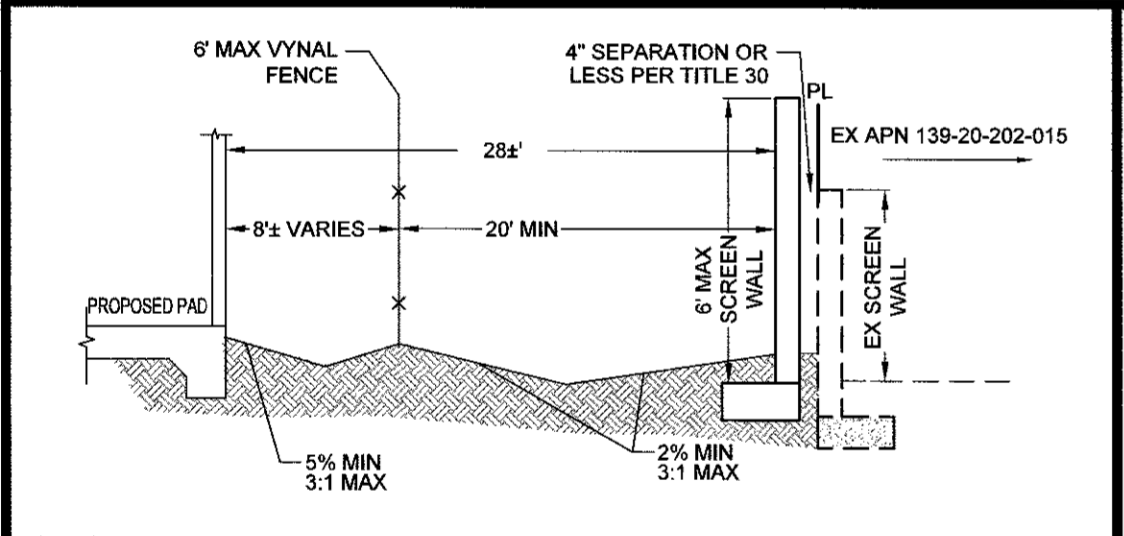
F NYLOPLAST 24\"/>



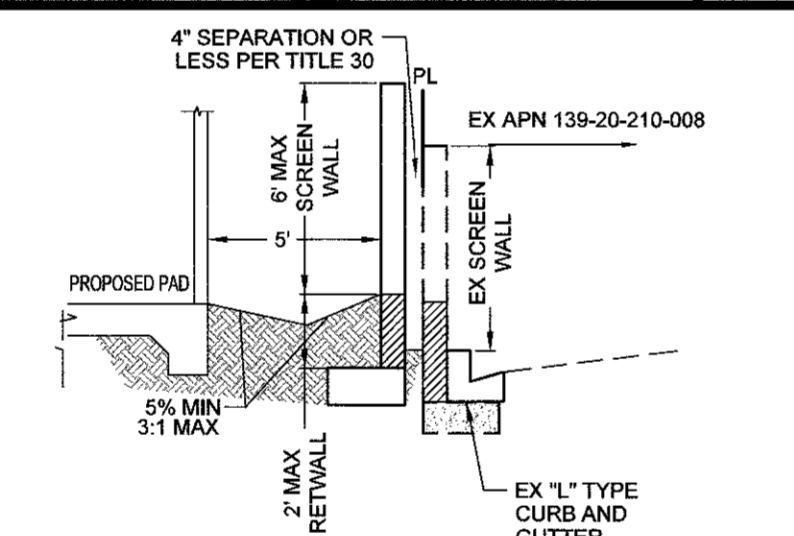
G NORTH ENTRANCE SECTION NTS



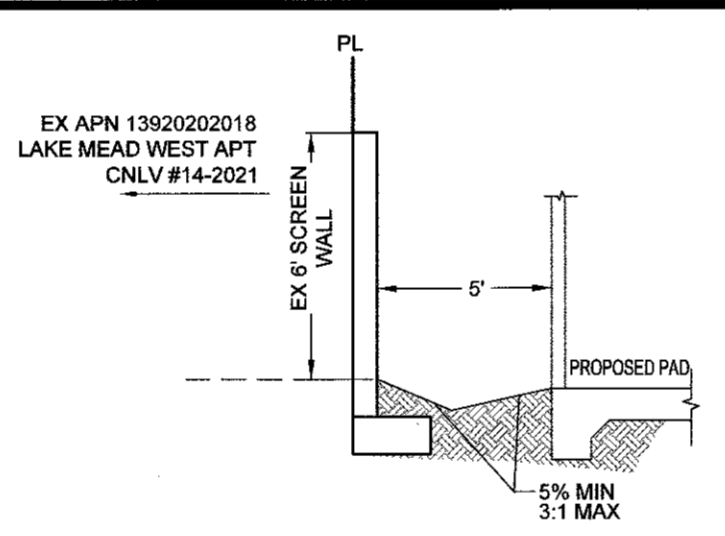
H BUILDING TO BUILDING W/ SW SECTION NTS



I BUILDING TO BUILDING W/ SW SECTION NTS



J EAST BOUNDARY SECTION NTS



K EAST BOUNDARY SECTION NTS

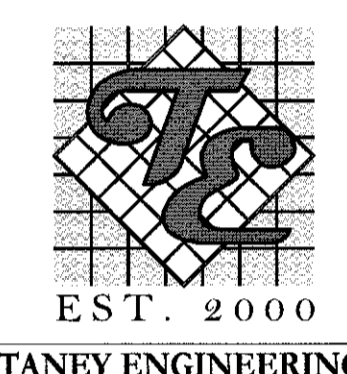
<p>THIS PRINT DISCLOSES SUBJECT MATTER IN WHICH NYLOPLAST HAS PROPRIETARY RIGHTS. THE RECEIPT OR POSSESSION OF THIS PRINT DOES NOT CONFER, TRANSFER, OR LICENSE THE USE OF THE DESIGN OR TECHNICAL INFORMATION SHOWN HEREIN. REPRODUCTION OF THIS PRINT OR ANY INFORMATION CONTAINED HEREIN, OR MANUFACTURE OF ANY ARTICLE HEREFROM, FOR THE DISCLOSURE TO OTHERS IS FORBIDDEN, EXCEPT BY SPECIFIC WRITTEN PERMISSION FROM NYLOPLAST.</p>		<p>DRAWN BY: EBC DATE: 04-03-06 REVISED BY: NMH DATE: 03-15-16</p>	<p>MATERIAL: NYLOPLAST PROJECT NO./NAME: 139-20-202-015 TITLE: 24 IN INLINE DRAIN QUICK SPEC INSTALLATION DETAIL DWG NO.: 7003-110-028</p>	<p>3130 VERONA AVE BUFORD, GA 30518 PHN (770) 932-2443 FAX (770) 932-2490 www.nyloplast-us.com</p>
<p>DATE: 8/31/2022 SCALE: N/A JOB NO: FRC-20-003 DESIGNED BY: EP CHECKED BY: RC</p>	<p>DATE: 8/31/2022 SCALE: N/A JOB NO: FRC-20-003 DESIGNED BY: EP CHECKED BY: RC</p>			

GRATE OPTIONS	LOAD RATING	PART #	DRAWING #
PEDESTRIAN	MEETS H-10	2499CGP	7001-110-216
STANDARD	MEETS H-20	2499CGS	7001-110-217
SOLID COVER	MEETS H-20	2499CGC	7001-110-218
DOME	N/A	2499CGD	7001-110-219
DROP IN GRATE	LIGHT DUTY	2401DI	7001-110-075

- 1 - GRATES/SOLID COVER SHALL BE DUCTILE IRON PER ASTM A536 GRADE 70-50-05.
- 2 - FRAMES SHALL BE DUCTILE IRON PER ASTM A536 GRADE 70-50-05.
- 3 - DRAINAGE CONNECTION STUB JOINT TIGHTNESS SHALL CONFORM TO ASTM D3212 FOR CORRUGATED HDPE (ADS N-12/HANCOR DUAL WALL), N-12 HP, & PVC SEWER.
- 4 - DIMENSIONS ARE FOR REFERENCE ONLY. ACTUAL DIMENSIONS MAY VARY.
- 5 - DIMENSIONS ARE IN INCHES.
- 6 - SEE DRAWING NO. 7001-110-275 FOR ADS N-12 & HANCOR DUAL WALL BELL INFORMATION & DRAWING NO. 7001-110-364 FOR N-12 HP BELL INFORMATION.

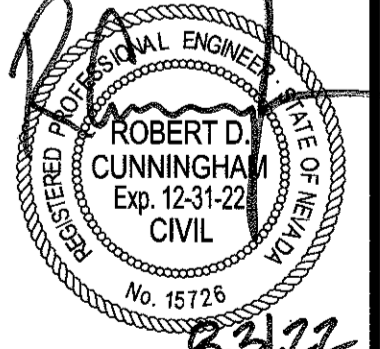
NO.	DESCRIPTION	BY	SH/TS	APPR.	DATE

FORESIGHT COMPANIES



TANEY ENGINEERING & CIVIL ENGINEERING & LAND SURVEYING
6030 S. JONES BLVD
LAS VEGAS, NV 89118
(702) 363-8844
INFO@TANEYCORP.COM

LAKE MEAD WEST SENIOR MULTI-FAMILY DETAILS



DATE: 8/31/2022	SCALE: N/A
JOB NO: FRC-20-003	DESIGNED BY: EP
CHECKED BY: RC	SHEET NAME: DET1
SHEET NUMBER: 6 OF 06	CNVL 000000

THE OFFSITE PAVEMENT SECTIONS SHOWN ON THE PLANS ARE FOR REFERENCE ONLY. THE ACTUAL SECTION MUST BE DESIGNED IN ACCORDANCE WITH STANDARD SPECIFICATION SECTION 401 USING THE AASHTO MODEL. UPDATED SECTIONS MUST BE BASED ON TRAFFIC COUNTS PROVIDED BY THE CITY AND R-VALUE TEST RESULTS PERFORMED SUBSEQUENT TO GRADING.

LAST PLOT: John Dabon
FILE NAME: S:\ACTIVE\FORESIGHT COMPANIES\FRC-20-03 - LAKE MEAD WEST SENIOR\GIS\PS3 SHEET DWG\FRC003_SHT_DET.DWG