

Winterwood Unit

IN THE COUNTY OF CLARK

no 2

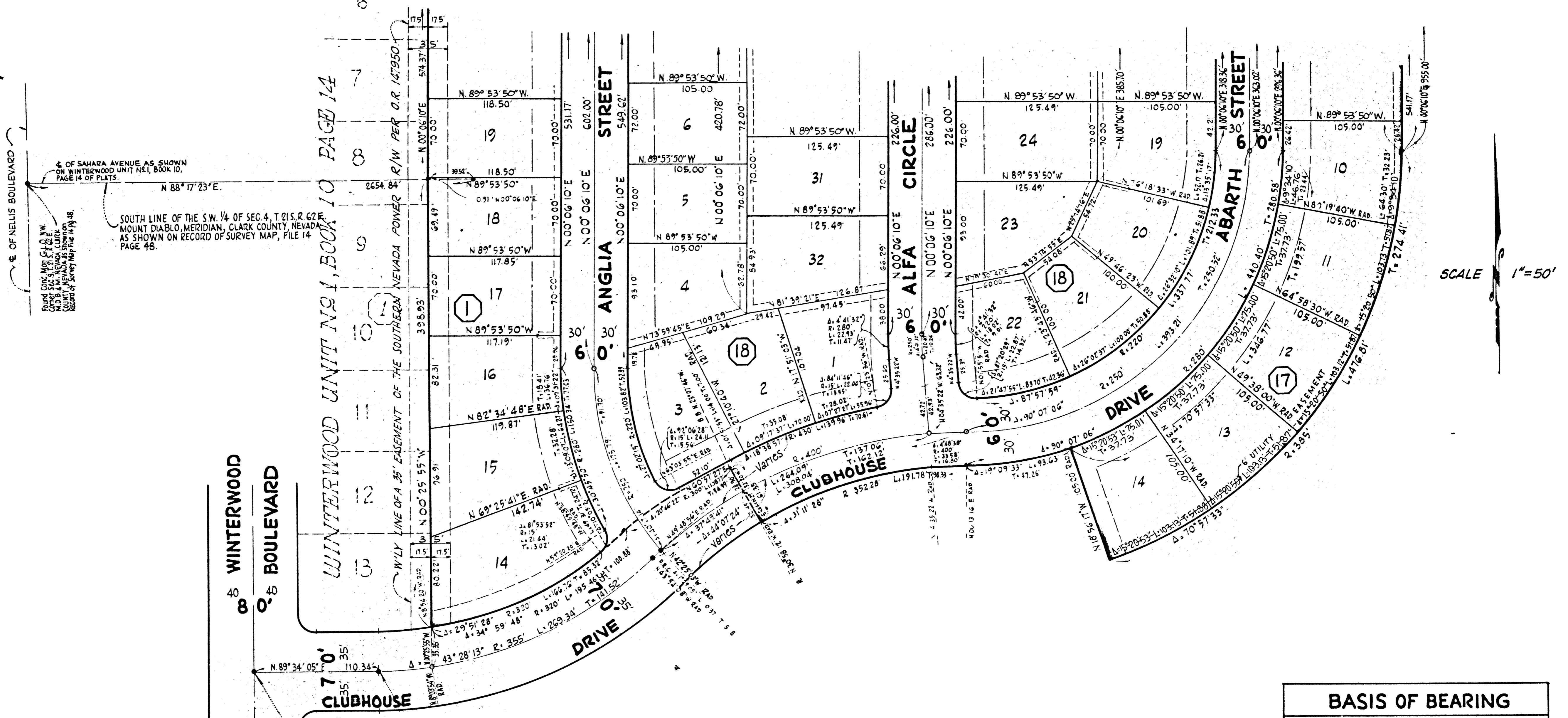
STATE OF NEVADA

PORTION OF S 1/2 OF SEC. 4 AND PORTION OF N 1/2 OF SEC 9, T 21 S, R. 62 E., M.D.M., CLARK COUNTY, NEVADA

SEE

SHEET

3



SCALE 1"=50'

BASIS OF BEARING

THE BEARING OF THE SOUTH LINE OF THE SOUTHWEST QUARTER OF SECTION 4, TOWNSHIP 21 SOUTH, RANGE 62 EAST, MOUNT DIABLO MERIDIAN, COUNTY OF CLARK AND STATE OF NEVADA, NORTH 88°17'23" EAST, AS SHOWN ON THE RECORD OF SURVEY MAP FILED IN FILE 14, PAGE 48 OF SURVEYS IN THE OFFICE OF THE RECORDER OF CLARK COUNTY, NEVADA

LEGEND

- Set 6 Cyl Concrete Monument
- Indicates Monument Found
- Utility Easement 6' each side of lot line
- - - 25' Setback Line
- 15' Setback Line

709-23