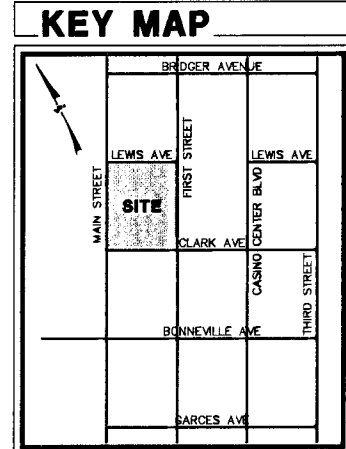
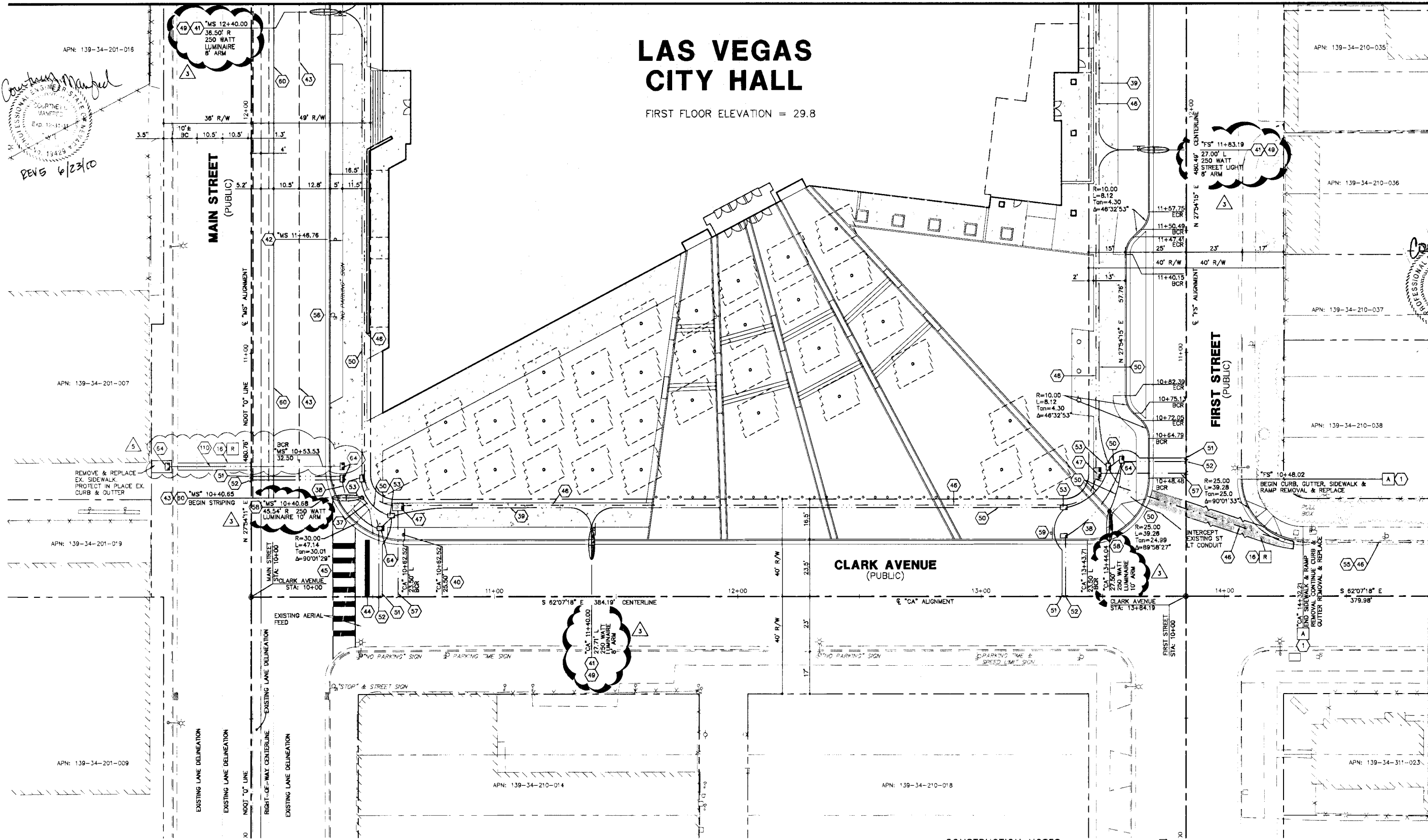


MATCH LINE - SEE SHEET C3.03

# LAS VEGAS CITY HALL

FIRST FLOOR ELEVATION = 29.8



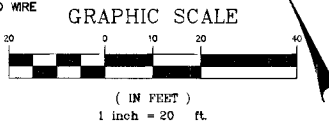
**BASIS OF BEARING**  
SOUTH 27°54'30" WEST BEING THE CENTERLINE OF CASINO CENTER BOULEVARD BETWEEN STEWART AVENUE AND COOLIDGE AVENUE AS SHOWN BY MAP THEREOF IN FILE 67, PAGE 79 OF SURVEYS IN THE CLARK COUNTY RECORDER'S OFFICE.

**BENCHMARK**  
CITY OF LAS VEGAS BENCHMARK No. 6001 34SW8 RIVET & PLATE IN TOP OF CURB ON EAST SIDE OF MAIN BETWEEN BONNEVILLE & GARCES @ LIGHT POLE.  
NAVD88 DATUM, PUBLISHED DECEMBER 2, 2002.  
ELEVATION = 517.2544 METERS  
2027.08 FEET

**LEGEND**

- STREET LIGHT
- 4" CONDUIT
- 2" CONDUIT
- SIGN
- EXISTING STREET LIGHT
- EXISTING CURB OVER CONDUIT TO BE REMOVED & REPLACED

- CONSTRUCTION NOTES**
- 1" CURB AND GUTTER PER CCAUSD NO. 216
  - AC PAVEMENT PATCH PER CCAUSD NO. 503 AF
  - INSTALL 3" CONDUIT WITH 2-#4's & 1-#8 GROUND WIRE
  - INSTALL 2-3" CONDUITS WITH 1-#8 GROUND WIRE
  - INSTALL 1-1/4" CONDUIT WITH 2-#4's & 1-#8 GROUND WIRES (DO NOT CONNECT FOR FUTURE CONNECTION.)
  - INSTALL R1-1 STOP SIGN (30") PER CCAUSD NO. 249A AND STREET NAME SIGN PER CCAUSD NO. 249 & 250
  - INSTALL 30"x30" RB-3A "NO PARKING" SIGN ON STREET LIGHT POLE
  - INSTALL CAT BUS ROUTE SIGN
  - TYPE 4 LANE LINE PER CCAUSD NO. 244A
  - 24" SOLID WHITE STOP BAR PER CCAUSD NO. 254A
  - SOLID WHITE CROSSWALK MARKINGS PER CCAUSD NO. 254A
  - INSTALL NO. 7 STREET LIGHT PULLBOX
  - INSTALL 4" F.A.S.T CONDUIT WITH 1-#8 PAIR PE36 #22 AWG CABLE AND ROPE STOP AND CAP AT CENTERLINE.
  - INSTALL 2" EMPTY CONDUIT WITH PULL WIRE FOR FUTURE USE
  - INSTALL R7-B SIGN PER CCAUSD NO. 249A
  - INSTALL CENTENNIAL STANDARD STREET LIGHT WITH 250W FIXTURE. ARM LENGTH AS NOTED ON PLAN. SEE DETAILS 8 & 9 ON SHEET C7.03
  - INSTALL 1-1/4" CONDUIT WITH 2-#4's & 1-#8 GROUND WIRES
  - INSTALL (1) 1-1/4" CONDUITS FROM PULLBOX AND STUB AND CAP AT CENTERLINE WITH 1-#8 GROUND WIRE
  - INSTALL 2-3" CONDUITS FROM PULLBOX AND STUB AND CAP AT CENTERLINE WITH 1-#8 GROUND WIRE
  - INSTALL NO. 3-1/2 STREET LIGHT PULLBOX
  - INSTALL CONDUIT AS SHOWN UNDER EXISTING CURB AND GUTTER
  - EXISTING "NO PARKING" SIGN PROTECT-IN-PLACE
  - INSTALL 4" F.A.S.T CONDUIT WITH 1-#8 PAIR PE36 #22 AWG CABLE AND ROPE STOP AND CAP AT CENTERLINE.
  - PER CCAUSD # 404.406 COMPLY WITH DOWNTOWN CENTENNIAL STANDARDS
  - INSTALL 30"x30" RB-3A "NO PARKING" SIGN PER CCAUSD NO. 249A
  - INSTALL TYPE II CENTERLINE PER CCAUSD #244
  - INSTALL NO. 7 STREET LIGHT PULLBOX
  - INSTALL 2" EMPTY CONDUIT WITH PULL WIRE FOR FUTURE USE
  - REMOVE EXISTING CURB AND GUTTER
  - SAWCUT AND REMOVE EXISTING A.C.



**SITE DEMOLITION NOTES**

- A REMOVE EXISTING CURB AND GUTTER
- R SAWCUT AND REMOVE EXISTING A.C.

**Call before you dig**  
Call before you dig  
1-702-455-7511  
1-702-455-7510  
1-800-227-2800  
1-702-455-7544

**POGGEMEYER DESIGN GROUP**  
6960 Smoke Ranch, Suite 110  
Las Vegas, Nevada 89128  
702.255.8100  
702.255.6375  
www.poggemeyer.com

**COURTNEY L. MANFRED**  
PROFESSIONAL ENGINEER - STATE OF NEVADA  
Exp. 12-31-11  
CIVIL  
No. 19429

**COURTNEY L. MANFRED**  
PROFESSIONAL ENGINEER - STATE OF NEVADA  
Exp. 12-31-11  
CIVIL  
No. 19429

**SITE & TRAFFIC PLAN - FIRST FLOOR - SOUTH**

**NEW CITY HALL**  
**CITY OF LAS VEGAS**  
**CLARK COUNTY, NEVADA**

JOB NUMBER: 08077C  
DESIGNED BY: SCD/CLM  
DRAWN BY: BAM  
CHECKED BY: SCD  
DATE: 8/31/09  
SHEET NUMBER: 11 of 40