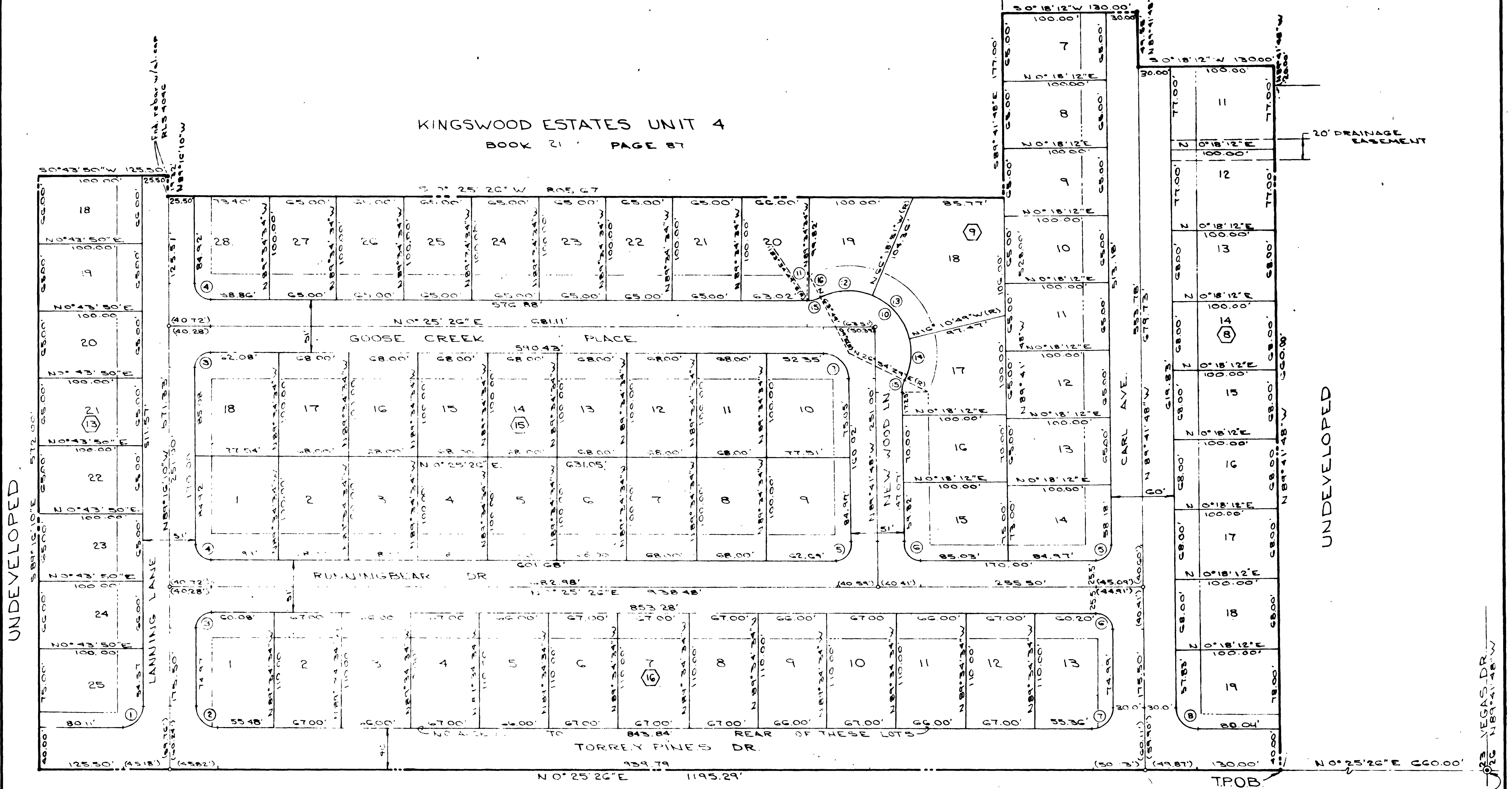


# KINGSWOOD ESTATES UNIT 5



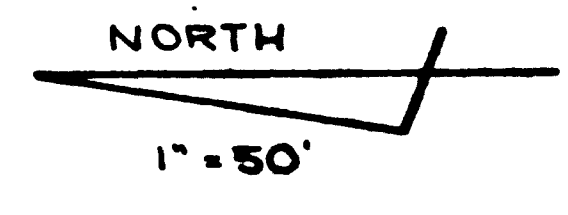
UNDEVELOPED

UNDEVELOPED

No.	Δ	R	L	T
1	89°41'32"	21.00'	31.31'	19.89'
2	90°18'24"	20.00'	31.52'	20.1'
3	89°41'32"	15.00'	23.48'	14.92'
4	90°18'24"	15.00'	23.64'	15.08'
5	90°07'14"	15.00'	23.59'	15.03'
6	89°52'46"	15.00'	23.53'	14.97'
7	90°07'14"	20.00'	31.46'	20.04'
8	89°52'46"	20.00'	31.37'	19.96'
9	89°52'46"	25.00'	39.22'	24.95'
10	43°05'20"	60.00'	149.84'	179.78'
11	6°50'37"	25.00'	2.99'	1.50'
12	49°52'00"	60.00'	52.22'	27.89'
13	50°08'02"	60.00'	52.50'	28.06'
14	43°05'18"	60.00'	45.2'	23.69'
15	26°36'17"	25.00'	11.61'	5.91'
16	19°45'40"	25.00'	8.52'	4.35'

### LEGEND

- ① Lot number
- ② Block number
- ③ Curve number
- Found monument as indicated
- Set rebar w/ cap RLS 404C
- Set brass cap in conc. mon., RLS 404C
- Building set back line
- 25' Front, 15' Side



8744

